

ARDEN THEATRE COMPANY PRESENTS

DEAR EVAN HANSEN



Arden
THEATRE CO

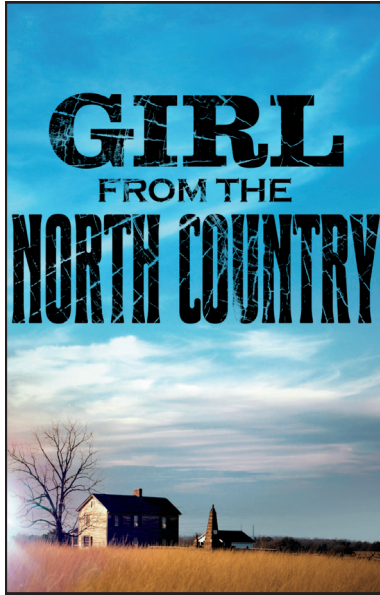
MAY 21 - JULY 5
On the F. Otto Haas Stage

Honorary Producers:
June and Steve Wolfson

2026/27 SEASON

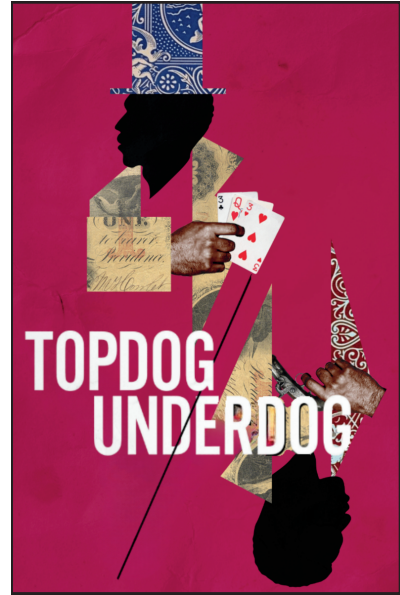
To subscribe:
Go to ardentheatre.org,
call 215.922.1122,
or visit our box office

Subscribe
and SAVE
up to 40%!



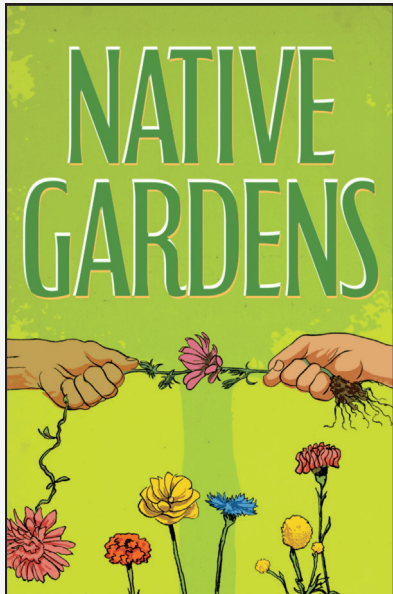
Book by
Conor McPherson
Music and Lyrics by
Bob Dylan

SEPT. 24-OCT. 25, 2026

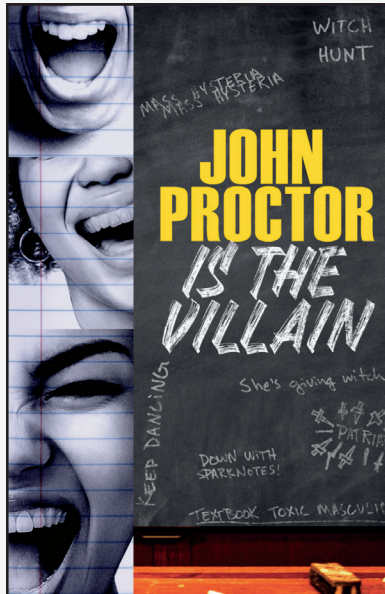


By **Suzan-Lori Parks**
Co-Produced with
People's Light

OCT. 29-DEC. 13, 2026



By **Karen Zacarias**
JAN. 21-MARCH 7, 2027



By **Kimberly Belflower**
FEB. 25-MARCH 28, 2027



PLUS, one
more show to
be announced!

WELCOME

From the Producing Artistic Director



Welcome to our final production of the season! *Dear Evan Hansen* is one of the most groundbreaking musicals of the past decade, and it has Philadelphia roots. Co-writer Benj Pasek grew up in Ardmore and the idea for the story came from an experience he had while a student at Friends' Central. I have wanted to direct this musical since I first heard it a decade ago and am thrilled by the chance to bring it to life on our stage.

We have announced our complete 26/27 season — Arden's 39th (if you are seeing the show before June 1st, check your email next Monday). We have an amazing season filled with laughter, great drama, exciting new shows, and music that will take your breath away. This season brings together the artistry of extraordinary artists who've been recognized with Barrymore Awards, Pew Fellowships, Tonys, the Pulitzer Prize, and - shout out to Bob Dylan -the Nobel Prize in Literature. It is a brilliant group of storytellers, and we can't wait to share their astonishing work with you. Stories that will allow you to escape into another world, provoke conversation that you will still be talking about the next day, as well as remind you of the thrill of great music, laughter, and live theatre.

If you've already subscribed, thank you! And if you're considered subscribing, please give it a shot. Five great shows with extraordinary Philadelphia artists. We want to make Philly a better place — to bring people together. We want to be your theatre.

Thank you for joining us for *Dear Evan Hansen*. We hope to see you back here next season. We'll be ready for you.

A handwritten signature in black ink that reads "Jeff Arden".

P.S. We've also announced a new version of Frank Baums's *The Wonderful Wizard of Oz* for Arden Children's theatre next season. A first for Arden Children's Theatre and certain to be wildly popular over the holidays. Get tickets now and come to Oz with your family and friends!

A Message from our Honorary Producers



It is our pleasure to welcome you to *Dear Evan Hansen*, the Arden's final production of the 2025/26 season. We are always happy to support the Arden, but we're especially proud to support this show—a musical that speaks powerfully to the world we're living in today. This show is more than a compelling story; it's a reflection of the challenges we all face as we navigate identity, connection, and our own well-being in an increasingly complex digital age. At a time when feelings of isolation and anxiety are widely experienced yet often difficult to discuss, this production opens the door to empathy, understanding, and honest conversation.

As we've witnessed time and again through our Arden experiences, theater has a unique ability to bring people together. *Dear Evan Hansen* reminds us of the importance of reaching out, listening, and recognizing that although we may sometimes feel forgotten, no one is truly alone. We believe supporting work like this helps strengthen our community by fostering compassion and awareness where it's needed most. We are honored to play a role in bringing this meaningful production to life and grateful to the artists and audiences who make experiences like this possible.

Enjoy the show!

June and Steve Wolfson

A Letter

from the National Alliance on Mental Illness - Philadelphia

At the **National Alliance on Mental Illness - Philadelphia (NAMI)**, we truly believe that the most effective support comes from those with lived experience and that have "walked the walk". From the CEO, to the staff, to the volunteers, our team is full of committed, missioned focused people, who seek to meet people where they are, delivered person centered supports. All of whom center around our mission of improving the quality of life for people with mental illness and their families through support, education, and advocacy.

From our Warmline, to our Support Groups, to our Youth Programs, to our College Based programs, we offer a diverse range of programs that truly seeks to be inclusive and effective concurrently, while also making sure we continuously take in the input from our members to continue to deliver on our *promise of top notch mental health services*.

Along with our volunteers, our lifeblood is collaborative partnerships like this one with the Arden. With similar missions of serving the community as a whole, we are delighted to support the arts as a method of therapeutic expression and a necessary part of our culture. We look forward to continuing to find spaces to support the artist community and the phenomenal work that the Arden does.

Kyle Carter
Chief Executive Officer

In Crisis? Call Philadelphia's Suicide Prevention and Crisis Intervention Service Line at 988

Text "NAMI" to 741741 for 24/7, confidential, free crisis counseling.

If you are NOT in Crisis but are feeling down, and would like to chat to a NAMI Philly Peer or Family Member, Call our Warmline at 844-PHL-HOPE

Call the NAMI HelpLine, M-F 10 am – 10 pm ET

1-800-950-NAMI (6264)



inspiring
A LIFE OF BEAUTY



Wood-Mode designers bring your vision to life through creativity and years of product and technical training. For more than 75 years, Wood-Mode has been developing products and training that inspire our designers, so they can inspire you.

Wood-Mode[®]
FINE CUSTOM CABINETRY

Visit Wood-Mode.com to get inspired, explore and learn more.

Wall & Walsh, Inc.
(610) 789-8530
wood-mode.com

8320 West Chester Pike
Upper Darby, PA 19082

A Note

From the Director

Directing is all about collaboration—bringing together a passionate group of actors and designers and asking them to bring themselves fully to the work — their voices and training, of course, but also their ideas and instincts as well as their fears and dreams. I love when artists feel willing to take risks so that what we create together is richer, more powerful, and bears as many fingerprints as possible.

One of my favorite collaborators is Jorge Cousineau, who co-conceived and designed the set and video for this production. Jorge first collaborated with the Arden in 1999. He moved to Philly from Germany and began designing sound for us back in a time when we used cassette tapes to play cues, then he started designing sets, and, ultimately video. After many years of working with one another, Jorge will frequently design multiple elements within a single production.

Among his many brilliant artistic contributions is the way in which he transformed how the Arden uses video and technology to tell the stories you see on stage. The work he has created with us is astonishing: *Sunday in the Park with George*, an exploration of the artistic process and the most brilliant Chromolume I can imagine; the sweep of *The Lehman Trilogy*, with stunning details capturing the rise and collapse of financial markets and family dynasties; the miniature handmade houses and landscapes of *The Secret Garden*, brilliantly filmed and projected live that captured a child's eye view of the world, a stunning fusion of filmmaking and theatre magic. Plus, *Parade*, *Assassins*, *RENT*, and so many others! He is constantly pushing the boundaries to explore how technology can not only support but amplify the live performance experience. Jorge now works at theatres and opera houses around the world, but I am grateful that he chooses to come back and continue to make the Arden his artistic home.

Connection, collaboration, and community—that's what we seek and what we have to offer. It's what allows a production to include the fingerprints of everyone involved, shaped by artists willing to bring their full selves into the room. I feel lucky to work with such an extraordinary and always growing community (including five artists making their Arden debut), and to collaborate once again with Jorge Cousineau on our 39th production together.

This production is dedicated to my son, Flynn, who introduced me to *Dear Evan Hansen* when he was first starting high school, and who continues to love this show so very much.

A handwritten signature in black ink, appearing to read "Jerry". The signature is stylized with a large, sweeping loop at the beginning.

ARDEN THEATRE COMPANY PRESENTS

DEAR EVAN HANSEN

Book by
STEVEN LEVENSON

Music and Lyrics
BENJ PASEK & JUSTIN PAUL

Production co-conceived by
JORGE COUSINEAU AND TERRENCE J. NOLEN

Scenic and Projections Designer
JORGE COUSINEAU

Costume Designer
LEVONNE LINDSAY+

Lighting Designer
THOM WEAVER+

Sound Designer
ELIZABETH ATKINSON

Music Director
RYAN TOUHEY~

Choreographer
BILLY BUSTAMANTE^

Assistant Director
CASANDRA KAY

Assistant Stage Manager
MATTHEW RYAN MELCHIOR*

Stage Manager
ALEXIS WELLS*

Directed by
TERRENCE J. NOLEN^

Honorary Producers:
June and Steve Wolfson

Orchestrations & Additional Arrangements by Alex Lacamoire. Vocal Arrangements and Additional Arrangements by Justin Paul

Originally Produced on Broadway By Stacey Mindich Originally presented by Arena Stage - July 9, 2015 to August 23, 2025
New York premiere at Second Stage - March 26, 2016 to May 29, 2016

DEAR EVAN HANSEN
Is presented through special arrangement with Music Theatre International (MTI). All authorized performance materials are also supplied by MTI.
www.mtishows.com

THE VIDEOTAPING OR MAKING OF ELECTRONIC OR OTHER AUDIO AND/OR VISUAL RECORDINGS OF THIS PRODUCT AND DISTRIBUTING RECORDINGS OR STREAMS IN ANY MEDIUM, INCLUDING THE INTERNET, IS STRICTLY PROHIBITED, A VIOLATION OF THE AUTHOR(S)'S RIGHTS AND ACTIONABLE UNDER UNITED STATES COPYRIGHT LAW. FOR MORE INFORMATION



Arden Theatre Company receives state arts funding support through a grant from the Pennsylvania Council on the Arts, a state agency funded by the Commonwealth of Pennsylvania.



+ Member of United Scenic Artists
Local USA 829

* Member of Actors' Equity Association,
the Union of Professional Actors and
Stage Managers in the U.S.



^ The director is a member of the Society
of Stage Directors and Choreographers,
Inc., an independent national labor union.



~ The musicians employed in this production are
proud members of the Philadelphia Musicians' Union,
Local 77 of the American Federation of Musicians of
the United States and Canada.



Musical Numbers



Act One



Anybody Have a Map?.....Heidi, Cynthia
 Waving Through A Window.....Evan, Company
 For Forever.....Evan
 Sincerely, Me.....Connor, Evan, Jared
 Requiem.....Zoe, Larry, Cynthia
 If I Could Tell Her.....Evan, Zoe
 Disappear.....Connor, Evan, Zoe, Alana, Jared, Cynthia, Larry, Zoe
 You Will Be Found.....Evan, Company

Act Two

Sincerely Me (Reprise).....Connor, Jared
 To Break in a Glove.....Larry, Evan
 Only Us.....Zoe, Evan
 Good for You.....Heidi, Alana, Jared, Evan
 You Will Be Found (Reprise).....Company
 Words Fail.....Evan
 So Big/So Small.....Heidi
 Finale.....Company

Orchestra

Guitar 2.....Nero Catalano
 Violin.....Rachel Massey
 Bass.....Dan McCain
 Viola.....Lorenzo Raval
 Drums.....Emily Roane
 Guitar 1.....Tim Schilling
 Conductor/Keyboard.....Ryan Touhey
 Cello.....Justin Yoder

The musicians employed in this production are proud members of the Philadelphia Musicians' Union, Local 77 of the American Federation of Musicians of the United States and Canada.



Cast of Characters

Alana Beck.....	Asia DeShields*
Jared Kleinman.....	Blake Ehrlichman*
Cynthia Murphy.....	Mary Fishburne*
Heidi Hansen.....	Krissy Fraelich*
Larry Murphy.....	Michael Halling*
Evan Hansen.....	Evan A. Kaushesh*
Zoe Murphy.....	Hailey Lara*
Connor Murphy.....	Julian Perez*

VIRTUAL COMMUNITY

Charlie Barney, Jayson Brown*, Elena Camp*, BRYANT* (Fleming), Erin Frances, Autumn Jewel Hogan, Zander Smith, Candace Thomas*

UNDERSTUDIES

Erin Frances (Zoe Murphy), Michael Eddy Harvey (Larry Murphy), Autumn Jewel Hogan (Alana Beck), Yeshua Irizarry (Jared Kleinman), Liz Mattera (Cynthia Murphy), Megan Ruggles (Heidi Hansen), Zander Smith (Evan Hansen), Derrick Williams (Connor Murphy)



Arden Theatre Company is a professional company employing members of Actors' Equity Association.
*Member of Actors' Equity Association, the Union of Professional Actors and Stage Managers in the United States.

Please check houseboards for any program changes.

Taking pictures and/or making visual or sound recordings is expressly forbidden.

Actors' Equity Association (AEA), founded in 1913, represents more than 45,000 actors and stage managers in the United States. Equity seeks to advance, promote and foster the art of live theatre as an essential component of our society. Equity negotiates wages and working conditions, providing a wide range of benefits, including health and pension plans. AEA is a member of the AFL-CIO, and is affiliated with FIA, an international organization of performing arts unions. www.actorsequity.org



ASIA DESHIELDS (*Alana Beck*) Arden: u/s in *Falsettos*, *RENT*, Regional: *Heathers: The Musical* (Milton Theatre). Education: Muhlenberg College, BA Theatre Arts. Thanks to my family and friends for their endless love and encouragement. Go Birds! Instagram: @asiadiordior.



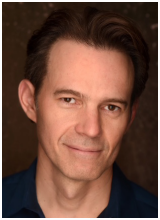
BLAKE EHRLICHMAN (*Jared Kleinman*) Arden debut. National Tour: *Dear Evan Hansen* (Evan/Jared/Connor u/s). Education: Marymount Manhattan College BFA. Love and thanks to Mom, Dad, Brandon, family & friends - for always believing. Instagram: @blakejehrllichman



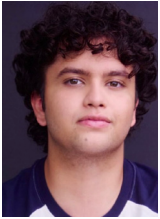
MARY FISHBURNE (*Cynthia Murphy*) Arden: Queen of Summer in *Snow Queen*, Ex- Girlfriend in *Once*. Regional: W in *Lungs* (Woofe Street Playhouse); Eliza Doolittle in *My Fair Lady* (Village Repertory Company); Nellie Forbush in *South Pacific* (Dock Street Theatre); Audrey in *Little Shop of Horrors* (What IF Productions); Rosamond in *The Robber Bridegroom* (Threshold Repertory Theatre); Emma in *Tell Me on a Sunday* (Midtown Productions LLC); Jenny in *The Christians* (PURE Theatre). Education: B.A., Vanderbilt University M.A., Temple University. Mary has worked in educational theatre for 20 years and is the writer of the musical *Boundless*, being performed at high schools and colleges throughout the country. Thank you to my family and friends, who are always helping me "find the map" in parenthood and life's other unknowns. For Nancy. Instagram: @boundlessthemusical @maryfishburne



KRISSY FRAELICH (*Heidi*) is thrilled to be back “home” at the Arden. She was last seen here as Diana in *Next to Normal*. Other Arden: Dot/Marie in *Sunday in the Park with George*, Nurse Betty Gow in *Baby Case*. Broadway: *The Civil War*. National Tour: Narrator in *Joseph and the Amazing Technicolor Dreamcoat*. Regional: Emily Hobbs in *Elf - The Musical*, Eva Peron in *Evita* (Walnut Street Theatre); Witch in *Into the Woods* (Theatre Horizon); Mama Rose in *Gypsy* and Donna in *Mama Mia* (The Media Theatre). Thank you to Terry. Love always to my greatest gifts, Nick, Zoe, Becca and Tristan.



MICHAEL HALLING (*Larry Murphy*) is thrilled to make his Arden debut! Broadway: *My Fair Lady* (Henry Higgins alternate), *The Boy from Oz* (Peter Allen standby), *The Pajama Game* (Sid Sorokin standby), *In My Life*, *The Scarlet Pimpernel*, *A Tale of Two Cities*. Off-Broadway: *Michael John La Chiusa's Giant* (The Public Theater). Favorite regional: *The Curious Incident of the Dog in the Nighttime* (Arts Center of Coastal Caroline, Ed Boone, BWW nomination); *The Goat, or Who is Sylvia?* (Arc Stages, Ross) and *The Bridges of Madison County* (The Arkansas Repertory Theatre, Robert Kincaid), as well as world premiere plays and musicals at Cleveland Play House, Ford's Theatre, Dallas Theater Center, Denver Center for the Performing Arts, Repertory Theater of St. Louis, Maltz Jupiter Theatre, The Cape Playhouse, and Ogunquit Playhouse. TV: *Law and Order*, *Succession*, *The Americans*, *The Guilded Age*, *Believe*. Next up: *Newsies* (The Mundy). Training: U of Minn., and The Barrow Group. Eternally grateful to mom, dad, Mark, and his wife, Joan.



EVAN A. KAUSHESH (*Evan Hansen*) Arden debut. Regional: David in *Amongst the Pile: New Works Presentation* (The Phoenix Theatre Company); Henry in *The Boy Who Cried Wolf*, Mouse King in *The Nutcracker: A Musical* (Arizona Broadway Theatre). Other credits: Benny Southstreet in *Guys and Dolls*, Cosmo Brown U/S & Ensemble in *Singin' in the Rain*, Dippy in *Anything Goes* (Hale Centre Theatre AZ); Beethoven in *Dog Sees God*, Michael Mell in *Be More Chill*, Paul San Marco in *A Chorus Line* (Desert Stages Theatre); William Shakespeare in *Something Rotten*, Jack in *Into the Woods* (Scottsdale Community Players). Thank you to Family and Teachers for undying support. HUGE thank you to the entire team at Arden and the folks at Zuri Agency.



HAILEY LARA (*Zoe Murphy*) is thrilled to be making her Arden Theatre Company debut in *Dear Evan Hansen*. Selected credits include Mimi Marquez in *RENT*, Jo March in *Little Women* (West Chester University) and Vanessa in *In the Heights* (The Pennsylvania Playhouse). She is a sophomore pursuing a B.A. in Theatre with a Musical Theatre concentration and Dance minor at West Chester University. She is grateful to her parents for their constant love and support, and to her grandmother, whose courage in bringing her family to this country made this journey possible.



JULIAN PEREZ (*Connor*) Arden Debut. Regional: *Camelot* (The Wick Theatre); *Young Frankenstein* (The Media Theatre); *A Christmas Carol, The Musical* (Actor's Playhouse at the Miracle Theatre). Education: University of the Arts BFA Musical Theatre. To those who believed in the troubled kid who kept getting told no, I thank you from the bottom of my heart. This goes out to Mom, Dad, Rex, Riley, and the cats. Marin in Mind. Instagram: @julian.e.perez_

Who's Who

STEVEN LEVENSON (Playwright) Steven is a Tony Award-winning playwright, screenwriter, and television writer and producer. His plays include *If I Forget*, *Core Values*, *Seven Minutes In Heaven*, and *The Language of Trees*. He wrote the book for the musical, *Dear Evan Hansen*, which won six Tony Awards, including Best Book and Best Musical, as well as the Olivier Award for Best New Musical. He co-created and executive produced the FX series “Fosse/Verdon,” which was nominated for seventeen Emmy Awards, including Best Limited Series and Best Writing for a Limited Series, as well as for Critics’ Choice Association and Producers Guild Awards, in addition to winning the Writers Guild Award and an AFI Award for Outstanding Series. Other honors include the OBIE Award, two Outer Critics Circle Awards, and the John Gassner Memorial Playwriting Award. He adapted Jonathan Larson’s *tick, tick...boom!*, directed by Lin-Manuel Miranda, for Netflix. He is a graduate of Brown University.

BENJ PASEK & JUSTIN PAUL (Music & Lyrics) Songwriters and producers Benj Pasek & Justin Paul are best known for their Oscar, Grammy, and Tony-winning work on *La La Land*, *The Greatest Showman* and *Dear Evan Hansen*, each of which spawned albums that landed in the Top 10 on the Billboard 200, including multiple weeks at #1 for *The Greatest Showman*, which in 2018 was the world’s best-selling album. This year, they won their first Emmy Award as songwriters of *Only Murders in the Building* and, as a result, achieved EGOT status, joining a rarified list of artists who have won all four major showbiz prizes. Additional film and television credits include Apple’s *Spirited*, Sony’s *Lyle, Lyle Crocodile*, Disney’s live-action *Aladdin*, Dreamworks Animation’s *Trolls*, Amazon’s *Harlem*, Apple’s *Dear Edward*, NBC’s *Smash*, The CW’s *The Flash*, Amazon’s *Pink: All I Know So Far* (Grammy nomination), and FX’s *Welcome to Wrexham*. Amongst their varied stage credits, they made their Broadway debut with the musical *A Christmas Story* (Tony nomination), further adapted into a live telecast for Fox (Emmy nomination); and won their second Tonys for co-producing Best Musical winner *A Strange Loop*. Among their countless honors, they became the youngest winners ever of the Jonathan Larson Award and the first writers for stage or screen to be honored with the ASCAP Vanguard Award. In total, Benj and Justin have each won two Tonys, two Grammys, an Emmy and an Oscar across five distinct projects.

TERRENCE J. NOLEN (Director, Producing Artistic Director) is Co-founder and Producing Artistic Director of Arden Theatre Company. Favorite Arden productions include all-Philadelphia casts of *The Lehman Trilogy*, *August: Osage County*, *Death of a Salesman*, and *Hedda Gabler*; and such musicals as *Next to Normal*, *Sweeney Todd: The Demon Barber of Fleet Street*, *Pacific Overtures*, *Violet*, and *Caroline, or Change*. Terry directed the inaugural production of Arden Children’s Theatre, *Charlotte’s Web*. He has directed eight world-premiere plays by Michael Hollinger, three by Dennis Raymond Smeal, three by Michael Ogborn, two by Rogelio Martinez, and Bruce Graham’s *Something Intangible*. Terry has been nominated for 27 Barrymore Awards for his directing work at the Arden and received awards for *The Baker’s Wife*; *Sweeney Todd*; *Opus*; *Winesburg, Ohio*; *Assassins*; *Something Intangible*; and *Fun Home*. He directed Michael Hollinger’s *Opus* at Primary Stages in New York and was nominated for a Lucille Lortel Award for Outstanding Director. His short film *The Personal Touch* was nominated for an Emmy Award.

CASANDRA KAY (Assistant Director) Arden: *Good Bones*. Upcoming: *For Colored Girls* (Theatre in the X). Regional: *Spring Awakening* (Relic Theatre Company), *Little Shop of Horrors* (People’s Light). PA Shakespeare Fest: *The Last 5 Years*, *The Color Purple*, *Merry Wives of Windsor*, *Sense*

Who's Who

CASANDRA KAY (cont.) and *Sensibility, The Tempest, Henry IV part 2, Winnie the Pooh and Friends, James and the Giant Peach*. Education: DeSales University, BA Musical Theatre. So grateful to have been apart of this beautiful production and getting the opportunity to work with this incredible cast. All my thanks to Terry and our wonderful team. Love to Mom, Dad, Al, Dom, & Gabriel. IG: casandrakaydanubio

ALEXIS WELLS (Stage Manager) Arden: Stage Manager for *August Wilson's King Hedley II*, Assistant Stage Manager for *Romeo and Juliet, RENT, The Glass Menagerie*. Regional: Stage Manager for *La Otra, The Play That Goes Wrong, This Is The Week That Is '24 + '25* (1812 Productions); *Will Sacrifice* (Chester Theatre Company); *Tick...Tick...BOOM!* (Theatre Horizon); *A Christmas Carol* (People's Light); *Crushed Earth* (People's Light/Theatre Horizon); *Farming* (The Crossing); *The Puzzle* (Hedgerow Theatre Company). Assistant Stage Manager: *Unholy Wars* (Opera Philadelphia).

MATTHEW RYAN MELCHIOR (Assistant Stage Manager) Arden: Stage Manager for *The Mountaintop*. Regional: *Caesar* (Philadelphia Theatre Company); *A Summer Day, Archduke, The Half-God of Rainfall, The Comeuppance* (The Wilma Theater); *Legally Blonde, Winter Wonderland* (The Media Theatre); *The Comedy of Errors* (Lantern Theater Company). He is also an actor and musician! Education: West Chester University, BA Theatre. Much love to Hope and his parents! @matthew.melchior

RYAN TOUHEY (Music Director/Conductor): Arden favorites: *Assassins, Into the Woods, Fun Home, Indecent, Once, Gypsy, The Secret Garden, Parade*. Broadway: *Beautiful: The Carole King Musical*. National Tours: *Beautiful: The Carole King Musical*. Regional: *Paradise Square* (Berkeley Repertory Theatre); *Mother Courage and Her Children* (Arena Stage), *Ragtime* (Bay Street Theater), *The Last Five Years* (Milwaukee Repertory Theater); *Tell Me on a Sunday* (Walnut Street Theatre); *Crazy for You* (Pennsylvania Shakespeare Festival); *Diner* (Delaware Theatre Company); *Cinderella: A Musical Panto* (People's Light). Recording: Rock & Roll Hall of Fame singer Darlene Love's album *Introducing Darlene Love* produced by Steven Van Zandt and Columbia Records. AWARDS: Ryan is a Barrymore Award recipient for Outstanding Music Direction for *Man of La Mancha* at Delaware Theatre Company and an AUDELCO Award Winner in New York City for *Dreamgirls*. Education: Bachelor of Fine Arts in Musical Theatre from the University of the Arts.

JAKE COLLINS (Assistant Music Director) Arden debut. Regional: *Man of La Mancha* (Montgomery Theatre); *Spring Awakening* (Relic Theatre Co.); *Beauty and the Beast, A Christmas Carol, Jersey Boys* (Walnut Street Theatre); *The Producers* (Pennsylvania Shakespeare Festival). Education: Emerson College, BFA Musical Theatre. Many thanks to Ryan, Terry, and his family and friends. he/him. @jakecollins_ | jakecollinsmusic.com

BILLY BUSTAMANTE (Choreographer) Arden: Choreographer for *Falsettos, Into the Woods, The Waiter in Tulipomania* and Ensemble in *Pacific Overtures*. Broadway: Assistant Director for *Here Lies Love*. West End: Associate Choreographer for *Here We Are* (National Theatre) and Director for the upcoming new musical, *Straight Forward*. Off Broadway/ Regional: Director/ Choreographer for the world premiere of *Larry the Musical* (Brava Theatre); Director/ Choreographer for *Notes From Now* (Prospect Musicals); Choreographer for *Finn* (Kennedy Center);

Who's Who

BILLY BUSTAMANTE (cont.) Choreographer for *Soft Power* (Signature Theatre). Film/Television: Marc in *The Noel Diary* (Netflix). Education: University of the Arts. Co-founder of Broadway Barkada. Teaching Faculty at Circle in the Square Theatre School and Jen Waldman Studio. Thanks to Peyton, my family and this amazing Company. IG: @BillyBCreative BillyBustamante.com

JORGE COUSINEAU (Set and Projections Designer) Arden: over 70 productions designing sound, sets, and projections. Favorites: *The Lehman Trilogy*, *Assassins* (2023 & 2007), *Fun Home*, *Gypsy*, *Passion*, *Parade*, *The Secret Garden*, *Three Sisters*, *Next to Normal*, *Opus*, and *Sunday in The Park with George*. Regional: *Rinaldo* (The Glimmerglass Festival); *We Shall Not Be Moved* (Pittsburgh Opera); *Titanic* (Fulton Theatre and Maine State Music Theatre); *20,000 Leagues Under the Sea*, *Seedfolks*, *Roald Dahl's Matilda*, *The Musical* (Children's Theatre Company); *When Tang Met Laika*, *The Whistleblower* (Denver Center for the Performing Arts); *Opus* (Primary Stages); *Heroes of the Fourth Turning*, *Language Rooms*, *Scorched* (The Wilma Theater).

LEVONNE LINDSAY (Costume Designer) Arden: *Once on This Island*, *Radio Golf*, *Into the Woods*, *School Girls*; Or, *The African Mean Girls Play*, *Ragtime*, *Gem of the Ocean*. *The Bluest Eye*, *Selling Kabul*, (InterAct Theatre Company); *Lady Day at Emerson's Bar and Grill*, *Much Ado About Nothing* (Pennsylvania Shakespeare Festival). *Kiss, Kill Move Paradise*, (Wilma Theater); *The Garbologists*, *Sweat* (Philadelphia Theatre Company); *Tempestuous Elements* (Arena Stage); *Flyin' West* (Indiana Repertory Theatre). Education: BS in Fashion Design (Philadelphia University); MFA in Costume Design (University of Maryland, College Park). LeVonne is the Costume Shop Manager at Swarthmore College.

THOM WEAVER (Lighting Designer) At the Arden: Over 40 productions including *King Hedley II*, *RENT*, *The Glass Menagerie*, *Gem of the Ocean*, and *Once*. His work has been seen at NYSF/The Public Theatre, Vineyard Theatre, Roundabout Theatre Company, Primary Stages, Alley Theatre, Pilobolus, Signature Theatre (NY), The Wilma Theater, Philadelphia Theatre Company, Lantern Theater Company, Theatre Exile, New Paradise Laboratories, CenterStage, Alliance Theatre, Indiana Repertory Theatre, Huntington Theatre Company, Chicago Shakespeare Theater, Syracuse Stage, Milwaukee Repertory Theatre, Williamstown, Folger Theatre, Cleveland Play House, Round House Theatre, Cincinnati Playhouse in the Park, Hangar Theatre, Spoleto Festival USA, City Theatre, Pittsburgh Public Theatre, and Yale Repertory theatre among others. Six Barrymore Awards, Helen Hayes Award, 2 Jeff Awards, and 2 AUDELCO Awards. Co-Founder of Die-Cast with Brenna Geffers and a member of Wingspace. Education: Carnegie-Mellon and Yale. he/him. www.thomweaverdesign.net

ELIZABETH ATKINSON (Sound Designer) Arden: *RENT*, *POTUS: Or, Behind Every Great Dumbass Are Seven Women Trying to Keep Him Alive*, *Once on this Island*, *Assassins*, *The 25th Annual Putnam County Spelling Bee*, *Into the Woods*, *Ragtime*, *Once*, *74 Seconds*. . . *To Judgment*. Liz is currently residing in Philadelphia, after many years in Pittsburgh where she was Resident Sound Designer at City Theatre Company. Her freelance career includes regional theatre credits at Applied Mechanics, Wilma Theater, Theatre Exile, Simpatico Theatre, InterAct Theatre Company, Inis Nua Theatre Company, People's Light, Walnut Street Theatre, Yale Repertory Theatre, Hartford Stage, and Quantum Theatre. Liz has also had the honor of exhibiting at the 2007, 2011, and 2015 Prague Quadrennials.

AMY L. MURPHY (Managing Director) A Philadelphia native, Amy co-founded the Arden in 1988 with Terrence J. Nolen and Aaron Posner. She is especially proud of the Arden Professional Apprenticeship program and its contribution to the Philadelphia cultural community. A graduate of Susquehanna University, Amy received its first-ever Young Alumni Achievement Award. She completed the Executive Program for Non Profit Leaders- Arts which is a joint program of the Stanford Graduate School of Business Center for Social Innovation and National Arts Strategies. Amy has served on the Board of the Greater Philadelphia Cultural Alliance and Theatre Philadelphia, as well as the Executive Board of League of Resident Theatres. In addition, she has served on panels for the National Endowment for the Arts, the New Jersey State Arts Council, Philadelphia Cultural Fund, Arts & Humanities Arts Council of Montgomery County and Theatre Communications Group. Amy was named a Hepburn Fellow 2008-9 by the Katherine Houghton Hepburn Center at Bryn Mawr College and was the recipient of the Inaugural Betsy Award, at the historic Betsy Ross House in 2025.

ARDEN THEATRE COMPANY Founded in 1988, Arden Theatre Company is dedicated to bringing to life great stories by great storytellers—on the stage, in the classroom, and in the community. We create and produce new work through the Independence Foundation New Play Showcase. The Arden Professional Apprenticeship program trains future theatre leaders, and Arden Drama School classes teach children and teens about the craft of making plays. Our access program, Arden For All, makes our work available to the entire community through subsidized tickets and books for economically disadvantaged young people, and our Arden Arts Scholarship Fund provides scholarships for Arden Drama School classes and camps. The Arden has received 13 Philadelphia Magazine “Best of Philly” Awards, the Arts & Business Council’s Arts Excellence Award, six City Paper “Reader’s Choice” Awards, four Philadelphia Inquirer “Theatre Company of the Year” citations, 96 awards and 456 nominations from the Theatre Philadelphia’s Barrymore Awards for Excellence in Theatre, and was named “Best Theatre Company” by Philadelphia Weekly in 2009. Arden Theatre Company, a professional, nonprofit 501(c)(3) theatre company, is a member of the Theatre Communications Group, the League of Resident Theatres, Greater Philadelphia Cultural Alliance, Philadelphia Convention and Visitors Bureau, and Old City Arts Association.

Accessibility Services



Accessible Seating & Seating Requests

Removeable seats for wheelchairs & Accommodations for comfort, mobility, and hearing or vision needs.



Caption Glasses (CG)

Wearable, customizable closed captioning glasses. Available starting Tuesday, June 2.



Assistive Listening Devices (ALDs)

Amplification of all onstage sounds. Available with headphones or a t-coil neck loop.



Large Print Programs

Enlarged-text printed programs for low-vision patrons.



Open Captioning (OC)

Text display of all dialogue and sounds. June 12 at 7pm & June 13 at 2pm



Audio Description (AD)

Live verbal commentary of all visual elements. June 12 at 7pm & June 13 at 2pm



KultureCity Sensory Tools

All Arden staff are Sensory-Friendly trained. Quiet Area, Social Stories, and Fidgeting Tools available.



Service Dogs

We welcome patrons with Service Dogs to attend our performances.

Visit ardentheatre.org/plan-your-visit/accessibility for more details about our services and offerings.



QUINTESSENCE

Jen Silverman

WITCH

Stephen Schwartz, Roger O. Hirson
and Bob Fosse

PIPPIN

Euripides

MEDEA

William Shakespeare

TWO GENTLEMEN OF VERONA

Patrick Hamilton

ROPE

Tennessee Williams

SUDDENLY LAST SUMMER

Tennessee Williams

THE PARADE

SEASON XVII

www.QTGrep.org
SUBSCRIPTIONS ON SALE NOW



At The Sedgwick Theater 7137 Germantown Avenue Mt. Airy Philadelphia 19119



We Go Further

Friends' Central School is proud of our alumnus, EGOT winner Benj Pasek '03!

Lower School • Nursery-Grade 5
228 Old Gulph Road, Wynnewood, PA

Middle & Upper School • Grades 6-12
1101 City Avenue, Wynnewood, PA

friendscentral.org/visit

2025/26

DINING PARTNERS

Restaurants in Old City and surrounding neighborhoods are ready to welcome you! We recommend these restaurants that support the Arden.

Café Tolia*

26 N 3rd Street
267.687.2533
cafetolia.com
@cafetolia

Calandrino's Old City Vino*

110 N 2nd Street
267.930.7443
oldcityvino.com
@oldcityvino

Cuba Libre*

10 S 2nd Street
215.627.0666
cubalibrerestaurant.com
@cubalibrephiladelphia

The Franklin Fountain*

116 Market Street
215.627.1899
franklinfountain.com
@franklinfountain

Fork

306 Market Street
215.625.9425
forkrestaurant.com
@forkrestaurant

Forsythia*

233 Chestnut Street
215.701.4883
forsythiaphilly.com
@forsythia_philly

Fringe Bar*

140 N Christopher Columbus Blvd
215.375.7744
fringebarphilly.com
@fringebarphilly

High Street Philly

101 S 9th Street
215.625.0988
highstreetonmarket.com
@highstreethoagies

Khyber Pass Pub*

56 S 2nd Street
215.238.5888
khyberpasspub.com
@khyberpasspub

Las Bugambilias*

15 S 3rd Street
267.239.5673
lasbugambiliasphilly.com
@lasbugambiliasphilly

National Mechanics*

207 Chestnut St.
267.761.9209
luchacartel.com
@luchacartelphilly

The Plough and the Stars*

123 Chestnut Street
215.238.0499
ploughstars.com
@theploughphilly

Positano Coast by Aldo Lamberti*

212 Walnut Street 2nd Floor
215.238.0499
positanocoast.net
@positanocoastphilly

Race Street Cafe*

208 Race Street
215.627.6181
racesstreetcafe.net
@racesstreetcafe

Royal Boucherie*

52 S 2nd Street
267.606.6313
royalboucherie.com
@royalboucherie

Stateside Vodka

1700 N Hancock St
215.425.4200
@statesidevodka

Triple Bottom Brewing

915 Spring Garden St
triplebottombrewing.com
@triplebottombrewing

Restaurants with * offer a special promotion to Arden patrons. Please ask your server for details/scan the QR code for more details.

For complete restaurant descriptions visit: ardentheatre.org/dining

Dining Partners as of September 1, 2025



Donate Today to Double Your Impact!

No gift is too small! **Donate before June 30**, and **your gift will be matched dollar for dollar**, thanks to the generosity of the Hamilton Family Charitable Trust! Just scan the QR code, donate online at ardentheatre.org/donate or call us at 215.922.8900 x146.



Donate Online:



ardentheatre.org/donate

"I love working at the Arden. I feel really proud about the projects I've been able to work on and the relationships with the community at large. Philadelphia proved that it is possible to live this artist's life, and to do meaningful work."

- Taysha Marie Canales

Meet Arden Professional Apprentice Class 31!



Pictured (l-r): Hardik Gupta, Sara Alvidrez, Fable Rowell, Madison Luckey, JT Hawkes, Amelia Kovach

Over the last seven months, our class of six Arden Professional Apprentices (APAs) have been hard at work learning the ins-and-outs of a professional theatre, tackling every department at the Arden. Now, they've been tasked with an end-of-year capstone project: fund, produce, and mount a full showcase performance demonstrating all they've learned over their time at the Arden!

In preparation for their showcase, get to know APA Class 31 and learn what the apprenticeship is about!

Check out the Arden Blog to learn more about APA Class 31, their showcase on June 15, 2026 on the Arcadia Stage, and how you can support the next generation of theatre professionals.



\$100,000 and above

Hamilton Family Charitable Trust
PA Department of Community
and Economic Development
The Pew Center for Arts & Heritage
Rosenthal Family Foundation
Shubert Foundation
William Penn Foundation

\$50,000 to \$99,999

Harmelin Media
Wyncote Foundation

\$25,000 to \$49,999

Anne M. and Philip H. Glatfelter III
Family Foundation
Bell's Market
The Horace W. Goldsmith Foundation
PECO Energy
Harold and Mimi Steinberg
Charitable Trust

\$10,000 to \$24,999

Arcadia Foundation
Fox Chase Bank Charitable Fund
Gray Fin LLC
Independence Foundation
John Ciccone Playhouse Charities, Inc.
The Haley Foundation
The Sylvia W. and
Randle M. Kauders Foundation
Pennsylvania Council on the Arts
Pincus Family Foundation
PNC Charitable Trusts
The Suzanne Roberts Cultural
Development Fund
TD Charitable Foundation
Truist
Univest Financial
Zeldin Family Foundation

\$5,000 to \$9,999

Anton Charitable Trust
Bendita Foundation
Civic Foundation
Comcast Corporation
Cuba Libre+
Ethel Sergeant Clark Smith
Memorial Fund
Janet Yaseen Foundation
Lincoln Financial Foundation
Parkway Corporation
Sun East Foundation

\$2,500 to \$4,999

Charlotte Cushman Foundation
Christopher Ludwick Foundation
Connelly Foundation
Elliott-Lewis Corporation
Franklin Fountain+
Fringe Bar+
Fulton Bank
Hamilton Family Foundation
Greater Philadelphia Cultural Alliance
Las Bugambilias+
Linda and David Glickstein Fund
of the Philadelphia Foundation
Philadelphia Activities Fund
The Plough and the Stars+
Positano Coast by Aldo Lamberti+
TCF- The Community's Foundation

\$1,000 to \$2,499

Alex J. Ettl Foundation
Cafe Tolia+
Calandrino's Old City VINO+
Dolfinger-McMahon Foundation
Forsythia+
Firsttrust Bank
Hassel Foundation
Khyber Pass Pub+
Christian R. and Mary F. Lindback
Foundation
National Mechanics+
Race Street Cafe+
Rittenhouse Foundation
Royal Boucherie+
Triple Bottom Brewing+

Up to \$1,000

Actors' Equity Foundation
High Street Philadelphia+
Greenberg Traurig- Northern VA
The R. Andrew Swinney Presidential
Achievement Fund of the
Philadelphia Foundation
Quaker Printing+
Weavers Way Co-op+

Employee Giving, Matching Gift, Donor Advised Fund Partners

American Online Giving Foundation
Bank of America
Bristol Myers Squibb
Cadence Design Systems, Inc.
Cencora
Charities Aid Foundation of America
The Chicago Community Foundation-
CIGNA Corporation
Comcast Corporation
DAFGiving 360
Dell
Dun & Bradstreet
Equitable / AXA Foundation
Every.org
Exelon Corporation
Fidelity Charitable
Friends of Education
Give Lively Foundation
Global Atlantic Charitable Gift Fund
Google
GS Donor Advised Philanthropy Fund
for Wealth Management
Impact Assets
Independence Blue Cross
Independence Foundation
Intel Foundation
Jewish Communal Fund
Johnson & Johnson
JP Morgan Chase & Company
Macy's/ Bloomingdale's
Mastercard
McKesson Foundation
McKinsey & Company
Morgan Stanley Gift Fund
Merck Foundation
National Philanthropic Trust
PayPal Giving Fund
PECO
Penn's Way
The Philadelphia Foundation
Pfizer
PricewaterhouseCoopers, LLP
Radian Group, Inc.
Renaissance Charitable Foundation
Stifel Charitable Inc.
Susquehanna International Group, LLP
TD Bank
Thrivent Charitable Impact & Investing
Toast
United Way
Vanguard
Vanguard Charitable
William Penn Foundation

*This list represents gifts made
through May 7, 2026*

+ Denotes a gift of goods or services

ARDEN SUMMER CAMP

For Kids and Teens



Action packed theatre classes taught
by theatre professionals!

Learn more and register online at ardentheatre.org



ANNOUNCING ONE OF OUR
2026/27 ARDEN CHILDREN'S
THEATRE SHOWS

The Wonderful Wizard of Oz

By L. Frank Baum

Adapted and Directed by Whit McLaughlin

Join Dorothy and your favorite Oz characters, the Scarecrow, Tin Woodman, Cowardly Lion, and more on an adventure. Experience this inventive and imaginative twister of a tale with the whole family, where courage and friendship lead the way.

PLUS 1 more show to be announced!



**BUY BOTH
AND SAVE TODAY!**





The
Sylvan Society
Arden Theatre Company

Grounding the Present, Nurturing the Future

The Sylvan Society recognizes individuals who support the Arden's work by making annual gifts of \$1,000 or more.

The special generosity of our members enables the Arden to tell great stories by having the resources to achieve the highest level of artistic quality.

*This list represents gifts made through May 7, 2026

Oak Grove
(\$50,000 and above)

Nancy and Bob Elfant
Joanne and Jon Harmelin
Monica and Philip Rosenthal
Harvey B. Swedloff
June and Steve Wolfson

Chestnut Grove
(\$25,000 - \$49,999)

The CHG Charitable Trust
Kate Groark-Shields
Michael Grove
Jessica Phelan
Lee and Chris van de Velde

Sassafras Grove
(\$10,000 - \$24,999)

Sally Bailin
George Benes and Michael Mallee
Sandy and David Beswick
Lois G. Brodsky
Anne Cook and Russ Troyer
Stephen Falchek and
John Offidani III~
Christina and David Fryman^
Elizabeth Gemmill
Terry and Ann Marie Horner
Deborah R. Kravetz and
Bill Robling
Robert and Risa Lavizzo-Mourey^
Peggy Morgan and Patty Bowman
Charles Rose
Bernard and Camille Rosenberg

Cherry Grove
(\$5,000 - \$9,999)

Anonymous (2)
Brian Abernathy and
Elizabeth Ireland
John R. Alchin and Hal Marryatt
Brett and Nan Altman
Richard and Kathleen Aregood
Bethany Asplundh
Andrew Bickford and
Kristina Denzel Bickford
Brenda and Marty Brenner
Diane Dalto and
Richard Woosnam
Ann E. Diebold
Deb Dorsey and Mike Green
Laura Drake
Shannon and Ted Farmer
Jill Fisch and John Gassenheimer
Richard Harris
James and Carolyn Hessinger
Peter* and Louise Kelly
Valerie Koscelnik
Robin and Saifuddin Mama
Elesa Nelson
Alexis and Ed Pappas
Ceth and Sam Plum
Joel and Bobbie Porter
Rosalyn K. Robinson and
Warren B. English
Sid and Ruth Rosenblatt
Sharon and Irv Shapiro
Hether and Don Smith
Rosalyn and Stephen Weinstein

Nancy Brent Wingo
Hope Yursa

Filbert Grove
(\$2,500-\$4,999)

Charles Arnao and
Rosemary Watt^
Carol Beam
John and Amy Bitman~
Laura Carey
Bob and Cheryl Carfagno
Karl Carter
Barbara Cobb
John Coleman and Diane Runyan
Kortney Cruz
Fern and John Culhane
Michael A. and Edward C. Donato
Paul and Judy Farber
Donna and Norman Faye
Elizabeth Fernández-Viña~
Linda and David Glickstein
Jennifer Harmelin
Eileen Heisman and
Marty Tuzman
Holly and John Kleimo
Kenneth and Eve Klothen
Peter J. and Sandra Klugman
Marilyn and David Kraut
James Kronzer
Janice Madden and Carl Sheingold
Linda McAleer
Amy Murphy and Terry Nolen

Sylvan Society cont...

Kimberly C. Oxholm and
Carl Oxholm III

Ron and Pam Pontano

E. Graham and Elizabeth Robb

John and Claire Rodgers

Ellen Schwartz and Jeremy Siegel

Kathy Sernak

Patricia Smialkowski and
Ben Kaplan

Gayle and David Smith

Keith and Jim* Straw

Stephen and Kathy Thompson

Allison Weissman,
In Honor of Bebe Maritsis

Mulberry Grove

(\$1,000-\$2,499)

Anonymous (9)

Jerry Abelson and June Izdal

Joey Abramowicz and Jeff Coon

Hank Adamczyk and Iris Melendez

Becky and John Adams

Diane and Katie Alessi

Stan and Lisa Altman

Winnie Anderson and Eric Lien

Jennifer and Stephen Arms

Jim and Janet Averill

Sheryl and Allen Bar

Sheila Bell

Jay and Nancy Berkowitz

Linda and Mark Bernstein

Bill and Brenda Bertrand~

Ian and Ryane Nicole Beutler

Louis Bluver

Reid Bodek

Tony Brown

Ann and David Brownlee

Elizabeth Campbell,

In Honor of

Eva, Cora and Maisie

Christopher and Jeffrey Carver

Dr. Lawyer and Rosetta Chapman

Rayenne A. Chen

Ed Chew

Brian Cleary

Cordelia Clement

Marc and Margie Cohen

Kelly Colarelli~

The Susan Lavine

Coleman Charitable Fund

Gregory L. Coleman

Katherine Davies

and The Garland Family

Ellen Deacon~

Joy De Jesús and James Reynolds

Robert M. Dever

Tobey and Mark Dichter

Gene Dilks

Eric Dube and Gregory Simone

Jonathan V. Edmondson^

Carol Eicher

Jonathan and Nancy Ellsworth

Epstein Family Charitable Trust

John Erickson and Harry Zaleznik

Susan Extein and Lucy Hyatt

Lisa Fair

Mr. Jeffery* and Mrs. Reva

Farenback-Brateman

Dr. Mark and Mrs. Rene Feitelson

Jeanne Fisher

Carole M. Foley

Dieter and Sara W. Forster

Ellen and Tim Foster

Sandi Foxx-Jones

Nancy Freedman,

In Honor of David Pressel

and Jill Feldman

Lou and Rhoda Fryman

Paula Fuchsberg

Chekemma Fulmore-Townsend

Dan Gannon

Joel R. Gardner and

Holly A. Phelps

Julie and Tom Gennaro

Joseph and Jane Goldblum

Janet Lynne Golden

Terry Graboyes

Kelly Grattan and John Lopez~

William and Joan Greenfield

David C. and MaryJane* Hackney

Ann and Glenn Haig

Anne Halkedis^

Ellen and Steve Harris

Hon. Lillian Harris Ransom

Dr. Valerie Harrison

Don and Lynn Haskin

Janis Hawes and

Patrick Cunningham

Charles W. Head Jr. and

John A. Faggotti

Heidi Hertfelder^

Karen and Mark Hite

Deborah M. Hluchan

Phyllis Hochberg and Stuartz Katz

Diane Hlywiak

Diane Hofer

Karl Janowitz and Amy Goldman

Tim and Renee Jessell

Jill Hyman Kaplan and

Elliot Kaplan

Rachelle and Ron Kaiserman

Margie and Scott Kasner

Holly Kinser

Carol Kelley

Steven Knepper

Thomas and Anne Kohn

Bernadette Koller

Cyndy Krieger

Mary Ellen Krober

Cyana La Divertida

Mr. Robert Leventhal and

Ms. Cheryl Getty

Michael Litchman

Pamela and Paul Litwack

George A. Loeb

J.C. and Melissa Lore

Michael MacFarland~

Richard Maimon and Susan Segal

Lee Marks* and Lisl Zach

Mary Ellen Marzullo~

Barb and Don Matheson

John and Amy McCawley^

Kathy McMaster

Peter and Laura

(nee Beckie) McQuaid

Sylvan Society cont...

A.C. Missias	Alice Reyes	Donna and Andrew Wechsler
Joann Mitchell	Joy Rickabaugh	Thomas and Dawn Weiss^
Leslie and Michael Molder	Franklyn and Cintra Rodgers	Ellen Yin+
The Moxley Ott Family^	Jane A. Rose, CPA/PFS	Beth Zatuchni and Jerry Satlow~
Adam Mussell and Kate Whittington~	Mike Salmanson and Tobi Zemsky	Tom and Jackie Zemaitis
Marjorie Neff and Dan Winterstein	Gisèle Sambar Bathish	Heidi Zod
Kathleen Nelson and John Kromer	Becky Sassi	
Arnold and Shelley New	Geoff Schmidt and Marie Wong	
Hung Nguyen	Kim and Ross Schmucki	
Mary Ivy and Roger Noone	Terri Schwomeyer	
Michael Norris and Matt Varrato	Genieve and Clete Shields~	
Susan Odessey	Roy and Lee Shubert	<i>* Denotes a deceased supporter</i>
Michael Ogborn and Robert Soslow	Laura and Ron Siena	<i>+ Denotes a gift of goods or services</i>
Barbara Oldenhoff	Paulette Singleton	<i>^ Includes a matching gift</i>
Dan O'Neil and Travus White^	Kathy and Don Smith	<i>~Includes a monthly gift</i>
Robert Overell and Lisa Glasser	The Spector Charitable Trust	<i>This list represents gifts made through May 7, 2026</i>
Don and Barbara Parman	Rudy Sprinkle and Andrea Barsevick	
Brian and Melissa Pinheiro	Mike and Shannon Stellato~	
Claire and Lud Pisapia	Robert and Sydney Stevens	
Laura and Douglas Pratt	William K. Stewart, Sr. Foundation	
David Pressel and Jill Feldman	Eric Tamulonis and Deirdre Gibson	
Salvatore Priore	Adrienne Topic	
Aneira Puttaswamy	April J. Tvarok	
Alan Reinach and Dana Perlman	Jason Vail	
	Donna Visioli~	
	Lewis and Hella Volgenau	

THE LEGACY SOCIETY

Arden Theatre Company would like to recognize the following supporters who have included the Arden in their wills or estate plans. Their planned gift provides support which will help sustain the Arden's work for decades to come.

Anonymous	Grace Goglewski and Eric Schoefer	Donald Martin and Richard Repetto*
Ms. Peggy Anderson*	Gary R. Grob*	Peggy Morgan
Stanley Baurys*	Kelly Grattan and John Lopez	Tom Petro and Kris Messner
Ivy Bayard*	David C. and Mary Jane Hackney	Kristen Phillips and Matt Schreck
Jane Berryman	Jim and Carolyn Hessinger	Renee E. Polsky*
Louis Bluver	Suzanne and James Hill	Madeline Portnoy
Mary P. Burr	Alan and Nancy Hirsig*	Irene M. Reiter*
Pearl M. Carpel*	Mary Ellen Krober	Dr. Harry Rosenthal
Larry S. Friedman* and Dean H. Rishel	DawnLynne Kacer and Family	Marilyn and Dean Staats
Ellis Ginsberg*	William A. Loeb*	Carolyn and Richard Weaver
Peter Gistelinct and Kim Bloom		

We hope you will consider including the Arden in your will or estate plans. To be recognized as a member of the Legacy Society or with questions regarding planned giving, please contact Jessica Abel, Director of Development, at 215.922.8900 x149.

Join Sylvan Society today and secure your VIP benefits for the 2026/27 Season!

With an annual donation of **\$1,000 or more**, Sylvan Society members make it possible for us to fulfill our mission while enjoying concierge services, exclusive behind-the-scenes opportunities, and special recognition for a full year.

"Over the years, we've had so many wonderful experiences. We love the appreciation activities, play-related programs, and special events designed for Sylvan Society Members."

- Marilyn and David Kraut
Sylvan Society Members since 2017

This is a great time to join our community of leadership donors and deepen the role you play in helping us achieve the highest level of artistic quality.

Join the Sylvan Society or learn more here:



ardentheatre.org/sylvan

If you've already subscribed to the 2026/27 season, contact us to **learn how you can combine your subscription with a donation** for an even greater impact at the Arden.



Get closer to the artistic work



Ensure arts access for children



Enjoy an engaged community

To learn more, please contact Orelí Uzdavinis at 215.922.8900 x131 or ouzdavinis@ardentheatre.org

Thank You to Our Supporters

\$500-\$999

Anonymous (3)
Eileen Abel
Lawrence Abramson
Kim and David Adler
The Amato Family
Maureen Barrett and Mike Templeton
Ellen Baxter and Robert Kavash^
Raymond Becker and Richard Wilson
Megan Bellwoar and Michael Hollinger
Barbara Bisgaier
Jacob and Crystal Brogan
Vincent Burkheimer
Joseph and Helen D'Angelo
Steve and Kelly DeAngelis
Kathy Duffy
Jason and Jennifer Ellsworth-Aults
Anne C. Ewers
Cheryl and Steven Feil
Janet Ginzburg and John Caskey
TJ Harris
Rhoda Harrison
Glenn Holsten and Peter Dobrin
Nora and Peter Hunt-Johnson
Jane Kamp and Thomas Lloyd
Barbara and Jerry Kaplan
Ms. Leslie A. Kase
Shira Kramer and Leon Josowitz
Neil Kutner and Naomi Grabel
Ruth and Peter Laibson
John and Martha Lubell
Susan Mack
Lynn Marks and Clifford Pearlman*
Nancy Middlebrook
Susan and Alan Miller
Siddhartha Misra^
Linda Moskowitz
Larry Pace
Teresa Peterson
Barbara Porter
Janet and John Poth
Paul Rabe and Cheryl Gunter
Susan and Steve Reisbord
Rachel R. Reynolds
Daniel and Faye Ross,
The Ross Family Foundation
Dan Rothermel and Michael Hairston
Carole M. Saft
Jesse Saunders
Karen Schermerhorn and Evan Seymour
Larry and Carol Segal
Joseph and Louise Shaffer^
Wystan Simons
Taylor Slaughter
Stuart and Paula Solomon,
In Honor Of Sydney Solomon

Kathleen Stephenson
Susan and Jim Strohman^
Elena Tappit-Emas
Vivian Weinblatt
Joyce Weiner and Albert Tedesco
Margo Weishar
Abigail Wolf and Jonathan Weiss
Joan and Dane Wells

\$250-\$499

Anonymous (3)
Stuart M. Adair~
Jay Anstee
Robert and Sandy Clay Bauer
Pat and Tom Bender
Sue Bentson
Sara and Bruce Berger
Ruth Berman
Charlotte H. Biddle
Fern and Robert Billet
Linda and Alden Blyth
Tom and Mary Pat Boyle
Barbara Bromfield
Riley Brown
Carol and Allen Bonner
Wayne Bullaughey
Stephen and Eleanor Bulova
Monika Burke and Kresimir Starcevic
Chip Capelli, In Honor of Amy Murphy
Elizabeth Cerkez and Alec Schoenfeld
Leah Chaplin and Eileen Gildea
Diane and Patrick Close
Mark Cohen and Marty Johnson
Michael M. Coleman
Janet and Richard Conn
Carol Cook
Marsha Covitz
Sara and Allan Crimm
Jill, Katie and Hank Croft
William Diebold and Deborah Freedberg
Eric and Kathy Dobrzynski
Stuart and Diana Donaldson
Robert Earle^
Norman and Carolyn Ellman
William Ewing
Jay Finestone and Randy Jill Schwartz
John and Nancy Fischer
Jacqueline Foldesy
Adam Ford
Karni Frank
Carol Fuoco~
Brenda Furtak
JJ Garcia and Charlie Dreisbach^
David and Donna Gerson
Teresa Gillen
Scott and Lynda Glading
Diane and Frederic Graboyes

Carol Gregory
Dennis Grubb
Trudy and Paul Gutterman
Marlane and Harvey Guttmann
Carol Hauptfurer
Karen Hennes
Lauren Hersh
Mike and Janice Hinksoin
Terry Hirshorn
Kathleen and Andrew Hohenadel
Michael J. Hozik and Margaret L. Rea
Thomas Hurster and Jacqueline Salmon~
Jim Hutchison and Nanci Ritter
Anna Jacobsen
Timothy and Carol Johnson
Anne and Craig Jorgensen
Lisa and Perry Kahn
DawnLynne Kacer and Family
Adam Kamens
Phyllis Kauffman
Douglas and Ruth Keating
Jill Kemp
Michael and Marie Kenis
Kate Kidder
Stephen Kieran
Chrissy Kind and Ralph Pomponi
Rachel and Will Kipnes
Brian and Caren Kirschner
Paul and Michelle Kleschick
Bea and Norm Leopold
Sharon Levin
Norman and Sylvia Lieberman
Robert Ludwig and Joan Ryder
Cirel and Howard* Magen
Linda and David Marder
Lynn Mark
John McCormick and Kenneth Schmitt
Arthur and Sallie Melvin
Adrienne Mendell
Melanie Miller
The Kathleen J. Moyer Charitable Fund
Christopher Mullins
Pamela Nelson
Maryanne Noel and Philip Friedman
Frances Novack
Paul Nutaitis and Robert Clark
Timothy O'Malley
Catherine Ormerod
Enrico Pagnanelli
Robin Palley and Henry Brann
Joseph Palumbo
David and Amy Pollack
Ilene and Coleman Poses
Nick and Peg Potalivo
Krista Reichard, In honor of RENT cast
Kurt and Mary-Ann Reiss
Michael Riccardi
Robin Rifkin and

Thank You to Our Supporters

Michael Silverman
Claire Rocco
Edward and GERALYN ROCK~
Robert L. Roessler
Maxine Romano
Len Romberg
Liz Rosen
Richard and Anne Rosenberg
Daniel and Corey Rudderow
Marilyn Sanborne
Perlita and Frank Schorfheide
Bonnie Schorske
Lauren and Daniel Schwartz
Harry Segal
Polly Shaffer
Jim and Cathy Shippen
Sebbie and David Silver
The Snyder Family
Ellen Somekawa and Eric Joselyn
Robert Stewart and
Barbara Barnett-Stewart
Gay Strickler, In Honor of
Anne Cook
Misha Swanson
Trudy Sykes
Richard Urbani
Carol and Paul Vahlstrom
Helene and Bill Van Hoesen
Stephanie and Darrell Velegol
Annalouise Votta
Barbara Wasserman

David Warshal
Marlene Weinberg
Shelly and Fred Weiner
Richards Willis and Linda Hartnett
Linda Witt and James Marsh
Michael and Teresa Zink

\$125-\$249

Anonymous (9)
Jennifer Allegra
Hale Allen
Virginia Alpaugh~
Jonathan Anolik
Susan Apkon
Cecily Banks
Maria Banks
Judy Barrett
Stacy Bartram
Robert and Dandy Bauer
Terry Bayer
Susan Becker and Aaron Rubin
David Belanger and Joseph Erdeljac
Barbara Bell-Hawkey
Jean Bennett
Sandra C. Bennett
Barry and Marilyn Bevacqua
Girish Bhat

Lynn Biondi
Christine Blumenthal
Janice Bogen
David Bolles
Toni Bonnette
Ms. Linda Borson
Marcia Bower
Miriam Bowerman
Stanton and Jill Braid
Alexandra Brock
Amy Brantz and Edward Bedrick
Joseph and
Mary Lou Breidenstine
Ed Broderick and Erin Duffey
Maureen Brown
Peter Brown
Aimee Brywka
Carol Buettger
Jeanne Calloway
Shellie Camp
Sarah Campbell
Mr. Keith Case
Debbie and Alan Casnoff
Caroline M. Castagno
Steve Castleton
George and Barbara Chalmers
Mrs. Patricia Chamberlin
Janhavi Chandra
Kat Christopher
Randi Chud and Bob Frey
Ronnie Cimprich

Escape To Havana

THEATER MENU

\$39 | 3 course menu

Mon-Fri 4-7 pm | Sat-Sun 12-7pm

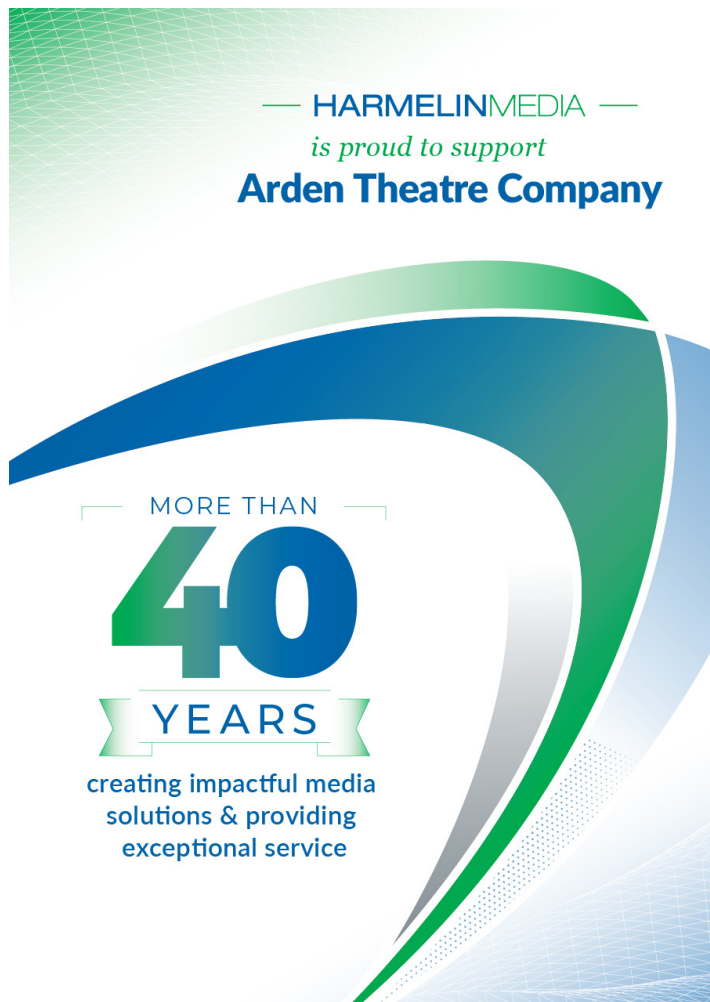
located at 2nd & Market Sts

CUBA LIBRE

★ RESTAURANT & RUM BAR ★

Thank You to Our Supporters

Mayda Clarke
Vanessa Cohen
Lita Cohen
Barbara AC Cohen~
Rick and Carol Collier
Ms. Nancy Conahan
Simon Connor
Betty Cooper
Donna Cooper
Barbara Cortese
Daniel Corti
Robert Craig
Cynthia D'Ambrosio
Todd and Christine Darr
Jennifer Davies
Bill Davis and Lisa Handler
Rhonda Dickey^
Ana Diaz-Diez
Katarzyna Do
Harriet Dobin
Margaret M. Dolan
Elise Drake
Barrie DuBois
Donald and Geraldine Duclow
John Dulik and Sandra Folzer
Ryan Dunne
James Eberwine
Harvey and Faith Edelman
Michael Edelman
Jeff and Michelle Eichen
Richard Elgart
Jennifer and John Eory
Ted and JoAnn Erfer
Judi Field and Martin Getzow
Pamela M. Fisk
Joan Flank
Kimberly Foster^
Irene Frangatos
Allan P. Freedman and
Amy Rappaport
Douglas Frenkel and
Marlene Weinstein
Christine Fricker Moore
Cheryl Friedenberg
Matt Fuss
Dennis Gallagher
Miriam Galster
Janet-Lynn Garrabrant
Greg Gephart
Jamie Giambrone
Joan D. Gmitter
Illse Goldfarb
Chris Gray
Cheryk and Jon Green
Tierney Griffin
Michelle Grimley
Craig Gunnett
David and Myra Gutin
Nava Hall and John Lionarons
June Hament
Ben and Patricia Haney
The Hankenson Family



Elaine Harris
Philip Harvey
Susan Havens-Lang
Jenn Hayden
Susannah Henderson
Wendy and Steve Hess
John Heward~
John and Marcia Hiehle
Joanne and Michael Hinton,
In Honor of Harvey Swedloff
Cindy Hoffman
Esther and Robert Hornik^
Caren Hosansky
Steven Humphreys
Thomas Hurster and
Jacqueline Salmon~
Dave Huting
Dave Ingram
Rinu Jacob
Hildy Jaffe and Dan Lasdon
Martha Johnston
Christina Jones

Debbie Joyner
Edward Kagan
Mr. Bradley Kaye
Lisa Keiner
Jill Kemp
Suzanne King
David Klein
Ken, Eva, and Aaron Klein
Marlena Kleit
Elena Koshkina
Vicki and Don Kramer
Enid Krasner and Alan Rothenberg
Doug Layne
Susan and Howard Levinson
Ina Li
Norman and Sylvia Lieberman
Mary Lee and Bill Lieser
Laurel and Robert Lipshutz
Linda Litwin
Diane and Michael Love
Joseph M. Manko
Bill and Randi Marrazzo

To join the *Sylvan Society* or for more information on how you can support the Arden, please contact Orelí Uzdavinis, Manager of Individual Giving, at 215.922.8900 x131 or ouzdavinis@ardentheatre.org

Thank You to Our Supporters

Linda and David Marder
Fran Martin
Jane Martin
Ken and Margery Maurer
Christopher McAndrew
Jane O. McCahill
John McCormick and
Ken Schmitt
Patricia McDonough
Victoria McFarland
Michelle McFarlane
Barbara McGlynn
Micheline McManus
John McMillan
Adrienne Mendell
Joanne Meredith
Karen Merrill
Cheryl and Gerald Meyer
Nancy Middlebrook
David and Concetta Milano
Katie Milgrim
Sandra and Martin Miller
Melba Moore
Shannon Mullican
Kenneth and Susan Myers
Linda Nelson
Jennie Nicolayev
Laura Nicoletti
Etta and Charles Nissman
Janet and Dennis Novack
Lynda Orfanelli
Jo-Ann Oser
Linda Osler
Dr. Douglas Overtoom
Diane Panepresso
Jason Pantano
Anne Peniazek
Bob Perdick and Lenny Smith
Mary Perkins
Matthew Pettigrew and
Mary Martello
Andrew Pettit
Marsha Pincus
Martha Platt and Marlis Kraft
Elizabeth and Jeffrey Podraza
Florence Poris
Dr. Nancy Post
Michelle Pryor
Mike Pulsifer
Mark and Karen Reber
Andrew Ribbe
Kelley Roberts
Adriana Robinson
Sue Roh
Caroline Rogers
Lou and Laura Romano
Carey and Robert Roseman
Maxine Rosen
Shelley Rosenberg
Edwin and Sally Rosenthal
Carole Roskoph
Michael Roswell
Lila and Vincent Russo
Bill and Joan Saidel
Leslie Schlessinger

Nathan Schatz
Julianna Schauerman
Nathan and Dolly Schnall
Doron Schneider
Jill and Kerry Schuman
Judy Schwan
Evelyn and Harold Schwartz
Janet Sclaroff
Gail Scott
Robin Siegel
Edward Senn
Jesse Shafer
Philip and Lind Shalanca
Claudia Simon
Alisa Skatrud
Bruce and Penny Smith
Rhonda Smith
Alison Smith
Wayne Snover and Janet Tebbel
Hillel Soifer
Jeremy Souder
David and Daria Spingler
Marilyn Staats
Alex Staley
Martha Stan
Konnie Stark
Dr. Christina Stasiuk[^]
Stephanie A. Steed
Thomas and Molly Suddath
Margaret Sulvetta
Sylvia Szpak
Daniel Szyld and Kathleen Ross
Linda R. Tabas
Michael Tardis
Letty D. Thall
Tyrone Thomas
John Thomas
Kelvin K. Thompson Sr.
Marian Tracey
Judy Trailer~
Bryan Ulishney[^]
John Urofsky
Kellee Van Aken
Claudia Vanwyk
Leonard and Nancie Velcik
Nora Vizzachero
Patricia Vogler
Annie Wagoner
Marc and Tova Walton
Leonard Wasserman
Michael Webber
Sarah Weinstein
Davis Weiss
Teresa Welsh
Constance West
Gwendolyn Wiley
Joy Wiltenburg
Angela and
Michael Winterrowd~
Karen Wittig
Dafna Yachin
Danielle and Howard Yermish
Diana Zalewski and
Edward Fink[^]
Bruce Zewe

Morris Zimmerman

\$75-\$124

Anonymous (10)
Anonymous, In Honor of
Arden Drama School
Scholarship
David and Eileen Abels
Dinah Abelman, In Honor of
Charlie Rose
Linda Adams, In Honor of
Peter Adams
Diane Ajl
Andrew Amuso
Mary Anthony
Howard and Patricia Anton
Cheryl Apprey
Phil Argyris
Anne Arian
Sandra Arnold
Jody Artur
Luanna Ausen
Anne Ayers
Carl and Pat Bach
Theodore Bahner
Elizabeth A. Baker
Pam and Earl Ball
Deborah A. Bambino
Theresa Baraldi
Ann Barbarin
Janice Barbour
Fred Allen Barfoot
Sally and Morris Barron
Peter Bartkowski
Nathalie Bartle
Joseph Bartman
Lean Batchis
Chris Batcsics
Amanda Bauman
Frances and Michael Baylson
Nancy Bea
Gregory Beasley
Thomas and Eileen Beck
Judy Beck
Flora Becker
Jim Becker
David Belanger
Ian and Carolyn Bell
Michele Bennett
Sandra C. Bennett
Mr. David Berch
Andrew Berenato
Adam Berger
Irene Berkowitz
Connie and Dick Berman
Andrew Betts
Barry and Marilyn Bevacqua
Linda Bianchi
Cordelia F. Biddle
Belinda Birnbaum
Christine and Chris Bischoff
Wendy Blackburn Eastland
Charles and Mary Blakinger
Jocelyn Block

Thank You to Our Supporters

Wayne and Marcia Blodgett
Ines Bloom
Lori and Giovanni Blount Cucchiaro
Cynthia Bohse
Rebecca Bolden
Jane Bonenberger
Sonja Bontrager
Linda and Andy Borson
Iris and Michael Boshes
Viola W. Bostic
Janet Bowker
Mary Ann Boyer
Carolyn Braciszewski
Edward Brazell
Thomas Breeden
Jennette Brian
Ira Brind
Eadie and Allan* Brooks
Judith Broudy
Dorothy Brown, In Honor of
friendship with Libby Rosof
and Murray Dubin
Gary Brownstein
Erica Brunette
Lisa Brown
Patricia Brunker
Eleanor Buenafior
Janice Burgh
Nora Burrige
Crystal and Tom Bush
Amber Bush
Alexis Buss
Kathleen Butts
John Calaitges
Ann Callaway
Francis and Mary Calter
Ms. Carol Campanelli
Holly Campbell
Joseph Candeloro
Denise Canner
Hugh Cannon
Erica Carpenter
Carol Carroll
Donna Casciola
Joseph Casey^
Lillian and William Cassel
Troy Cawley
Scott Chambley
Julia Chapman
Kathy Chase
Joan Chmiel
Jolley Christman
Kathleen Cipparone
Alex Ciullo
Ruth Clauser
Isabel Cochran
Beth Cohen
Matthew Cohen
Miles Cohen
John Collett
Kimberly Collins
Jane Combrinck-Graham
Colleen Conaty
Mr. John Concannon
Jim Connell

Michael Connor
Janet Connor Love
Gavin Cooper
Donna Corder and
Brent Groce
Pamela Costanzi
Keith Cox and Virginia Mallonee
Abigail Coyne
B. Karen Coyne
Christine Coyne
Stephen Craig Family
Bill Creelman
Sara and Allan Crimm
Beckwith Cromer
Gwendolyn Croston
Kortney Cruz
Paul Curcio
Louise Curl Adams
Richard Curley
Kathleen Curran
Lynne Cutler
Jessica Dale
Dahvia Dalton
Bart Davidoff
Gilbert Davis
Adam Davis
Thomas and Eileen Davis
Gina Daviso
Katy Dawley
Jane Day
Peggy de Wolf
Nancy DeCarlo
Betsy Decyk
Nancy Deibler
Jennifer Deja
Colleen DeLeo
Emilia Demarco
James Derr
Mrs. Darlene Di Paolo
Helen Dichter
Lori Dick
Nergis Dincer
Kathy and Eric Dobrzynski
Joanne Donahue
Ms. Donohue
Margaret Dooley
Patrick Dorsey
David Dotzert
Judith Drasin
Iris Duffield
Regina Duffin
Shannon and Pat Dunn
Lisa Dustin
Shirley and Wayne Dustman
Jonathan and Ella Edwards
Ms. Gladys G. Eilberg
Ricki Eisenstein
Laura Ekstrand
Linda V. Ellsworth
Mary Louise Elston
Beverly Emanuel
Jack Ende
Edmund and Judy Erde
Jack Erickson
Arturo Espinoza Jr.

Sonja and Thomas Eveslage
Susan L. Extein and Lucy Hyatt
Sonia Fair
Karen Falcon
Mrs. Kate Fay
Michael Feicht
Cari Feiler Bender and
Rodd Bender
Carolyn Ferber
Winifred Fessenbecker
Judi Field and Martin Getzow
Leila Finkelstein
Ross Firestine
Catherine Fischer
John Fitch
Paul Fitzgerald
Jean Fleschute
Karen Flora
Lena Flower
Moriah Ford
Tammy Forstater
Robert Fossler
Kenneth Foster and
Mary Jenkins
Kenneth Frank
Ms. Judy Frank
Allyson J. Frank
Marisa Freda
Allan P. Freedman and
Amy Rappaport
Leslie Freeman^
Paulette Freeman
Michael and Helene Freidman
Lori Friel
John Fuchs-Chesney
Stephanie Fuller
Valerie Fusco
Richard J. Gaglianese
Anne Galbally
Judy Galgon
Eileen Gallagher
Nacole Gallagher
Ofelia Garcia
Matthew and Marie Garfield
Kathleen Garza
Marianne Geiger
Mary Geisz and Keith Pryor
Leslie Gerhart
Eric Gerstel
Mark Gibbons
Ms. Sandra Gibson
Blossom Gica
Alvin Gilens
Timothy Gilboy
Alvin Gilens
Connie Giordano
Mary Kate Glenn
Vince Goffredo
Daphne Goldman
Mary Goldman
Julia Goldstein
Mr. and Mrs. Bernard D. Goodman
Juanita Goodman-Gathright
Marsha Gordon
Bob and Jan Goren

Thank You to Our Supporters

Marylyn Goutmann
Mary Graham
Rick and Sharon Graham
Beth Grandizio
W. John Grant
Anna and Jerry Green
Cheryl and Jon Green
Nate Green
Alan and Sara-Ellen Greenberg
Ms. Grace E. Grillet
Sara Grimes-Donohue
Barbara Gross
Jonathan Greene
Adele Aron Greenspun
Paul and Terry Guerin
David and Myra Gutin
Bill and Debbie Haggett
Charlie Haines
Sondra Haley
Carly Hall
Emma Halpert
Eileen Hannan
Ms. Tonda Hannum DiPasquale
Mary Kate Harkins
Christiana Harkulich
Judy and Palmer Hartl
Karen Hassett
Ann Hausmann
Catherine Hawkes

Beverly Hayden
Jacquelyn Heiart
Joan and Richard Heller
Irene Hempstead
Susan Hendricks
Angela and Michael Hennessey
Jessica Hilburn-Holmes
Kylie Hill
Mike Hinkson
Larry Hirschhorn
Jeanne HiSey
Mary Beth Hoban
Amy Hodgson
Michel Hoessly
Cindy Hoffman
Morton and Lois Joy Hoffman
Amy Hoffmaster
Toby Hogan
Dr. and Mrs. Bentley and
Clara Hollander
Marie Horchler
Trevor Horst
Paul Howard
Kelsey Howarth
Linda Howell
Lauren Hughes
Pamela Hunsberger
Charles and Elaine Huntoon
Dave F. Huting

Gwynne L. Isaacs
Joan Ivanoski
Rhonda Jackson
Kathy Jacoby
John W. James
Barbara Jamison
Drs. Anthony and Estelle Chun
Scott Jeffers
Marilyn Johnson
Sharon Jones
Susan Jones
Lauren Kahn
Philip* and Marge Kalodner
Kim Kane
Dorothy Kaplan
Ellen Kaplan
Karen Kaplan^
Dorothy Karhnak
Mark Karlen
Nancy Kassam-Adams
Bruce and Carol Katcher
Michele Kaufman
Mr. Rosamond Kay
Jennifer Kay
Thomas Keary
Katharine Kelmelis
Frances and Paul Kende
Nancy Kengeter
Kathryn Kenney



Thank You to Our Supporters

Susan Kershaw
Toni and Herbert Kestenbaum
Bob Kestler
Robert and Susan Kettell
Julia Kharlip
Brendan Killackey
Maureen Kilroy
Cheryl and John Kirby
Helene and Ron Klimberg
Rita Klinger
Barbara Klock
Jerry and Deena Koffler
Ellen Kopeland
Amy-Jo and Marty Koser
Arthur Kover
Stanley Krall
Garry A. Kramer
Shira Kramer
Cheryl Krause
Barbara Kreider
Heather Kreismer
Cyndy Krieger
Robin Kujan
Alan Kutner
Daniel Lai
Jon Landau
John Landreau and
Sherry Grasmuck
Andree Laney
Martin and Hannah Laufé
Sharon Lawrence
Gretchen Lea

Martha Leach
Victoria Leahy
Elena Legg
Jennifer Lentz
Sara Leonard
Maria Lerman
Ruth Lesser
Todd Levin
Ben Levine
Michael L. Levitan
Rafael Levites
Wendy Liebling
Kathy Linaugh
Robert Linblad
Daniel Linehan
Nathan Link
Kathleen and Daniel Lipinski
Victoria Lipoff
Kathleen Locker
Debbie Long
Richard Lopez
Jane Issacs Lowe
Timothy Lowry
Karen Lubert
Larry and Nancy Ludgus
Edward Lundy and Debra Reiff
Robert and Patricia Lynam
Terri Lynch
Susan and James Lytle
Irene Mack
Mary Lynn MacKenzie
Kathleen Mahan

Ann Malcolm
Tina Manco
Jamie Manning
The Manitone Family
Krista Mar
Ms. Bonnie Maradonna
Bob and Sue Ann* Marburg
Nicole Martz
Thomas Massimiani
Barbara Matteucci
William Maurer
Bill Mayes
Amy McCann
Maura McCleneon
Maria McCormick
Bernadette M.
Marie McCullough
Melissa McDaniels
Vincent McDevitt
William and Tina McDonnell
John and Wendy McGeehan
Jim McGorman
Kathleen McGrann
Anne McKenna
Max McKenna
Judith McLaughlin
Jane McLaughlin
Terrence McMahan
John McNulty
Michael McShane
Marianne Mellinger
Wendi Meltzer



 123 Chestnut Street
Entrance on 2nd
Philadelphia
WWW.PLOUGHSTARS.COM

The Plough & The Stars
Before or After the Show
Arden guests receive
10% off their meal!

Thank You to Our Supporters

Mark Mendenhall
Robert Mercadante
Vincent Meredith
Anne Michel
Bruce Miller
Barbara Miller
Diana Miller
Steve and Joyce Miller
Lina Minicucci
Elisa and Dom Minni
Catherine Minnis
Kristin Minot
Jack Miszencin
Donna Mitchell
Nazinin Moghbeli
Philip Monagan
Jackie Morrill and Mike Donahue
Ann Mintz and Clifford Wagner
Tina Morrison, In Honor of Flynn
and his senior year
Peggy Morrison
Brad Moss and Laurie Gottlieb,
In Honor of Harvey Swedloff
David N. and Laurel S. Mosteller
Phanerrica Muhammad
Susan Muller
Theodore and Theresa Munz
John Murga
Peter Murphy
Dr. Susanna Nazarian
Scott Neifield
Claiborne Newlin
Donna Nini
Sylvia Nisenbaum
Raymond Nolen
Delinda Norrid
Jeannette and Daniel Norris
Judith O'Dell
Laurie Ohayon
Jonathan Offenkrantz and
Deborah Gordon
Hannah Olanoff
Brenda J. Oliphant
Jeanne Omans
Eric and Julie Orts
Audrey Owen
Hedra Packman
Allison Parks
Steven Peitzman
Ronee Penoi
Jane G. Pepper
Lisa Perronne
Jacqueline Perry
Timothy Persico
Jill Perugini
Mr. Scott Peterman
Suzanne Petruzell and Bob Pisani
Bill Pfeifer
Melissa Picknell
Lucille Pilling

Marcia Pizer
Ron Plawecki
John and Victoria Podolski
Theodore Politis
Al Politowski
Audrey Porter
Judy Pote
Lawrence Powell
Dr. Tom and Candace Pratt
Cathy Pregmon
Frank and Patricia Preston
Mike Pulsifer
Diana Quattrone
Justin Quigley
Ms. Laura Raines
John Ramsaur
Brian N. Rath
Catharine Randall
Timothy and Joyce Ratner
Abi and Craig Reed
Kenneth Richman
Len Rieser
Bradford Riley
Richard Ritunnano
Angela Roach
Mary Ann Robinson
Matthew Robinson
Corinn Rocker
Ellen and Ralph Rosen
Elyn Rosenfeld
Adam Rosenthal
Julia Rosenzweig
Carole Roskoph
Libby Rosoff and Murray Dubin
Richard Ross
Ashley Ross
Anthony Rostain
Clara Roth
Enid Krasner and Alan
Rothenberg
Lynn and Michael Rothman
Cynthia Rowe
Marie Ruddell
Bernard and Barbara Ruegauer
Andy Rusnak
Amy and Mitch Russell
Stephen and Linda Russell
John Ryan
E. Ruth Sachs
Patricia Sack
Dawn Salmon
Cynthia Samuels
Mike and Mary Kay Sansone
Roberta Sampson
Carlos Santos
Lee Sargrad
Lane Savadove
Jean Sbarge
Dori Clarke
Karyn L. Scher

Titia Scherpber
Anna Schifrin
Amber Schlesman
Les Schlessinger
Robert Schlosser
Bobbie and Al Schmidt
Peter Schmitz
Ms. Adeline Schultz
Ms. Theresa Scott
Gail Scott
Patricia Scott Hobbs
Hideko Secrest
Annilee Seitchick
Julie Senko
Rich Sensenbrenner
William Shafer
Karen Shakoske
Kathy and Peter Shea
Tripp Shenton
Shruti Shetty
Vera Shevchenko
Lisa Shiota
William Shoff
Charlotte Sibley
Robin Siegel
Stephanie Sigal
Don Silver
Judith Silverman
Mary L. Silverstein*
Annette Simiriglia
Wystan Simons
Joseph Sipala
Judith Skillings
Carleene and David Slowik
Catharine Slusar
Dennis Raymond Smeal
Bruce and Penny Smith
Carol Smith
Lillian Smith
Taylor Smith
Stephanie Snyder
Paula and Mark Solomon
Vicki Solut
Margaret R. Spencer
Usha Srinivasan
Catherine Staples
Elizabeth Sarrantino
Susan Steigman~
Elliot Sterenfeld
Steve and Judy Stern
Nicole Stevens
Steve and Judy Stern
Bonnie Stone
Louise and David Strawbridge
Elan Strominger
Andrew Swank
David Swartz
Dr. Dolores Szymanski
Matthew Taberski
Charles F. Tarr

Look around. Want to reach this audience? Advertise in our upcoming stagebill.

For more information on custom packages, please contact Michel at mmanzo@manzomediagroup.com
or Kim at krichards@manzomediagroup.com

Thank You to Our Supporters

Rick Terkowski
Kelly Thomas
Katie Thomas
Mary Jane Thompson
William Thompson
Ruth Thornton
Edward and MaryAnn Tierney
Louis Tillery
James Timberlake and Meg Rodgers
The Tobias Family
Anna Coxe Toogood
Ann Trail
Andy Travaglia
Elaina Tully
Victoria Turlik
Dagny Veitch
David Velazquez
Valeria Vasilevski
Cynthia L.Vena
Anthony Vitullo Jr.
Deborah Volkmer
Harriet Waanders
Ian Wachstein and
Michele Zeldner
Joy Wadleigh and Richard Hudson
Emily and Charles Wagner
Lorimar Wagner
John Walber
Susan Walbransku
Laura Waldrop
Paula and Lawrence Wallach
Tuesday Wallington Grimes

Sean Walsh
Jane Waltman
Jennifer Ware
Tom and Beth Warms
Deanne Warner
Robin Warsaw
Ellen Watson
Barbara Weidner
Harri Weinberg
Howard Weiner
Joan Weiner
William Weir
Amanda Weisel
Lenore Weissberg
Shannon Welsh
Ellen Welson
Suzanne L. Weston
Cynthia Weyand
Patrick J. and Gina Whalen
Marsha Wheeler
Gwen White
Robert C. Wickline
Thelma Wigod
Joanne Wigod
Annamarie Wileczek
Gwendolyn Wiley
Carol A. Williams
Michelle Williams
Dawn Williams
Elizabeth Williams
Bob Willoughby
Ann Wilson

Jim Wilson
Lydia and Gary Winderman
Kim Winnick
Jane Winski
Marcia Witlin-Basickes
Arnold Wolf and Fern Tablin
Stephen Wood
Keither Yaller
Albert Yan
Kuna Yankell
Linda Yarlot
Lee Yeash
Barbara Yorke
Kristin Yorke
Anna Young
Kathy Zager
Hilary Zankel
Mary Ziegler

* Denotes a deceased supporter
+ Denotes a gift of goods or services
^ Includes a matching gift
~Includes a monthly gift
This list represents gifts made
through May 7, 2026



RACE
street
Café

Old City's Neighborhood Bar
Great Beer - Great Food - Great People

Thank You to Our Supporters

Gifts in Memory Of...

ALICE AND MARIE

Anonymous

MARIE ADAIR

David and Myra Gutin

ISAAC AMADOR

Ilene and Coleman Poses

JOSEPH V. AMBROSE

Anonymous

MICHAEL BAILIN

Sally Bailin

TOM BEAM

Carol Beam

SHEILA CALLINAN

Anonymous

ELIZABETH P. CORNMAN

Anonymous

ERNEST CUFF

Ellen Deacon

MARJORIE DICKEY

Rhonda Dickey

DONALD F. DUCLOW

Niels Johnson and Christina Maffa-Johnson

MARCELLA E.

Bernadette M.

STEPHEN J. GARLAND

Katherine Davies and The Garland Family

DONALD GREEN

Scott and Lynda Glading

Marianne Green

JAMES J. HANEY III MD

Ben and Patricia Haney

BARBARA HAWTHORNE

Anonymous

LUCKY HERTFELDER AND SHARON CLAUSON

Heidi and Trudi Hertfelder

MOM, EXTROADINAIRE

Bernadette Koller

JOHN KOSCELNIAK

Valerie Koscelnik

SHEILA KUTNER

Dr. Beverly Emanuel

Alan Kutner

WALLY LOEB

Charles and Elaine Huntoon

HOWARD MAGEN

Cirel Magen

MARGARET MAGUIRE

Charles Rose

LEE MARKS

David and Eileen Abels

Sheryl and Allen Bar

John Fuchs-Chesney

Robert Craig

Stephen Craig Family

Greenberg Traurig- Northern Virginia

Mr. and Mrs. Bernard D. Goodman

Tim and Renee Jessell

Lisa and Perry Kahn

Rachel and Will Kipnes

Joanna Kipnes and Family

Scott Neifeld

Peach

Suzanne Seger

Leonard and Nancie Velick

Jamaine Yarborough

TOM MCCARTHY

Robert Craig

Carol DeLuca

Nancy and Bob Elfant

Karen Hassett

Carol Kelley

Jamie Nikithser

Bob Perdick and Lenny Smith

Jill Perugini

Vera Shevchenko

Dawn William

WESLEY MONTGOMERY AND SUE WINGE

Anne Halkedis

MIRIAM CHERYL NORRIS

Jeannette and Daniel Norris

KRISTIN OSGOOD LAMELAS

Diane Hlywiak

GEORGE AND DOLORES OTTINGER

Stephen and Kathy Thompson

CLIFFORD PEARLMAN

Lynn Marks

RICHARD RAGONESI

Lynn and Michael Rothman

RICHARD REPETTO

Dan Rothermel and Michael Hairston

ANNIE RICHARDSON

Anonymous

MAITLON RUSSELL

Linda McAleer

ANURADHA SEEKAY

Aneira Puttaswamy

GEORGE R. SZYMANSKI, ESQ.

Dr. Dolores Szymanski

NANCY STEWART LITWAK

Miranda Goot

GERI TALLONE

Scott and Lynda Glading

PETER WALDRON

Rich and Lolly O'Brien

BETTY E. WATERS

Anonymous

CASEY ZEFF

Eileen Heisman and Marty Tuzman

Gifts In Honor Of...

Diane Alessi's Birthday

Toni Bonnette

Janet D'Alessandro

Joyce George

Renee George Klucznik

Egan and Ellen Yaffe

APA Showcase

Laura Carey

Gifts To Named Funds...

NAMED SEATS THIS SEASON

Anonymous

George Ahern

Jill Fisch and John Gassenheimer

Blossom Gica

Joan Tishgart

ANDREA MENGEL FUND

Doug and Kristin Berman

Derick Dreher

Independence Foundation

Susan Sherman

ANN B. MCNAMEE

FAMILY THEATRE FUND

Dennis and Louise Buckley

Dennis Rodkin

Melissa Rodkin

Robert and Joan McLaughlin

THE DR. MINDY GOLDBERG ROSE INTERNSHIP FUND

Dinah Abelman, In Honor of Charlie Rose

Bernice Andrews

Equitable/ AXA Foundation

Charles Rose

Heidi and Mitchel Rubin,

In Honor of Jack Gorny's Birthday

THE BERNARD AND CAMILLE ROSENBERG FAMILY THEATRE FUND

Bernard and Camille Rosenberg

Board and Committee Members

Board of Directors

Michael A. Donato, *President*
Rayenne A. Chen, *Vice President*
Dr. Valerie Harrison,
Vice President
Michael S. MacFarland,
Treasurer
Richard L. Maimon, *Secretary*
Dr. Lawyer Chapman
Kelly Colarelli
Anne Cook
Robert Elfant
Nancy Elfant
Elizabeth A. Fernández-Viña
Elizabeth H. Gemmill
Jennifer Harmelin
Richard Harris
Valerie I. Harrison
Ann Marie Horner
Holly Kinser
Dr. Saifuddin T. Mama
Amy L. Murphy
Terrence J. Nolen
Brian Pinheiro
Hon. Rosalyn K. Robinson
Charles H. Rose
Camille Rosenberg
Monica Rosenthal
Genieve Shields
Lee van de Velde
Steve Wolfson
Diane Dalto Woosnam
Ellen Yin

Board Executive Committee

Michael Donato, *Chair*
Michael MacFarland
Rayenne A. Chen
Robert Elfant
Jennifer Harmelin
Dr. Valerie Harrison
Holly Kinser
Richard L. Maimon
Genieve Shields
Lee van de Velde

Finance Committee

Michael MacFarland, *Chair*
Juan De León Domenech
Elizabeth Gemmill
Ann Marie Horner
Dan Hilferty
Harvey Swedloff
Katherine Tracy

Board Development Committee

Rayenne Chen, *Chair*
Valerie Harrison, *Chair*
Michael Donato
Robert Elfant
Holly Kinser
Saifuddin T. Mama

Board Development Committee (cont.)

Lee van de Velde
Diane Dalto Woosnam

Personnel Committee

Michael Donato
Elizabeth H. Gemmill
Richard Harris
Michael S. MacFarland
Charles H. Rose

Engagement Committee

Jennifer Harmelin, *Chair*
Genieve Shields, *Chair*
Lee van de Velde
Anne Cook
Elizabeth Fernández-Viña
Camille Rosenberg
Hope Yursa

Facilities Committee

Richard L. Maimon, *Chair*
Mike Green
James Kronzer
John J. McCawley
H. Hetherington Smith
Chris van de Velde

Equity, Diversity, and Inclusion (EDI)

Rayenne Chen
Anne Cook
Joy L. De Jesús
Robert Elfant
Kash Goins
Richard Harris
Dr. Valerie Harrison
Zuhairah McGill
Amy L. Murphy
Bi Jean Ngo
Terrence J. Nolen
Hon. Judge Rosalyn
Robinson
Clayton Tejada
Orelí Uzdavinis

Young Friends Committee

Chelsea Beytas
Kathleen Johnson
Alexa Josaphouitch
Meredith McGovern
Jenny Morrison
Mandie Spindler
Diana Zalewski



ARDEN THEATER
GUESTS

RECEIVE 10%
OFF
FOOD
& DRINK

Khyber Pass Pub

Staff

Artistic	Producing Artistic Director.....	Terrence J. Nolen
	Associate Artistic Director.....	Jonathan Silver
	Artistic Assistant.....	Nick Hatcher
	Commissioned Playwrights.....	Kash Goins, Robi Hager Rogelio Martinez, Iraisia Ann Reilly, James Ijames
Administrative Management	Managing Director.....	Amy L. Murphy
	General Manager.....	Clayton Tejada
	Business Manager.....	Paola Cruz
	Audience Services Manager.....	Tanner Richardett
	Facilities and Office Manager.....	Larry Brooks
Arden Professional Apprentices.....	Sara Alvidrez, Hardik Gupta, JT Hawkes Amelia Kovach, Madison Luckey, Fable Rowell	
Marketing	Director of Marketing and Communications.....	Mike Hogue
	Communications Manager.....	Aseal Saed
	Marketing Manager.....	Alexa Perillo
	Marketing and Group Sales Associate.....	TJ Harris
	Archivist.....	Emily Lathers
	The Sue Wigne Intern of Villanova.....	Gianna Lauria
Publicist.....	En Route Marketing	
Development	Director of Development.....	Jessica Abel
	Development Coordinator.....	Tylar Benedetto
	Manager of Institutional Giving.....	Gwyn Garrison
	Manager of Individual Giving.....	Orelí B. Uzdavinis
Education	Director of Education.....	Lauren Diesch
	Education Outreach Manager.....	Josh Thorps
	Arden Drama School Manager.....	Elise D'Avella
	Education Associate.....	Francine Odri
	Teaching Artists.....	TJ Harris, Jessica Money, Julianna Babb, Cindy Paul, Andrea Rose Cardoni, Zoe Hollander, Katherine Perry, Eliana Pinckney, Gina Giachero, Jake Collins, Jordan Hunter-Fidalgo, Lexi Schreiber, William Daniels, Lydia Hassell, Abby Weissman, Leah Cohen, Campbell O'Hare, Ryan Touhey, Lize Meisenzahl, Curtis Harris, MK Prophet, Gabe Moses, Kevin Muchetti, Lauren Krigel, Maddy Gillespie, Aurelien Eulert, Evan Hilborn, Jack Krukiel, Ryan Colbert, Charlie Barney, Christen Mandracchia
	Box Office Manager.....	Jason Blacketer
	Assistant Box Office Manager.....	Cam Adams
House Manager.....	Skyler Gonzalez	
Front of House	Front of House Associate.....	Catey Midla
	Front of House Lead.....	Emily Hernandez
	Front of House Assistants.....	Aaron Szabo, Adiah Hicks, Becky Fleckner, Chelsey Gaskins, Dean Cousineau, Em Brandon, Glynnis Nadel, Jael Hicks, Jenny Glickman, KC Casey, Laura Duffy, Leanna Dankel-Paylor, Lillian Redding, Liv Hershey, Mads Klemm, Margaux Cattelona, Morgan McNulty, Victoria Silva, Zoe Hollander
	Production Manager.....	Kate Nelson
	Technical Director.....	Evan Lewis
	Assistant Technical Director.....	John Winter
Production	Electrics Supervisor.....	Martin Stutzman
	Assistant Lighting Designer.....	Ethan Paone
	Spot Light Operator.....	Emily Muirhead, Glynnis Nadel
	Sound Supervisor.....	John Kolbinski
	Costume Shop Manager.....	Bridget Brennan
	Assistant Costume Shop Manager.....	Mae Merkle
	Wardrobe Supervisor.....	Ryn Smith
	Properties Supervisor.....	Kelly McLaughlan
	Charge Scenic Artist.....	Brit Bannon
	Production Assistant.....	Ta'Liyah Thomas
	Assistant to the Stage Manager.....	JT Hawkes, Sara Alvidrez
	Audio Engineer.....	John Kolbinski
	Company Safety Managers.....	Clayton Tejada, Jonathan Silver
	Programmer.....	Nick Wacksman

CREATIVE REAL ESTATE FOR CREATIVE PEOPLE



The CCSJ Team is proud to continue our *Support the Arts Initiative*, donating to local performing arts organizations for every closing. Whether you're on-stage, behind the scenes, or in the audience, choose the REALTOR[®]s who support our arts community.



JAMES SUGG
REALTOR[®]
267.303.2827
sugg@ewrhomes.com



BENJAMIN CAMP
REALTOR[®] & CCSJ Team Leader
610.220.8550
ben@ewrhomes.com

THESTELLARCHOICE.COM | 215.893.9920
2000 PINE ST, PHILADELPHIA, PA 19103

Elfant &
Wissahickon
- REALTORS[®] -