

Arden Children's Theatre Presents

THE Stinky Cheese Man

and Other Fairly Stupid Tales

Based on the book
by Jon Scieszka
and Lane Smith
Adapted by John Glore
Directed by
Steve Pacek

Arden
THEATRE CO

APR 8- MAY 31
On the Arcadia Stage

Honorary Producers:
Anne Cook and Russ Troyer

ANNOUNCING ONE OF OUR ARDEN CHILDREN'S THEATRE SHOWS **2026/27**

The Wonderful Wizard of Oz

By L. Frank Baum

Adapted and Directed by Whit McLaughlin

Join Dorothy and your favorite Oz characters, the Scarecrow, Tin Woodman, Cowardly Lion, and more on an adventure. Experience this inventive and imaginative twister of a tale with the whole family, where courage and friendship lead the way. Adapted and directed by Whit McLaughlin, whose work includes Arden Children's Theatre favorites like *Charlotte's Web*, *A Year with Frog and Toad*, and *Peter Pan*.

PLUS 1 MORE SHOW TO BE ANNOUNCED!

BUY BOTH AND SAVE TODAY!

Start your next adventure with *The Wonderful Wizard of Oz*—and experience even more with the Family Fun Pack.

TWO SHOWS. ONE EASY PLAN & PRICE

Enjoy two Children's Theatre shows—**two planned outings for you at over HALF OFF regular prices.**

FLEXIBILITY

Priority seating and flexible free date exchanges make it easy to choose what works best for you.

MAKE A DAY OF IT

Everything you need for a great day—discounted parking, local dining discounts, and more.

EXPERIENCE MORE

Join in additional activities, experiences, and opportunities that extend the story beyond the stage.



Scan for more information:



Or go to ardentheatre.org

Top: Ensemble of *The Hobbit*;
Middle: Campbell O'Hare and Jo Vito Ramirez in *Peter Pan*;
Bottom: Jayson Brown, Mersha Wambua, Daniel Burgess in *A Wrinkle in Time*



WELCOME LETTER.

(This is where I get to welcome you to the Arden)

We hope you like *The Stinky Cheese Man and Other Fairly Stupid Tales*.

(This is the name of our play and the book it's based on.
If you like the book, I hope you like our play. If you've never
read the book, you should. Go to the library and check it out.
It's really good.)

Enjoy the show.

(Clap. Cheer. Maybe even scream a little. But enjoy it.
We made this play especially for you.)

Best,

A handwritten signature in black ink that reads "Terrence J. Nolen".

Terrence J. Nolen

Producing Artistic Director

(This is my title. It means I get to help choose the art we produce here -
the plays we make. But I didn't direct this play. The director is a guy
named Steve Pacek. You can see his picture in a few pages.)

tnolen@ardentheatre.org

(Next year we will be producing a brand new version of
The Wonderful Wizard of Oz! This play is written by Whit McLaughlin,
who has done A LOT of Arden Children's Theatre shows. Bring your family
to come see it! If you have ideas for other plays that we should do in
the future, please let me know!)

A Message from our Honorary Producers



We are delighted to support *The Stinky Cheese Man and Other Fairly Stupid Tales*, and to celebrate the joy and imagination that live theatre brings to young audiences and families. Russ and I have been longtime Arden supporters, especially of Arden's youth programming. We believe that introducing young people to the arts is an essential investment in their creativity, curiosity, and bright future. Arden Children's Theatre is an

experience where stories come alive, imagination runs wild, and children are the true star of the show.

This play turns familiar fairy tales upside down with just the right amount of irreverent humor and delightful nonsense. Stories like this remind us that creativity thrives when rules are bent, expectations are challenged, and curiosity is encouraged. It is an honor to support an organization that makes theatre a place of wonder for all ages.

Thank you for joining us — enjoy the show!

Anne Cook and Russ Troyer

Accessibility Services



Accessible Seating & Seating Requests

Removeable seats for wheelchairs & Accommodations for comfort, mobility, & hearing or vision needs



Smart Caption Glasses (SCG)

Wearable, customizable closed captioning glasses. Available starting Saturday, April 25, 2026.



Assistive Listening Devices (ALDs)

Amplification of all onstage sounds. Ask Box Office to borrow. Available with headphones or a t-coil neck loop.



Large Print Programs

Enlarged-text printed programs for low-vision patrons. Ask Box Office to borrow.



KultureCity Sensory Tools

All Arden staff are Sensory-Friendly trained. Quiet Area, Social Stories, and Fidgeting Tools available.



Shadow American Sign Language (ASL) Interpretation

Live ASL interpretation shadowing the action of the show. Friday, May 15, 2026 at 10:30 AM
Saturday, May 16, 2026 at 4:00 PM



Service Dogs

We welcome patrons with Service Dogs to attend our performances.

We invite you to visit ardentheatre.org/plan-your-visit/accessibility or more details about our services and offerings.

inspiring
A LIFE OF BEAUTY



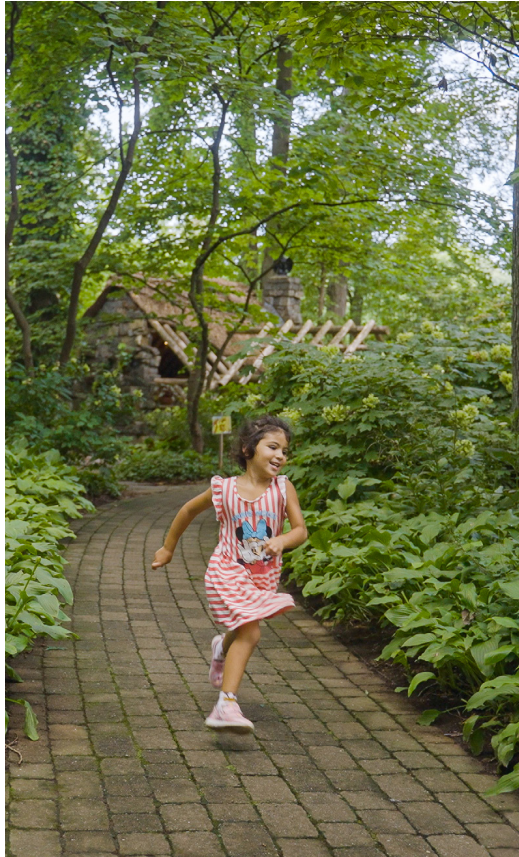
Wood-Mode designers bring your vision to life through creativity and years of product and technical training. For more than 75 years, Wood-Mode has been developing products and training that inspire our designers, so they can inspire you.

Wood-Mode[®]
FINE CUSTOM CABINETRY

Visit Wood-Mode.com to get inspired, explore and learn more.

Wall & Walsh, Inc.
(610) 789-8530
wood-mode.com

8320 West Chester Pike
Upper Darby, PA 19082



Becca Mathias



Bob Leitch

Explore. Imagine. Play. Learn.

SPRING FLING | ENCHANTED WOODS CHILDREN'S GARDEN
TERRIFIC TUESDAYS | STORYTIME | TRUCK & TRACTOR DAY

Enjoy kid-friendly activities, wander the garden, and learn about history while having fun. Learn more at winterthur.org/Family and reserve today!



WINTERTHUR
— 75 YEARS —
MUSEUM, GARDEN & LIBRARY



1776 - 2026

Tours and events all year long.

800.448.3883 • winterthur.org

Winterthur is nestled in the scenic Brandywine Valley.

A Note

From the Director

Steve Paek

Like a funhouse mirror held up to both fairy tales and the world around us, what you'll see may be warped—but within that distortion is truth, humor, and a reminder of our boundless capacity to create. So embrace the unexpected and imagine what's possible beyond the edges of what you know. . . .

Because creativity does not thrive in perfect order. It sparks to life when expectations are broken, when the script is tossed aside and we dare to imagine something different. The characters in this play do exactly that: they interrupt, derail, and recreate their own stories. In doing so, they remind us that thinking outside the box isn't just playful—it's powerful. And using your imagination becomes more than entertainment; it becomes resilience.

is continually changing, there are completely blank pages, characters exit from their own illustrations, things are printed **upside down**, the table of contents falls apart and there is not a traditional "happily ever after" in sight. Their irreverent book reinvents ages-old fairy tales and refuses to follow the rules in any way, shape or form. What was once orderly and understood now becomes subverted and unknown. And in this moment—when the world itself can feel upside down or "through the looking glass," these "fairly stupid tales" begin to feel surprisingly wise.

"A long time ago, people used to tell magical stories of wonder and enchantment. Seriously. They were called Fairy Tales. But we're not going to tell you those stories." -Jack, the Narrator

Jon Scieszka and Lane Smith's beloved book, *The Stinky Cheese Man and Other Fairly Stupid Tales* is filled with a beautifully joyful chaos. The size and color of the fonts



ARDEN CHILDREN'S THEATRE PRESENTS

THE STINKY CHEESE MAN AND OTHER FAIRLY STUPID TALES

by JON SCIESZKA and LANE SMITH

Adapted by JOHN GLORE

Scenic Designer
CHRIS HAIG

Costume Designer
ASAKI KURUMA

Lighting Designer
ALYSSANDRA DOCHERTY+

Assistant Lighting Designer
ETHAN PAONE

Sound Designer
AJ BLOOMFIELD

Assistant Director
KRISTIN FINGER

Stage Manager
ALEC E. FERRELL*

Directed by
STEVE PACEK

Honorary Producers:
Anne Cook and Russ Troyer

Produced by Specail Arrangement with Playscripts, Inc.
(www.playscripts.com)

THE VIDEOTAPING OR MAKING OF ELECTRONIC OR OTHER AUDIO AND/OR VISUAL RECORDINGS OF THIS PRODUCT AND DISTRIBUTING RECORDINGS OR STREAMS IN ANY MEDIUM, INCLUDING THE INTERNET, IS STRICTLY PROHIBITED. A VIOLATION OF THE AUTHOR(S)'S RIGHTS AND ACTIONABLE UNDER UNITED STATES COPYRIGHT LAW. FOR MORE INFORMATION



Arden Theatre Company receives state arts funding support through a grant from the Pennsylvania Council on the Arts, a state agency funded by the Commonwealth of Pennsylvania.



+ Member of United Scenic Artists
Local USA 829

* Member of Actors' Equity Association,
the Union of Professional Actors and
Stage Managers in the U.S.



^ The director is a member of the Society
of Stage Directors and Choreographers,
Inc., an independent national labor union.

Cast of Characters

Ensemble..... Taysha Marie Canales*
 Ensemble..... Robi Hager*
 Ensemble..... Lee Minora*
 Ensemble..... Matteo Scammell*
 Ensemble..... Leah Walton*

UNDERSTUDIES

Rachel Grodek (Ensemble), Em Harnett (Ensemble), Jeremy Mitchell (Ensemble),
 Niamh Sherlock (Ensemble), Kaitlyn Zion (Ensemble)



Arden Theatre Company is a professional company employing members of Actors' Equity Association.
 *Member of Actors' Equity Association, the Union of Professional Actors and Stage Managers in the United States.

Please check houseboards for any program changes.

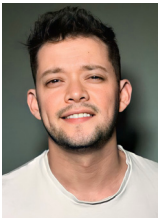
Taking pictures and/or making visual or sound recordings is expressly forbidden.

Actors' Equity Association (AEA), founded in 1913, represents more than 45,000 actors and stage managers in the United States.

Equity seeks to advance, promote and foster the art of live theatre as an essential component of our society. Equity negotiates wages and working conditions, providing a wide range of benefits, including health and pension plans. AEA is a member of the AFL-CIO, and is affiliated with FIA, an international organization of performing arts unions. www.actorsequity.org



TAYSHA MARIE CANALES Arden: *Good Bones, King Hedley II, A Streetcar Named Desire, No Child...* (2021 Filmed Production), *A Midsummer Night's Dream, La Bête, The Jungle Book, Sideways Stories from Wayside School*. Regional: *The Snow Queen, The Comeuppance, Fat Ham* (2021 filmed World Premiere), *Dance Nation, Romeo and Juliet, Passage, Passing Strange, Blood Wedding, When the Rain Stops Falling, An Octoroon, The Hard Problem* (The Wilma Theater); *Hamlet, Cymbeline, The Merry Wives of Windsor, Much Ado About Nothing* (Pennsylvania Shakespeare Festival); *All My Mothers Dream In Spanish* (Azuka Theatre); *Shakespeare in Love, All My Sons* (People's Light). Taysha is the 2018 F. Otto Haas Emerging Philadelphia Theater Artist Recipient and a three-time Barrymore Award nominee. She is a founding member of the Wilma Theater's resident acting company, the Hot House. BFA in Acting from Arcadia University. Much love to my family, especially to my two AMDs, Olivia and Jordan.
tayshamariecanales.com



ROBI HAGER is an actor, singer and composer and guncle to his two amazing nephews Milo and Kian! "ay ay ay!" Arden: *Assassins, Next to Normal, Parade, Ragtime, Robi Hager: So Far, Sideways Stories of Wayside School* and *Treasure Island*. He appeared on Broadway in *Spring Awakening, How to Succeed in Business Without Really Trying, Bye Bye Birdie* and *Doctor Zhivago*. His musical *Siluetas* received a world premiere production in Philadelphia June of 2024 produced by Power Street Theatre. *Siluetas* received a total of seven 2024 Barrymore Award nominations including Best Original Score. Robi is the composer of LGBTQ musical *Basic Witches* for which he received a 2018 Barrymore Award nomination for best original score. He is also the creator and composer of new Mexican musical *Little Duende*. Robi is a commissioned artist at the Arden and is writing a new children's musical based on the legends of King Arthur.
robihager.com



LEE MINORA is happy to be returning to the Arden where she was last seen in *Peter Pan*. Lee is a writer, performer and theater maker living in Philadelphia. Her solo shows, *Baby Everything, White Feminist* and *Cheeks* have been presented at FringeArts, Ars Nova, The Wilma Theater, Edinburgh Fringe, London's Sick of the Fringe, Philly Fringe, Z-Space, Good Good Comedy and UMS's No Safety Net. She is the co-writer and performer of *Nosejob* which was presented in the curated Fringe in 2024. As a creator/performer she has worked with The Berserker Residents, Theater in Quarantine (New York Times Critics Pick) and Lightning Rod Special (NYT's Critics Pick '23 and '19, Best of Theater '19). As an actor, she's been seen in over two dozen productions. Some favorites include Dorine in *Tartuffe*, Suzette in *Don't Dress for Dinner*, and at the news desk of *This is the Week That Is*. She is a Barrymore nominee, a Haas Finalist and the two-time recipient of The Jilline Ringle Performance Grant. Love to my family and Matteo.



MATTEO SCAMMELL Arden: *RENT*, *Holy Grail of Memphis*, *The BFG* (*Big Friendly Giant*), *Assassins*, *Charlotte's Web*, *A Streetcar Named Desire*, *The Legend of Georgia McBride*, *Cinderella*, *Beauty and the Beast*, *Hans Brinker and the Silver Skates*. Regional: *The Good Person of Setzuana*, *Our Class*, *Blood Wedding*, *Romeo and Juliet*, *The Cherry Orchard*, *Fairview* (The Wilma Theater); *Smoke, Really*, *Buzzer*, *Wolf Play* (Theatre Exile); *The Comedy of Errors*, *The Last Match* (Lantern Theater Company); *The Hairy Ape* (EgoPo Classic Theater); *Detroit*, *Hand to God*, *Sweat*, *Empathitrax*, *Caesar* (Philadelphia Theatre Company); *27*, *Prom*, *The Adults*, *O Monsters*, *Hello Blackout!* (New Paradise Laboratories); *Million Dollar Quartet*, *Other Desert Cities*, *Escape to Margaritaville* (Walnut Street Theatre); Film/Television: *Scabs*, *I Am That*, *Traffickers* (Amazon); Education: BFA, University of the Arts. Awards: Barrymore for Actor in a Lead Role; 2020 Independence Foundation Recipient. Love to Lee and our families!



LEAH WALTON Arden: *The Big Friendly Giant* (*BFG*), *Indecent* (Barrymore Nomination Best Leading Performer in a Play), *Peter Pan*, *Charlotte's Web*, *The Stinky Cheese Man and Other Fairly Stupid Tales* (Barrymore Nomination Best Supporting Actress in a Musical). Off-Broadway: *Lapsburgh Layover* (Ars Nova). Regional: *Laughter on the 23rd Floor* (Walnut Street Theatre); *Brighton Beach Memoirs* (Delaware Theatre Company); *The Wolves* (Philadelphia Theatre Company); *2.5 Minute Ride* (Theatre Horizon); *The Last Parade* (InterAct); *Bunny Bunny* (1812 Productions); *Spring Awakening* (Relic Theatre); Barrymore Award 2015: Best Supporting Actress in a Musical (*Field Hockey Hot*, 11th Hour Theatre Company). Training: National Theatre Institute, Moscow Art Theatre, M.F.A. Temple University. Many thanks to the Arden family! leah-walton.com

JOHN GLORE (Playwright) Associate Artistic Director of South Coast Repertory, is an award-winning playwright whose produced plays include *ON THE JUMP*, *THE COMPANY OF HEAVEN*, *CITY SKY* (scenario for a dance piece), *WIND OF A THOUSAND TALES*, *FOLKTALES TOO*, *RHUBARB JAM*, *THE DAY AFTER EVERMORE*, and an adaptation of *THE STINKY CHEESE MAN AND OTHER FAIRLY STUPID TALES*. With the performance trio "Culture Clash" he has co-authored adaptations of two plays by Aristophanes, *THE BIRDS* and *PEACE*. His work has been produced at South Coast Repertory, Berkeley Rep, Actors Theatre of Louisville, ChildsPlay, the Coterie, the Getty Villa, and elsewhere. He received a 2000 Playwrights Fellowship from the California Arts Council and has taught playwriting and related subjects at UCLA and Pomona College.

JON SCIESZKA (Author) was born in Flint, Michigan on a Wednesday right around lunchtime. He is the second-oldest, and nicest, of six Scieszka boys. No girls. "Scieszka" is a word in Polish. It means "path." He earned his MFA in Fiction from Columbia University in New York in 1980, then painted apartments. Not knowing what he was getting into, Jon applied for a teaching job at an elementary school. Teaching school, Jon re-discovered how smart kids are, and found the best audience for the weird and funny stories he had always liked to read and write. He took a year off from teaching to write stories for kids. He sent these stories around to many publishers, and got rejected by all of them. Through his wife Jeri, he met a funny guy named Lane Smith. Lane was painting illustrations for magazine articles, and working on his first children's book. Jon gave Lane his story—*A Wolf's Tale*. Lane loved it. Lane drew a few illustrations for the story and took it to show many publishers. He got rejected by all of them. Jon and Lane liked *A Wolf's Tale*. They kept showing it around. They kept getting rejected. Finally, Regina Hayes, an editor at Viking Books said she thought the story and the illustrations were funny. She said she would publish the book. And she did, in 1989, with the title changed to: *The True Story of the 3 Little Pigs!* which has now sold over 3 million copies and has been translated into 14 different languages. Over the last 19 years, Jon and Lane have worked together on 8 picture books, including *The Stinky Cheese Man*, which won the Caldecott Honor. Jon's books have won a whole mess of awards, and sold over 11 million copies all around the world. Jon is now working on a giant pre-school publishing program called *Trucktown*. Jon lives in Brooklyn with his wife Jeri. They have two children: a daughter Casey, and son Jake.

Who's Who

LANE SMITH (Illustrator) has received the Lifetime Achievement award from the Society of Illustrators and has been honored by the Eric Carle Museum for “lifelong innovation in the field of children's books.” He is the author and illustrator of the *New York Times* bestseller *It's a Book* which has been translated into over twenty-five languages and he has written and illustrated lots of other stuff like *Grandpa Green*, which was a 2012 Caldecott Honor book and *There Is a Tribe of Kids*, which won the Kate Greenaway medal in 2017. His titles with Jon Scieszka include the Caldecott Honor winner *The Stinky Cheese Man* and *The True Story of the 3 Little Pigs*, both ranked among the 100 best all-time picture books by *TIME* magazine. Lane's books have been *New York Times Best Illustrated Books* on five occasions. Lane and book designer Molly Leach live in rural Connecticut.

STEVE PACEK (Director) Director/Choreographer credits at the Arden: *RENT*, *Ragtime*, *Once*, *The Light Princess*. Regional: *tick, tick BOOM!*, *The Syringa Tree*, (Theatre Horizon); *Man of La Mancha*, *Peter and the Starcatcher* (Delaware Theatre Company); *A Sherlock Carol*, *Merry Little Christmas Carol* (Virginia Stage); *The Prom* (Tantrum Theater); *[Untitled Project] #213*, (Edinburgh Fringe Festival); *God of Carnage*, *Around the World in 80 Days* (Hangar Theater); *A Little Night Music* (UArts); *See What I Wanna See*, *RENT*, *tick, tick...BOOM!*, *Kiss of the Spider Woman*, *Grey Gardens*, *Hair* (11th Hour Theatre Company); *Robi Hager's Basic Witches* (Philadelphia Fringe Festival.) A 2023 Barrymore Award winner for best-supporting actor in a musical and a past recipient of the F. Otto Haas Award, Steve is super proud to be a member of the wonderful Philadelphia Theatre Community! stevepacek.com

KRISTIN FINGER (Assistant Director) is Philadelphia based performer, director, and improviser. Recent theater credits; Director of *POTUS* (City Theater Company); Sarah Jane Moore in *Assassins*, All Adult Women in *Spring Awakening* (CTC); U/S Smeem/Mrs. Bumbreak/Teacher in *Peter and the Star Catcher*, US/Carol/Irene in *Spinner*, (Delaware Theatre Company); U/S Bernadette in *POTUS* (Arden Theatre). She's been a company member with CSz Philadelphia since 2007 where she has created/directed/performed in shows including; *Murder Manor* and *Hallmarkable*. Kristin moderates celebrity panels with FanEXPO across the US and Canada. You can also see her as Hildegard on WHYYPBS's *The Infinite Art Hunt/The Good Neighbor Club*. By day she can be found at The Wilma Theater as the Marketing and Design Manager.

ALEC E. FERRELL (Stage Manager) Arden: *Good Bones*, *RENT*, *Holy Grail of Memphis*, *Intimate Apparel*, *Once on This Island*, *Ladysitting* (World Premiere), *What the Constitution Means to Me*, *The 25th Annual Putnam County Spelling Bee*, *Clyde's*, *Every Brilliant Thing*, *Into the Woods*, *The Snowy Day and Other Stories* by Ezra Jack Keats, *No Child...*, *My General Tubman* (World Premiere), *Indecent*, *Gem of the Ocean*, *Once*, *Fun Home*, *Toni Morrison's The Bluest Eye*, *TouchTones* (World Premiere), *Gypsy*, *The Legend of Georgia McBride*, *The Secret Garden*, *Metamorphoses*, *Macbeth*, *La Bête*, *Three Sisters*, *Parade*, *A Raisin in the Sun*, *Next to Normal*, *August: Osage County*, *Ghost-Writer* (World Premiere), *Blue Door*, *My Name is Asher Lev* (World Premiere). Regional: Adirondack Theatre Festival, Theatre Horizon, Trinity Repertory Company, Eugene O'Neill Theater Center. International: *[untitled project] #213* (Edinburgh Festival Fringe). Proud Member of AEA, SMA. Love and thanks to the family!

CHRIS HAIG (Scenic Designer) Previous scenic designs at the Arden: *Backing Track*, *Sisters! Joilet Harris and Mary Martello*, *No Child...*, *Robi Hager: So Far*, *The Snowy Day and Other Stories* by Ezra Jack Keats, *Tiny Beautiful Things*, *Snow White* and *Every Brilliant Thing*. Chris also served as the Arden's Props Supervisor for ten seasons. A proud University of the Arts alum and former professor, Chris has designed sets and props throughout Philadelphia for 25 years, earning five Barrymore nominations for Best Scenic Design and one win for *Playboy of the Western World* with Inis Nua Theatre Company. Chris is a proud member of the Society of Prop Managers and the Executive Board of Philadelphia Scenic Works. chrishaigdesigns.com

Who's Who

ASAKI KURUMA (Costume Designer) Arden: *The Mountaintop*, *RENT*, *The Lehman Trilogy*, *Backing Track*. Regional: *This is the Week That Is: The Election Special* (1812 Productions); *tick, tick... Boom!* (Theatre Horizon), *Death of a Driver*, *72 Miles to Go...*, *Man of God* (InterAct Theatre Company), *The Winter's Tale*, *Cymbeline* (Delaware Shakespeare Co.), *Siluetas*, *Las Mujeres* (Power Street Theatre), *The Spanish Tragedy*, *House of Desires* (Villanova Theatre), *The Curious Incident of the Dog in the Nighttime*, *The Lightning Thief: The Percy Jackson Musical* (Drexel Theatre), *The Taming!*, *Pericles* (Shakespeare in Clark Park), *Boycott Esther* (Azuka Theatre), *Tiger Style!* (Philadelphia Asian Performing Artists). MA -Villanova University.

ALYSSANDRA DOCHERTY (Lighting Director) Arden: *Intimate Apparel*, *Once on This Island* (Barrymore winner), *What the Constitution Means to Me*. Select Regional: *Sherlock: The Great Detective*, *Beautiful: The Carole King Musical* (Walnut Street Theatre); *Kinky Boots* (New Light Theatre & Delaware Theatre Company); *The Color Purple*, *The Merry Wives of Windsor* (Pennsylvania Shakespeare Festival); *Here You Come Again* (Goodspeed Musicals, Delaware Theatre Company); *Tuesdays With Morrie*, *Peter and the Starcatcher*, *Noises Off*, *Man of La Mancha* (Delaware Theatre Company); *A Sherlock Carol* (Westport Country Playhouse); *Little Shop of Horrors* (Virginia Stage Company); *Primary Trust*, *The Garbologists*, *Sweat* (Philadelphia Theatre Company); *The Play That Goes Wrong* (1812 Productions). Education: BA in Theatre (DeSales University); Apprentice (Goodspeed Musicals). Aly is a three-time Barrymore Award winner. alysandradocherty.com

AJ BLOOMFIELD (Sound Designer) Arden design debut. Arden: *Intimate Apparel*; *Holy Grail of Memphis*; *Good Bones* (Audio Engineer). Regional/Philadelphia: *Oedipus in Seattle* (Projections, Theatre Horizon); *Girlfails* (Lighting, The Lemonade Stand); *Cannonball* (Technical Director); *Annie KIDS* (Sound, WolfPAC). International: *Catholic Guilt* (Lighting, Edinburgh Fringe). Education: Drexel University, BS Entertainment Prod. & Design. AJ is an interdisciplinary theatre technician and designer. He is also the founder and artistic director of The Lemonade Stand, a new works company for emerging artists. Thank you to the Arden for the opportunity and to my family and friends for the immense support. lemonadestandphl.com

TERRENCE J. NOLEN (Producing Artistic Director) is Co-founder and Producing Artistic Director of Arden Theatre Company. Favorite Arden productions include all-Philadelphia casts of *The Lehman Trilogy*, *August: Osage County*, *Death of a Salesman*, and *Hedda Gabler*; and such musicals as *Next to Normal*, *Sweeney Todd: The Demon Barber of Fleet Street*, *Pacific Overtures*, *Violet*, and *Caroline, or Change*. Terry directed the inaugural production of Arden Children's Theatre, *Charlotte's Web*. He has directed eight world-premiere plays by Michael Hollinger, three by Dennis Raymond Smeal, three by Michael Ogborn, two by Rogelio Martinez, and Bruce Graham's *Something Intangible*. Terry has been nominated for 27 Barrymore Awards for his directing work at the Arden and received awards for *The Baker's Wife*; *Sweeney Todd*; *Opus*; *Winesburg, Ohio*; *Assassins*; *Something Intangible*; and *Fun Home*. He directed Michael Hollinger's *Opus* at Primary Stages in New York and was nominated for a Lucille Lortel Award for Outstanding Director. His short film *The Personal Touch* was nominated for an Emmy Award.

AMY L. MURPHY (Managing Director) A Philadelphia native, Amy co-founded the Arden in 1988 with Terrence J. Nolen and Aaron Posner. She is especially proud of the Arden Professional Apprentice program and its contribution to the Philadelphia cultural community. A graduate of Susquehanna University, Amy received its first-ever Young Alumni Achievement Award. She completed the Executive Program for Non Profit Leaders- Arts which is a joint program of the Stanford Graduate School of Business Center for Social Innovation and National Arts Strategies. Amy has served on the Board of the Greater Philadelphia Cultural Alliance and Theatre Philadelphia, as well as the Executive Board of League of Resident Theatres. In addition, she has served on panels for the National Endowment for the Arts, the New Jersey State Arts Council, Philadelphia Cultural Fund, Arts & Humanities Arts Council of Montgomery County and Theatre Communications Group. Amy was named a Hepburn Fellow 2008-9 by the Katherine Houghton Hepburn Center at Bryn Mawr College and was the recipient of the Inaugural Betsy Award, at the historic Betsy Ross House in 2025.

Who's Who

ARDEN THEATRE COMPANY Founded in 1988, Arden Theatre Company is dedicated to bringing to life great stories by great storytellers—on the stage, in the classroom, and in the community. We create and produce new work through the Independence Foundation New Play Showcase. The Arden Professional Apprenticeship program trains future theatre leaders, and Arden Drama School classes teach children and teens about the craft of making plays. Our access program, Arden For All, makes our work available to the entire community through subsidized tickets and books for economically disadvantaged young people, and our Arden Arts Scholarship Fund provides scholarships for Arden Drama School classes and camps. The Arden has received 13 Philadelphia Magazine “Best of Philly” Awards, the Arts & Business Council’s Arts Excellence Award, six City Paper “Reader’s Choice” Awards, four Philadelphia Inquirer “Theatre Company of the Year” citations, 96 awards and 456 nominations from the Theatre Philadelphia’s Barrymore Awards for Excellence in Theatre, and was named “Best Theatre Company” by Philadelphia Weekly in 2009. Arden Theatre Company, a professional, nonprofit 501(c)(3) theatre company, is a member of the Theatre Communications Group, the League of Resident Theatres, Greater Philadelphia Cultural Alliance, Philadelphia Convention and Visitors Bureau, and Old City Arts Association.



**BENCHMARK
SCHOOL**

BUILDING BOBKITTENS SCHOLARSHIP

This transformational program will award a

\$24,400

grant to any family who applies, is accepted, and chooses to enroll in 1st or 2nd grade.

When a young student with dyslexia, ADHD, or other learning difference needs the transformational support that a Benchmark education can provide, it's best not to wait. Thanks to the Building Bobkittens Scholarship Program, you won't have to.

benchmarkschool.org



2025/26

DINING PARTNERS

Restaurants in Old City and surrounding neighborhoods are ready to welcome you! We recommend these restaurants that support the Arden.

Café Tolia*

26 N 3rd Street
267.687.2533
cafetolia.com
@cafetolia

Calandrino's Old City Vino*

110 N 2nd Street
267.930.7443
oldcityvino.com
@oldcityvino

Cuba Libre*

10 S 2nd Street
215.627.0666
cubalibrerestaurant.com
@cubalibrephiladelphia

The Franklin Fountain*

116 Market Street
215.627.1899
franklinfountain.com
@franklinfountain

Fork

306 Market Street
215.625.9425
forkrestaurant.com
@forkrestaurant

Forsythia*

233 Chestnut Street
215.701.4883
forsythiaphilly.com
@forsythia_philly

Fringe Bar*

140 N Christopher Columbus Blvd
215.375.7744
fringebarphilly.com
@fringebarphilly

High Street Philly

101 S 9th Street
215.625.0988
highstreetonmarket.com
@highstreethoagies

Khyber Pass Pub*

56 S 2nd Street
215.238.5888
khyberpasspub.com
@khyberpasspub

Las Bugambilias*

15 S 3rd Street
267.239.5673
lasbugambiliasphilly.com
@lasbugambiliasphilly

National Mechanics*

207 Chestnut St.
267.761.9209
luchacartel.com
@luchacartelphilly

The Plough and the Stars*

123 Chestnut Street
215.238.0499
ploughstars.com
@theploughphilly

Positano Coast by Aldo Lamberti*

212 Walnut Street 2nd Floor
215.238.0499
positanocoast.net
@positanocoastphilly

Race Street Cafe*

208 Race Street
215.627.6181
racestreetcafe.net
@racestreetcafe

Royal Boucherie*

52 S 2nd Street
267.606.6313
royalboucherie.com
@royalboucherie

Stateside Vodka

1700 N Hancock St
215.425.4200
@statesidevodka

Triple Bottom Brewing

915 Spring Garden St
triplebottombrewing.com
@triplebottombrewing

Restaurants with * offer a special promotion to Arden patrons. Please ask your server for details/scan the QR code for more details.

For complete restaurant descriptions visit: ardentheatre.org/dining

Dining Partners as of September 1, 2025



ARDEN SUMMER CAMP

For Kids and Teens



Action packed theatre classes taught
by theatre professionals!

Learn more and register online at ardentheatre.org



Plus, the Summer Teen
Musical Announced!

Stephen Sondheim's

INTO
THE
WOODS

For Grades 9-12:

Audition, rehearse, and perform
the iconic TONY® Award-winning
musical. Work with a professional
director and musical director to bring the
production to life.

Learn more and register online at ardentheatre.org

Corporate, Foundation & Government Support

\$100,000 and above

Hamilton Family Charitable Trust
PA Department of Community
and Economic Development
The Pew Center for Arts & Heritage
Rosenthal Family Foundation
Shubert Foundation
William Penn Foundation

\$50,000 to \$99,999

Harmelin Media
Wyncote Foundation

\$25,000 to \$49,999

Anne M. and Philip H. Glatfelter III
Family Foundation
Bell's Market
The Horace W. Goldsmith Foundation
PECO Energy
Harold and Mimi Steinberg
Charitable Trust
The Victory Foundation

\$10,000 to \$24,999

Arcadia Foundation
Fox Chase Bank Charitable Fund
Gray Fin LLC
Independence Foundation
John Ciccone Playhouse Charities, Inc.
The Haley Foundation
The Sylvia W. and
Randle M. Kauders Foundation
Pennsylvania Council on the Arts
Pincus Family Foundation
PNC Charitable Trusts
The Suzanne Roberts Cultural
Development Fund
TD Charitable Foundation
Truist
Univest Financial
Zeldin Family Foundation

\$5,000 to \$9,999

Bendita Foundation
Civic Foundation
Comcast Corporation
Cuba Libre+
Janet Yaseen Foundation
Lincoln Financial Foundation
Parkway Corporation
Sun East Foundation

\$2,500 to \$4,999

Charlotte Cushman Foundation
Christopher Ludwick Foundation
Connelly Foundation
Elliott-Lewis Corporation
Franklin Fountain+
Fringe Bar+
Fulton Bank
Hamilton Family Foundation
Greater Philadelphia Cultural Alliance
Las Bugambillas+
Linda and David Glickstein Fund
of the Philadelphia Foundation
Philadelphia Activities Fund
The Plough and the Stars+
Positano Coast by Aldo Lamberti+
TCF- The Community's Foundation

\$1,000 to \$2,499

Alex J. Ettl Foundation
Cafe Tolia+
Calandrino's Old CityVino+
Dolfinger-McMahon Foundation
Forsythia+
Firsttrust Bank
Global Atlantic Financial Group
Hassel Foundation
Khyber Pass Pub+
Christian R. and Mary F. Lindback
Foundation
National Mechanics+
Race Street Cafe+
Rittenhouse Foundation
Royal Boucherie+
Triple Bottom Brewing+

Up to \$1,000

Actors' Equity Foundation
High Street Philadelphia+
Greenberg Traurig- Northern VA
Paul L. Newman Foundation
The R. Andrew Swinney Presidential
Achievement Fund of the
Philadelphia Foundation
Quaker Printing+
Weavers Way Co-op+

Employee Giving, Matching Gift, Donor Advised Fund Partners

American Online Giving Foundation
Bank of America
Bristol Myers Squibb
Cadence Design Systems, Inc.
Cencora
Charities Aid Foundation of America
The Chicago Community Foundation-
CIGNA Corporation
Comcast Corporation
DAFGiving 360
Dell
Dun & Bradstreet
Equitable / AXA Foundation
Every.org
Exelon Corporation
Fidelity Charitable
Friends of Education
Give Lively Foundation
Global Atlantic Charitable Gift Fund
Google
GS Donor Advised Philanthropy Fund
for Wealth Management
Impact Assets
Independence Blue Cross
Independence Foundation
Intel Foundation
Jewish Communal Fund
Johnson & Johnson
JP Morgan Chase & Company
Macy's/ Bloomingdale's
Mastercard
McKesson Foundation
McKinsey & Company
Morgan Stanley Gift Fund
Merck Foundation
National Philanthropic Trust
PayPal Giving Fund
PECO
Penn's Way
The Philadelphia Foundation
Pfizer
PricewaterhouseCoopers, LLP
Radian Group, Inc.
Renaissance Charitable Foundation
Susquehanna International Group, LLP
TD Bank
Thrivent Charitable Impact & Investing
Toast
United Way
Vanguard
Vanguard Charitable
William Penn Foundation

*This list represents gifts made
through March 23, 2026*

+ Denotes a gift of goods or services

CENTER CITY CAMPUS FOR PRESCHOOL & PREK



NOW OFFERING FLEXIBLE SCHEDULES at our Center City Campus

Guided by Quaker principles, our multidisciplinary curriculum combines structured activity and free exploration to foster children's natural curiosity and build the foundation needed for success in Kindergarten—and beyond.

**INQUIRE, VISIT,
OR APPLY NOW!**



Main Campus | Preschool–Grade 12: 31 W. Coulter Street
Center City Campus for Preschool & PreK: 601 Walnut Street, the Curtis Atrium
215-951-2345 | germantownfriends.org

FRANKLIN'S KEY

⚡ A Pig Iron production
Written by Dan Rothenberg
& Robert Quillen Camp ⚡

During the War of Independence, the British feared Benjamin Franklin could control the weather.

What if that were true?

Find out in this Barrymore Award-Winning family-friendly adventure where science and magic collide.

June 11–28, 2026
Plays & Players Theater
1714 Delancey Street, Philadelphia

FRANKLINSKEY.COM



Get Tickets Now



The
Sylvan Society
Arden Theatre Company

Grounding the Present, Nurturing the Future

The Sylvan Society recognizes individuals who support the Arden's work by making annual gifts of \$1,000 or more.

The special generosity of our members enables the Arden to tell great stories by having the resources to achieve the highest level of artistic quality.

*This list represents gifts made through February 16, 2026

Oak Grove
(\$50,000 and above)

Nancy and Bob Elfant
Joanne and Jon Harmelin
Monica and Philip Rosenthal
Harvey B. Swedloff

Chestnut Grove
(\$25,000 - \$49,999)

The CHG Charitable Trust
Kate Groark-Shields
Michael Grove
Jessica Phelan
Lee and Chris van de Velde
June and Steve Wolfson

Sassafras Grove
(\$10,000 - \$24,999)

Sally Bailin
George Benes and Michael Mallee
Sandy and David Beswick
Lois G. Brodsky
Rayenne A. Chen
Anne Cook and Russ Troyer
Christina and David Fryman^
Elizabeth Gemmill
Terry and Ann Marie Horner
Deborah R. Kravetz and
Bill Robling
Robert and Risa Lavizzo-Mourey^
Peggy Morgan and Patty Bowman
Charles Rose
Bernard and Camille Rosenberg

Cherry Grove
(\$5,000 - \$9,999)

Anonymous (2)
Brian Abernathy and
Elizabeth Ireland
John R. Alchin and Hal Marryatt
Brett and Nan Altman
Richard and Kathleen Aregood
Bethany Asplundh
Andrew Bickford and
Kristina Denzel Bickford
Brenda and Marty Brenner
Diane Dalto and
Richard Woosnam
Ann E. Diebold
Deb Dorsey and Mike Green
Laura Drake
Stephen Falchek and
John Offidani III~
Shannon and Ted Farmer
Jill Fisch and John Gassenheimer
Richard Harris
James and Carolyn Hessinger
Valerie Koscelnik
Robin and Saifuddin Mama
Elesa Nelson
Alexis and Ed Pappas
Ceth and Sam Plum
Joel and Bobbie Porter
Rosalyn K. Robinson and
Warren B. English
Sid and Ruth Rosenblatt
Sharon and Irv Shapiro

Hether and Don Smith
Rosalyn and Stephen Weinstein
Nancy Brent Wingo
Hope Yursa

Filbert Grove
(\$2,500-\$4,999)

Charles Arnao and
Rosemary Watt^
Carol Beam
John and Amy Bitman~
Laura Carey
Bob and Cheryl Carfagno
Karl Carter
Barbara Cobb
John Coleman and Diane Runyan
Kortney Cruz
Fern and John Culhane
Michael A. and Edward C. Donato
Paul and Judy Farber
Donna and Norman Faye
Elizabeth Fernández-Viña~
Linda and David Glickstein
Jennifer Harmelin
Eileen Heisman and Marty Tuzman
Ed Hillis and Audrey Cohen
Peter* and Louise Kelly
Holly and John Kleimo
Kenneth and Eve Klothen
Peter J. and Sandra Klugman
Marilyn and David Kraut
James Kronzer
William A. Loeb*

Sylvan Society cont...

Janice Madden and Carl Sheingold	Ed Chew	Kelly Grattan and John Lopez~
Linda McAleer	Brian Cleary	William and Joan Greenfield
Amy Murphy and Terry Nolen	Cordelia Clement	David C. and MaryJane Hackney
Kimberly C. Oxholm and Carl Oxholm III	Marc and Margie Cohen	Ann and Glenn Haig
Ron and Pam Pontano	Kelly Colarelli~	Anne Halkedis^
E. Graham and Elizabeth Robb	The Susan Lavine	Ellen and Steve Harris
John and Claire Rodgers	Coleman Charitable Fund	Hon. Lillian Harris Ransom
Ellen Schwartz and Jeremy Siegel	Gregory L. Coleman	Dr. Valerie Harrison
Kathy Sernak	Katherine Davies	Don and Lynn Haskin
Gayle and David Smith	and The Garland Family	Janis Hawes and
Keith and Jim* Straw	Rebecca Davis and Mark Hoffman	Patrick Cunningham
Stephen and Kathy Thompson	Ellen Deacon~	Charles W. Head Jr. and
Allison Weissman,	Joy De Jesús and James Reynolds	John A. Faggotti
In Honor of Bebe Maritsis	Robert M. Dever	Heidi Hertfelder^
	Tobey and Mark Dichter	Karen and Mark Hite
	Eric Dube and Gregory Simone	Deborah M. Hluchan
Mulberry Grove	Jonathan V. Edmondson^	Phyllis Hochberg and Stuartz Katz
(\$1,000-\$2,499)	Carol Eicher	Diane Hlywiak
Anonymous (8)	Jonathan and Nancy Ellsworth	Diane Hofer
Jerry Abelson and June Izdal	Epstein Family Charitable Trust	Tim and Renee Jessell
Joey Abramowicz and Jeff Coon	John Erickson and Harry Zaleznik	Jill Hyman Kaplan and
Hank Adamczyk and	Susan Extein and Lucy Hyatt	Elliot Kaplan
Iris Melendez	Lisa Fair	Rachelle and Ron Kaiserman
Becky and John Adams	Mr. Jeffery* and Mrs. Reva	Margie and Scott Kasner
Diane and Katie Alessi	Farenback-Brateman	Holly Kinser
Stan and Lisa Altman	Dr. Mark and Mrs. Rene Feitelson	Carol Kelley
Winifred Anderson and Eric Lien	Jeanne Fisher	Steven Klein
Jennifer and Stephen Arms	Carole M. Foley	Steven Knepper
Jim and Janet Averill	Dieter and Sara W. Forster	Thomas and Anne Kohn
Sheryl and Allen Bar	Ellen and Tim Foster	Bernadette Koller
Sheila Bell	Sandi Foxx-Jones	Cyndy Krieger
Jay and Nancy Berkowitz	Nancy Freedman,	Mary Ellen Krober
Linda and Mark Bernstein	In Honor of David Pressel	Cyana La Divertida
Bill and Brenda Bertrand~	and Jill Feldman	Mr. Robert Leventhal and
Ian and Ryane Nicole Beutler	Lou and Rhoda Fryman	Ms. Cheryl Getty
Louis Bluver	Paula Fuchsberg	Michael Litchman
Reid Bodek	Chekemma Fulmore-Townsend	Pamela and Paul Litwack
Tony Brown	Dan Gannon	George A. Loeb
Ann and David Brownlee	Joel R. Gardner and	J.C. and Melissa Lore
Elizabeth Campbell,	Holly A. Phelps	Michael MacFarland~
In Honor of	Julie and Tom Gennaro	Richard Maimon and Susan Segal
Eva, Cora and Maisie	Joseph and Jane Goldblum	Lee Marks* and Lisl Zach
Christopher and Jeffrey Carver	Janet Lynne Golden	Barb and Don Matheson
Dr. Lawyer and Rosetta Chapman	Terry Graboyes	John and Amy McCawley^

Sylvan Society cont...

Kathy McMaster
Peter and Laura
(nee Beckie) McQuaid
A.C. Missias
Joann Mitchell
Leslie and Michael Molder
The Moxley Ott Family^
Adam Mussell and
Kate Whittington~
Marjorie Neff and
Dan Winterstein
Kathleen Nelson and
John Kromer
Arnold and Shelley New
Hung Nguyen
Mary Ivy and Roger Noone
Michael Norris and Matt Varrato
Susan Odessey
Michael Ogborn and
Robert Soslow
Barbara Oldenhoff
Dan O'Neil and Travus White^
Robert Overell and Lisa Glasser
Don and Barbara Parman
Brian and Melissa Pinheiro
Claire and Lud Pisapia
Laura and Douglas Pratt
David Pressel and Jill Feldman

Salvatore Priore
Daniel Promislo
Aneira Puttaswamy
Alan Reinach and Dana Perlman
Alice Reyes
Joy Rickabaugh
Franklyn and Cintra Rodgers
Jane A. Rose, CPA/PFS
Mike Salmanson and Tobi Zemsky
Gisèle Sambar Bathish
Becky Sassi
Geoff Schmidt and Marie Wong
Kim and Ross Schmucki
Terri Schwomeyer
Genvieve and Clete Shields~
Roy and Lee Shubert
Laura and Ron Siena
Paulette Singleton
Patricia Smialkowski and
Ben Kaplan
Kathy and Don Smith
The Spector Charitable Trust
Rudy Sprinkle and
Andrea Barsevick
Mike and Shannon Stellato~
Robert and Sydney Stevens
William K. Stewart, Sr. Foundation

Eric Tamulonis and
Deirdre Gibson
Adrienne Topic
April J. Tvarok
Nancy Urbschat
Jason Vail
Donna Visioli~
Lewis and Hella Volgenau
Donna and Andrew Wechsler
Thomas and Dawn Weiss^
Ellen Yin+
Beth Zatuchni and Jerry Satlow~
Tom and Jackie Zemaitis
Heidi Zod

* Denotes a deceased supporter
+ Denotes a gift of goods or services
^ Includes a matching gift
~Includes a monthly gift
This list represents gifts made through
March 25, 2026

THE LEGACY SOCIETY

Arden Theatre Company would like to recognize the following supporters who have included the Arden in their wills or estate plans. Their planned gift provides support which will help sustain the Arden's work for decades to come.

Anonymous
Ms. Peggy Anderson*
Stanley Baurys*
Ivy Bayard*
Jane Berryman
Louis Bluver
Mary P. Burr
Pearl M. Cappel*
Larry S. Friedman* and
Dean H. Rishel
Ellis Ginsberg*
Peter Gistelinck and Kim Bloom

Grace Goglewski and
Eric Schoefer
Gary R. Grob*
Kelly Grattan and John Lopez
David C. and
Mary Jane Hackney
Jim and Carolyn Hessinger
Suzanne and James Hill
Alan and Nancy Hirsig*
Mary Ellen Krober
DawnLynne Kacer and Family
William A. Loeb*

Donald Martin and
Richard Repetto*
Peggy Morgan
Tom Petro and Kris Messner
Kristen Phillips and Matt
Schreck
Renee E. Polsky*
Madeline Portnoy
Irene M. Reiter*
Dr. Harry Rosenthal
Marilyn and Dean Staats
Carolyn and Richard Weaver

We hope you will consider including the Arden in your will or estate plans. To be recognized as a member of the Legacy Society or with questions regarding planned giving, please contact Jessica Abel, Director of Development, at 215.922.8900 x149.

Thank You to Our Supporters

\$500-\$999

Anonymous
Eileen Abel
Lawrence Abramson
Kim and David Adler
Raymond Becker and Richard Wilson
Ellen Baxter and Robert Kavash^
Jacob and Crystal Brogan
Vincent Burkheimer
Beth Burrell and David Sorensen
Joseph and Helen D'Angelo
Michael Delaurentis
Kathy Duffy
Jason and Jennifer Ellsworth-Aults
Janet Ginzburg and John Caskey
Karl Janowitz and Amy Goldman
Grace Gonglewski and Eric Schoefer
Marianne Green
Patricia Haney
Rhoda Harrison
Steve* and Jane Heumann
James Hinrichs
Glenn Holsten
Jane Kamp and Thomas Lloyd
Barbara and Jerry Kaplan
Ms. Leslie A. Kase
Stephen Kieran
Janice King
Ruth and Peter Laibson
David Lerman and Shelley Wallock
John and Martha Lubell
Susan Mack
Lynn Marks and Clifford Pearlman*
Mary Ellen Marzullo~
Adrienne Mendell
Nancy Middlebrook
Susan and Alan Miller
Siddhartha Misra^
Linda Moskowitz
Shannon Mullican and Kurt Schillinger^
Paul Nutaitis and Bob Clark
Barbara Porter
Janet and John Poth
Paul Rabe and Cheryl Gunter
Susan and Steve Reisbord
Rachel R. Reynolds
Daniel and Faye Ross, The Ross Family Foundation
Dan Rothermel and Michael Hairston
Carole M. Saft
Karen Schermerhorn and Evan Seymour
Larry and Carol Segal
Joseph and Louise Shaffer^
Wystan Simons
Jennifer L. Sirois+

Thomas Sherman and Nancy Middlebrook
Stuart and Paula Solomon, In Honor Of Sydney Solomon
Barbara and Robert Stewart
Susan and Jim Strohmman^
Elena Tappit-Emas
Mary Thomas
Vivian Weinblatt
Joyce Weiner and Albert Tedesco
Abigail Wolf and Jonathan Weiss
Joan and Dane Wells
Ceci Yin^

\$250-\$499

Anonymous (3)
Stuart M. Adair~
Jay Anstee
Robert and Sandy Clay Bauer
Ellen Baxter and Robert Kavash
Richard and Eileen Bazelon
Pat and Tom Bender
Sara and Bruce Berger
Ruth Berman
Charlotte H. Biddle
Fern and Robert Billet
Barbara Bisgaier
Linda and Alden Blyth
Janice Bogen
Tom and Mary Pat Boyle
Barbara Bromfield
Riley Brown
Carol and Allen Bonner
Wayne Bullaughey
Stephen and Eleanor Bulova
Monika Burke and Kresimir Starcevic
Chip Capelli, In Honor of Amy Murphy
Debbie and Alan Casnoff
Elizabeth Cerkez and Alec Schoenfeld
Leah Chaplin and Eileen Gildea
Stephen Chrzanowski and Karen Feisullin
Annemarie F. Clarke and David L. Buch~
Diane and Patrick Close
Mark Cohen and Marty Johnson
Janet and Richard Conn
Carol Cook
Carol Copland
Marsha Covitz
Betty Cooper
Jill, Katie and Hank Croft
Helen Newbold
Bill Davis and Lisa Handler
William Diebold and Deborah Freedberg
Stuart and Diana Donaldson
Robert Earle^
Michael Edelman
Mary Lynn Ellis
Norman and Carolyn Ellman

Anne C. Ewers
Steven and Cheryl Feil
John and Nancy Fischer
Jacqueline Foldesy
Adam Ford
Karni Frank
Carol Fuoco~
Brenda Furtak
JJ Garcia and Charlie Dreisbach^
Mary Geisz and Keith Pryor
Teresa Gillen
Scott and Lynda Glading
Diane and Frederic Graboyes
Yoni, Tracy and Omari Greenbaum
Carol Gregory
Dennis Grubb
Trudy and Paul Guterman
Carol Hauptfuhrer
Alice Hennessy
Lauren Hersh
Richard and Barbara Hirsh
Terry Hirshorn
Michael J. Hozik and Margaret L. Rea
Peter and Nora Hunt-Johnson
Thomas Hurster and Jacqueline Salmon~
Mary and Howard Hurtig
Jim Hutchison and Nanci Ritter
Anna Jacobsen
Becca Jensen Compton
William Jordan*
Anne and Craig Jorgensen
Lisa and Perry Kahn
DawnLynne Kacer and Family
Adam Kamens
Phyllis Kauffman
Douglas and Ruth Keating
Jill Kemp
Michael and Marie Kenis
Kate Kidder
Rachel and Will Kipnes
Brian and Caren Kirschner
Paul and Michelle Kleschick
Maris Kobb
Bea and Norm Leopold
Sharon Levin
Norman and Sylvia Lieberman
Larry and Nancy Ludgus
Robert Ludwig and Joan Ryder
Theresa Mader and David Suter
Lorraine and Bruce McMahon
Cirel and Howard* Magen
Rose Malague
Lynn Mark
The Kathleen J. Moyer Charitable Fund
Christopher Mullins
Frances Novack
Deb Olley and Brian T. Murphy, In Honor of Deb Dorsey and Mike Green
Timothy O'Malley

Thank You to Our Supporters

Carherine Ormerod
Mr. Larry Pace
Enrico Pagnanelli
Joseph Palumbo
David and Amy Pollack
Sandy Portnoy
Ilene and Coleman Poses
Nick and Peg Potalivo
Carol and John Rauch
Krista Reichard
Kurt and Mary-Ann Reiss
Michael Riccardi
Robin Rifkin and
Michael Silverman
Gary and Robin Risler
Claire Rocco
Edward and GERALYN ROCK~
Robert L. Roessler
Maxine Romano
Len Romberg
Carey and Robert Roseman~
Liz Rosen
Richard and Anne Rosenberg
Anthony Rostain
Adelle Rubin
Daniel and Corey Rudderow
Marilyn Sanborne
Les Schlessinger
Perlita and Frank Schorfheide
Jill and Kerry Schuman
Lauren and Daniel Schwartz
Harry Segal, In Honor of
Susan Segal

Ellen Somekawa and Eric Joselyn
Rita and Neil Stevens
Gay Strickler, In Honor of
Anne Cook
Misha Swanson
Richard Urbani
Carol and Paul Vahlstrom
Stephanie and Darrell Velegol
Annalouise Votta
Meg von Mehren and Eric Moss
Mark Wade
Barbara Wasserman
David Warshal
Marlene Weinberg
Doris A. Williams
Linda Witt and James Marsh
Arnold Wolf and Fern Tablin

\$125-\$249

Anonymous (7)
Jennifer Allegra
Hale Allen
Virginia Alpaugh~
Diana Alteegoer
Howard and Patricia Anton
Susan Apkon
Adrienne Athanas
Carl and Pat Bach
David J. Baker
Pam and Earl Ball
Cecily Banks
Maria Banks
Laurel Bar and Mimsye Katz

Judy Barrett
Maureen Barrett and
Mike Templeton
Stacy Bartram
Terry Bayer
Barbar Bell-Hawkey
Jean Bennett
Sandra C. Bennett
Sue Bentson
Timothy Berger and
Sarah Mooers
Zak Berkman
Girish Bhat
Lynn Biondi
Stacy Blacksheer
Ilene Blain
Nathan Blum and
Barbara Rolnick
Christine Blumenthal
Stuart Bogom and Dorel Shanon
Ethan Boldt
David Bolles
Miriam Bowerman
Helen Boyle~
Michael P. Boyle
Leslie Bradley
Stanton and Jill Braid
Gary Bramnick
Amy Brantz and
Edward Bedrick
Michael Brassloff
Joseph and
Mary Lou Breidenstine



1689
William Penn
Charter
School

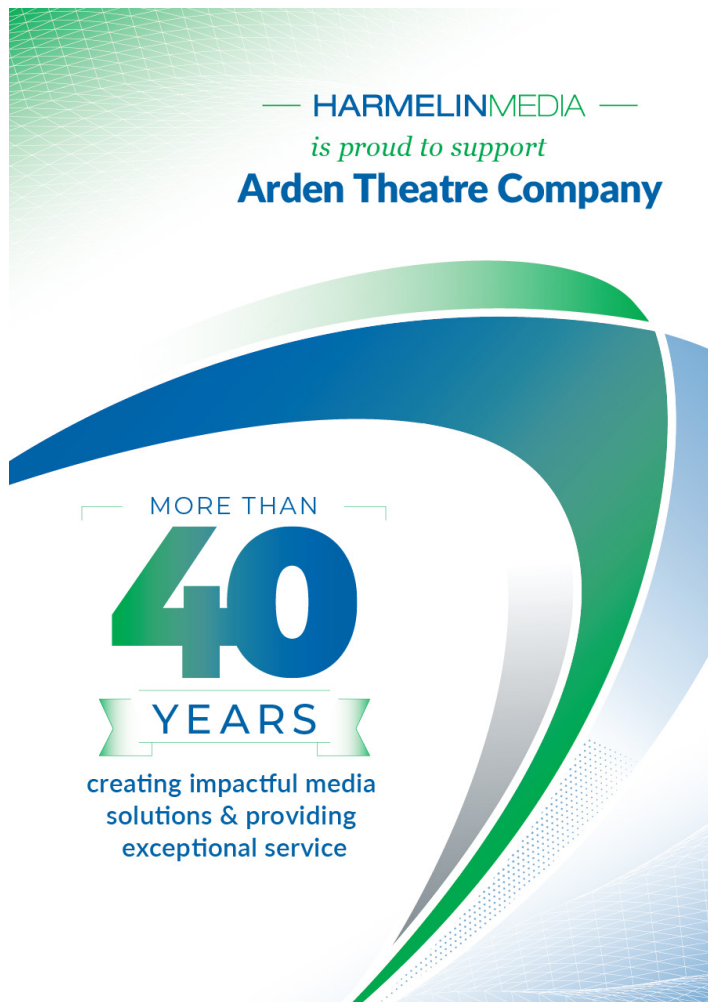
LET YOUR
Light Shine

Start by joining us on campus.



Thank You to Our Supporters

Ed Broderick and Erin Duffey
Alice Bronstein
Maureen Brown
Peter Brown
Aimee Brywka
Jeanne Calloway
Shellie Camp
Sarah Campbell
Larry Carlin
Mr. Keith Case
Caroline M. Castagno
Steve Castleton
George and Barbara Chalmers
Mrs. Patricia Chamberlin
Janhavi Chandra
Kat Christopher
Randi Chud and Bob Frey
Mayda Clarke
Miles Cohen
Vanessa Cohen
Lita Cohen
Barbara AC Cohen~
Michael and
Ellen Singer Coleman
Rick and Carol Collier
Ms. Nancy Conahan
Simon Connor
Janet Connor Love
Janet Cook
Donna Cooper
Barbara Cortese
Daniel Corti
Robert Craig
Sue Crow
Cynthia D'Ambrosio
Todd and Christine Darr
Jennifer Davies
Kelly and Steve DeAngelis
Rhonda Dickey^
Katarzyna Do
Harriet Dobin
Margaret M. Dolan
James H. Dovnarsky
Elise Drake
Donald Drake
Donald and Geraldine Duclow
Ryan Dunne
Linda Earle
James Eberwine
Harvey and Faith Edelman
Jeff and Michelle Eichen
Richard Elgart
Ted and JoAnn Erfer
Steven and Amy Erlbaum
William* and Anne Ewing
Mark Fisher
Pamela M. Fisk
Joan Flank
Fred and Kay Fletcher
Kenneth Foster and
Mary Jenkins
Kimberly Foster^
Marisa Freda
Paulette Freeman



Douglas Frenkel and
Marlene Weinstein
Christine Fricker Moore
Cheryl Friedenberg
Maryanne Noel and
Philip Friedman
Matt Fuss
Abraham Gafni
Dennis Gallagher
Miriam Galster
Janet-Lynn Garrabrant
Hugh Gayton
Mary Geisz and Keith Pryor
Greg Gephart
Jamie Giambrone
Waseem Givens
Joan D. Gmitter
Illse Goldfarb
Amy Goldstein
Chris Gray
Tierney Griffin
Michelle Grimley

Erin Grubb
Craig Gunnett
Nava Hall and John Lionarons
June Hament
Elaine Harris
Philip Harvey
Susan Havens-Lang
Don Henry
Wendy and Steve Hess
John Heward~
John and Marcia Hiehle
Joanne and Michael Hinton,
In Honor of Harvey Swedloff
Leonard and Audrey Hoffman
Toby Hogan
Linda Hollenback
Esther and Robert Hornik^
Lynda Hubbell
Steven Humphreys
Dave Ingram
Gwynne L. Isaacs
Rinu Jacob

To join the *Sylvan Society* or for more information on how you can support the Arden, please contact Orelí Uzdavinis, Manager of Individual Giving, at 215.922.8900 x131 or ouzdavinis@ardentheatre.org

Thank You to Our Supporters

Hildy Jaffe and Dan Lasdon
Timothy M. and
Carol M. Johnson
Martha Johnston
Christina Jones
Debbie Joyner
Ellen Kaplan
Mr. Bradley Kaye
Nina Keenehan
Lisa Keiner
Chrissy Kind
Suzanne King
David Klein
Ken, Eva, and Aaron Klein
Marlena Kleit
Elena Koshkina
Vicki and Don Kramer
Daniel Lai
Andy Lamas and
Ginny Vanderslice
Doug Layne
Michael L. Levitan
Mary Lee and Bill Lieser
Kathleen and Daniel Lipinski
Laurel and Robert Lipshutz
Linda Litwin
Diane and Michael Love
Susan and James Lytle
Kathleen Mahan
Joseph M. Manko
Linda and David Marder
Fran Martin
Jane Martin

Ken and Margery Maurer
Jane O. McCahill
John McCormick and
Ken Schmitt
Patricia McDonough
Victoria McFarland
Michelle McFarlane
Barbara McGlynn
Micheline McManus
John McMillan
Arthur and Sallie Melvin
Mark Mendenhall
Joanne Meredith
Cheryl and Gerald Meyer
David and Concetta Milano
Katie Milgrim
Sandra and Martin Miller
Melanie Miller
Dale Mitchell
Melba Moore
Kenneth and Susan Myers
Linda Nelson
Pamela Nelson
Jennie Nicolayev
Laura Nicoletti
Etta and Charles Nissman
Mary Nolen
Mr. Joe Norton
Janet and Dennis Novack
Jim and Patti O'Connell
David and Monda Noyes
Judith O'Dell
Brenda J. Oliphant

Linda Osler
Dr. Douglas Overtoom
Michele Palamountain
Diane Panepressio
Jason Pantano
Michael and Judy Paul
Anne Peniazek
Bob Perdick and Lenny Smith
Mary Perkins
Teresa Peterson
Matthew Pettigrew and
Mary Martello
Andrew Pettit
Kathy Pettit
Marsha Pincus
Deborah Pines and
Carl Perchonock
Martha Platt and Marlis Kraft
Tara and Andrew Poag
Elizabeth and Jeffrey Podraza
Florence Poris
Dr. Nancy Post
Shaila Prabhakar
Michelle Pryor
Ange and Jan Puig
Kirsten Raleigh
Mark and Karen Reber
Mr. and Mrs. David and
Diane Richman
Andrew Ribbe
Kathy Rigby+
Judith Ring
Kelley Roberts



Thank You to Our Supporters

Adriana Robinson
Sue Roh
Lou and Laura Romano
Carey and Robert Roseman~
Maxine Rosen
Murrey Rosenberg
Shelley Rosenberg
Martin and Carol Rosenblum
Hal Rosenthal
Michael Roswell
Rene Rubin
Lila and Vincent Russo
Elizabeth Ryan
Janice Saibel
Bill and Joan Saidel
Kelly Santoro
Nathan Schatz
Julianna Schauerman
Nathan and Dolly Schnall
Doron Schneider
Mark Schreiner
Mark and Nancy Schure
Judy Schwan
Evelyn and Harold Schwartz
Janet Sclaroff
Lisa Semeraro^
Edward Senn
Jesse Shafer
Karen Shakoske
Philip and Lind Shalanca
Gioia Sharp
Peter and Darlene Sherman
Debbie and David Silver
Celestine Silverman
Claudia Simon
Alisa Skatrud
Rhonda Smith
Alison Smith
Wayne Snover and Janet Tebbel
Hillel Soifer
Jeremy Souder
Barbara and Steven Speece
David and Daria Spingler
Marilyn Staats
Martha Stan
Konnie Stark
Dr. Christina Stasiuk^
Stephanie A. Steed
Paul Steege
James and Lisa Steiker
Thomas and Molly Suddath
Margaret Sulvetta
Sylvia Szapak
Daniel Szyld and Kathleen Ross
Michael Tardis
John Tarves
Dorothy and Bryce Templeton
Tyrone Thomas
John Thomas
Kelvin K. Thompson Sr.
Marian Tracey
Judy Trailer~
Mr. Nova Tucker
Lyn Tuckman
Elaina Tully
Bryan Ulishney^
John Urofsky
Kellee Van Aken

Claudia Vanwyk
Leonard and Nancie Velcik
Nora Vizzachero
Patricia Vogler
Darrell Velegol
Annette Voltz
Ian Wachstein and
Michele Zeldner
Annie Wagoner
Marc and Tova Walton
Leonard Wasserman
Michael Webber
Joan Weiner
Shelly and Fred Weiner
Sarah Weinstein
Margo Weishar
Davis Weiss
Teresa Welsh
Constance West
Gwen White
Ann Wilson
Joy Wittenburg
Richard Willis and
Linda Hartnett
Angela and
Michael Winterrowd~
Karen Wittig
Dafna Yachin
Debbie Zakehim
Diana Zalewski and
Edward Fink^
Bruce Zewe

\$75-\$124

Anonymous (10)
Anonymous, In Honor of
Arden Drama School
Scholarship
David and Eileen Abels
Dinah Abelman, In Honor of
Charlie Rose
Linda Adams, In Honor of
Peter Adams
Diane Ajl
Andrew Amuso
Mary Anthony
Cheryl Apprey
Phil Argyris
Anne Arian
Sandra Arnold
Jody Artur
Luanna Ausen
Anne Ayers
Theodore Bahner
Elizabeth A. Baker
Deborah A. Bambino
Theresa Baraldi
Ann Barbarin
Janice Barbour
Fred Allen Barfoot
Sally and Morris Barron
Peter Bartkowski
Nathalie Bartle
Joseph Bartman
Lean Batchis
Chris Batcsics
Amanda Bauman
Frances and Michael Baylson

Nancy Bea
Gregory Beasley
Thomas and Eileen Beck
Judy Beck
Flora Becker
Jim Becker
David Belanger
Ian and Carolyn Bell
Michele Bennett
Sandra C. Bennett
Mr. David Berch
Andrew Berenato
Adam Berger
Irene Berkowitz
Connie and Dick Berman
Andrew Betts
Barry and Marilyn Bevacqua
Linda Bianchi
Cordelia F. Biddle
Belinda Birnbaum
Christine and Chris Bischoff
Wendy Blackburn Eastland
Charles and Mary Blakinger
Jocelyn Block
Wayne and Marcia Blodgett
Ines Bloom
Lori and Giovanni Blount Cucchiaro
Cynthia Bohse
Rebecca Bolden
Jane Bonenberger
Sonja Bontrager
Linda and Andy Borson
Iris and Michael Boshes
Viola W. Bostic
Janet Bowker
Mary Ann Boyer
Carolyn Braciszewski
Edward Brazell
Thomas Breedon
Jennette Brian
Ira Brind
Eadie and Allan* Brooks
Judith Broudy
Dorothy Brown, In Honor of
friendship with Libby Rosof
and Murray Dubin
Gary Brownstein
Erica Brunette
Lisa Brown
Patricia Bruner
Eleanor Buenafior
Janice Burgh
Nora Burridge
Crystal and Tom Bush
Amber Bush
Alexis Buss
Kathleen Butts
John Calaitges
Ann Callaway
Francis and Mary Calter
Ms. Carol Campanelli
Holly Campbell
Joseph Candeloro
Denise Canner
Hugh Cannon
Erica Carpenter
Carol Carroll
Donna Casciola

Share the joy of theatre with students!

Did you know? Arden for All (AFA), our in-school arts residency, is approved for **Pennsylvania's Educational Improvement Tax Credit (EITC) program.**



**Designate your tax dollars towards bringing theatre
to classrooms across Greater Philadelphia!**

Significant Tax Savings

Receive a 90% PA state income tax credit and a 10% federal itemized charitable deduction.

Direct Impact on Education

Directly support educational opportunities for students in need.

Simple Process

The Arden has partnered with Friends of Education to make donating through EITC easy! Learn more at pataxcredits.org.

Questions? Please reach out to Jessica Abel at 215.922.8900 x 149 / jabel@ardentheatre.org.

Thank You to Our Supporters

Joseph Casey^
Lillian and William Cassel
Troy Cawley
Scott Chambley
Julia Chapman
Kathy Chase
Joan Chmiel
Jolley Christman
Kathleen Cipparone
Alex Ciullo
Ruth Clauser
Isabel Cochran
Matthew Cohen
Beth Cohen
John Collett
Kimberly Collins
Jane Combrinck-Graham
Colleen Conaty
Mr. John Concannon
Jim Connell
Michael Connor
Gavin Cooper
Donna Cordner and
Brent Groce
Pamela Costanzi
Keith Cox and Virginia Mallonee
Abigail Coyne
B. Karen Coyne
Christine Coyne
Stephen Craig Family
Bill Creelman
Sara and Allan Crimm
Beckwith Cromer
Gwendolyn Croston
Kortney Cruz
Paul Curcio
Louise Curl Adams
Richard Curley
Kathleen Curran
Lynne Cutler
Jessica Dale
Dahvia Dalton
Bart Davidoff
Gilbert Davis
Adam Davis
Thomas and Eileen Davis
Gina Daviso
Katy Dawley
Jane Day
Peggy de Wolf
Nancy DeCarlo
Betsy Decy
Nancy Deibler
Jennifer Deja
Colleen DeLeo
Emilia Demarco
James Derr
Mrs. Darlene Di Paolo
Helen Dichter
Lori Dick
Nergis Dincer
Kathy and Eric Dobrzynski
Joanne Donahue
Ms. Donohue
Margaret Dooley
Patrick Dorsey
David Dotzert
Judith Drasin

Iris Duffield
Regina Duffin
Shannon and Pat Dunn
Lisa Dustin
Shirley and Wayne Dustman
Jonathan and Ella Edwards
Ms. Gladys G. Eilberg
Ricki Eisenstein
Laura Ekstrand
Linda V. Ellsworth
Mary Louise Elston
Beverly Emanuel
Jack Ende
Edmund and Judy Erde
Jack Erickson
Arturo Espinoza Jr.
Sonja and Thomas Eveslage
Susan L. Extein and Lucy Hyatt
Sonia Fair
Karen Falcon
Mrs. Kate Fay
Michael Feicht
Cari Feiler Bender and
Rodd Bender
Carolyn Ferber
Winifred Fessenbecker
Judi Field and Martin Getzow
Leila Finkelstein
Ross Firestine
Catherine Fischer
John Fitch
Paul Fitzgerald
Jean Fleschute
Karen Flora
Lena Flower
Moriah Ford
Tammy Forstater
Robert Fossler
Kenneth Frank
Ms. Judy Frank
Allyson J. Frank
Allan P. Freedman and
Amy Rappaport
Leslie Freeman^
Paulette Freeman
Michael and Helene Freidman
Lori Friel
John Fuchs-Chesney
Stephanie Fuller
Valerie Fusco
Richard J. Gaglianese
Anne Galbally
Judy Galgon
Eileen Gallagher
Nacole Gallagher
Ofelia Garcia
Matthew and Marie Garfield
Kathleen Garza
Marianne Geiger
Leslie Gerhart
Eric Gerstel
Mark Gibbons
Ms. Sandra Gibson
Blossom Gica
Alvin Gilens
Timothy Gilboy
Alvin Gilens
Connie Giordano

Mary Kate Glenn
Vince Goffredo
Daphne Goldman
Mary Goldman
Julia Goldstein
Mr. and Mrs. Bernard D. Goodman
Juanita Goodman-Gathright
Marsha Gordon
Bob and Jan Goren
Marylyn Goutmann
Mary Graham
Rick and Sharon Graham
Beth Grandizio
W. John Grant
Anna and Jerry Green
Cheryl and Jon Green
Nate Green
Alan and Sara-Ellen Greenberg
Ms. Grace E. Grillet
Sara Grimes-Donohue
Barbara Gross
Jonathan Greene
Adele Aron Greenspun
Paul and Terry Guerin
David and Myra Gutin
Bill and Debbie Haggett
Charlie Haines
Sondra Haley
Carly Hall
Emma Halpert
Eileen Hannan
Ms. Tonda Hannum DiPasquale
Mary Kate Harkins
Christiana Harkulich
Judy and Palmer Hartl
Karen Hassett
Ann Hausmann
Catherine Hawkes
Beverly Hayden
Jacquelyn Heiart
Joan and Richard Heller
Irene Hempstead
Susan Hendricks
Angela and Michael Hennessey
Jessica Hilburn-Holmes
Kylie Hill
Mike Hinkson
Larry Hirschhorn
Jeanne HiSey
Mary Beth Hoban
Amy Hodgson
Michel Hoessly
Cindy Hoffman
Morton and Lois Joy Hoffman
Amy Hoffmaster
Dr. and Mrs. Bentley and
Clara Hollander
Marie Horchler
Trevor Horst
Paul Howard
Kelsey Howarth
Linda Howell
Lauren Hughes
Pamela Hunsberger
Charles and Elaine Huntoon
Dave F. Huting
Joan Ivanoski
Rhonda Jackson

Thank You to Our Supporters

Kathy Jacoby
John W. James
Barbara Jamison
Drs. Anthony and Estelle Chun
Scott Jeffers
Marilyn Johnson
Sharon Jones
Susan Jones
Lauren Kahn
Philip* and Marge Kalodner
Kim Kane
Karen Kaplan^
Dorothy Kaplan
Dorothy Karhnak
Mark Karlen
Nancy Kassam-Adams
Bruce and Carol Katcher
Michele Kaufman
Mr. Rosamond Kay
Jennifer Kay
Thomas Keary
Katharine Kelmelis
Frances and Paul Kende
Nancy Kengeter
Kathryn Kenney
Susan Kershaw
Toni and Herbert Kestenbaum
Bob Kestler
Robert and Susan Kettell
Julia Kharlip
Brendan Killackey
Maureen Kilroy
Cheryl and John Kirby

Helene and Ron Klimberg
Rita Klinger
Barbara Klock
Jerry and Deena Koffler
Ellen Kopeland
Amy-Jo and Marty Koser
Arthur Kover
Stanley Krall
Garry A. Kramer
Shira Kramer
Cheryl Krause
Barbara Kreider
Heather Kreismer
Cyndy Krieger
Robin Kujan
Alan Kutner
Jon Landau
John Landreau and
Sherry Grasmuck
Andree Laney
Martin and Hannah Laufé
Sharon Lawrence
Gretchen Lea
Martha Leach
Victoria Leahy
Elena Legg
Jennifer Lentz
Sara Leonard
Maria Lerman
Ruth Lesser
Todd Levin
Ben Levine
Rafael Levites

Wendy Liebling
Kathy Linaugh
Robert Linblad
Daniel Linehan
Nathan Link
Victoria Lipoff
Kathleen Locker
Debbie Long
Richard Lopez
Jane Issacs Lowe
Timothy Lowry
Karen Lubert
Edward Lundy and Debra Reiff
Robert and Patricia Lynam
Terri Lynch
Irene Mack
Mary Lynn MacKenzie
Ann Malcolm
Tina Manco
Jamie Manning
The Manitone Family
Krista Mar
Ms. Bonnie Maradonna
Bob and Sue Ann* Marburg
Nicole Martz
Thomas Massimiani
Barbara Matteucci
William Maurer
Bill Mayes
Amy McCann
Maura McCleneon
Maria McCormick
Bernadette M.



*Visit us at 110 Market St. Old City Philadelphia
or Order online ShaneCandies.com*

Thank You to Our Supporters

Marie McCullough
Melissa McDaniels
Vincent McDevitt
William and Tina McDonnell
John and Wendy McGeehan
Jim McGorman
Kathleen McGrann
Anne McKenna
Max McKenna
Judith McLaughlin
Jane McLaughlin
Terrence McMahon
John McNulty
Michael McShane
Marianne Mellinger
Wendi Meltzer
Robert Mercadante
Vincent Meredith
Anne Michel
Bruce Miller
Barbara Miller
Diana Miller
Steve and Joyce Miller
Lina Minicucci
Elisa and Dom Minni
Catherine Minnis
Kristin Minot
Jack Miszencin
Donna Mitchell
Nazinin Moghbeli
Philip Monagan
Jackie Morrill and Mike Donahue
Ann Mintz and Clifford Wagner
Tina Morrison, In Honor of Flynn
and his senior year
Peggy Morrison
Brad Moss and Laurie Gottlieb,
In Honor of Harvey Swedloff
David N. and Laurel S. Mosteller
Phanerrica Muhammad
Susan Muller
Theodore and Theresa Munz
John Murga
Peter Murphy
Dr. Susanna Nazarian
Scott Neifield
Claiborne Newlin
Donna Nini
Sylvia Nisenbaum
Raymond Nolen
Delinda Norrid
Jeannette and Daniel Norris
Laurie Ohayon
Jonathan Offenkrantz and
Deborah Gordon
Hannah Olanoff
Jeanne Omans
Eric and Julie Orts
Audrey Owen
Hedra Packman
Allison Parks
Steven Peitzman
Ronee Penoi
Jane G. Pepper

Lisa Perronne
Jacqueline Perry
Timothy Persico
Jill Perugini
Mr. Scott Peterman
Suzanne Petruzuel and Bob Pisani
Bill Pfeifer
Melissa Picknell
Lucille Pilling
Marcia Pizer
Ron Plawecki
John and Victoria Podolski
Theodore Politis
Al Politowski
Audrey Porter
Judy Pote
Lawrence Powell
Dr. Tom and Candace Pratt
Cathy Pregmon
Frank and Patricia Preston
Mike Pulsifer
Diana Quattrone
Justin Quigley
Ms. Laura Raines
John Ramsaur
Brian N. Rath
Catharine Randall
Timothy and Joyce Ratner
Abi and Craig Reed
Kenneth Richman
Len Rieser
Bradford Riley
Richard Ritunnano
Angela Roach
Mary Ann Robinson
Matthew Robinson
Corinn Rocker
Ellen and Ralph Rosen
Ellyn Rosenfeld
Adam Rosenthal
Julia Rosenzweig
Carole Roskoph
Libby Rosof and Murray Dubin
Richard Ross
Ashley Ross
Clara Ross
Enid Krasner and Alan
Rothenberg
Lynn and Michael Rothman
Cynthia Rowe
Marie Ruddell
Bernard and Barbara Ruegauer
Andy Rusnak
Amy and Mitch Russell
Stephen and Linda Russell
John Ryan
E. Ruth Sachs
Patricia Sack
Dawn Salmon
Cynthia Samuels
Mike and Mary Kay Sansone
Roberta Sampson
Carlos Santos
Lee Sargrad

Lane Savadove
Jean Sbarge
Dori Clarke
Karyn L. Scher
Titia Scherpbier
Anna Schifrin
Amber Schlesman
Robert Schlosser
Bobbie and Al Schmidt
Peter Schmitz
Ms. Adeline Schultz
Ms. Theresa Scott
Gail Scott
Patricia Scott Hobbs
Hideko Secrest
Annilee Seitchick
Julie Senko
Rich Sensenbrenner
William Shafer
Kathy and Peter Shea
Tripp Shenton
Shruti Shetty
Vera Shevchenko
Lisa Shiota
William Shoff
Charlotte Sibley
Robin Siegel
Stephanie Sigal
Don Silver
Judith Silverman
Mary L. Silverstein*
Annette Simiriglia
Wystan Simons
Joseph Sipala
Judith Skillings
Carleene and David Slowik
Catharine Slusar
Dennis Raymond Smeal
Bruce and Penny Smith
Carol Smith
Lillian Smith
Taylor Smith
Stephanie Snyder
Paula and Mark Solomon
Vicki Solot
Margaret R. Spencer
Usha Srinivasan
Catherine Staples
Elizabeth Sarrantino
Susan Steigman~
Elliot Sterenfeld
Steve and Judy Stern
Nicole Stevens
Steve and Judy Stern
Bonnie Stone
Louise and David Strawbridge
Elan Strominger
Andrew Swank
David Swartz
Dr. Dolores Szymanski
Matthew Taberski
Charles F. Tarr
Rick Terkowski
Kelly Thomas

Look around. Want to reach this audience? Advertise in our upcoming stagebill.

For more information on custom packages, please contact Michel at mmanzo@manzomediagroup.com
or Kim at krichards@manzomediagroup.com

Thank You to Our Supporters

Katie Thomas
Mary Jane Thompson
William Thompson
Ruth Thornton
Edward and MaryAnn Tierney
Louis Tillery
James Timberlake and Meg Rodgers
The Tobias Family
Anna Coxe Toogood
Ann Trail
Andy Travaglia
Victoria Turlik
Dagny Veitch
David Velazquez
Valeria Vasilevski
Cynthia L.Vena
Anthony Vitullo Jr.
Deborah Volkmer
Harriet Waanders
Joy Wadleigh and Richard Hudson
Emily and Charles Wagner
Lorimar Wagner
John Walber
Laura Waldrop
Paula and Lawrence Wallach
Tuesday Wallington Grimes
Sean Walsh
Jane Waltman
Jeffiner Ware
Tom and Beth Warmes
Deanne Warner
Robin Warsaw

Ellen Watson
Barbara Weidner
Harri Weinberg
Howard Weiner
William Weir
Amanda Weisel
Lenore Weissberg
Shannon Welsh
Ellen Welson
Suzanne L. Weston
Cynthia Weyand
Patrick J. and Gina Whalen
Marsha Wheeler
Robert C. Wickline
Thelma Wigod
Joanne Wigod
Annmarie Wileczek
Gwendolyn Wiley
Carol A. Williams
Michelle Williams
Dawn Williams
Elizabeth Williams
Bob Willoughby
Jim Wilson
Lydia and Gary Winderman
Kim Winnick
Jane Winski
Marcia Witlin-Basickes
Susan Walbransku
Stephen Wood
Keither Yaller
Albert Yan

Kuna Yankell
Linda Yarlot
Lee Yeash
Barbara Yorke
Kristin Yorke
Anna Young
Kathy Zager
Hilary Zankel
Mary Ziegler

** Denotes a deceased supporter
+ Denotes a gift of goods or services
^ Includes a matching gift
~Includes a monthly gift
This list represents gifts made
through March 25, 2026*

**A NEIGHBORHOOD BISTRO
NESTLED IN THE HEART
OF OLD CITY**

LUNCH | DINNER | BRUNCH
52 S 2ND STREET



10% OFF FOR ARDEN PATRONS

ROYAL BOUCHERIE



Thank You to Our Supporters

Gifts in Memory Of...

ALICE AND MARIE

Anonymous

JOSEPH V. AMBROSE

Anonymous

ALFONSO ANDRADE

Gabriela Andrade

MICHAEL BAILIN

Sally Bailin

TOM BEAM

Carol Beam

DR. DONALD BECKIE, PHD

Peter and Laura (nee Beckie) McQuaid

SHEILA CALLINAN

Anonymous

ELIZABETH P. CORNMAN

Anonymous

ERNEST CUFF

Ellen Deacon

MARJORIE DICKEY

Rhonda Dickey

DONALD F. DUCLOW

Niels Johnson and Christina Maffa-Johnson

MARCELLA E.

Bernadette M.

STEPHEN J. GARLAND

Katherine Davies and The Garland Family

DONALD GREEN

Scott and Lynda Glading
Marianne Green

JAMES J. HANEY III MD

Ben and Patricia Haney

BARBARA HAWTHORNE

Anonymous

LUCKY HERTFELDER AND

SHARON CLAUSON
Heidi and Trudi Hertfelder

MILT AND ROZ KLEIN

Ken, Eva and Aaron Klein

MOM, EXTROADINAIRE

Bernadette Koller

JOHN KOSCELNIK

Valerie Koscelnik

SHEILA KUTNER

Dr. Beverly Emanuel
Alan Kutner

WALLY LOEB

Charles and Elaine Huntoon

HOWARD MAGEN

Cirel Magen

LEE MARKS

David and Eileen Abels
Sheryl and Allen Bar
John Fuchs-Chesney
Robert Craig
Stephen Craig Family
Greenberg Traurig- Northern Virginia
Mr. and Mrs. Bernard D. Goodman
Tim and Renee Jessell
Lisa and Perry Kahn
Rachel and Will Kipnes
Joanna Kipnes and Family
Scott Neifeld
Peach
Suzanne Seger
Leonard and Nancie Velick
Jamaine Yarborough

TOM MCCARTHY

Robert Craig
Carol DeLuca
Nancy and Bob Elfant
Karen Hassett
Carol Kelley
Jamie Nikithser
Bob Perdick and Lenny Smith
Jill Perugini
Vera Shevchenko
Dawn William

MINION

The Vander Woude Family

WESLEY MONTGOMERY AND SUE WINGE

Anne Halkedis

BRUCE AND MARYBETH MUCKLEY

Lauren Muckley Campbell

MIRIAM CHERYL NORRIS

Jeannette and Daniel Norris

KRISTIN OSGOOD LAMELAS

Diane Hlywiak

GEORGE AND DOLORES OTTINGER

Stephen and Kathy Thompson

CLIFFORD PEARLMAN

Lynn Marks

RICHARD RAGONESI

Lynn and Michael Rothman

RICHARD REPETTO

Dan Rothermel and Michael Hairston

ANNIE RICHARDSON

Anonymous

MAITLON RUSSELL

Linda McAleer

ANURADHA SEEKAY

Aneira Puttaswamy

GEORGE R. SZYMANSKI, ESQ.

Dr. Dolores Szymanski

NANCY STEWART LITWAK

Miranda Goot

GERI TALLONE

Scott and Lynda Glading

MIKE TINKER

Janice Burgh

WALT VAIL

Jason Vail

PETER WALDRON

Rich and Lolly O'Brien

BETTY E. WATERS

Anonymous

LESLIE F. WELSON

Ellen Welson

CASEY ZEFF

Eileen Heisman and Marty Tuzman

Gifts To Named Funds...

NAMED SEATS THIS SEASON

George Ahern
Jill Fisch and John Gassenheimer
Blossom Gica
Joan Tishgart

ANDREA MENGEL FUND

Doug and Kristin Berman
Derick Dreher
Independence Foundation
Susan Sherman

ANN B. MCNAMEE FAMILY THEATRE FUND

Dennis and Louise Buckley
Dennis Rodkin
Melissa Rodkin
Robert and Joan McLaughlin

THE DR. MINDY GOLDBERG ROSE INTERNSHIP FUND

Dinah Abelman, In Honor of Charlie Rose
Nancy and Bob Elfant
Equitable/ AXA Foundation
Bruce and Sherrie Greenfield
Charles Rose
Heidi and Mitchel Rubin,
In Honor of Nathan Dorman
Dorothy Sheridan

THE BERNARD AND CAMILLE ROSENBERG FAMILY THEATRE FUND

Bernard and Camille Rosenberg

HEY, PARENTS! COME PARTY WITH US

ARDEN THEATRE COMPANY PRESENTS

Seasons of Love

AN UNFORGETTABLE GALA
CELEBRATION INSPIRED BY *RENT*!

*featuring a pre-show Party,
Cabaret Concert, and Silent Auction
with amazing prize packages
that meet every budget
and interests.*

MON, JUNE 1 @ 8PM

For event information and tickets,
visit ardentheatre.org/seasonsoflove

**NO DAY BUT
TODAY!
Get Tickets
or Register
for the Silent
Auction!**

Auction bidding begins May 18
SCAN THE QR CODE OR VISIT
seasonsoflove.fundraider.bid
TO REGISTER FOR THE AUCTION



ALL PROCEEDS BENEFIT THE ARDEN THEATRE COMPANY

Board and Committee Members

Board of Directors

Michael A. Donato, *President*
Rayenne A. Chen, *Vice President*
Dr. Valerie Harrison,
Vice President
Michael S. MacFarland,
Treasurer
Richard L. Maimon, *Secretary*
Dr. Lawyer Chapman
Kelly Colarelli
Anne Cook
Robert Elfant
Nancy Elfant
Elizabeth A. Fernández-Viña
Elizabeth H. Gemmill
Jennifer Harmelin
Richard Harris
Valerie I. Harrison
Ann Marie Horner
Holly Kinser
Dr. Saifuddin T. Mama
Amy L. Murphy
Terrence J. Nolen
Brian Pinheiro
Hon. Rosalyn K. Robinson
Charles H. Rose
Camille Rosenberg
Monica Rosenthal
Genvieve Shields
Lee van de Velde
Steve Wolfson
Diane Dalto Woosnam
Ellen Yin

Board Executive Committee

Michael Donato, *Chair*
Michael MacFarland
Rayenne A. Chen
Robert Elfant
Jennifer Harmelin
Dr. Valerie Harrison
Holly Kinser
Richard L. Maimon
Genvieve Shields
Lee van de Velde

Finance Committee

Michael MacFarland, *Chair*
Juan De León Domenech
Elizabeth Gemmill
Ann Marie Horner
Dan Hilferty
Harvey Swedloff

Board Development Committee

Rayenne Chen, *Chair*
Valerie Harrison, *Chair*
Michael Donato
Robert Elfant
Holly Kinser
Saifuddin T. Mama

Board Development Committee (cont.)

Lee van de Velde
Diane Dalto Woosnam

Personnel Committee

Michael Donato
Elizabeth H. Gemmill
Richard Harris
Michael S. MacFarland
Charles H. Rose

Engagement Committee

Jennifer Harmelin, *Chair*
Genvieve Shields, *Chair*
Lee van de Velde
Anne Cook
Elizabeth Fernández-Viña
Camille Rosenberg
Hope Yursa

Facilities Committee

Richard L. Maimon, *Chair*
Mike Green
James Kronzer
John J. McCawley
H. Hetherington Smith
Chris van de Velde

Equity, Diversity, and Inclusion (EDI)

Rayenne Chen
Anne Cook
Joy L. De Jesús
Robert Elfant
Kash Goins
Richard Harris
Dr. Valerie Harrison
Zuhairah McGill
Amy L. Murphy
Bi Jean Ngo
Terrence J. Nolen
Hon. Judge Rosalyn
Robinson
Clayton Tejada
Orelí Uzdavinis

Young Friends Committee

Chelsea Beytas
Kathleen Johnson
Alexa Josaphouitch
Meredith McGovern
Jenny Morrison
Mandie Spindler
Diana Zalewski

Become a MONTHLY DONOR

to help sustain our daily work throughout the year!

This consistent support provides core financial stability to help keep the lights on, employ local theatre professionals, and reach even more students throughout the Greater Philadelphia area.

Becoming a monthly donor is the easiest way to increase your impact! Simply tell us how much you would like to donate monthly in the link below and we'll take care of the rest. A recurring donation of any amount helps:



**\$10
a month**

keeps the lights on during a full day of performances.

Scan to donate:

ardentheatre.org/donate



Staff

Artistic	Producing Artistic Director.....	Terrence J. Nolen
	Associate Artistic Director.....	Jonathan Silver
	Artistic Assistant.....	Nick Hatcher
	Commissioned Playwrights.....	Kash Goins, Robi Hager Rogelio Martinez, Iraisia Ann Reilly, James Ijames
Administrative Management	Managing Director.....	Amy L. Murphy
	General Manager.....	Clayton Tejada
	Business Manager.....	Paola Cruz
	Audience Services Manager.....	Tanner Richardett
	Facilities and Office Manager.....	Larry Brooks
	Arden Professional Apprentices.....	Sara Alvidrez, Hardik Gupta, JT Hawkes Amelia Kovach, Madison Luckey, Fable Rowell
Marketing	Director of Marketing and Communications.....	Mike Hogue
	Communications Manager.....	Aseal Saed
	Marketing Manager	Alexa Perillo
	Marketing and Group Sales Associate.....	TJ Harris
	Dr. Mindy Goldberg Rose Intern.....	Emily Lathers
	The Sue Wigne Intern of Villanova.....	Gianna Lauria
Publicist.....	En Route Marketing	
Development	Director of Development.....	Jessica Abel
	Development Coordinator.....	Tylar Benedetto
	Manager of Institutional Giving.....	Gwyn Garrison
	Manager of Individual Giving.....	Orelí B. Uzdavinis
Education	Director of Education.....	Lauren Diesch
	Education Outreach Manager.....	Josh Thorps
	Arden Drama School Manager.....	Elise D'Avella
	Education Associate.....	Francine Odri
	Teaching Artists.....	TJ Harris, Jessica Money, Julianna Babb, Cindy Paul, Andrea Rose Cardoni, Zoe Hollander, Katherine Perry, Eliana Pinckney, Gina Giachero, Jake Collins, Jordan Hunter-Fidalgo, Lexi Schreiber, William Daniels, Lydia Hassell, Abby Weissman, Leah Cohen, Campbell O'Hare, Ryan Touhey, Lize Meisenzahl, Curtis Harris, MK Prophett, Gabe Moses, Kevin Muchetti, Lauren Krigel, Maddy Gillespie, Aurelien Eulert, Evan Hilborn
Front of House	Box Office Manager.....	Jason Blacketer
	Assistant Box Office Manager.....	Cam Adams
	House Manager.....	Skyler Gonzalez
	Front of House Associate.....	Catey Midla
	Front of House Lead	Emily Hernandez
	Front of House Assistants.....	Aaron Szabo, Adiah Hicks, Becky Fleckner, Chelsey Gaskins, Dean Cousineau, Em Brandon, Glynnis Nadel, Jael Hicks, Jenny Glickman, KC Casey, Laura Duffy, Leanna Dankel-Paylor, Lillian Redding, Liv Hershey, Mads Klemm, Margaux Cattelona, Morgan McNulty, Victoria Silva, Zoe Hollander
Production	Production Manager.....	Kate Nelson
	Technical Director.....	Evan Lewis
	Assistant Technical Director.....	John Winter
	Electrics Supervisor.....	Martin Stutzman
	Sound Supervisor.....	John Kolbinski
	Music Supervisor.....	Robi Hager
	Costume Shop Manager.....	Bridget Brennan
	Assistant Costume Shop Manager.....	Mae Merkle
	Properties Supervisor.....	Kelly McLaughlan
	Charge Scenic Artist.....	Brit Bannon
	Production Assistant.....	Ta'Liyah Thomas
	Assistant to the Stage Manager.....	Amelia Kovach
	Audio Engineer.....	Larkin Ethridge
	Company Safety Managers.....	Clayton Tejada, Jonathan Silver
	Electrics Programmer.....	Zivia Lichtenberg
Dr. Mindy Goldberg Rose Intern.....	Joey Nolan	

CREATIVE REAL ESTATE FOR CREATIVE PEOPLE



The CCSJ Team is proud to continue our *Support the Arts Initiative*, donating to local performing arts organizations for every closing. Whether you're on-stage, behind the scenes, or in the audience, choose the REALTOR[®]s who support our arts community.



JAMES SUGG

REALTOR[®]

267.303.2827

sugg@ewrhomes.com



BENJAMIN CAMP

REALTOR[®] & CCSJ Team Leader

610.220.8550

ben@ewrhomes.com

THESTELLARCHOICE.COM | 215.893.9920

2000 PINE ST, PHILADELPHIA, PA 19103

Elfant &
Wissahickon
- REALTORS[®] -