

ARDEN THEATRE COMPANY PRESENTS

GOOD BONES

by James Ijames
Directed by Akeem Davis



Arden
THEATRE CO

JAN 22 - MAR 15

On the Arcadia Stage

Production Sponsor:



Honorary Producers:

Hether and Don Smith
Lee and Chris van de Velde

2026/27

LEAP OF FAITH SUBSCRIPTIONS are now available!

Order by March 1 for the lowest prices!

Take the "Leap" with us and secure your subscription for all five shows in our 2026/27 Mainstage season. You won't know the show titles just yet. However, subscribers are the first to know when shows are ready to be announced!

SAVE UP TO \$175 OFF regular ticket prices, receive priority seating, make easy ticket exchanges, and more.

**SUBSCRIBE TODAY AND
SAVE UP TO 50% OFF
REGULAR TICKET PRICES!**



Philadelphia Magazine's
Best of Philly® 2024
Best Theater Subscription!



To Subscribe:
visit our Box Office
call 215.922.1122
ardentheatre.org/leap-of-faith



The Mountaintop (2025), August Willson's *King Hedley II* (2025), *Intimate Apparel* (2024), *POTUS* (2024), *Holy Grail of Memphis* (2025), *RENT* (2025). Photos by Ashley Smith, Wide Eyed Studios. *Falsettos* (2025) Photo by Mark Garvin.

WELCOME

From the Producing Artistic Director



Welcome to the Philadelphia premiere of James Ijames' *Good Bones*. We have been working with James for over seventeen years as an actor and a director. Last season, James directed the magnificent production of August Wilson's *King Hedley II*. How wonderful to be welcoming James' work to our stage as a playwright – in fact, a Pulitzer Prize-winning playwright whose work is now being produced by theatres across the country and beyond.

There are three James Ijames plays being produced by Philadelphia theatres in the next few months. In addition to Arden's *Good Bones*, the Wilma is producing *The Spectacularly Lamentable Trial of Miz Martha Washington*, and Philadelphia Theatre Company is producing his newest play, *Wilderness Generation*. Get some friends together and make your own James Ijames theatre festival! This is an unprecedented event for theatre-lovers, and if you haven't been to the Wilma or Philadelphia Theatre Company recently, this is a great opportunity to check those companies out.

And we are looking ahead to our work with James. The Arden is partnering with Orlando Shakes to co-commission James Ijames to produce a new play based on Zora Neal Hurston's *Their Eyes Were Watching God*. We'll be working with Orlando Shakes, which is located just outside of Eatonville, Hurston's hometown and the setting for the novel, to support James as he develops this exciting new play. Stay tuned, we'll be sharing more information about future readings of the script and our planned production, hopefully as part of the Arden's 40th anniversary season.

Until then, enjoy *Good Bones*, and be part of this Philadelphia artist's remarkable journey. With your support, Philly theatre will continue to grow and thrive. Imagine what Philadelphia artists can do!

P.S. – Want to see James Ijames' other productions at the Wilma and Philadelphia Theatre Company this spring? You can purchase a 2-show Citywide James Ijames pass to see both productions at a discounted rate. For more information, visit the Philadelphia Visitors Center's TKTS booth in-person at 7th & Market, call 267-514-4758, or go online to phlvisitorcenter.com/james.

MORE GREAT STORIES AWAIT YOU!



ROMEO AND JULIET

By
William Shakespeare

Directed by
Amina Robinson

MARCH 5 - APRIL 5



DEAR EVAN HANSEN

Book by
Steven Levenson

Music and Lyrics by
Benj Pasek & Justin Paul

Directed by
Terrence J. Nolen

MAY 21 - JUNE 28

Join us for our
remaining shows this
season. Turn your ticket
from **Good Bones** into a
subscription and **SAVE!**

To Learn More:

Scan the QR Code

Visit our Box Office

Call 215.922.1122



Experience more nights that move you.

A Message from our Production Sponsor



While Fox Chase Bank Charitable Fund has supported a wide range of Arden productions over the years, we are especially excited by the new frontier of theatre—one that empowers the Arden and its creative partners to develop new work and amplify the voices of contemporary playwrights. Few storytellers working today embody that spirit more fully than actor, director, playwright, and teacher James Ijames. We first met him on the Arden stage in 2011 in the production of *Superior Donuts* and have been fans ever since.

You may have seen James Ijames as an actor, experienced his work as a director, or encountered his Pulitzer Prize-winning play *Fat Ham* on Broadway or here in Philadelphia at the Wilma in 2023. This production of *Good Bones*, however, marks a new chapter: the first opportunity to experience an Arden-Ijames collaboration through one of James' own

works produced live on the Arden stage. Building on a longstanding artistic relationship, this production promises to be both powerful and deeply resonant.

The Board of Directors of Fox Chase Bank Charitable Fund is delighted to continue our legacy of support with the Philadelphia premiere of *Good Bones* at the Arden. Enjoy the show!



FOX CHASE BANK®
Charitable Fund

Tom Petro
Chairman, **Fox Chase Bank Charitable Fund**

A Message from our Honorary Producers



Whenever the Arden pops up and asks some of the regulars to sponsor a show, you usually know what the show is about. If ever there was a time that all of us would willingly take a flyer on a new play, it is without a doubt, with James Ijames. As an actor, we've seen him in *Superior Donuts*, *Romeo & Juliet*, *Three Sisters*, and as a director for Lorene Cary's *My General Tubman*, and August Wilson's *Gem of the Ocean* and *King Hedley II*. The Barrymore Committee knew what they were doing in 2011 when they spotted James and awarded him the F. Otto Haas Award for an Emerging Artist, Outstanding

Supporting Actor (in 2011 and again in 2012), and then Outstanding Direction of a Play in 2014. The list goes on and on – you'll have to look him up on Wikipedia to see the laundry list of his awards.

But what was the most fun of all was seeing him pop up with a slammer of a hit on Broadway. Philly guy hits big!! **James Ijames awarded a Pulitzer Prize and Tony nominations for *Fat Ham* on Broadway.** WOW! Such a rush to pick up the *New York Times* and see our James splashed all over the Arts section. Hometown proud doesn't begin to capture the feeling. Yeah, yeah, yeah – he's originally from North Carolina, but he came to Philly so we claim him wholeheartedly as a Philadelphia artist, and it has been an immense pleasure to watch him develop his art, acting, teaching and expand into writing and directing.

So, sit back with enormous anticipation and joy for a play that explores the very timely topics of gentrification and the growing price of the American dream.

Congratulations James, we can't wait for opening night. Well Done.

Hether and Don Smith & Chris and Lee van de Velde

A Note

From the Director



I have to tell you of my friend, Reuben Mitchell.

Depending on how long you've been taking in Philly theatre, you may know Reuben's name or have seen his work. When I got to the city in 2011 he was on ascending, establishing a name for himself as an artist and beloved community presence. In fact, Reuben and James Ijames - our playwright - went to Morehouse College together; it was James who invited Reuben to Philadelphia as a regional market where he could anchor a career in theatre. Reuben possessed a soul of light and beamed smiles at friends and strangers alike; he was funny, and silly, and so smart. He died in a motorcycle accident in November of 2012. I'll always remember the

details of that week: hearing the news, feeling it reverberate through the community, his massive funeral and finally, his memorial service at Plays & Players. The theater was packed to the brim, with standing room only. It was there that footage of Reuben was played with him explaining a workshop venture he was starting called "Reuben's Kitchen". "Why a kitchen?" he explained, "...because a kitchen is a natural place for transformation."

Every day since I've read *Good Bones* I have thought about the potency of Reuben's metaphor and the beautiful calculus that led his friend James, now a Pulitzer Prize winner, to write this powerful play discussing the very nature of transformation, set in... a kitchen. As it transforms!

I've endeavored to lead an exploration of *Good Bones* that honors the growing pains of transformation. I hope that our production can make manifest the revolutionary toll and revelatory benefit of allowing oneself to be changed by exposure to community in all its inconvenient, inauspicious and indomitable value. The play centers the notion of home and asks us all the evaluate our obligations - if any - to our roots. Does revitalization necessitate reinvention? How hard should we hang on to our old understanding of a place as it shifts? Is any policy ever beneficial enough to drown out the voices of the people? In Philadelphia - the place that our production is set and a place that is radically different from one block to another - the answers to these questions can be complicated.

I hope our production pulls you out of your seat and into our kitchen to be transformed!

Akeem Davis



Reuben (right) and I (left) in rehearsal for a Clark Park production of *Merry Wives of Windsor* in the summer of 2012.

ARDEN THEATRE COMPANY PRESENTS

GOOD BONES

by JAMES IJAMES

Scenic Designer
MARIE LASTER+

Costume Designer
TIFFANY BACON

Lighting Designer
SHANNON ZURA

Sound Designer
JORDAN MCCREE

Assistant Lighting Designer
ETHAN PAONE

Assistant Director
GABE MOSES

Stage Manager
ALEC E. FERRELL*

Directed by
AKEEM DAVIS

Production Sponsor:



FOX CHASE BANK®
Charitable Fund

Honorary Producers:
Hether and Don Smith
Lee and Chris van de Velde

Additional Support provided by:
Charlotte Cushman
Foundation

THE VIDEOTAPING OR MAKING OF ELECTRONIC OR OTHER AUDIO AND/OR VISUAL RECORDINGS OF THIS PRODUCT AND DISTRIBUTING RECORDINGS OR STREAMS IN ANY MEDIUM, INCLUDING THE INTERNET, IS STRICTLY PROHIBITED, A VIOLATION OF THE AUTHOR(S)'S RIGHTS AND ACTIONABLE UNDER UNITED STATES COPYRIGHT LAW. FOR MORE INFORMATION



Arden Theatre Company receives state arts funding support through a grant from the Pennsylvania Council on the Arts, a state agency funded by the Commonwealth of Pennsylvania.



+ Member of United Scenic Artists
Local USA 829

* Member of Actors' Equity Association,
the Union of Professional Actors and
Stage Managers in the U.S.



^ The director is a member of the Society
of Stage Directors and Choreographers,
Inc., an independent national labor union.

Cast of Characters

Travis..... Newton Buchanan*
Aisha..... Taysha Marie Canales*
Earl..... Walter DeShields*
Carmen..... Kishia Nixon*

UNDERSTUDIES

Marcus A. Brooks (Travis), Jahel Duran-Diaz (Earl), Christina Foye (Aishia), CaSandra Kay (Carmen)



Arden Theatre Company is a professional company employing members of Actors' Equity Association.
*Member of Actors' Equity Association, the Union of Professional Actors and Stage Managers in the United States.

Please check houseboards for any program changes.

Taking pictures and/or making visual or sound recordings is expressly forbidden.

Actors' Equity Association (AEA), founded in 1913, represents more than 45,000 actors and stage managers in the United States. Equity seeks to advance, promote and foster the art of live theatre as an essential component of our society. Equity negotiates wages and working conditions, providing a wide range of benefits, including health and pension plans. AEA is a member of the AFL-CIO, and is affiliated with FIA, an international organization of performing arts unions. www.actorsequity.org



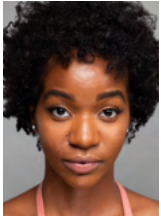
NEWTON BUCHANAN (Travis) Arden: *Holy Grail of Memphis*, *The BFG* (*Big Friendly Giant*). Regional: *This Is The Week That Is: 20th Anniversary Special* (1812 Productions); *Walden* (Interact Theatre Co.); *Primary Trust* (Philadelphia Theatre Company); *Children of The Sun* (Philly Artist Collective); *RENT*, *Othello*, *Next to Normal* (New Light Theatre); *One Man, Two Guvnors*, *HONK!* (Delaware Theatre Company); *Twelfth Night: O Lo Que Quieras*, *Romeo and Juliet*, *The Merry Wives of Windsor*, *The Merchant of Venice* (Delaware Shakespeare); *Cry It Out* (Simpatico); *Cymbeline* (Revolution Shakespeare); *A Streetcar Named Desire* (Deep Blue Theatre); *Noises Off* (Curio Theatre Company); *By The Way, Meet Vera Stark* (Second Stage Theatre). Newton is a Barrymore Award Nominated theatre artist based in Philadelphia with over twenty years of professional experience in theatre, film, and commercials. He is a co-founder of the award winning New Light Theatre Co. He's also a co-founder and steering committee member of The Black Theatre Alliance of Philadelphia (BTAP). Instagram: @newtron_bomb @newlighttheatre



TAYSHA MARIE CANALES (Aisha) Arden: *King Hedley II*, *A Streetcar Named Desire*, *No Child...* (2021 Filmed Production), *A Midsummer Night's Dream*, *La Bête*, *The Jungle Book*, *Sideways Stories from Wayside School*. Regional: *The Snow Queen*, *The Comeuppance*, *Fat Ham* (2021 filmed World Premiere), *Dance Nation*, *Romeo and Juliet*, *Passage*, *Passing Strange*, *Blood Wedding*, *When the Rain Stops Falling*, *An Octoroon*, *The Hard Problem* (Wilma Theater); *Hamlet*, *Cymbeline*, *The Merry Wives of Windsor*, *Much Ado About Nothing* (Pennsylvania Shakespeare Festival); *All My Mothers Dream In Spanish* (Azuka Theatre). Taysha is the 2018 F. Otto Haas Emerging Philadelphia Theater Artist Recipient and a three-time Barrymore Award nominee. She is a founding member of the Wilma Theater's resident acting company, the Hot House. BFA in Acting from Arcadia University. Much love to my family, especially to my two AMDs. This performance is dedicated to the Castle Hill Housing Projects in The Bronx, NY. www.tayshamariecanales.com



WALTER DESHIELDS (Earl) Arden: *Clyde's*; *A Streetcar Named Desire*. Regional: *A Raisin in the Sun* (Bristol Riverside Theatre); *Once Upon a Bridge* (Inis Nua Theatre Company); *Crumbs from the Table of Joy* (Lantern Theater Company); *Fraternity* (Theatre in the X). Education: BA English and Theatre, The Pennsylvania State University. Walter is an award-winning actor, director, and educator, and the co-founder/co-artistic director of Theatre in the X, a professional company dedicated to providing free, community-centered theatre in West Philadelphia. He currently serves as adjunct faculty at Rowan, Drexel, and Eastern Universities. Thanks to family, chosen family, and community for unwavering love and support.



KISHIA NIXON (Carmen) Arden: *The Mountaintop*, *Holy Grail of Memphis*, *The BFG* (*Big Friendly Giant*), *Clyde's*. Regional: Supporting Actor Barrymore award winner for *Glitter in the Glass*, *Sing The Body Electric* (Theater Exile) Amsterdam (Theater Ariel); *Green Eyes*, *The Strange Play* (Tennessee Williams Festival); *Say It Ain't So* (Revolution Shakespeare); *Fabulation or the Re-education of Undine*, *The Comedy of Errors* (Lantern Theater Company); *The Comedy of Errors* (Shakespeare in Clark Park); *Delaware Young Playwrights* (Delaware Theater Company); *Life is a Dream*, *Three Sisters Two* (EgoPo Classic Theater); *Upon Re-Entry*, *La Ronde* (Die Cast Collective); *A Twist of Water* (Passage Theatre Company); *Spies!! Even More Spying* (Philadelphia Fringe Festival); *Aggy the Adventurer* (Act II Playhouse). Education: BFA in Acting (Arcadia University). Kishia is happy to be back at the Arden! You can catch her at The National Constitution Center in Freedom Rising! As always, this is for you, Dad, RIP.

JAMES IJAMES (Playwright) James Ijames is a Pulitzer Prize-winning playwright, director and educator. James' plays have been produced on Broadway, off-Broadway and across the country by theatres including Orbiter 3, The National Black Theatre, The Public Theater and Steppenwolf Theatre. His awards and honors include the 2011 F. Otto Haas Award for an Emerging Artist, the 2015 Pew Fellowship for Playwriting, the 2015 Terrence McNally New Play Award, the 2017 Whiting Award, the 2019 Kesselring Prize, the 2020 Steinberg Prize, and the 2022 Pulitzer Prize in Drama for the Tony nominated *Fat Ham*. James is an associate professor at Columbia University where he serves as head of the playwriting concentration.

AKEEM DAVIS (Director) is an actor and director, incredibly excited to be making his directorial debut at the Arden. Arden credits include: *The Mountaintop*, *King Hedley II*, *Intimate Apparel*, *The Lehman Trilogy*, *A Streetcar Named Desire*, *Gem of the Ocean*, *A Doll's House* (Barrymore Award for Outstanding Supporting Performance in a Play). Regional Directing credits include: *Raisin in the Sun* (Pennsylvania Shakespeare Festival) and *Gruesome Playground Injuries* (Bryn Mawr College). A graduate of The Florida State University (2009, Bachelors in Humanities), Akeem is a Helen Hayes nominated actor and winner of the F. Otto Haas Award for Emerging Philadelphia Theatre Artist. Akeem is a proud member of the artist company at People's Light. Much gratitude to the entire Arden staff. Eternal admiration, respect and appreciation to James. Love to Tay and Amias. For Ash.

GABE MOSES (Assistant Director) Arden: *RENT*, u/s in *The Lehman Trilogy*, 2020 Virtual Production of *A Midsummer Night's Dream*. Regional: *A Christmas Carol*, *A Raisin in the Sun*, *Peter Panto* (People's Light); *Lovesong* (Inis Nua Theatre); *The Worst Cafe in the World* (Tiny Dynamite); *Ragtime*, *Crazy for You*, *Much Ado About Nothing*, *Henry IV Parts 1 & 2* (Pennsylvania Shakespeare Festival); *Noises Off!* (Delaware Theatre Company); *Hair* (Cortland Repertory Theatre). BA in Theatre from DeSales University. Love and thanks to Mom, Jeremiah, and CaSandra Kay.

ALEC E. FERRELL (Stage Manager) Arden: *RENT*, *Holy Grail of Memphis*, *Intimate Apparel*, *Once on This Island*, *Ladysitting* (World Premiere), *What the Constitution Means to Me*, *The 25th Annual Putnam County Spelling Bee*, *Clyde's*, *Every Brilliant Thing*, *Into the Woods*, *The Snowy Day and Other Stories* by Ezra Jack Keats, *No Child...*, *My General Tubman* (World Premiere), *Indecent*, *Gem of the Ocean*, *Once*, *Fun Home*, *Toni Morrison's The Bluest Eye*, *TouchTones* (World Premiere), *Gypsy*, *The Legend of Georgia McBride*, *The Secret Garden*, *Metamorphoses*, *Macbeth*, *La Bête*, *Three Sisters*, *Parade*, *A Raisin in the Sun*, *Next to Normal*, *August: Osage County*, *Ghost-Writer* (World Premiere), *Blue Door*, *My Name is Asher Lev* (World Premiere). Regional: Adirondack Theatre Festival, Theatre Horizon, Trinity Repertory Company, Eugene O'Neill Theater Center. International: *[untitled project] #213* (Edinburgh Festival Fringe). Proud Member of AEA, SMA. Love and thanks to the family!

Who's Who

MARIE LASTER (Scenic Designer) Arden: *What the Constitution Means to Me*. Regional: *Dutchman and the Slave*, *Ghetto Gods in Divineland* (Passage Theatre); *Fly Me to the Moon*, *Endlings* (Hedgerow Theatre); *Chicken & Biscuits* (TheatreSquared); *American Moor* (Lantern Theater); *All My Mothers Dream in Spanish* (Azuka Theatre and Teatro del Sol); *Sandblasted* (Theatre Horizon); *Untitled* (Inis Nua Theatre). Education: Philadelphia University, Bachelor of Architecture. Marie enjoys channeling her creative energy through the scenic design process. marielasterdesign.com

SHANNON ZURA (Lighting Designer) Shannon is excited to be back at the Arden where she most recently provided the lighting design for *School Girls; Or, the African Mean Girls Play*, and is a former Arden Professional Apprentice (inaugural class, 1993/94). In addition to being a professional lighting, sound, and scenic designer, Shannon is Professor, Chair of Theater and Dance, and Coordinator of Design and Technology at Ursinus College. Credits include designs for InterAct Theatre Co., Arden Theatre Co., Inis Nua, Delaware Theatre Co., Lantern Theater Co., Azuka Theatre, Idiopathic Ridiculopathy Consortium, Portland Stage Co., Opera Maine, and Stonington Opera House Arts, among others. She collaborated with Christensen Lighting on an award-winning lighting design for the Weiss Energy Hall at the Houston Museum of Natural Science. Shannon holds an M.F.A. from Temple University.

TIFFANY BACON (Costume Designer) Arden debut. Regional: Costume Designer *Fraternity*, (Theatre in the X); Costume Designer *Dutchman & The Slave*, (Passage Theater); Costume Designer *Fat Ham*, (Wilma Theatre); Costume Designer *American Moor*, (Lantern Theatre Company); Costume Designer *Lady Day at Emerson's Bar and Grill*, (Philadelphia Theatre Company, Geva Theatre); Costume Designer *One Monkey Don't Stop No Show*, (Theatre in the X); Costume Designer *American Fast*, (InterAct Theatre Company); Costume Designer *Hymn*, (Inis Nua Theatre Company); Costume Designer *The Light*, (Theatre Exile); Costume Designer *Father Comes Home from the Wars*, (Quintessence Theatre Group); Costume Designer *Dreamgirls*, (Theatre in the X) Education: Temple University, BA Radio-TV-Film. I'm grateful for the opportunity to work with Akeem and The Arden on this production. www.costumemotiff.com

JORDAN MCCREE (Sound Designer) Arden: *The Hobbit*, *The BFG* (Big Friendly Giant), *Backing Track*, *Snowy Day*, *My General Tubman*, *An Iliad*. Off Broadway: *A Woman Among Women* (New Georges/Bushwick Starr); *Grief Hotel* (Clubbed Thumb/The Public Theater); we come to collect: a flirtation with capitalism (*The Flea*). Regional: *Half-God of Rainfall*, *Good Person of Setzuan*, *Eternal Life Part I*, *Fat Ham*, (2021 World Premiere) (Wilma Theater); fallawayinto: *corridors of Rememory* (Ninth Planet), *The Comeuppance* (Woolly Mammoth/Wilma Theater), *Cost of Living* (Philadelphia Theatre Company) Film/Television: *The World Takes* (short film, Eight Flow Studio), *The Karamazovs* (Village Park Productions). They were one of the 2022 grant recipients to the 1/52 Project. They are also a member of Philly-based, Barrymore Award-winning, hip-hop collective, ILL DOOTS. Their album, *Divine Transmission*, is available everywhere.

TERRENCE J. NOLEN (Producing Artistic Director) is Co-founder and Producing Artistic Director of Arden Theatre Company. Favorite Arden productions include all-Philadelphia casts of *The Lehman Trilogy*, *August: Osage County*, *Death of a Salesman*, and *Hedda Gabler*; and such musicals as *Next to Normal*, *Sweeney Todd: The Demon Barber of Fleet Street*, *Pacific Overtures*, *Violet*, and *Caroline, or Change*. Terry directed the inaugural production of Arden Children's Theatre, *Charlotte's Web*. He has directed eight world-premiere plays by Michael Hollinger, three by Dennis Raymond Smeal, three by Michael Ogborn, two by Rogelio Martinez, and Bruce Graham's *Something Intangible*. Terry has been nominated for 27 Barrymore Awards for his directing work at the Arden and received awards for *The Baker's Wife*; *Sweeney Todd*; *Opus*; *Winesburg, Ohio*; *Assassins*; *Something Intangible*; and *Fun Home*. He directed Michael Hollinger's *Opus* at Primary Stages in New York and was nominated for a Lucille Lortel Award for Outstanding Director. His short film *The Personal Touch* was nominated for an Emmy Award.

Who's Who

AMY L. MURPHY (Managing Director) A Philadelphia native, Amy co-founded the Arden in 1988 with Terrence J. Nolen and Aaron Posner. She is especially proud of the Arden Professional Apprentice program and its contribution to the Philadelphia cultural community. A graduate of Susquehanna University, Amy received its first-ever Young Alumni Achievement Award. She completed the Executive Program for Non Profit Leaders- Arts which is a joint program of the Stanford Graduate School of Business Center for Social Innovation and National Arts Strategies. Amy has served on the Board of the Greater Philadelphia Cultural Alliance and Theatre Philadelphia, as well as the Executive Board of League of Resident Theatres. In addition, she has served on panels for the National Endowment for the Arts, the New Jersey State Arts Council, Philadelphia Cultural Fund, Arts & Humanities Arts Council of Montgomery County and Theatre Communications Group. Amy was named a Hepburn Fellow 2008-9 by the Katherine Houghton Hepburn Center at Bryn Mawr College.

ARDEN THEATRE COMPANY Founded in 1988, Arden Theatre Company is dedicated to bringing to life great stories by great storytellers—on the stage, in the classroom, and in the community. We create and produce new work through the Independence Foundation New Play Showcase. The Arden Professional Apprenticeship program trains future theatre leaders, and Arden Drama School classes teach children and teens about the craft of making plays. Our access program, Arden For All, makes our work available to the entire community through subsidized tickets and books for economically disadvantaged young people, and our Arden Arts Scholarship Fund provides scholarships for Arden Drama School classes and camps. The Arden has received 13 *Philadelphia Magazine* “Best of Philly” Awards, the Arts & Business Council’s Arts Excellence Award, six *City Paper* “Reader’s Choice” Awards, four *Philadelphia Inquirer* “Theatre Company of the Year” citations, 77 awards and 456 nominations from the Theatre Philadelphia’s Barrymore Awards for Excellence in Theatre, and was named “Best Theatre Company” by *Philadelphia Weekly* in 2009. Arden Theatre Company, a professional, nonprofit 501(c)(3) theatre company, is a member of the Theatre Communications Group, the League of Resident Theatres, Greater Philadelphia Cultural Alliance, Philadelphia Convention and Visitors Bureau, and Old City Arts Association.

Accessibility Services



Accessible Seating & Seating Requests

Removeable seats for wheelchairs & Accommodations for comfort, mobility, and hearing or vision needs.



Caption Glasses (CG)

Wearable, customizable closed captioning glasses. Available starting Tuesday, February 3.



Assistive Listening Devices (ALDs)

Amplification of all onstage sounds. Available with headphones or a t-coil neck loop.



Large Print Programs

Enlarged-text printed programs for low-vision patrons.



Open Captioning (OC)

Text display of all dialogue and sounds. February 20 at 7pm & February 21 at 2pm



Audio Description (AD)

Live verbal commentary of all visual elements. February 20 at 7pm & February 21 at 2pm



KultureCity Sensory Tools

All Arden staff are Sensory-Friendly trained. Quiet Area, Social Stories, and Fidgeting Tools available.



Service Dogs

We welcome patrons with Service Dogs to attend our performances.

Visit ardentheatre.org/plan-your-visit/accessibility for more details about our services and offerings.

2025/26

DINING PARTNERS

Restaurants in Old City and surrounding neighborhoods are ready to welcome you!
We recommend these restaurants that support the Arden.

Café Tolia*

26 N 3rd Street
267.687.2533
cafetolia.com
@cafetolia

Calandrino's Old City Vino*

110 N 2nd Street
267.930.7443
oldcityvino.com
@oldcityvino

Cuba Libre*

10 S 2nd Street
215.627.0666
cubalibrerestaurant.com
@cubalibrephiladelphia

The Franklin Fountain*

116 Market Street
215.627.1899
franklinfountain.com
@franklinfountain

Fork

306 Market Street
215.625.9425
forkrestaurant.com
@forkrestaurant

Forsythia*

233 Chestnut Street
215.701.4883
forsythiaphilly.com
@forsythia_philly

Fringe Bar*

140 N Christopher Columbus Blvd
215.375.7744
fringebarphilly.com
@fringebarphilly

High Street Philly

101 S 9th Street
215.625.0988
highstreetonmarket.com
@highstreethoagies

Khyber Pass Pub*

56 S 2nd Street
215.238.5888
khyberpasspub.com
@khyberpasspub

Las Bugambilias*

15 S 3rd Street
267.239.5673
lasbugambiliaphilly.com
@lasbugambiliaphilly

National Mechanics*

207 Chestnut St.
267.761.9209
luchacartel.com
@luchacartelphilly

The Plough and the Stars*

123 Chestnut Street
215.238.0499
ploughstars.com
@theploughphilly

Positano Coast by Aldo Lamberti*

212 Walnut Street 2nd Floor
215.238.0499
positanocoast.net
@positanocoastphilly

Race Street Cafe*

208 Race Street
215.627.6181
racesstreetcafe.net
@racesstreetcafe

Royal Boucherie*

52 S 2nd Street
267.606.6313
royalboucherie.com
@royalboucherie

Stateside Vodka

1700 N Hancock St
215.425.4200
@statesidevodka

Triple Bottom Brewing

915 Spring Garden St
triplebottombrewing.com
@triplebottombrewing

Restaurants with * offer a special promotion to Arden patrons. Please ask your server for details/scan the QR code for more details.

For complete restaurant descriptions visit: ardentheatre.org/dining

Dining Partners as of September 1, 2025



A Message

From Habitat for Humanity Philadelphia



At Habitat for Humanity Philadelphia, when we talk about “good bones,” we’re not just talking about what holds a house up. We’re talking about what holds people steady. Home is where dignity lives. It’s where memories are made, where families find safety, and where stability makes everything else possible. *Good Bones* captures this truth with honesty and heart, reminding us that a home is never just a structure—it’s the foundation for a life.

Since 1985, Habitat Philadelphia has worked alongside homeowners across this city who are deeply rooted in their neighborhoods but face real and growing challenges. Aging homes, rising costs, and unexpected hardships are pushing too many families to the brink. Like the houses in *Good Bones*, many of these homes show the strain of time and circumstance. And still, their strength remains. With the right care, investment, and partnership, these homes can continue to shelter families and anchor communities for generations.

Good Bones doesn’t look away from what’s hard. It asks us to sit with loss, uncertainty, and change—while still insisting that repair is possible. That balance reflects how we show up every day at Habitat Philadelphia. We are honest about the urgency of the housing crisis, and we are equally committed to solutions that keep people safely housed. Through home repair, affordable homeownership, and direct homeowner support, we help families stay in the places they call home and pass stability forward.

Theatre, like housing, is a shared act. It brings us together, asks us to listen, and challenges us to care more deeply. Thank you to the Arden for bringing this story to Philadelphia, and to you for being part of a movement that reaches beyond the stage.

May this production leave you thinking differently about home—and inspired to help build a stronger Philadelphia, together.



Corinne O'Connell

Corinne O'Connell

Chief Executive Officer

Habitat for Humanity Philadelphia

inspiring
A LIFE OF BEAUTY



Wood-Mode designers bring your vision to life through creativity and years of product and technical training. For more than 75 years, Wood-Mode has been developing products and training that inspire our designers, so they can inspire you.

Wood-Mode®
FINE CUSTOM CABINETRY

Visit Wood-Mode.com to get inspired, explore and learn more.

Wall & Walsh, Inc.
(610) 789-8530
wood-mode.com

8320 West Chester Pike
Upper Darby, PA 19082

\$100,000 and above

Hamilton Family Charitable Trust
PA Department of Community
and Economic Development
The Pew Center for Arts & Heritage
Rosenthal Family Foundation
Shubert Foundation
William Penn Foundation

\$50,000 to \$99,999

Harmelin Media
Wyncote Foundation

\$25,000 to \$49,999

Anne M. and Philip H. Glatfelter III
Family Foundation
Bell's Market
The Horace W. Goldsmith Foundation
PECO Energy
Harold and Mimi Steinberg
Charitable Trust
The Victory Foundation

\$10,000 to \$24,999

Arcadia Foundation
Fox Chase Bank Charitable Fund
Gray Fin LLC
Independence Foundation
John Ciccone Playhouse Charities, Inc.
The Haley Foundation
The Sylvia W. and
Randle M. Kauders Foundation
Pennsylvania Council on the Arts
PNC Charitable Trusts
The Suzanne Roberts Cultural
Development Fund
TD Charitable Foundation
Truist
Univest Financial
Zeldin Family Foundation

\$5,000 to \$9,999

Bendita Foundation
Civic Foundation
Comcast Corporation
Cuba Libre+
Janet Yaseen Foundation
Lincoln Financial Foundation
Parkway Corporation
Sun East Foundation

\$2,500 to \$4,999

Charlotte Cushman Foundation
Christopher Ludwick Foundation
Connelly Foundation
Elliott-Lewis Corporation
Franklin Fountain+
Fringe Bar+
Fulton Bank
Hamilton Family Foundation
Greater Philadelphia Cultural Alliance
Las Bugambilias+
Linda and David Glickstein Fund
of the Philadelphia Foundation
Philadelphia Activities Fund
The Plough and the Stars+
Positano Coast by Aldo Lamberti+
TCF- The Community's Foundation

\$1,000 to \$2,499

Alex J. Ettl Foundation
Cafe Tolia+
Calandrino's Old CityVino+
Dolfinger-McMahon Foundation
Forsythia+
Firsttrust Bank
Global Atlantic Financial Group
Hassel Foundation
Khyber Pass Pub+
Christian R. and Mary F. Lindback
Foundation
National Mechanics+
Race Street Cafe+
Rittenhouse Foundation
Royal Boucherie+
Triple Bottom Brewing+

Up to \$1,000

Actors' Equity Foundation
High Street Philadelphia+
Greenberg Traurig- Northern VA
Paul L. Newman Foundation
The R. Andrew Swinney Presidential
Achievement Fund of the
Philadelphia Foundation
Quaker Printing+
Weavers Way Co-op+

Employee Giving, Matching Gift, Donor Advised Fund Partners

American Online Giving Foundation
Bank of America
Bristol Myers Squibb
Cadence Design Systems, Inc.
Cencora
Charities Aid Foundation of America
The Chicago Community Foundation-
CIGNA Corporation
Comcast Corporation
DAFGiving 360
Dell
Dun & Bradstreet
Equitable / AXA Foundation
Every.org
Exelon Corporation
Fidelity Charitable
Friends of Education
Give Lively Foundation
Global Atlantic Charitable Gift Fund
Google
GS Donor Advised Philanthropy Fund
for Wealth Management
Impact Assets
Independence Blue Cross
Independence Foundation
Intel Foundation
Jewish Communal Fund
Johnson & Johnson
JP Morgan Chase & Company
Macy's/ Bloomingdale's
Mastercard
McKesson Foundation
McKinsey & Company
Morgan Stanley Gift Fund
Merck Foundation
National Philanthropic Trust
PayPal Giving Fund
PECO
Penn's Way
The Philadelphia Foundation
Pfizer
PricewaterhouseCoopers, LLP
Radian Group, Inc.
Renaissance Charitable Foundation
Susquehanna International Group, LLP
TD Bank
Thrivent Charitable Impact & Investing
Toast
United Way
Vanguard
Vanguard Charitable
William Penn Foundation

ARDEN SUMMER CAMP

For Kids and Teens



Action packed theatre classes taught
by theatre professionals!

Learn more and register online at ardentheatre.org



Plus, the Summer Teen
Musical Announced!

Stephen Sondheim's

INTO
THE
WOODS

For Grades 9-12:

Audition, rehearse, and perform
the iconic TONY® Award-winning
musical. Work with a professional
director and musical director to bring the
production to life.

Learn more and register online at ardentheatre.org



Grounding the Present, Nurturing the Future

The Sylvan Society recognizes individuals who support the Arden's work by making annual gifts of \$1,000 or more.

The special generosity of our members enables the Arden to tell great stories by having the resources to achieve the highest level of artistic quality.

*This list represents gifts made through January 8, 2026

Oak Grove
(\$50,000 and above)

Nancy and Bob Elfant
Joanne and Jon Harmelin
Monica and Philip Rosenthal
Harvey B. Swedloff

Chestnut Grove
(\$25,000 - \$49,999)

The CHG Charitable Trust
Kate Groark-Shields
Michael Grove
Jessica Phelan
Lee and Chris van de Velde
June and Steve Wolfson

Sassafras Grove
(\$10,000 - \$24,999)

Sally Bailin
George Benes and Michael Mallee
Sandy and David Beswick
Lois G. Brodsky
Rayenne A. Chen
Anne Cook and Russ Troyer
Christina and David Fryman^
Elizabeth Gemmill
Terry and Ann Marie Horner
Deborah R. Kravetz and
Bill Robling
Robert and Risa Lavizzo-Mourey^
Peggy Morgan and Patty Bowman
Charles Rose
Bernard and Camille Rosenberg

Cherry Grove
(\$5,000 - \$9,999)

Anonymous
Brian Abernathy and
Elizabeth Ireland
John R. Alchin and Hal Marryatt
Brett and Nan Altman
Richard and Kathleen Aregood
Bethany Asplundh
Andrew Bickford and
Kristina Denzel Bickford
Brenda and Marty Brenner
Diane Dalto and
Richard Woosnam
Ann E. Diebold
Deb Dorsey and Mike Green
Laura Drake
Stephen Falchek and
John Offidani III~
Shannon and Ted Farmer
Jill Fisch and John Gassenheimer
Richard Harris
Jim and Carolyn Hessinger
Leigh Ann Hewston
Valerie Koscelnik
Robin and Saifuddin Mama
Elesa Nelson
Alexis and Ed Pappas
Ceth and Sam Plum
Joel and Bobbie Porter
Roselyn K. Robinson and
Warren B. English

Sid and Ruth Rosenblatt
Sharon and Irv Shapiro
Hether and Don Smith
Rosalyn and Stephen Weinstein
Nancy Brent Wingo
Hope Yursa

Filbert Grove
(\$2,500-\$4,999)

Charles Arnao and
Rosemary Watt^
John and Amy Bitman~
Karl Carter
Barbara Cobb
John Coleman and Diane Runyan
Fern and John Culhane
Michael A. and Edward C. Donato
Paul and Judy Farber
Donna and Norman Faye
Elizabeth Fernández-Viña~
Linda and David Glickstein
Jennifer Harmelin
Eileen Heisman and Marty Tuzman
Ed Hillis and Audrey Cohen
Peter* and Louise Kelly
Kenneth and Eve Klothén
Peter J. and Sandra Klugman
Marilyn and David Kraut
James Kronzer
Kortney Cruz

Sylvan Society cont...

Alan and Elaine Lindy,
In Honor of
Eileen Heisman Tuzman
William A. Loeb*
Janice Madden and Carl Sheingold
Barb and Don Matheson
Linda McAleer
Amy Murphy and Terry Nolen
Kimberly C. Oxholm and
Carl Oxholm III
E. Graham and Elizabeth Robb
John and Claire Rodgers
Ellen Schwartz and Jeremy Siegel
Patricia Smialkowski and
Ben Kaplan
Gayle and David Smith
Keith and Jim* Straw
Stephen and Kathy Thompson
Allison Weissman,
In Honor of Bebe Maritsis

Mulberry Grove (\$1,000-\$2,499)

Anonymous (6)
Jerry Abelson and June Itzal
Joey Abramowicz and Jeff Coon
Hank Adamczyk and
Iris Melendez
Becky and John Adams
Diane and Katie Alessi
Stan and Lisa Altman
Winifred Anderson and Eric Lien
Jennifer and Stephen Arms
Jim and Janet Averill
David J. Baker
Sheryl and Allen Bar
Carol Beam
Sheila Bell
Jay and Nancy Berkowitz
Linda and Mark Bernstein
Bill and Brenda Bertrand~
Ian and Ryane Nicole Beutler
Louis Bluver
Reid Bodek~

DeDe and Tony Brown
Ann and David Brownlee
Elizabeth Campbell,
In Honor of
Eva, Cora and Maisie
Christopher and Jeffrey Carver
Dr. Lawyer and Rosetta Chapman
Ed Chew
Brian Cleary
Cordelia Clement
Marc and Margie Cohen
Kelly Colarelli~
The Susan Lavine
Coleman Charitable Fund
Gregory L. Coleman
Katherine Davies
and The Garland Family
Rebecca Davis and Mark Hoffman
Ellen Deacon~
Joy De Jesús and James Reynolds
Robert M. Dever
Tobey and Mark Dichter
Eric Dube and Gregory Simone
Jonathan V. Edmondson^
Carol Eicher
Leonard Eisenman
Jonathan and Nancy Ellsworth
Epstein Family Charitable Trust
John Erickson and Harry Zaleznik
Lisa Fair and Bryce Quayle
Mr. and Mrs. Farenback-Brateman
Dr. and Mrs. Mark Feitelson
Jeanne B. Fisher
and Robert F. Lang
Carole M. Foley
Dieter and Sara W. Forster
Ellen and Tim Foster
Sandi Foxx-Jones
Nancy Freedman,
In Honor of David Pressel
and Jill Feldman
Lou and Rhoda Fryman
Paula Fuchsberg
Chekemma Fulmore-Townsend

Dan Gannon
Joel R. Gardner and
Holly A. Phelps
Julie and Tom Gennaro
Joseph and Jane Goldblum
Janet Lynne Golden
Terry Graboyes
Kelly Grattan and John Lopez~
William and Joan Greenfield
David C. and MaryJane Hackney
Ann and Glenn Haig
Anne Halkedis^
Ellen and Steve Harris
Hon. Lillian Harris Ransom
Dr. Valerie Harrison
Don and Lynn Haskin
Janis Hawes and
Patrick Cunningham
Charles W. Head Jr. and
John A. Faggotti
Heidi Hertfelder^
Karen and Mark Hite
Deborah Hluchan
Phyllis Hochberg and Stuartz Katz
Diane Hlywiak
Diane Hofer
Tim and Renee Jessell
Jill Hyman Kaplan and
Elliot Kaplan
Rachelle and Ron Kaiserman
Margie and Scott Kasner
Holly Kinser
Carol Kelley
Holly and John Kleimo
Steven Klein
Steven Knepper
Thomas and Anne Kohn
Bernadette Koller
Valerie Koscelnik
Mary Ellen Krober
Cyana La Divertida
Mr. Robert Leventhal and
Ms. Cheryl Getty
Pamela and Paul Litwack

Sylvan Society cont...

George A. Loeb
 Melissa and J.C. Lore
 Michael MacFarland~
 Richard Maimon and Susan Segal
 Lee Marks* and Lisl Zach
 John and Amy McCawley^
 Kathy McMaster
 Peter and Laura
 (nee Beckie) McQuaid
 A.C. Missias
 Joann Mitchell
 Leslie and Michael Molder
 Adam Mussell and
 Kate Whittington~
 Marge Neff and Dan Winterstein
 Kathleen Nelson and
 John Kromer
 Arnold and Shelley New
 Hung Nguyen
 Mary Ivy and Roger Noone
 Michael Norris and Matt Varrato
 Susan Odessey
 Michael Ogborn and
 Robert Soslow
 Barbara Oldenhoff
 Dan O'Neil and Travus White^
 Frederick G. Ott^

Robert Overell and Lisa Glasser
 Don and Barbara Parman
 Brian and Melissa Pinheiro
 Claire and Lud Pisapia
 Ronald and Pam Pontano
 Laura and Douglas Pratt
 David Pressel and Jill Feldman
 Salvatore Priore
 Daniel Promislo
 Aneira Puttaswamy
 Alan Reinach and Dana Perlman
 Alice Reyes
 Joy Rickabaugh
 Franklyn and Cintra Rodgers
 Jane A. Rose, CPA/PFS
 Mike Salmanson and Tobi Zemsky
 Gisèle Sambar Bathish
 Becky Sassi
 Geoff Schmidt and Marie Wong
 Kim and Ross Schmucki
 Terri Schwomeyer
 Kathy Sernak~
 Genvieve and Clete Shields~
 Roy and Lee Shubert
 Laura and Ron Siena
 Paulette Singleton
 Kathy and Don Smith

The Spector Charitable Trust
 Rudy Sprinkle and
 Andrea Barsevick
 Mike and Shannon Stellato~
 Robert and Sydney Stevens
 William K. Stewart, Sr. Foundation
 Eric Tamulonis and
 Deirdre Gibson
 April J. Tvarok
 Nancy Urbschat
 Jason Vail
 Donna Visioli~
 Donna and Andrew Wechsler
 Thomas and Dawn Weiss^
 Ellen Yin+
 Beth Zatuchni and Jerry Satlow~
 Tom and Jackie Zemaitis

* Denotes a deceased supporter
 + Denotes a gift of goods or services
 ^ Includes a matching gift
 ~Includes a monthly gift
 This list represents gifts made through
 January 8, 2026

THE LEGACY SOCIETY

Arden Theatre Company would like to recognize the following supporters who have included the Arden in their wills or estate plans. Their planned gift provides support which will help sustain the Arden's work for decades to come.

Anonymous
 Ms. Peggy Anderson*
 Stanley Baurys*
 Ivy Bayard*
 Jane Berryman
 Louis Bluver
 Mary P. Burr
 Pearl M. Carpel*
 Larry S. Friedman* and
 Dean H. Rishel
 Ellis Ginsberg*
 Peter Gistelinck and Kim Bloom

Grace Gonglewski and
 Eric Schoefer
 Gary R. Grob*
 Kelly Grattan and John Lopez
 David C. and
 Mary Jane Hackney
 Jim and Carolyn Hessinger
 Suzanne and James Hill
 Alan and Nancy Hirsig*
 Mary Ellen Krober
 DawnLynne Kacer and Family
 William A. Loeb*

Donald Martin and
 Richard Repetto*
 Peggy Morgan
 Tom Petro and Kris Messner
 Kristen Phillips and Matt
 Schreck
 Renee E. Polsky*
 Madeline Portnoy
 Irene M. Reiter*
 Dr. Harry Rosenthal
 Marilyn and Dean Staats
 Carolyn and Richard Weaver

We hope you will consider including the Arden in your will or estate plans. To be recognized as a member of the Legacy Society or with questions regarding planned giving, please contact Jessica Abel, Director of Development, at 215.922.8900 x149.

Thank You to Our Supporters

\$500-\$999

Anonymous
Eileen Abel
Lawrence Abramson
Kim and David Adler
Sally and Michael* Bailin
Raymond Becker and
Richard Wilson
Ellen Baxter and Robert Kavash^
Jacob and Crystal Brogan
Vincent Burkheimer
Beth Burrell and David Sorensen
Joseph and Helen D'Angelo
Michael Delaurentis
Kathy Duffy
Jason and Jennifer
Ellsworth-Aults
Joel R. Gardner and
Holly A. Phelps
Janet Ginzburg and John Caskey
Joseph and Jane Goldblum
Karl Janowitz and Amy Goldman
Grace Goglewski and
Eric Schoefer
Marianne Green
Patricia Haney
Rhoda Harrison
Steve* and Jane Heumann
James Hinrichs
Glenn Holsten
Jane Kamp and Thomas Lloyd
Barbara and Jerry Kaplan
Ms. Leslie A. Kase
Stephen Kieran
Janice King
Ruth and Peter Laibson
David Lerman and
Shelley Wallock
John and Martha Lubell
Susan Mack
Lynn Marks and
Clifford Pearlman*
Mary Ellen Marzullo~
Adrienne Mendell
Nancy Middlebrook
Susan and Alan Miller
Siddhartha Misra^
Linda Moskowitz
Shannon Mullican and
Kurt Schillinger^
Paul Nutaitis and Bob Clark
Kimberly C. Oxholm and
Carl Oxholm, III,
In Honor of our grandchildren,
Oliver and Eloise
Barbara Porter
Janet and John Poth
Paul Rabe and Cheryl Gunter
Susan and Steve Reisbord
Rachel R. Reynolds
Daniel and Faye Ross,
The Ross Family Foundation
Dan Rothermel and
Michael Hairston
Carole M. Saft
Karen Schermerhorn and
Evan Seymour
Larry and Carol Segal
Joseph and Louise Shaffer^

Jennifer L. Sirois+
Thomas Sherman and
Nancy Middlebrook
Stuart and Paula Solomon,
In Honor Of Sydney Solomon
Barbara and Robert Stewart
Susan and Jim Strohman^
Elena Tappit-Emas
Mary Thomas
Adrienne Topic
Lewis and Hella Volgenau
Vivian Weinblatt
Joyce Weiner and Albert Tedesco
Abigail Wolf and Jonathan Weiss
Joan and Dane Wells
Ceci Yin^

\$250-\$499

Anonymous (3)
Stuart M. Adair~
Jay Anstee
Robert and Sandy Clay Bauer
Ellen Baxter and Robert Kavash
Richard and Eileen Bazelon
Pat and Tom Bender
Sara and Bruce Berger
Ruth Berman
Charlotte H. Biddle
Fern and Robert Billet
Barbara Bisgaier
Linda and Alden Blyth
Janice Bogen
Tom and Mary Pat Boyle
Barbara Bromfield
Riley Brown
Carol and Allen Bonner
Wayne Bullaughay
Stephen and Eleanor Bulova
Monika Burke and
Kresimir Starcevic
Chip Capelli, In Honor of
Amy Murphy
Debbie and Alan Casnoff
Elizabeth Cerkez and
Alec Schoenfeld
Leah Chaplin and Eileen Gildea
Stephen Chrzanowski and
Karen Feisullin
Annemarie F. Clarke and
David L. Buch~
Diane and Patrick Close
Mark Cohen and Marty Johnson
Janet and Richard Conn
Carol Cook
Carol Copland
Marsha Covitz
Betty Cooper
Jill, Katie and Hank Croft
Helen Newbold
Bill Davis and Lisa Handler
William Diebold and
Deborah Freedberg
Stuart and Diana Donaldson
Robert Earle^
Michael Edelman
Mary Lynn Ellis
Norman and Carolyn Ellman
Anne C. Ewers
Steven and Cheryl Feil

John and Nancy Fischer
Jacqueline Foldesy
Adam Ford
Karni Frank
Carol Fuoco~
Brenda Furtak
JJ Garcia and Charlie Dreisbach^
Mary Geisz and Keith Pryor
Teresa Gillen
Scott and Lynda Glading
Diance and Fredric Graboyes
Yoni, Tracy and Omari
Greenbaum
Carol Gregory
Dennis Grubb
Trudy and Paul Gutterman
Carol Hauptfuhrer
Alice Hennessy
Lauren Hersh
Richard and Barbara Hirsh
Terry Hirshorn
Michael J. Hozik and
Margaret L. Rea
Peter and Nora Hunt-Johnson
Thomas Hurster and
Jacqueline Salmon~
Mary and Howard Hurtig
Jim Hutchison and Nanci Ritter
Anna Jacobsen
Becca Jensen Compton
William Jordan*
Anne and Craig Jorgensen
Lisa and Perry Kahn
DawnLynne Kacer and Family
Adam Kamens
Phyllis Kauffman
Douglas and Ruth Keating
Jill Kemp
Michael and Marie Kenis
Kate Kidder
Rachel and Will Kipnes
Brian and Caren Kirschner
Paul and Michelle Kleschick
Maris Kobb
Bea and Norm Leopold
Sharon Levin
Norman and Sylvia Lieberman
Larry and Nancy Ludgus
Robert Ludwig and Joan Ryder
Theresa Mader and David Suter
Lorraine and Bruce McMahon
Cirel and Howard* Magen
Rose Malague
Lynn Mark
The Kathleen J. Moyer
Charitable Fund
Christopher Mullins
Frances Novack
Deb Olley and Brian T. Murphy,
In Honor of Deb Dorsey
and Mike Green
Timothy O'Malley
Carherine Ormerod
Mr. Larry Pace
Enrico Pagnanelli
Joseph Palumbo
David and Amy Pollack
Sandy Portnoy
Ilene and Coleman Poses

Sign-up for Arden eNews to get updates and special offers! Visit ardentheatre.org/enews

Thank You to Our Supporters

Nick and Peg Potalivo
Carol and John Rauch
Krista Reichard
Kurt and Mary-Ann Reiss
Michael Riccardi
Robin Rifkin and
Michael Silverman
Gary and Robin Risler
Claire Rocco
Edward and GERALYN Rock~
Robert L. Roessler
Maxine Romano
Len Romberg
Carey and Robert Roseman~
Liz Rosen
Richard and Anne Rosenberg
Anthony Rostain
Adelle Rubin
Daniel and Corey Rudderow
Marilyn Sanborne
Les Schlessinger
Perlita and Frank Schorfheide
Jill and Kerry Schuman
Lauren and Daniel Schwartz
Harry Segal, In Honor of
Susan Segal
Ellen Somekawa and Eric Joselyn
Rita and Neil Stevens
Gay Strickler, In Honor of
Anne Cook
Misha Swanson
Richard Urbani
Carol and Paul Vahlstrom
Stephanie and Darrell Velegol
Annalouise Votta

Meg von Mehren and Eric Moss
Mark Wade
Barbara Wasserman
David Warshal
Marlene Weinberg
Doris A. Williams
Linda Witt and James Marsh
Arnold Wolf and Fern Tablin

\$125-\$249

Anonymous (7)
Jennifer Allegra
Hale Allen
Virginia Alpaugh~
Diana Alteegeor
Howard and Patricia Anton
Susan Apkon
Adrienne Athanas
Carl and Pat Bach
David J. Baker
Pam and Earl Ball
Cecily Banks
Maria Banks
Laurel Bar and Mimsye Katz
Judy Barrett
Maureen Barrett and
Mike Templeton
Stacy Bartram
Terry Bayer
Barbar Bell-Hawkey
Jean Bennett
Sandra C. Bennett
Sue Bentson
Timothy Berger and
Sarah Mooers

Zak Berkman
Girish Bhat
Lynn Biondi
Stacy Blacksheer
Ilene Blain
Nathan Blum and
Barbara Rolnick
Christine Blumenthal
Stuart Bogom and Dorel Shanon
Ethan Boldt
David Bolles
Miriam Bowerman
Helen Boyle~
Michael P. Boyle
Leslie Bradley
Stanton and Jill Braid
Gary Bramnick
Amy Brantz and
Edward Bedrick
Michael Brassloff
Joseph and
Mary Lou Breidenstine
Ed Broderick and Erin Duffey
Alice Bronstein
Maureen Brown
Peter Brown
Aimee Brywka
Jeanne Calloway
Shellie Camp
Sarah Campbell
Larry Carlin
Mr. Keith Case
Caroline M. Castagno
Steve Castleton
George and Barbara Chalmers

Become a MONTHLY DONOR

to help sustain our daily work
throughout the year!

This consistent support provides core financial stability to help keep the lights on, employ local theatre professionals, and reach even more students throughout the Greater Philadelphia area.

Becoming a monthly donor is the easiest way to increase your impact! Simply tell us how much you would like to donate monthly in the link below and we'll take care of the rest. A recurring donation of any amount helps:



**\$10
a month**

keeps the lights on during a
full day of performances.

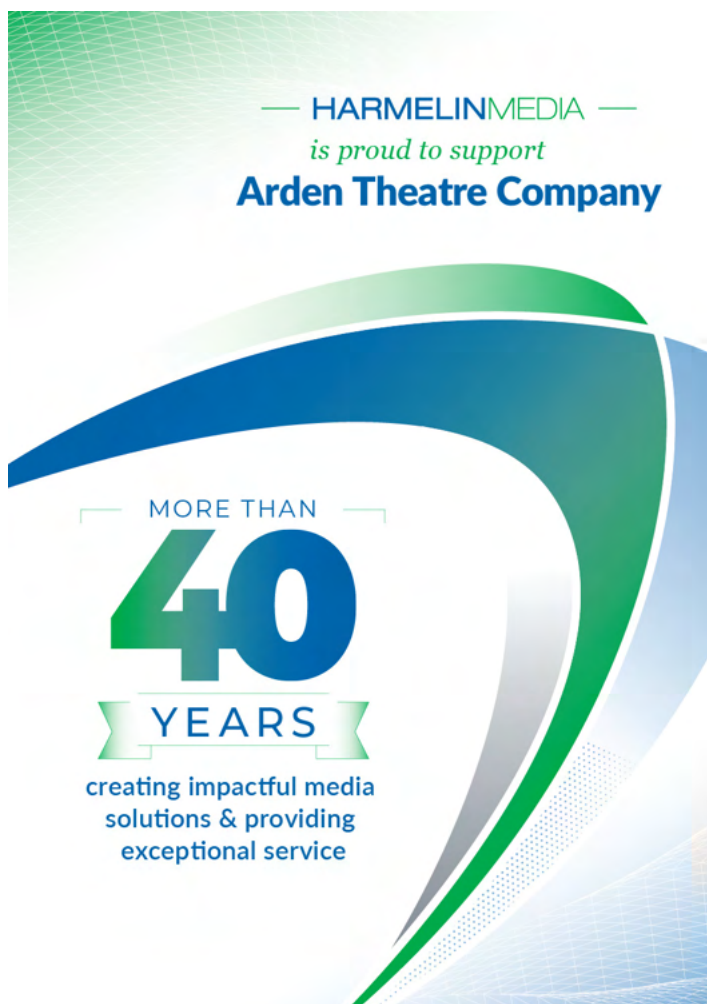
Scan to donate:

ardentheatre.org/donate



Thank You to Our Supporters

Mrs. Patricia Chamberlin
Janhavi Chandra
Kat Christopher
Randi Chud and Bob Frey
Mayda Clarke
Miles Cohen
Vanessa Cohen
Lita Cohen
Barbara AC Cohen~
Michael and
Ellen Singer Coleman
Rick and Carol Collier
Ms. Nancy Conahan
Simon Connor
Janet Connor Love
Janet Cook
Donna Cooper
Barbara Cortese
Daniel Corti
Robert Craig
Sue Crow
Cynthia D'Ambrosio
Todd and Christine Darr
Jennifer Davies
Kelly and Steve DeAngelis
Rhonda Dickey^
Katarzyna Do
Harriet Dobin
Margaret M. Dolan
James H. Dovnarsky
Elise Drake
Donald Drake
Donald and Geraldine Duclow
Ryan Dunne
Linda Earle
James Eberwine
Harvey and Faith Edelman
Jeff and Michelle Eichen
Richard Elgart
Ted and JoAnn Erfer
Steven and Amy Erlbaum
William* and Anne Ewing
Mark Fisher
Pamela M. Fisk
Joan Flank
Fred and Kay Fletcher
Kenneth Foster and
Mary Jenkins
Kimberly Foster^
Marisa Freda
Paulette Freeman
Douglas Frenkel and
Marlene Weinstein
Christine Fricker Moore
Cheryl Friedenberg
Maryanne Noel and
Philip Friedman
Matt Fuss
Abraham Gafni
Dennis Gallagher
Miriam Galster
Janet-Lynn Garrabrant
Hugh Gayton
Mary Geisz and Keith Pryor
Greg Gephart
Jamie Giambrone
Waseem Givens



Joan D. Gmitter
Ilse Goldfarb
Amy Goldstein
Chris Gray
Tierney Griffin
Michelle Grimley
Erin Grubb
Craig Gunnett
Nava Hall and John Lionarons
June Hament
Elaine Harris
Philip Harvey
Susan Havens-Lang
Don Henry
Wendy and Steve Hess
John Heward~
John and Marcia Hiehle
Joanne and Michael Hinton,
In Honor of Harvey Swedloff
Leonard and Audrey Hoffman
Toby Hogan
Linda Hollenback
Esther and Robert Hornik^

Lynda Hubbell
Steven Humphreys
Dave Ingram
Gwynne L. Issacs
Rinu Jacob
Hildy Jaffe and Dan Lasdon
Timothy M. and
Carol M. Johnson
Martha Johnston
Christina Jones
Debbie Joyner
Ellen Kaplan
Mr. Bradley Kaye
Nina Keenehan
Lisa Keiner
Chrissy Kind
Suzanne King
David Klein
Ken, Eva, and Aaron Klein
Marlena Kleit
Elena Koshkina
Vicki and Don Kramer
Daniel Lai

To join the *Sylvan Society* or for more information on how you can support the Arden, please contact Orelí Uzdavinis, Manager of Individual Giving, at 215.922.8900 x131 or ouzdavinis@ardentheatre.org

Thank You to Our Supporters

Andy Lamas and
Ginny Vanderslice
Doug Layne
Michael L. Levitan
Mary Lee and Bill Lieser
Kathleen and Daniel Lipinski
Linda Litwin
Diane and Michael Love
Susan and James Lytle
Kathleen Mahan
Joseph M. Manko
Linda and David Marder
Fran Martin
Jane Martin
Ken and Margery Maurer
Jane O. McCahill
John McCormick and
Ken Schmitt
Patricia McDonough
Victoria McFarland
Michelle McFarlane
Barbara McGlynn
Micheline McManus
John McMillan
Arthur and Sallie Melvin
Mark Mendenhall
Joanne Meredith
Cheryl and Gerald Meyer
David and Concetta Milano
Katie Milgrim
Sandra and Martin Miller
Melanie Miller
Dale Mitchell
Melba Moore

Kenneth and Susan Myers
Linda Nelson
Pamela Nelson
Jennie Nicolayev
Laura Nicoletti
Etta and Charles Nissman
Mary Nolen
Mr. Joe Norton
Janet and Dennis Novack
Jim and Patti O'Connell
David and Monda Noyes
Judith O'Dell
Brenda J. Oliphant
Linda Osler
Dr. Douglas Overtoom
Michele Palamountain
Diane Panepresso
Jason Pantano
Michael and Judy Paul
Anne Peniazek
Bob Perdick and Lenny Smith
Mary Perkins
Teresa Peterson
Matthew Pettigrew and
Mary Martello
Andrew Pettit
Kathy Pettit
Marsha Pincus
Deborah Pines and
Carl Perchonock
Martha Platt and Marlis Kraft
Tara and Andrew Poag
Elizabeth and Jeffrey Podraza
Florence Poris

Dr. Nancy Post
Shaila Prabhakar
Michelle Pryor
Ange and Jan Puig
Kirsten Raleigh
Mark and Karen Reber
Mr. and Mrs. David and
Diane Richman
Andrew Ribbe
Kathy Rigby+
Judith Ring
Kelley Roberts
Adriana Robinson
Sue Roh
Lou and Laura Romano
Carey and Robert Roseman~
Maxine Rosen
Murrey Rosenberg
Shelley Rosenberg
Martin and Carol Rosenblum
Hal Rosenthal
Michael Roswell
Rene Rubin
Lila and Vincent Russo
Elizabeth Ryan
Janice Saibel
Bill and Joan Saidel
Kelly Santoro
Nathan Schatz
Julianna Schauerma
Nathan and Dolly Schnall
Doron Schneider
Mark Schreiner
Mark and Nancy Schure

Intern at the Arden



Pictured: Charles Rose and Dr. Mindy Goldberg Rose

Dr. Mindy Goldberg Rose Internship Fund

Founded in 2022, the internship fund is made possible through the generosity of Charlie Rose and the Rose Family and friends, in honor of Dr. Mindy's commitment to education, the arts, and making lives better.

Inspired by Mindy's commitment to
the future of theatre?
Add your support by donating today
at ardentheatre.org/support



ardentheatre.org/about/internship/

Meet our Fall 2025 Interns!



Bell Pendon,
Communications



Emily Lathers,
Archivist

Over 12 weeks, our current interns have been working with our Marketing and Development teams to gain hands-on experience while learning all about the strategies and tactics that support the Arden.

**Hear from Bell and Emily about their
internship experience by visiting our blog:
ardentheatre.org/blog.**

Thank You to Our Supporters

Judy Schwan
Evelyn and Harold Schwartz
Janet Sclaroff
Lisa Semeraro^
Edward Senn
Jesse Shafer
Karen Shakoske
Philip and Lind Shalanca
Gioia Sharp
Peter and Darlene Sherman
Debbie and David Silver
Celestine Silverman
Claudia Simon
Alisa Skatrud
Rhonda Smith
Alison Smith
Wayne Snover and Janet Tebbel
Hillel Soifer
Jeremy Souder
Barbara and Steven Speece
David and Daria Spingler
Marilyn Staats
Martha Stan
Konnie Stark
Dr. Christina Stasiuk^
Stephania A. Steed
Paul Steege
James and Lisa Steiker
Thomas and Molly Suddath
Margaret Sulvetta
Sylvia Szpak
Daniel Szyld and Kathleen Ross
Michael Tardis
John Tarves
Dorothy and Bryce Templeton
Tyrone Thomas
John Thomas
Kelvin K. Thompson Sr.
Marian Tracey
Judy Trailer~
Mr. Nova Tucker
Lyn Tuckman
Elaina Tully
Bryan Ulishney^
John Urofsky
Kellee Van Aken
Claudia Vanwyk
Leonard and Nancie Velcik
Nora Vizzachero
Patricia Vogler
Darrell Velegol
Annette Voltz
Ian Wachstein and
Michele Zeldner
Annie Wagoner
Marc and Tova Walton
Leonard Wasserman
Michael Webber
Joan Weiner
Shelly and Fred Weiner
Sarah Weinstein
Margo Weishar
Davis Weiss
Teresa Welsh
Constance West
Gwen White
Ann Wilson
Joy Wittenburg
Richard Willis and
Linda Hartnett
Angela and
Michael Winterrowd~

Karen Wittig
Dafna Yachin
Debbie Zakehim
Diana Zalewski and
Edward Fink^
Bruce Zewe

\$75-\$124

Anonymous (10)
Anonymous, In Honor of
Arden Drama School
Scholarship
David and Eileen Abels
Dinah Abelman, In Honor of
Charlie Rose
Linda Adams, In Honor of
Peter Adams
Diane Ajl
Andrew Amuso
Mary Anthony
Cheryl Apprey
Phil Argyris
Anne Arian
Sandra Arnold
Jody Artur
Luanna Ausen
Anne Ayers
Theodore Bahner
Elizabeth A. Baker
Deborah A. Bambino
Theresa Baraldi
Ann Barbarin
Janice Barbour
Fred Allen Barfoot
Sally and Morris Barron
Peter Bartkowski
Nathalie Bartle
Joseph Bartman
Lean Batchis
Chris Batcsics
Amanda Bauman
Frances and Michael Baylson
Nancy Bea
Gregory Beasley
Thomas and Eileen Beck
Judy Beck
Flora Becker
Jim Becker
David Belanger
Ian and Carolyn Bell
Michele Bennett
Sandra C. Bennett
Mr. David Berch
Andrew Berenato
Adam Berger
Irene Berkowitz
Connie and Dick Berman
Andrew Betts
Barry and Marilyn Bevacqua
Linda Bianchi
Cordelia F. Biddle
Belinda Birnbaum
Christine and Chris Bischoff
Wendy Blackburn Eastland
Charles and Mary Blakinger
Jocelyn Block
Wayne and Marcia Blodgett
Ines Bloom
Lori and Giovanni Blount Cucchiario
Cynthia Bohse
Rebecca Bolden
Jane Bonenberger

Sonja Bontrager
Linda and Andy Borson
Iris and Michael Boshes
Viola W. Bostic
Janet Bowker
Mary Ann Boyer
Carolyn Braciszewski
Edward Brazell
Thomas Breeden
Jennette Brian
Ira Brind
Eadie and Allan* Brooks
Judith Broudy
Dorothy Brown, In Honor of
friendship with Libby Rosof
and Murray Dubin
Gary Brownstein
Erica Brunette
Lisa Brown
Patricia Bruncker
Eleanor Buenafior
Janice Burgh
Nora Burrridge
Crystal and Tom Bush
Amber Bush
Alexis Buss
Kathleen Butts
John Calaitges
Ann Callaway
Francis and Mary Calter
Ms. Carol Campanelli
Holly Campbell
Joseph Candeloro
Denise Canner
Hugh Cannon
Erica Carpenter
Carol Carroll
Donna Casciola
Joseph Casey^
Lillian and William Cassel
Troy Cawley
Scott Chambley
Julia Chapman
Kathy Chase
Joan Chmiel
Jolley Christman
Kathleen Cipparone
Alex Ciullo
Ruth Clauser
Isabel Cochran
Matthew Cohen
Beth Cohen
John Collett
Kimberly Collins
Jane Combrinck-Graham
Colleen Conaty
Mr. John Concannon
Jim Connell
Michael Connor
Gavin Cooper
Donna Cordner and
Brent Groce
Pamela Costanzi
Keith Cox and Virginia Mallonee
Abigail Coyne
B. Karen Coyne
Christine Coyne
Stephen Craig Family
Bill Creelman
Sara and Allan Crimm
Beckwith Cromer
Gwendolyn Croston

POSITANO COAST

ENJOY DINNER IN THE HEART OF OLD CITY
BEFORE OR AFTER YOUR SHOW AT THE ARDEN!



POSITANO COAST

BY ALDO LAMBERTI

212 Walnut St, 2nd Floor, Philadelphia
215-238-0499 | positanocoast.net

*Arden Patrons will receive a 10% food discount with
proof of tickets before or after the show.

SAVE THE DATE!

Seasons of Love



AN EVENING WITH ANGEL & FRIENDS
benefitting Arden Theatre Company
MONDAY, JUNE 1, 2026 | 8 PM

Featuring
Gilbert Sanchez
as Angel



Tickets start at \$125! Visit ardentheatre.org/seasonsoflove

Thank You to Our Supporters

Kortney Cruz
Paul Curcio
Louise Curl Adams
Richard Curley
Kathleen Curran
Lynne Cutler
Jessica Dale
Dahvia Dalton
Bart Davidoff
Gilbert Davis
Adam Davis
Thomas and Eileen Davis
Gina Daviso
Katy Dawley
Jane Day
Peggy de Wolf
Nancy DeCarlo
Betsy Decyk
Nancy Deibler
Jennifer Deja
Colleen DeLeo
Emilia Demarco
James Derr
Mrs. Darlene Di Paolo
Helen Dichter
Lori Dick
Nergis Dincer
Kathy and Eric Dobrzynski
Joanne Donahue
Ms. Donohue
Margaret Dooley
Patrick Dorsey
David Dotzert
Judith Drasin
Iris Duffield
Regina Duffin
Shannon and Pat Dunn
Lisa Dustin
Shirley and Wayne Dustman
Jonathan and Ella Edwards
Ms. Gladys G. Eilberg
Ricki Eisenstein
Laura Ekstrand
Linda V. Ellsworth
Mary Louise Elston
Beverly Emanuel
Jack Ende
Edmund and Judy Erde
Jack Erickson
Arturo Espinoza Jr.
Sonja and Thomas Eveslage
Susan L. Extein and Lucy Hyatt
Sonia Fair
Karen Falcon
Mrs. Kate Fay
Michael Feicht
Cari Feiler Bender and
Rodd Bender
Carolyn Ferber
Winifred Fessenbecker
Judi Field and Martin Getzow
Leila Finkelstein
Ross Firestine
Catherine Fischer
John Fitch
Paul Fitzgerald
Jean Fleschute

Karen Flora
Lena Flower
Moriah Ford
Tammy Forstater
Robert Fossler
Kenneth Frank
Ms. Judy Frank
Allyson J. Frank
Allan P. Freedman and
Amy Rappaport
Leslie Freeman^
Paulette Freeman
Michael and Helene Freidman
Lori Friel
John Fuchs-Chesney
Stephanie Fuller
Valerie Fusco
Richard J. Gaglianese
Anne Galbally
Judy Galgon
Eileen Gallagher
Nacole Gallagher
Ofelia Garcia
Matthew and Marie Garfield
Kathleen Garza
Marianne Geiger
Leslie Gerhart
Eric Gerstel
Mark Gibbons
Ms. Sandra Gibson
Blossom Gica
Alvin Gilens
Timothy Gilboy
Alvin Gilens
Connie Giordano
Mary Kate Glenn
Vince Goffredo
Daphne Goldman
Mary Goldman
Julia Goldstein
Mr. and Mrs. Bernard D. Goodman
Juanita Goodman-Gathright
Marsha Gordon
Bob and Jan Goren
Marylyn Goutmann
Mary Graham
Rick and Sharon Graham
Beth Grandizio
W. John Grant
Anna and Jerry Green
Cheryl and Jon Green
Nate Green
Alan and Sara-Ellen Greenberg
Ms. Grace E. Grillet
Sara Grimes-Donohue
Barbara Gross
Jonathan Greene
Adele Aron Greenspun
Paul and Terry Guerin
David and Myra Gutin
Bill and Debbie Haggett
Charlie Haines
Sondra Haley
Carly Hall
Emma Halpert
Eileen Hannan
Ms. Tonda Hannun DiPasquale

Mary Kate Harkins
Christiana Harkulich
Judy and Palmer Hartl
Karen Hassett
Ann Hausmann
Catherine Hawkes
Beverly Hayden
Jacquelyn Heiart
Joan and Richard Heller
Irene Hempstead
Susan Hendricks
Angela and Michael Hennessey
Jessica Hilburn-Holmes
Kylie Hill
Mike Hinkson
Larry Hirschhorn
Jeanne HiSeY
Mary Beth Hoban
Amy Hodgson
Michel Hoessly
Cindy Hoffman
Morton and Lois Joy Hoffman
Amy Hoffmaster
Dr. and Mrs. Bentley and
Clara Hollander
Marie Horchler
Trevor Horst
Paul Howard
Kelsey Howarth
Linda Howell
Lauren Hughes
Pamela Hunsberger
Charles and Elaine Huntoon
Dave F. Huting
Joan Ivanoski
Rhonda Jackson
Kathy Jacoby
John W. James
Barbara Jamison
Drs. Anthony and Estelle Chun
Scott Jeffers
Marilyn Johnson
Sharon Jones
Susan Jones
Lauren Kahn
Philip* and Marge Kalodner
Kim Kane
Karen Kaplan^
Dorothy Kaplan
Dorothy Karhnak
Mark Karlen
Nancy Kassam-Adams
Bruce and Carol Katcher
Michele Kaufman
Mr. Rosamond Kay
Jennifer Kay
Thomas Keary
Katharine Kelmelis
Frances and Paul Kende
Nancy Kengetter
Kathryn Kenney
Susan Kershaw
Toni and Herbert Kestenbaum
Bob Kestler
Robert and Susan Kettell
Julia Kharlip
Brendan Killackey

Look around. Want to reach this audience? Advertise in our upcoming stagebill.

For more information on custom packages, please contact Michel at mmazno@manzomediagroup.com
or Kim at krichards@manzomediagroup.com

Thank You to Our Supporters

Maureen Kilroy
Cheryl and John Kirby
Helene and Ron Klimberg
Rita Klinger
Barbara Klock
Jerry and Deena Koffler
Ellen Kopeland
Amy-Jo and Marty Koser
Arthur Kover
Stanley Krall
Garry A. Kramer
Shira Kramer
Cheryl Krause
Barbara Kreider
Heather Kreisner
Cyndy Krieger
Robin Kujan
Alan Kutner
Jon Landau
John Landreau and
Sherri Grasmuck
Andree Laney
Martin and Hannah Laufe
Sharon Lawrence
Gretchen Lea
Martha Leach
Victoria Leahy
Elena Legg
Jennifer Lentz
Sara Leonard
Maria Lerman
Ruth Lesser
Todd Levin
Ben Levine
Rafael Levites
Wendy Liebling
Kathy Linaugh
Robert Linblad
Daniel Linehan
Nathan Link
Victoria Lipoff
Kathleen Locker
Debbie Long
Richard Lopez
Jane Issacs Lowe
Timothy Lowry
Karen Lubert
Edward Lundy and Debra Reiff
Robert and Patricia Lynam
Terri Lynch
Irene Mack
Mary Lynn MacKenzie
Ann Malcolm
Tina Manco
Jamie Manning
The Manitone Family
Krista Mar
Ms. Bonnie Maradonna
Bob and Sue Ann* Marburg
Nicole Martz
Thomas Massimiani
Barbara Matteucci
William Maurer
Bill Mayes
Amy McCann
Maura McCleneon
Maria McCormick
Bernadette M.
Marie McCullough
Melissa McDaniels
Vincent McDevitt
William and Tina McDonnell

John and Wendy McGeehan
Jim McGorman
Kathleen McGrann
Anne McKenna
Max McKenna
Judith McLaughlin
Jane McLaughlin
Terrence McMahon
John McNulty
Michael McShane
Marianne Mellinger
Wendi Meltzer
Robert Mercadante
Vincent Meredith
Anne Michel
Bruce Miller
Barbara Miller
Diana Miller
Steve and Joyce Miller
Lina Minicucci
Elisa and Dom Minni
Catherine Minnis
Kristin Minot
Jack Miszencin
Donna Mitchell
Nazin Moghbeli
Philip Monagan
Jackie Morrill and Mike Donahue
Ann Mintz and Clifford Wagner
Tina Morrison, In Honor of Flynn
and his senior year
Peggy Morrison
Brad Moss and Laurie Gottlieb,
In Honor of Harvey Swedloff
David N. and Laurel S. Mosteller
Phanerrica Muhammad
Susan Muller
Theodore and Theresa Munz
John Murga
Peter Murphy
Dr. Susanna Nazarian
Scott Neifield
Claiborne Newlin
Donna Nini
Sylvia Nisenbaum
Raymond Nolen
Delinda Norrid
Jeannette and Daniel Norris
Laurie Ohayon
Jonathan Offenkranztz and
Deborah Gordon
Hannah Olanoff
Jeanne Omans
Eric and Julie Orts
Audrey Owen
Hedra Packman
Allison Parks
Steven Peitzman
Ronee Penoi
Jane G. Pepper
Lisa Perronne
Jacqueline Perry
Timothy Persico
Jill Perugini
Mr. Scott Peterman
Suzanne Petruzell and Bob Pisani
Bill Pfeifer
Melissa Picknell
Lucille Pilling
Marcia Pizer
Ron Plawecki
John and Victoria Podolski

Theodore Politis
Al Politowski
Audrey Porter
Judy Pote
Lawrence Powell
Dr. Tom and Candace Pratt
Cathy Pregmon
Frank and Patricia Preston
Mike Pulsifer
Diana Quattrone
Justin Quigley
Ms. Laura Raines
John Ramsaur
Brian N. Rath
Catharine Randall
Timothy and Joyce Ratner
Abi and Craig Reed
Kenneth Richman
Len Rieser
Bradford Riley
Richard Ritunnano
Angela Roach
Mary Ann Robinson
Matthew Robinson
Corinn Rocker
Ellen and Ralph Rosen
Elyn Rosenfeld
Adam Rosenthal
Julia Rosenzweig
Carole Roskoph
Libby Rosof and Murray Dubin
Richard Ross
Ashley Ross
Clara Roth
Enid Krasner and Alan
Rothenberg
Lynn and Michael Rothman
Cynthia Rowe
Marie Ruddell
Bernard and Barbara Ruegauer
Andy Rusnak
Amy and Mitch Russell
Stephen and Linda Russell
John Ryan
E. Ruth Sachs
Patricia Sack
Dawn Salmon
Cynthia Samuels
Mike and Mary Kay Sansone
Roberta Sampson
Carlos Santos
Lee Sargrad
Lane Savadove
Jean Sbarge
Dori Clarke
Karyn L. Scher
Titia Scherpber
Anna Schiffrin
Amber Schlesman
Robert Schlosser
Bobbie and Al Schmidt
Peter Schmitz
Ms. Adeline Schultz
Ms. Theresa Scott
Gail Scott
Patricia Scott Hobbs
Hideko Secrest
Annilee Seitchick
Julie Senko
Rich Sensenbrenner
William Shafer
Kathy and Peter Shea

Thank You to Our Supporters

Tripp Shenton
Shruti Shetty
Vera Shevchenko
Lisa Shiota
William Shoff
Charlotte Sibley
Robin Siegel
Stephanie Sigal
Don Silver
Judith Silverman
Mary L. Silverstein*
Annette Simiriglia
Wystan Simons
Joseph Sipala
Judith Skillings
Carleene and David Slowik
Catharine Slusar
Dennis Raymond Smeal
Bruce and Penny Smith
Carol Smith
Lillian Smith
Taylor Smith
Stephanie Snyder
Paula and Mark Solomon
Vicki Solot
Margaret R. Spencer
Usha Srinivasan
Catherine Staples
Elizabeth Sarrantino
Susan Steigman~
Elliot Sterenfelf
Steve and Judy Stern
Nicole Stevens
Steve and Judy Stern
Bonnie Stone
Louise and David Strawbridge
Elan Strominger
Andrew Swank
David Swartz
Dr. Dolores Szymanski
Matthew Taberski
Charles F.Tarr
Rick Terkowski

Kelly Thomas
Katie Thomas
Mary Jane Thompson
William Thompson
Ruth Thornton
Edward and MaryAnn Tierney
Louis Tillery
James Timberlake and Meg Rodgers
The Tobias Family
Anna Coxe Toogood
Ann Trail
Andy Travaglia
Victoria Turlik
Dagny Veitch
David Velazquez
Valeria Vasilevski
Cynthia L.Vena
Anthony Vitullo Jr.
Deborah Volkmer
Harriet Waanders
Joy Wadleigh and Richard Hudson
Emily and Charles Wagner
Lorimar Wagner
John Walber
Laura Waldrop
Paula and Lawrence Wallach
Tuesday Wallington Grimes
Sean Walsh
Jane Waltman
Jeffiner Ware
Tom and Beth Warms
Deanne Warner
Robin Warsaw
Ellen Watson
Barbara Weidner
Harri Weinberg
Howard Weiner
William Weir
Amanda Weisel
Lenore Weissberg
Shannon Welsh
Ellen Welson
Suzanne L. Weston

Cynthia Weyand
Patrick J. and Gina Whalen
Marsha Wheeler
Robert C. Wickline
Thelma Wigod
Joanne Wigod
Annmarie Wileczek
Gwendolyn Wiley
Carol A. Williams
Michelle Williams
Dawn Williams
Elizabeth Williams
Bob Willoughby
Jim Wilson
Lydia and Gary Winderman
Kim Winnick
Jane Winski
Marcia Witlin-Basickes
Susan Walbransku
Stephen Wood
Keith Yaller
Albert Yan
Kuna Yankell
Linda Yarlot
Lee Yeash
Barbara Yorke
Kristin Yorke
Anna Young
Kathy Zager
Hilary Zankel
Mary Ziegler

* Denotes a deceased supporter
+ Denotes a gift of goods or services
^ Includes a matching gift
~Includes a monthly gift
This list represents gifts made
through January 8, 2026

ARDEN CHILDREN'S THEATRE PRESENTS

THE Stinky Cheese Man and Other Fairly Stupid Tales

Based on the book
by Jon Scieszka
and Lane Smith
Adapted by John Glore
Directed by
Steve Pacek

APR 8- MAY 31

Bring the whole family and LAUGH with us this spring!

Thank You to Our Supporters

Gifts in Memory Of...

ALICE AND MARIE

Anonymous

JOSEPH V. AMBROSE

Anonymous

ALFONSO ANDRADE

Gabriela Andrade

TOM BEAM

Carol Beam

DR. DONALD BECKIE, PHD

Peter and Laura (nee Beckie) McQuaid

SHEILA CALLINAN

Anonymous

ELIZABETH P. CORNMAN

Anonymous

ERNEST CUFF

Ellen Deacon

MARJORIE DICKEY

Rhonda Dickey

MARCELLA E.

Bernadette M.

JOSEPH FINKLER

Charles Rose

STEPHEN J. GARLAND

Katherine Davies and The Garland Family

DONALD GREEN

Scott and Lynda Glading
Marianne Green

JAMES J. HANEY III MD

Patricia Haney

BARBARA HAWTHORNE

Anonymous

LUCKY HERTFELDER AND

SHARON CLAUSON
Heidi and Trudi Hertfelder

BARBARA KARR

Charles Rose

MILT AND ROZ KLEIN

Ken, Eva and Aaron Klein

JOHN KOSCELNIK

Valerie Koscelnik

SHEILA KUTNER

Dr. Beverly Emanuel
Alan Kutner

WALLY LOEB

Charles and Elaine Huntoon

HOWARD MAGEN

Cirel Magen

LEE MARKS

David and Eileen Abels
Sheryl and Allen Bar
John Fuchs-Chesney
Robert Craig
Stephen Craig Family
Greenberg Traurig- Northern Virginia
Mr. and Mrs. Bernard D. Goodman
Tim and Renee Jessell
Lisa and Perry Kahn
Rachel and Will Kipnes
Joanna Kipnes and Family
Scott Neifeld
Peach
Leonard and Nancie Velick
Jamaine Yarborough

TOM MCCARTHY

Carol DeLuca
Nancy and Bob Elfant
Karen Hassett
Carol Kelley
Jamie Nikithser
Bob Perdick and Lenny Smith
Jill Perugini
Vera Shevchenko
Dawn William

MINION

The Vander Woude Family

WESLEY MONTGOMERY AND SUE WINGE

Anne Halkedis

BRUCE AND

MARYBETH MUCKLEY
Lauren Muckley Campbell

MILA ANNA NGUYEN

Danny Nguyen

MIRIAM CHERYL NORRIS

Jeannette and Daniel Norris

KRISTIN OSGOOD LAMELAS

Diane Hlywiak

GEORGE AND DOLORES OTTINGER

Stephen and Kathy Thompson

CLIFFORD PEARLMAN

Lynn Marks

RICHARD RAGONESI

Lynn and Michael Rothman

RICHARD REPETTO

Dan Rothermel and Michael Hairston

ANNIE RICHARDSON

Anonymous

MAITLON RUSSELL

Linda McAleer

GEORGE R. SZYMANSKI, ESQ.

Dr. Dolores Szymanski

ANURADHA SEEKAY

Aneira Puttaswamy

GERI TALLONE

Scott and Lynda Glading

MIKE TINKER

Janice Burgh

WALT VAIL

Jason Vail

PETER WALDRON

Rich and Lolly O'Brien

BETTY E. WATERS

Anonymous

FRED AND ARLEEN WEINSTEIN

Judy and Palmer Hartl

LESLIE F. WELSON

Ellen Welson

CASEY ZEFF

Eileen Heisman and Marty Tuzman

Gifts To Named Funds...

NAMED SEATS THIS SEASON

George Ahern
Jill Fisch and John Gassenheimer
Blossom Gica

ANDREA MENGEL FUND

Doug and Kristin Berman
Derick Dreher
Independence Foundation
Susan Sherman

ANN B. MCNAMEE

FAMILY THEATRE FUND

Dennis and Louise Buckley
Dennis Rodkin
Melissa Rodkin
Robert and Joan McLaughlin

THE DR. MINDY GOLDBERG ROSE INTERNSHIP FUND

Dinah Abelman, In Honor of Charlie Rose
Nancy and Bob Elfant
Equitable/ AXA Foundation
Bruce and Sherrie Greenfield
Charles Rose
Heidi and Mitchel Rubin,
In Honor of Nathan Dorman
Dorothy Sheridan

THE BERNARD AND CAMILLE ROSENBERG FAMILY THEATRE FUND

Bernard and Camille Rosenberg

Board and Committee Members

Board of Directors

Michael A. Donato, *President*
Rayenne A. Chen, *Vice President*
Dr. Valerie Harrison,
Vice President
Michael S. MacFarland,
Treasurer
Richard L. Maimon, *Secretary*
Dr. Lawyer Chapman
Kelly Colarelli
Anne Cook
Robert Elfant
Nancy Elfant
Elizabeth A. Fernández-Viña
Elizabeth H. Gemmill
Jennifer Harmelin
Richard Harris
Valerie I. Harrison
Ann Marie Horner
Holly Kinser
Dr. Saifuddin T. Mama
Amy L. Murphy
Terrence J. Nolen
Brian Pinheiro
Hon. Rosalyn K. Robinson
Charles H. Rose
Camille Rosenberg
Monica Rosenthal
Genvieve Shields
Lee van de Velde
Steve Wolfson
Diane Dalto Woosnam
Ellen Yin

Board Executive Committee

Michael Donato, *Chair*
Michael MacFarland
Rayenne A. Chen
Robert Elfant
Jennifer Harmelin
Dr. Valerie Harrison
Holly Kinser
Richard L. Maimon
Genvieve Shields
Lee van de Velde

Finance Committee

Michael MacFarland, *Chair*
Juan De León Domenech
Elizabeth Gemmill
Ann Marie Horner
Dan Hilferty
Daniel Krewson
Harvey Swedloff

Board Development Committee

Rayenne Chen, *Chair*
Valerie Harrison, *Chair*
Michael Donato
Robert Elfant
Holly Kinser
Saifuddin T. Mama

Board Development Committee (cont.)

Lee van de Velde
Diane Dalto Woosnam

Personnel Committee

Michael Donato
Elizabeth H. Gemmill
Richard Harris
Michael S. MacFarland
Charles H. Rose

Engagement Committee

Jennifer Harmelin, *Chair*
Genvieve Shields, *Chair*
Lee van de Velde
Anne Cook
Elizabeth Fernández-Viña
Camille Rosenberg
Hope Yursa

Facilities Committee

Richard L. Maimon, *Chair*
Mike Green
James Kronzer
John J. McCawley
H. Hetherington Smith
Chris van de Velde

Equity, Diversity, and Inclusion (EDI)

Rayenne Chen
Anne Cook
Joy L. De Jesús
Robert Elfant
Kash Goins
Richard Harris
Dr. Valerie Harrison
Zuhairah McGill
Amy L. Murphy
Bi Jean Ngo
Terrence J. Nolen
Hon. Judge Rosalyn
Robinson
Clayton Tejada
Orelí Uzdavinis

Young Friends Committee

Chelsea Beytas
Kathleen Johnson
Alexa Josaphouitch
Meredith McGovern
Jenny Morrison
Mandie Spindler
Diana Zalewski



Staff

Artistic	Producing Artistic Director.....	Terrence J. Nolen
	Associate Artistic Director.....	Jonathan Silver
	Artistic Assistant.....	Nick Hatcher
	Commissioned Playwrights.....	Kash Goins, Robi Hager Rogelio Martinez, Irais Ann Reilly, James Ijames
Administrative Management	Managing Director.....	Amy L. Murphy
	General Manager.....	Clayton Tejada
	Business Manager.....	Paola Cruz
	Audience Services Manager.....	Tanner Richardett
	Facilities and Office Manager.....	Larry Brooks
	Arden Professional Apprentices.....	Sara Alvidrez, Hardik Gupta, JT Hawkes Amelia Kovach, Madison Luckey, Fable Rowell
Marketing	Director of Marketing and Communications.....	Mike Hogue
	Communications Manager.....	Aseal Saed
	Marketing Manager.....	Alexa Perillo
	Marketing and Group Sales Associate.....	TJ Harris
	Dr. Mindy Goldberg Rose Intern.....	Emily Lathers
Development	Publicist.....	En Route Marketing
	Director of Development.....	Jessica Abel
	Development Coordinator.....	Tylar Benedetto
	Manager of Institutional Giving.....	Gwyn Garrison
	Manager of Individual Giving.....	Orelí B. Uzdavinis
Education	Dr. Mindy Goldberg Rose Intern.....	Bell Pendon
	Director of Education.....	Lauren Diesch
	Education Outreach Manager.....	Josh Thorps
	Arden Drama School Manager.....	Elise D'Avella
	Education Associate.....	Francine Odri
Front of House	Teaching Artists.....	TJ Harris, Jessica Money, Julianna Babb, Cindy Paul, Andrea Rose Cardoni, Zoe Hollander, Katherine Perry, Adam Howard, Eliana Pinckney, Gina Giachero, Jake Collins, Jordan Hunter-Fidalgo, Lexi Schreiber, William Daniels, Hallie Berger, Riley Irvine, Lydia Hassell, Abby Weissman, Leah Cohen, Jenna Kuerzi, Campbell O'Hare, Ryan Touhey, Alexis Goode, Lize Meisenzahl, Curtis Harris, MK Prophet, Gabe Moses, Kevin Muchetti, Lauren Krigel, Maddy Gillespie, Aurelien Eulert
	Box Office Manager.....	Jason Blacketer
	Assistant Box Office Manager.....	Amanda Adams
	House Manager.....	Erin O'Toole
	Front of House Associate.....	Catey Midla
Production	Front of House Leads.....	Emily Hernandez, Skyler Gonzalez
	Front of House Assistants.....	Aaron Szabo, Adiah Hicks, Becky Fleckner, Chelsey Gaskins, Chloe Minicucci, D Cousineau, Em Brandon, Glynnis Nadel, Jenny Glickman, KC Casey, Laura Duffy, Lillian Redding, Mads Klemm, Margaux Cattelona, Morgan McNulty, Victoria Silva, Zoe Hollander
	Production Manager.....	Kate Nelson
	Technical Director.....	Evan Lewis
	Assistant Technical Director.....	John Winter
	Electrics Supervisor.....	Martin Stutzman
	Sound Supervisor.....	John Kolbinski
	Costume Shop Manager.....	Bridget Brennan
	Assistant Costume Shop Manager.....	Mae Merkle
	Properties Supervisor.....	Kelly McLaughlan
	Charge Scenic Artist.....	Brit Bannon
	Production Assistant.....	Ta'Liyah Thomas
	Assistant Lighting Designer.....	Ethan Paone
	Deck Crew.....	Jessica Merkins
	Drill Team/Step Consultant.....	Taylor J. Mitchell
	Intimacy Consultant.....	Abby Weissman
	Assistant to the Stage Manager.....	Fable Rowell
	Audio Engineer.....	AJ Bloomfield
	COVID-19 Safety Managers.....	Clayton Tejada, Jonathan Silver
	Electrics Programmer.....	Ethan Paone
	Dr. Mindy Goldberg Rose Intern.....	Sydney Sjolín

CREATIVE REAL ESTATE FOR CREATIVE PEOPLE



The CCSJ Team is proud to continue our *Support the Arts Initiative*, donating to local performing arts organizations for every closing. Whether you're on-stage, behind the scenes, or in the audience, choose the REALTOR[®]s who support our arts community.



JAMES SUGG

REALTOR[®]

267.303.2827

sugg@ewrhomes.com



BENJAMIN CAMP

REALTOR[®] & CCSJ Team Leader

610.220.8550

ben@ewrhomes.com

THESTELLARCHOICE.COM | 215.893.9920

2000 PINE ST, PHILADELPHIA, PA 19103

Elfant &
Wissahickon
- REALTORS[®] -