

ARDEN CHILDREN'S THEATRE

# THE HOBBIT

Based on the novel by  
**J.R.R. Tolkien**

Adapted for the stage by

**Greg Banks**

Directed by

**Rebecca Wright**



**Arden**  
THEATRE CO

**APRIL 2 - MAY 25**

On the Arcadia Stage

Honorary Producers:  
Ann Marie and  
Terry Horner

# ARDEN SUMMER CAMP

For Kids and Teens



Action packed theatre classes taught by theatre professionals!

Learn more and register online at [ardentheatre.org](http://ardentheatre.org)



Plus, the Summer Teen Musical is back!



For Grades 9-12

# WELCOME

From the Producing Artistic Director



If you are lucky, life is full of adventures.

Think of all the adventures you've already had: Going to school for the first time. Trying a new activity you've never done before. Eating something different. Going to a brand-new place. When you go on an adventure, you have people who guide you - parents and teachers, grandparents, maybe older siblings or cousins. And you have friends join you along the way making the adventure even better. These adventures make your world bigger, more exciting — and help you figure out who you are and what's important to you.

*The Hobbit* is a great adventure story. There is a teacher to help. Friendships made. And lots of excitement! Bilbo could decide to stay home where he is comfortable but decides to be brave and go out into the world. What a great lesson for us all.

In addition to Arden Children's Theatre, we also offer camps and classes for kids of all ages. Coming up is Arden Summer Camp! We have camps in acting, singing, comedy, dancing and so much more. One-week camps, two-week camps, and special workshops. A friend once said that Arden Summer Camp is like Hogwarts for kids who like theatre. That's the goal. We want to be a place where you can be creative, make new friends, and have fun. Come check it out!

Watching plays about great adventures prepares you for the adventures to come in your life. Thank you leaving your home and coming to see *The Hobbit*. We are so glad you are here!

# A Message from our Honorary Producers



Welcome to the Arden — I hope you're ready for an adventure! J. R. R. Tolkien has been popularly identified as the "father" of modern fantasy, and it all started with a children's book, *The Hobbit*. Tolkien's stories are filled with a whole host of fantastical creatures, magic, and a vivid world of epic proportions to ignite the imagination. Yet, this story isn't mere fantasy, and there are real life lessons to be learned as we join the humble hobbit, Bilbo Baggins, on his quest.

I think we all can identify with Bilbo. He feels safe and sound at home, surrounded by his creature comforts. He's reluctant to venture beyond what he knows, to face strange places and creatures who are very different from him. But Bilbo shows us that with a little courage, even the smallest among us can become heroes. This is a message that children today—and all of us, really—need to hear and be reminded of. As we venture through our daily lives, we all encounter our own "trolls," and we may even have to slay a few dragons along the way. It's up to us to be brave and decide what's right.

We are proud to once again support the Arden as Honorary Producers of *The Hobbit*. Arden Children's Theatre—and all of Arden's programming for kids—holds a very special place in our hearts. Over the past 15 years, we have created many fond memories here at the Arden with our children, and now our grandchildren. (This picture is of Jo Vito Ramírez as Peter Pan and Campbell O'Hare as Wendy, with me and my two granddaughters from the UK, who couldn't WAIT to see *Peter Pan* this past winter.) We admire the creativity and joy of the work on stage, as well as Arden's commitment to enriching the lives of school children across Greater Philadelphia through meaningful arts education and access.

We hope you enjoy the performance today, and that Bilbo's journey leaves you feeling inspired to be a hero in your own lives.

**Ann Marie and Terry Horner**

Intentionally different college prep

[www.crefeld.org](http://www.crefeld.org)

Chestnut Hill, Philadelphia

## ACCESSIBILITY SERVICES

The Arden complies with all applicable federal, state, and local statutes and laws to ensure accessibility to individuals with disabilities who visit our theater. We invite you to visit [ardentheatre.org/plan-your-visit/accessibility](http://ardentheatre.org/plan-your-visit/accessibility) for more details about our services and offerings.



### Accessible Seating & Seating Requests

Removeable seats for wheelchairs & Accommodations for comfort, mobility, & hearing or vision needs



### Assistive Listening Devices (ALDs)

Amplification of all onstage sounds. Ask Box Office to borrow. Available with headphones or a t-coil neck loop.



### Open Captioning (OC)

Text display of all dialogue and sounds. Available select Friday & Saturday performances.



### Audio Description (AD)

Live verbal commentary of all visual elements. Ask Box Office for access. Available select Friday & Saturday performances.



### Social Narratives

Booklets with step-by-step expectations of your experience at the Arden from arrival to departure.



### \*NEW!\* Smart Caption Glasses (SCG)

Wearable, customizable closed captioning glasses. Available 1 week after Opening Nights. Ask Box Office to borrow.



### Large Print Programs

Enlarged-text printed programs for low-vision patrons. Ask Box Office to borrow.



### Shadow American Sign Language (ASL) Interpretation

Live ASL interpretation shadowing the action of the show. Available at select Children's Theatre performances.



### Service Dogs

We welcome patrons with Service Dogs (and Service Dogs in Training) to attend our performances

We encourage any feedback and suggestions regarding our accessibility services to ensure we're doing the best we can. Please contact Tanner Richardett, Audience Services Manager, at [trichardett@ardentheatre.org](mailto:trichardett@ardentheatre.org)

ARDEN CHILDREN'S THEATRE

# THE HOBBIT

Based on the novel by  
J.R.R TOLKIEN

Adapted for the stage by  
GREG BANKS

Licensed by **Middle-Earth Enterprises**  
Originally commissioned and produced by  
**Children's Theatre Company**  
Produced by special arrangement with  
**Plays for New Audiences**

Scenic Designer  
SASHA JIN SCHWARTZ

Costume Designer  
NIKKI DELHOMME+

Lighting Designer  
MARIA SHAPLIN

Sound Designer & Composer  
JORDAN MCCREE

Assistant Director  
JOVITO RAMIREZ

Stage Manager  
LYNDSEY CONNOLLY\*

Directed by REBECCA WRIGHT

---

**Honorary Producers:**  
Ann Marie and Terry Horner

THE VIDEOTAPING OR MAKING OF ELECTRONIC OR OTHER AUDIO AND/OR VISUAL RECORDINGS OF THIS PRODUCT AND DISTRIBUTING RECORDINGS OR STREAMS IN ANY MEDIUM, INCLUDING THE INTERNET, IS STRICTLY PROHIBITED. A VIOLATION OF THE AUTHOR(S)'S RIGHTS AND ACTIONABLE UNDER UNITED STATES COPYRIGHT LAW.



Arden Theatre Company receives state arts funding support through a grant from the Pennsylvania Council on the Arts, a state agency funded by the Commonwealth of Pennsylvania.



+ Member of United Scenic Artists  
Local USA 829

\* Member of Actors' Equity Association,  
the Union of Professional Actors and  
Stage Managers in the U.S.

# A Note

## From the Director



*The Hobbit* is the story of a very small creature on his first adventure in a very big world. Bilbo, a humble hobbit accustomed to a quiet and comfortable life, finds himself on a wild quest full of new landscapes and complex experiences. He's full of doubts, true of heart, in over his head, and ultimately triumphant--but only because he's willing to connect across difference, challenge himself, and work for what he knows is right.

Bilbo's journey provides him with opportunities to learn about friendship and loyalty, courage and ingenuity, problem-solving and persistence. And learn he does! The trials and tribulations of his time with the dwarves tests him on every level. But his kindness and curiosity make it possible for him to transcend his assumptions about his companions, the new terrains he encounters, and himself.

In these troubled times, the story of Bilbo's moral courage, empathy, and foray into interspecies collaboration has a lot to teach us. In his world, the most malevolent forces are dragons who hoard wealth and goblins who spread violence. While the evils in our world are far larger and trickier to overcome than dragons and goblins, Bilbo's victory—in partnership with the well-intentioned dwarves, elves, eagles, and other friends—reminds us that our interconnectedness, our willingness to stand up for each other, and our gentleness are the best tools we have with which to build a better world.

We are all small creatures in a big world, and we all contain multitudes. Like Bilbo and his comrades, we can work together to protect and cultivate what we value the most. We can embark on adventures, defeat dragons, share power, distribute wealth, and return home with the real treasures: perspective, compassion, connection, friendship, and peace.

# Cast of Characters

Bilbo..... Eliana Fabiyi\*  
Kili/Smaug/Troll 2/Goblin 2/Wolf 2/Eagle 2/Dwarf Army/Guard/Wood Elf..... Ciera Gardner\*  
Balin/Bard/Troll 3/Goblin 3/Wolf 3/Eagle 3..... Nathan Alford-Tate\*  
Thorin/Goblin 1/Wolf 1/Eagle 1..... Kelly McCaughan\*  
Gandalf/Gollum/Elven Queen/Bombur/Troll 4/Eagle 4/Guard..... Sean Lally\*

## UNDERSTUDIES

Mersha Wambua (*Bilbo*), Jameka Wilson (*Kili/Smaug/etc.*),

Andrea Rose Cardoni (*Balin/Bard/etc.*), Zoe Hollander (*Thorin/etc.*), Triston Haq (*Gandalf/Gollum/etc.*)



Arden Theatre Company is a professional company employing members of Actors' Equity Association.  
\*Member of Actors' Equity Association, the Union of Professional Actors and Stage Managers in the United States.

Please check houseboards for any program changes.

Taking pictures and/or making visual or sound recordings is expressly forbidden.

Actors' Equity Association (AEA), founded in 1913, represents more than 45,000 actors and stage managers in the United States. Equity seeks to advance, promote and foster the art of live theatre as an essential component of our society. Equity negotiates wages and working conditions, providing a wide range of benefits, including health and pension plans. AEA is a member of the AFL-CIO, and is affiliated with FIA, an international organization of performing arts unions. [www.actorsequity.org](http://www.actorsequity.org)



**ELIANA FABIYI** she/her (Bilbo) Arden: Jim Hawkins/Emily in *Treasure Island*, Maureen Peal in Toni Morrison's *The Bluest Eye*, Tootles/Jane in *Peter Pan*, Fairy/Musician in *A Midsummer's Night Dream*. Regional: *Our Town* (People's Light); *Homeworld*, *Philly Baby Jam* (Ninth Planet); *A People, Peaceable Kingdom* (Orbiter 3). As creator: *La Otra\*\** (w/ Tanaquil Márquez & 1812 Productions), and *Socrates, an Odyssey (a puppetry epic)*. Education: École Internationale de Théâtre Jacques Lecoq, Théâtre aux Mains Nues, Arden Professional Apprentice (Class 22), Case Western Reserve University. Love to my family!



**CIERA GARDNER** they/them (Kili/Smaug/etc.) Arden: Red/Delivery Person in *Red Riding Hood*, Understudy for Harriet Tubman in *My General Tubman*. Regional: Howie in *Our Town*, Joan in *Fun Home* (New Light Theatre); Sam in *Nosejob* (Lightning Rod Special); Tiffany in *The Climb* (Interact Theatre Company); Lady Macbeth in *Macbeth* (Delaware Shakespeare); Tommy in *Wine in the Wilderness* (Philadelphia Artists' Collective); Lady Anne in *Richard III* (Theatre in the X); Prentiss in *Peter and the Starcatcher* (Theatre Horizon); Nina in *The Gap* (Azuka Theatre). Training: BFA Acting '16 (University of the Arts), Headlong Performance Institute '15. For my younger self and other folks with adventurous hearts. Love you, Mom!

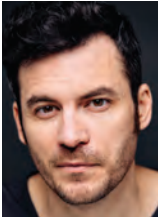


**NATHAN ALFORD-TATE** he/him (Balin/Bard/etc.) Arden: *Pinocchio*, *The Snowy Day*. Regional: *Cymbeline* (Delaware Shakespeare); *The American Revolution* (Theater Unspeakable); *Meet James Forten* (Museum of the American Revolution); *Permission to Monster* (Almanac Dance Circus Theatre); *The Ever Present* (Theatre Exile); *Pipeline* (South Camden Theatre Company); *Rachel* (Quintessence Theatre); *Fourteen* (The National Constitution Center); *Fly Eagles Fly* (Tribe of Fools). Education: University of the Arts/Pig Iron, MFA Devised Performance; Western Michigan University, BFA Theatre Performance. Thank you to my family for their continual support and unending faith in me.



**KELLY MCCAUGHAN** she/her (Thorin/etc.) Arden Debut. Off-Broadway: Self in *Catholic Guilt* (Soho Playhouse); Regional (selected): Dolly in *One Man, Two Guvnors* (Delaware Theater Company); Self in *Catholic Guilt* (Theatre Exile); Thersites in *Troilus and Cressida* (Revolution Shakespeare); Martha in *Plum Bun*, Katerina in *Delirium* (EgoPo Classic Theater). Television: *Crashing* (HBO); *Servant* (Apple TV+). Education: Indiana University of Pennsylvania, BA Theatre. Big love and thanks to fellow artists, friends and family for the support and inspiration. [www.kelly-mccaughan.com](http://www.kelly-mccaughan.com) | IG: [kelly\\_mccaughan](https://www.instagram.com/kelly_mccaughan)





**SEAN LALLY** he/him (Gandalf/Gollum/etc.) Arden: Tom Wingfield in *The Glass Menagerie*, Sharpe/Tom Wintour/King James I in *Equivocation*, Sher Khan/Vulture/Monkey/Wolf in *The Jungle Book*, Robin Hood in *Robin Hood*, Mike Hogan in *A Moon for the Misbegotten*, Crooked-Fingered Jake in *A Threepenny Opera*, Tybalt in *Romeo and Juliet*. Off-Broadway: Robert Acosta/Ivan Medina in *In Conflict* (The Culture Project/Temple University). Philadelphia Regional: Ray Dooley in *The Beauty Queen of Leenane*, Romeo in *Romeo and Juliet* (Lantern Theater Company); Michael in *Fat Cat Killers* (Flashpoint Theatre Company); Biff in *Death of a Salesman*, Pete Gint in *Gint*, Tytyl in *Bluebird*, Kip in *Something Cloudy, Something Clear*, Ernst in *Spring Awakening* (EgoPo Classic Theatre); Joe Dallesandro in *Andy: a Popera* (The Bearded Ladies Cabaret/Opera Philadelphia). Seattle Regional: Elias in *John* (ArtsWest); Jonathan Safran Foer in *Everything Is Illuminated* (Book-It Repertory). Education: Temple University, BA Philosophy. Thanks to my family, friends and co-workers for their constant support. And special thanks to my love, Tara!

**GREG BANKS** (Playwright) Greg Banks' work as an actor, writer and director has taken him all over the world from Singapore to Seattle via the Arctic Circle. Greg's plays include *Tir Na N'og* (Travelling Light/West End, Broadway, Touring Winner of Samuel Beckett Award/TMA nominee for best play for young people 1998), *Why The Whales Came* (Plymouth Theatre Royal/ Theatre Alibi/West End) *Dorian Grey* (American Drama Group/International touring) *Too Many Cooks* (Travelling Light) *Huck Finn*, *Pinnocchio*, *Robin Hood*, *Antigone* (Minneapolis Children's Theatre) *Me and My Shadow* (Theatre Alibi) *Snow Queen* (Norden farm) *Arabian Nights*, *Hansel and Gretel*, *Keep on Moving*, (Fair Game Theatre.) He has directed for many companies including The Bristol Old Vic (*Endgame*), The Unicorn Children's Theatre London (*The Wizard of Oz*), Minneapolis Children's Theatre (*Romeo and Juliet*. Winner of the 2009 Ivey award for Direction and voted best play of 2009 by *Twin Cities.com*, *Antigone*, *Huck Finn*, *Pinnocchio*, *Robin Hood*) Vedogon Theatre, Moscow (*Comedy Of Errors*) American Drama Group (*The Great Gatsby*.) The Birmingham Stage Company (*Kensukes Kingdom*; nominated for a 2006 T.M.A. award, *Treasure Island*, *Why The Whales Came*), Polka Children's Theatre, (*Just So by Jamila Gavin*) New Perspectives, Travelling Light (*Stones*, *Tir Na N'og*, *Too Many Cooks*), M6 Theatre Company (*Forever*, *Peacemaker*, *Trouble*), I157 Performance Company, Seattle Children's Theatre and The New York State Theatre (*Tempest*, *King of Shadows by Adrian Mitchell*).

**REBECCA WRIGHT** she/her (Director) Arden: *Pinocchio*; *Red Riding Hood*; *Backing Track*; *An Iliad*; *Indecent*. Regional (selected): *Spiritual Experience*, *Perfect Day* (The Private Theater); *The Drag* (EgoPo); *Wig Wag* (Emily Bate); *Head Over Heels* (Theater Horizon); *Other Orbits*, *This Is On Record*, *We Are Bandits* (Applied Mechanics); *Always the Hour*, *At Home With the Humorless Bastard* (Annie Wilson); *The Wild Duck*, *Saint Joan*, *The Metamorphosis* (Quintessence Theater Group); *The Gap* (Azuka Theater); *Peaceable Kingdom* (Orbiter 3); *Marcus/Emma* (InterAct Theatre Company.) New York: *Articles of Faith* (Cynthia Hopkins); *Sarah Flood in Salem Mass* (The Flea); *Sophie Gets the Horns* (The Riot Group.) Rebecca is a founding company member of Applied Mechanics, a two-time recipient of the Independence Fellowship in the Arts, and a 2024 Pew Fellow. Dedicated to Vern and Ida, with thanks for all of the adventures.

**J. VITO RAMIREZ** they/them (Assistant Director) Arden: Peter Pan in *Peter Pan*. Wolfgang in *Red Riding Hood*, Fred in *The Snow Queen*, Avery Arable in *Charlotte's Web*, Peter Pan in *Peter Pan* (2018), Daniel/Bloodbottler/Headmaster/Head of Army in *The BFG*. Regional: Petruccio in *The Taming of the Shrew*, Pericles in *Pericles, Prince of Tyre* (Shakespeare in Clark Park); Neoptolemus in *The Cure at Troy* (Quintessence Theatre Group); Claudio in *Much Ado About Nothing* (Delaware Shakespeare); Rigel in *Gumshoe* (New Paradise Laboratories). Training: B.A. Theatre, Haverford College. Jo is a musician, visual artist, and builder. To see more works, please visit [jovitoramirez.com](http://jovitoramirez.com) - for exclusive content, visit [patreon.com/jovito](http://patreon.com/jovito). Special thanks to the Arden and the FSS crew. Love always to Juji of The Sea

**SASHA JIN SCHWARTZ** (Set Designer) Arden: *Pinocchio*. Regional (selected): *Dragon Lady* (Pittsburgh Public Theater); *Fat Ham*, *Birthday Candles* (City Theatre); *Selling Kabul* (Northern Stage); *Little Shop of Horrors* (Virginia Theatre Festival); *The Thanksgiving Play* (Dorset Theatre Festival); *the dance floor, the hospital room, and the kitchen table* (Kelly Strayhorn Theater); *Off Peak* (Hudson Stage Company at 59e59). Education: Carnegie Mellon School of Drama, BFA. Sasha is a Prague Quadrennial Featured Emerging Designer, Theatre Communications Group Rising Leader of Color, and Pittsburgh Children's Museum F.I.N.E Artist In-Residence. Her understanding of space and how and where we feel 'at-home' is shaped heavily by her mixed immigrant family. [www.sashaschwartzscenic.com](http://www.sashaschwartzscenic.com)

# Who's Who

**MARIA SHAPLIN** (Lighting Designer) designs for many Philadelphia-based companies including Applied Mechanics, The Riot Group, Swim Pony Performing Arts, InterAct Theatre Company, Arden Theatre Company, The Wilma Theater, New Paradise Laboratories, The Berserker Residents, and 1812 Productions. Education: Temple University, MFA; Hampshire College BA Anthropology and Sociology. Maria is the co-founder of Applied Mechanics, a company who devises immersive, multi-narrative performance art. Maria is the recipient of a 2019 Pew Fellowship in the Arts. [www.mariashaplin.com](http://www.mariashaplin.com)

**NIKKI DELHOMME** (Costume Designer) Arden: *Indecent*. NYC/Regional: Over 100 designs with companies including Trinity Repertory Company, Barrington Stage Company, A Noise Within, Maltz Jupiter Theatre, Inc. Yale Repertory Theatre, Bedlam Theatre, Santa Cruz Shakespeare, Pig Iron, Theatre Company, Applied Mechanics, People's Light and others. Film/Television: Assistant on *True Blood* (HBO), *Super Sportlets* (Nickelodeon), and *Party Down* (Starz). Education: MFA Yale University, BFA Carnegie Mellon, proud member of USA829.

**JORDAN MCCREE** (Sound Designer & Composer) Arden: *The BFG* (*Big Friendly Giant*), *Backing Track*, *Snowy Day*, *My General Tubman*, *An Iliad*. Off Broadway: *A Woman Among Women* (New Georges/Bushwick Starr); *Grief Hotel* (Clubbed Thumb/The Public Theater); *we come to collect: a flirtation with capitalism* (The Flea). Regional: *Half-God of Rainfall*, *Good Person of Setzuan*, *Eternal Life Part 1*, *Fat Ham*, (2021 World Premiere) (Wilma Theater); *fallawayinto:corridors of Rememory* (Ninth Planet), *The Comeuppance* (Woolly Mammoth/Wilma Theater), *Cost of Living* (Philadelphia Theatre Company) Film/Television: *The World Takes* (short film, Eight Flow Studio), *The Karamazovs* (Village Park Productions). They were one of the 2022 grant recipients to the I/52 Project. They are also a member of Philly-based, Barrymore Award winning, hip hop collective, ILL DOOTS. Their album, *Divine Transmission*, is available everywhere.

**LYNDSEY CONNOLLY** (Stage Manager) Arden: Stage Manager for *Peter Pan*, *The Lehman Trilogy*, and *The BFG* (*Big Friendly Giant*), Assistant Stage Manager for *Once on This Island*, *Assassins*, and *Every Brilliant Thing*, Deck Crew for *Clyde's*. Regional: Stage Manager for *the pigeon* (The Strides Collective); Stage Manager for *Hannah + The Healing Stone* (The TerraNOVA Collective). Education: Entertainment and Arts Management with a concentration in Theatre (Drexel University).

**TERRENCE J. NOLEN** (Producing Artistic Director) is Co-founder and Producing Artistic Director of Arden Theatre Company. Favorite Arden productions include all-Philadelphia casts of *August: Osage County*, *Death of a Salesman*, *The Grapes of Wrath*, and *Hedda Gabler*; and such musicals as *Next to Normal*, *Sweeney Todd: The Demon Barber of Fleet Street*, *Pacific Overtures*, *Violet*, and *Caroline, or Change*. Terry directed the inaugural production of Arden Children's Theatre, *Charlotte's Web*. He has directed seven world-premiere plays by Michael Hollinger, three by Dennis Raymond Smeal, three by Michael Ogborn, two by Rogelio Martinez, and Bruce Graham's *Something Intangible*. Terry has been nominated for 27 Barrymore Awards for his directing work at the Arden and received awards for *The Baker's Wife*; *Sweeney Todd*; *Opus*; *Winesburg, Ohio*; *Assassins*; *Something Intangible*; and *Fun Home*. He directed Michael Hollinger's *Opus* at Primary Stages in New York and was nominated for a Lucille Lortel Award for Outstanding Director. His short film *The Personal Touch* was nominated for an Emmy Award.

**AMY L. MURPHY** (Managing Director) A Philadelphia native, Amy co-founded the Arden in 1988 with Terrence J. Nolen and Aaron Posner. She is especially proud of the Arden Professional Apprenticeship program and its contribution to the Philadelphia cultural community. She completed the Executive Program for Nonprofit Leaders-Arts. Amy has served on the Board of the Cultural Alliance and Theatre Philadelphia. She has served on panels for the National Endowment for the Arts, the New Jersey State Arts Council, Theatre Communications Group and the Philadelphia Cultural Fund. Amy was named a Hepburn Fellow 2008-9 by the Katharine Houghton Hepburn Center at Bryn Mawr College.

**ARDEN THEATRE COMPANY** Founded in 1988, Arden Theatre Company is dedicated to bringing to life great stories by great storytellers—on the stage, in the classroom, and in the community. We create and produce new work through the Independence Foundation New Play Showcase. The Arden Professional Apprenticeship program trains future theatre leaders, and Arden Drama School classes teach children and teens about the craft of making plays. Our access program, Arden For All, makes our work available to the entire community through subsidized tickets and books for economically disadvantaged young people, and our Arden Arts Scholarship Fund provides scholarships for Arden Drama School classes and camps. The Arden has received 13 *Philadelphia Magazine* "Best of Philly" Awards, the Arts & Business Council's Arts Excellence Award, six *City Paper* "Reader's Choice" Awards, four *Philadelphia Inquirer* "Theatre Company of the Year" citations, 77 awards and 440 nominations from the Theatre Philadelphia's Barrymore Awards for Excellence in Theatre, and was named "Best Theatre Company" by *Philadelphia Weekly* in 2009. Arden Theatre Company, a professional, nonprofit 501(c)(3) theatre company, is a member of the Theatre Communications Group, the League of Resident Theatres, Greater Philadelphia Cultural Alliance, Philadelphia Convention and Visitors Bureau, and Old City Arts Association.



*Fancy Ice Cream & Confections*

# THE FRANKLIN FOUNTAIN

116 Market Street · Old City · Philadelphia  
www.FranklinFountain.com · (215) 627-1899



## GROW YOUR OWN WAY

Serving students  
who learn  
differently in  
grades 1-8.

Creating confident  
and competent  
learners since  
1970.



[BENCHMARKSCHOOL.ORG](http://BENCHMARKSCHOOL.ORG)

*"Benchmark presented me with opportunities to succeed by teaching me different strategies and showing me that education didn't need to be a struggle. I can say that, without a doubt, I never would have succeeded academically without Benchmark."*

*-Dr. Alex Krenz '03*



# We Go Further

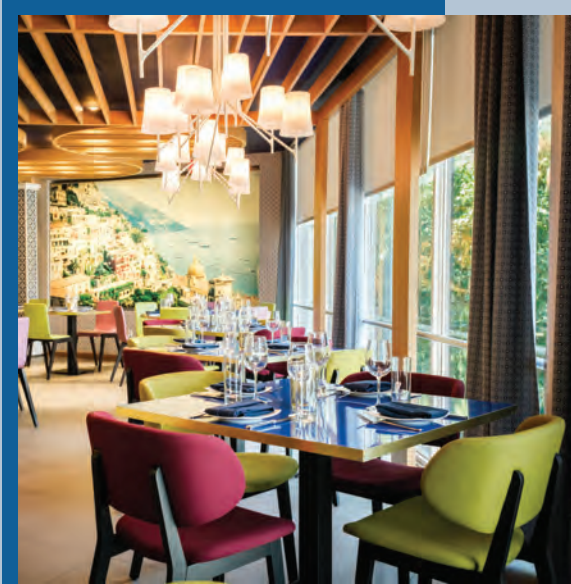
**Lower School • Nursery-Grade 5**  
228 Old Gulph Road, Wynnewood, PA

**Middle & Upper School • Grades 6-12**  
1101 City Avenue, Wynnewood, PA

[friendscentral.org/visit](http://friendscentral.org/visit)

# POSITANO COAST

ENJOY DINNER IN THE HEART OF OLD CITY  
BEFORE OR AFTER YOUR SHOW AT THE ARDEN!



**POSITANO COAST**  
BY ALDO LAMBERTI

212 Walnut St, 2nd Floor, Philadelphia  
215-238-0499 | [positanocoast.net](http://positanocoast.net)

\*Arden Patrons will receive a 10% food discount with proof of tickets before or after the show.

# Bilbo & Gollum's Riddles

In the play, Gollum challenges Bilbo to a riddle competition. See if you can solve them before the play, and listen for the riddle Gollum asks when you're watching! Unscramble the answers in the cloud!

What has roots nobody sees,  
Is taller than trees,  
Up, up it goes,  
And yet never grows?

ouimatnn

This thing all things devours:  
Birds, beasts, trees, flowers;  
Gnaws iron, bites steel;  
Grinds hard stones to meal;  
Slays king, ruins town,  
And beats high mountain down.

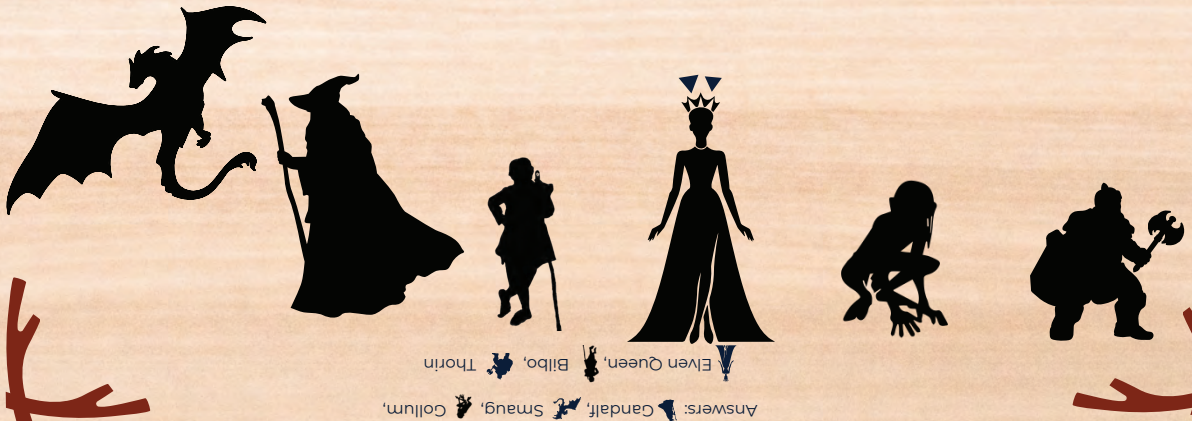
meit

Answers: Mountain, Time

## Match the Characters

Match the names in the word bank to the character shadow. Then, see if you can find our version of these characters in the show!

DWARF "THORIN"	WIZARD "GANDALF"
DRAGON "SMAUG"	ELF "ELVEN QUEEN"
CREATURE "GOLLUM"	HOBBIT "BILBO"



*inspiring*  
A LIFE OF BEAUTY



Wood-Mode designers bring your vision to life through creativity and years of product and technical training. For more than 75 years, Wood-Mode has been developing products and training that inspire our designers, so they can inspire you.

**Wood-Mode**<sup>®</sup>  
FINE CUSTOM CABINETS

Visit [Wood-Mode.com](http://Wood-Mode.com) to get inspired,  
explore and learn more.

**Wall & Walsh, Inc.**  
**(610) 789-8530**  
**[wood-mode.com](http://wood-mode.com)**

8320 West Chester Pike  
Upper Darby, PA 19082

# 2024/25

## DINING PARTNERS

Restaurants in Old City and surrounding neighborhoods are ready to welcome you!  
We recommend these restaurants that support the Arden.

---

### **Café Tolia\***

26 N 3rd Street  
267.687.2533  
cafetolia.com  
@cafetolia

### **Calandrino's Old City Vino\***

110 N 2nd Street  
267.930.7443  
oldcityvino.com  
@oldcityvino

### **Cuba Libre\***

10 S 2nd Street  
215.627.0666  
cubalibrerestaurant.com  
@cubalibrephiladelphia

### **The Franklin Fountain\***

116 Market Street  
215.627.1899  
franklinfountain.com  
@franklinfountain

### **Fork**

306 Market Street  
215.625.9425  
forkrestaurant.com  
@forkrestaurant

### **Forsythia\***

233 Chestnut Street  
215.701.4883  
forsythiaphilly.com  
@forsythia\_philly

### **Fringe Bar\***

140 N Christopher Columbus Blvd  
215.375.7744  
fringebarphilly.com  
@fringebarphilly

### **High Street Philly**

101 S 9th Street  
215.625.0988  
highstreetonmarket.com  
@highstreethoagies

### **Khyber Pass Pub\***

56 S 2nd Street  
215.238.5888  
khyberpasspub.com  
@khyberpasspub

### **Las Bugambilias\***

15 S 3rd Street  
267.239.5673  
lasbugambiliasphilly.com  
@lasbugambiliasphilly

### **Mei Mei**

33 S 2nd Street  
267.979.3473  
meimeiphil.com  
@meimeiphilly

### **National Mechanics\***

22 S 3rd Street  
215.701.4883  
nationalmechanics.com  
@nationalmechanicsphilly

### **The Plough and the Stars\***

123 Chestnut Street  
215.238.0499  
ploughstars.com  
@theploughphilly

### **Positano Coast by Aldo Lamberti\***

212 Walnut Street 2nd Floor  
215.238.0499  
positanocoast.net  
@positanocoastphilly

### **Race Street Cafe\***

208 Race Street  
215.627.6181  
racesstreetcafe.net  
@racesstreetcafe

### **Royal Boucherie\***

52 S 2nd Street  
267.606.6313  
royalboucherie.com  
@royalboucherie

### **Triple Bottom Brewing**

915 Spring Garden St  
triplebottombrewing.com  
@triplebottombrewing

---

Restaurants with \* offer a special promotion to Arden patrons.  
Please ask your server for details/scan the QR code for more details.

For complete restaurant descriptions visit: [ardentheatre.org/dining](http://ardentheatre.org/dining)

Dining Partners as of 3/1/25



# Your support brings theatre to Philadelphia students

For the past **25 years**, supporters like you have helped us connect classrooms across Greater Philadelphia to high-quality theatre experiences and activities through our in-school arts residency and theatre access program, **Arden for All**.

**Q.** Each year, the Arden provides over \_\_\_\_\_ free tickets to underserved children and families in our community to both of our Arden Children's Theatre productions.

**a. 1,000   b. 2,500   c. 5,000   d. 10,000**

Answer: C

## Donate to Support Arden for All

Your gift will help provide arts-inspired education to children throughout Philadelphia!



[ardentheatre.org/donate](https://ardentheatre.org/donate)



**Did you know?** Arden for All (AFA), our in-school arts residency, is approved for **Pennsylvania's Educational Improvement Tax Credit (EITC) program**.

## Designate your tax dollars towards bringing theatre to classrooms across Greater Philadelphia!

### Significant Tax Savings

Receive a 90% PA state income tax credit and a 10% federal itemized charitable deduction.

### Direct Impact on Education

Directly support educational opportunities for students in need.

### Simple Process

The Arden has partnered with Friends of Education to make donating through EITC easy! Learn more at [pataxcredits.org](https://pataxcredits.org).

**Questions?** Please reach out to Jessica Abel at 215.922.8900 x 149 / [jabel@ardentheatre.org](mailto:jabel@ardentheatre.org).



# Corporate, Foundation & Government Support

## \$100,000 & above

Hamilton Family Charitable Trust  
PA Department of Community  
and Economic Development  
Rosenthal Family Foundation  
Shubert Foundation  
William Penn Foundation

## \$50,000 to \$99,999

Harmelin Media  
Wyncote Foundation

## \$25,000 to \$49,999

Anne M. and Philip H. Glatfelter III  
Family Foundation  
Bell's Market  
The Horace W. Goldsmith Foundation  
Independence Foundation  
PECO Energy  
Harold and Mimi Steinberg  
Charitable Trust  
The Victory Foundation

## \$10,000 to \$24,999

Action Karate  
Arcadia Foundation  
Comcast Corporation  
Fox Chase Bank Charitable Fund  
John Ciccone Playhouse Charities, Inc.  
The Sylvia W. and  
Randle M. Kauders Foundation  
Lincoln Financial Foundation  
Pennsylvania Council on the Arts  
The Suzanne Roberts Cultural  
Development Fund  
TD Charitable Foundation  
Truist  
Univest Financial  
Zeldin Family Foundation

## \$5,000 to \$9,999

Civic Foundation  
Connelly Access Foundation  
Cuba Libre+  
Ethel Sergeant Clark Smith  
Memorial Fund  
The Haley Foundation  
Janet Yaseen Foundation  
Philadelphia Activities Fund  
PNC Charitable Trust —  
Corrine R. and Henry Bower  
Memorial Trust  
Sun East Foundation

## \$2,500 to \$4,999

Charlotte Cushman Foundation  
Christopher Ludwick Foundation  
Elliott-Lewis Corporation  
Franklin Fountain+  
Fringe Bar+  
Fulton Bank  
Hamilton Family Foundation  
Greater Philadelphia Cultural Alliance  
Irene D. Cunningham Trust  
Las Bugambilias+  
Linda and David Glickstein Fund  
of the Philadelphia Foundation  
The Plough and the Stars+  
Positano Coast by Aldo Lamberti+  
TCF- The Community's Foundation

## \$1,000 to \$2,499

Alex J. Ettl Foundation  
Bendita Foundation  
BeneServ  
Cafe Tolia+  
Calandrino's Old City Vino+  
Dolfinger-McMahon Foundation  
Franklyn Rodgers Family Fund of  
the Philadelphia Foundation  
Forsythia+  
Global Atlantic Financial Group  
Growth Counsel LLC  
Hassel Foundation  
Khyber Pass Pub+  
Christian R. and Mary F. Lindback  
Foundation  
Mei Mei+  
National Mechanics+  
Race Street Cafe+  
Rittenhouse Foundation  
Royal Boucherie+  
Triple Bottom Brewing+

## Up to \$1,000

Actors' Equity Foundation  
Bryn Mawr Presbyterian Church Choir  
High Street Philadelphia+  
Paul L. Newman Foundation  
The Pew Center for Arts and Heritage  
The R. Andrew Swinney Presidential  
Achievement Fund of the  
Philadelphia Foundation  
Quaker Printing+  
Weavers Way Co-op+

## Employee Giving, Matching Gift, Donor Advised Fund Partners

American Online Giving Foundation  
AYCO Charitable Foundation  
Bank of America  
Bristol Myers Squibb  
Cadence Design Systems, Inc.  
The Chicago Community Foundation  
Chubb  
CIGNA Corporation  
Comcast Corporation  
DAFGiving 360  
Dell  
Dun & Bradstreet  
Equitable / AXA Foundation  
Every.org  
Exelon Corporation  
Fidelity Charitable  
Friends of Education  
Give Lively Foundation  
GlaxoSmithKline  
General Atlantic  
Global Atlantic Charitable Gift Fund  
Goldman Sachs  
Google  
GS Donor Advised Philanthropy Fund  
for Wealth Management  
Impact Assets  
Independence Blue Cross  
Independence Foundation  
Intel Foundation  
Jewish Communal Fund  
Johnson & Johnson  
JP Morgan Chase & Company  
Macy's/ Bloomingdale's  
McKesson Foundation  
McKinsey & Company  
Microsoft  
Morgan Stanley Gift Fund  
Merck Foundation  
National Philanthropic Trust  
PayPal Giving Fund  
PECO  
Penn's Way  
The Philadelphia Foundation  
Pfizer  
PSEG  
Radion Group, Inc.  
Renaissance Charitable Foundation  
Sap America, Inc.  
T. Rowe Price  
Thrivent Charitable Impact & Investing  
United Way  
Vanguard  
Vanguard Charitable  
William Penn Foundation



The  
**Sylvan Society**  
Arden Theatre Company

*Grounding the Present, Nurturing the Future*

The Sylvan Society recognizes individuals who support the Arden's work by making annual gifts of \$1,000 or more.

The special generosity of our members enables the Arden to tell great stories by having the resources to achieve the highest level of artistic quality.

\*This list represents gifts made through March 12, 2025\*

**Chestnut Grove**  
(\$25,000 and above)

Lois G. Brodsky  
The CHG Charitable Trust  
Nancy and Bob Elfant  
Kate Groark-Shields  
Michael Grove  
Alta and N. Peter Hamilton  
Joanne and Jon Harmelin  
Jessica Phelan  
Monica and Philip Rosenthal  
Lee and Chris van de Velde  
June and Steve Wolfson

**Sassafras Grove**  
(\$10,000 - \$24,999)

Rayenne A. Chen  
Christina and David Fryman<sup>^</sup>  
Elizabeth Gemmill  
Terry and Ann Marie Horner  
Robert and Risa Lavizzo-Mourey<sup>^</sup>  
Peggy Morgan and Patty Bowman  
Charles Rose  
Bernard and Camille Rosenberg  
Hether and Don Smith  
Harvey B. Swedloff

**Cherry Grove**  
(\$5,000 - \$9,999)

Anonymous  
Brian Abernathy and Elizabeth Ireland  
John R. Alchin and Hal Marryatt  
Richard and Kathleen Aregood  
Brenda and Marty Brenner  
Bob and Cheryl Carfagno  
Anne Cook and Russ Troyer  
Ann E. Diebold  
Deb Dorsey and Mike Green  
Stephen Falchek and  
John Offidani III~  
Richard Harris  
Eileen Heisman and Marty Tuzman  
Jim and Carolyn Hessinger  
Deborah R. Kravetz and Bill Robling  
Robin and Saifuddin Mama

Alexis and Ed Pappas  
Ceth and Sam Plum  
Rosalyn K. Robinson and  
Warren B. English  
Sid and Ruth Rosenblatt  
Sharon and Irv Shapiro  
Rosalyn and Stephen Weinstein  
Nancy Brent Wingo  
Hope Yursa

**Filbert Grove**  
(\$2,500-\$4,999)

Brett and Nan Altman  
Charles Arnao and Rosemary Watt<sup>^</sup>  
John and Amy Bitman~  
Karl Carter  
John Coleman and Diane Runyan  
John and Fern Culhane  
Robert M. Dever  
Michael A. and Edward C. Donato  
Laura Drake  
Paul and Judy Farber  
Shannon and Ted Farmer  
Elizabeth Fernández-Viña~  
Jill Fisch and John Gassenheimer  
Linda and David Glickstein  
Jennifer Harmelin  
Ed Hillis and Audrey Cohen  
Peter\* and Louise Kelly  
Kenneth Klothen and  
Eve Biskind Klothen  
Peter J. and Sandra Klugman  
Alan and Elaine Lindy, In Honor of  
Eileen Heisman Tuzman  
William A. Loeb\*  
Janice Madden  
Michael Mallee  
Barb and Don Matheson  
Linda McAleer  
Amy Murphy and Terry Nolen  
Joel and Bobbie Porter  
E. Graham and Elizabeth Robb  
John and Claire Rodgers  
Ellen Schwartz and Jeremy Siegel  
Keith and Jim\* Straw

**Mulberry Grove**  
(\$1,000-\$2,499)

Anonymous (6)  
Jerry Abelson and June Idzal  
Hank Adamczyk and Iris Melendez  
Becky and John Adams  
Diane and Katie Alessi  
Stan and Lisa Altman  
Winifred Anderson and Eric Lien  
Stephen and Jennifer Arms  
Bethany Asplundh  
Jim and Janet Averill  
Rhonda Ball  
Sheryl and Allen Bar  
Sheila Bell  
Jay and Nancy Berkowitz  
Linda and Mark Bernstein  
Bill and Brenda Bertrand~  
Sandy and David Beswick  
Ian and Ryane Nicole Beutler  
Andrew Bickford and  
Kristina Denzel Bickford  
Dr. Regina Blaszczyk and Lee O'Neill  
Louis Bluver  
Reid Bodek~  
Viola W. Bostic  
DeDe and Tony Brown  
Ann and David Brownlee  
Vicki and Russ Carlson  
Christopher and Jeffrey Carver  
Cordelia Clement  
Barbara Cobb  
Marc and Margie Cohen  
Kelly Colarelli<sup>^</sup>  
The Susan Lavine  
Coleman Charitable Fund  
Gregory L. Coleman  
Rebecca Davis and Mark Hoffman  
Ellen Deacon~  
Joy De Jesús and James Reynolds  
Tobey and Mark Dichter  
Carol Eicher  
Jonathan and Nancy Ellsworth  
Epstein Family Charitable Trust  
John Erickson and Harry Zaleznik

Lisa Fair and Bryce Quayle  
 Mr. and Mrs. Farenback-Brateman  
 Donna and Norman Faye  
 Dr. and Mrs. Mark Feitelson  
 Jeanne B. Fisher and Robert F. Lang  
 Carole M. Foley  
 Dieter and Sara W. Forster  
 Ellen and Tim Foster  
 Sandi Foxx-Jones  
 Lou and Rhoda Fryman  
 Chekemma Fulmore-Townsend  
 Julie and Tom Gennaro  
 Terry Graboyes  
 Kelly Grattan and John Lopez~  
 William and Joan Greenfield  
 The H and R Feinberg Family  
 Foundation  
 David C. and MaryJane Hackney  
 Ann and Glenn Haig  
 Anne Halkedis^  
 Ellen and Steve Harris  
 Hon. Lillian Harris Ransom  
 Dr. Valerie Harrison  
 Don and Lynn Haskin  
 Janis Hawes and Patrick Cunningham  
 Charles W. Head Jr. and  
 John A. Faggotti  
 Heidi Hertfelder^  
 Karen and Mark Hite  
 Deborah Hluchan  
 Phyllis Hochberg and Stuartz Katz  
 Diane Hofer  
 Jill Hyman Kaplan and Elliot Kaplan  
 Rachelle and Ron Kaiserman  
 Margie and Scott Kasner  
 Holly Kinser  
 Carol Kelley  
 Holly and John Kleimo  
 Steven Klein  
 Steven Knepper  
 Thomas and Anne Kohn

Bernadette Koller  
 Valerie Koscelnik  
 Marilyn and David Kraut  
 Mary Ellen Krober  
 J.C. and Melissa Lore  
 Cyana La Divertida  
 Mr. Robert Leventhal and  
 Ms. Cheryl Getty  
 Michael MacFarland  
 Richard Maimon and Susan Segal  
 Kathy McMaster  
 Lee Marks and Lisl Zach  
 John and Amy McCawley^  
 Peter and Laura  
 (nee Beckie) McQuaid  
 A.C. Missias  
 Joann Mitchell  
 Leslie and Michael Molder  
 Adam Mussell and Kate Whittington~  
 Marge Neff and Dan Winterstein  
 Kathleen Nelson and John Kromer  
 Arnold and Shelley New  
 Mary Ivy and Roger Noone  
 Michael Norris and Matt Varrato  
 Susan Odessey  
 Barbara Oldenhoff  
 Dan O'Neil and Travus White^  
 Frederick G. Ott  
 Robert Overell and Lisa Glasser  
 Don and Barbara Parman  
 Ronald and Pam Pontano  
 Laura and Douglas Pratt  
 David Pressel and Jill Feldman  
 Daniel Promislo  
 Aneira Puttaswamy  
 Rachel and Robert Reilly  
 Alan Reinach and Dana Perlman  
 Alice Reyes  
 Joy Rickabaugh  
 Franklyn and Cintra Rodgers  
 Jane A. Rose, CPA/PFS

Mike Salmanson and Tobi Zemsky  
 Gisèle Sambar Bathish  
 Becky Sassi  
 Geoff Schmidt and Marie Wong  
 Kim and Ross Schmucki  
 Terri Schwomeyer  
 Kathy Sernak~  
 Genvieve and Clete Shields~  
 Roy and Lee Shubert  
 Laura and Ron Siena  
 Paulette Singleton  
 Patricia Smialkowski and Ben Kaplan  
 Gayle and David Smith  
 Kathy and Don Smith  
 Valerie Smith^  
 The Spector Charitable Trust  
 Rudy Sprinkle and Andrea Barsevick  
 Mike and Shannon Stellato~  
 Robert and Sydney Stevens  
 William K. Stewart, Sr. Foundation  
 Eric Tamulonis and Deirdre Gibson  
 Stephen and Kathy Thompson  
 April J. Tvarok  
 Nancy Urbschat  
 Jason Vail  
 Thomas and Dawn Weiss^  
 Allison Weissman,  
 In Honor of Bebe Maritsis  
 Richard and Diane Woosnam  
 Ellen Yin+  
 Beth Zatuchni and Jerry Satlow~  
 Tom and Jackie Zemaitis

\* Denotes a deceased supporter  
 + Denotes a gift of goods or services  
 ^ Includes a matching gift  
 ~Includes a monthly gift

This list represents gifts made through  
 March 12, 2025

## THE LEGACY SOCIETY

Arden Theatre Company would like to recognize the following supporters who have included the Arden in their wills or estate plans. Their planned gift provides support which will help sustain the Arden's work for decades to come.

Anonymous  
 Ms. Peggy Anderson\*  
 Stanley Baurys\*  
 Ivy Bayard\*  
 Jane Berryman  
 Louis Bluver  
 Mary P. Burr  
 Pearl M. Carpel\*  
 Larry S. Friedman\* and  
 Dean H. Rishel  
 Ellis Ginsberg\*

Peter Gistelneck and Kim Bloom  
 Grace Goglewski and  
 Eric Schoefer  
 Gary R. Grob\*  
 Kelly Grattan and John Lopez  
 David C. and Mary Jane Hackney  
 Jim and Carolyn Hessinger  
 Suzanne and James Hill  
 Alan and Nancy Hirsig\*  
 Mary Ellen Krober  
 DawnLynne Kacer and Family

William Loeb  
 Donald Martin and Richard Repetto\*  
 Peggy Morgan  
 Tom Petro and Kris Messner  
 Kristen Phillips and Matt Schreck  
 Renee E. Polsky\*  
 Madeline Portnoy  
 Irene M. Reiter\*  
 Dr. Harry Rosenthal  
 Marilyn and Dean Staats  
 Carolyn and Richard Weaver

We hope you will consider including the Arden in your will or estate plans. To be recognized as a member of the Legacy Society or with questions regarding planned giving, please contact Jessica Abel, Director of Development, at 215.922.8900 x149.

# Thank You to Our Supporters

## \$500-\$999

Eileen Abel  
Sally and Michael\* Bailin  
Ellen Baxter and Robert Kavash^  
Eddy and Myra Bell  
Doug and Kristin Berman  
Jacob and Crystal Brogan  
Beth Burrell and David Sorensen  
Warren D. and Kaye L. Crown  
Michael Delaurentis  
Kathy Duffy  
W.Wallace and Joanne Dyer  
Jonathan Victor Edmondson^  
Paula Fuchsberg  
Dan Gannon  
Joel R. Gardner and Holly A. Phelps  
Janet Ginzburg and John Caskey  
Joseph and Jane Goldblum  
Grace Gonglewski and Eric Schoefer  
Marianne Green  
Patricia Haney  
Rhoda Harrison  
Steve\* and Jane Heumann  
James Hinrichs  
Cindy Hoffman  
Diane L. Hlywiak, Esquire  
Glenn Holsten  
Jane Kamp and Thomas Lloyd  
Barbara and Jerry Kaplan  
Ms. Leslie A. Kase  
Stephen Kieran  
Janice King  
Jane S. Kramer  
Ruth and Peter Laibson  
David Lerman and Shelley Wallock  
John and Martha Lubell  
Mary Ellen Marzullo~  
Adrienne Mendell  
Susan and Alan Miller  
Jackie Morrill and Mike Donahue  
Shannon Mullican and  
Kurt Schillinger^  
Brett Murphy^  
The Norman Family  
Sue and Tom O'Donnell  
Kimberly C. Oxholm and  
Carl Oxholm, III,  
In Honor of our grandchildren,  
Oliver and Eloise  
Claire and Lud Pisapia  
Janet and John Poth  
Paul Rabe and Cheryl Gunter  
Susan and Steve Reisbord  
Rachel R. Reynolds  
Robin Rifkin and Michael Silverman  
Daniel and Faye Ross,  
The Ross Family Foundation

Dan Rothermel and  
Michael Hairston  
Carole M. Saft  
Mauricio Saavedra and  
Joanna Sykes-Saavedra  
Larry and Carol Segal  
Joseph and Louise Shaffer^  
Polly Shaffer  
Thomas Sherman and  
Nancy Middlebrook  
Stanton and SaraKay Smullens  
Stuart and Paula Solomon,  
In Honor Of Sydney Solomon  
Kathleen A. Stephenson  
Susan and Jim Strohman  
Mary Thomas  
Adrienne Topic  
Lewis and Hella Volgenau  
Donna and Andrew Wechsler  
Joyce Weiner and Albert Tedesco  
Abigail Wolf amd Jonathan Weiss  
Ceci Yin^  
Diana Zalewski and Edward Fink^

## \$250-\$499

Anonymous  
Stuart Adair~  
Jay Anstee  
Sylvia Baker  
Robert and Sandy Clay Bauer  
Pat and Tom Bender  
Sara and Bruce Berger  
Ruth Berman  
Charlotte H. Biddle  
Fern and Robert Billet  
Barbara Bisgaier  
Linda and Alden Blyth  
Janice Bogen  
Tom and Mary Pat Boyle  
Riley Brown  
Carol and Allen Bonner  
Dr. Stephen Bulova and  
Eleanor W. Bulova  
Monika Burke and Kresimir Starcevic  
Chip Capelli, In Honor of  
Amy Murphy  
Elizabeth Cerkez and Alec Schoenfeld  
Leah Chaplin and Eileen Gildea  
Dr. Lawyer and  
Mrs. Rosetta Chapman  
Stephen Chrzanowski and  
Karen Feisullin  
Annemarie F. Clarke and  
David L. Buch~  
Diane and Patrick Close  
Mark Cohen and Marty Johnson  
Janet and Richard Conn  
Carol Cook

Carol Copland  
Betty Cooper  
Helen Newbold  
Hillary and Gene Curran  
Bill David and Lisa Handler  
William Diebold  
Stuart and Diana Donaldson  
Sally and Stewart Eisenberg  
Mary Lynn Ellis  
Anne C. Ewers  
Cheryl and Steven Feil  
Jay Finestone and Randy Jill Schwartz  
John and Nancy Fischer  
Jacqueline Foldesy  
Tong Ming-Fu  
Scott and Lynda Glading  
Diance and Fredric Graboyes  
Eileen and Norman Gray  
Yoni, Tracy and Omari Greenbaum  
Trudy and Paul Gutterman  
Marlane and Harvey Guttmann  
Carol Hauptfuhrer  
Richard and Barbara Hirsh  
Terry Hirshorn  
Michael J. Hozik and Margaret L. Rea  
Peter and Nora Hunt-Johnson  
Jim Hutchison and Nanci Ritter  
Mary and Howard Hurtig  
Karl Janowitz and Amy Goldman  
William Jordan\*  
Lisa and Perry Kahn  
Anne and Craig Jorgensen  
DL Kacer  
Philip\* and Marge Kalodner  
Phyllis Kauffman  
Douglas and Ruth Keating  
Michael and Marie Kenis  
Kate Kidder  
Brian and Caren Kirschner  
Paul and Michelle Kleschick  
Harold and Maris Kobb  
Drs. Bob and Joyce Leonetti  
Bea and Norm Leopold  
Ruth Lesser  
Natalie Levkovich  
Dr. and Mrs. Michael and Phyllis Levy  
Norman and Sylvia Lieberman  
Edward Lundy and Debra Reiff  
Theresa Mader and David Suter  
Lorraine and Bruce McMahon  
Cirel and Howard\* Magen  
Rose Malague  
Vicki Meitus  
Eric Moss  
The Kathleen J. Moyer  
Charitable Fund  
Richard Nigro  
Mr. Joe Norton

**Look around. Want to reach this audience? Advertise in our upcoming stagebill.**

For more information on custom packages, please contact Michel at [mmazno@manzomediagroup.com](mailto:mmazno@manzomediagroup.com) or Kim at [kritchards@manzomediagroup.com](mailto:kritchards@manzomediagroup.com)

# Thank You to Our Supporters

Frances Novack  
Paul Nutaitis and Robert Clark  
Deb Olley and Brian T. Murphy,  
In Honor of Deb Dorsey  
and Mike Green  
Timothy O'Malley  
Mr. Larry Pace  
Ms. Doris Peltzman  
David and Amy Pollack  
Sandy Portnoy  
Ilene and Coleman Poses  
Nick and Peg Potalivo  
Carol and John Rauch  
Gail and Jerry Raznov  
Kurt and Mary-Ann Reiss  
Gary and Robin Risler  
Claire Rocco  
Edward and GERALYN ROCK~  
Robert L. Roessler  
Maxine Romano  
Anthony Rostain  
Adelle Rubin  
Marilyn Sanborne  
Nancy Scharff, In Honor of  
Susan Segal  
Karen Schermerhorn and  
Evan Seymour  
Les Schlessinger  
Bonnie Schorske  
Jill and Kerry Schuman  
Lauren and Daniel Schwartz

Polly Shaffer  
Debbie and David Silver  
Rita and Neil Stevens  
Barbara and Robert Stewart  
Gay Strickler, In Honor of  
Anne Cook  
Richard Urbani  
Carol and Paul Vahlstrom  
Mark Wade  
David Warshal  
Marlene Weinberg  
Vivian Weinblatt  
Doris A. Williams  
Arnold Wolf and Fern Tablin

## \$125-\$249

Anonymous (4)  
Lawrence and Patricia Abramson  
Barbara Adams, In Honor of  
Susan Segal's Birthday  
Virginia Alpaugh~  
Diana Altegoer  
Adrienne Athanas  
David J. Baker  
Pam and Earl Ball  
Cecily Banks  
Richard and Eileen Bazelon  
Carol Beam  
Lisa Beckman  
Timothy Berger and Sarah Mooers  
Amy Brantz and Edward Bedrick

Jennifer Bell  
Sue Bentson  
Bill Bissell, In Honor of  
Arden Theatre Box Office Staff  
Stacey Blaksheer  
Ilene Blain  
Mr. and Mrs. Larry and Joyce Bloom  
Nathan Blum and Barbara Rolnick  
Stuart Bogom and Dorel Shanon  
Ethan Boldt  
Elizabeth Bond  
Miriam Bowerman  
Helen Boyle~  
Michael P. Boyle  
Leslie Bradley  
Stanton and Jill Braid  
Gary Bramnick  
Michael Brassloff  
Joseph and Mary Lou Breidenstine  
Alice Bronstein  
Sarah Campbell  
KC Casey  
Debbie and Alan Casnoff  
Caroline M. Castagno  
George and Barbara Chalmers  
Mr. Joseph Chaya  
Miles Cohen  
Michael and Ellen Singer Coleman  
Rick and Carol Collier  
Janet Connor Love  
Barbara Cortese

## CAFÉ TOLIA COFFEE & BAKERY



Where to find us:



☎ (267)-687-2533

📷 @cafetolia

📍 26 N 3rd St, Philadelphia, PA 19106

# Thank You to Our Supporters

Jill, Katie, and Hank Croft  
Sue Crow  
Cynthia D'Ambrosio  
Joseph and Helen D'Angelo  
Todd and Christine Darr  
Kelly and Steve DeAngelis  
Nancy and Ken Davis  
Robert and Bonnie DeAngelo  
Rhonda Dickey  
Margaret M. Dolan  
James H. Dovnarsky  
Ray Didinger  
Elise Drake  
Donald Drake  
JJ Garcia and Charlie Dreisbach  
Barrie du Bois  
Donald and Geraldine Duclow  
Laura Duffy  
Robert Earle^  
Linda Earle  
Jeff and Michelle Eichen  
Norman and Carolyn Ellman  
Ted and JoAnn Erfer  
Steven and Amy Erlbaum  
Morgan Everitt  
William\* and Anne Ewing  
Mark Fisher  
Pamela M. Fisk  
Diane and John Fitch^  
Fred and Kay Fletcher  
Kenneth Foster and Mary Jenkins  
Kimberly Foster^  
Alan Freed  
Paulette Freeman  
Douglas Frenkel and  
Marlene Weinstein  
Maryanne Noel and Philip Friedman  
Carol Fuoco  
Abraham Gafni  
Dennis Gallagher  
Suzanne Gallagher  
Miriam Galster  
Janet-Lynn Garrabrant  
Hugh Gayton  
Greg Gephart  
Waseem Givens  
Joan D. Gmitter  
Dick Goldberg  
Amy Goldstein  
Jane Greenberg  
Erin Grubb  
Joanne Halscheid  
June Hament  
Alice Hennessy  
Susan Herron  
Wendy and Steve Hess  
John Heward~  
Toby Hogan  
Linda Hollenback  
Chris Hoyler and Bob Jackson  
Lynda Hubbell

We are proud to support

**Arden Theatre  
Company**

**HARMELIN**MEDIA

More than forty years of  
transforming advertising.

More than forty years of  
supporting the arts.

[harmelin.com](http://harmelin.com)

Thomas Hurster and  
Jacqueline Salmon  
Timothy M. and Carol M. Johnson  
Ellen Kaplan  
Nina Keenehan  
Ora King  
Rachel and Will Kipnes,  
In Honor of Lee Marks  
Ken, Eva, and Aaron Klein  
Christine and Matt Kozsuch  
Vicki and Don Kramer  
Kathy Krebs  
James Kronzer  
Maureen Krueger  
Daniel Lai  
Andy Lamas and Ginny Vanderslice  
GeorgeAnn T. Lenard  
Michael L. Levitan  
Mary Lee and Bill Lieser  
Kathleen and Daniel Lipinski  
Victoria Lipoff  
Linda Litwin  
Diane and Michael Love

Larry and Nancy Ludgus  
Susan and James Lytle  
Kathleen Mahan  
Joseph M. Manko  
The Mantione Family  
Moshe Margolin  
Jane Martin  
Barbara J. Marshall, In Honor of  
Barbara Marshall  
Ken and Margery Maurer  
Michelle McFarlane  
John McCormick and Ken Schmitt  
Shawn and John McMillan  
Arthur and Sallie Melvin  
Sandra and Martin Miller  
Melanie Miller  
Dale Mitchell  
Gina Moore  
Peter Murphy  
Kenneth and Susan Myers  
Stephanie Naidoff  
Claiborne Newlin  
Karen Nice

# Thank You to Our Supporters

Etta and Charles Nissman  
Janet and Dennis Nocack  
David and Monda Noyes  
Jim and Patti O'Connell  
Judith O'Dell

Brenda J. Oliphant

Linda Osler

Ann O'Sullivan

Dr. Douglas Overtoom

Michele Palamountain

Michael and Judy Paul

Teresa Peterson

Kathy Pettit

Martha Platt and Marlis Kraft

Tara and Andrew Poag

Jeffrey and Elizabeth Podraza

Shaila Prabhakar

Ange and Jan Puig

Joel Quast

Pamela Quinn

Kristen Raleigh

Mark and Karen Reber

Zuzana Rehm

Mary Jo Reilly

Eleanor and Joseph Reinhardt

Barbara Rice

Mr. and Mrs. David and

Diane Richman

Judith Rice

Kathy Rigby+

Lou and Laura Romano

Carey and Robert Roseman~

Murrey Rosenberg

Richard and Anne Rosenberg

Shelley Rosenberg

Martin and Carol Rosenblum

Sue and Hal Rosenthal

Edwin and Sally Rosenthal

Barbara Rubel

Rene Rubin

Elizabeth Ryan

Janice Saibel

Joan Ryder and Robert Ludwig

Bill and Joan Saidel

Kelly Santoro

Carolyn Seplow and Adam Bailine

Carl W. Schneider

Mark and Nancy Schure

Evelyn and Harold Schwartz

Lisa Semeraro^

Gioia Sharp

Stacie Shepard

Celestine Silverman

Arnold Skolnick

Wayne Snover and Janet Tebbel

Walter Sobon

Jeffrey Sorkin~

Marilyn Staats

Dr. Christina Stasiuk^

Stephania A. Steed

Paul Steege

James and Lisa Steiker

Daniel Szyld and Kathleen Ross

Kenneth Tartof

John Tarves

Dorothy and Bryce Templeton

Kelvin K. Thompson Sr.

The Tobias Family

Marian Tracey

Bryan Ulishney^

John Urofsky

Darrell Velegol

Annette Voltz

Annalouise Votta

Ian Wachstein and Michele Zeldner

Ann Walker

Marc and Tova Walton

Shelly and Fred Weiner

Margo Weishar

Richard Willis and Linda Hartnett

Angela and Michael Winterrowd~

Barbara Yorke

Debbie Zakheim

Heidi Zod

## \$75-\$124

Anonymous (11)

Anonymous, in Honor of

Betsy Oliphant Ross (1)

Anonymous, In Honor of

Arden Drama School Scholarhsip

Linda Adams, In Honor of

Peter Adams

Diane Ajl

Hilary Alger

M. Faith Angell

Howard and Patricia Anton

Cheryl Apprey

Dr. Rita Axelrod

The Babilonia Prunés Family

Carl and Pat Bach

Theodore Bahner

Cecil Baker

Theresa Baraldi

Nathalie Bartle

Joseph Bartman

George Bassett

Gregory Beasley

Thomas and Eileen Beck

Flora Becker

Jim Becker

David Behrend

David Belanger

Michele Bennett

Sandra C. Bennett

Mr. David Berch

Zak Berkman

Connie and Dick Berman

Barbara Black

Jocelyn Block

Lori and Giovanni Blount Cucchiaro

Thomas Boghosian

Cynthia Bohse

Linda and Andy Borson

Iris and Michael Boshes

Hazel Bowers

Mary Ann Boyer

Thomas Breeden

Jennette Brian

Julianne Brienza

Ed Broderick and Erin Duffey

Eadie and Allan\* Brooks

Kathleen Brooks

Dorothy Brown, In Honor of

friendship with Libby Rosof

and Murray Dubin

Lisa Brown

Michael P. Buckley and Mason Barnett

Janice Burgh

Crystal and Tom Bush

Amber Bush

John Calaitges

Ms. Carol Campanelli

Denise Canner

Hugh Cannon

Erica Carpenter

Carol Carroll

Larry Carlin

Mr. Keith Case

Joseph Casey^

Lillian and William Cassel

John Cella

Julia Chapman

Kathy Chase

Janet Cherry

Ed Chew

Mayda Clarke

Matthew Cohen

Beth Cohen

John Collett

Jane Combrinck-Graham

Peggy Conner

Janet Cook

John Cooke

Dr. Cynthia Cooke

Donna Cordner and Brent Groce

B. Karen Coyne

Sara and Allan Crimm

Kortney Cruz

Louise Curl Adams

Kathleen Curran

Barbara and David Curtin

Beth Darrow

Katherine Davies

Adam Davis

Gilbert Davis

Katy Dawley

To join the *Sylvan Society* or for more information on how you can support the Arden, please contact Orelí Uzdavinis, Manager of Individual Giving, at 215.922.8900 x131 or [uzdavinis@ardentheatre.org](mailto:uzdavinis@ardentheatre.org)

# Thank You to Our Supporters

Peggy de Wolf  
Nancy DeCarlo  
Cordelia and Don Delson  
James Derr  
Nancy and Nishan Dersimonian,  
In Honor of Clayton Tejada and  
Arden Front of House Team  
Kathy and Eric Dobrzynski  
Alan and Fran Domers  
Frank and Sara Donnelly  
Bill Dooley  
Judith Drasin  
Alice Dungan  
Faith Edelman  
Michael Edelman  
Jonathan and Ella Edwards  
Ms. Gladys G. Eilberg  
Ricki Eisenstein  
Laura Ekstrand  
Linda Ellsworth  
Mary Louise Elston  
Beverly Emanuel  
Jack Ende  
Edmund and Judy Erde  
Arturo Espinoza Jr.  
Sonja and Thomas Eveslage  
Susan Extein and Lucy Hyatt  
Sonia Fair  
Michael Feicht  
Cari Feiler Bender and Rodd Bender

Winifred Fessenbecker  
Judi Field and Martin Getzow  
Jill Fink  
Sarah Flook, In Honor of  
Betsy Oliphant Ross  
Tamara Forstater  
Irene Frangatos  
Allyson J. Frank  
Ms. Judy Frank  
Kenneth Frank  
Marisa Freda  
Allan P. Freedman and  
Amy Rappaport  
Brenda Freitag and Chet Tuthill  
Valerie Fusco  
Anne Galbally  
Nacole Gallagher  
Ofelia Garcia  
Stephen Garland  
Marguerite Geiger  
Mary Geisz and Keith Pryor  
Coeli Genter  
Leslie Gerhart  
Eric Gerstel  
Mark Gibbons  
Ms. Sandra Gibson  
Blossom Gica  
Gwen and Alvin Gilens  
Ilse Goldfarb  
Daphne Goldman

Mary Goldman  
Juanita Goodman-Gathright  
Bob and Jan Goren  
Marie Gottschalk  
Marylyn Goutmann  
Mary Graham  
Rick and Sharon Graham  
Ellen Greco  
Anna and Jerry Green  
Cheryl and Jonathan Green  
Jonathan Greene  
Adele Aron Greenspun  
Paul and Terry Guerin  
David and Myra Gutin  
Bobbie Halpern  
David and Janice Haman  
Mary Kate Harkins  
Susan Harris  
The Harris Ketterer Family  
Palmer and Judith Hartl  
Susan Havens-Lang  
Catherine Hawkes  
Jenn Hayden  
Joan and Richard Heller  
Irene Hempstead  
Karen Hennes  
Angela and Michael Hennessey  
Don Henry  
Dr. William Herring and  
Mrs. Patricia Herring



all you need is fresh flowers

WWW.NEFLOWERBOUTIQUE.COM  
NORTHEASTFLOWERS@GMAIL.COM  
@NE\_FLOWER\_BOUTIQUE

OLD CITY  
(267)570-7707  
60 N 2ND ST

NE PHILLY  
(215)437-1913  
11702 BUSTLETON AVE

NE FLOWER BOUTIQUE  
www.neflowerboutique.com

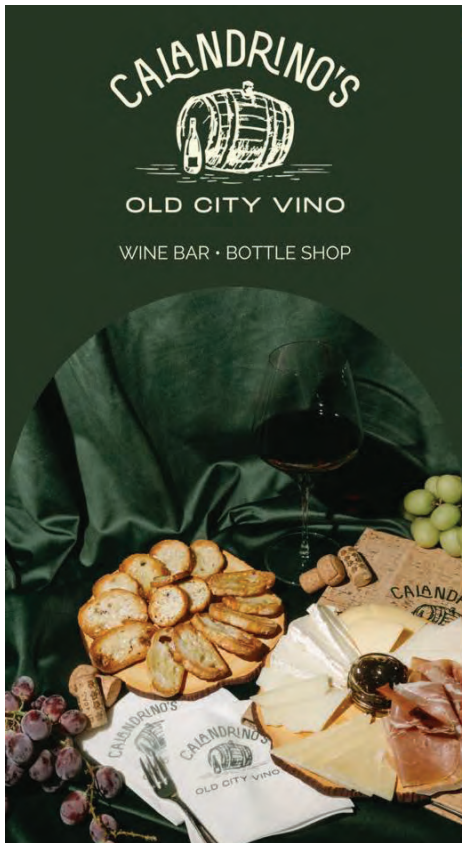


# Thank You to Our Supporters

Les and Mary Heselton  
Mike Hinkson  
Larry Hirschhorn  
Amy Hodgdon  
Leonard and Audrey Hoffman  
Morton and Lois Joy Hoffman  
Dr. and Mrs. Bentley and  
Clara Hollander  
Toby Hogan  
Marie Horchler  
Linda Howell  
Michelle Hudson  
Dave F. Huting  
Meghan Ignatosky  
Gwynne L. Issacs  
Joan Ivanoski  
David and Sylvia Jacobs  
Kathy Jacoby  
Barbara Jamison  
Drs. Anthony and Estelle Chun  
Marilyn Johnson  
Lauren Kahn  
Steven Kallish  
Karen Kaplan^  
Mark Karlen  
Bruce and Carol Katcher  
Mimsye Katz and Laurel Bar  
Mr. Rosamond Kay  
Susan Kershaw  
Barbara Kessler

Toni and Herbert Kestenbaum  
Bob Kestler  
Robert and Susan Kettell  
Julia Kharlip, In Honor of  
Arden's Clyde's  
Christina Kind  
Cheryl and John Kirby  
Helene and Ron Klimberg  
Rita Klinger  
Margaret Klock  
Lorraine Kobeski  
Jerry and Deena Koffler  
Ellen Kopeland  
Michele and John Koskinen  
Arthur Kover  
Alysa Krain  
Shira Kramer  
Barbara Kreider  
Denise A. Kuhn  
Ellen Kurtz  
Alan Kutner  
Martin and Hannah Laufé  
Gretchen Lea  
Joe Leonard  
Maria Lerman  
Darlene Levin  
Todd Levin  
Rafael Levites  
Madeline Levy

Missy Lide, In Honor of  
Betsy Oliphant Ross  
Wendy Liebling  
Nathan Link  
Armando Llanes  
Deborah and Albert Lorenz  
Robert Losick and Linda Nash  
Jane Issacs Lowe  
Nancy Ludgas  
Robert and Patricia Lynam  
Tina Manco  
Krista Mar  
Ms. Bonnie Maradonna  
Linda and David Marder  
Kimberly Marsh  
Thomas Massimiani  
Bill Mayes  
Maria McCormick  
Bernadette M.  
Marie McCullough  
Kathleen McGrann  
Virginia McIntosh  
Patrick McDonald and Martine  
Combal, In Honor Of  
Betsy Oliphant Ross  
Elizabeth McDonald, In Honor of  
Betsy Oliphant Ross  
Jackie Meltzer  
Mark Mendenhall  
Robert Mercadante



# Thank You to Our Supporters

Anne Michel  
Bruce Miller  
Lina Minicucci  
Elisa and Dom Minni  
Kristin Minot  
Ann Mintz and Clifford Wagner  
Valerie Mond and Ed Nowak  
Tina Morrison, In Honor of Flynn  
and his senior year  
Peggy Morrison  
Brad Moss and Laurie Gottlieb,  
In Honor of Harvey Swedloff  
David N. and Laurel S. Mosteller  
Geraldyn Moyer  
Theodore and Theresa Munz  
Debbie Neibauer  
Pamela Nelson  
Hillary Nelson  
Paula and Lawrence Ninerell  
Sylvia Nisenbaum  
Amy Norr  
Daniel and Jeannette Norris  
Lora Northern  
Jonathan Offenkranz and  
Deborah Gordon  
Hannah Olanoff  
Margaret Olson  
Jeanne Omans  
Audrey Owen  
Natasja Pajkovic  
Deborah Panagacos, In Honor of  
Betsy Oliphant Ross

Antonio Paola  
Alisa Peet  
Steven Peitzman  
Jane G. Pepper  
Bill Pfeifer  
Karen Piercy  
Lucille Pilling  
Deborah Pines and Carl Perchonock  
John and Victoria Podolski  
Theodore Politis  
Al Politowski  
Dr. Tom and Candace Pratt  
Frank and Patricia Preston  
Mike Pulsifer  
John Ramsaur  
Brian Rath  
Timothy and Joyce Ratner  
Abi and Craig Reed  
Erin Reilly  
Kenneth Richman  
Elisa Riesenbach  
Richard Ritunnano  
Mary Ann Robinson  
Bonnie and Len Romberg  
Ellen and Ralph Rosen  
Maxine Rosen  
Ellyn Rosenfeld  
Libby Rosof and Murray Dubin  
Richard Ross  
Diane Rossheim  
Enid Krasner and Alan Rothenberg  
Maggie and Jay Ruane

Bernard and Barbara Ruegauer  
Amy and Mitch Russell  
Stephen and Linda Russell  
Suzanne Ryan  
E. Ruth Sachs  
Janice Saibel  
Desiree Salera  
Robin Sampson  
Carlos Santos  
Karyn L. Scher  
Jane Schloss  
Bobbie and Al Schmidt  
Mark Schreiner  
Ms. Adeline Schultz  
Ms. Theresa Scott  
Gail Scott  
Patricia Scott Hobbs  
Hideko Secrest  
Annilee Seitchick  
Julie Senko  
Kathleen Senkow  
Rich Sensenbrenner  
Hermene Shapiro  
Sandi Sherr  
William Shoff  
Charlotte Sibley  
Robin Siegel  
Wystan Simons  
Judith Skillings  
Carlene and David Slowik  
Dennis Raymond Smeal  
The Snyder Family



## FRINGE BAR

THE WATERFRONT'S NEIGHBORHOOD BAR

• SOULFUL PUB CUISINE • ARTISTIC COCKTAILS •

140 N COLUMBUS BLVD

Paula and Mark Solomon  
Vicki and Evan Solot  
Barbara and Steven Speece  
Heather Speirs  
Margaret R. Spencer  
Deborah and Gary Stahl  
Joanna Stamper  
Konnie Stark  
Jerry Steiner  
Catherine Stock  
Bonnie Stone  
Louise and David Strawbridge  
Elan Strominger  
David Swartz  
Dr. Dolores Szymanski  
Matthew Taberski  
Mary Jane Thompson  
Thomas Thompson  
William Thompson  
Louis Tillery  
Ann Trail  
Judy Trailer  
Mr. Nova Tucker  
Edward and MaryAnn Tierney  
Bill and Patti Toner  
Lyn Tuckman  
Valeria Vasilevski  
Dagny Veitch  
Cynthia L.Vena  
Frank and Carol Vita  
Deborah Volkmer  
Annalouise Votta  
John Walber  
Carolyn Walter  
Tom and Beth Warms  
Robin Warsaw  
Ellen Watson  
Howard Weiner  
Joan Weiner  
William Weir  
Lenore Weissberg  
Shannon Welsh  
Ellen Welson  
Beverly Werner Caplan  
Carol Ann Wesh  
Suzanne L. Weston  
Marsha Wheeler  
Gwendolyn Wiley  
Carol Williams  
Marcia Witlin-Basickes  
Kuna Yankell  
Julie Zaffarano  
Hilary Zankel

\* Denotes a deceased supporter

+ Denotes a gift of goods or services

^ Includes a matching gift

~Includes a monthly gift

This list represents gifts made through March 12, 2025



# POP INTO SPRING BUBBLE BASH

MARCH 31 - MAY 4

For tickets, reservations  
and information, visit:  
[adventureaquarium.com](http://adventureaquarium.com)



**JOIN US!**

**A RECAST, MISCAST, NOT-TO-BE-MISSED CAST**

# **GABARET**

**A one-night-only concert and celebration  
in support of the Arden**

**Monday, June 9, 2025 | 6-10PM**

Arden Lobby & F. Otto Haas Stage  
40 North 2nd Street | Old City, Philadelphia

## **FEATURING**

- A musical program featuring some of your favorite Arden artists
- A pre-show reception to treat your tastebuds
- A silent auction and raffle with amazing prize packages we know you'll love

**Early bird tickets are on sale  
now through April 19! (\$100)**

---

**Visit [ardentheatre.org/cabaret](https://ardentheatre.org/cabaret)  
to get your tickets today!**



*Proceeds from this fundraising event will support Arden's mission of  
telling great stories by great storytellers, on the stage,  
in the classroom, and in the community.*

# Thank You to Our Supporters

## *Gifts in Memory Of...*

### **ALFONSO ANDRADE**

Gabriela Andrade

### **JUDY BARBUSH**

Christine and Matt Kozsuch

### **TOM BEAM**

Carol Beam

### **DR. DONALD BECKIE, PHD**

Peter and Laura (nee Beckie) McQuaid

### **ELIZABETH P. CORNMAN**

Anonymous

### **ERNEST CUFF**

Ellen Deacon

### **MARJORIE DICKEY**

Rhonda Dickey

### **MARCELLA E.**

Bernadette M.

### **JOSEPH FINKLER**

Charles Rose

### **LEONA E. GRAHAM**

Rick and Sharon Graham

### **DONALD GREEN**

Scott and Lynda Glading  
Marianne Green

### **JAMES J. HANEY III MD**

Anonymous (4)  
Sherri Becker  
Christopher Bradie  
Hillary and Gene Curran  
Beth Darrow  
Janice Dathe  
Alan and Fran Domers  
Frank and Sara Donnelly  
Bill Dooley  
Ann Marie Fritz  
Coeli Genter  
Rosanne and Bob Grant  
Joanne Halscheid  
Patricia Haney  
The Harris-Ketterer Family  
Jennifer Heist  
Dr. William Herring and  
Mrs. Patricia Herring  
Michael Johnson  
Amy Kiraly  
Madeline Levy  
Geryl Moyer  
Deborah and Albert Lorenz  
Brett Murphy  
Norman Family  
Sue and Tom O'Donnell  
Maggie and Jay Ruane  
Barbara Rubel  
Scott and Maria Schaffer  
Lindsay and Pete Seelig  
Bill and Patti Toner  
Karen and Frank Ulmer  
Frank and Carol Vita

Carol Ann Wesh

Richard Wesh and Family

### **BARBARA HAWTHORNE**

Anonymous

### **LUCKY HERTFELDER AND SHARON CLAUSON**

Heidi Hertfelder

### **BARBARA KARR**

Charles Rose

### **MILT AND ROZ KLEIN**

Ken, Eva and Aaron Klein

### **JOHN KOSCELNIK**

Valerie Koscelnik

### **SHEILA KUTNER**

Dr. Beverly Emanuel  
Alan Kutner

### **HOWARD MAGEN**

Cirel Magen

### **MINION**

The Vander Woude Family

### **MOXIE MCCUTCHEON**

Celestine Silverman

### **WESLEY MONTGOMERY AND SUE WINGE**

Anne Halkedis

### **MILA ANNA NGUYEN**

Danny Nguyen

### **MIRIAM NORRIS**

Daniel and Jeannette Norris

### **GEORGE AND DOLORES OTTINGER**

Stephen and Kathy Thompson

### **RICHARD REPETTO**

Dan Rothermel and Michael Hairston

### **ANNIE RICHARDSON**

Anonymous

### **JILLINE RINGLE**

RM Perdick and LB Smith

### **GEORGE R. SZYMANSKI, ESQ.**

Dr. Dolores Szymanski

### **ANURADHA SEEKAY**

Aneira Puttaswamy

### **GERI TALLONE**

Scott and Lynda Glading

### **MIKE TINKER**

Janice Burgh

### **WALT VAIL**

Jason Vail

### **PETER WALDRON**

Rich and Lolly O'Brien

### **ASTER WASMER**

Polly Shaffer

### **BETTY E. WATERS**

Anonymous

### **LESLIE F. WELSON**

Ellen Welson

### **CASEY ZEFF**

Eileen Heisman and Marty Tuzman

### **ALICE AND MARIE**

Anonymous

## *Gifts In Honor Of...*

### **DAVID PRESSEL'S BIRTHDAY**

Anonymous  
Jill Feldman  
Leslie and Michael Molder

## *Gifts To Named Funds...*

### **NAMED SEATS THIS SEASON**

Anonymous  
Kelli Hargreaves  
Phil and Michelle Hatfield  
Jason Vail

### **ANDREA MENGEL FUND**

Doug and Kristin Berman  
Derick Dreher  
Independence Foundation  
Susan Sherman

### **ANN B. MCNAMEE FAMILY THEATRE FUND**

Dennis and Louise Buckley  
Dennis and Melissa Rodkin  
Robert and Joan McLaughlin

### **THE BRODIE FAMILY, IN HONOR OF DR. MAMA'S RETIREMENT**

The Brodie Family

### **THE DR. MINDY GOLDBERG ROSE INTERNSHIP FUND**

Nancy and Bob Elfant  
Equitable/ AXA Foundation  
Charles Rose  
Heidi and Mitchel Rubin,  
In Honor of Nathan Dorman  
Dorothy Sheridan

### **THE BERNARD AND CAMILLE ROSENBERG FAMILY THEATRE FUND**

Bernard and Camille Rosenberg

# Board and Committee Members

## Board of Directors

Michael A. Donato, *President*  
Rayenne Chen, *Vice President*  
Rhonda Ball, *Vice President*  
Michael S. MacFarland, *Treasurer*  
Richard L. Maimon, *Secretary*  
Kelly Colarelli  
Anne Cook  
Robert Elfant  
Nancy Elfant  
Elizabeth A. Fernández-Viña  
Elizabeth H. Gemmill  
Jennifer Harmelin  
Richard Harris  
Valerie I. Harrison  
Ann Marie Horner  
Holly Kinser  
Dr. Saifuddin T. Mama  
Amy L. Murphy  
Terrence J. Nolen  
Hon. Rosalyn K. Robinson  
Charles H. Rose  
Monica Rosenthal  
Genvieve Shields  
Lee van de Velde  
Steve Wolfson  
Diane Dalto Woosnam  
Ellen Yin

## Board Executive Committee

Michael Donato, *Chair*  
Michael MacFarland  
Rhonda Ball  
Rayenne Chen  
Robert Elfant  
Jennifer Harmelin  
Dr. Valerie Harrison  
Holly Kinser  
Richard L. Maimon  
Genvieve Shields  
Lee van de Velde

## Finance Committee

Michael MacFarland, *Chair*  
Juan De León Domenech  
Elizabeth Gemmill  
Anne Marie Horner  
Dan Hilferty  
Daniel Krewson  
Eliza Orleans  
Harvey Swedloff

## Board Development Committee

Rayenne Chen, *Chair*  
Valerie Harrison, *Chair*  
Michael Donato  
Robert Elfant  
Holly Kinser  
Saifuddin T. Mama

## Board Development Committee (cont.)

Lee van de Velde  
Diane Dalto Woosnam

## Personnel Committee

Rhonda Ball, *Chair*  
Michael Donato  
Elizabeth H. Gemmill  
Richard Harris  
Michael S. MacFarland  
Charles H. Rose

## Engagement Committee

Jennifer Harmelin, *Chair*  
Genvieve Shields, *Chair*  
Lee van de Velde  
Anne Cook  
Elizabeth Fernández-Viña  
Camille Rosenberg  
Hope Yursa

## Facilities Committee

Richard L. Maimon, *Chair*  
Mike Green  
James Kronzer  
John J. McCawley  
H. Hetherington Smith  
Chris van de Velde

## Equity, Diversity, and Inclusion (EDI)

Rayenne Chen  
Anne Cook  
Joy L. De Jesús  
Robert Elfant  
Kash Goins  
Richard Harris  
Dr. Valerie Harrison  
Zuhairah McGill  
Amy L. Murphy  
Bi Jean Ngo  
Terrence J. Nolen  
Hon. Judge Rosalyn Robinson  
Clayton Tejada  
Orelí Uzdavinis

## Young Friends Committee

Chelsea Beytas  
John Connolly  
Elizabeth Fernández-Viña  
Kathleen Johnson  
Alexa Josaphouitch  
Meredith McGovern  
Jenny Morrison  
Aby Rodríguez  
Mandie Spindler

## Two easy ways to support the Arden right from your theatre seat:



**Venmo**

**Paypal**

**How To**



**venmo**



1. Open the camera on your phone to scan the QR code of your mobile payment app.

2. Enter the amount you would like to donate and complete the transaction.

3. THANK YOU FOR SUPPORTING GREAT STORIES ON THE STAGE, IN THE CLASSROOM AND IN THE COMMUNITY!

If you would like to speak with someone about your annual support, please contact Orelí Uzdavinis, Manager of Individual Giving at 215.922.8900 x131 or email [ouzdavinis@ardentheatre.org](mailto:ouzdavinis@ardentheatre.org).

# Staff

Artistic	Producing Artistic Director.....	Terrence J. Nolen
	Associate Artistic Director.....	Jonathan Silver
	Artistic Assistant.....	Nick Hatcher
	Commissioned Playwrights.....	Kash Goins, Robi Hager Rogelio Martinez, Iraisia Ann Reilly
Administrative Management	Managing Director.....	Amy L. Murphy
	General Manager.....	Clayton Tejada
	Business Manager.....	Paola Cruz
	Audience Services Manager.....	Tanner Richardett
	Facilities and Office Manager.....	Larry Brooks
	Arden Professional Apprentices.....	Abby-Jeanne Ruger (Aj), Ashley Austin, Ian Gaskin, Malena Rivera
Marketing	Director of Marketing and Communications.....	Mike Hogue
	Marketing Manager.....	Erika Byrnison
	Communications Manager.....	Aseal Saed
	Publicist.....	En Route Marketing
	Marketing and Group Sales Associate.....	TJ Harris
Development	Director of Development.....	Jessica Abel
	Manager of Individual Giving.....	Orelí B. Uzdavinis
	Development Coordinator.....	Tylar Benedetto
	Manager of Institutional Giving.....	Gwyn Garrison
Education	Director of Education.....	Lauren Diesch
	Education Outreach Manager.....	Josh Thorps
	Arden Drama School Manager.....	Elise D'Avella
	Education Associate.....	Francine Odri
	Teaching Artists.....	TJ Harris, Campbell O'Hare, Brennen Malone, Jessica Money, Julianna Babb, Cindy Paul, Andrea Rose Cardoni, Marie McVeigh, Ella Kahan, Katie Hahn, Zoe Hollander, Katherine Perry, Adam Howard, Charis Duke, Eliana Fabiyi, Eliana Pinckney, Gina Giachero, Jake Collins, Jordan Hunter-Fidalgo, Lexi Schreiber, Nadia Ra'Shaun, Tanaquil Marquez, William Daniels, Daniel Matarazzo, Hallie Berger, Riley Irvine, Lydia Hassell, Nina Gold, Abby Weissman Jayson Brown, Leah Cohen, Jenna Kuerzi
Front of House	Box Office Manager.....	Jason Blacketer
	Assistant Box Office Manager.....	Amanda Adams
	House Manager.....	David Demnicki
	Front of House Associate.....	Kathryn Bondi
	Front of House Assistants.....	Adiah Hicks, Becky Fleckner, Catey Midla, Chelsey Gaskins, Dalia Cousineau, Emily Hernandez, Glynnis Nadel, Jenny Glickman, Jill Chase, Laura Duffy, Mads Klemm, Margaux Cattelona, Morgan McNulty, Skyler Gonzalez, Syaera Cort, KC Casey, Victoria Silva
Production	Production Manager.....	Kate Nelson
	Technical Director.....	Evan Lewis
	Assistant Technical Director.....	John Winter
	Electrics Supervisor.....	Martin Stutzman
	Sound Supervisor.....	John Kolbinski
	Costume Supervisor.....	Stephanie Shaw
	Properties Supervisor.....	Kelly McLaughlan
	Charge Scenic Artist.....	Brit Bannon
	Production Assistant.....	Kylen Bailey
	Assistant to the Stage Manager.....	Ashley Austin
	COVID-19 Safety Managers.....	Clayton Tejada, Jonathan Silver
	Electricians.....	Anna Ryabova, Meghan Moore, Xander Setchko
	Electrics Programmer.....	Toni Mitchell
	Stitchers.....	Bridget Brennen, Rebecca Kanach, Amanda Carano, Peter Adams
Carpenter.....	Anna Ryabova	
Dr. Mindy Goldberg Rose Production Interns.....	Jesse Johnson, Solomon Hess	

# CREATIVE REAL ESTATE FOR CREATIVE PEOPLE



## Happy Clients

Charlie DelMarcelle  
Barrymore Award  
Winning Actor  
Katherine Fritz  
Costume Designer



**BENJAMIN CAMP**

**REALTOR® & CCSJ Team Leader**  
*Actor & Producer*



**JAMES SUGG**

**REALTOR®**  
*Actor & Sound Designer*

The CCSJ Team is proud to continue our *Support the Arts Initiative*, donating to local performing arts organizations for every closing. Whether you're on-stage, behind the scenes, or in the audience, choose the REALTOR®s who support our arts community.



Contact  
Benjamin



📞 610.220.8550  
📧 ben@ewrhomes.com



Contact  
James



📞 267.303.2827  
📧 sugg@ewrhomes.com

215.893.9920

THESTELLARCHOICE.COM | ELFANT WISSAHICKON  
2000 PINE ST, PHILADELPHIA, PA 19103

Elfant   
Wissahickon  
- REALTORS® -