

ARDEN CHILDREN'S THEATRE

PETER PAN



Adapted for the stage by
Douglas Irvine

From the book by
J.M. Barrie

Directed by
Whit MacLaughlin



Arden
THEATRE CO.

Honorary Producers:
Anne Cook and Russ Troyer
Hether and Don Smith

NOV 27 - JAN 19

On the F. Otto Haas Stage

Production Sponsor:



pecoSM

AN EXELON COMPANY

There's no better gift for your family than the protection of an IBX health plan



Don't miss your chance to enroll in health care coverage for 2025!



Scan the QR code or visit ibx.com/ardentheatre to shop for a health plan. Or, call **1-844-762-2139** (TTY: **711**) to enroll.

Independence Blue Cross is an independent licensee of the Blue Cross and Blue Shield Association.

Independence 

WELCOME

From the Producing Artistic Director



Imagine if you could fly.

Where would you go? Would you fly to your friend's house? Would you fly to school? Would you fly inside your school?

Flying is an important part of *Peter Pan*. This story was written by J.M. Barrie in 1905, and it's been told and retold in so many ways since then -- in movies, musicals, video games, and of course the famous Disney version. Right now, at a theatre outside of Philadelphia called People's Light, they are doing another show based on *Peter Pan* called *Peter Panto*. There is Peter Pan Peanut Butter and even the Peter Pan Right Bus Line! Why does *Peter Pan* live on 120 years after it was written?

Peter Pan captures our imagination. We can lift off the ground and fly away with the Darling kids. We can live in a world with pirates and fairies and a group of boys who need a mom. With the power of our imagination, we believe. And *Peter Pan* never grows up.

This spring, we will be doing a production of *The Hobbit* made just for kids. *The Hobbit* is another adventure story. The hero of the play is Bilbo Baggins, and he is called to go on a great quest. But he doesn't want to leave his house. So he has to imagine that he can be brave, even when he's a little scared. He has to believe he can do things he's never done before — like fight a dragon! Come see it, it's a great story.

With screens and cell phones and so many quick answers at our fingertips, we sometimes forget that our imaginations are one of our superpowers. When we use our imaginations, we can go anywhere, do anything, see a better future. Without our imaginations, how could we ever fly?

Thank you for bringing your imagination to our show. Thank you for going to Neverland with us! Come back this spring to see the dragon.

P.S. The Arden has amazing classes and camps for kids of all ages. We have a special class on Saturday, February 8 called **Back to Neverland: Behind the Scenes Peter Pan Acting Workshop** for Grades 3-5. This is a great chance to see what Arden classes are like. For more information about all our classes, go to ardendramaschool.com or ask the box office.



pecoSM

AN EXELON COMPANY

Partners in possibility.

Being your power company means so much more than keeping the lights on and natural gas flowing. It's about supporting the arts. That's why we are proud to sponsor the Arden Children's Theatre's winter production of ***Peter Pan***.

This is our home, too. And neighbors like you inspire us to make our communities even more vibrant, every single day.

Learn more at [peco.com](https://www.peco.com)



A Message

From our Production Sponsor



On behalf of PECO, I'm thrilled to continue our support for Arden Theatre and this season's production of *Peter Pan*.

Powering the arts throughout Greater Philadelphia is a vital part of PECO's mission. We don't just power nearly 2 million homes and businesses across the five-county region—we also proudly energize a range of arts and culture organizations that enrich our communities with accessible, impactful programs.

This commitment inspired the creation of the PECO Powering the Arts Grant Program. Launched in 2022, this competitive grant program has empowered arts and cultural organizations within PECO's service area to foster community connections through the arts. We believe that arts education, engagement, and participation are essential for enhancing quality of life and strengthening our communities.

In 2024, PECO awarded more than \$150,000 in grants to 19 cultural institutions and arts nonprofits. These grants will fund public events and programs that use art to create social connections, explore cultural identities, and showcase Philadelphia's unique and diverse stories.

At PECO, we know that arts and cultural engagement celebrates diversity, elevates the human experience, and inspires the next generation. We are proud to continue supporting the Arden in bringing wonderful stories like *Peter Pan* to audiences of all ages.

Enjoy the show, and Happy Holidays!

David Velazquez, President and CEO, PECO

Accessibility Services

The Arden complies with all applicable federal, state, and local statutes and laws to ensure accessibility to individuals with disabilities who visit our theater. We invite you to visit ardentheatre.org/plan-your-visit/accessibility for more details about our services and offerings.



Accessible Seating & Seating Requests

Removeable seats for wheelchairs & Accommodations for comfort, mobility, & hearing or vision needs



NEW! Smart Caption Glasses (SCG)

Wearable, customizable closed captioning glasses. Available 1 week after Opening Nights. Ask Box Office to borrow.



Assistive Listening Devices (ALDs)

Amplification of all onstage sounds. Ask Box Office to borrow. Available with headphones or a t-coil neck loop.



Large Print Programs

Enlarged-text printed programs for low-vision patrons. Ask Box Office to borrow.



Open Captioning (OC)

Text display of all dialogue and sounds. Available select Friday & Saturday performances.



Shadow American Sign Language (ASL) Interpretation

Live ASL interpretation shadowing the action of the show. Available at select Children's Theatre performances.



Audio Description (AD)

Live verbal commentary of all visual elements. Ask Box Office for access. Available select Friday & Saturday performances.



Service Dogs

We welcome patrons with Service Dogs (and Service Dogs in Training) to attend our performances



Social Narratives

Booklets with step-by-step expectations of your experience at the Arden from arrival to departure.

We encourage any feedback and suggestions regarding our accessibility services to ensure we're doing the best we can. Please contact Tanner Richardett, Audience Services Manager, at trichardett@ardentheatre.org

A Message from our Honorary Producers



We brought our seven-year-old daughter, Sarah, to the very first Arden performance in 1988. It has been a love-affair ever since.

Sarah, along with her own five and seven-year-old sons, will be coming to the Arden to see this production of *Peter Pan* — 36 years later.

Being part of the Arden family has been an important aspect of our family's life. From the enchanting shows for children (favorites have included *Frog & Toad*, *Jungle Book* and *Charlotte's Web*) to the fascinating premieres (*Baby Case* and *Our Town in Old City*), these shows have been a source of laughter, inspiration and wonder.

Peter Pan is a story of growing up (or not), and of being faithful — a perfect show as our family introduces the next generation to the joy of live theatre. Enjoy the show.

Hether and Donald Smith



the
Crefeld School

Intentionally different college prep

www.crefeld.org

Chestnut Hill, Philadelphia

A Message from our Honorary Producers



Welcome to the Arden for what's sure to be a memorable experience for the whole family!

As longtime patrons, contributors, and through Anne's volunteer leadership on the Board of Directors, we're committed to uplifting and supporting Arden's mission. We can always count on Arden Children's Theatre to invest every bit

as much care, time, and attention into its kids' productions as they do for the mainstage. We especially appreciate Arden's commitment to making sure live theatre is accessible to all children across our community, regardless of financial means, through Arden for All, a program we directly support with a shared sponsorship of a Philadelphia school.

We have enjoyed all of the Arden's Children's Theatre productions over the years but one moment, actually two, stand out. We attended a 2018 performance of *Peter Pan* with a theatre full of school children (and their teachers) including students from the school we help sponsor. Just before intermission, and again at the end of the play, there was a collective gasp from the audience, so on cue that it seemed as if they had practiced it for weeks. Spontaneous and amazing!

From *Treasure Island* to *Snow Queen* to *Pinocchio*, we've always enjoyed the creative ways the Arden re-imagines the classics and uplifts stories to take audiences on a journey through the imagination. These productions challenge us to be vulnerable, be brave, and ignite curiosity and understanding among young theatregoers. *Peter Pan* is one of those beloved stories that nearly everyone knows. We've all secretly wished to be whisked off to Neverland at one time or another—perhaps never more so than these days, considering the bewildering stresses and tensions of our lives. We hope that, for the next few hours, you can suspend reality and go on an adventure that sparks wonder and leaves you filled with joy.

We are proud to share our love of the Arden with our kids and grandchildren this holiday season, and we hope you enjoy it as much as we do!

Anne Cook and Russ Troyer

ARDEN CHILDREN'S THEATRE PRESENTS

PETER PAN

Adapted for the Stage by
DOUGLAS IRVINE

From the book by
J.M. BARRIE

Produced by special arrangement with
Plays for New Audiences

Scenic Designer
DAVID P. GORDON+

Costume Designer
JILLIAN KEYS

Lighting Designer
KRISTA SMITH+

Sound & Projection Designer
LARRY FOWLER+

Assistant Director
KEVIN NADDEO

Stage Manager
LYNDSEY CONNOLLY*

Directed by WHIT MACLAUGHLIN

November 27, 2024 - January 19, 2025

Honorary Sponsors:
Anne Cook and Russ Troyer
Hether and Don Smith

Production Sponsor:
 **peco**SM
AN EXELON COMPANY

THE VIDEOTAPING OR MAKING OF ELECTRONIC OR OTHER AUDIO AND/OR VISUAL RECORDINGS OF THIS PRODUCT AND DISTRIBUTING RECORDINGS OR STREAMS IN ANY MEDIUM, INCLUDING THE INTERNET, IS STRICTLY PROHIBITED. A VIOLATION OF THE AUTHOR(S)'S RIGHTS AND ACTIONABLE UNDER UNITED STATES COPYRIGHT LAW.



Arden Theatre Company receives state arts funding support through a grant from the Pennsylvania Council on the Arts, a state agency funded by the Commonwealth of Pennsylvania.



+ Member of United Scenic Artists
Local USA 829

* Member of Actors' Equity Association,
the Union of Professional Actors and
Stage Managers in the U.S.

A Note

From the Director



Peter Pan is a tale of children venturing out from safety into an unpredictable world. Adventure, we call it. Ad-venturing: moving out from something, towards something else.

Leaving things is hard. Adventure comes with a cost.

I remember the first time my family moved. We left the home of my earliest years. I was brokenhearted. My first bedroom, my first school, the backyard where I played. The neighborhood kids. I cried and cried. Eventually, the new home became my familiar home. Then I left that one for a different home. Many homes later, I've lived in my current home, as an adult, for the longest period that I've lived anywhere. Where is my next home? And on and on and on.

The story is filled with yearning. Yearning for home. For love, for the familiar, for enjoyment, friendship. For the unknown. For safety. For danger.

Adventure is a gift filled with contradictions.

Peter, why are you crying?

Because my shadow keeps running away.
Because I'm always in charge.
Because I can't keep a friend.
Because I have trouble reading other people's faces.

Captain Hook, why are you bitter?

Because my crew members are dolts.
Because my right hand is gone and I'm right-handed.
Because the passage of time feels dangerous.
Because that infernal smile.

Wendy, why are you leaving?

Because I miss my mother.
Because I have to feed Nana.
Because I must become Jane's mother.
Because someone named Peter won't love me back.

Why is this production based on a painting by Rene Magritte, called *Empire of Light*?

Because the painting is dreamy.
Because the painting is set in eternal twilight.
Because Surrealism gives permission for so many things.

Why do we love this story?

Because after a great adventure in Neverland, it's really wonderful to go home.

***Why does the Director have an apple in front of his face?**

Check out the Resource Guide at ardentheatre.org/neverland for the answer!



Empire of Light by Rene Magritte

Cast of Characters

Hook.....J.Hernandez*
 Michael Darling/Slightly/Starkey/Cecco/Noddler/Tinkerbell/Mermaid.....Adam Howard*
 Darling/Smee/Nibs/Tinkerbell/Mermaid.....Lee Minora*
 Jane Darling/Tootles/Bill Jukes/Tiger Lily/Cookson/Tinkerbell/Mermaid.....Jessica Money*
 Wendy Darling.....Campbell O'Hare*
 Peter Pan.....Jo Vito Ramirez*

UNDERSTUDIES

Jordan Chall (Peter Pan), Jane MacLaughlin (Wendy Darling), Henry Gleizer (Hook), Dallas Jimmar (Michael Darling/Slightly/Starkey/Cecco/Noddler/Tinkerbell/Mermaid), Niamh Sherlock (Jane Darling/Tootles/Bill Jukes/Tiger Lily/Cookson/Tinkerbell/Mermaid), Eliza Waterman (Aunt Liza Darling/Smee/Nibs/Tinkerbell/Mermaid)



Arden Theatre Company is a professional company employing members of Actors' Equity Association.
 *Member of Actors' Equity Association, the Union of Professional Actors and Stage Managers in the United States.

Please check houseboards for any program changes.

Taking pictures and/or making visual or sound recordings is expressly forbidden.

Actors' Equity Association (AEA), founded in 1913, represents more than 45,000 actors and stage managers in the United States. Equity seeks to advance, promote and foster the art of live theatre as an essential component of our society. Equity negotiates wages and working conditions, providing a wide range of benefits, including health and pension plans. AEA is a member of the AFL-CIO, and is affiliated with FIA, an international organization of performing arts unions. www.actorsequity.org



J. HERNANDEZ he/him (Hook) Arden: Rafael in *Clyde's*, Templeton in *Charlotte's Web*. Philly Theatre: Philadelphia Theatre Co, InterAct Theatre Co, Lantern Theatre, Theatre Exile, Quintessence Theatre Group, Play Penn, Philadelphia Artists' Collective, Philadelphia Shakespeare Theatre, Hedgerow Theatre, Commonwealth Classic Theatre Company, Shakespeare in Clark Park. Regional: Delaware Shakespeare, North Carolina Shakespeare, Texas Shakespeare Festival, Shakespeare Theatre Company. Education: University of Virginia, MFA; Texas State University, MA. Many thanks to Whit, Terry, Jonny, the cast and crew of Peter Pan, and everybody at the Arden. Mucho amor por Mandy y mi familia en Texas. Siempre resistir!



ADAM HOWARD he/him (Michael Darling/Slightly/Starkey/Cecco/Noodler/Tinker Bell/Mermaid) Arden: Wilbur in *Charlotte's Web*. Regional: Schmulis in *The Wanderers* (Lantern Theatre), Him in *Camp Siegfried* (Theatre Exile), Stanley in *Brighton Beach Memoirs* (Delaware Theatre Co.), Stinky Pete in *Carroll County Fix* (Azuka Theatre), as well as work at Hedgerow Theatre, People's Light and Shakespeare in Clark Park. Adam graduated with a BFA in Acting w/ a Minor in Creative Writing. As always, love to Mom.



LEE MINORA she/her (Darling/Smee/Nibs/Tinker Bell/Mermaid) is a writer, performer, and theater-maker living in Philadelphia. Her solo shows, *Cheeks* and *White Feminist*, have been presented at Ars Nova, The Wilma Theater, Edinburgh Festival Fringe, London's The Sick of the Fringe, Philly Fringe Festival, Z-Space, Good Good Comedy Theatre and UMS's No Safety Net. She is the co-writer and performer of *Nosejob* which was presented in the curated Fringe this fall. As a creator/performer she has worked with The Berserker Residents, Theater in Quarantine (New York Times Critics Pick) and Lightning Rod Special (NYT's Critics Pick '23 and '19, Best of Theater '19: NYT's, Time Out New York and New York Magazine). As an actor, she's been seen in over 20 productions. Some favorites include Dorine in *Tartuffe*, Suzette in *Don't Dress for Dinner*, and Mildrid in *The Hairy Ape*. She is a Barrymore nominee, a Haas Finalist and the two-time recipient of The Jilline Ringle Performance Grant. Love to my family and Matteo.

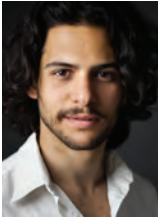


JESSICA MONEY she/her (Jane Darling/Tootles/Bill Jukes/Tiger Lily/Cookson/Tinker Bell/Mermaid) Arden: *The 25th Annual Putnam County Spelling Bee*, *Charlotte's Web*, *The BFG*, *School Girls; Or, The African Mean Girls Play*, *A Midsummer Night's Dream* (2020 Virtual Production), Understudy for *Ragtime* and *The Bluest Eye*. Regional: *The Tempest* (Delaware Shakespeare); *Ragtime* (Duluth Playhouse); *Songs for a New World* (New Light Theatre); *The Prom* (Media Theatre); *Little Shop of Horrors* (Arts Center of Coastal Carolina); *A Christmas Carol* (People's Light); *The Color Purple* (Theatre Horizon, Pennsylvania Shakespeare Festival). Education: BA in Musical Theatre (Temple University). Love to Mia and Jayson.

Who's Who



CAMPBELL O'HARE she/her (Wendy Darling) Arden: *Charlotte's Web* and *Equivocation*. She is a member of the Wilma HotHouse Acting Company where past productions include *The Good Person of Setzuan*, *Twelfth Night*, *The Cherry Orchard*, *Heroes of the Fourth Turning* (Drama League Nomination), *Dance Nation*, *Blood Wedding* (Barrymore Nom, Leading Performance) and *Rapture, Blister, Burn* (Barrymore Award, Supporting Performance). Other recent credits include: Claire/Companion in *Frankenstein* (Center City Stage), Luciana in *The Comedy of Errors* (Lantern Theater Company) and Molly in *Peter and the Starcatcher* (Delaware Theatre Company). She has also worked locally with Theatre Exile (Barrymore nominee, Ellie in *The Whale*), Theatre Horizon, Act II Playhouse, Commonwealth Classic Theatre Company and On the Rocks. Campbell plays Winnie on the D&D podcast Critical Faile DM & The Goons: The Strahdcast! Upcoming: Effie in *Iphigenia in Splott* (Inis Nua Theatre). www.campbellhare.com @redhandedjill14



JO VITO RAMÍREZ they/them (Peter Pan) Arden: Wolfgang in *Red Riding Hood*, Fred in *The Snow Queen*, Avery Arable in *Charlotte's Web*, Peter in *Peter Pan*, Daniel/Bloodbottler/Headmaster/Head of Army in *The BFG*. Regional: Petruchio in *The Taming of the Shrew*, Pericles in *Pericles, Prince of Tyre* (Shakespeare in Clark Park); Neoptolemus in *The Cure at Troy* (Quintessence Theatre Group), Claudio in *Much Ado About Nothing* (Delaware Shakespeare); Rigel in *Gumshoe* (New Paradise Laboratories). Training: B.A. Theatre, Haverford College. Jo is a musician, visual artist, and builder. To see more works, please visit jovitoramirez.com - for exclusive content, visit patreon.com/jovito. Special thanks to the Arden and the FSS crew. Love always to Juji of The Sea.

DOUGLAS IRVINE (Playwright) is the Artistic Producer of Visible Fictions. His work has been performed across Scotland, England, Ireland, Denmark, Germany, Canada, and the USA. Under his leadership, the company was the first Scottish theater company to perform on Broadway. He has also collaborated with Seattle Children's Theatre, and has directed at the Mark Taper Forum in Los Angeles and the Polka Theatre in London. He loves telling stories in new and exciting ways with puppetry, dance, video, and Foley artistry.

WHIT MACLAUGHLIN (Director) is delighted to be returning to the Arden for his 27th directing assignment. Favorites at the Arden: *The Syringa Tree*, *The Dinosaur Musical* (world premiere), *The Snow Queen*, *Hans Brinker and the Silver Skates* (world premiere), three productions of *Charlotte's Web*, and *A Year With Frog and Toad*. He is also the OBIE and Barrymore Award-winning Artistic Director of New Paradise Laboratories. His original works with NPL include commissions for the Humana Festival of New American Plays and the Tony Award-winning Children's Theatre Company, Minneapolis. Recent work (written and produced): *An Avalanche of "No," How To Get To The River*, a science-based art experience at The Academy of Natural Science, *707 Hazardous Moves*. Coming up: Sam Shepard's final play, *A Particle of Dread*, for the National Theatre of Turkey. newparadiselaboratories.com

KEVIN NADDEO (Assistant Director) Kevin is excited to make his Assistant Director debut with *Peter Pan!* Recent acting credits include: *The Lehman Trilogy* and *The BFG (Big Friendly Giant)* (Arden). BFA in Acting from University of Cincinnati - College Conservatory of Music. Thanks to Whit, the cast and crew, and especially to friends and family for their never-ending love and support! Kevinnaddeo.com

DAVID P. GORDON (Set Designer) Arden: 47 productions including *Once On This Island*, *Cabaret*, *Freud's Last Session*, *If You Give a Mouse a Cookie*, and *Sweeney Todd - The Demon Barber of Fleet Street*. New York: The Public Theater, Theatre for a New Audience, Classic Stage Company, Ensemble Studio Theatre. Regional: Wilma Theatre, Walnut Street Theatre, Philadelphia Theatre Company, Hartford Stage, Goodspeed Musicals, The Old Globe, Long Wharf Theatre, Williamstown Theatre Festival, Chicago Shakespeare Theater, The Kennedy Center. Opera: New York City Opera, LA Opera, Seattle Opera, Florida Grand Opera, Sarasota Opera, Des Moines Metro Opera, Nashville Opera, Lincoln Center. Awards: 5 Barrymore Awards, Elliot Norton Award. Chair of Theater, Mason Gross School of the Arts, Rutgers University. davidgordondesign.com

KRISTA SMITH (Lighting Designer) Arden: *POTUS*, *The Lehman Trilogy*, *Red Riding Hood*. Regional: *King Lear* (La MaMa), *The Good Person of Setzuan* (The Wilma Theater), "Eugen Onegin" *In Our Own Words* (La MaMa), *A Christmas Carol* (People's Light), *One-Man Nutcracker* (Theatre Exile), *Wig Wag* (Fringe Arts), *The Thanksgiving Play* (Dorset Theatre Festival), *What the Constitution Means to Me* (Weston Theater Company), *sandblasted*,

Who's Who

KRISTA SMITH (cont.) *Head Over Heels*, *TOWN* (Theatre Horizon), *The Mousetrap* (Hartford Stage), *Letters You Will Not Get: Women's Voices from the Great War* (American Opera Projects), *Ni Mi Madre* (Rattlestick Theater), *Zoetrope* (Exquisite Corpse Company). Training: MFA Yale School of Drama. Proud member of USA 829. www.KristaSmithLD.com

JILLIAN KEYS (Costume Designer) is stoked to be back at the Arden after previously designing: *The BFG*, *The Stinky Cheese Man and Other Fairly Stupid Tales*, *The Light Princess*, *Treasure Island*, and *An Iliad*. A UArts grad (class of 2011), Jillian has worked with many theater companies all over the city, and also does Creative Direction for events and decor installations for hospitality groups in Philadelphia, and for Comcast HQ via Our People Entertainment.

LARRY FOWLER (Sound Designer) is a Philadelphia based theater sound designer, radio imaging producer, and musicproducer whose work spans 20+ years. Recent Philadelphia designs include *Moreno* (Interact Theater); *We Have Gone as Far As We Can Together* (Fringe Arts); *The Wanderers* (The Lantern Theatre). Other theater companies Larry has designed for are Azuka Theater, PA Shakespeare Festival, People's Light, Theater Exile, Denver Center, Trinity Rep, Playmakers Rep, Steppenwolf Theater, A Contemporary Theater (ACT), Roundhouse Theater Company, Camden Rep, Rennie Harris Puremovement, ELeon Dance, Danse4Nia, Duane Holland Dance, and Khaleah London Dance. He is a 4-time Barrymore Award nominee (2018, 2019, 2024) and 2023 winner for Azuka Theater's *A Hit Dog Will Holler*.

LYNDSEY CONNOLLY (Stage Manager) Arden: Stage Manager for *The Lehman Trilogy* and *The BFG* (*Big Friendly Giant*), Assistant Stage Manager for *Once on This Island*, *Assassins* and *Every Brilliant Thing*, Deck Crew for *Clyde's*. Regional: Stage Manager for *the pigeon* (The Strides Collective); Stage Manager for *Hannah + The Healing Stone* (terraNOVA Collective). Education: Entertainment and Arts Management with a concentration in Theatre (Drexel University).

TERRENCE J. NOLEN (Producing Artistic Director) is Co-founder and Producing Artistic Director of Arden Theatre Company. Favorite Arden productions include all-Philadelphia casts of *August: Osage County*, *Death of a Salesman*, *The Grapes of Wrath*, and *Hedda Gabler*; and such musicals as *Next to Normal*, *Sweeney Todd: The Demon Barber of Fleet Street*, *Pacific Overtures*, *Violet*, and *Caroline, or Change*. Terry directed the inaugural production of Arden Children's Theatre, *Charlotte's Web*. He has directed seven world-premiere plays by Michael Hollinger, three by Dennis Raymond Smeal, three by Michael Ogborn, two by Rogelio Martinez, and Bruce Graham's *Something Intangible*. Terry has been nominated for 27 Barrymore Awards for his directing work at the Arden and received awards for *The Baker's Wife*; *Sweeney Todd*; *Opus*; *Winesburg, Ohio*; *Assassins*; *Something Intangible*; and *Fun Home*. He directed Michael Hollinger's *Opus* at Primary Stages in New York and was nominated for a Lucille Lortel Award for Outstanding Director. His short film *The Personal Touch* was nominated for an Emmy Award.

AMY L. MURPHY (Managing Director) A Philadelphia native, Amy co-founded the Arden in 1988 with Terrence J. Nolen and Aaron Posner. She is especially proud of the Arden Professional Apprenticeship program and its contribution to the Philadelphia cultural community. She completed the Executive Program for Nonprofit Leaders-Arts. Amy has served on the Board of the Cultural Alliance and Theatre Philadelphia. She has served on panels for the National Endowment for the Arts, the New Jersey State Arts Council, Theatre Communications Group and the Philadelphia Cultural Fund. Amy was named a Hepburn Fellow 2008-9 by the Katharine Houghton Hepburn Center at Bryn Mawr College.

ARDEN THEATRE COMPANY Founded in 1988, Arden Theatre Company is dedicated to bringing to life great stories by great storytellers—on the stage, in the classroom, and in the community. We create and produce new work through the Independence Foundation New Play Showcase. The Arden Professional Apprenticeship program trains future theatre leaders, and Arden Drama School classes teach children and teens about the craft of making plays. Our access program, Arden For All, makes our work available to the entire community through subsidized tickets and books for economically disadvantaged young people, and our Arden Arts Scholarship Fund provides scholarships for Arden Drama School classes and camps. The Arden has received 13 *Philadelphia Magazine* "Best of Philly" Awards, the Arts & Business Council's Arts Excellence Award, six *City Paper* "Reader's Choice" Awards, four *Philadelphia Inquirer* "Theatre Company of the Year" citations, 77 awards and 440 nominations from the Theatre Philadelphia's Barrymore Awards for Excellence in Theatre, and was named "Best Theatre Company" by *Philadelphia Weekly* in 2009. Arden Theatre Company, a professional, nonprofit 501(c)(3) theatre company, is a member of the Theatre Communications Group, the League of Resident Theatres, Greater Philadelphia Cultural Alliance, Philadelphia Convention and Visitors Bureau, and Old City Arts Association.

THE HOBBIT

Based on the novel by
J.R.R. Tolkien
Adapted for the stage by
Greg Banks
Directed by
Rebecca Wright

Turn your
PETER PAN
ticket into a
discount!*

APRIL 2 - MAY 25

For tickets: 215.922.1122 ardentheatre.org

*Call or Visit the Box Office for more details



GROW YOUR OWN WAY

Serving students
who learn
differently in
grades 1-8.

Creating confident
and competent
learners since
1970.



BENCHMARKSCHOOL.ORG

"Benchmark presented me with opportunities to succeed by teaching me different strategies and showing me that education didn't need to be a struggle. I can say that, without a doubt, I never would have succeeded academically without Benchmark."

-Dr. Alex Krenz '03



DISCOVER YOUR
EXCELLENCE
at Penn Charter

VISIT:

www.penncharter.com/admissions

1689
William Penn
Charter
School



Can you help Wendy reach Neverland?

Put the words in the correct order to reveal how to get there.



morning.

to

till

Second

star

right,

and

the

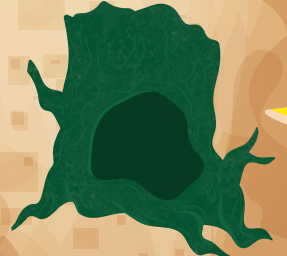
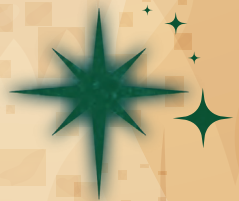
straight

on

Second

morning.

Neverland is filled with all types of characters and adventures. **Look at the map.** Who do you think we might find on our journey?





Elf

JOIN US FOR
Kids Night at The Walnut
FRIDAY, DECEMBER 13 AT 8PM
BUY AN ADULT TICKET, AND GET A KIDS' (17 AND UNDER) TICKET FOR FREE!
Note: Mention Kids Night BOGO when purchasing.
Offer good for phone and in person sales only.

The Broadway Musical

PERFORMANCES START NOVEMBER 19!

ELF - THE MUSICAL

Book by **THOMAS MEEHAN** and **BOB MARTIN** • Music by **MATTHEW SKLAR** • Lyrics by **CHAD BEGUELIN**
Based on the New Line Cinema film by **DAVID BERENBAUM**
Music and Vocal Direction by **CHRIS BURCHER!**
Choreography by **ROBBIE ROBY**
Directed by **GLENN CASALE**



WALNUT STREET THEATRE FOR KIDS



CHARLES DICKENS **A CHRISTMAS CAROL**

DECEMBER 6 – 21



APRIL 26 – MAY 11, 2025



AMERICA'S OLDEST THEATRE – PHILADELPHIA'S MOST POPULAR THEATRE COMPANY
WALNUT STREET THEATRE
FOUNDED 1808 825 WALNUT STREET • PHILADELPHIA, PA 19107

TO BUY TICKETS VISIT WalnutStreetTheatre.org
ticketmaster OR CALL 215-574-3550

2024/25

DINING PARTNERS

Restaurants in Old City and surrounding neighborhoods are ready to welcome you!
We recommend these restaurants that support the Arden.

Café Tolia*

26 N 3rd Street
267.687.2533
cafetolia.com
@cafetolia

Cuba Libre*

10 S 2nd Street
215.627.0666
cubalibrerestaurant.com
@cubalibrephiladelphia

The Franklin Fountain*

116 Market Street
215.627.1899
franklinfountain.com
@franklinfountain

Fork

306 Market Street
215.625.9425
forkrestaurant.com
@forkrestaurant

Forsythia*

233 Chestnut Street
215.701.4883
forsythiaphilly.com
@forsythia_philly

Fringe Bar*

140 N Christopher Columbus Blvd
215.375.7744
fringebarphilly.com
@fringebarphilly

High Street Philly

101 S 9th Street
215.625.0988
highstreetonmarket.com
@highstreethoagies

Khyber Pass Pub*

56 S 2nd Street
215.238.5888
khyberpasspub.com
@khyberpasspub

Las Bugambilias*

15 S 3rd Street
267.239.5673
lasbugambiliasphilly.com
@lasbugambiliasphilly

Mei Mei

33 S 2nd Street
267.979.3473
meimeiphil.com
@meimeiphilly

National Mechanics*

22 S 3rd Street
215.701.4883
nationalmechanics.com
@nationalmechanicsphilly

The Plough and the Stars*

123 Chestnut Street
215.238.0499
ploughstars.com
@theploughphilly

Positano Coast

by Aldo Lamberti*

212 Walnut Street 2nd Floor
215.238.0499
positanocoast.net
@positanocoastphilly

Race Street Cafe*

208 Race Street
215.627.6181
racestreetcafe.net
@racestreetcafe

Royal Boucherie*

52 S 2nd Street
267.606.6313
royalboucherie.com
@royalboucherie

Restaurants with * offer a special promotion to Arden patrons.
Please ask your server for details/scan the QR code for more details.

For complete restaurant descriptions visit: ardentheatre.org/dining

Dining Partners as of 11/7/24



inspiring
A LIFE OF BEAUTY



Wood-Mode designers bring your vision to life through creativity and years of product and technical training. For more than 75 years, Wood-Mode has been developing products and training that inspire our designers, so they can inspire you.

Wood-Mode[®]
FINE CUSTOM CABINETS

Visit Wood-Mode.com to get inspired, explore and learn more.

Wall & Walsh, Inc.
(610) 789-8530
wood-mode.com

8320 West Chester Pike
Upper Darby, PA 19082

Corporate, Foundation & Government Support

\$100,000 & above

Hamilton Family Charitable Trust
PA Department of Community
and Economic Development
Rosenthal Family Foundation
Shubert Foundation
William Penn Foundation

\$50,000 to \$99,999

Harmelin Media
Independence Foundation
Wyncote Foundation

\$25,000 to \$49,999

Anne M. and Philip H. Glatfelter III
Family Foundation
Comcast Corporation
The Horace W. Goldsmith Foundation
PECO Energy
Harold and Mimi Steinberg
Charitable Trust

\$10,000 to \$24,999

Anton Charitable Trust,
In Memory of
Frederick W. Anton III
Arcadia Foundation
Fox Chase Bank Charitable Fund
The Sylvia W. and
Randle M. Kauders Foundation
Lincoln Financial Foundation
Pennsylvania Council on the Arts
Penguin Young Readers+
Philadelphia Cultural Fund
PNC Charitable Trust —
Robert H. Reakirt Foundation
The Suzanne Roberts Cultural
Development Fund
TD Charitable Foundation
Truist
Univest Financial
Zeldin Family Foundation

\$5,000 to \$9,999

Civic Foundation
Cuba Libre+
Ethel Sergeant Clark Smith
Memorial Fund
The Haley Foundation
Janet Yaseen Foundation
Philadelphia Activities Fund

\$2,500 to \$4,999

Charlotte Cushman Foundation
Christopher Ludwick Foundation
Elliott-Lewis Corporation

Franklin Fountain+
Fringe Bar+
Hassel Foundation
Irene D. Cunningham Trust
Las Bugambillas+
The Lida Foundation
The Paul E. Kelly Foundation
The Plough and the Stars+
Positano Coast by Aldo Lamberti+
Republic Bank
TCF- The Community's Foundation
Virginia Brown Martin Fund of
the Philadelphia Foundation

\$1,000 to \$2,499

Alex J. Ettl Foundation
Barnes & Noble+
Bendita Foundation
BeneServ
Cafe Tolia+
Dolfinger-McMahon Foundation
Franklyn Rodgers Family Fund of
the Philadelphia Foundation
Forsythia+
Global Atlantic Financial Group
Growth Counsel LLC
Hamilton Family Foundation
Khyber Pass Pub+
Christian R. and Mary F. Lindback
Foundation
Mei Mei+
National Mechanics+
Race Street Cafe+
Rittenhouse Foundation
Royal Boucherie+
Sun East Foundation

Up to \$1,000

Actors' Equity Foundation
Bryn Mawr Presbyterian Church Choir
High Street Philadelphia+
The Pew Center for Arts and Heritage
The R. Andrew Swinney Presidential
Achievement Fund of the
Philadelphia Foundation
Quaker Printing+
Weavers Way Co-op+

Employee Giving, Matching Gift, Donor Advised Fund Partners

American Online Giving Foundation
AYCO Charitable Foundation
Bank of America
BillGO
Bristol Myers Squibb

Cadence Design Systems, Inc.
Charities Aid Foundation of America
The Chicago Community Foundation
Chubb
CIGNA Corporation
Comcast Corporation
Dell
Dun & Bradstreet
Equitable / AXA Foundation
Exelon Corporation
Fidelity Charitable
Friends of Education
Give Lively Foundation
GlaxoSmithKline
General Atlantic
Global Atlantic Charitable Gift Fund
Goldman Sachs
Google
Independence Blue Cross Blue Shield
Impact Assets
Independence Foundation
Jewish Communal Fund
Johnson & Johnson
JP Morgan Chase & Company
Macy's/ Bloomingdale's
McKinsey & Company
Microsoft
Morgan Stanley
Merck Foundation
National Philanthropic Trust
PayPal Giving Fund
PECO
Penn's Way
The Philadelphia Foundation
Pfizer
The Pledgeling Foundation
PSEG
Radion Group, Inc.
Renaissance Charitable Foundation
Sap America, Inc.
Schwab Charitable
Susquehanna International Group, LLP
T. Rowe Price
Thrivent Charitable Impact & Investing
United Way
Vanguard Charitable
William Penn Foundation

+ Denotes a gift of goods or services

This list represents gifts made
through November 15, 2024



The
Sylvan Society
Arden Theatre Company

Grounding the Present, Nurturing the Future

The Sylvan Society recognizes individuals who support the Arden's work by making annual gifts of \$1,000 or more.

The special generosity of our members enables the Arden to tell great stories by having the resources to achieve the highest level of artistic quality.

This list represents gifts made through November 15, 2024

Chestnut Grove
(\$25,000 and above)

Lois G. Brodsky
The CHG Charitable Trust
Nancy and Bob Elfant
Kate Groark-Shields
Michael Grove
Alta and N. Peter Hamilton
Joanne and Jon Harmelin
Jessica Phelan
Monica and Philip Rosenthal
Lee and Chris van de Velde
June and Steve Wolfson

Sassafras Grove
(\$10,000 - \$24,999)

Rayenne A. Chen
Christina and David Fryman[^]
Elizabeth Gemmill
Terry and Ann Marie Horner
Robert and Risa Lavizzo-Mourey[^]
Peggy Morgan and Patty Bowman
Charles Rose
Bernard and Camille Rosenberg
Hether and Don Smith
Harvey B. Swedloff

Cherry Grove
(\$5,000 - \$9,999)

Anonymous
John R. Alchin and Hal Marryatt
Richard and Kathleen Aregood
Charles Arnao and Rosemary Watt[^]
Bob and Cheryl Carfagno
Anne Cook and Russ Troyer
Ann E. Diebold
Deb Dorsey and Mike Green
Elisabeth Erlbaum
Stephen Falchek and
John Offidani III~
Richard Harris
Jim and Carolyn Hessinger
Robin and Saifuddin Mama
Alexis and Ed Pappas
Tom Petro and Kris Messner

Ceth and Sam Plum
Rosalyn K. Robinson and
Warren B. English
Sid and Ruth Rosenblatt
Sharon and Irv Shapiro
Rosalyn and Stephen Weinstein
Nancy Brent Wingo
Hope Yursa

Filbert Grove
(\$2,500-\$4,999)

Brian Abernathy and Elizabeth Ireland
Brett and Nan Altman
John and Amy Bitman~
John Coleman and Diane Runyan
John and Fern Culhane
Joy De Jesús and James Reynolds
Robert M. Dever
Michael A. and Edward C. Donato
Laura Drake
Shannon and Ted Farmer
Elizabeth Fernández-Viña~
Jill Fisch and John Gassenheimer
Linda and David Glickstein
Jennifer Harmelin
Eileen Heisman and Marty Tuzman
Ed Hillis and Audrey Cohen
Peter* and Louise Kelly
Kenneth Klothen and
Eve Biskind Klothen
William A. Loeb
Janice Madden
Michael Mallee
Barb and Don Matheson
Amy Murphy and Terry Nolen
Joel and Bobbie Porter
John and Claire Rodgers
Marilyn and Hank Royfe
Keith and Jim* Straw

Mulberry Grove
(\$1,000-\$2,499)

Anonymous (6)
Hank Adamczyk and Iris Melendez
Becky and John Adams
Diane Alessi

Stan and Lisa Altman
Winifred Anderson and Eric Lien
Stephen and Jennifer Arms
Bethany Asplundh
Jim and Janet Averill
Rhonda Ball
Sheryl and Allen Bar
Sheila Bell
Jay and Nancy Berkowitz
Linda and Mark Bernstein
Bill and Brenda Bertrand~
Sandy and David Beswick
Ian and Ryane Nicole Beutler
Andrew Bickford and
Kristina Denzel Bickford
Dr. Regina Blaszczyk and Lee O'Neill
Louis Bluver
Viola W. Bostic
DeDe and Tony Brown
Ann and David Brownlee
Vicki and Russ Carlson
Karl Carter
Christopher and Jeffrey Carver
Cordelia Clement
Barbara Cobb
Marc and Margie Cohen
Kelly Colarelli[^]
The Susan Lavine
Coleman Charitable Fund
Gregory L. Coleman
Rebecca Davis and Mark Hoffman
Ellen Deacon~
Tobey and Mark Dichter
Carol Eicher
Jonathan and Nancy Ellsworth
Lisa Fair and Bryce Quayle
Paul and Judy Farber
Mr. and Mrs. Farenback-Brateman
Donna and Norman Faye
Jeanne B. Fisher and Robert F. Lang
Carole M. Foley
Dieter and Sara W. Forster
Ellen and Tim Foster
Sandi Foxx-Jones
Lou and Rhoda Fryman
Julie and Tom Gennaro

Terry Graboyes
 Kelly Grattan and John Lopez~
 William and Joan Greenfield
 The H and R Feinberg Family
 Foundation
 David C. and MaryJane Hackney
 Ann and Glenn Haig
 Anne Halkedis^
 Ellen and Steve Harris
 Hon. Lillian Harris Ransom
 Dr. Valerie Harrison
 Don and Lynn Haskin
 Janis Hawes and Patrick Cunningham
 Charles W. Head Jr. and
 John A. Faggotti
 Heidi Hertfelder^
 Steve* and Jane Heumann
 Karen and Mark Hite
 Deborah Hluchan
 Phyllis Hochberg and Stuartz Katz
 Diane Hofer
 Jill Hyman Kaplan and Elliot Kaplan
 Rachelle and Ron Kaiserman
 Margie and Scott Kasner
 Holly Kinser
 Carol Kelley
 Steven Klein
 Peter J. and Sandra Klugman
 Steven Knepper
 Thomas and Anne Kohn
 Bernadette Koller
 Valerie Koscelnik
 Marilyn and David Kraut, In Honor
 Of Amy Murphy and Terry Nolen
 Deborah R. Kravetz and Bill Robling
 Mary Ellen Krober
 Cyana La Divertida
 Mr. Robert Leventhal and
 Ms. Cheryl Getty
 Michael MacFarland
 Richard Maimon and Susan Segal

Lee Marks and Lisl Zach
 Linda McAleer
 John and Amy McCawley^
 Peter and Laura McQuaid, In Honor
 of the amazing Arden Theatre Team
 A.C. Missias
 Joann Mitchell
 Chloe and Eric Mohr
 Leslie and Michael Molder
 Adam Mussell and Kate Whittington
 Marge Neff and Dan Winterstein
 Kathleen Nelson and John Kromer
 Arnold and Shelley New
 Mary Ivy and Roger Noone
 Michael Norris and Matt Varrato
 Susan Odessey
 Barbara Oldenhoff
 Dan O'Neil and Travus White^
 Robert Overell and Lisa Glasser
 Don and Barbara Parman
 Ronald and Pam Pontano
 Laura and Douglas Pratt
 David Pressel and Jill Feldman
 Daniel Promislo
 Aneira Puttaswamy
 Rachel and Robert Reilly
 Alan Reinach and Dana Perlman
 Alice Reyes
 Joy Rickabaugh
 E. Graham and Elizabeth Robb,
 In Honor of Lee van de Velde
 Franklyn and Cintra Rodgers
 Jane A. Rose, CPA/PFS
 Mike Salmanson and Tobi Zemsky
 Gisèle Sambar Bathish
 Becky Sassi
 Geoff Schmidt and Marie Wong
 Kim and Ross Schmucki
 Ellen Schwartz and Jeremy Siegel
 Terri Schwomeyer
 Kathy Sernak

Genieve and Clete Shields~
 Roy and Lee Shubert
 Laura and Ron Siena
 Paulette Singleton
 Gayle and David Smith
 Kathy and Don Smith
 Valerie Smith^
 The Spector Charitable Trust
 Rudy Sprinkle and Andrea Barsevick
 Mike and Shannon Stellato~
 Kathleen A. Stephenson
 Robert and Sydney Stevens
 William K. Stewart, Sr. Foundation
 Eric Tamulonis and Deirdre Gibson
 Stephen and Kathy Thompson
 April J. Tvarok, In Honor of Class 9
 Jason Vail
 Thomas and Dawn Weiss^
 Allison Weissman,
 In Honor of Bebe Maritsis
 Caitlin Wood and
 Martha Schoolman~
 Richard and Diane Woosnam
 Ellen Yin+
 Beth Zatuchni and Jerry Satlow~
 Tom and Jackie Zemaitis

* Denotes a deceased supporter
 + Denotes a gift of goods or services
 ^ Includes a matching gift
 ~Includes a monthly gift
 This list represents gifts made through
 November 15, 2024

THE LEGACY SOCIETY

Arden Theatre Company would like to recognize the following supporters who have included the Arden in their wills or estate plans. Their planned gift provides support which will help sustain the Arden's work for decades to come.

Anonymous
 Ms. Peggy Anderson*
 Stanley Baurys*
 Ivy Bayard*
 Jane Berryman
 Louis Bluver
 Mary P. Burr
 Pearl M. Carpel*
 Larry S. Friedman* and
 Dean H. Rishel
 Ellis Ginsberg*

Peter Gistelneck and Kim Bloom
 Grace Goglewski and
 Eric Schoefer
 Gary R. Grob*
 Kelly Grattan and John Lopez
 David C. and Mary Jane Hackney
 Jim and Carolyn Hessinger
 Suzanne and James Hill
 Alan and Nancy Hirsig*
 Mary Ellen Krober
 DawnLynne Kacer and Family

William Loeb
 Donald Martin and Richard Repetto*
 Peggy Morgan
 Tom Petro and Kris Messner
 Kristen Phillips and Matt Schreck
 Renee E. Polsky*
 Madeline Portnoy
 Irene M. Reiter*
 Dr. Harry Rosenthal
 Marilyn and Dean Staats
 Carolyn and Richard Weaver

We hope you will consider including the Arden in your will or estate plans. To be recognized as a member of the Legacy Society or with questions regarding planned giving, please contact Jessica Abel, Director of Development, at 215.922.8900 x149.

Thank You to Our Supporters

\$500-\$999

Anonymous
Jerry Abelson and June Idzal
Sally and Michael Bailin
Eddy and Myra Bell
Douglas Berman
Ms. Reid Bodek~
Carol and Allen Bonner
Beth Burrell and David Sorensen
Karen Cheney
Carol Cook
Warren D. and Kaye L. Crown
Kathy Duffy
W. Wallace and Joanne Dyer
Jonathan V. Edmondson^
Epstein Family Charitable Trust
John Erickson and Harry Zaleznik
Paula Fuchsberg
Dan Gannon
Janet-Lynn Garrabrant
Joseph and Jane Goldblum
Tanya Gordon
Ben and Jody Graff
Paul D. Green
Patricia Haney
Rhoda Harrison
James Hinrichs
Diane L. Hlywiak, Esquire
Glenn Holsten
Jane Kamp and Thomas Lloyd
Janice King
Holly and John Kleimo
Catherine Klinger Klutcher
Sarah Kloss
Jane S. Kramer
Ruth and Peter Laibson
David Lerman and Shelley Wallock
John and Melissa Lore
John and Martha Lubell
Mary Ellen Marzullo~
Brendan May and
Mary Kate McGrath-May
Michael McArdle
Barbara McCleary
Kathy McMaster
Julie Meighan+
Vicki Meitus
Susan and Alan Miller
Sandra S. Mock
Jackie Morrill and Mike Donahue
Shannon Mullican and Kurt Schillinger
The Norman Family
Sue and Tom O'Donnell
Shellie Peters
Claire and Lud Pisapia
Janet and John Poth
Paul Rabe and Cheryl Gunter
Susan and Steve Reisbord
Kurt and Mary-Ann Reiss
Rachel R. Reynolds
Robin Rifkin and Michael Silverman
Daniel and Faye Ross,
The Ross Family Foundation
Dan Rothermel and Michael Hairston
Mauricio Saavedra and
Joanna Sykes-Saavedra
Larry and Carol Segal, In Honor of
Susan Segal's Birthday
Joseph and Louise Shaffer^
Polly Shaffer
Thomas Sherman and
Nancy Middlebrook
Stanton and SaraKay Smullens
Barbara and Robert Stewart
Susan and Jim Strohmman
Bruce and Nancy Urbschat~

Lewis and Hella Volgenau
Donna and Andrew Wechsler
Diana Zalewski and Edward Fink^

\$250-\$499

Stuart M. Adair~
Anthony Agati
Janet Alwang
Marilyn and John Anthony
Bree Archambault
Sandra Axelrod
Sylva Baker
Cynthia and George Barth
Wilma Bass
Ellen Baxter and Robert Kavash
Carol Beam
Patricia G. Beck
Thomas Bender
Gretchen Bender
Mr. David Berch
Sara and Bruce Berger
Timothy Berger and Sarah Mooers
Ruth Berman
Charlotte H. Biddle
Fern and Bob Billet
Barbara Bisgaier
Linda and Alden Blyth
Janice Bogen
Miriam Bowerman
Alice Bronstein
Dr. Stephen Bulova and Eleanor W.
Bulova
Ms. Monika Burke
Sabra Cameron
Chip Capelli, In Honor of Amy Murphy
Elizabeth Cerkez and Alec Schoenfeld
Arlene Cessna
George and Barbara Chalmers
Leah Chaplin and Eileen Gildea
Edward Chiginsky
Annemarie F. Clarke and David L. Buch
Diane and Patrick Close
Deborah Co
Mark Cohen and Marty Johnson
Mary Coleman
Janet and Richard Conn
Janet Cook
Susan Cook and Jeff Staikoff
Betty Cooper
Carol Copland
Mary Jo Courey
Hillary and Gene Curran
Cynthia D'Ambrosio
Paul Danifo
Nancy DeLucia
Marla and Andrew Diamond
William Diebold and Deborah
Freedberg
Robert Dinardo
Stuart and Diana Donaldson
Angela D'Orsi and Dean Beer
Barrie duBois
Jeff and Michelle Eichen
Sally and Stewart Eisenberg
Anne Ewers
William and Anne Ewing*
Norma A. Fabian
Antionette Farrar Seymour
Cheryl and Steven Feil
Mark and Rene Feitelson
Victoria Ferguson
Jay Finestone and Randy Jill Schwartz
Victoria Ferguson
John and Nancy Fischer
Jacqueline Foldesy
Kimberly Foster^

Allan P. Freedman and Amy Rappaport
Paul Friedman
Tong Ming-Fu
Brenda Furtak
Bernadette Gallagher
JJ Garcia and Charlie Dreisbach^
Jesus Garcia
Joel R. Gardner and Holly A. Phelps
George and Dona Garrettsen
Janet Ginzberg and John Caskey
Rena and Henry Goehl
Ilse Goldfarb
Jay Goldstein
Joyce Goodman
Eileen and Norman Gray
Rita Greenfield
Trudy and Paul Gutterman
Marlane and Harvey Guttmann
Henry and Joyce Halpern
Caroline Harries
Carol Hauptfuhrer
Dan and Monica Hilferty
Terry Hirshorn
Cindy Hoffman
Michael J. Hozik and Margaret L. Rea
Jim Hutchison and Nanci Ritter
Dave F. Huting
Meghan Ignatosky^
Karl Janowitz and Amy Goldman
Jennifer Jenkins
William Jordan*
Kenneth Foster and Mary Jenkins
DL Kacer
Philip* and Marge Kalodner
Phyllis Kauffman
Douglas and Ruth Keating
Susan Kellogg and Dick Hoffman
Michael and Marie Kenis
Kate Kidder
Stephen Kieran
Megan Kiesel
Paul R. Kleschick III
David Knowlton and Diane Zompa
Ellen Kurtz
Joyce Laskin
Andrew and Lynn Lees
Drs. Bob and Joyce Leonetti
Ruth Lesser
Anna Levinger and
Bree Lowdermilk
Natalie Levkovich
Edward Lundy and Debra Reiff
Cirel and Howard* Magen
Kathleen Mahan
Rose Malague
Ruth Mandelbaum
Murray Margolit
Michelle McFarlane
Jeffrey Minehart
Eric Moss
The Kathleen J. Moyer Charitable Fund
Mr. Joe Norton
Paul Nutaitis and Robert Clark
Deb Olley and Brian T. Murphy,
In Honor of Deb Dorsey
and Mike Green
Tim O'Malley
Linda Osler
Fred Ott
Robert Ourach
Kimberly C. Oxholm and Carl Oxholm
III
Mr. Larry Pace
Michael and Judy Paul
Ms. Doris Peltzman
David and Amy Pollack



ARDEN DRAMA SCHOOL Winter 2025

Action packed and taught by theatre professionals!
Learn more and register online at ardentheatre.org



Looking head for ARDEN SUMMER CAMP?

Sign up for updates at ardendramaschool.org



**THE YOUNGEST AMONG
US HAVE THE BIGGEST
DREAMS & ASPIRATIONS.**



*Help your child realize her full
potential at The Baldwin School.*

**The best all-girls
private school on the Mainline.**

Baldwin

A Pre-K – Grade 12 School for Girls



**SCHEDULE A
VISIT TODAY**

Sandy Portnoy
Ilene and Coleman Poses
Nick and Peg Potalivo
Gail and Jerry Raznov
Eleanor and Joseph Reinhardt
Mr. and Mrs. William H. Rivers Jr.
Edward and Geryalyn Rock
Robert L. Roessler
Maxine Romano
Shelley Rosenberg
Sue and Hal Rosenthal
Anthony Rostain
Adelle Rubin
Amy and Mitch Russell
Suzanne Ryan
Suzanne and Kip Salus
Marilyn Sanborne and
Richard J. Labowskie
Rita Schaer
Nancy Scharff
Karen Schermerhorn and Evan Seymour
Carl W. Schneider
Perlita and Frank Schorfheide
Bonnie Schorske
Jackie Schroder
Lauren and Daniel Schwartz
Lawrence and Carol Segal,
In Honor of Richard
Dan and Hanna Shapira
Elaine Sherman
Jim and Cathy Shippen
Diane Silverhardt
Amanda Spann[^]
Virginia Spykerman
Emily Steiner
Elsie Stern and Steve Cohen
Rita and Neil Stevens
Gay Strickler, In Honor of Anne Cook
Elan Strominger
Edward and MaryAnn Tierney
Matthew Tom
Adrienne Topic
Margaret Evans Tuten
Bryan Ullishney[^]
Richard Urbani
Carol and Paul Vahlstrom
Judith Voet
Mark Wade
David Warshal
Marlene Weinberg
Vivian Weinblatt
Abigail Wolf and Jonathan Weiss
Judith L. Wellington
Caroline West
Doris A. Williams
Jim and Jean Wilson
Linda Witt
Linda Wood
Sue and Eric Woolf

\$125-\$249
Anonymous (8)
Judy Aaron
Rhoda Abrams
Lawrence and Patricia Abramson
Thomas Achenback
Eleanor Adam
Barbara Adams, In Honor of
Susan Segal's Birthday
Estelle Alexander
Michael Allen
Jenys Allende
Virginia Alpaugh~
Helene Amster
Melba Axelrod

Thank You to Our Supporters

Camille Bacon-Smith
Nelson Bagby
David J. Baker
Esther Balkin
Theresa Bambino
Charlene and Keith Bance
Cecily Banks
Theresa Baraldi
Judy Barbush*
Ronald Barras
Robert and Sandy Clay Bauer
Fred Baurer
Susan Becker and Aaron Rubin
Amy Brantz and Edward Bedrick
Jennifer Bell
Sue Bentson
Claire and Joseph Berger
Donald and Sheryl Berger
Marcie and Robert Berke
Frank Bernard
Sandy Betner
Barry and Marilyn Bevacqua
Bill Bissell, In Honor of
Arden Theatre Box Office Staff
Barbara Black
Mr. and Mrs. Larry and Joyce Bloom
Nathan Blum and Barbara Rolnick
F. William Bogle
Ernest Bollin
Elizabeth Bond
Gwen Borowsky
Nicholas Bosshardt
Helen Boyle
Michael P. Boyle
Lorena Broesamle
Barbara Bromfield
Alice Bronstein
Katherine Brown
Sarah Campbell
Vincent Cancro and Donna Davenport
Chester Allen Carson
KC Casey
Avigail Caspi Lebovic
Caroline M. Castagno
Margaret and Phillip Cavanaugh
Anne Chain
Kamesh Challuri
Dr. Lawyer and Mrs. Rosetta Chapman
Maureen Charnitski
Mr. Joseph Chaya
Barbara Citerone
Tawny Clark
Mary Cochetti
Gert Cohen
Howard Cohen
Everod Coleman
Michael Coleman
Rick and Carol Collier
Kristina Collins
Gina Collier
Janet Connor Love
Donna Cordner and Brent Groce
Gladys Corrodi
Barbara Cortese
Joan Countryman
Michael and Nancy Crawford
Jill, Katie, and Hank Croft
Alexander Curtin
Joseph and Helen D'Angelo
Todd and Christine Darr
Anne Davenport
Katherine Davies
Bill Davis and Lisa Handler
Emily L. Davis
Nancy and Ken Davis
Robert and Bonnie DeAngelo

We are proud to support

Arden Theatre Company

HARMELIN MEDIA

More than forty years of
transforming advertising.

More than forty years of
supporting the arts.

harmelin.com

Francis de Regnaucourt
Emilia Demarco
Teri Dicesare
Rhonda Dickey
*George F. Koch, Jr. and
Santo A. DiDonato
Susan Dinan
Jeanne Doherty
John Doherty
Joseph and Virginia Dominic
Joanne Donahue
Lucille Schlack Drake
Judith Drasin
Laura Duffy
George Dvorak
Robert Earle[^]
Michael Edelman
Anne Egan
Linda Ellsworth
Carole Epstein
Edmund and Judy Erde
Ted and JoAnn Erfer
Morgan Everitt
Adelaide Ferguson and Ron Cahan
George Feuer
Gene Fiducia
Pamela M. Fisk
Diane and John Fitch[^]
Judy Flander

Judy and Hal Fliegelman
Donald Foote
Alan Freed
Elyce Freedman
Paulette Freeman
Brenda Freitag and Chet Tuthill
Douglas Frenkel and Marlene Weinstein
Maryanne Noel and Philip Friedman
Phil and Carol Fuoco
Abraham Gafni
Suzanne Gallagher
Miriam Galster
Ofelia Garcia
Susan Gasteyer
Greg Gephart
Scott and Lynda Glading
Joan D. Gmitter
Dick Goldberg
Daphne Goldman
Diane and Frederic Graboyes
Marianne and Donald Green
Adele Aron Greenspun
Rick Greenstein and Claudia Tesoro
Celeste Griffith
David and Myra Gutin
Joanne Halscheid
David and Janice Haman
Elizabeth Harman
June Hament

Thank You to Our Supporters

Tahirah Harrigan
Beverly Hayden
Elizabeth Heller-Mesznik
Alice Hennessy
Susan Herron
Les and Mary Heselton
Wendy and Steve Hess
John and Marcia Hiehle
Thelma Hilibrand
Margaret Hill
Richard and Barbara Hirsh
Maryl and William Hitchings
Johnnie Hobbs
Alexa Hogarty
Robert Holland
Esther and Robert Hornik
Edward Hoy
Chris Hoyler and Bob Jackson
Geraldyn Humphrey
Jill Huntley Taylor
Thomas Hurster and Jacqueline Salmon
Dave Ingram
Peter and Nora Hunt-Johnson
Maurice Johnson
Jeanette Johnson
Bruce Joss
Glenn Kalina
Barbara and Leslie* Kaplan
Karen Kaplan^
Anne Kasprinski
Steven Kavanaugh
Colleen Keith
Brian Kennedy
Cindy Kesselman
Robert and Susan Kettell

Julia Kharlip, In Honor of
The Lehman Trilogy Production
Rachel and Will Kipnes
Cheryl and John Kirby
Laura Kirby
Brian and Caren Kirschner
Charles Klaniecki
David Klein
Ken, Eva, and Aaron Klein
Susan Kleinman
Lora Kline
Jerry and Deena Koffler
Michele and John Koskinen
Gregory Koutnik
Christine and Matt Kozsuch
Vicki and Don Kramer
Richard G. Krassen
Louis Krause
Maureen Krueger
Denise A. Kuhn
Barry and Janet Kushner
Roman and Melaku Lakew
Andy Lamas and Ginny Vanderslice
Medita Laville
William Lederer
GeorgeAnn T. Lenard
Susan Levin
Darlene Levin
Ely and Sarah Beth Levine
Arlene Liebman
Norman and Sylvia Lieberman
Mary Lee and Bill Lieser
Lisa Linder and Richard Grossman
Victoria Lipoff
Laurel and Robert Lipshutz

Brian Litt
Audrey Litto
Kathryn Loitz
Jacqueline Loli
Greg Lord
Howard R. and Jennifer Lurie
Susan and James Lytle
Richard and Scotia MacRae
Theresa Mader and David Suter
Dan Maier
Miriam Mandell
Joseph M. Manko
The Mantione Family
Moshe Margolin
Barbara J. Marshall, In Honor of
Barbara Marshall
Deb Martin
Sharmain Matlock-Turner
Ken and Margery Maurer
George and Judy McCarthy
William McCauley
Patricia McCole
John McCormick and Ken Schmitt
Alice McCreary and David Epler
Gavin McCullion
Dagmar McGill
Kathleen McGrann
Virginia McIntosh
Louise McLeod
Becky McMahan
Lorraine and Bruce McMahan
Shawn and John McMillan
Arthur and Sallie Melvin
Adrienne Mendell
Alyson Mercer



*Visit us at 110 Market St. Old City Philadelphia
or Order online ShaneCandies.com*

Thank You to Our Supporters

Mary and Robert Metrione
Cheryl and Gerald Meyer
Barbara Miller
Frances Miller
Sandra and Martin Miller
Michael Milone
Dale Mitchell
Mary Fran Moeller
Jen and Jonathan Molod
Florence Momplaisir
Valerie Mond and Ed Nowak
Gina Moore
Calibous Moskowitz
Mary Mullarkey
Sandra Murray
Ken and Sue Myers
Stephanie Naidoff
Ann Marie Nasuti
Marissa Neale
Heather Neff
Helen Newbold
Claiborne Newlin
Karen Nice
Etta and Charles Nissman
Frances Novack
William Norton
David and Monda Noyes
Alan Oberman
Grace O'Dowd
Nora O'Dowd
Patricia Ogiony
Jim Ortega
Dr. Douglas Overtoom
Abbey Owens
James Pabarue
Susan Lee
Alan and Bryna Paston
Teresa Peterson
Kristen Phillips and Matt Schreck
Deborah Pines and Carl Perchonock
Martha Platt and Marlis Kraft
Lois and Paul Plotnick
Alma Plummer Marshall
Jeffrey and Elizabeth Podraza
Theodore Politis
Victoria Pratt
Dr. Tom and Candace Pratt
Antoinette Pressman
Ruth Prushan
Joel Quast
Pamela Quinn
Mark and Karen Reber
Stanley and Rita Reichlin
Mary Jo Reilly
Susan and Steve Reisbord
Judith Richter
Barbara Rice
Gary and Robin Risler
Marjorie Risman
Cathy Robinson
Mrs. Deborah Robinson
Renee Rollin
Lou and Laura Romano
Tracy Romans
Carey and Robert Roseman~
Richard and Anne Rosenberg
Edwin and Sally Rosenthal
Libby Rosof and Murray Dubin
Richard Ross
Diane Rossheim
Barbara Rubel

James Rush
William Russell
Joan Ryder and Robert Ludwig
E. Ruth Sachs
Bill and Joan Sidel
Sandra Sborofsky
Barbara Schaffer
Les Schlessinger
Carolyn Seplow and Adam Bailine
Marvel Shmiefsky
Jill and Kerry Schuman
Mark and Nancy Schure
Evelyn and Harold Schwartz
Elena Selina
Lisa Semeraro^
Hermene Shapiro
Irving Shapiro
Stacie Shepard
Iris Shiftan
William Shoff
Mel and Susanne Shuster
Paul Siegel
Marilyn Sifford and Robert Butera
Robert and Harriet Singer
Rebecca Sinkler
Arnold Skolnick
Helen Smeltzer
Harriet Smith
George R. Smith
Walter Sobon
Jeffrey Sorkin~
Patrick Sorrells
Rudy Spraycar
Marilyn Staats
Megan Staples Jacob, In Honor of
Amy Murphy
Stephanie A. Steed
Margaret Stein
Michael Stelle
Steven Stern
Sarah Stitzer
Catherine Stock
Daniel Szyld and Kathleen Ross
Dr. Dolores Szymanski
Linda R. Tabas
Kenneth Tartof
Sylvia and Frank Tarzanin
Maxwell Thoeni
William Thomas
Thomas Thompson
The Tobias Family
Gina Tomkovich
Elizabeth Townsend
Marian Tracey
Linda Traver
Jane Trentacoste
John Urofsky
Darrell Velegol
Tom and Patricia Vernon
Alec Vidal
Lorine Vogt
Deborah Volkmer
Sandra Vondeling
Ann Walker
Patrick and Kathleen Walsh
Bo Wang
Tom and Beth Warms
Ellen Wasserson
Melinda Watts
Linda Waxler
Shelly and Fred Weiner

Renee Weisband
Bebe Weiss
Rashida Wellbeck
Suzanne L. Weston
Anne Wittkamp
Leon and Phyllis Wolf
Hon Wong
Robert Woodcock and Sally Leiderman
Jodie Yanno
Barbara Yorke
Dina Zimbardi
Pamela Zitta
Heidi Zod

\$75-\$124

Anonymous (10)
Anonymous, in Honor of
Betsy Oliphant Ross (2)
Lawrence Abel
Eileen Abel
Carole Abercaugh
Diane Ajl
Hilary Alger
Peter Allen
Barbara Amstutz
K. Anderson
M. Faith Angell
Jay Anstee
Patricia A. Armitage
Nancy Atchison
Rosalie August
Dr. Rita Axelrod
The Babilonia Brunés Family
Theodore Bahner
Cecil Baker
Pam and Earl Ball
Rebecca Baranowski
Janine Barbara
William Barcklow
Marlene Bareiss
Joseph Bartman
Carolyn and George Bassett
Terry Baver, In Honor of
Jackson and Gavin, our Grandsons
Oksana Baydina
Frances and Michael Baylson
Richard and Eileen Bazelon
Thomas and Eileen Beck
Jim Becker
David Behrend
Michele Bennett
Livia Berardi
Zak Berkman
Irene Berkowitz
Connie and Dick Berman
Estelle Blaustein
Amy Bleakley
Jocelyn Block
Thomas Boghosian
Linda and Andy Borson
Iris and Michael Boshes
Marcia Bower
Amy Bowers
Hazel Bowers
Cynthia Boyd
Erin Boyle
Brian Boyle
Virginia Brabender
Stanton and Jill Braid
Karen Bramblett
Joseph and Mary Lou Breidenstine

To join the *Sylvan Society* or for more information on how you can support the Arden, please contact Orelí Uzdavinis, Manager of Individual Giving, at 215.922.8900 x131 or ouzdavinis@ardentheatre.org

FORK

LUNCH BRUNCH & DINNER



306 MARKET ST PHILA | FORKRESTAURANT.COM

James Beard
Foundation

ELLEN YIN, OUTSTANDING RESTAURATEUR

Esquire "100 RESTAURANTS AMERICA CAN'T AFFORD TO LOSE"



We Go Further



Lower School • Nursery-Grade 5
228 Old Gulph Road, Wynnewood, PA

Middle & Upper School • Grades 6-12
1101 City Avenue, Wynnewood, PA

friendscentral.org/visit

Thank You to Our Supporters

Terrence Brennan
Jennette Brian
Julianne Brienza
Eadie and Allan* Brooks
Kathleen Brooks
Ted and Susan Broom
Robert Brophy
Doris Broudy
Patricia C. Brown
Elijah Brown
Cathy and John Bryck
Michael P. Buckley and Mason Barnett
Joanne Burak
Nora Burridge
Dorothy E. Byrne
John Calaitges
Francis and Mary Calter
Virginia* and Samuel Cameron
Anthony and Jaque Camp
Andrea Caniglia
Carolyn Cannuscio and Daniel Rader
Stephen Capadona
Larry Carlin
Lise and Dick Carr
Mr. Keith Case
Joseph Casey^
Debbie and Allan Casnoff
Lillian and William Cassel
John Cella
George and Barbara Chalmers
Stuart Charmé
Kathy Chase
Janet Cherry
Ed Chew
Susan Chisholm
Emily Cieri

Ivor Clark
Karen Clark
Tom Clark
Helene Cohen
Judy Cohen
Beth Cohen
Jacquelyn Cohen
John Collett
Barbara Collier
Peggy Conner
John Cooke
Dr. Cynthia Cooke
Sarah Cooper Searight
Elizabeth Cornman
B. Karen Coyne
George Craig
Heather Crane
Sarah Crawford
Kortney Cruz
Marie Cruz
Veronica Cuccinotta
Barbara and David Curtin
John Dale
Ms. Dorothy Dalton
Barbara A. Daneluzzi
Cheryl Dannenbrent
Benjamin D'Annibal
Beth Darrow
Gilbert Davis
Susan Davis
Thomas and Eileen Davis
Ms. Elizabeth Deegan
Paul Deigendesch
Catherine Del Duca
Cordelia and Don Delson
Michelle R. Denburg

Nancy and Nishan Dersimonian,
In Honor of Clayton Tejada and
Arden Front of House Team
Kathleen Detreux
Judy Dinn
Alan and Fran Domers
David Donaldson
Frank and Sara Donnelly
Bill Dooley
Rosanna Dorazio
Alexander Dragovich
Daniel Drexler
Robert and Renee Dubin
Carol Dudnick
John Dulik and Sandra Folzer
Marian Duncombe
Alice Dungan
Faith Edelman
Richard Egan
Larry Eichel
Susan Ellenberg
Selma Ellis
Jason and Jennifer Ellsworth-Aults^
Dr. Beverly Emanuel
Linda Emerick
Suzanne Erickson
Karen Ernst
Alan Ettenson
Dorothy Evensen
Sonja and Thomas Eveslage
Susan Extein and Lucy Hyatt
Anne and Steven Fassler
Lona Farr and David Voellinger
Cari Feiler Bender and Rodd Bender
Winifred Fessenbecker
Jeff Filipkowski



My first play at the Arden was The Boxcar Children, a Children's Theatre show. I love doing Children's Theatre because I just think it's so important for, not necessarily building future actors, but just the imagination of it all.

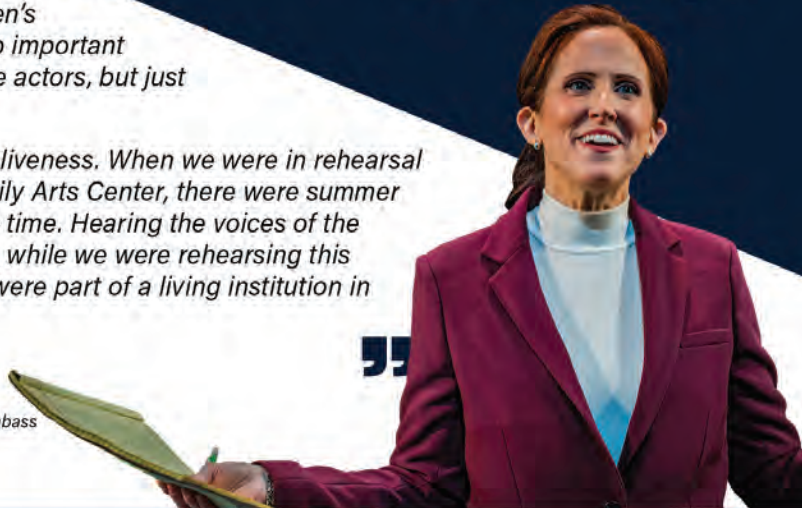
Working at the Arden there's an aliveness. When we were in rehearsal for [POTUS] at the Hamilton Family Arts Center, there were summer camps going on almost the entire time. Hearing the voices of the campers throughout the building, while we were rehearsing this hopeful play made it feel like we were part of a living institution in a way that was exciting.

- Karen Peakes

Photo Credit: Karen Peakes as Jean in the 2024 production of POTUS Or, Behind Every Great Dumbass are Seven Women Trying to Keep Him Alive.

All Photos by Ashley Smith, Wide Eyed Studios.

Your support ignites creativity!



Your donation has a direct impact on our work on the stage, in the classroom and in the community! Go to the Box Office and make your donation today!

Donate Online:



ardentheatre.org/donate

Thank You to Our Supporters

Jill Fink
Leila Finkelstein
Cindy Fishman^
Sarah Flook, In Honor of
Betsy Oliphant Ross
Tamara Forstater
Kathleen Foster
Abbe Fox
Irene Frangatos
John and Elaine Frank
Alexandra Frank
Ms. Judy Frank
Allyson J. Frank
Diane Frankel
Susan and Paul Frederic
Barbara Freed and Alan Mittelman
Rebecca Freedman
Fran Freedman and Job Blum
Paulette Freeman
Martha Friedman
Martin Friedman
Marie Fritzingler
Dr. Stephen and Ardith Garland
Lisa Gates
Jenna Gavaletz
Charles Gear and Anna Lee Morgan
Marguerite Geiger
Mary Geisz and Keith Pryor
Coeli Genter
Eric Gerstel
Blossom Gica
Gwen and Alvin Gilens
Marylouise Gladish
Philip and Karen Glick
Ms. Etta Glickman

Marion Goldberg and Paul Keller
Brian Goldsmith
Heather Golin
Jacqueline Gonatas
Bob and Jan Goren
Marie Gottschalk
Rick and Sharon Graham
Phillip Graneto
Joshua Grant
Victoria and Duncan Grant
Donna Grasson
Ellen Greco
Cheryl and Jonathan Green
Alan and Sara-Ellen Greenberg
Jonathan Greene
Kaitlin Gregory
Adam Gress
Stephen Griffey and Melinda McGough
Frances Grubb
Joanne Guarnieri
Dan Gutierrez
Mr. Mark Haas
Bobbie Halpern
Teresa Hanssens
Mary Kate Harkins
Jessica Harms
Barbara Harris
Russell Harris
Shelley Harris
The Harris Ketterer Family
Carol Harrison
Palmer and Judith Hartl
Libby Harwitz and
Burton Blender
Susan Havens-Lang

Jenn Hayden
Kenneth Heiings
Patrice Heller
Irene Hempstead
Stuart Henderson
Karen Hennes
Angela and Michael Hennessey
Don Henry
Abe Henry
Trudi and Irv Herman
Dr. William Herring and
Mrs. Patricia Herring
Leigh Ann Hewston
Kirsten Hickerson
Barbara Hilgen
Mershon Hinkel
Leonard and Audrey Hoffman
Mrs. Elizabeth Hollinger
Hollie and James Holt
Dr. David O. and Patricia Holtz
Marie Horchler
Dr. Mindy and Jay Horrow
Caren and Stuart Hosansky
Lynda Hubbell
Michelle Hudson
Kevin Hunt
Ellen Huyett
Evelyn Rosen
David and Sylvia Jacobs
Greg Jaffe
Dr. and Mrs. William Jantsch
Rebecca Jarosh
Stacey Jarrell
Rosemary and Ejner Jensen
Leah Johnson and Damien Suqarrell



123 Chestnut Street

Entrance on 2nd

Philadelphia

WWW.PLOUGHSTARS.COM

The Plough & The Stars

Before or After the Show

Arden guests receive

10% off their meal!

Thank You to Our Supporters

Daniel Johnson
Phyllis Jones
Warren Joseph
Edward Kahn
Lisa Kahn
James Kaib
Ellen Kaplan
Patricia Kapur
Dr. Rhonda Karp
Judy Kastenber
Mimsye Katz
Lucy Kaufman and Matt Lockwood
Jennifer Kay
Joyce Kay
Rosamond and Sherill Kay
Chris and Bridget Kelleher[^]
Frances and Paul Kende
Megan Kennard
Barbara Kessler
Toni and Herbert Kestenbaum
Christina Kind
Jay and Bebe Kivitz
Marlena Kleit
Rita Klinger
Veronica and Gary Klocek
Margaret Klock
Barbara Klock
Lorraine Kobeski
Theodore and Amy Kokas
Ellen Kopeland
Judith Kornfeld
Alysa Krain
Nassya Krlevska-Owens
Shira Kramer
Dr. Hillary Kruger
Will Kumpas
Christopher Kurtz
Alan Kutner
Daniel Lai
Lois Landis
John Landreau and Sherri Grasmuck
Joan Lapayowker
Melanie LaPenta
Sigrid Larson
Martin and Hannah Laufe
Alexandria Leitao
Joe Leonard
Maria Lerman
Howard and Susan Levinson
Michael L. Levitan
Rafael Levites
Madeline Levy
Bella Lewensohn Schafer
Joanne Lewis
Missy Lide, In Honor of
Betsy Oliphant Ross
Wendy Liebling
Patricia Lima
Barbara Lincow
Daniel and Kathleen Lipinski
Linda Litwin
Armando Llanes
Nadine Lomakin and Michael McPhillym
Deborah and Albert Lorenz
Robert Losick and Linda Nash
Larry and Nancy Ludgus
Melissa Lukach
Robert and Patricia Lynam
Colleen W. Marano
Bob and Sue Ann* Marburg

Linda and David Marder
Terry Ann Marek
Mary and Jack Markov
Randi Marrazzo
Jane Martin
Linda Martin
Nancy Martin
Robert McCarthy
Marie McCullough
Patrick McDonald and Martine Combal,
In Honor Of Betsy Oliphant Ross
Elizabeth McDonald, In Honor of
Betsy Oliphant Ross
Chris McDowell
Vicki McGarvey
Margaret E. McGovern
Brian McGraw
Kim McKnew
Donette McPoyle
Andrea D. Meals
Meryle Melnicoff
Jackie Meltzer, In Honor of
Betsy Oliphant Ross
Mark Mendenhall
Faith and John Midwood
Joyce and Mark Miller
Danny Miller
Lina Minicucci
Elisa and Dom Minni
Ann Mintz and Clifford Wagner
Laurent Moe
Melinda Montanaro
Tina Morrison, In Honor of
Flynn and his senior year
Brad Moss and Laurie Gottlieb,
In Honor of Harvey Swedloff
David N. and Laurel S. Mosteller
Geraldyn Moyer
Theodore and Theresa Munz
Joyce Murphy
Judith Nagle
Linda Naskret
Mara Natkins
Debbie Neibauer
Pamela Nelson
Hillary Nelson
Paula and Lawrence Ninerell
Marta Nolan-Alley
Amy Norr
Daniel and Jeannette Norris
Lora Northern
Judith O'Dell
Hannah Olanoff
Margaret Olson
Jenna Olszak
Jeanne Omans
Hugh O'Neill
Nicole and James Onesti
Shawn Orr
Julie and Eric Orts
Stanton S. Oswald and Phyllis Weber
Natasa Pajkovic
Michael Palazzo
Blair Pallas
Deborah Panagacos, In Honor of
Betsy Oliphant Ross
Antonio Paola
Brian Parker
Emelie Passow
Anne and Ted Patterson

Alisa Peet
Kristen Perlman
Marthenia Perrin
Belinda Peterson
Bill Pfeifer
Anna Phillips
Karen Piercy
Lucille Pilling
Jaye Pinch
Ronnie Pleet
John and Victoria Podolski
Amy Polis
Steven Portman
Eric Pumroy
Brian Rath
Timothy and Joyce Ratner
Paul and Ellen Rawicz
Matthew Reddin
Abi and Craig Reed
Kathleen Regan
Krista Reichard
Erin Reilly
Ms. Mary Reinhart
Rosemarie Retacco
John and Virginia Rice
Kenneth Richman
Dana Ridley
Jacqueline Riedel
Elisa Riesenbach
Fran Rissmiller
Marjorie Robbins
Eve and Charles Robbins
Robert Robinson
Bonnie and Len Romberg
Beverly Rosen
Maxine Rosen
Martin and Carol Rosenblum
Dean Rosencranz
Alexis Rosenfeld
Ellyn Rosenfeld
Nina Rossi
Maggie and Jay Ruane
Edward and Elizabeth Rubenstone
Bernard and Barbara Ruegauer
Janice Saibel
Desiree Salera
Robin Sampson
Katherine Sanderson
Vicki Sarnoff
Vicki Satinsky
Matteo Scammell
Karyn L. Scher
Jordan Schilling
Jane Schloss
Linda Schneider
Patty Schoelkopf
Robert Schwartz
Gail Scott and
Thomas D. Quinlan
Patricia Scott Hobbs
Hideko Secrest
Henry Seigel
Annilee Seitchick
Deniz Selman
Kathleen Senkow
Karen and Bob Serenbetz
Gioia Sharp
Sandi Sherr
David W. Sharp
Wendy and Matthew Shilling

Look around. Want to reach this audience? Advertise in our upcoming stagebill.

For more information on custom packages, please contact Michel at mmazno@manzomediagroup.com
or Kim at kritchards@manzomediagroup.com

Thank You to Our Supporters

Laura Shook
Hedvah Shuchman
Charlotte Sibley
Donald and Marilyn Silberberg
Debbie Silver
Eunice Silver
Caroline Simon
Ms. Karen Singer
Judith Skillings
Carleene and David Slowik
Dennis Raymond Smeal
Ariana Smith
Bruce and Penny Smith
Colleen Smith
Joseph Smith
Kathleen Smith
Wayne Snover and Janet Tebbel
Robert Snyder
Stephanie Snyder
The Snyder Family
Emily Soloby
Vicki and Evan Solut
Heather Speirs
Margaret R. Spencer
Pamela Spiller
Gary E. Stahl and
Deborah S. Stahl
Dionne Stanfield
Konnie Stark
Ms. Naomi Starobin
Paul Steinberg
Jerry Steiner
Dr. Christina Stasiuk^
Joel and Barbara Stewart
Louise and David Strawbridge
Fred Stuart
Kathleen Sullivan

Elizabeth Svenson
Gary and Betty Szatkowski
Cheryl Taddei
John Tarves
Elizabeth Taylor
Sandra Telep
Letty Thall
Hannah Thomas
William Thompson
Cinnamon Tinsley
The Tobias Family
Charles Todd
Bill and Patti Toner
Elizabeth Torres
Richard Trama
William Travis
Mr. Nova Tucker
Lyn Tuckman
Janize Ulzheimer
Carol Usonis
Carol R. Vahlstrom
Heather Van Horn
Valeria Vasilevski
Cynthia L. Vena
Larry Vizeel
Frank and Carol Vita
John Walber
Jonathan Waller
Carolyn Walter
Thomas Wand
Barbara Wasserman
Ellen Watson
Jacqueline Weber
Harri Weinberg
Taube and Sam* Weinberg
Sarah Weinstein
Margo Weishar

Carol Weisl
Kate Weiss
Lenore Weissberg
Sharon Wellons
Liz Welsh
Shannon Welsh
Leslie and Ellen Welson
Beverly Werner Caplan
Carol Ann Wesh
Gary Whitley
Robert C. Wickline
Howard Wiener
Carol Williams
Kendal Williams
Dora and Oscar Wilsker
Laura Windham
Angela and Michael Winterrowd~
Marcia Witlin-Basickes
Arnold Wolf and Fern Tablin
Roger Wood
Sam and Kuna Yankell
Brian and Marion Young
Loretta Young
Chris Young
Julie Zaffarano
Marc and Pam Zisselman
Esther Zoblin
Jennifer Zwetolitz

* Denotes a deceased supporter
+ Denotes a gift of goods or services
^ Includes a matching gift
~Includes a monthly gift
This list represents gifts made through
November 15 2024

POSITANO COAST

ENJOY DINNER IN THE HEART OF OLD CITY
BEFORE OR AFTER YOUR SHOW AT THE ARDEN!

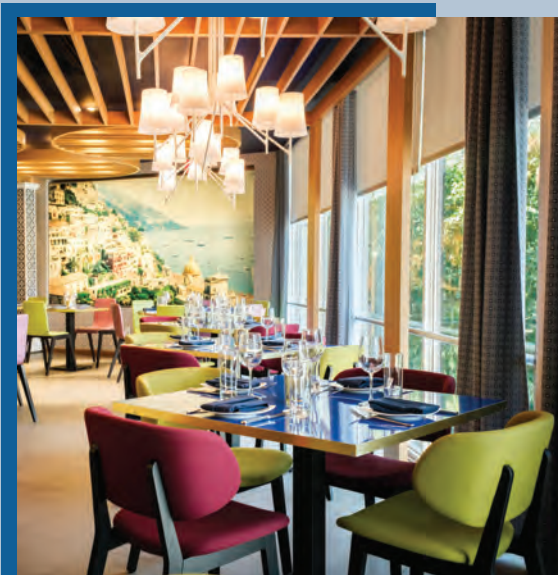


POSITANO COAST

BY ALDO LAMBERTI

212 Walnut St, 2nd Floor, Philadelphia
215-238-0499 | positano.coast.net

*Arden Patrons will receive a 10% food discount with
proof of tickets before or after the show.



Thank You to Our Supporters

Gifts in Memory Of...

ALFONSO ANDRADE

Gabriela Andrade

JUDY BARBUSH

Christine and Matt Kozsuch

TOM BEAM

Carol Beam

MARY ELLEN CONABOY

Barrie duBois

ERNEST CUFF

Ellen Deacon

MARJORIE DICKEY

Rhonda Dickey

JOSEPH FINKLER

Charles Rose

JERRY E. FREEDMAN

Sherri Freedman

LEONA E. GRAHAM

Rick and Sharon Graham

JAMES J. HANEY III MD

Anonymous (4)

Sherri Becker

Christopher Bradie

Hillary and Gene Curran

Beth Darrow

Janice Dathe

Alan and Fran Domers

Frank and Sara Donnelly

Bill Dooley

Ann Marie Fritz

Coeli Genter

Rosanne and Bob Grant

Joanne Halscheid

Patricia Haney

The Harris-Ketterer Family

Jennifer Heist

Dr. William Herring and

Mrs. Patricia Herring

Michael Johnson

Amy Kiraly

Madeline Levy

Geralyn Moyer

Deborah and Albert Lorenz

Brett Murphy

Norman Family

Sue and Tom O'Donnell

Maggie and Jay Ruane

Barbara Rubel

Scott and Maria Schaffer

Lindsay and Pete Seelig

Bill and Patti Toner

Karen and Frank Ulmer

Frank and Carol Vita

Carol Ann Wesh

Richard Wesh and Family

LUCKY HERTFELDER AND SHARON CLAUSON

Heidi Hertfelder

DR. STEPHEN KAY

Dr. Rhonda Karp

MARY C. KEENAN

Kara Keenan Sweeney

MILT AND ROZ KLEIN

Ken, Eva and Aaron Klein

JOHN KOSCELNICK

Valerie Koscelnik

SHEILA KUTNER

Dr. Beverly Emanuel

Alan Kutner

HOWARD MAGEN

Cirel Magen

SUE ANN MARBURG

Bob Marburg

MINION

The Vander Woude Family

MOXIE MCCUTCHEON

Celestine Silverman

MIRIAM NORRIS

Daniel and Jeannette Norris

KRISTIN OSGOOD LAMELAS

Diane Hlywiak, Esquire

GEORGE AND DOLORES OTTINGER

Stephen and Kathy Thompson

RICHARD REPETTO

Dan Rothermel and

Michael Hairston

ANNIE RICHARDSON

Anonymous

JILLINE RINGLE

RM Perdick and LB Smith

JULIAN ROSTAIN

Anthony Rostain

GEORGE R. SZYMANSKI, ESQ.

Dr. Dolores Szymanski

ANURADHA SEEKAY

Aneira Puttaswamy

GERI TALLONE

Scott and Lynda Glading

ASTER WAMSER

Polly Shaffer

SAMUEL WEINBERG

Taube and Sam Weinberg

DEBBY YODER

Paul and Andrea Downie

CASEY ZEFF

Eileen Heisman and Marty Tuzman

Gifts In Honor Of...

DAVID PRESSEL'S BIRTHDAY

Jill Feldman

Leslie and Michael Molder

Alexa Suskin

Gifts To Named Funds...

NAMED SEATS THIS SEASON

Kelli Hargreaves

Phil and Michelle Hatfield

Jason Vail

ANDREA MENGEL FUND

Douglas Berman

Derick Dreher

Independence Foundation

Susan Sherman

ANN B. MCNAMEE

FAMILY THEATRE FUND

Dennis and Louise Buckley

Dennis and Melissa Rodkin

Robert and Joan McLaughlin

THE BRODIE FAMILY, IN HONOR OF DR. MAMA'S RETIREMENT

The Brodie Family

THE DR. MINDY GOLDBERG ROSE INTERNSHIP FUND

Nancy and Bob Elfant

Equitable/ AXA Foundation

Charles Rose

Heidi and Mitchel Rubin,

In Honor of Nathan Dorman

Dorothy Sheridan

THE BERNARD AND CAMILLE ROSENBERG FAMILY THEATRE FUND

Bernard and Camille Rosenberg

Board and Committee Members

Board of Directors

Michael A. Donato, *President*
Rayenne Chen, *Vice President*
Rhonda Ball, *Vice President*
Michael S. MacFarland, *SVP, Treasurer*
Richard L. Maimon, *Secretary*
Kelly Colarelli
Anne Cook
Joy L. De Jesús
Robert Elfant
Nancy Elfant
Elizabeth A. Fernández-Viña
Elizabeth H. Gemmill
Peter Hamilton
Jen Harmelin
Richard Harris
Valerie I. Harrison
Ann Marie Horner
Holly Kinser
Dr. Saifuddin T. Mama
John J. McCawley, *P.E.*
Amy L. Murphy
Terrence J. Nolen
Hon. Rosalyn K. Robinson
Charles H. Rose
Monica Rosenthal
Genieve Shields
Lee van de Velde
Steve Wolfson
Diane Dalto Woosnam
Ellen Yin

Board Executive Committee

Michael Donato, *Chair*
Michael MacFarland
Rhonda Ball
Rayenne Chen
Anne Cook
Joy L. De Jesús
Holly Kinser
Richard L. Maimon
Lee van de Velde

Finance Committee

Michael MacFarland, *Chair*
Juan De León Domenech
Ann Marie Horner
Dan Hilferty
Daniel Krewson
Eliza Orleans
Harvey Swedloff
Steve Wolfson

Board Development Committee

Rayenne Chen, *Chair*
Michael Donato
Robert Elfant
Joy L. De Jesús
Holly Kinser
Saifuddin T. Mama
Lee van de Velde
Diane Dalto Woosnam

Personnel Committee

Rhonda Ball, *Chair*
Michael Donato
Elizabeth H. Gemmill
Richard Harris
Michael S. MacFarland
Charles H. Rose

Engagement Committee

Lee van de Velde, *Chair*
Anne Cook, *Chair*
Elizabeth Fernández-Viña
Nancy Elfant
David Hackney
Camille Rosenberg
Lillian Ransom
Hope Yursa

Facilities Committee

Richard L. Maimon, *Chair*
Mike Green
James Kronzer
John J. McCawley
H. Hetherington Smith
Chris van de Velde

Equity, Diversity, and Inclusion (EDI)

Rayenne Chen
Anne Cook
Joy L. De Jesús
Robert Elfant
Kash Goins
Richard Harris
Dr. Valerie Harrison
Zuhairah McGill
Amy L. Murphy
Bi Jean Ngo
Terrence J. Nolen
Hon. Judge Rosalyn Robinson
Clayton Tejada
Orelí Uzdavinis

Young Friends Committee

John Connolly
Elizabeth A. Fernández-Viña
Aby Rodríguez

Become a MONTHLY DONOR

to help sustain our daily work throughout the year!

This consistent support provides core financial stability to help keep the lights on, employ local theatre professionals, and reach even more students throughout the Greater Philadelphia area.

Becoming a monthly donor is the easiest way to increase your impact! Simply tell us how much you would like to donate monthly in the link below and we'll take care of the rest. A recurring donation of any amount helps:

**\$10
a month**

keeps the lights on during a full day of performances.

Scan to donate:

ardentheatre.org/donate



Staff

Artistic	Producing Artistic Director.....	Terrence J. Nolen
	Associate Artistic Director.....	Jonathan Silver
	Artistic Assistant.....	Nick Hatcher
	Commissioned Playwrights.....	Kash Goins, Robi Hager Rogelio Martinez, Iraisia Ann Reilly
Administrative Management	Managing Director.....	Amy L. Murphy
	General Manager.....	Clayton Tejada
	Business Manager.....	Paola Cruz
	Audience Services Manager.....	Tanner Richardett
	Facilities and Office Manager.....	Larry Brooks
	Arden Professional Apprentices.....	Abby-Jeanne Ruger, Ashley Austin, Haley Hartline, Ian Gaskin, Malena Rivera, Zycara Jones
Marketing	Director of Marketing and Communications.....	Mike Hogue
	Marketing Manager.....	Erika Byrnison
	Communications Manager.....	Aseal Saed
	Publicist.....	En Route Marketing
Marketing and Group Sales Associate.....	TJ Harris	
Development	Director of Development.....	Jessica Abel
	Manager of Individual Giving.....	Orelí B. Uzdavinis
	Development Coordinator.....	Tylar Benedetto
	Development Associate.....	Rodrick Edwards
Education	Education Outreach Manager.....	Josh Thorps
	Drama School Manager.....	Elise D'Avella
	Education Associate.....	Francine Odri
	Teaching Artists.....	TJ Harris, Campbell O'Hare, Brennen Malone, Jessica Money, Julianna Babb, Cindy Paul, Andrea Rose Cardoni, Danny Walsh, Marie McVeigh Ella Kahan, Katie Hahn, Zoe Hollander, Katherine Perry, Adam Howard, Charis Duke, Eliana Fabiyi, Eliana Pinckney, Gina Giachero, Jake Collins, Jordan Hunter-Fidalgo, Lexi Schreiber Nadia Ra'Shaun, Tanaquil Marquez, William Daniels, Daniel Matarazzo, Hallie Berger, Riley Irvine
Front of House	Box Office Manager.....	Jason Blacketer
	Assistant Box Office Manager.....	Amanda Adams
	House Manager.....	David Demnicki
	Front of House Associate.....	Kathryn Bondi
	Front of House Assistants.....	Adiah Hicks, Becky Fleckner, Catey Midla, Chelsey Gaskins, Dalia Cousineau, Emily Hernandez, Erica Lowry, Glynnis Nadel, Jenny Glickman, Laura Duffy, Mads Klemm, Margaux Cattelona, Morgan McNulty, Skyler Gonzalez, Syaera Cort, Will Vence Jr.
Production	Production Manager.....	Kate Nelson
	Technical Director.....	Evan Lewis
	Assistant Technical Director.....	John Winter
	Electrics Supervisor.....	Martin Stutzman
	Sound Supervisor.....	John Kolbinski
	Costume Supervisor.....	Stephanie Shaw
	Properties Supervisor.....	Shane Dreher
	Charge Scenic Artist.....	Brit Bannon
	Production Assistant.....	Kylen Bailey
	Assistants to the Stage Manager.....	Haley Hartline, Ian Gaskin
	COVID-19 Safety Managers.....	Clayton Tejada, Jonathan Silver
	Electricians.....	Anna Ryabova, Meghan Moore
	Electrics Programmer.....	Toni Mitchell
	Wardrobe Supervisor.....	Ryn Smith
	Audio Engineer.....	John Kolbinski
	Stitcher.....	Amanda Carano
Carpenter.....	Anna Ryabova	

CREATIVE REAL ESTATE FOR CREATIVE PEOPLE



Happy Clients

Charlie DelMarcelle
Barrymore Award
Winning Actor
Katherine Fritz
Costume Designer



BENJAMIN CAMP

REALTOR® & CCSJ Team Leader
Actor & Producer



JAMES SUGG

REALTOR®
Actor & Sound Designer

The CCSJ Team is proud to continue our *Support the Arts Initiative*, donating to local performing arts organizations for every closing. Whether you're on-stage, behind the scenes, or in the audience, choose the REALTOR®s who support our arts community.



Contact
Benjamin



📞 610.220.8550
📧 ben@ewrhomes.com



Contact
James



📞 267.303.2827
📧 sugg@ewrhomes.com

215.893.9920

THESTELLARCHOICE.COM | ELFANT WISSAHICKON
2000 PINE ST, PHILADELPHIA, PA 19103

Elfant 
Wissahickon
- REALTORS® -