

ARDEN THEATRE COMPANY PRESENTS

# INTIMATE APPAREL

By

**Lynn Nottage**



**Arden**  
THEATRE CO.

Honorary Producer:  
**Rayenne A. Chen**

**OCT 24 - DEC 1**

On the Arcadia Stage

# SUBSCRIBE TO THE 2024/25 SEASON

PRORATE YOUR TICKETS TO A 3 or 4-SHOW SUBSCRIPTION!

## HOLY GRAIL OF MEMPHIS

WORLD PREMIERE

By  
**Michael  
Hollinger**

Directed by  
**Terrence J.  
Nolen**

JAN 16 - FEB 23



## AUGUST WILSON'S KING HEDLEY II

Directed by  
**James  
Ijames**

FEB 27 - MAR 23



## RENT



Music, Lyrics, and Book by  
**Jonathan Larson**  
Directed by  
**Terrence J. Nolen  
& Steve Pacek**

MAY 15 - JUN 8



**Philadelphia Magazine's**  
Best of Philly® 2024  
Best Theater Subscription!

### To Subscribe:

Visit our box office  
Call 215.922.1122

### To Learn More:

Visit [ardentheatre.org](http://ardentheatre.org)  
Scan the QR Code



Save BIG & receive exclusive benefits!

# WELCOME

From the Producing Artistic Director



Years ago, when cleaning out her grandmother's home, Lynn Nottage found an old photograph of her great-grandmother, about whom she knew very little. As she wrote at that time, "The photograph raised a thousand questions, none of which could be answered by the living. So I placed it in a box and promptly forgot it." But of course, she didn't. That photo inspired months of research, leading to more questions, more digging through records from the early 1990's, piecing together her great-grandparents' story. That journey led to *Intimate Apparel*, a play inspired by her great-grandparents' lives, sparked by a faded photograph. As Lynn Nottage said, "It has taken the act of a new play to rescue members of my family from storage."

I love how Lynn Nottage came to write this piece. As our audiences experienced with her play *Clyde's*, Lynn Nottage has an extraordinary gift for telling stories through the eyes of characters we fall in love with, and I am honored to return to her work with this production and in awe of her continued commitment to writing plays about, as she puts it, "lives rescued from silence."

Next up is our holiday offering, *Peter Pan*. If you haven't seen an Arden Children's Theatre show, you may not know that we create world-class theatre for kids. At a time when screens of all sorts capture our attention, this is a chance to come together for an experience that will be alive, funny, and wildly creative. Come early and grab a bite here in Old City or head to Franklin Fountain afterwards for the best ice cream in town. *Peter Pan* is about pursuing adventure - daring to make one's world bigger! Come see this great story come to life during the holidays or sometime during those cold weeks in January when we're all looking for a little extra warmth and inspiration. You won't be disappointed.

Thank you for being here for Lynn Nottage's *Intimate Apparel*. Thank you for being part of the Arden.



# A Message from our Honorary Producer



Welcome back to the Arden for what's sure to be another wonderful story, told from the talented perspective of two-time Pulitzer Prize winning playwright Lynn Nottage, under the direction of the brilliant, Barrymore Award-winning Amina Robinson. One of highlights of this particular story is the spotlight Nottage places on the intersections between class, race, and gender at the turn of the twentieth century. From seamstress to salesman to socialite to sexworker, when these characters cross those cultural and economic divides, they may unexpectedly find themselves feeling exposed and vulnerable. The "intimacy" of these intersections of circumstance is what makes this play such a wonderful snapshot of our

culture and society — capturing the societal pressures and cultural traditions at the turn of the twentieth century and how resonant they still remain today.

I'm proud to support the Arden and this play as Honorary Producer. As a Board member and longtime theatre patron, I've witnessed how live arts experiences have benefitted both my family and our larger Philadelphia community. Theatre is a magical artistic medium that, like a photograph, can capture a snapshot of the values and lived experiences of the characters within a given point in place and time, while also serving as a mirror to reflect a multitude of perspectives, lived experiences, and who we are more broadly as a society. The Arden does a wonderful job of finding that balance, and I always come away from the performance with something to consider or discuss. This play artfully illustrates the power of hope, resilience, and dignity in the face of adversity. I hope this production inspires meaningful conversation about how we treat ourselves and one another. Enjoy the show!

**Rayenne A. Chen**

---

## Accessibility Services

---

The Arden complies with all applicable federal, state, and local statutes and laws to ensure accessibility to individuals with disabilities who visit our theater. We invite you to visit [ardentheatre.org/plan-your-visit/accessibility](https://ardentheatre.org/plan-your-visit/accessibility) for more details about our services and offerings.



### Accessible Seating & Seating Requests

Removeable seats for wheelchairs & Accommodations for comfort, mobility, & hearing or vision needs



### Assistive Listening Devices (ALDs)

Amplification of all onstage sounds. Ask Box Office to borrow. Available with headphones or a t-coil neck loop.



### Open Captioning (OC)

Text display of all dialogue and sounds. Available select Friday & Saturday performances.



### Audio Description (AD)

Live verbal commentary of all visual elements. Ask Box Office for access. Available select Friday & Saturday performances.



### \*NEW!\* Smart Caption Glasses (SCG)

Wearable, customizable closed captioning glasses. Available 1 week after Opening Nights. Ask Box Office to borrow.



### Large Print Programs

Enlarged-text printed programs for low-vision patrons. Ask Box Office to borrow.



### Shadow American Sign Language (ASL) Interpretation

Live ASL interpretation shadowing the action of the show. Available at select Children's Theatre performances.

We encourage any feedback and suggestions regarding our accessibility services to ensure we're doing the best we can. Please contact Tanner Richardett, Audience Services Manager, at [trichardett@ardentheatre.org](mailto:trichardett@ardentheatre.org)



ARDEN THEATRE COMPANY PRESENTS

# INTIMATE APPAREL

By LYNN NOTTAGE

Scenic Designer  
ANDREW COHEN+

Costume Designer  
LEIGH PARADISE

Lighting Designer  
ALYSSANDRA DOCHERTY+

Sound & Projection Designer  
DAMIEN FIGUERAS+

Intimacy Coordinator  
ABBY WEISSMAN

Dialect Coach  
NEILL HARTLEY

Assistant Director  
MAUREEN HENIGHAN BOOKER

Stage Manager  
ALEC E. FERRELL\*

Directed by AMINA ROBINSON

---

Honorary Producer: Rayenne A. Chen

Commissioned and first produced by South Coast Repertory and Center Stage.  
Originally produced in New York by Roundabout Theatre Company,  
Todd Haimes, Artistic Director.

"Intimate Apparel" is presented by special arrangement with Broadway Licensing, LLC, servicing the Dramatist Play Service imprint. ([www.dramatists.com](http://www.dramatists.com))

THE VIDEOTAPING OR MAKING OF ELECTRONIC OR OTHER AUDIO AND/OR VISUAL RECORDINGS OF THIS PRODUCT AND DISTRIBUTING RECORDINGS OR STREAMS IN ANY MEDIUM, INCLUDING THE INTERNET, IS STRICTLY PROHIBITED, A VIOLATION OF THE AUTHOR(S)'S RIGHTS AND ACTIONABLE UNDER UNITED STATES COPYRIGHT LAW.



Arden Theatre Company receives state arts funding support through a grant from the Pennsylvania Council on the Arts, a state agency funded by the Commonwealth of Pennsylvania.



+ Member of United Scenic Artists  
Local USA 829

\* Member of Actors' Equity Association,  
the Union of Professional Actors and  
Stage Managers in the U.S.

*inspiring*  
A LIFE OF BEAUTY



Wood-Mode designers bring your vision to life through creativity and years of product and technical training. For more than 75 years, Wood-Mode has been developing products and training that inspire our designers, so they can inspire you.

**Wood-Mode**<sup>®</sup>  
FINE CUSTOM CABINETS

Visit [Wood-Mode.com](http://Wood-Mode.com) to get inspired, explore and learn more.

Wall & Walsh, Inc.  
(610) 789-8530  
[wood-mode.com](http://wood-mode.com)

8320 West Chester Pike  
Upper Darby, PA 19082

# A Note

## From the Director



First let me begin by saying aloud that Lynn Nottage is one of the greatest playwrights of our generation. She writes with a skillfully poetic pen and penchant for creating fully realized, and beautifully intricate humans. *Intimate Apparel* is no exception. In fact, the language, story, characters, and structure of this play is itself a piece of “intimate apparel.” It is an exercise in exploring the smallest, most delicate, yet potent innermost complexities of human desire, fear, and longing that propel us. Set in New York City 1905, the story of Esther is equal parts heartbreaking and hopeful, begging the question, “What are you willing to risk, to get what you want out of life?”

Although primarily being settled by the Dutch in the 1600’s after being “purchased” from the Lenape people who were the indigenous stewards of the land, by 1905, New York City was a stewpot of global ethnicities. The land was filled with free Black Americans roughly two generations from the American monstrosity of enslavement, white Americans, and other groups of people that Lady Liberty welcomed to the shores including Southern, Western and Eastern European immigrants, Jewish immigrants, Chinese and Japanese immigrants, and more. Each adding a distinct flavor to the “gumbo” of the city. People lived lives in small communities separated from “others” by the very cultures that bound them together as an ethnic group. A society divided in many ways. Everyone yearning, however, for opportunity. Some yearning for a connection; A melting together and mixing that could ease the loneliness of navigating a nation and society on the cusp of redefining itself. For some, the sky seemed to have no limit in creating lives they wanted to live; Free, grand lives. Yet, limitations and exclusions to access to the “American Dream” were a reality for many. Not surprisingly, the apportionment of opportunities for women were sparse. They were allowed in very specific areas deemed “appropriate” for them. Black women even more so, as their lives and bodies were not cared for, loved, nor protected unless they were fortunate enough to find tenderness in their private moments with... their gentleman.

We encounter Esther Mills in this world.

“Unidentified Negro Seamstress.” Lynn Nottage

A handwritten signature in black ink, appearing to read 'Lynn Nottage'.



# Cast of Characters

|                     |                  |
|---------------------|------------------|
| George.....         | Akeem Davis*     |
| Mayme.....          | Jessica Johnson* |
| Mrs. Dickson.....   | Zuhairah*        |
| Mr. Marks.....      | David Pica       |
| Esther.....         | Brandi Porter*   |
| Mrs. Van Buren..... | Julianna Zinkel* |

## UNDERSTUDIES

Lexis Green (*Mayme*), Katrina Hall (*Mrs. Dickson*), Michael Jahlil (*George*),  
Alexa Joseph (*Mrs. Van Buren*), Cheyenne Parks (*Esther*), T. Isaac Sherman (*Mr. Marks*)



Arden Theatre Company is a professional company employing members of Actors' Equity Association.  
\*Member of Actors' Equity Association, the Union of Professional Actors and Stage Managers in the United States.

Please check houseboards for any program changes.

Taking pictures and/or making visual or sound recordings is expressly forbidden.

Actors' Equity Association (AEA), founded in 1913, represents more than 45,000 actors and stage managers in the United States. Equity seeks to advance, promote and foster the art of live theatre as an essential component of our society. Equity negotiates wages and working conditions, providing a wide range of benefits, including health and pension plans. AEA is a member of the AFL-CIO, and is affiliated with FIA, an international organization of performing arts unions. [www.actorsequity.org](http://www.actorsequity.org)



**AKEEM DAVIS** (*George*) Arden: *The Lehman Trilogy*, *A Streetcar Named Desire*, *Tiny Beautiful Things*, *Gem of the Ocean*, *A Doll's House* (Barrymore Award for Outstanding Supporting Performance in a Play). Regional: *The Merry Wives of Windsor* (Pennsylvania Shakespeare Festival); *The Arsonists* (Woolly Mammoth Theatre Company); *King John*, *District Merchants* (The Folger Theatre); *Buzzer* (Theatre Exile); *Marcus/Emma* (InterAct Theatre Company); *Lobby Hero*, *In the Blood* (Theatre Horizon); *The Brother's Size* (Simpatico Theatre). Florida State University, 2009 Bachelor's in Humanities. Barrymore and Helen Hayes nominated actor. 2015 F. Otto Haas Award for Emerging Philadelphia Theatre Artist. For Ash. And Amias.



**JESSICA JOHNSON** (*Mayme*) Arden: Chris in *POTUS*. Papa Ge in *Once on This Island* (Barrymore nominated), Jo in *The Legend of Georgia McBride*. Regional: Kaila in *STEP MOM*, *STEP MOM*, *STEP MOM* (Interact Theatre, Barrymore nominated); Opal in *Fat Ham* (Wilma Theatre, Barrymore nominated), Gina in *a hit dog will holler* (Azuka Theatre, Barrymore nominated), Odessa in *Sandblasted* (Theatre Horizon); Celie in *The Color Purple* (Theatre Horizon, Barrymore for Best Lead Performance in a Musical); Education: James Madison University. [www.jessicamjohnson.com](http://www.jessicamjohnson.com)



**ZUHAIERAH** (*Mrs. Dickson*) Arden: *Radio Golf*, *Gem Of The Ocean* (Barrymore nominated). Off Broadway: *Most Dangerous Man in America* W. E. B. Du Bois; *First Breeze Of Summer*, *Gutta Beautiful*; *Sister Sonja* (New Federal Theatre); *Julius Caesar Set In Africa* (Westside Arts Theatre); *Tell Martha Not To Moan* (Nyrican Poets Cafe); Pulse Ensemble Theatre. Regional: *The Gin Game* (Bristol Riverside Theatre); *Charlie and The Chocolate Factory* (Fulton Theatre); *An Army Of Lovers* (Azuka Theatre); *Fat Ham* (Wilma Theater); *Sandblasted* (Theatre Horizon); *Dot* (People's Light); *Sojourner* (Hedgerow Theatre Barrymore nominated); *Flyin' West* (Quintessence Theatre Barrymore Insight Award); *Sojourner* (Arena Stage); *Blues For An Alabama Sky* (Studio Theatre); *Bourbon at The Border* (Bushfire Theatre of Performing Arts). Lunt-Fontanne Fellow, Broadway Regional Awardee, LA Film Award, Black Arts Award, Barrymore Award -Choreography, Barrymore nominated-Director, Image Award. All of my performances are dedicated to Mr. James Earl Jones! Love you Ju & Mallie and family & friends. @zuhairahmcgill [zuhairahmcgill.com](http://zuhairahmcgill.com)



**DAVID PICA** (*Mr. Marks*) is an actor and educator. Arden: *Macbeth* (Understudy), *Every Brilliant Thing* (Asst. Director). Regional: Delaware Shakespeare, Shakespeare in Clark Park, PAC, Azuka Theatre, Inis Nua, Commonwealth Classic Theatre Company, Revolution Shakespeare, Lantern Theater Company, Theatre Exile, Theatre in the X, Pennsylvania Shakespeare Festival, Quintessence Theatre Group, Hedgerow Theatre, and Tiny Dynamite. Training: Millikin University, Royal Conservatoire of Scotland, and w/ The Factory. Love to Brett, Owen, and family.

# Who's Who



**BRANDI PORTER** (Esther) Arden debut! Broadway: Lutibelle u/s in *Purlie Victorious*, Letitia u/s in *Clyde's* (Original Broadway Cast), Swing/Jane u/s in *A Bronx Tale*, Frieda, Jane u/s in *A Bronx Tale* (1st Nat'l), Off Bway: Diana Ross u/s in *Trevor: A New Musical*. Regional: Passenger 4 in *\*Ain't No Mo'* (Woolly Mammoth/BCS) \*Helen Hayes Nominee Outstanding Supporting Actor; Chiffon in *Little Shop of Horrors* (Playhouse on Park); Kabibi in *Festival of the Lion King* (Disney World), Gary Coleman in *Avenue Q* (Bristol Valley Theatre), Joanne in *RENT* (Fiddlehead Theater Company). Education: Boston Conservatory, MFA. Endless gratitude to my husband, family, Saks&, and CESD. IG: @thebrandiporter



**JULIANNA ZINKEL** (Mrs. Van Buren) Arden: (selected) *74 Seconds to Judgment*, *Charlotte's Web*, *Stick Fly*, *Rabbit Hole*, *Crime and Punishment*, *As You Like It*. Off-Broadway: *Three Men on a Horse* (The Actors Company Theatre); *The Lover* (SoHo Playhouse). Regional: *Hurricane Diane*, *Barcelona*, *The Vinegar Tree*, *The Trip to Bountiful*, *The Harassment of Iris Malloy* (People's Light) *Ironbound* (Simpatico Theatre); *Dance Nation*, *Wintertime*, *Big Love* (Wilma Theater); *Blackbird* (Theatre Exile); *Fool For Love* (EgoPo Classic Theatre); *Brighton Beach Memoirs*, *Mauritius* (Act II Playhouse); *The Language Archive* (Bristol Riverside Theatre); *From Prague* (CATF); *Love and Communication* (Passage Theatre); *The Eclectic Society* (Walnut Street Theatre). TV: *Mare of Easttown* (HBO), *Fleishman is in Trouble* (FX/Hulu). Love to Z&D. [www.juliannazinkel.com](http://www.juliannazinkel.com)

**LYNN NOTTAGE** is a playwright and a screenwriter, and the first woman in history to win two Pulitzer Prizes for Drama. Her plays have been produced widely in the United States and throughout the world. Recent work includes the book for *MJ the Musical* (Broadway), the libretto for the *Intimate Apparel Opera* (LCT), and *Clyde's* (Broadway, 2ST, Goodman Theatre), and co-curating the performance installation *The Watering Hole* (Signature Theatre). Past work includes *Sweat, Ruined*, the book for *The Secret Life of Bees*; *Mlima's Tale*; *By the Way, Meet Vera Stark*; *Intimate Apparel*; *Fabulation, or the Re-Education of Undine*; *Crumbs from the Table of Joy*; *Las Meninas*; *Mud, River, Stone*; *Por'knockers*; and *POOF!*. She has also developed *This is Reading*, a performance installation in Reading, Pennsylvania. Ms. Nottage is a member of the Theater Hall of Fame, and the recipient of a MacArthur "Genius Grant" Fellowship (among other awards). She is also an Associate Professor at Columbia University School of the Arts and is a member of the Dramatists Guild. [www.lynnnottage.net](http://www.lynnnottage.net)

**AMINA ROBINSON** (Director) is an actor, director, and Professor of Acting and Musical Theater at Temple University. She is immensely excited to return to the Arden for *Intimate Apparel*. Amina has performed on Broadway, National Tours, film, television, national commercials, and various regional productions. Amina's directing credits include productions at Arden Theatre Company, Pennsylvania Shakespeare Festival, Theatre Horizon, Azuka Theatre, IAMA Theatre Company in Los Angeles, Queens Theater in New York, Passage Theatre Company in New Jersey, Lantern Theater Company and Temple University. Amina is the first Black woman to win a Barrymore Award for Outstanding Direction of a Musical for *The Color Purple* at Theater Horizon.

**MAUREEN HENIGHAN BOOKER** (Assistant Director) Arden Debut. Broadway: Soloist/Catfish Row Dancer in *Porgy and Bess*; Bregenzer Festspiele; Senior Company Dancer for PHILADANCO! The Philadelphia Dance Company. Regional: Choreographer for *For Colored Girls Who Have Considered Suicide When The Rainbow is Enuf* (The Drama Group). Choreographer/Assistant Director for *The Witch and the Magic Mountain*, Assistant Choreographer for *Purlie Freedom Theater*. Director for *Resurrection Through Dance*, *Walt Whitman Arts Center*. Assistant Director for *Mufaro's Beautiful Daughters*, Choreographer for *The Dream Project*, *The Robin Carney Project*, and *Camden Repertory Theater*. Assistant Director for *Dreamgirls*, *Zooman and the Sign*, *One Monkey Don't Stop No Show* (Theatre in the X). Education: Hampton University, Goucher College, Temple University. Thanks to Ozzie Jones, Jr. (for mentorship), Nicolette and Leslie Odom, Jr., Love to Mommy for bringing Arts to my life! Ken for loving me hard! Chad and Cy for joy! Tandy for being my Day 1! Thank you Cie-C and Ev for your BEAUTY!!!!!!

**ANDREW COHEN** (Set Designer) Arden: *Red Riding Hood*. Selected credits: *Lend Me A Soprano*, *The Crucible* (Olney Theatre Center); *Cabaret* (Studio Tenn Theatre Company); *The Till Trilogy* (Mosaic Theater Company); *The Book Club Play*, *Flyin' West* (Everyman Theatre); *King John* (Folger Theatre); *Mr. Popper's Penguins* (Imagination Stage); *The Wanderers* (Theater J); *Through The Sunken Lands* (Kennedy Center Theater for Young Audiences); *Murder Ballad* (Studio Theatre). Proud member of USA 829. [www.andrewcohendesigns.com](http://www.andrewcohendesigns.com)

**ALYSSANDRA DOCHERTY** (Lighting Designer) Arden: *Once on This Island* (Barrymore nominated), *What the Constitution Means to Me*. Select Regional: *Kinky Boots* (New Light Theatre & Delaware Theatre Company); *The Color Purple*, *The Merry Wives of Windsor* (Pennsylvania Shakespeare Festival); *Beautiful: The Carole King Musical* (Walnut Street Theatre); *Here You Come Again* (Goodspeed Musicals, Delaware Theatre Company); *Always... Patsy Cline*, *Peter and the Starcatcher*, *Noises Off*, *Man of La Mancha*, *Plaid Tidings* (Delaware Theatre Company); *A Sherlock Carol* (Westport Country Playhouse); (cont.)

# Who's Who

**ALYSSANDRA DOCHERTY** (cont.) *The Thirty-Nine Steps* (Virginia Stage Company); *The Garbologists, Sweat* (Philadelphia Theatre Company); *The Play That Goes Wrong* (1812 Productions). Education: BA in Theatre (DeSales University); Apprentice (Goodspeed Musicals). Aly is a four-time Barrymore Award nominee and one-time winner, also earning a nomination for the Ostrander Award in Memphis. [alysandradocherty.com](http://alysandradocherty.com)

**LEIGH PARADISE** (Costume Designer) Arden: *Red Riding Hood, Ladysitting, Pinocchio*. Regional: *Once Upon a Bridge* (Inis Nua); *A Case for the Existence of God* (Theatre Exile); *Crumbs from the Table of Joy* (Lantern Theater Company); *This is the Week That Is* (1812 Productions); *Elephant in the Room* (co-design, Azuka Theatre); *Last of the Red Hot Lovers* (Walnut Street Theatre); *TOWN, TJ Loves Sally Forever* (Theatre Horizon); *Bayard Rustin Inside Ashland* (People's Light). Leigh Paradise has also worked as a technician in various costume shops throughout the region for over 20 years. Thanks to Rebecca Callan (DeSales University), Rosemarie McKelvey (Villanova University), Sarah Ochocki (People's Light) for letting me run through your stocks; Morgan Porter for being my additional hands; and Stephanie Shaw and the Arden Costume Shop for all their help and hard work. Special thanks to Marla Jurglanis, Bridget Brennan, and LeVonne Lindsay for being the best sounding boards and teachers; and to my very own Mr. Marc, who always helps me see myself better.

**DAMIEN FIGUERAS** (Sound Designer) Arden: *What the Constitution Means to Me*. Regional: *Kiss* (The Wilma Theater); *Jane Eyre* (Philadelphia Artists' Collective); *The Play That Goes Wrong* (1812 Productions); *The Complete Deaths* (Curio Theatre Company); *Cabaret* (Bristol Riverside Theatre); *Athena* (Theatre Horizon); *Meteor Shower* (Walnut Street Theatre); *Antihero* (Tribe of Fools – Barrymore Nominated for Sound Design); *Moth* (Azuka Theatre – Barrymore nominated for Sound Design). As always, Damien would like to dedicate his work to the memory of his mother. [DFigueras.com](http://DFigueras.com)

**ALEC E. FERRELL** (Stage Manager) Arden: *Once on this Island, Ladysitting* (World Premiere), *What the Constitution Means to Me*, *The 25th Annual Putnam County Spelling Bee*, *Clyde's*, *Every Brilliant Thing*, *Into the Woods*, *The Snowy Day and Other Stories by Ezra Jack Keats*, *No Child...*, *My General Tubman* (World Premiere), *Indecent*, *Gem of the Ocean*, *Once, Fun Home*, *Toni Morrison's The Bluest Eye*, *TouchTones* (World Premiere), *Gypsy*, *The Legend of Georgia McBride*, *The Secret Garden*, *Metamorphoses*, *Macbeth*, *La Bête*, *Three Sisters*, *Parade*, *A Raisin in the Sun*, *Next to Normal*, *August: Osage County*, *Ghost-Writer* (World Premiere), *Blue Door*, *My Name is Asher Lev* (World Premiere). Regional: Trinity Repertory Company, Adirondack Theatre Festival, Theatre Horizon, Eugene O'Neill Theater Center. International: [untitled project] #213 (Edinburgh Festival Fringe). Proud Member of AEA, SMA. Love and thanks to the family!

**TERRENCE J. NOLEN** (Producing Artistic Director) is Co-founder and Producing Artistic Director of Arden Theatre Company. Favorite Arden productions include all-Philadelphia casts of *August: Osage County*, *Death of a Salesman*, *The Grapes of Wrath*, and *Hedda Gabler*; and such musicals as *Next to Normal*, *Sweeney Todd*, *Pacific Overtures*, *Violet*, and *Caroline, or Change*. Terry directed the inaugural production of Arden Children's Theatre, *Charlotte's Web*. He has directed seven world-premiere plays by Michael Hollinger, three by Dennis Raymond Smeal, three by Michael Ogborn, two by Rogelio Martinez, and Bruce Graham's *Something Intangible*. Terry has been nominated for 27 Barrymore Awards for his directing work at the Arden and received awards for *The Baker's Wife*; *Sweeney Todd*; *Opus*; *Winesburg, Ohio*; *Assassins*; *Something Intangible*; and *Fun Home*. He directed Michael Hollinger's *Opus* at Primary Stages in New York and was nominated for a Lucille Lortel Award for Outstanding Director. His short film *The Personal Touch* was nominated for an Emmy Award.

**AMY L. MURPHY** (Managing Director) A Philadelphia native, Amy co-founded the Arden in 1988 with Terrence J. Nolen and Aaron Posner. She is especially proud of the Arden Professional Apprenticeship program and its contribution to the Philadelphia cultural community. She completed the Executive Program for Nonprofit Leaders-Arts. Amy has served on the Board of the Cultural Alliance and Theatre Philadelphia. She has served on panels for the National Endowment for the Arts, the New Jersey State Arts Council, Theatre Communications Group and the Philadelphia Cultural Fund. Amy was named a Hepburn Fellow 2008-9 by the Katharine Houghton Hepburn Center at Bryn Mawr College.

**ARDEN THEATRE COMPANY** Founded in 1988, Arden Theatre Company is dedicated to bringing to life great stories by great storytellers—on the stage, in the classroom, and in the community. We create and produce new work through the Independence Foundation New Play Showcase. The Arden Professional Apprenticeship program trains future theatre leaders, and Arden Drama School classes teach children and teens about the craft of making plays. Our access program, Arden For All, makes our work available to the entire community through subsidized tickets and books for economically disadvantaged young people, and our Arden Arts Scholarship Fund provides scholarships for Arden Drama School classes and camps. The Arden has received 13 *Philadelphia Magazine* "Best of Philly" Awards, the Arts & Business Council's Arts Excellence Award, six *City Paper* "Reader's Choice" Awards, four *Philadelphia Inquirer* "Theatre Company of the Year" citations, 77 awards and 440 nominations from the Theatre Philadelphia's Barrymore Awards for Excellence in Theatre, and was named "Best Theatre Company" by *Philadelphia Weekly* in 2009. Arden Theatre Company, a professional, nonprofit 501(c)(3) theatre company, is a member of the Theatre Communications Group, the League of Resident Theatres, Greater Philadelphia Cultural Alliance, Philadelphia Convention and Visitors Bureau, and Old City Arts Association.



# An Intimate Design

with Costume Designer Leigh Paradise

“ I love to lock in my designs around a some kind of theme. For this show, I decided to focus on **botanicals**, specifically plants.”

## Mrs. Van Buren

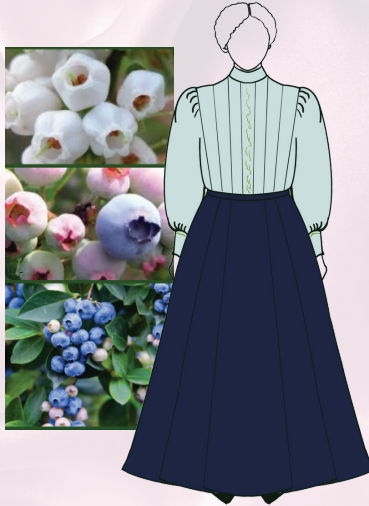
**MRS. VAN BUREN.** It's come to this. If mother dear could see what had become of her peach in the big city.



“Mrs. Van Buren's journey can be likened to a **peach blossom** that dies on the tree without ever bearing fruit. Her color choices reflect this: she begins in a world of soft white, gray, and pink—just like the peach blossoms that bloom beautifully before fading away. These blossoms start off delicate and white with a pink center, becoming pinker as they mature, typically just before they are fertilized and begin to bear fruit.”

## Esther

**MRS. DICKSON.** Never. You were a godsend when yuh come to me at seventeen. Yes, I remember thinking how sweet and young you was with a sack full of overripe fruit smelling like a Carolina orchard.



“This [quote] led me to reflect on Esther's origins in North Carolina and the fruits grown there... I settled on **blueberries**. Esther begins her journey dressed in a pale green blouse, symbolizing her initial innocence. She transitions into a white wedding dress, representing blueberry blossoms, which bloom white. As the story progresses, she shifts to pink, reflecting the fruit's ripening stages.”

## Mrs. Dickson

**MRS. DICKSON.** (*The women hug*) Look at you. I was about to take some tea, come on into the kitchen, I'm glad for your company.



“Mrs. Dixon, is like an **apple tree** representing the city of New York. Her party outfit features a vibrant tree brocade with red elements to symbolize apples, showcasing her fruitfulness and generosity as she shares the fruits of her labor with those around her. She's happy to do it, she loves doing it ”

ARDEN CHILDREN'S THEATRE

# PETER PAN

from the book by  
**J.M. Barrie**  
adapted for the stage by  
**Douglas Irvine**  
directed by  
**Whit McLaughlin**

ON STAGE  
NOV 27 - JAN 19

**BUY BOTH SHOWS AND SAVE!**

# THE HOBBIT

based on the novel by  
**J.R.R. Tolkien**  
adapted for the stage by  
**Greg Banks**  
directed by  
**Rebecca Wright**

ON STAGE  
APR 2 - MAY 25

LEARN MORE



ardentheatre.org

215.922.1122



# 2024/25

## DINING PARTNERS

Restaurants in Old City and surrounding neighborhoods are ready to welcome you!  
We recommend these restaurants that support the Arden.

---

### **Café Tolia\***

26 N 3rd Street  
267.687.2533  
cafetolia.com  
@cafetolia

### **Cuba Libre\***

10 S 2nd Street  
215.627.0666  
cubalibrerestaurant.com  
@cubalibrephiladelphia

### **The Franklin Fountain\***

116 Market Street  
215.627.1899  
franklinfountain.com  
@franklinfountain

### **Fork**

306 Market Street  
215.625.9425  
forkrestaurant.com  
@forkrestaurant

### **Forsythia\***

233 Chestnut Street  
215.701.4883  
forsythiaphilly.com  
@forsythia\_philly

### **Fringe Bar\***

140 N Christopher Columbus Blvd  
215.375.7744  
fringebarphilly.com  
@fringebarphilly

### **High Street Philly**

101 S 9th Street  
215.625.0988  
highstreetonmarket.com  
@highstreethoagies

### **Khyber Pass Pub\***

56 S 2nd Street  
215.238.5888  
khyberpasspub.com  
@khyberpasspub

### **Las Bugambilias\***

15 S 3rd Street  
267.239.5673  
lasbugambiliasphilly.com  
@lasbugambiliasphilly

### **National Mechanics\***

22 S 3rd Street  
215.701.4883  
nationalmechanics.com  
@nationalmechanicsphilly

### **The Plough and the Stars\***

123 Chestnut Street  
215.238.0499  
ploughstars.com  
@theploughphilly

### **Positano Coast**

#### **by Aldo Lamberti\***

212 Walnut Street 2nd Floor  
215.238.0499  
positanocoast.net  
@positanocoastphilly

### **Race Street Cafe\***

208 Race Street  
215.627.6181  
racestreetcafe.net  
@racestreetcafe

### **Royal Boucherie\***

52 S 2nd Street  
267.606.6313  
royalboucherie.com  
@royalboucherie

---

Restaurants with \* offer a special promotion to Arden patrons.  
Please ask your server for details/scan the QR code for more details.

For complete restaurant descriptions visit: [ardentheatre.org/dining](http://ardentheatre.org/dining)

Dining Partners as of 9/1/2024





# Your support helps bring great stories to life

**Did you know?** Arden for All (AFA), our in-school arts residency, is approved for Pennsylvania's Educational Improvement Tax Credit (EITC) program.



**Designate your tax dollars towards bringing theatre to classrooms across Greater Philadelphia!**

## **Significant Tax Savings**

Receive a 90% PA state income tax credit and a 10% federal itemized charitable deduction.

## **Direct Impact on Education**

Directly support educational opportunities for students in need.

## **Simple Process**

The Arden has partnered with Friends of Education to make donating through EITC easy! Learn more at [pataxcredits.org](http://pataxcredits.org).

**Questions?** Please reach out to Jessica Abel at 215.922.8900 x 149 / [jabel@ardentheatre.org](mailto:jabel@ardentheatre.org).

## \$100,000 & above

Hamilton Family Charitable Trust  
Rosenthal Family Foundation  
Shubert Foundation  
William Penn Foundation  
Wyncote Foundation

## \$50,000 to \$99,999

Harold and Mimi Steinberg Charitable Trust  
Harmelin Media  
Independence Foundation  
PA Department of Community and Economic Development

## \$25,000 to \$49,999

Anne M. and Philip H. Glatfelter III Family Foundation  
Comcast Corporation  
The Horace W. Goldsmith Foundation  
PECO Energy

## \$10,000 to \$24,999

Anton Charitable Trust,  
In Memory of  
Frederick W. Anton III  
Arcadia Foundation  
Fox Chase Bank Charitable Fund  
The Sylvia W. and  
Randle M. Kauders Foundation  
Lincoln Financial Foundation  
National Endowment for the Arts  
Pennsylvania Council on the Arts  
Penguin Young Readers+  
Philadelphia Cultural Fund  
PNC Charitable Trust —  
Robert H. Reakirt Foundation  
The Suzanne Roberts Cultural  
Development Fund  
TD Charitable Foundation  
Truist  
Invest Financial  
Zeldin Family Foundation

## \$5,000 to \$9,999

Civic Foundation  
Cuba Libre+  
Ethel Sergeant Clark Smith Memorial Fund  
The Haley Foundation  
Janet Yaseen Foundation  
Philadelphia Activities Fund

## \$2,500 to \$4,999

Charlotte Cushman Foundation  
Christopher Ludwick Foundation  
Elliott-Lewis Corporation  
Franklin Fountain+  
Fringe Bar+  
Hassel Foundation  
Irene D. Cunningham Trust  
Las Bugambilias+  
The Lida Foundation  
The Paul E. Kelly Foundation  
The Plough and the Stars+  
Positano Coast by Aldo Lamberti+  
Republic Bank  
TCF- The Community's Foundation  
Virginia Brown Martin Fund of the Philadelphia Foundation

## \$1,000 to \$2,499

Alex J. Ettl Foundation  
Barnes & Noble+  
Bendita Foundation  
BeneServ  
Cafe Tolia+  
Dolfinger-McMahon Foundation  
Franklyn Rodgers Family Fund of the Philadelphia Foundation  
Forsythia+  
Global Atlantic Financial Group  
Growth Counsel LLC  
Hamilton Family Foundation  
Khyber Pass Pub+  
Christian R. and Mary F. Lindback Foundation  
National Mechanics+  
Race Street Cafe+  
Rittenhouse Foundation  
Royal Boucherie+  
Sun East Foundation

## Up to \$1,000

Actors' Equity Foundation  
Bryn Mawr Presbyterian Church Choir  
High Street Philadelphia+  
The Pew Center for Arts and Heritage  
The R. Andrew Swinney Presidential Achievement Fund of the Philadelphia Foundation  
Quaker Printing+  
Weavers Way Co-op+

## Employee Giving, Matching Gift, Donor Advised Fund Partners

American Online Giving Foundation  
AYCO Charitable Foundation  
Bank of America  
BillGO  
Bristol Myers Squibb  
Cadence Design Systems, Inc.  
Charities Aid Foundation of America  
The Chicago Community Foundation  
Chubb  
CIGNA Corporation  
Comcast Corporation  
Dun & Bradstreet  
Equitable / AXA Foundation  
Exelon Corporation  
Fidelity Charitable  
Friends of Education  
Give Lively Foundation  
GlaxoSmithKline  
General Atlantic  
Global Atlantic Charitable Gift Fund  
Goldman Sachs  
Google  
Impact Assets  
Independence Foundation  
Jewish Communal Fund  
Johnson & Johnson  
JP Morgan Chase & Company  
Macy's/ Bloomingdale's  
McKinsey & Company  
Microsoft  
Morgan Stanley  
Merck Foundation  
National Philanthropic Trust  
PayPal Giving Fund  
PECO  
Penn's Way  
The Philadelphia Foundation  
Pfizer  
The Pledgeling Foundation  
PSEG  
Radion Group, Inc.  
Renaissance Charitable Foundation  
Sap America, Inc.  
Schwab Charitable  
Susquehanna International Group, LLP  
T. Rowe Price  
Thrivent Charitable Impact & Investing  
United Way  
Vanguard Charitable  
William Penn Foundation

+ Denotes a gift of goods or services  
This list represents gifts made through October 1, 2024



The  
**Sylvan Society**  
Arden Theatre Company

*Grounding the Present, Nurturing the Future*

The Sylvan Society recognizes individuals who support the Arden's work by making annual gifts of \$1,000 or more.

The special generosity of our members enables the Arden to tell great stories by having the resources to achieve the highest level of artistic quality.

\*This list represents gifts made through October 1, 2024\*

### **Chestnut Grove**

**(\$25,000 and above)**

Lois G. Brodsky  
The CHG Charitable Trust  
Nancy and Bob Elfant  
Kate Groark-Shields  
Michael Grove  
Alta and N. Peter Hamilton  
Joanne and Jon Harmelin  
Jessica Phelan  
Monica and Philip Rosenthal  
Lee and Chris van de Velde  
June and Steve Wolfson

### **Sassafras Grove**

**(\$10,000 - \$24,999)**

Rayenne A. Chen  
Christina and David Fryman<sup>^</sup>  
Elizabeth Gemmill  
Terry and Ann Marie Horner  
Robert and Risa Lavizzo-Mourey<sup>^</sup>  
Peggy Morgan and Patty Bowman  
Charles Rose  
Bernard and Camille Rosenberg  
Hether and Don Smith  
Harvey B. Swedloff

### **Cherry Grove**

**(\$5,000 - \$9,999)**

Anonymous  
John R. Alchin and Hal Marryatt  
Richard and Kathleen Aregood  
Charles Arnao and Rosemary Watt<sup>^</sup>  
Anne Cook and Russ Troyer  
Ann E. Diebold  
Deb Dorsey and Mike Green  
Elisabeth Erlbaum  
Stephen Falchek and  
John Offidani III~  
Richard Harris  
Jim and Carolyn Hessinger  
Robin and Saifuddin Mama  
Alexis and Ed Pappas  
Tom Petro and Kris Messner

Ceth and Sam Plum  
Rosalyn K. Robinson and  
Warren B. English  
Sid and Ruth Rosenblatt  
Sharon and Irv Shapiro  
Rosalyn and Stephen Weinstein  
Nancy Brent Wingo  
Hope Yursa

### **Filbert Grove**

**(\$2,500-\$4,999)**

Brian Abernathy and Elizabeth Ireland  
Brett and Nan Altman  
John and Amy Bitman  
Bob and Cheryl Carfagno  
John Coleman and Diane Runyan  
John and Fern Culhane  
Joy De Jesús and James Reynolds  
Robert M. Dever  
Michael A. and Edward C. Donato  
Laura Drake  
Shannon and Ted Farmer  
Elizabeth Fernández-Viña~  
Jill Fisch and John Gassenheimer  
Linda and David Glickstein  
Jennifer Harmelin  
Eileen Heisman and Marty Tuzman  
Ed Hillis and Audrey Cohen  
Peter\* and Louise Kelly  
Kenneth Klothen and  
Eve Biskind Klothen  
William A. Loeb  
Janice Madden  
Michael Mallee  
Barb and Don Matheson  
Amy Murphy and Terry Nolen  
Joel and Bobbie Porter  
John and Claire Rodgers  
Marilyn and Hank Royfe  
Keith and Jim\* Straw

### **Mulberry Grove**

**(\$1,000-\$2,499)**

Anonymous (6)  
Hank Adamczyk and Iris Melendez  
Becky and John Adams  
Diane Alessi  
Stan and Lisa Altman  
Winifred Anderson and Eric Lien  
Stephen S. Arms and Jennifer J. Arms  
Bethany Asplundh  
Jim and Janet Averill  
Rhonda Ball  
Sheryl and Allen Bar  
Sheila Bell  
Jay and Nancy Berkowitz  
Linda and Mark Bernstein  
Bill and Brenda Bertrand~  
Sandy and David Beswick  
Ian and Ryane Nicole Beutler  
Dr. Regina Blaszczyk and Lee O'Neill  
Louis Bluver  
Viola W. Bostic  
DeDe and Tony Brown  
Ann and David Brownlee  
Vicki and Russ Carlson  
Karl Carter  
Christopher and Jeffrey Carver  
Cordelia Clement  
Barbara Cobb  
Marc and Margie Cohen  
Kelly Colarelli<sup>^</sup>  
The Susan Lavine Coleman  
Charitable Fund  
Gregory L. Coleman  
Rebecca Davis and Mark Hoffman  
Ellen Deacon~  
Tobey and Mark Dichter  
Carol Eicher  
Jonathan and Nancy Ellsworth  
Lisa Fair and Bryce Quayle  
Paul and Judy Farber  
Mr. and Mrs. Farenback-Brateman  
Donna and Norman Faye  
Jeanne B. Fisher and Robert F. Lang



# Sylvan Society cont...

Carole M. Foley  
Dieter and Sara W. Forster  
Ellen and Tim Foster  
Sandi Foxx-Jones  
Lou and Rhoda Fryman  
Julie and Tom Gennaro  
Terry Graboyes  
Kelly Grattan and John Lopez~  
William and Joan Greenfield  
The H and R Feinberg  
Family Foundation  
David C. and MaryJane Hackney  
Ann and Glenn Haig  
Anne Halkedis^  
Ellen and Steve Harris  
Hon. Lillian Harris Ransom  
Dr. Valerie Harrison  
Don and Lynn Haskin  
Janis Hawes and Patrick Cunningham  
Charles W. Head Jr. and  
John A. Faggotti  
Heidi Hertfelder^  
Steve\* and Jane Heumann  
Karen and Mark Hite  
Deborah Hluchan  
Phyllis Hochberg and Stuartz Katz  
Diane Hofer  
Jill Hyman Kaplan and Elliot Kaplan  
Rachelle and Ron Kaiserman  
Margie and Scott Kasner  
Holly Kinser  
Carol Kelley  
Steven Klein  
Peter J. and Sandra Klugman  
Steven Knepper  
Thomas and Anne Kohn  
Bernadette Koller  
Valerie Koscelnik  
Marilyn and David Kraut, In Honor  
Of Amy Murphy and Terry Nolen

Deborah R. Kravetz and Bill Robling  
Cyana La Divertida  
Mr. Robert Leventhal and  
Ms. Cheryl Getty  
Michael MacFarland  
Richard Maimon and Susan Segal  
Lee Marks and Lisl Zach  
Linda McAleer  
John and Amy McCawley^  
Peter and Laura McQuaid, In Honor  
Of the amazing Arden Theatre Team  
A.C. Missias  
Chloe and Eric Mohr  
Leslie and Michael Molder  
Adam Mussell and Kate Whittington  
Marge Neff and Dan Winterstein  
Kathleen Nelson and John Kromer  
Arnold and Shelley New  
Mary Ivy and Roger Noone  
Michael Norris and Matt Varrato  
Susan Odessey  
Barbara Oldenhoff  
Robert Overell and Lisa Glasser  
Don and Barbara Parman  
Ronald and Pam Pontano  
Laura and Douglas Pratt  
David Pressel and Jill Feldman  
Daniel Promislo  
Ms. Aneira Puttaswamy  
Rachel and Robert Reilly  
Alan Reinach and Dana Perlman  
Alice Reyes  
Joy Rickabaugh  
E. Graham and Elizabeth Robb,  
In Honor Of Lee van de Velde  
Franklyn and Cintra Rodgers  
Jane A. Rose, CPA/PFS  
Mike Salmanson and Tobi Zemsky  
Gisèle Sambar Bathish  
Becky Sassi

Geoff Schmidt and Marie Wong  
Kim and Ross Schmucki  
Ellen Schwartz and Jeremy Siegel  
Terri Schwomeyer  
Kathy Sernak  
Genvieve and Clete Shields~  
Roy and Lee Shubert  
Laura and Ron Siena  
Paulette Singleton  
Gayle and David Smith  
Kathy and Don Smith  
Valerie Smith^  
The Spector Charitable Trust  
Rudy Sprinkle and Andrea Barsevick  
Mike and Shannon Stellato~  
Kathleen A. Stephenson  
Robert and Sydney Stevens  
William K. Stewart, Sr. Foundation  
Eric Tamulonis and Deirdre Gibson  
Stephen and Kathy Thompson  
April J. Tvarok, In Honor Of Class 9  
Jason Vail  
Thomas and Dawn Weiss^  
Allison Weissman,  
In Honor Of Bebe Maritsis  
Caitlin Wood and  
Martha Schoolman~  
Richard and Diane Woosnam  
Ellen Yin+  
Beth Zatuchni and Jerry Satlow~  
Tom and Jackie Zemaitis

\* Denotes a deceased supporter  
+ Denotes a gift of goods or services  
^ Includes a matching gift  
~Includes a monthly gift

This list represents gifts made through  
October 1, 2024

## THE LEGACY SOCIETY

Arden Theatre Company would like to recognize the following supporters who have included the Arden in their wills or estate plans. Their planned gift provides support which will help sustain the Arden's work for decades to come.

Anonymous  
Ms. Peggy Anderson\*  
Stanley Baurys\*  
Ivy Bayard\*  
Jane Berryman  
Louis Bluver  
Mary P. Burr  
Pearl M. Carpel\*  
Larry S. Friedman\* and  
Dean H. Rishel  
Ellis Ginsberg\*

Peter Gistelinc and Kim Bloom  
Grace Goglewski and  
Eric Schoefer  
Gary R. Grob\*  
Kelly Grattan and John Lopez  
David C. and Mary Jane Hackney  
Jim and Carolyn Hessinger  
Suzanne and James Hill  
Alan and Nancy Hirsig\*  
Mary Ellen Krober

DawnLynne Kacer and Family  
William Loeb  
Donald Martin and Richard Repetto\*  
Peggy Morgan  
Tom Petro and Kris Messner  
Kristen Phillips and Matt Schreck  
Renee E. Polsky\*  
Madeline Portnoy  
Irene M. Reiter\*  
Dr. Harry Rosenthal  
Marilyn and Dean Staats

We hope you will consider including the Arden in your will or estate plans. To be recognized as a member of the Legacy Society or with questions regarding planned giving, please contact Jessica Abel, Director of Development, at 215.922.8900 x149.



# ARDEN DRAMA SCHOOL WINTER 2025

REGISTRATION BEGINS  
IN NOVEMBER

LEARN MORE  
[ardendramaschool.com](http://ardendramaschool.com)  
215.922.112  
or Scan the QR



CLASSES BEGIN  
JANUARY 11



Theatre classes for kids and teens

# Thank You to Our Supporters

## \$500-\$999

Anonymous  
Jerry Abelson and June Idzal  
Sally and Michael Bailin  
Eddy and Myra Bell  
Ms. Reid Bodek~  
Carol and Allen Bonner  
Beth Burrell and David Sorensen  
Karen Cheney  
Carol Cook  
Warren D. and Kaye L. Crown  
Kathy Duffy  
W. Wallace and Joanne Dyer  
Jonathan V. Edmondson^  
Epstein Family Charitable Trust  
John Erickson and Harry Zaleznik  
Paula Fuchsberg  
Dan Gannon  
Janet-Lynn Garrabrant  
Joseph and Jane Goldblum  
Tanya Gordon  
Ben and Jody Graff  
Paul D. Green  
Patricia Haney  
Rhoda Harrison  
James Hinrichs  
Diane L. Hlywiak, Esquire  
Glenn Holsten  
Jane Kamp and Thomas Lloyd  
Janice King  
Holly and John Kleimo  
Catherine Klinger Klutcher  
Sarah Kloss  
Jane S. Kramer  
Mary Ellen Krober  
Ruth and Peter Laibson  
David Lerman and Shelley Wallock  
John and Melissa Lore  
John and Martha Lubell  
Mary Ellen Marzullo  
Brendan May and  
Mary Kate McGrath-May  
Michael McArdle  
Barbara McCleary  
Kathy McMaster  
Julie Meighan+  
Vicki Meitus  
Susan and Alan Miller  
Joann Mitchell  
Sandra S. Mock  
Jackie Morrill and Mike Donahue  
Shannon Mullican and  
Kurt Schillinger  
The Norman Family  
Mr. Joe Norton  
Sue and Tom O'Donnell  
Shellie Peters  
Claire and Lud Pisapia  
Janet and John Poth  
Paul Rabe and Cheryl Gunter  
Susan and Steve Reisbord  
Kurt and Mary-Ann Reiss

Rachel R. Reynolds  
Robin Rifkin and Michael Silverman  
Daniel and Faye Ross,  
The Ross Family Foundation  
Dan Rothermel and  
Michael Hairston  
Mauricio Saavedra and  
Joanna Sykes-Saavedra  
Larry and Carol Segal, In Honor Of  
Susan Segal's Birthday  
Joseph Shaffer^  
Polly Shaffer  
Thomas Sherman and  
Nancy Middlebrook  
Stanton and SaraKay Smullens  
Barbara and Robert Stewart  
Susan and Jim Strohman  
Bruce and Nancy Urbschat~  
Lewis and Hella Volgenau  
Donna and Andrew Wechsler  
Diana Zalewski and Edward Fink^

## \$250-\$499

Stuart M. Adair~  
Anthony Agati  
Janet Alwang  
Marilyn and John Anthony  
Bree Archambault  
Sandra Axelrod  
Sylva Baker  
Cynthia and George Barth  
Wilma Bass  
Ellen Baxter and Robert Kavash  
Carol Beam  
Patricia G. Beck  
Thomas Bender  
Gretchen Bender  
Mr. David Berch  
Sara and Bruce Berger  
Timothy Berger and Sarah Mooers  
Ruth Berman  
Charlotte H. Biddle  
Fern and Bob Billet  
Barbara Bisgaier  
Linda and Alden Blyth  
Janice Bogen  
Miriam Bowerman  
Alice Bronstein  
Dr. Stephen Bulova and  
Eleanor W. Bulova  
Ms. Monika Burke  
Sabra Cameron  
Chip Capelli,  
In Honor Of Amy Murphy  
Arlene Cessna  
George and Barbara Chalmers  
Leah Chaplin and Eileen Gildea  
Edward Chiginsky  
Annemarie F. Clarke and  
David L. Buch  
Diane and Patrick Close  
Deborah Co

Mark Cohen and Marty Johnson  
Mary Coleman  
Janet and Richard Conn  
Janet Cook  
Susan Cook and Jeff Staikoff  
Betty Cooper  
Carol Copland  
Mary Jo Courey  
Jill, Hank and Katie Croft  
Hillary and Gene Curran  
Cynthia D'Ambrosio  
Paul Danifo  
Nancy DeLucia  
Marla and Andrew Diamond  
William Diebold and  
Deborah Freedberg  
Robert Dinardo  
Stuart and Diana Donaldson  
Angela D'Orsi and Dean Beer  
Barrie duBois  
Jeff and Michelle Eichen  
Sally and Stewart Eisenberg  
Anne Ewers  
William and Anne Ewing\*  
Norma A. Fabian  
Antoinette Farrar Seymour  
Cheryl and Steven Feil  
Mark and Rene Feitelson  
Victoria Ferguson  
Jay Finestone and Randy Jill Schwartz  
Victoria Ferguson  
John and Nancy Fischer  
Jacqueline Foldesy  
Kimberly Foster^  
Allan P. Freedman and  
Amy Rappaport  
Paul Friedman  
Tong Ming-Fu  
Brenda Furtak  
Bernadette Gallagher  
JJ Garcia and Charlie Dreisbach^  
Jesus Garcia  
Joel R. Gardner and Holly A. Phelps  
George and Dona Garrettson  
Janet Ginzberg and John Caskey  
Rena and Henry Goehl  
Ilse Goldfarb  
Jay Goldstein  
Joyce Goodman  
Eileen and Norman Gray  
Rita Greenfield  
Trudy and Paull Guterman  
Marlane and Harvey Guttmann  
Henry and Joyce Halpern  
Caroline Harries  
Carol Hauptfuhrer  
Dan and Monica Hilferty  
Terry Hirshorn  
Leonard and Audrey Hoffman  
Michael J. Hozik and Margaret L. Rea  
Jim Hutchison and Nanci Ritter  
Dave F. Huting



# Thank You to Our Supporters

Meghan Ignatosky^  
Jennifer Jenkins  
William Jordan\*  
Kenneth Foster and Mary Jenkins  
DL Kacer  
Philip\* and Marge Kalodner  
Phyllis Kauffman  
Douglas and Ruth Keating  
Susan Kellogg and Dick Hoffman  
Michael and Marie Kenis  
Kate Kidder  
Stephen Kieran  
Megan Kiesel  
Paul R. Kleschick III  
David Knowlton and Diane Zompa  
Ellen Kurtz  
Joyce Laskin  
Andrew and Lynn Lees  
Drs. Bob and Joyce Leonetti  
Ruth Lesser  
Anna Levinger and  
Bree Lowdermilk  
Natalie Levkovich  
Edward Lundy and Debra Reiff  
Cirel and Howard\* Magen  
Kathleen Mahan  
Ruth Mandelbaum  
Murray Margolit

Michelle McFarlane  
Jeffrey Minehart  
Eric Moss  
The Kathleen J. Moyer  
Charitable Fund  
Paul Nutaitis and Robert Clark  
Deb Olley and Brian T. Murphy,  
In Honor Of Deb Dorsey  
and Mike Green  
Tim O'Malley  
Linda Osler  
Fred Ott  
Robert Ourach  
Kimberly C. Oxholm and  
Carl Oxholm III  
Mr. Larry Pace  
Michael and Judy Paul  
Ms. Doris Peltzman  
David and Amy Pollack  
Sandy Portnoy  
Ilene and Coleman Poses  
Nick and Peg Potalivo  
Gail and Jerry Raznov  
Eleanor and Joseph Reinhardt  
Mr. and Mrs. William H. Rivers Jr.  
Edward and GERALYN Rock  
Robert L. Roessler  
Maxine Romano

Shelley Rosenberg  
Sue and Hal Rosenthal  
Anthony Rostain  
Adelle Rubin  
Amy and Mitch Russell  
Suzanne Ryan  
Suzanne and Kip Salus  
Marilyn Sanborne and  
Richard J. Labowskie  
Rita Schaar  
Nancy Scharff  
Karen Schermerhorn and  
Evan Seymour  
Carl W. Schneider  
Perlita and Frank Schorfheide  
Bonnie Schorske  
Jackie Schroder  
Lauren and Daniel Schwartz  
Lawrence and Carol Segal,  
In Honor Of Richard  
Dan and Hanna Shapira  
Elaine Sherman  
Jim and Cathy Shippen  
Diane Silverhardt  
Amanda Spann^  
Virginia Spykerman  
Emily Steiner  
Elsie Stern and Steve Cohen

## Become a MONTHLY DONOR

to help sustain our daily work  
throughout the year!

This consistent support provides core financial stability to help keep the lights on, employ local theatre professionals, and reach even more students throughout the Greater Philadelphia area.

**Becoming a monthly donor is the easiest way to increase your impact!** Simply tell us how much you would like to donate monthly in the link below and we'll take care of the rest. A recurring donation of any amount helps:

**Scan to donate:**

[ardentheatre.org/donate](http://ardentheatre.org/donate)



**\$10  
a month**

keeps the lights on  
during a full day of  
performances.



# Thank You to Our Supporters

Rita and Neil Stevens  
Elan Strominger  
Edward and MaryAnn Tierney  
Matthew Tom  
Adrienne Topic  
Margaret Evans Tuten  
Bryan Ulishney^  
Richard Urbani  
Carol and Paul Vahlstrom  
Judith Voet  
Mark Wade  
David Warshal  
Marlene Weinberg  
Vivian Weinblatt  
Abigail Wolf and Jonathan Weiss  
Judith L. Wellington  
Caroline West  
Doris A. Williams  
Jim and Jean Wilson  
Linda Witt  
Linda Wood  
Sue and Eric Woolf

## **\$125-\$249**

Anonymous (8)  
Judy Aaron  
Rhoda Abrams  
Lawrence and Patricia Abramson  
Thomas Achenback  
Eleanor Adam  
Barbara Adams, In Honor Of  
Susan Segal's Birthday  
Estelle Alexander  
Michael Allen  
Jenys Allende  
Virginia Alpaugh~  
Helene Amster  
Melba Axelrod  
Camille Bacon-Smith  
Nelson Bagby  
Esther Balkin  
Theresa Bambino  
Charlene and Keith Bance  
Cecily Banks  
Theresa Baraldi  
Judy Barbush\*  
Ronald Barras  
Robert and Sandy Clay Bauer  
Fred Baurer  
Susan Becker and Aaron Rubin  
Amy Brantz and Edward Bedrick  
Jennifer Bell  
Sue Bentson  
Claire and Joseph Berger  
Donald and Sheryl Berger  
Marcie and Robert Berke  
Frank Bernard  
Sandy Betner  
Barry and Marilyn Bevacqua  
Bill Bissell, In Honor Of  
Arden Theatre Box Office Staff  
Barbara Black

We are proud to support

## *Arden Theatre Company*

**HARMELIN**MEDIA

More than forty years of  
transforming advertising.

More than forty years of  
supporting the arts.

[harmelin.com](http://harmelin.com)

Mr. and Mrs. Larry and Joyce Bloom  
Nathan Blum and Barbara Rolnick  
F. William Bogle  
Ernest Bollin  
Elizabeth Bond  
Gwen Borowsky  
Nicholas Bosshardt  
Helen Boyle  
Michael P. Boyle  
Lorena Broesamle  
Barbara Bromfield  
Katherine Brown  
Sarah Campbell  
Vincent Cancro and  
Donna Davenport  
Chester Allen Carson  
KC Casey  
Avigail Caspi Lebovic  
Caroline M. Castagno  
Margaret and Phillip Cavanaugh  
Anne Chain  
Kamesh Challuri  
Maureen Charnitski  
Mr. Joseph Chaya

Barbara Citerone  
Tawny Clark  
Mary Cochetti  
Gert Cohen  
Howard Cohen  
Everod Coleman  
Michael Coleman  
Rick and Carol Collier  
Kristina Collins  
Gina Collier  
Janet Connor Love  
Donna Cordner and Brent Groce  
Gladys Corrodi  
Barbara Cortese  
Joan Countryman  
Michael and Nancy Crawford  
Alexander Curtin  
Joseph and Helen D'Angelo  
Todd and Christine Darr  
Anne Davenport  
Katherine Davies  
Bill Davis and Lisa Handler  
Emily L. Davis  
Nancy and Ken Davis

# Thank You to Our Supporters

Robert and Bonnie DeAngelo  
Francis de Regnaucourt  
Emilia Demarco  
Teri Dicesare  
Rhonda Dickey  
\*George F. Koch, Jr. and  
Santo A. DiDonato  
Susan Dinan  
Jeanne Doherty  
John Doherty  
Joseph and Virginia Dominic  
Joanne Donahue  
Lucille Schlack Drake  
Judith Drasin  
Laura Duffy  
George Dvorak  
Robert Earle^  
Michael Edelman  
Anne Egan  
Linda Ellsworth  
Carole Epstein  
Edmund and Judy Erde  
Ted and JoAnn Erfer  
Morgan Everitt  
Adelaide Ferguson and Ron Cahan  
George Feuer  
Gene Fiducia  
Diane and John Fitch^  
Judy Flander  
Judy and Hal Fliegelman

Donald Foote  
Alan Freed  
Elyce Freedman  
Paulette Freeman  
Brenda Freitag and Chet Tuthill  
Douglas Frenkel and  
Marlene Weinstein  
Maryanne Noel and Philip Friedman  
Phil and Carol Fuoco  
Suzanne Gallagher  
Ray Didinger  
Miriam Galster  
Ofelia Garcia  
Susan Gasteyer  
Greg Gephart  
Scott and Lynda Glading  
Joan D. Gmitter  
Dick Goldberg  
Daphne Goldman  
Diane and Frederic Graboyes  
Marianne and Donald Green  
Adele Aron Greenspun  
Rick Greenstein and Claudia Tesoro  
Celeste Griffith  
David and Myra Gutin  
Joanne Halscheid  
David and Janice Haman  
Elizabeth Harman  
June Hament  
Tahirah Harrigan

Beverly Hayden  
Elizabeth Heller-Mesznik  
Susan Herron  
Les and Mary Heselton  
Wendy and Steve Hess  
John and Marcia Hiehle  
Thelma Hilibrand  
Margaret Hill  
Richard and Barbara Hirsh  
Maryll and William Hitchings  
Johnnie Hobbs  
Alexa Hogarty  
Robert Holland  
Esther and Robert Hornik  
Edward Hoy  
Geraldyn Humphrey  
Jill Huntley Taylor  
Thomas Hurster and  
Jacqueline Salmon  
Dave Ingram  
Peter and Nora Hunt-Johnson  
Maurice Johnson  
Jeanette Johnson  
Bruce Joss  
Glenn Kalina  
Barbara and Leslie\* Kaplan  
Karen Kaplan^  
Anne Kasprinski  
Steven Kavanaugh  
Colleen Keith



123 Chestnut Street

Entrance on 2nd

Philadelphia

[WWW.PLOUGHSTARS.COM](http://WWW.PLOUGHSTARS.COM)

*The Plough & The Stars*

**Before or After the Show**

**Arden guests receive**

**10% off their meal!**



# Thank You to Our Supporters

Brian Kennedy  
Cindy Kesselman  
Julia Kharlip, In Honor of  
    *The Lehman Trilogy* Production  
Rachel Kipnes  
Cheryl and John Kirby  
Laura Kirby  
Brian and Caren Kirschner  
Charles Klaniacki  
David Klein  
Ken, Eva, and Aaron Klein  
Susan Kleinman  
Lora Kline  
Jerry and Deena Koffler  
Michele and John Koskinen  
Gregory Koutnik  
Christine and Matt Kozsuch  
Vicki and Don Kramer  
Richard G. Krassen  
Louis Krause  
Maureen Krueger  
Denise A. Kuhn  
Barry and Janet Kushner  
Roman and Melaku Lakew  
Medita Laville  
William Lederer  
GeorgeAnn T. Lenard  
Susan Levin  
Darlene Levin  
Ely and Sarah Beth Levine  
Arlene Liebman  
Norman and Sylvia Lieberman  
Mary Lee and Bill Lieser  
Lisa Linder and Richard Grossman  
Victoria Lipoff  
Laurel and Robert Lipshutz  
Brian Litt  
Audrey Litto  
Kathryn Loitz  
Jacqueline Loli  
Greg Lord  
Howard R. and Jennifer Lurie  
Susan and James Lytle  
Richard and Scotia MacRae  
Theresa Mader and David Suter  
Dan Maier  
Miriam Mandell  
Joseph M. Manko  
The Mantione Family  
Moshe Margolin  
Barbara J. Marshall, In Honor Of  
    Barbara Marshall  
Deb Martin  
Sharmain Matlock-Turner  
Ken and Margery Maurer  
George and Judy McCarthy  
William McCauley  
Patricia McCole  
John McCormick and Ken Schmitt

Alice McCreary and David Epler  
Gavin McCullion  
Dagmar McGill  
Kathleen McGrann  
Virginia McIntosh  
Louise McLeod  
Becky McMahon  
Lorraine and Bruce McMahon  
Arthur and Sallie Melvin  
Adrienne Mendell  
Allyson Mercer  
Mary and Robert Metrione  
Cheryl and Gerald Meyer  
Barbara Miller  
Frances Miller  
Sandra and Martin Miller  
Michael Milone  
Dale Mitchell  
Mary Fran Moeller  
Jen and Jonathan Molod  
Florence Mompalaisir  
Valerie Mond and Ed Nowak  
Gina Moore  
Calibous Moskowitz  
Mary Mullarkey  
Sandra Murray  
Ken and Sue Myers  
Stephanie Naidoff  
Ann Marie Nasuti  
Marissa Neale  
Heather Neff  
Helen Newbold  
Claiborne Newlin  
Karen Nice  
Etta and Charles Nissman  
Frances Novack  
William Norton  
David and Monda Noyes  
Alan Oberman  
Judith O'Dell  
Grace O'Dowd  
Nora O'Dowd  
Patricia Ogiony  
Jim Ortega  
Abbey Owens  
James Pabarue  
Susan Lee  
Alan and Bryna Paston  
Teresa Peterson  
Kristen Phillips and Matt Schreck  
Deborah Pines and Carl Perchonock  
Martha Platt and Marlis Kraft  
Lois and Paul Plotnick  
Alma Plummer Marshall  
Jeffrey and Elizabeth Podraza  
Theodore Politis  
Victoria Pratt  
Dr. Tom and Candace Pratt  
Antoinette Pressman

Ruth Prushan  
Joel Quast  
Pamela Quinn  
Mark and Karen Reber  
Stanley and Rita Reichlin  
Mary Jo Reilly  
Susan and Steve Reisbord  
Judith Richter  
Barbara Rice  
Gary and Robin Rislser  
Marjorie Risman  
Cathy Robinson  
Mrs. Deborah Robinson  
Renee Rollin  
Lou and Laura Romano  
Tracy Romans  
Carey and Robert Roseman~  
Richard and Anne Rosenberg  
Edwin and Sally Rosenthal  
Libby Rosof and Murray Dubin  
Richard Ross  
Diane Rossheim  
Barbara Rubel  
James Rush  
William Russell  
E. Ruth Sachs  
Bill and Joan Saidel  
Sandra Sborofsky  
Barbara Schaffer  
Les Schlessinger  
Carolyn Seplow and Adam Bailine  
Marvel Shmiefsky  
Jill and Kerry Schuman  
Mark and Nancy Schure  
Evelyn and Harold Schwartz  
Elena Selina  
Hermene Shapiro  
Irving Shapiro  
Stacie Shepard  
Iris Shiftan  
William Shoff  
Mel and Susanne Shuster  
Paul Siegel  
Marilyn Sifford and Robert Butera  
Robert and Harriet Singer  
Rebecca Sinkler  
Arnold Skolnick  
Helen Smeltzer  
Harriet Smith  
George R. Smith  
Walter Sobon  
Jeffrey Sorkin~  
Patrick Sorrells  
Rudy Spraycar  
Marilyn and Dean\* Staats  
Megan Staples Jacob, In Honor Of  
    Amy Murphy  
Michael Stelle  
Margaret Stein

To join the *Sylvan Society* or for more information on how you can support the Arden, please contact Orelí Uzdavinis, Manager of Individual Giving, at 215.922.8900 x131 or [ouzdavinis@ardentheatre.org](mailto:ouzdavinis@ardentheatre.org)

# Thank You to Our Supporters

Steven Stern  
Sarah Stitzer  
Catherine Stock  
Gaynor Strickler,  
    In Honor Of Anne Cook  
Daniel Szyld and Kathleen Ross  
Dr. Dolores Szymanski  
Linda R. Tabas  
Kenneth Tartof  
Sylvia and Frank Tarzanin  
Maxwell Thoeni  
William Thomas  
Thomas Thompson  
The Tobias Family  
Gina Tomkowich  
Elizabeth Townsend  
Marian Tracey  
Linda Traver  
Jane Trentacoste  
John Urofsky  
Darrell Velegol  
Tom and Patricia Vernon  
Alec Vidal  
Lorine Vogt  
Deborah Volkmer  
Sandra Vondeling  
Ann Walker  
Patrick and Kathleen Walsh  
Bo Wang  
Tom and Beth Warms  
Ellen Wasserson  
Melinda Watts  
Linda Waxler  
Shelly and Fred Weiner  
Renee Weisband  
Bebe Weiss  
Lenore Weissberg  
Rashida Wellbeck  
Suzanne L. Weston  
Anne Wittkamp  
Leon and Phyllis Wolf  
Hon Wong  
Robert Woodcock and  
    Sally Leiderman  
Jodie Yanno  
Barbara Yorke  
Dina Zimbardi  
Pamela Zitta  
Heidi Zod

## **\$75-\$124**

Anonymous (7)  
Anonymous, in Honor Of  
    Betsy Oliphant Ross (2)  
Lawrence Abel  
Eileen Abel  
Carole Abercauph  
Diane Ajl  
Hilary Alger  
Peter Allen  
Barbara Amstutz  
K. Anderson

M. Faith Angell  
Jay Anstee  
Patricia A. Armitage  
Nancy Atchison  
Rosalie August  
Dr. Rita Axelrod  
The Babilonia Prunés Family  
Cecil Baker  
Pam and Earl Ball  
Rebecca Baranowski  
Janine Barbara  
William Barcklow  
Marlene Bareiss  
Joseph Bartman  
Carolyn and George Bassett  
Terry Bayer, In Honor Of  
    Jackson and Gavin, our Grandsons  
Oksana Baydina  
Frances and Michael Baylson  
Richard and Eileen Bazelon  
Jim Becker  
David Behrend  
Michele Bennett  
Livia Berardi  
Irene Berkowitz  
Connie and Dick Berman  
Estelle Blaustein  
Amy Bleakley  
Jocelyn Block  
Thomas Boghosian  
Linda and Andy Borson  
Iris Boshes  
Marcia Bower  
Amy Bowers  
Hazel Bowers  
Cynthia Boyd  
Erin Boyle  
Brian Boyle  
Virginia Brabender  
Stanton and Jill Braid  
Karen Bramblett  
Joseph and Mary Lou Breidenstine  
Terrence Brennan  
Jennette Brian  
Julianne Brienza  
Eadie and Allan\* Brooks  
Kathleen Brooks  
Ted and Susan Broom  
Robert Brophy  
Doris Broudy  
Patricia C. Brown  
Elijah Brown  
Cathy and John Bryck  
Michael P. Buckley and Mason Barnett  
Joanne Burak  
Nora Burrigide  
Peter and Miriam Buswasser  
Dorothy E. Byrne  
Francis and Mary Calter  
Virginia\* and Samuel Cameron  
Anthony and Jaque Camp  
Andrea Caniglia

Carolyn Cannuscio and Daniel Rader  
Stephen Capadona  
Larry Carlin  
Lise and Dick Carr  
Mr. Keith Case  
Joseph Casey^  
Debbie and Allan Casnoff  
Lillian and William Cassel  
John Cella  
Stuart Charme  
Kathy Chase  
Janet Cherry  
Ed Chew  
Susan Chisholm  
Emily Cieri  
Ivor Clark  
Karen Clark  
Tom Clark  
Helene Cohen  
Judy Cohen  
Beth Cohen  
Jacquelyn Cohen  
John Collett  
Barbara Collier  
Peggy Conver  
John Cooke  
Dr. Cynthia Cooke  
Sarah Cooper Searight  
Elizabeth Cornman  
B. Karen Coyne  
George Craig  
Heather Crane  
Sarah Crawford  
Kortney Cruz  
Marie Cruz  
Veronica Cuccinotta  
Barbara and David Curtin  
John Dale  
Ms. Dorothy Dalton  
Barbara A. Daneluzzi  
Cheryl Dannenbrent  
Benjamin D'Annibal  
Beth Darrow  
Gilbert Davis  
Susan Davis  
Thomas and Eileen Davis  
Ms. Elizabeth Deegan  
Paul Deigendesch  
Catherine Del Duca  
Cordelia and Don Delson  
Michelle R. Denburg  
Nancy and Nishan Dersimonian,  
    In Honor Of Clayton Tejada and  
    Arden Front of House Team  
Kathleen Detreux  
Judy Dinn  
Alan and Fran Domers  
David Donaldson  
Frank and Sara Donnelly  
Bill Dooley  
Rosanna Dorazio  
Alexander Dragovich

# Thank You to Our Supporters

Daniel Drexler  
Robert and Renee Dubin  
Carol Dudnick  
John Dulik and Sandra Folzer  
Marian Duncombe  
Alice Dungan  
Faith Edelman  
Richard Egan  
Larry Eichel  
Susan Ellenberg  
Selma Ellis  
Jason and Jennifer Ellsworth-Aults^  
Dr. Beverly Emanuel  
Linda Emerick  
Karen Ernst  
Alan Ettenson  
Dorothy Evensen  
Sonja and Thomas Eveslage  
Susan Extein and Lucy Hyatt  
Anne and Steven Fassler  
Lona Farr and David Voellinger  
Cari Feiler Bender and Rodd Bender  
Winifred Fessenbecker  
Jeff Filipkowski  
Jill Fink  
Leila Finkelstein  
Cindy Fishman^  
Pamela Fisk  
Sarah Flook, In Honor of  
    Betsy Oliphant Ross  
Tamara Forstater  
Kathleen Foster  
Abbe Fox  
Irene Frangatos  
John and Elaine Frank  
Alexandra Frank  
Ms. Judy Frank  
Allyson J. Frank  
Diane Frankel  
Susan and Paul Frederic  
Barbara Freed and Alan Mittelman  
Rebecca Freedman  
Fran Freedman and Job Blum  
Paulette Freeman  
Martha Friedman  
Martin Friedman  
Marie Fritzingler  
Abraham Gafni  
Dr. Stephen and Ardith Garland  
Lisa Gates  
Jenna Gavaletz  
Charles Gear and Anna Lee Morgan  
Marguerite Geiger  
Mary Geisz and Keith Pryor  
Coeli Genter  
Eric Gerstel  
Gwen and Alvin Gilens  
Marylouise Gladish  
Philip and Karen Glick

Ms. Etta Glickman  
Marion Goldberg and Paul Keller  
Brian Goldsmith  
Heather Golin  
Jacqueline Gonatas  
Bob and Jan Goren  
Marie Gottschalk  
Rick and Sharon Graham  
Phillip Graneto  
Joshua Grant  
Victoria and Duncan Grant  
Donna Grasson  
Ellen Greco  
Alan and Sara-Ellen Greenberg  
Jonathan Greene  
Kaitlin Gregory  
Adam Gress  
Stephen Griffey and  
    Melinda McGough  
Frances Grubb  
Joanne Guarnieri  
Dan Gutierrez  
Mr. Mark Haas  
Bobbie Halpern  
Teresa Hanssens  
Mary Kate Harkins  
Jessica Harms  
Barbara Harris  
Russell Harris  
Shelley Harris  
The Harris Ketterer Family  
Carol Harrison  
Palmer and Judith Hartl  
Libby Harwitz and  
    Burton Blender  
Susan Havens-Lang  
Jenn Hayden  
Kenneth Heiings  
Patrice Heller  
Irene Hempstead  
Stuart Henderson  
Karen Hennes  
Angela and Michael Hennessey  
Don Henry  
Abe Henry  
Trudi and Irv Herman  
Dr. William Herring and  
    Mrs. Patricia Herring  
Leigh Ann Hewston  
Kirsten Hickerson  
Barbara Hilgen  
Mershon Hinkel  
Mrs. Elizabeth Hollinger  
Hollie and James Holt  
Dr. David O. and Patricia Holtz  
Marie Horchler  
Dr. Mindy and Jay Horrow  
Caren and Stuart Hosansky  
Chris Hoyler and Bob Jackson

Lynda Hubbell  
Michelle Hudson  
Kevin Hunt  
Ellen Huyett  
Evelyn Rosen  
David and Sylvia Jacobs  
Greg Jaffe  
Dr. and Mrs. William Jantsch  
Rebecca Jarosh  
Stacey Jarrell  
Rosemary and Ejner Jensen  
Leah Johnson and Damien Suqarrell  
Daniel Johnson  
Phyllis Jones  
Warren Joseph  
Edward Kahn  
Lisa Kahn  
James Kaib  
Ellen Kaplan  
Patricia Kapur  
Dr. Rhonda Karp  
Judy Kastenberg  
Mimsye Katz  
Lucy Kaufman and Matt Lockwood  
Jennifer Kay  
Joyce Kay  
Chris and Bridget Kelleher^  
Frances and Paul Kende  
Megan Kennard  
Barbara Kessler  
Toni and Herbert Kestenbaum  
Robert and Susan Kettell  
Christina Kind  
Jay and Bebe Kivitz  
Marlena Kleit  
Rita Klinger  
Veronica and Gary Klocek  
Margaret Klock  
Barbara Klock  
Lorraine Kobeski  
Theodore and Amy Kokas  
Ellen Kopeland  
Judith Kornfeld  
Alysa Krain  
Nassya Kralevska-Owens  
Shira Kramer  
Dr. Hillary Kruger  
Will Kumpas  
Christopher Kurtz  
Alan Kutner  
Daniel Lai  
Andy Lamas and Ginny Vanderslice  
Lois Landis  
John Landreau and Sherri Grasmuck  
Joan Lapayowker  
Melanie LaPenta  
Sigrid Larson  
Martin and Hannah Laufe  
Alexandria Leitao

**Look around. Want to reach this audience? Advertise in our upcoming stagebill.**

For more information on custom packages, please contact Michel at [mmazno@manzomediagroup.com](mailto:mmazno@manzomediagroup.com)  
or Kim at [krichards@manzomediagroup.com](mailto:krichards@manzomediagroup.com)

# Thank You to Our Supporters

Joe Leonard  
Maria Lerman  
Howard and Susan Levinson  
Michael L. Levitan  
Rafael Levites  
Madeline Levy  
Bella Lewensohn Schafer  
Joanne Lewis  
Missy Lide, In Honor Of  
    Betsy Oliphant Ross  
Wendy Liebling  
Patricia Lima  
Barbara Lincow  
Daniel and Kathleen Lipinski  
Linda Litwin  
Armando Llanes  
Nadine Lomakin and Michael  
McPhilly  
Deborah and Albert Lorenz  
Robert Losick and Linda Nash  
Nancy Ludgus  
Melissa Lukach  
Robert and Patricia Lynam  
Colleen W. Marano  
Bob and Sue Ann\* Marburg  
Linda and David Marder  
Terry Ann Marek  
Mary and Jack Markov  
Randi Marrasso  
Jane Martin  
Linda Martin  
Nancy Martin  
Robert McCarthy  
Marie McCullough  
Patrick McDonald and  
    Martine Combal, In Honor Of  
    Betsy Oliphant Ross  
Elizabeth McDons, In Honor Of  
    Betsy Oliphant Ross  
Chris McDowell  
Vicki McGarvey  
Margaret E. McGovern  
Brian McGraw  
Kim McKnew  
John McMillian  
Donette McPoyle  
Andrea D. Meals  
Meryle Melnicoff  
Jackie Meltzer, In Honor Of  
    Betsy Oliphant Ross  
Mark Mendenhall  
Faith and John Midwood  
Joyce and Mark Miller  
Danny Miller  
Lina Minicucci  
Elisa and Dom Minni  
Ann Mintz and Clifford Wagner  
Laurent Moe  
Melinda Montanaro  
Tina Morrison, In Honor Of  
    Flynn and his senior year  
Brad Moss and Laurie Gottlieb,  
    In Honor of Harvey Swedloff  
David N. and Laurel S. Mosteller  
Geraldyn Moyer  
Theodore and Theresa Munz  
Joyce Murphy  
Judith Nagle  
Linda Naskret  
Mara Natkins  
Debbie Neibauer  
Hillary Nelson  
Paula and Lawrence Ninerell  
Marta Nolan-Alley  
Amy Norr  
Daniel and Jeannette Norris  
Lora Northern  
Hannah Olanoff  
Margaret Olson  
Jenna Olszak  
Jeanne Omans  
Hugh O'Neill  
Nicole and James Onesti  
Shawn Orr  
Julie and Eric Orts  
Stanton S. Oswald and Phyllis Weber  
Douglas L. Overtoom  
Natasa Pajkovic  
Michael Palazzo  
Blair Pallas  
Deborah Panagacos, In Honor Of  
    Betsy Oliphant Ross  
Antonio Paola  
Brian Parker  
Emelie Passow  
Anne and Ted Patterson  
Alisa Peet  
Kristen Perlman  
Marthenia Perrin  
Belinda Peterson  
Bill Pfeifer  
Anna Phillips  
Karen Piercy  
Lucille Pilling  
Jaye Pinch  
Ronnie Pleet  
John and Victoria Podolski  
Amy Polis  
Steven Portman  
Brian Rath  
Timothy and Joyce Ratner  
Paul and Ellen Rawicz  
Matthew Reddin  
Abi and Craig Reed  
Kathleen Regan  
Krista Reichard  
Erin Reilly  
Ms. Mary Reinhart  
Rosemarie Retacco  
John and Virginia Rice  
Kenneth Richman  
Dana Ridley  
Jacqueline Riedel  
Elisa Riesenbach  
Fran Rissmiller  
Marjorie Robbins  
Eve and Charles Robbins  
Robert Robinson  
Bonnie and Len Romberg  
Barbara and Anthony Rooklin  
Beverly Rosen  
Maxine Rosen  
Martin and Carol Rosenblum  
Dean Rosencranz  
Alexis Rosenfeld  
Elynn Rosenfeld  
Nina Rossi  
Maggie and Jay Ruane  
Edward and Elizabeth Rubenstone  
Bernard and Barbara Ruegauer  
Janice Saibel  
Desiree Salera  
Robin Sampson  
Katherine Sanderson  
Vicki Sarnoff  
Vicki Satinsky  
Matteo Scammell  
Karyn L. Scher  
Jordan Schilling  
Jane Schloss  
Linda Schneider  
Patty Schoelkopf  
Robert Schwartz  
Gail Scott and  
    Thomas D. Quinlan  
Patricia Scott Hobbs  
Hideko Secrest  
Henry Seigel  
Annilee Seitchick  
Deniz Selman  
Kathleen Senkow  
Karen and Bob Serenbetz  
Gioia Sharp  
Sandi Sherr  
David W. Sharp  
Wendy and Matthew Shilling  
Laura Shook  
Hedvah Shuchman  
Charlotte Sibley  
Donald and Marilyn Silberberg  
Debbie Silver  
Eunice Silver  
Caroline Simon  
Ms. Karen Singer  
Judith Skillings  
Carleene and David Slowik  
Dennis Raymond Smeal  
Ariana Smith  
Bruce and Penny Smith  
Colleen Smith  
Joseph Smith  
Kathleen Smith  
Wayne Snover and Janet Tebbel  
Robert Snyder  
The Snyder Family



# FRINCE BAR

WATERFRONT'S NEIGHBORHOOD RESTAURANT  
SOULFUL PUB CUISINE . ARTISTIC COCKTAILS.

10% OFF FOR ARDEN PATRONS



Get closer to the artistic work



Ensure arts access to children in Greater Philadelphia



Enjoy an engaged community of theatre enthusiasts!

## Become a Sylvan Society Member

With an annual donation of \$1,000 or more, Sylvan Society members are the roots that keep the Arden grounded and stable, while allowing our people, programs, and purpose to grow and thrive.

By joining our community of leadership donors you'll enjoy concierge services, exclusive access, and recognition for a full year.

Join the  
Sylvan Society or  
learn more here:



[ardentheatre.org/sylvan](https://ardentheatre.org/sylvan)

To learn more, please contact Orelí Uzdavinis at 215.922.8900 x131 or [ouzdavinis@ardentheatre.org](mailto:ouzdavinis@ardentheatre.org)

# Thank You to Our Supporters

Emily Soloby  
Vicki and Evan Solot  
Heather Speirs  
Margaret R. Spencer  
Pamela Spiller  
Gary E. Stahl and  
Deborah S. Stahl  
Dionne Stanfield  
Konnie Stark  
Ms. Naomi Starobin  
Paul Steinberg  
Jerry Steiner  
Dr. Christina Stasiuk^  
Joel and Barbara Stewart  
Louise and David Strawbridge  
Fred Stuart  
Kathleen Sullivan  
Elizabeth Svenson  
Gary and Betty Szatkowski  
Cheryl Taddei  
John Tarves  
Elizabeth Taylor  
Sandra Telep  
Letty Thall  
Hannah Thomas  
William Thompson  
Cinnamon Tinsley  
The Tobias Family  
Charles Todd  
Bill and Patti Toner  
Elizabeth Torres

Richard Trama  
William Travis  
Janize Ulzheimer  
Carol Usonis  
Carol R. Vahlstrom  
Heather Van Horn  
Valeria Vasilevski  
Cynthia L. Vena  
Larry Viezel  
Frank and Carol Vita  
Jonathan Waller  
Carolyn Walter  
Thomas Wand  
Ellen Watson  
Jacqueline Weber  
Harri Weinberg  
Taube and Sam\* Weinberg  
Margo Weishar  
Carol Weisl  
Kate Weiss  
Sharon Wellons  
Liz Welsh  
Shannon Welsh  
Leslie and Ellen Welson  
Beverly Werner Caplan  
Carol Ann Wesh  
Gary Whitley  
Robert C. Wickline  
Howard Wiener  
Carol Williams  
Kendal Williams

Dora and Oscar Wilsker  
Laura Windham  
Angela and Michael Winterrowd~  
Marcia Witlin-Basickes  
Arnold Wolf and Fern Tablin  
Sam and Kuna Yankell  
Brian and Marion Young  
Loretta Young  
Chris Young  
Julie Zaffarano  
Marc and Pam Zisselman  
Esther Zoblin  
Jennifer Zwetolitz

\* Denotes a deceased supporter  
+ Denotes a gift of goods or services  
^ Includes a matching gift  
~Includes a monthly gift

*This list represents gifts made through  
October 1, 2024*

## FORK

LUNCH BRUNCH & DINNER



306 MARKET ST PHILA | FORKRESTAURANT.COM



# Thank You to Our Supporters

## *Gifts in Memory Of...*

### **ALFONSO ANDRADE**

Gabriela Andrade

### **JUDY BARBUSH**

Christine and Matt Kozsuch

### **TOM BEAM**

Carol Beam

### **MARY ELLEN CONABOY**

Barrie duBois

### **ERNEST CUFF**

Ellen Deacon

### **MARJORIE DICKEY**

Rhonda Dickey

### **JERRY E FREEDMAN**

Sherri Freedman

### **LEONA E. GRAHAM**

Rick and Sharon Graham

### **JAMES J. HANEY III MD**

Anonymous (4)

Sherri Becker

Christopher Bradie

Hillary and Gene Curran

Beth Darrow

Janice Dathe

Alan and Fran Domers

Frank and Sara Donnelly

Bill Dooley

Ann Marie Fritz

Coeli Genter

Rosanne and Bob Grant

Joanne Halscheid

Patricia Haney

The Harris-Ketterer Family

Jennifer Heist

Dr. William Herring and

Mrs. Patricia Herring

Michael Johnson

Amy Kiraly

Madeline Levy

Geralyn Moyer

Deborah and Albert Lorenz

Brett Murphy

Norman Family

Sue and Tom O'Donnell

Maggie and Jay Ruane

Barbara Rubel

Scott and Maria Schaffer

Lindsay and Pete Seelig

Bill and Patti Toner

Karen and Frank Ulmer

Frank and Carol Vita

Carol Ann Wesh

Richard Wesh and Family

### **LUCKY HERTFELDER AND SHARON CLAUSON**

Heidi Hertfelder

### **DR. STEPHEN KAY**

Dr. Rhonda Karp

### **MARY C. KEENAN**

Kara Keenan Sweeney

### **MILT AND ROZ KLEIN**

Ken, Eva and Aaron Klein

### **JOHN KOSCELNIK**

Valerie Koscelnik

### **SHEILA KUTNER**

Dr. Beverly Emanuel

Alan Kutner

### **HOWARD MAGEN**

Cirel Magen

### **SUE ANN MARBURG**

Bob Marburg

### **MOXIE MCCUTCHEON**

Celestine Silverman

### **MIRIAM NORRIS**

Daniel and Jeannette Norris

### **KRISTIN OSGOOD LAMELAS**

Diane Hlywiak, Esquire

### **GEORGE AND DOLORES OTTINGER**

Stephen and Kathy Thompson

### **RICHARD REPETTO**

Dan Rothermel and

Michael Hairston

### **ANNIE RICHARDSON**

Anonymous

### **JILLINE RINGLE**

RM Perdick and LB Smith

### **JULIAN ROSTAIN**

Anthony Rostain

### **GEORGE R. SZYMANSKI, ESQ.**

Dr. Dolores Szymanski

### **GERI TALLONE**

Scott and Lynda Glading

### **ASTER WAMSER**

Polly Shaffer

### **SAMUEL WEINBERG**

Taube Weinberg

### **DEBBY YODER**

Paul and Andrea Downie

### **CASEY ZEFF**

Eileen Heisman and Marty Tuzman

## *Gifts To Named Funds...*

### **NAMED SEATS THIS SEASON**

Kelli Hargreaves

Phil and Michelle Hatfield

Jason Vail

### **ANDREA MENGEL FUND**

Derick Dreher

Independence Foundation

Susan Sherman

### **ANN B. MCNAMEE FAMILY THEATRE FUND**

Dennis and Louise Buckley

Dennis and Melissa Rodkin

Robert and Joan McLaughlin

### **THE BRODIE FAMILY, IN HONOR OF DR. MAMA'S RETIREMENT**

The Brodie Family

### **THE DR. MINDY GOLDBERG ROSE INTERNSHIP FUND**

Nancy and Bob Elfant

Equitable/ AXA Foundation

Charles Rose

Heidi and Mitchel Rubin,

In Honor of Nathan Dorman

Dorothy Sheridan

### **THE BERNARD AND CAMILLE ROSENBERG FAMILY THEATRE FUND**

Bernard and Camille Rosenberg



# Board and Committee Members

## Board of Directors

Michael A. Donato, *President*  
Rayenne Chen, *Vice President*  
Rhonda Ball, *Vice President*  
Michael S. MacFarland, *SVP, Treasurer*  
Richard L. Maimon, *Secretary*  
Kelly Colarelli  
Anne Cook  
Robert Elfant  
Nancy Elfant  
Elizabeth A. Fernández-Viña  
Elizabeth H. Gemmill  
Jennifer Harmelin  
Richard Harris  
Valerie I. Harrison  
Ann Marie Horner  
Holly Kinser  
Dr. Saifuddin T. Mama  
Amy L. Murphy  
Terrence J. Nolen  
Hon. Rosalyn K. Robinson  
Charles H. Rose  
Monica Rosenthal  
Genieve Shields  
Lee van de Velde  
Steve Wolfson  
Diane Dalto Woosnam  
Ellen Yin

## Board Executive Committee

Michael Donato, *Chair*  
Michael MacFarland  
Rhonda Ball  
Rayenne Chen  
Robert Elfant  
Jennifer Harmelin  
Dr. Valerie Harrison  
Holly Kinser  
Richard L. Maimon  
Genieve Shields  
Lee van de Velde

## Finance Committee

Michael MacFarland, *Chair*  
Juan De León Domenech  
Ellen P. Foster  
Anne Marie Horner  
Dan Hilferty  
Daniel Krewson  
Eliza Orleans  
Harvey Swedloff  
Steve Wolfson

## Board Development Committee

Rayenne Chen, *Chair*  
Valerie Harrison, *Chair*  
Michael Donato  
Robert Elfant

## Board Development Committee (cont.)

Holly Kinser  
Saifuddin T. Mama  
Lee van de Velde  
Diane Dalto Woosnam

## Personnel Committee

Rhonda Ball, *Chair*  
Michael Donato  
Elizabeth H. Gemmill  
Richard Harris  
Michael S. MacFarland  
Charles H. Rose

## Engagement Committee

Jennifer Harmelin, *Chair*  
Genieve Shields, *Chair*  
Lee van de Velde  
Anne Cook  
Elizabeth Fernández-Viña  
Nancy Elfant  
Camille Rosenberg  
Hope Yursa

## Facilities Committee

Richard L. Maimon, *Chair*  
Mike Green  
James Kronzer  
John J. McCawley

## Facilities Committee (cont.)

H. Hetherington Smith  
Chris van de Velde

## Equity, Diversity, and Inclusion (EDI)

Rayenne Chen  
Anne Cook  
Joy L. De Jesús  
Robert Elfant  
Kash Goins  
Richard Harris  
Dr. Valerie Harrison  
Zuhairah McGill  
Amy L. Murphy  
Bi Jean Ngo  
Terrence J. Nolen  
Hon. Judge Rosalyn Robinson  
Clayton Tejada  
Orelí Uzdavinis

## Young Friends Committee

John Connolly  
Elizabeth Fernández-Viña  
Kathleen Johnson  
Alexa Josaphouitch  
Meredith McGovern  
Jenny Morrison  
Aby Rodríguez



all you need is fresh flowers

WWW.NEFLOWERBOUTIQUE.COM  
NORTHEASTFLOWERS@GMAIL.COM  
@NE\_FLOWER\_BOUTIQUE

OLD CITY  
(267)570-7707  
60 N 2ND ST

NE PHILLY  
(215)437-1913  
11702 BUSTLETON AVE

NE FLOWER BOUTIQUE  
www.neflowerboutique.com

# Staff

**Artistic**  
Producing Artistic Director.....Terrence J. Nolen  
Associate Artistic Director.....Jonathan Silver  
Artistic Assistant.....Nick Hatcher  
Commissioned Playwrights.....Kash Goins, Robi Hager  
Rogelio Martinez, Iraisia Ann Reilly

**Administrative Management**  
Managing Director.....Amy L. Murphy  
General Manager.....Clayton Tejada  
Business Manager.....Paola Cruz  
Audience Services Manager.....Tanner Richardett  
Facilities and Office Manager.....Larry Brooks  
Arden Professional Apprentices.....Abby-Jeanne Ruger, Ashley Austin, Haley Hartline,  
Ian Gaskin, Malena Rivera, Zycara Jones

**Marketing**  
Director of Marketing and Communications.....Mike Hogue  
Marketing Manager.....Erika Byrnison  
Communications Manager.....Aseal Saed  
Publicist.....En Route Marketing  
Marketing and Group Sales Associate.....TJ Harris

**Development**  
Director of Development.....Jessica Abel  
Manager of Individual Giving.....Orelif B. Uzdavinis  
Development Coordinator.....Tylar Benedetto  
Development Associate.....Rodrick Edwards

**Education**  
Education Outreach Manager.....Josh Thorps  
Drama School Manager.....Elise D'Avella  
Education Associate.....Francine Odri  
Teaching Artists.....TJ Harris, Campbell O'Hare, Brennen Malone,  
Jessica Money, Julianna Babb, Cindy Paul, Andrea Rose Cardoni, Danny Walsh, Marie McVeigh  
Ella Kahan, Katie Hahn, Zoe Hollander, Katherine Perry, Adam Howard, Charis Duke,  
Eliana Fabiyi, Eliana Pinckney, Gina Giachero, Jake Collins, Jordan Hunter-Fidalgo, Lexi Schreiber  
Nadia Ra'Shaun, Tanaquil Marquez, William Daniels, Daniel Matarazzo, Hallie Berger, Riley Irvine

**Front of House**  
Box Office Manager.....Jason Blacketer  
Assistant Box Office Manager.....Amanda Adams  
House Manager.....David Demnicki  
Front of House Associate.....Kathryn Bondi  
Front of House Assistants.....Adiah Hicks, Becky Fleckner, Catey Midla, Chelsey Gaskins,  
Emily Hernandez, Erica Lowry, Glynnis Nadel, Jenny Glickman, Laura Duffy, Mads Klemm,  
Margaux Cattelona, Morgan McNulty, Skyler Gonzalez, Syaera Cort, Will Vence Jr.

**Production**  
Production Manager.....Kate Nelson  
Technical Director.....Evan Lewis  
Assistant Technical Director.....John Winter  
Electrics Supervisor.....Martin Stutzman  
Sound Supervisor.....John Kolbinski  
Costume Supervisor.....Stephanie Shaw  
Properties Supervisor.....Shane Dreher  
Charge Scenic Artist.....Brit Bannon  
Production Assistant.....Kylan Bailey  
Assistant Stage Manager.....Jillian Chase  
COVID-19 Safety Managers.....Clayton Tejada, Jonathan Silver  
Electricians.....Meghan Moore, Anthony Wiegand  
Electrics Programmers.....Ethan Paone  
Wardrobe Supervisor.....Calla Nelles-Sager  
Audio Engineer.....AJ Bloomfield  
Stitchers.....Amanda Carano, Morgan Porter



# CREATIVE REAL ESTATE FOR CREATIVE PEOPLE



## Happy Clients

Charlie DelMarcelle  
*Barrymore Award  
Winning Actor*  
Katherine Fritz  
*Costume Designer*



**BENJAMIN CAMP**

**REALTOR® & CCSJ Team Leader**  
*Actor & Producer*



**JAMES SUGG**

**REALTOR®**  
*Actor & Sound Designer*

The CCSJ Team is proud to continue our *Support the Arts Initiative*, donating to local performing arts organizations for every closing.

Whether you're on-stage, behind the scenes, or in the audience, choose the REALTOR®s who support our arts community.



Contact  
Benjamin



610.220.8550  
ben@ewrhomes.com



Contact  
James



267.303.2827  
sugg@ewrhomes.com

215.893.9920

THESTELLARCHOICE.COM | ELFANT WISSAHICKON  
2000 PINE ST, PHILADELPHIA, PA 19103

Elfant   
Wissahickon  
- REALTORS® -