

ARDEN THEATRE COMPANY PRESENTS

POTUS

**Or, Behind Every Great Dumbass Are Seven
Women Trying to Keep Him Alive**

By
Selina Fillinger



Arden
THEATRE CO.

Honorary Producers:
June and Steve Wolfson

**EXTENDED!
THRU**
SEP 12 - OCT 13
On the F. Otto Haas Stage

SUBSCRIBE TO THE 2024/25 SEASON

PRORATE YOUR TICKETS TO A 3, 4, OR 5-SHOW SUBSCRIPTION!

INTIMATE APPAREL

By
Lynn Nottage

Directed By
Amina Robinson

OCT 25 - DEC 1

HOLY GRAIL OF MEMPHIS

WORLD PREMIERE

By
Michael Hollinger

Directed by
Terrence J. Nolen

JAN 16 - FEB 23

AUGUST WILSON'S KING HEDLEY II

Directed by
James Ijames

FEB 27 - MAR 23

RENT

Music, Lyrics, and Book by
Jonathan Larson
Directed by
**Terrence J. Nolen
& Steve Pacek**

MAY 15 - JUN 8

**BEST of
PHILLY**

2024

Philadelphia Magazine's Best of Philly® 2024 - Best Theater Subscription!

WELCOME

From the Producing Artistic Director



Welcome to *POTUS: Or, Behind Every Great Dumbass Are Seven Women Trying to Keep Him Alive*. This play premiered on Broadway in 2022 when playwright Selina Fillinger was 28 years old, making her one of the youngest female playwrights in Broadway history. Plays reflect the time when they were written and, at their best, resonate in exciting new ways as they continue to be produced. *POTUS* does just that.

I am thrilled that such an extraordinary group of artists are bringing this play to life, led by the inimitable Jennifer Childs. How lucky we are to have Jen living and working in Philadelphia—fostering rich relationships with artists and audiences, creating community through the making of theatre, finding meaning through making people laugh. Many of you know Jen's work as the founder and Producing Artistic Director of 1812 Productions. For those who don't, go see 1812's hilarious production of *The Play That Goes Wrong* featuring another all-star Philly cast running this December!

Our amazing season this year includes five very different stories: a raucous satire, an intimate drama, a world premiere comedy, a continued commitment to August Wilson's American Century Cycle, and a new production of a groundbreaking musical. *Philadelphia Magazine* just awarded us Best of Philly for "Best Theater Subscription 2024." If you are already a subscriber, thank you (you won!). If not, subscribe for the rest of this season. One of the joys of subscribing is being surprised—discovering a new play, seeing a great Philly artist in a new light, hearing beloved songs from a different perspective. These stories will speak to you. Please join us.

Thank you for being here for *POTUS* and the launch of our 2024/25 season. Thank you for supporting Philadelphia theatre.

P.S. - We just announced our Arden Children's Theatre productions for this year: *Peter Pan* and *The Hobbit*! These beloved stories encourage kids to venture out into the world and seek new adventures, embodying the idea that life is more exciting and rewarding when you make your world bigger. Make plans now for a family holiday adventure to Neverland!

A Message from our Honorary Producers



Welcome to the Arden's 2024-25 season! We are so tickled to support the Arden Theatre Company once again as Honorary Producers of *POTUS*! We particularly wanted to sponsor this show because it embodies three things we love—comedy, female empowerment, and Jen Childs! As longtime patrons and supporters of the Arden, we know we can always count on great stories

that offer unique perspectives, spark a conversation, and maybe even challenge the status quo. And, no matter your political persuasions, this brilliant farce brings some much-needed levity to a newsworthy and eventful political season. Under Childs's expert direction, and with a powerful all-female ensemble, we have no doubt that this show will live up to the hype.

Enjoy the performance!

June and Steve Wolfson

ACCESSIBILITY SERVICES

The Arden complies with all applicable federal, state, and local statutes and laws to ensure accessibility to individuals with disabilities who visit our theater. We invite you to visit ardentheatre.org/plan-your-visit/accessibility for more details about our services and offerings.



Accessible Seating & Seating Requests

Removeable seats for wheelchairs & Accommodations for comfort, mobility, & hearing or vision needs



Assistive Listening Devices (ALDs)

Amplification of all onstage sounds. Ask Box Office to borrow. Available with headphones or a t-coil neck loop.



Open Captioning (OC)

Text display of all dialogue and sounds. Available select Friday & Saturday performances.



Audio Description (AD)

Live verbal commentary of all visual elements. Ask Box Office for access. Available select Friday & Saturday performances.



***NEW!* Smart Caption Glasses (SCG)**

Wearable, customizable closed captioning glasses. Available 1 week after Opening Nights. Ask Box Office to borrow.



Large Print Programs

Enlarged-text printed programs for low-vision patrons. Ask Box Office to borrow.



Shadow American Sign Language (ASL) Interpretation

Live ASL interpretation shadowing the action of the show. Available at select Children's Theatre performances.

We encourage any feedback and suggestions regarding our accessibility services to ensure we're doing the best we can. Please contact Tanner Richardett, Audience Services Manager, at trichardett@ardentheatre.org

ARDEN THEATRE COMPANY PRESENTS

POTUS

Or, Behind Every Great Dumbass
Are Seven Women Trying to Keep Him Alive

By Selina Fillinger

Scenic Designer
COLIN MCILVAINE

Costume Designer
ARIEL WANG

Lighting Designer
KRISTA SMITH+

Sound Designer
ELIZABETH ATKINSON

Assistant Director
MEGAN BELLWOAR

Fight Choreographer/Intimacy
ELI LYNN

Stage Manager
THOMAS E. SHOTKIN*

Directed by JENNIFER CHILDS

Honorary Producers: June and Steve Wolfson

Originally produced on Broadway by
SEAVIEW 51 ENTERTAINMENT GLASS HALF FULL LEVEL FORWARD
SALMAN AL-RASHID RUNYONLAND PRODUCTIONS SONY MUSIC MASTERWORKS ONE COMMUNITY
JAY ALIX AND UNA JACKMAN JONATHAN DEMAR IMAGINE EQUAL ENTERTAINMENT LUCAS KATLER DAVID J. LYNCH
LEONID MAKARON MARK GORDON PICTURES LIZ SLAGER TED SNOWDON NATLIE GORMAN/TISH BRENNAN THROOP
and THE SHUBERT ORGANIZATION
MARK SCHACKET, EXECUTIVE PRODUCER

THE VIDEOTAPING OR MAKING OF ELECTRONIC OR OTHER AUDIO AND/OR VISUAL RECORDINGS OF THIS PRODUCT AND DISTRIBUTING RECORDINGS OR STREAMS IN ANY MEDIUM, INCLUDING THE INTERNET, IS STRICTLY PROHIBITED, A VIOLATION OF THE AUTHOR(S)'S RIGHTS AND ACTIONABLE UNDER UNITED STATES COPYRIGHT LAW.



Arden Theatre Company receives state arts funding support through a grant from the Pennsylvania Council on the Arts, a state agency funded by the Commonwealth of Pennsylvania.



+ Member of United Scenic Artists
Local USA 829

* Member of Actors' Equity Association,
the Union of Professional Actors and
Stage Managers in the U.S.

inspiring
A LIFE OF BEAUTY



Wood-Mode designers bring your vision to life through creativity and years of product and technical training. For more than 75 years, Wood-Mode has been developing products and training that inspire our designers, so they can inspire you.

Wood-Mode[®]
FINE CUSTOM CABINETS

Visit Wood-Mode.com to get inspired,
explore and learn more.

Wall & Walsh, Inc.
(610) 789-8530
wood-mode.com

8320 West Chester Pike
Upper Darby, PA 19082

A Note

From the Director



What an amazing time to be working on this play! Not only is it during an election cycle, but during an election cycle that has already been full of more surprises and plot twists than any author of farce could imagine. As one of the characters in *POTUS* says early on, “what a time to be alive, isn’t it?”

And while *POTUS* certainly has political resonance, it is its comedic resonance that makes it so important and unique. There are no other theatrical farces that feature an all-female cast. In traditional farces women are always secondary characters, never the center of the action. And too often they are reduced to stereotypical tropes next to the more nuanced male characters. In this way, farce and the US presidency have something in common.

POTUS offers a cast of ferocious women the opportunity to be outrageous and funny and flawed and fully themselves. It allows us to see female characters who are both ambitious and asinine, vulnerable and vulgar. It challenges us to accept that women can speak to each other with the candor and coarseness usually reserved for men in a David Mamet play. It reminds us that while we have never elected a female president in the United States, there are hundreds of thousands of women cleaning up messes they didn’t make and keeping this American train on its tracks.

POTUS will close before our presidential election in November. And, as of the writing of this director’s note, I have no idea what the outcome of that election will be. My hope is that, whether it is this November or sometime in the very near future, we can accept a female leader, as we have accepted all our male leaders, with all their complications, foibles, and awkward laughs. And that *POTUS*, this beautiful and funny play, will be irrelevant.

A handwritten signature in black ink, appearing to read 'Jan'.

Cast of Characters

Bernadette.....	Kimberly Gilbert*
Chris.....	Jessica Johnson*
Margaret.....	Rachel Leslie*
Stephanie.....	Suzanne O'Donnell*
Dusty.....	Alia Munsch*
Jean.....	Karen Peakes*
Harriet.....	Susan Riley Stevens*

UNDERSTUDIES

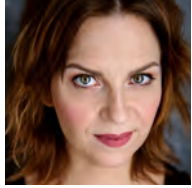
Kristin Finger (Bernadette), Kelsey Hébert (Stephanie), Tasha Holmes (Margaret), Annette Kaplafka (Harriet), Brittany Onukwugha (Chris), Sarah Stryker (Jean), Satchel Williams (Dusty)



Arden Theatre Company is a professional company employing members of Actors' Equity Association.
*Member of Actors' Equity Association, the Union of Professional Actors and Stage Managers in the United States.

Please check houseboards for any program changes.
Taking pictures and/or making visual or sound recordings is expressly forbidden.

Actors' Equity Association (AEA), founded in 1913, represents more than 45,000 actors and stage managers in the United States. Equity seeks to advance, promote and foster the art of live theatre as an essential component of our society. Equity negotiates wages and working conditions, providing a wide range of benefits, including health and pension plans. AEA is a member of the AFL-CIO, and is affiliated with FIA, an international organization of performing arts unions. www.actorsunion.org



KIMBERLY GILBERT (*Bernadette*) Arden debut. Washington, DC: Ford's Theatre, Round House Theatre, Theater J, Studio Theatre, The Kennedy Center, Shakespeare Theatre Company, Olney Theatre Center. Company member at Taffety Punk and Woolly Mammoth Theatre. Regional: Penumbra Theatre, Syracuse Stage, Portland Center Stage, Denver Center, Cincinnati Playhouse in the Park, Pennsylvania Shakespeare Festival and Adirondack Theatre Festival. Kimberley earned her MFA with the inaugural class of The Academy at Shakespeare Theatre Company. She has received two Helen Hayes Awards in 2015 and 2024. A Delco native, she is thrilled to be making her professional debut here in Philly.



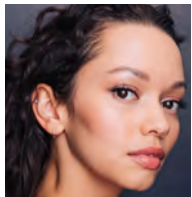
JESSICA JOHNSON (*Chris*) Arden: Papa Ge in *Once on This Island* (Barrymore Nominated), Jo in *The Legend of Georgia McBride*. Regional: Kaila in *STEP MOM, STEP MOM, STEP MOM* (Interact Theatre, Barrymore Nominated); Opal in *Fat Ham* (Wilma Theatre, Barrymore Nominated), Gina in *a hit dog will holler* (Azuka Theatre, Barrymore Nominated), Odessa in *Sandblasted* (Theatre Horizon); Celie in *The Color Purple* (Theatre Horizon, Barrymore for Best Lead Performance in a Musical); Education: James Madison University. VOTE! www.jessicamjohnson.com



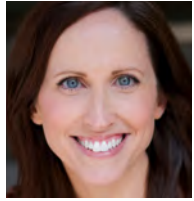
RACHEL LESLIE (*Margaret*) NYC: World Premiere of *Fish* and *Harry Potter and the Cursed Child*. Film/TV: *FBI: Most Wanted, Billions, Difficult People, Alpha House, Law & Order, and Unforgettable*. She is a member of The Actor's Center and on the board of The Episcopal Actors' Guild, an organization that provides emergency aid and support to performers of all faiths and none.



SUZANNE O'DONNELL (*Stephanie*) Arden: *As You Like It, Godspell, St. Joan, Hamlet, Working, Romeo and Juliet, Dancing at Lughnasa*. Regional: 1812 Productions, Pennsylvania Shakespeare Festival, Orlando Shakes, Folger Theatre, Florida Rep, Arts Center of Coastal Carolina, and Cape May Stage. Suzanne is thrilled to return to the Arden Theatre's stage which she counts as a treasured artistic home. Love and gratitude to my Philly roots, and my family Jim, Rose, and James. suzanneodonnellactor.com



ALIA MUNSCH (*Dusty*) Arden: *Into the Woods*. NYC: *Spandex the Musical* (Off-Broadway) Tours: *Motown the Musical* (Nat'l Tour). Regional: *Pippin* (Weston Theatre Co.), *Gentleman's Guide to Love and Murder* (Hippodrome Theatre), *In the Heights* (Gateway Playhouse), *Carousel* (Riverside Theatre), *Oklahoma!* (Denver Center for the Performing Arts), *West Side Story* (IHI Stage Around Tokyo), *Smokey Joe's Café* (Jon W. Engeman Theater). Education: Barnard College, BA Dance. NYU Steinhardt, Master's Music. www.aliamunsch.com @aliamunsch



KAREN PEAKES (Jean) Arden: *A Little Night Music*, *A Prayer For Owen Meany*, *Twelfth Night*, and *Boxcar Children*. Karen is a Barrymore nominated actor, working primarily in Philadelphia. Regional: Walnut Street Theatre, Wilma Theater, InterAct Theatre Company, 1812 Productions, Act 2 Playhouse, The Pennsylvania Shakespeare Festival, Lantern Theatre Company, Delaware Theatre Company, and People's Light. The Folger Theatre, Shakespeare Santa Cruz, and The Peterborough Players. Karen is so pleased to be back at the Arden - and with such a fantastic group of collaborators! She's a two-time Audie nominated audiobook narrator of over 80 titles, and proud mom to Owen. Love to Ian.



SUSAN RILEY STEVENS (Harriet) Arden: Maria in *Cinderella*. Regional: Martha in *Who's Afraid of Virginia Woolf* (Walnut Street Theatre). Arden Theatre Company, 1812 Productions, Walnut Street Theatre, PA Shakespeare Festival, People's Light, Act II Playhouse, Bristol Riverside, Actors Theatre of Louisville, Dallas Theatre Center, Yale Rep, Portland Stage Company, Peterborough Players and Asolo Repertory Theatre. Barrymore Award for *Bad Dates* at Act II Playhouse. MFA from Yale School of Drama. Susan is thrilled to be back at the Arden!

SELINA FILLINGER is an LA-based writer and performer. Original plays include *The Collapse*; *Something Clean*; *Faceless*; and *The Armor Plays: Clinched/Strapped*. Selina recently made her Broadway debut with her seven-woman farce, *POTUS: Or, Behind Every Great Dumbass are Seven Women Trying to Keep Him Alive*. Her plays have been developed at Roundabout Theatre, Manhattan Theatre Club, McCarter Theatre Center, Williamstown Theatre Festival, The Old Globe, Alley Theatre, The Repertory Theatre St. Louis and Northlight Theatre. She's currently commissioned at South Coast Repertory and Roundabout Theatre. She was a Hawthornden Fellow and a resident of McCarter's Sallie B. Goodman Artist's Retreat; *Something Clean* is the recipient of the 2019 Laurents/Hatcher Award and *Clinched/Strapped* received the 2019 Williamstown Theatre Festival's L. Arnold Weissberger New Play Award. *POTUS* was on the 2019 Kilroys List. Selina wrote for the third season of Apple TV's *The Morning Show* and is developing a feature for Chernin/Netflix.

JENNIFER CHILDS (Director) is Producing Artistic Director for 1812 Productions: Philadelphia's All-Comedy Theatre Company. For 1812 she has created over 20 original comedies including the annual political humor show, *This is the Week That Is*. She has been performing and directing at the Arden since 1992, most recently directing *What The Constitution Means to Me*. Other recent directing credits include *Noises Off* at Delaware Theatre Company, *Last of the Red Hot Lovers* at Walnut Street Theatre and *The Play That Goes Wrong* at 1812 and Pennsylvania Shakespeare Festival. Up next - *This is the Week That Is* at 1812! Love to Scott, Lily and Rita.

MEGAN BELLWOAR (Assistant Director) Recent directing projects include: *Children of the Sun* (Philadelphia Artists' Collective), *The Fantasticks* (Quintessence Theatre Group), *A View From The Bridge* (New Light Theatre, 2023 Barrymore nomination/Outstanding Direction of a Play). Acting credits include Arden Theatre Company, Lantern Theatre Company, Walnut Street Theatre, Inis Nua Theatre Company, Delaware Theatre Company, 1812 Productions, and People's Light, with media/Barrymore acting nominations for *Ghost Writer* (Arden Theatre Company), *The Weir* (Arden Theatre Company), and *Beauty Queen Of Leenane* (Lantern Theater Company), among others. Love to Alice, with whom everything is funny. megan.bellwoar.com

COLIN MCILVAINE (Scenic Designer) Arden: *The 25th Annual Putnam County Spelling Bee* and *School Girls; Or, The African Mean Girls Play*. Regional: Scenic Designer for *The Play That Goes Wrong*, *This is the Week That Is* (1812 Productions); *Noises Off* (Delaware Theatre Company); *The Last Yiddish Speaker* (Interact Theatre Company); *Extreme Home Makeover* (Theatre Exile); *A Deed Without a Name* (Troy Foundry Theatre); Associate Scenic Designer for *Daddy* (Almeida Theatre); Assistant Scenic Designer for *sandblasted* (Vineyard Theatre); *A Christmas Carol* (Guthrie Theater); *Le roi Arthus* (Bard Summerscape Opera). Education: BA Theatre (University of Maryland); MFA Scenic Design (Temple University). 2018 Independence Foundation Fellow; American Theatre Magazine: 20 People to Watch; colinmcilvaine.com

KRISTA SMITH (Lighting Designer) Arden: *The Lehman Trilogy*, *Red Riding Hood*. Regional: *King Lear* (La MaMa), *The Good Person Of Setzuan* (The Wilma Theater), Krymov Lab NYC, *Big Trip* (La MaMa), *A Christmas Carol* (People's Light), *One Man Nutcracker* (Theatre Exile), *Wig Wag* (Fringe Arts), *The Thanksgiving Play* (Dorset Theatre Festival), *What the Constitution Means to Me* (Weston Theater Company), *sandblasted*, *Head Over Heels*, *TOWN* (Theatre Horizon), *The Mousetrap* (Hartford Stage), *Letters You Will Not Get* (The American Opera Project), *Ni Mi Madre* (Rattlestick Theater), *Zoetrope* (Exquisite Corpse Company). Training: MFA Yale School of Drama. Proud member of USA 829. www.KristaSmithLD.com

Who's Who

ARIEL WANG (Costume Designer) Arden: *The 25th Annual Putnam County Spelling Bee*. Regional: *Good Person of Setzuan* (Wilma Theater); *Noises Off* (Delaware Theatre Company); *King of the Yees* (Princeton University); *The Chinese Lady* (InterAct Theatre Company); *The Raven* (Opera Philadelphia); *Wolf Play* (Theatre Exile); *Reverie, Ready Steady Yeti Go* (Azuka Theatre); *Anon(ymous)* (Princeton University); *Quixotic Professor Qiu* (InterAct Theatre Company). Education: Temple University, MFA in Costume Design and MS in Communication Management. Wang is originally from Beijing, China. www.arielwangld.com.

ELIZABETH ATKINSON (Sound Designer) Arden: *Once on this Island, Assassins, The 25th Annual Putnam County Spelling Bee, Into the Woods, Ragtime, Once, 74 Seconds... To Judgment*. Liz is currently residing in Philadelphia, after many years in Pittsburgh where she was Resident Sound Designer at City Theatre Company. Her freelance career includes regional theatre credits at Applied Mechanics, Wilma Theater, Theatre Exile, Simpatico Theatre, InterAct Theatre Company, Inis Nua Theatre Company, People's Light, Walnut Street Theatre, Yale Repertory Theatre, Hartford Stage, and Quantum Theatre. Liz has also had the honor of exhibiting at the 2007, 2011, and 2015 Prague Quadrennials.

ELI LYNN *they/them* (Fight Choreographer/Intimacy) Arden: *Intimacy for A Streetcar Named Desire*. Regional: Fight Director and Intimacy Director for *Comeuppance, Dance Nation* (Wilma Theatre), *The Play That Goes Wrong* (1812 Productions), *Noises Off* (Delaware Theatre Company), *Camp Siegfried* (Theatre Exile). Fight Director for *The Color Purple, Cymbeline, Sense & Sensibility* (PA Shakespeare Festival), *Shakespeare in Love* (People's Light), *Citrus Andronicus, 'Tis Pity She's A Whore, Sea Voyage* (Philadelphia Artists' Collective). Intimacy Director for *Hurricane Diane* (People's Light), *The Last Yiddish Speaker* (InterAct Theatre). Five time Barrymore Award nominee for Outstanding Choreography. Education: BFA Musical Theatre (Shenandoah University). Artistic Associate at Philadelphia Artists' Collective. Love always to Vanessa. www.Eli-Lynn.com

THOMAS E. SHOTKIN (Stage Manager) Arden: *Assassins, Our Town, The Syringa Tree*. Regional: *The Play That Goes Wrong, This Is The Week That Is, Broads, The Carols, To The Moon, The Big Time, Our Show Of Shows, An Evening Without Woody Allen, Suburban Love Songs, The Four Of Us, Recent Tragic Events, Bat Boy: The Musical* (1812 Productions); *The Play That Goes Wrong* (Pennsylvania Shakespeare Festival); *Sense & Sensibility, Row By Row* (People's Light); *Lieutenant of Inishmore* (Theatre Exile); *The 39 Steps* (Montgomery Theater). Also a former APA! Much love to MB & Dex, and Mom & Dad

TERRENCE J. NOLEN (Producing Artistic Director) is Co-founder and Producing Artistic Director of Arden Theatre Company. Favorite Arden productions include all-Philadelphia casts of *August: Osage County, Death of a Salesman, The Grapes of Wrath, and Hedda Gabler*; and such musicals as *Next to Normal, Sweeney Todd, Pacific Overtures, Violet, and Caroline, or Change*. Terry directed the inaugural production of Arden Children's Theatre, *Charlotte's Web*. He has directed seven world-premiere plays by Michael Hollinger, three by Dennis Raymond Smeal, three by Michael Ogborn, two by Rogelio Martinez, and Bruce Graham's *Something Intangible*. Terry has been nominated for 27 Barrymore Awards for his directing work at the Arden and received awards for *The Baker's Wife; Sweeney Todd; Opus; Winesburg, Ohio; Assassins; Something Intangible; and Fun Home*. He directed Michael Hollinger's *Opus* at Primary Stages in New York and was nominated for a Lucille Lortel Award for Outstanding Director. His short film *The Personal Touch* was nominated for an Emmy Award.

AMY L. MURPHY (Managing Director) A Philadelphia native, Amy co-founded the Arden in 1988 with Terrence J. Nolen and Aaron Posner. She is especially proud of the Arden Professional Apprenticeship program and its contribution to the Philadelphia cultural community. She completed the Executive Program for Nonprofit Leaders-Arts. Amy has served on the Board of the Cultural Alliance and Theatre Philadelphia. She has served on panels for the National Endowment for the Arts, the New Jersey State Arts Council, Theatre Communications Group and the Philadelphia Cultural Fund. Amy was named a Hepburn Fellow 2008-9 by the Katharine Houghton Hepburn Center at Bryn Mawr College.

ARDEN THEATRE COMPANY Founded in 1988, Arden Theatre Company is dedicated to bringing to life great stories by great storytellers—on the stage, in the classroom, and in the community. We create and produce new work through the Independence Foundation New Play Showcase. The Arden Professional Apprenticeship program trains future theatre leaders, and Arden Drama School classes teach children and teens about the craft of making plays. Our access program, Arden For All, makes our work available to the entire community through subsidized tickets and books for economically disadvantaged young people, and our Arden Arts Scholarship Fund provides scholarships for Arden Drama School classes and camps. The Arden has received 13 *Philadelphia Magazine* "Best of Philly" Awards, the Arts & Business Council's Arts Excellence Award, six *City Paper* "Reader's Choice" Awards, four *Philadelphia Inquirer* "Theatre Company of the Year" citations, 77 awards and 440 nominations from the Theatre Philadelphia's Barrymore Awards for Excellence in Theatre, and was named "Best Theatre Company" by *Philadelphia Weekly* in 2009. Arden Theatre Company, a professional, nonprofit 501(c)(3) theatre company, is a member of the Theatre Communications Group, the League of Resident Theatres, Greater Philadelphia Cultural Alliance, Philadelphia Convention and Visitors Bureau, and Old City Arts Association.

Arden Theatre Company wishes to thank Amel Mili, Emmanuelle Delpech, and Tanaquil Márquez.

The Arden has been recognized with 22 Barrymore Nominations!

Assassins

Outstanding Musical Direction

Ryan Touhey

Outstanding Supporting Performance in a Musical

Robi Hager

The BFG

Outstanding Overall Production of a Play

Outstanding Ensemble in a Play

Outstanding Supporting Performance in a Play

Newton Buchanan

Outstanding Choreography/Movement in a Play

**Whit MacLaughlin/Sebastienne Mundheim
& Ensemble**

Outstanding Lighting Design

J. Dominic Chacon

The Lehman Trilogy

Outstanding Overall Production of a Play

Outstanding Ensemble in a Play

Outstanding Direction of a Play

Terrence J. Nolen

Outstanding Leading Performance in a Play

Charlie DelMarcelle

Outstanding Scenic Design & Media Design

Jorge Cousineau

Once on This Island

Outstanding Overall Production of a Musical

Outstanding Ensemble in a Musical

Outstanding Lighting Design

Alyssandra Docherty

Outstanding Scenic Design

David P. Gordon

Outstanding Costume Design

LeVonne Lindsay

Outstanding Direction of a Musical

Amina Robinson

Outstanding Supporting Performance in a Musical

Jessica Johnson & Ryane Nicole Studivant

Outstanding Choreography/Movement in a Musical

Devon Sinclair



*Assassins (2023), The BFG (2023/24),
The Lehman Trilogy (2024), Once on This Island (2024).*
Photos by Ashley Smith, Wide Eyed Studios.

Our thanks to all the artists who made our 2023/24 Season such a success!



HISTORY IS HAPPENING IN
PHILADELPHIA
BEGINS OCTOBER 29

EnsembleArtsPhilly.org

Academy of Music



2024/25

DINING PARTNERS

Restaurants in Old City and surrounding neighborhoods are ready to welcome you!
We recommend these restaurants that support the Arden.

Café Tolia*

26 N 3rd Street
267.687.2533
cafetolia.com
@cafetolia

Cuba Libre*

10 S 2nd Street
215.627.0666
cubalibrerestaurant.com
@cubalibrephiladelphia

The Franklin Fountain*

116 Market Street
215.627.1899
franklinfountain.com
@franklinfountain

Fork

306 Market Street
215.625.9425
forkrestaurant.com
@forkrestaurant

Forsythia*

233 Chestnut Street
215.701.4883
forsythiaphilly.com
@forsythia_philly

Fringe Bar*

140 N Christopher Columbus Blvd
215.375.7744
fringebarphilly.com
@fringebarphilly

High Street Philly

101 S 9th Street
215.625.0988
highstreetonmarket.com
@highstreethoagies

Khyber Pass Pub*

56 S 2nd Street
215.238.5888
khyberpasspub.com
@khyberpasspub

Las Bugambilias*

15 S 3rd Street
267.239.5673
lasbugambiliasphilly.com
@lasbugambiliasphilly

National Mechanics*

22 S 3rd Street
215.701.4883
nationalmechanics.com
@nationalmechanicsphilly

The Plough and the Stars*

123 Chestnut Street
215.238.0499
ploughstars.com
@theploughphilly

Positano Coast

by Aldo Lamberti*

212 Walnut Street 2nd Floor
215.238.0499
positanocoast.net
@positanocoastphilly

Race Street Cafe*

208 Race Street
215.627.6181
racestreetcafe.net
@racestreetcafe

Royal Boucherie*

52 S 2nd Street
267.606.6313
royalboucherie.com
@royalboucherie

Restaurants with * offer a special promotion to Arden patrons.
Please ask your server for details/scan the QR code for more details.

For complete restaurant descriptions visit: ardentheatre.org/dining

Dining Partners as of 9/1/2024



THANK YOU TO OUR GARDEN PARTY SUPPORTERS

PRODUCTING SPONSORS

Nancy and Bob Elfant
Alta and N. Peter Hamilton
Elizabeth Gemmill
June and Steve Wolfson

FEATURE SPONSORS

Harmelin Media
Independence Foundation
Charles Rose and
Karr Barth Associates
Rosenthal Family Foundation

SUPPORTING SPONSORS

Altman Management
Corporation, LLC
Brown and Brown
Insurance Services, Inc.
Anne Cook and Russ Troyer
Domus Construction
Elfant Pontz Properties
Elfant Wissahickon Realtors
Havertown Carpet Co.
KieranTimberlake
Robin and Saifuddin Mama
Parkway Corporation
Lee and Chris van de Velde

SONG SPONSORS

Eileen Heisman and Marty Tuzman
Terry and Ann Marie Horner,
In Honor of Bob and Nancy Elfant
Isdaner & Co. LLC

SUPPORTERS

Eileen Abel
Hank Adamczyk and Iris Melendez
Peter Adams
Lisa Beckman
Kathleen Benedetto
Bill and Brenda Bertrand
Ian and Ryane Nicole Beutler
Louis Bluver
Anne Bondi
Patty Bowman
Gary Bramnick
DeDe and Tony Brown
Bob and Cheryl Carfagno
Karl Carter
Christopher and Jeffrey Carver
Lorene Cary
Steven and Helena Cochrane
Sherri Cohen
Kelly and John Colarelli
John Connolly
Betty Cooper
Joy De Jesús and James Reynolds
Juan De León Domenech
Nancy and Nishan Dersimonian
Matthew Donahoe
Michael A. and Edward C. Donato
Barrie duBois, In Memory Of
Mary Ellen Conaboy
Jeff and Michelle Eichen
Donna and Norman Faye
Cheryl and Steven Feil
Jeanne B. Fisher and Robert F. Lang
Pamela Fisk
Ellen and Tim Foster
Christina and David Fryman
Maria Gallagher
Linda Gerhard
Eileen and Norman Gray
Shirlyelaine Gray

Jane Greenberg
Kate Goark-Shields
Leonard Haas
Carole Haas Gravagno
Lisa Hantman
Joanne and Jon Harmelin
Susan Harris
Dr. Valerie Harrison
Phil Hatfield
Daniel and Monica Hilferty
Jill Hyman Kaplan and Elliot Kaplan
Karl Janowitz and Amy Goldman
Alexa Josaphouitch
Phyllis Hochberg and Stuart Katz
Ora King
Jason and Jennifer Knudson
Marilyn and David Kraut
Kathy Krebs
Cyana La Divertida
Ruth Lesser
Dr. and Mrs. Michael and Phyllis Levy
Norman and Sylvia Lieberman
Daniel and Kathleen Lipinski
Michael MacFarland
Sharmain Matlock-Turner
John and Amy McCawley
Marge Neff and Dan Winterstein
Michael Norris and Matt Varrato
Susan Odessey
Michael Ogborn
Hannah Olanoff
Timothy O'Malley
Nancy Page
Ariel Parker
Matthew Pettigrew
Ronald and Pam Pontano
Adelina Porvaznik
David Pressel and Jill Feldman
Mike Pulsifer
Fernando Ramirez
Zuzana Rehm
Rachel and Robert Reilly
Alan Reinach and Dana Perlman
Alice Reyes
Marilyn Rife
E. Graham and Elizabeth Robb
Eve and Charles Robbins
Rosalyn K Robinson and
Warren B English
Franklyn and Cintra Rodgers
Bernard and Camille Rosenberg
Sid and Ruth Rosenblatt
Bryna and Andrew Scott
Amanda Shaffern
Kathryn Sheir
Stephanie Shepard
Genvieve and Clete Shields
Nancy Starrett
Maurício Saavedra and
Joanna Sykes-Saavedra
William Penn Foundation
Michael Ward
Rosalyn and Stephen Weinstein
Marlene Weinstein
Michael R. White
Dilys Winegrad
Richard and Diane Woosnam
Hope Yursa
WHYY

IN-KIND SUPPORTERS

1812 Productions
3rd Street Hardware
Lisa Altman
Atlantic City Boat Rides
BalletX

Benjamin Lovell Shoes
Ian and Ryane Nicole Beutler
Blokes Barbershop
& Gentelman's Emporium
BloodMilk Jewels
Bristol Riverside Theatre
Camden Adventure Aquarium
Bob and Cheryl Carfagno
The Chamber Orchestra of
Philadelphia
Cheltenham Center for the Arts
City of Philadelphia Mural Arts Program
Cocktail Culture Company
Crayola Experience
Cuba Libre
Delaware Theatre Company
Michael A. and Edward C. Donato
Diane's Patisserie
Earthly Delights, LLC
Fairville Inn
Donna Faye
Flex All Day
Flint Hill Farm Educational Center
Fork
Grounds for Sculpture
Historic Philadelphia, Inc.
InterAct Theatre Company
Jenkintown Building Services
Phyllis Hochberg
King George II Inn
Lakshmi Hair Studio
Michael LeWitt
Longwood Gardens
Lovely Bride
The Mann Center for the
Performing Arts
Michael MacFarland
Peter McQuaid
Peggy Morgan
Moore Brothers Wine Company
Morris Arboretum & Gardens
Museum of Illusions
National Liberty Museum
Old City Photo Booth
Kate Nelson
Paddy's Pub
PECO
People's Light Theatre Company
Philadelphia Ballet
Philadelphia Independents
Philadelphia Museum of Art
The Philadelphia Orchestra
Philadelphia Outward
Bound School
Philadelphia Union
Philadelphia Zoo
Plainfield Country Club
Jared E. Pontz
Renault Winery
Rittenhouse Grill
Charles Rose
Rosenbach Museum and Library
Genvieve and Clete Shields
Sioux Zanne Messix
Sonny's Famous Steaks
TD Bank
Theatre Exile
Theatre Horizon
The Dinner Detective
The Vault by Volpe Beringer
Walnut Street Theatre
Margaret Watson
Weavers Way Co-op
WideEyedStudios
Woodmere Art Museum
Ellen Yin

Corporate, Foundation & Government Support

\$100,000 & above

Hamilton Family Charitable Trust
Rosenthal Family Foundation
Shubert Foundation
William Penn Foundation
Wyncote Foundation

\$50,000 to \$99,999

Harold and Mimi Steinberg Charitable Trust
Harmelin Media
Independence Foundation
PA Department of Community and Economic Development

\$25,000 to \$49,999

Anne M. and Philip H. Glatfelter III Family Foundation
Comcast Corporation
The Horace W. Goldsmith Foundation
PECO Energy

\$10,000 to \$24,999

Anton Charitable Trust,
In Memory of
Frederick W. Anton III
Arcadia Foundation
Fox Chase Bank Charitable Fund
The Sylvia W. and
Randle M. Kauders Foundation
Lincoln Financial Foundation
National Endowment for the Arts
Penguin Young Readers+
Philadelphia Cultural Fund
PNC Charitable Trust —
Robert H. Reakirt Foundation
The Suzanne Roberts Cultural
Development Fund
TD Charitable Foundation
Truist
Univest Financial
Zeldin Family Foundation

\$5,000 to \$9,999

Civic Foundation
Cuba Libre+
Ethel Sergeant Clark Smith
Memorial Fund
The Haley Foundation
Janet Yaseen Foundation
Pennsylvania Council on the Arts
Philadelphia Activities Fund

\$2,500 to \$4,999

Charlotte Cushman Foundation
Christian R. and Mary F. Lindback
Foundation
Christopher Ludwick Foundation
Elliott-Lewis Corporation
Franklin Fountain+
Fringe Bar+
Hassel Foundation
Irene D. Cunningham Trust
Las Bugambillas+
The Lida Foundation
The Paul E. Kelly Foundation
The Plough and the Stars+
Positano Coast by Aldo Lamberti+
Republic Bank
TCF- The Community's Foundation
Virginia Brown Martin Fund of
the Philadelphia Foundation

\$1,000 to \$2,499

Alex J. Ettl Foundation
Barnes & Noble+
Bendita Foundation
BeneServ
Cafe Tolia+
Dolfinger-McMahon Foundation
Franklyn Rodgers Family Fund of
the Philadelphia Foundation
French Toast Bites+
Forsythia+
Global Atlantic Financial Group
Growth Counsel LLC
Hamilton Family Foundation
Khyber Pass Pub+
National Mechanics+
Race Street Cafe+
Rittenhouse Foundation
Royal Boucherie+
Sun East Foundation

Up to \$1,000

Actors' Equity Foundation
Bryn Mawr Presbyterian Church Choir
High Street Philadelphia+
The Pew Center for Arts and Heritage
The R. Andrew Swinney Presidential
Achievement Fund of the
Philadelphia Foundation
Quaker Printing+
Weavers Way Co-op+

Employee Giving, Matching Gift, Donor Advised Fund Partners

American Online Giving Foundation
AYCO Charitable Foundation
Bank of America
BillGO
Bristol Myers Squibb
Cadence Design Systems, Inc.
Charities Aid Foundation of America
The Chicago Community Foundation
Chubb
CIGNA Corporation
Comcast Corporation
Dun & Bradstreet
Equitable / AXA Foundation
Exelon Corporation
Fidelity Charitable
Friends of Education
Give Lively Foundation
GlaxoSmithKline
General Atlantic
Global Atlantic Charitable Gift Fund
Goldman Sachs
Google
Impact Assets
Independence Foundation
Jewish Communal Fund
Johnson & Johnson
JP Morgan Chase & Company
Macy's/ Bloomingdale's
McKinsey & Company
Microsoft
Morgan Stanley
Merck Foundation
National Philanthropic Trust
PayPal Giving Fund
PECO
Penn's Way
The Philadelphia Foundation
The Pledgeling Foundation
PSEG
Radion Group, Inc.
Renaissance Charitable Foundation
Sap America, Inc.
Schwab Charitable
Susquehanna International Group, LLP
T. Rowe Price
Thrivent Charitable Impact & Investing
United Way
Vanguard Charitable
William Penn Foundation

+ Denotes a gift of goods or services

This list represents gifts made
through August 25, 2024



The
Sylvan Society
Arden Theatre Company

Grounding the Present, Nurturing the Future

The Sylvan Society recognizes individuals who support the Arden's work by making annual gifts of \$1,000 or more.

The special generosity of our members enables the Arden to tell great stories by having the resources to achieve the highest level of artistic quality.

This list represents gifts made through August 25, 2024

Chestnut Grove (\$25,000 and above)

Lois G. Brodsky
The CHG Charitable Trust
Nancy and Bob Elfant
Kate Groark-Shields
Michael Grove
Alta and N. Peter Hamilton
Joanne and Jon Harmelin
Jessica Phelan
Monica and Philip Rosenthal
Lee and Chris van de Velde
June and Steve Wolfson

Sassafras Grove (\$10,000 - \$24,999)

Christina and David Fryman[^]
Elizabeth Gemmill
Terry and Ann Marie Horner
Robert and Risa Lavizzo-Mourey[^]
Peggy Morgan and Patty Bowman
Charles Rose
Harvey B. Swedloff

Cherry Grove (\$5,000 - \$9,999)

Anonymous
Richard and Kathleen Aregood
Charles Arnao and Rosemary Watt[^]
Rayenne Chen
Anne Cook and Russ Troyer
Ann E. Diebold
Deb Dorsey and Mike Green
Elisabeth Erlbaum
Stephen Falchek and John Offidani III
Richard Harris
Eileen Heisman and Marty Tuzman
Jim and Carolyn Hessinger
Robin and Saifuddin Mama
Alexis and Ed Pappas
Tom Petro and Kris Messner
Ceth and Sam Plum
Rosalyn K. Robinson and
Warren B. English

Bernard and Camille Rosenberg
Sid and Ruth Rosenblatt
Sharon and Irv Shapiro
Hether and Don Smith
Rosalyn and Stephen Weinstein
Nancy Brent Wingo
Hope Yursa

Filbert Grove (\$2,500-\$4,999)

Brian Abernathy and Elizabeth Ireland
Brett and Nan Altman
John and Amy Bitman
Bob and Cheryl Carfagno
John and Fern Culhane
Joy De Jesús and James Reynolds
Robert M. Dever
Michael A. and Edward C. Donato
Laura Drake
Shannon and Ted Farmer
Elizabeth Fernández-Viña~
Jill Fisch and John Gassenheimer
Linda and David Glickstein
Jennifer Harmelin
Ed Hillis and Audrey Cohen
Peter* and Louise Kelly
Kenneth Klothen and
Eve Biskind Klothen
William A. Loeb
Janice Madden
Michael Mallee
Barb and Don Matheson
Amy Murphy and Terry Nolen
Joel and Bobbie Porter
John and Claire Rodgers
Marilyn and Hank Royfe
Keith and Jim* Straw

Mulberry Grove (\$1,000-\$2,499)

Anonymous (6)
Hank Adamczyk and Iris Melendez
Becky and John Adams
Diane Alessi

Stan and Lisa Altman
Winifred Anderson and Eric Lien
Stephen S. Arms and Jennifer J. Arms
Bethany Asplundh
Jim and Janet Averill
Rhonda Ball
Sheryl and Allen Bar
Sheila Bell
Jay and Nancy Berkowitz
Linda and Mark Bernstein
Bill and Brenda Bertrand~
Sandy and David Beswick
Ian and Ryane Nicole Beutler
Dr. Regina Blaszczyk and Lee O'Neill
Louis Bluver
Viola W. Bostic
DeDe and Tony Brown
Ann and David Brownlee
Vicki and Russ Carlson
Karl Carter
Christopher and Jeffrey Carver
Cordelia Clement
Barbara Cobb
Marc and Margie Cohen
Kelly Colarelli[^]
The Susan Lavine
Coleman Charitable Fund
Gregory L. Coleman
Rebecca Davis and Mark Hoffman
Ellen Deacon~
Tobey and Mark Dichter
Carol Eicher
Jonathan and Nancy Ellsworth
Lisa Fair and Bryce Quayle
Paul and Judy Farber
Mr. and Mrs. Farenback-Brateman
Donna and Norman Faye
Jeanne B. Fisher and Robert F. Lang
Carole M. Foley
Dieter and Sara W. Forster
Ellen and Tim Foster
Sandi Foxx-Jones
Lou and Rhoda Fryman,
In Honor of David Fryman
Julie and Tom Gennaro

Terry Graboyes
 Kelly Gratten and John Lopez~
 William and Joan Greenfield
 The H and R Feinberg Family
 Foundation
 David C. and MaryJane Hackney
 Ann and Glenn Haig
 Anne Halkedis^
 Ellen and Steve Harris
 Hon. Lillian Harris Ransom
 Dr. Valerie Harrison
 Don and Lynn Haskin
 Janis Hawes and Patrick Cunningham
 Charles W. Head Jr. and
 John A. Faggotti
 Heidi Hertfelder^
 Steve* and Jane Heumann
 Karen and Mark Hite
 Deborah Hluchan
 Phyllis Hochberg and Stuartz Katz
 Diane Hofer
 Rachele and Ron Kaiserman
 Margie and Scott Kasner
 Holly Kinser
 Carol Kelley
 Steven Klein
 Peter J. and Sandra Klugman
 Steven Knepper
 Thomas and Anne Kohn
 Bernadette Koller
 Valerie Koscelnik
 Marilyn and David Kraut, In Honor
 Of Amy Murphy and Terry Nolen
 Deborah R. Kravetz and Bill Robling
 Cyana La Divertida
 Mr. Robert Leventhal and
 Ms. Cheryl Getty
 Michael MacFarland
 Richard Maimon and Susan Segal

Lee Marks and Lisl Zach
 Linda McAleer
 John and Amy McCawley^
 Kathy McMaster
 Peter and Laura McQuaid, In Honor
 of the amazing Arden Theatre Team
 A.C. Missias
 Chloe Mohr
 Leslie and Michael Molder
 Adam Mussell and Kate Whittington
 Marge Neff and Dan Winterstein
 Kathleen Nelson and John Kromer
 Arnold and Shelley New
 Mary Ivy and Roger Noone
 Michael Norris and Matt Varrato
 Susan Odessey
 Barbara Oldenhoff
 Robert Overell and Lisa Glasser
 Don and Barbara Parman
 Ronald and Pam Pontano
 Maya Ponte and Benji Eichberg
 Laura and Douglas Pratt
 David Pressel and Jill Feldman
 Daniel Promislo
 Rachel and Robert Reilly
 Alan Reinach and Dana Perlman
 Alice Reyes
 Joy Rickabaugh
 E. Graham and Elizabeth Robb,
 In Honor of Lee van deVelde
 Franklyn and Cintra Rodgers
 Jane A. Rose, CPA/PFS
 Mike Salmanson and Tobi Zemsky
 Gisèle Sambar Bathish
 Becky Sassi
 Geoff Schmidt and Marie Wong
 Kim and Ross Schmucki
 Ellen Schwartz and Jeremy Siegel
 Terri Schwomeyer

Kathy Sernak
 Genvieve and Clete Shields~
 Roy and Lee Shubert
 Laura and Ron Siena
 Paulette Singleton
 Gayle and David Smith
 Kathy and Don Smith
 Valerie Smith^
 The Spector Charitable Trust
 Rudy Sprinkle and Andrea Barsevick
 Mike and Shannon Stellato~
 Kathleen A. Stephenson
 Robert and Sydney Stevens
 William K. Stewart, Sr. Foundation
 Stephen and Kathy Thompson
 April J. Tvarok, In Honor of Class 9
 Thomas and Dawn Weiss^
 Allison Weissman,
 In Honor of Bebe Maritsis
 Caitlin Wood and
 Martha Schoolman~
 Richard and Diane Woosnam
 Ellen Yin+
 Beth Zatuchni and Jerry Satlow~
 Tom and Jackie Zemaitis

* Denotes a deceased supporter
 + Denotes a gift of goods or services
 ^ Includes a matching gift
 This list represents gifts made through
 August 25, 2024

THE LEGACY SOCIETY

Arden Theatre Company would like to recognize the following supporters who have included the Arden in their wills or estate plans. Their planned gift provides support which will help sustain the Arden's work for decades to come.

Anonymous
 Ms. Peggy Anderson*
 Stanley Baurys*
 Ivy Bayard*
 Jane Berryman
 Louis Bluver
 Mary P. Burr
 Pearl M. Carpel*
 Larry S. Friedman* and
 Dean H. Rishel
 Ellis Ginsberg*

Peter Gistelinck and Kim Bloom
 Grace Goglewski and
 Eric Schoefer
 Gary R. Grob*
 Kelly Gratten and John Lopez
 David C. and Mary Jane Hackney
 Jim and Carolyn Hessinger
 Suzanne and James Hill
 Alan and Nancy Hirsig*
 Mary Ellen Krober

DawnLynne Kacer and Family
 William Loeb
 Donald Martin and Richard Repetto*
 Peggy Morgan
 Tom Petro and Kris Messner
 Kristen Phillips and Matt Schreck
 Renee E. Polsky*
 Madeline Portnoy
 Irene M. Reiter*
 Dr. Harry Rosenthal
 Marilyn and Dean Staats

We hope you will consider including the Arden in your will or estate plans. To be recognized as a member of the Legacy Society or with questions regarding planned giving, please contact Jessica Abel, Director of Development, at 215.922.8900 x149.

ARDEN CHILDREN'S THEATRE

PETER PAN

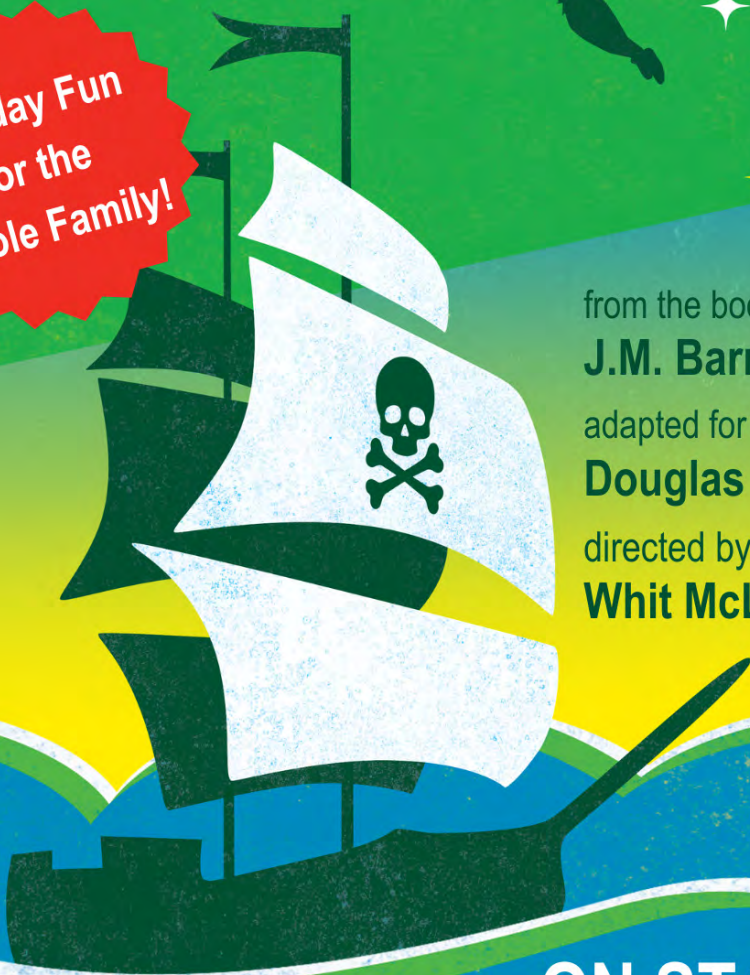


Holiday Fun
for the
Whole Family!

from the book by
J.M. Barrie

adapted for the stage by
Douglas Irvine

directed by
Whit McLaughlin



ON STAGE
NOV 27 - JAN 19

TICKETS



ardentheatre.org

Thank You to Our Supporters

\$500-\$999

Anonymous
Jerry Abelson and June Idzal
Sally and Michael Bailin
Eddy and Myra Bell
Ms. Reid Bodek~
Carol and Allen Bonner
Beth Burrell and David Sorensen
Karen Cheney
Carol Cook
Warren D. and Kaye L. Crown
Kathy Duffy
W.Wallace and Joanne Dyer
Jonathan V. Edmondson^
Epstein Family Charitable Trust
John Erickson and Harry Zaleznik
Paula Fuchsberg
Dan Gannon
Janet-Lynn Garrabrant
Joseph and Jane Goldblum
Tanya Gordon
Ben and Jody Graff
Paul D. Green
Rhoda Harrison
James Hinrichs
Diane L. Hlywiak, Esquire
Glenn Holsten
Jane Kamp and Thomas Lloyd
Janice King
Holly and John Kleimo
Catherine Klinger Klutcher
Sarah Kloss
Jane S. Kramer
Mary Ellen Krober
Ruth and Peter Laibson
David Lerman and Shelley Wallock
John and Melissa Lore
John and Martha Lubell
Mary Ellen Marzullo
Brendan May and
Mary Kate McGrath-May
Michael McArdle
Barbara McCleary
Julie Meighan+
Vicki Meitus
Susan and Alan Miller
Joann Mitchell
Sandra S. Mock
Jackie Morrill and Mike Donahue
Shannon Mullican and
Kurt Schillinger
The Norman Family
Mr. Joe Norton
Sue and Tom O'Donnell
Shellie Peters
Claire and Lud Pisapia
Janet and John Poth
Paul Rabe and Cheryl Gunter
Susan and Steve Reisbord
Kurt and Mary-Ann Reiss
Rachel R. Reynolds
Robin Rifkin and Michael Silverman

Daniel and Faye Ross,
The Ross Family Foundation
Dan Rothemel and
Michael Hairston
Mauricio Saavedra and
Joanna Sykes-Saavedra
Larry and Carol Segal, In Honor of
Susan Segal's Birthday
Joseph Shaffer^
Polly Shaffer
Thomas Sherman and
Nancy Middlebrook
Stanton and SaraKay Smullens
Barbara and Robert Stewart
Susan and Jim Strohman
Bruce and Nancy Urbschat~
Lewis and Hella Volgenau
Donna and Andrew Wechsler

\$250-\$499

Stuart Adair
Anthony Agati
Janet Alwang
Marilyn and John Anthony
Bree Archambault
Sandra Axelrod
Sylvia Baker
Cynthia and George Barth
Wilma Bass
Ellen Baxter and Robert Kavash
Carol Beam
Patricia G. Beck
Thomas Bender
Gretchen Bender
Mr. David Berch
Sara and Bruce Berger
Timothy Berger and Sarah Mooers
Ruth Berman
Charlotte H. Biddle
Fern and Bob Billet
Barbara Bisgaier
Linda and Alden Blyth
Janice Bogen
Miriam Bowerman
Dr. Stephen Bulova and
Eleanor W. Bulova
Ms. Monika Burke
Sabra Cameron
Chip Capelli, In Honor of
Amy Murphy
Arlene Cessna
George and Barbara Chalmers
Leah Chaplin and Eileen Gildea
Edward Chiginsky
Annemarie F. Clarke and
David L. Buch
Diane and Patrick Close
Deborah Co
John Coleman
Mary Coleman
Janet and Richard Conn
Janet Cook

Susan Cook and Jeff Staikoff
Betty Cooper
Carol Copland
Mary Jo Courey
Jill, Hank and Katie Croft
Hillary and Gene Curran
Cynthia D'Ambrosio
Paul Danifo
Nancy DeLucia
Marla and Andrew Diamond
William Diebold and
Deborah Freedberg
Robert Dinardo
Stuart and Diana Donaldson
Angela D'Orsi and Dean Beer
Barrie duBois
Jeff and Michelle Eichen
Sally and Stewart Eisenberg
Anne Ewers
William and Anne Ewing*
Norma A. Fabian
Antionette Farrar Seymour
Cheryl and Steven Feil
Mark and Rene Feitelson
Victoria Ferguson
Ed Fink
Jay Finestone and Randy Jill Schwartz
Victoria Ferguson
John and Nancy Fischer
Jacqueline Foldesy
Kimberly Foster^
Allan P. Freedman and Amy
Rappaport
Paul Friedman
Tong Ming-Fu
Brenda Furtak
Bernadette Gallagher
JJ Garcia and Charlie Dreisbach^
Jesus Garcia
Joel R. Gardner and Holly A. Phelps
George and Dona Garrettson
Janet Ginzberg and John Caskey
Rena and Henry Goehl
Ilse Goldfarb
Jay Goldstein
Joyce Goodman
Eileen and Norman Gray
Rita Greenfield
Trudy and Paull Gutterman
Marlane and Harvey Guttmann
Henry and Joyce Halpern
James* and Patricia Haney
Caroline Harries
Carol Hauptfuhrer
Dan and Monica Hilferty
Terry Hirshorn
Leonard and Audrey Hoffman
Michael J. Hozik and Margaret L. Rea
Jim Hutchison and Nanci Ritter
Dave F. Huting
Meghan Ignatosky^
Jennifer Jenkins

Thank You to Our Supporters

Kenneth Foster and Mary Jenkins
DL Kacer
Philip* and Marge Kalodner
Phyllis Kauffman
Douglas and Ruth Keating
Susan Kellogg and Dick Hoffman
Michael and Marie Kenis
Kate Kidder
Stephen Kieran
Megan Kiesel
Paul R. Kleschick III
David Knowlton and Diane Zompa
Ellen Kurtz
Joyce Laskin
Andrew and Lynn Lees
Drs. Bob and Joyce Leonetti
Ruth Lesser
Anna Levinger and
Bree Lowdermilk
Natalie Levkovich
Edward Lundy and Debra Reiff
Cirel and Howard Magen
Kathleen Mahan
Ruth Mandelbaum
Murray Margolit
Michelle McFarlane
Jeffrey Minehart
Eric Moss

The Kathleen J. Moyer
Charitable Fund
Paul Nutaitis and Robert Clark
Deb Olley and Brian T. Murphy,
In Honor of Deb Dorsey
and Mike Green
Tim O'Malley
Linda Osler
Fred Ott
Robert Ourach
Kimberly C. Oxholm and
Carl Oxholm III
Mr. Larry Pace
Michael and Judy Paul
Ms. Doris Peltzman
David and Amy Pollack
Sandy Portnoy
Ilene and Coleman Poses
Nick and Peg Potalivo
Gail and Jerry Raznov
Eleanor and Joseph Reinhardt
Mr. and Mrs. William H. Rivers, Jr.
Edward and GERALYN Rock
Robert L. Roessler
Maxine Romano
Shelley Rosenberg
Sue and Hal Rosenthal
Anthony Rostain

Adelle Rubin
Amy and Mitch Russell
Suzanne Ryan
Suzanne and Kip Salus
Marilyn Sanborne and
Richard J. Labowskie
Rita Schaefer
Nancy Scharff
Karen Schermerhorn and
Evan Seymour
Carl W. Schneider
Perlita and Frank Schorfheide
Bonnie Schorske
Jackie Schroder
Lauren and Daniel Schwartz
Lawrence and Carol Segal,
In Honor of Richard
Dan and Hanna Shapira
Elaine Sherman
Jim and Cathy Shippen
Diane Silverhardt
Amanda Spann
Virginia Spykerman
Emily Steiner
Elsie Stern and Steve Cohen
Rita and Neil Stevens
Elan Strominger
Edward and MaryAnn Tierney



Get closer to the artistic work



Ensure arts access to children in
Greater Philadelphia



Enjoy an engaged community of theatre
enthusiasts!

Become a Sylvan Society Member

With an annual donation of **\$1,000 or more**, Sylvan Society members are the roots that keep the Arden grounded and stable, while allowing our people, programs, and purpose to grow and thrive.

By joining our community of leadership donors you'll enjoy concierge services, exclusive access, and recognition for a full year.

Join the
Sylvan Society or
learn more here:



ardentheatre.org/sylvan

To learn more, please contact Orelí Uzdavinis at
215.922.8900 x131 or ouzdavinis@ardentheatre.org

Thank You to Our Supporters

Matthew Tom
Adrienne Topic
Margaret Evans Tuten
Bryan Ulishney^
Richard Urbani
Carol and Paul Vahlstrom
Judith Voet
Mark Wade
David Warshal
Marlene Weinberg
Vivian Weinblatt
Abigail Wolf and Jonathan Weiss
Judith L. Wellington
Caroline West
Doris A. Williams
Jim and Jean Wilson
Linda Witt
Linda Wood
Sue and Eric Woolf

\$125-\$249

Anonymous (8)
Judy Aaron
Rhoda Abrams
Lawrence and Patricia Abramson
Thomas Achenback
Eleanor Adam
Barbara Adams, In Honor of
Susan Segal's Birthday
Estelle Alexander
Michael Allen
Jenys Allende
Virginia Alpaugh~
Helene Amster
Melba Axelrod
Camille Bacon-Smith
Nelson Bagby
Esther Balkin
Theresa Bambino
Charlene and Keith Bance
Cecily Banks
Theresa Baraldi
Judy Barbush
Ronald Barras
Robert and Sandy Clay Bauer
Fred Baurer
Susan Becker and Aaron Rubin
Amy Brantz and Edward Bedrick
Jennifer Bell
Sue Bentson
Claire and Joseph Berger
Donald and Sheryl Berger
Marcie and Robert Berke
Frank Bernard
Sandy Betner
Barry and Marilyn Bevacqua
Bill Bissell, In Honor of
Arden Theatre Box Office Staff
Barbara Black
Mr. and Mrs. Larry and Joyce Bloom
Nathan Blum and Barbara Rolnick
F. William Bogle

We are proud to support

Arden Theatre Company

HARMELINMEDIA

More than forty years of
transforming advertising.

More than forty years of
supporting the arts.

harmelin.com

Ernest Bollin
Elizabeth Bond
Gwen Borowsky
Nicholas Bosshardt
Helen Boyle
Michael P. Boyle
Lorena Broesamle
Barbara Bromfield
Katherine Brown
Sarah Campbell
Vincent Cancro and
Donna Davenport
Chester Allen Carson
KC Casey
Avigail Caspi Lebovic
Caroline M. Castagno
Margaret and Phillip Cavanaugh
Anne Chain
Kamesh Challuri
Maureen Charnitski
Mr. Joseph Chaya
Barbara Citerone
Tawny Clark
Mary Cochetti

Gert Cohen
Howard Cohen
Everod Coleman
Michael Coleman
Rick and Carol Collier
Kristina Collins
Gina Collier
Janet Connor Love
Donna Cordner and Brent Groce
Gladys Corrodi
Barbara Cortese
Joan Countryman
Michael and Nancy Crawford
Alexander Curtin
Joseph and Helen D'Angelo
Todd and Christine Darr
Anne Davenport
Katherine Davies
Bill Davis and Lisa Handler
Emily L. Davis
Nancy and Ken Davis
Robert and Bonnie DeAngelo
Francis de Regnaucourt
Emilia Demarco

Thank You to Our Supporters

Teri Dicesare
Rhonda Dickey
*George F. Koch, Jr. and
Santo A. DiDonato
Susan Dinan
Jeanne Doherty
John Doherty
Joseph and Virginia Dominic
Joanne Donahue
Lucille Schlack Drake
Judith Drasin
Laura Duffy
George Dvorak
Robert Earle^
Michael Edelman
Anne Egan
Linda Ellsworth
Carole Epstein
Edmund and Judy Erde
Ted and JoAnn Erfer
Morgan Everitt
Adelaide Ferguson and Ron Cahan
George Feuer
Gene Fiducia
Diane and John Fitch^
Judy Flander
Judy and Hal Fliegelman
Donald Foote
Alan Freed
Elyce Freedman

Paulette Freeman
Brenda Freitag and Chet Tuthill
Douglas Frenkel and
Marlene Weinstein
Maryanne Noel and Philip Friedman
Phil and Carol Fuoco
Suzanne Gallagher
Ray Didinger
Miriam Galster
Ofelia Garcia
Susan Gasteyer
Greg Gephart
Scott and Lynda Glading
Joan D. Gmitter
Dick Goldberg
Daphne Goldman
Diane and Frederic Graboyes
Marianne and Donald Green
Adele Aron Greenspun
Rick Greenstein and Claudia Tesoro
Celeste Griffith
David and Myra Gutin
Joanne Halscheid
David and Janice Haman
Elizabeth Harman
June Hament
Tahirah Harrigan
Beverly Hayden
Elizabeth Heller-Mesznik
Susan Herron

Les and Mary Heselton
Wendy and Steve Hess
John and Marcia Hiehle
Thelma Hilibrand
Margaret Hill
Richard and Barbara Hirsh
Maryl and William Hitchings
Johnnie Hobbs
Alexa Hogarty
Robert Holland
Esther and Robert Hornik
Edward Hoy
Geraldyn Humphrey
Jill Huntley Taylor
Thomas Hurster and
Jacqueline Salmon
Dave Ingram
Peter and Nora Hunt-Johnson
Maurice Johnson
Jeanette Johnson
Bruce Joss
Glenn Kalina
Barbara and Leslie* Kaplan
Karen Kaplan^
Anne Kasprinski
Steven Kavanaugh
Colleen Keith
Brian Kennedy
Cindy Kesselman

Announcing 2024/25 YOUNG FRIENDS NIGHTS!

The Arden's Young Friends series offers theatregoers ages 40 and under access to \$30 tickets, a preshow reception, and an exclusive Q&A.

POTUS

October 3, 2024

INTIMATE APPAREL

November 21, 2024

HOLY GRAIL OF MEMPHIS- World Premiere!

February 13, 2025

KING HEDLEY II

March 28, 2025

RENT

June 5, 2025

Make new connections,
dive deeper into theatre, and
experience Old City's rich food scene.

Learn More



Thank You to Our Supporters

Julia Kharlip, In Honor of
The Lehman Trilogy Production

Rachel Kipnes
Cheryl and John Kirby
Laura Kirby
Brian and Caren Kirschner
Charles Klaniecki
David Klein
Ken, Eva, and Aaron Klein
Susan Kleinman
Lora Kline
Jerry and Deena Koffler
Michele and John Koskinen
Gregory Koutnik
Christine and Matt Kozsuch
Vicki and Don Kramer
Richard G. Krassen
Louis Krause
Maureen Krueger
Denise A. Kuhn
Barry and Janet Kushner
Roman and Melaku Lakew
Medita Laville
William Lederer
GeorgeAnn T. Lenard
Susan Levin
Darlene Levin
Ely and Sarah Beth Levine
Arlene Liebman
Norman and Sylvia Lieberman
Mary Lee and Bill Lieser
Lisa Linder and Richard Grossman
Victoria Lipoff
Laurel and Robert Lipshutz
Brian Litt
Audrey Litto
Kathryn Loitz
Jacqueline Loli
Greg Lord
Howard R. and Jennifer Lurie
Susan and James Lytle
Richard and Scotia MacRae
Theresa Mader and David Suter
Dan Maier
Miriam Mandell
Joseph M. Manko
The Mantione Family
Moshe Margolin
Barbara J. Marshall, In Honor of
Barbara Marshall
Deb Martin
Sharmain Matlock-Turner
Ken and Margery Maurer
George and Judy McCarthy
William McCauley
Particia McCole
John McCormick and Ken Schmitt
Alice McCreary and David Epler

Gavin McCullion
Dagmar McGill
Kathleen McGrann
Virginia Mcintosh
Louise McLeod
Becky McMahan
Lorraine and Bruce McMahan
Arthur and Sallie Melvin
Adrienne Mendell
Allyson Mercer
Mary and Robert Metrione
Cheryl and Gerald Meyer
Barbara Miller
Frances Miller
Sandra and Martin Miller
Michael Milone
Dale Mitchell
Mary Fran Moeller
Jen and Jonathan Molod
Florence Momplaisir
Valerie Mond and Ed Nowak
Gina Moore
Calibous Moskowitz
Mary Mullarkey
Sandra Murray
Ken and Sue Myers
Stephanie Naidoff
Ann Marie Nasuti
Marissa Neale
Heather Neff
Helen Newbold
Claiborne Newlin
Karen Nice
Etta and Charles Nissman
Frances Novack
William Norton
David and Monda Noyes
Alan Oberman
Judith O'Dell
Grace O'Dowd
Nora O'Dowd
Patricia Ogiony
Jim Ortega
Abbey Owens
James Pabarue
Susan Lee
Alan and Bryna Paston
Teresa Peterson
Kristen Phillips and Matt Schreck
Deborah Pines and Carl Perchonock
Martha Platt and Marlis Kraft
Lois and Paul Plotnick
Alma Plummer Marshall
Jeffrey and Elizabeth Podraza
Theodore Politis
Victoria Pratt
Dr. Tom and Candace Pratt
Antoinette Pressman

Ruth Prushan
Aneira Puttaswamy
Joel Quast
Pamela Quinn
Mark and Karen Reber
Stanley and Rita Reichlin
Mary Jo Reilly
Susan and Steve Reisbord
Judith Richter
Barbara Rice
Gary and Robin Risler
Marjorie Risman
Cathy Robinson
Mrs. Deborah Robinson
Renee Rollin
Lou and Laura Romano
Tracy Romans
Carey and Robert Roseman~
Richard and Anne Rosenberg
Hal and Sue Rosenthal
Edwin and Sally Rosenthol
Libby Rosof and Murray Dubin
Richard Ross
Diane Rossheim
Barbara Rubel
James Rush
William Russell
E. Ruth Sachs
Bill and Joan Saidel
Sandra Sborofsky
Barbara Schaffer
Les Schlessinger
Carolyn Seplow and Adam Bailine
Marvel Shmiefsky
Jill and Kerry Schuman
Mark and Nancy Schure
Evelyn and Harold Schwartz
Elena Selina
Hermene Shapiro
Irving Shapiro
Stacie Shepard
Iris Shifftan
William Shoff
Mel and Susanne Shuster
Paul Siegel
Marilyn Sifford and Robert Butera
Robert and Harriet Singer
Rebecca Sinkler
Arnold Skolnick
Helen Smeltzer
Harriet Smith
George R. Smith
Walter Sobon
Jeffrey Sorkin~
Patrick Sorrells
Rudy Spraycar
Marilyn and Dean Staats

To join the *Sylvan Society* or for more information on how you can support the Arden, please contact Orelí Uzdavinis, Manager of Individual Giving, at 215.922.8900 x131 or ouzdavinis@ardentheatre.org

Thank You to Our Supporters

Megan Staples Jacob, In Honor of
Amy Murphy
Michael Stelle
Margaret Stein
Steven Stern
Sarah Stitzer
Catherine Stock
Gaynor Strickler, In Honor of
Anne Cook
Daniel Szyld and Kathleen Ross
Dr. Dolores Szymanski
Linda R. Tabas
Kenneth Tartof
Sylvia and Frank Tarzanin
Maxwell Thoeni
William Thomas
Thomas Thompson
The Tobias Family
Gina Tomkowich
Elizabeth Townsend
Marian Tracey
Linda Traver
Jane Trentacoste
John Urofsky
Darrell Velegol
Tom and Patricia Vernon
Alec Vidal
Lorine Vogt
Deborah Volkmer
Sandra Vondeling
Ann Walker
Patrick and Kathleen Walsh
Bo Wang
Tom and Beth Warms
Ellen Wasserson
Melinda Watts
Linda Waxler
Shelly and Fred Weiner
Renee Weisband
Bebe Weiss
Lenore Weissberg
Rashida Wellbeck
Suzanne L. Weston
Anne Wittkamp
Leon and Phyllis Wolf
Hon Wong
Robert Woodcock and
Sally Leiderman
Jodie Yanno
Barbara Yorke
Dina Zimbaridi
Pamela Zitta
Heidi Zod

\$75-\$124

Anonymous (7)
Anonymous, in Honor of
Betsy Oliphant Ross (2)
Lawrence Abel
Eileen Abel
Carole Abercauph

Diane Ajl
Hilary Alger
Peter Allen
Barbara Amstutz
K. Anderson
M. Faith Angell
Jay Anstee
Patricia A. Armitage
Nancy Atchison
Rosalie August
Dr. Rita Axelrod
The Babilonia Prunés Family
Cecil Baker
Pam and Earl Ball
Rebecca Baranowski
Janine Barbara
William Barcklow
Marlene Bareiss
Joseph Bartman
Carolyn and George Bassett
Terry Bayer, In Honor of
Jackson and Gavin, our Grandsons
Oksana Baydina
Frances and Michael Baylson
Richard and Eileen Bazelon
Jim Becker
David Behrend
Michele Bennett
Livia Berardi
Irene Berkowitz
Connie and Dick Berman
Estelle Blaustein
Amy Bleakley
Jocelyn Block
Thomas Boghosian
Linda and Andy Borson
Iris Boshes
Marcia Bower
Amy Bowers
Hazel Bowers
Cythia Boyd
Erin Boyle
Brian Boyle
Virginia Brabender
Stanton and Jill Braid
Karen Bramblett
Joseph and Mary Lou Breidenstine
Terrence Brennan
Jennette Brian
Julianne Brienza
Eadie and Allan* Brooks
Kathleen Brooks
Ted and Susan Broom
Robert Brophy
Doris Broudy
Patricia C. Brown
Elijah Brown
Cathy and John Bryck
Michael P. Buckley and Mason Barnett
Joanne Burak
Nora Burrridge

Peter and Miriam Buswasser
Dorothy E. Byrne
Francis and Mary Calter
Virginia* and Samuel Cameron
Anthony and Jaque Camp
Andrea Caniglia
Carolyn Cannuscio and Daniel Rader
Stephen Capadona
Larry Carlin
Lise and Dick Carr
Mr. Keith Case
Joseph Casey^A
Debbie and Allan Casnoff
Lillian and William Cassel
John Cella
Stuart Charme
Kathy Chase
Janet Cherry
Ed Chew
Susan Chisholm
Emily Cieri
Ivor Clark
Karen Clark
Tom Clark
Helene Cohen
Judy Cohen
Beth Cohen
Jacquelyn Cohen
John Collett
Barbara Collier
Peggy Conver
John Cooke
Dr. Cynthia Cooke
Sarah Cooper Searight
Elizabeth Cornman
B. Karen Coyne
George Craig
Heather Crane
Sarah Crawford
Marie Cruz
Veronica Cuccinotta
Barbara and David Curtin
John Dale
Ms. Dorothy Dalton
Barbara A. Daneluzzi
Cheryl Dannenbrent
Benjamin D'Annibal
Beth Darrow
Gilbert Davis
Susan Davis
Thomas and Eileen Davis
Ms. Elizabeth Deegan
Paul Deigendesch
Catherine Del Duca
Cordelia and Don Delson
Michelle R. Denburg
Nancy and Nishan Dersimonian,
In Honor of Clayton Tejada and
Arden Front of House Team
Kathleen Detreux
Judy Dinn

Thank You to Our Supporters

Alan and Fran Domers
David Donaldson
Frank and Sara Donnelly
Bill Dooley
Rosanna Dorazio
Alexander Dragovich
Daniel Drexler
Robert and Renee Dubin
Carol Dudnick
John Dulik and Sandra Folzer
Marian Duncombe
Alice Dungan
Faith Edelman
Richard Egan
Larry Eichel
Susan Ellenberg
Selma Ellis
Jason and Jennifer Ellsworth-Aults^
Dr. Beverly Emanuel
Linda Emerick
Karen Ernst
Alan Ettenson
Dorothy Evensen
Sonja and Thomas Eveslage
Susan Extein and Lucy Hyatt
Anne and Steven Fassler
Lona Farr and David Voellinger
Cari Feiler Bender and Rodd Bender
Winifred Fessenbecker
Jeff Filipkowski
Jill Fink
Leila Finkelstein
Cindy Fishman^
Pamela Fisk
Sarah Flook, In Honor of
 Betsy Oliphant Ross
Tamara Forstater
Kathleen Foster
Abbe Fox
Irene Frangatos
John and Elaine Frank
Alexandra Frank
Ms. Judy Frank
Allyson J. Frank
Diane Frankel
Susan and Paul Frederic
Barbara Freed and Alan Mittelman
Rebecca Freedman
Fran Freedman and Job Blum
Paulette Freeman
Martha Friedman
Martin Friedman
Marie Fritzinger
Abraham Gafni
Dr. Stephen and Ardith Garland
Lisa Gates
Jenna Gavaletz
Charles Gear and Anna Lee Morgan

Marguerite Geiger
Mary Geisz and Keith Pryor
Coeli Genter
Eric Gerstel
Gwen and Alvin Gilens
Marylouise Gladish
Philip and Karen Glick
Ms. Etta Glickman
Marion Goldberg and Paul Keller
Brian Goldsmith
Heather Golin
Jacqueline Gonatas
Bob and Jan Goren
Marie Gottschalk
Rick and Sharon Graham
Phillip Graneto
Joshua Grant
Victoria and Duncan Grant
Donna Grasson
Ellen Greco
Alan and Sara-Ellen Greenberg
Jonathan Greene
Kaitlin Gregory
Adam Gress
Stephen Griffey and
 Melinda McGough
Frances Grubb
Joanne Guarnieri
Dan Gutierrez
Mr. Mark Haas
Bobbie Halpern
Teresa Hanssens
Teresa Hanssens
Mary Kate Harkins
Jessica Harms
Barbara Harris
Russell Harris
Shelley Harris
The Harris Ketterer Family
Carol Harrison
Palmer and Judith Hartl
Libby Harwitz and
 Burton Blender
Susan Havens-Lang
Jenn Hayden
Kenneth Heings
Patrice Heller
Irene Hempstead
Stuart Henderson
Karen Hennes
Angela and Michael Hennessey
Don Henry
Abe Henry
Trudi and Irv Herman
Dr. William Herring and
 Mrs. Patricia Herring
Leigh Ann Hewston
Kirsten Hickerson

Barbara Hilgen
Mershon Hinkel
Mrs. Elizabeth Hollinger
Hollie and James Holt
Dr. David O. and Patricia Holtz
Marie Horchler
Dr. Mindy and Jay Horrow
Caren and Stuart Hosansky
Chris Hoyler and Bob Jackson
Lynda Hubbell
Michelle Hudson
Kevin Hunt
Ellen Huyett
Evelyn Rosen
David and Sylvia Jacobs
Greg Jaffe
Dr. and Mrs. William Jantsch
Rebecca Jarosh
Stacey Jarrell
Rosemary and Ejner Jensen
Leah Johnson and Damien Suqarrell
Daniel Johnson
Phyllis Jones
Warren Joseph
Edward Kahn
Lisa Kahn
James Kaib
Ellen Kaplan
Patricia Kapur
Dr. Rhonda Karp
Judy Kastenbergl
Mimsye Katz
Lucy Kaufman and Matt Lockwood
Jennifer Kay
Joyce Kay
Chris and Bridget Kelleher^
Frances and Paul Kende
Megan Kennard
Barbara Kessler
Toni and Herbert Kestenbaum
Robert and Susan Kettell
Christina Kind
Jay and Bebe Kivitz
Marlena Kleit
Rita Klinger
Veronica and Gary Klocek
Margaret Klock
Barbara Klock
Lorraine Kobeski
Theodore and Amy Kokas
Ellen Kopeland
Judith Kornfeld
Alysa Krain
Nassya Kravevska-Owens
Shira Kramer
Dr. Hillary Kruger
Will Kumpas
Christopher Kurtz

Look around. Want to reach this audience? Advertise in our upcoming stagebill.

For more information on custom packages, please contact Michel at mmazno@manzomediagroup.com
or Kim at richards@manzomediagroup.com

Thank You to Our Supporters

Daniel Lai
Andy Lamas and Ginny Vanderslice
Lois Landis
John Landreau and Sherri Grasmuck
Joan Lapayowker
Melanie LaPenta
Sigrid Larson
Martin and Hannah Laufe
Alexandria Leitao
Joe Leonard
Maria Lerman
Howard and Susan Levinson
Michael L. Levitan
Rafael Levites
Madeline Levy
Bella Lewensohn Schafer
Joanne Lewis
Missy Lide, In Honor of
 Betsy Oliphant Ross
Patricia Lima
Barbara Lincow
Daniel and Kathleen Lipinski
Linda Litwin
Armando Llanes
Nadine Lomakin and
 Michael McPhilly
Deborah and Albert Lorenz
Robert Losick and Linda Nash
Nancy Ludgus
Melissa Lukach
Robert and Patricia Lynam
Colleen W. Marano
Bob and Sue Ann* Marburg
Linda and David Marder
Terry Ann Marek
Mary and Jack Markov
Randi Marrazzo
Jane Martin
Linda Martin
Nancy Martin
Robert McCarthy
Patrick McDonald and Martine
Combal,
 In Honor Of Betsy Oliphant Ross
Elizabeth McDons, In Honor of
 Betsy Oliphant Ross
Chris McDowell
Vicki McGarvey
Margaret E. McGovern
Brian McGraw
Kim McKnew
John McMillan
Donette McPoyle
Andrea D. Meals
Meryle Melnicoff
Jackie Meltzer, In Honor of
 Betsy Oliphant Ross
Mark Mendenhall
Faith and John Midwood
Joyce and Mark Miller
Danny Miller

Lina Minicucci
Ann Mintz and Clifford Wagner
Laurent Moe
Melinda Montanaro
Brad Moss and Laurie Gottlieb,
 In Honor of Harvey Swedloff
David N. and Laurel S. Mosteller
Geraldyn Moyer
Theodore and Theresa Munz
Joyce Murphy
Judith Nagle
Linda Naskret
Mara Natkins
Debbie Neibauer
Pamela Nelson
Hillary Nelson
Paula and Lawrence Ninerell
Marta Nolan-Alley
Amy Norr
Daniel and Jeannette Norris
Lora Northern
Hannah Olanoff
Margaret Olson
Jenna Olszak
Jeanne Omans
Hugh O'Neill
Nicole and James Onesti
Shawn Orr
Julie and Eric Orts
Stanton S. Oswald and Phyllis Weber
Douglas L. Overtoom
Natasa Pajkovic
Michael Palazzo
Blair Pallas
Deborah Panagacos, In Honor of
 Betsy Oliphant Ross
Antonio Paola
Brian Parker
Emelie Passow
Anne and Ted Patterson
Alisa Peet
Kristen Perlman
Marthenia Perrin
Belinda Peterson
Bill Pfeifer
Anna Phillips
Karen Piercy
Lucille Pilling
Jaye Pinch
Ronnie Pleet
John and Victoria Podolski
Amy Polis
Steven Portman
Brian Rath
Timothy and Joyce Ratner
Paul and Ellen Rawicz
Matthew Reddin
Abi and Craig Reed
Kathleen Regan
Krista Reichard
Erin Reilly

Ms. Mary Reinhart
Rosemarie Retacco
John and Virginia Rice
Kenneth Richman
Dana Ridley
Jacqueline Riedel
Elisa Riesenbach
Fran Rissmiller
Marjorie Robbins
Eve and Charles Robbins
Robert Robinson
Bonnie and Len Romberg
Barbara and Anthony Rooklin
Beverly Rosen
Martin and Carol Rosenblum
Dean Rosencranz
Alexis Rosenfeld
Ellyn Rosenfeld
Nina Rossi
Maggie and Jay Ruane
Edward and Elizabeth Rubenstone
Bernard and Barbara Ruegauer
Janice Saibel
Desiree Salera
Robin Sampson
Katherine Sanderson
Vicki Sarnoff
Vicki Satinsky
Matteo Scammell
Karyn L. Scher
Jordan Schilling
Jane Schloss
Linda Schneider
Patty Schoelkopf
Robert Schwartz
Gail Scott and
 Thomas D. Quinlan
Patricia Scott Hobbs
Hideko Secrest
Henry Seigel
Annilee Seitchick
Deniz Selman
Kathleen Senkow
Karen and Bob Serenbetz
Gioia Sharp
Sandi Sherr
David W. Sharp
Wendy and Matthew Shilling
Laura Shook
Hedvah Shuchman
Donald and Marilyn Silberberg
Debbie Silver
Eunice Silver
Caroline Simon
Ms. Karen Singer
Judith Skillings
Carlene and David Slowik
Dennis Raymond Smeal
Ariana Smith
Bruce and Penny Smith
Colleen Smith

DONATE TODAY TO SUPPORT YOUR ARDEN THEATRE

We're made stronger by YOU—our Arden Family—who have been making live theatre a priority for more than 35 years! But did you know that **only 50% of our costs are covered by ticket sales?** We rely on your generosity to fulfill our mission and help to bring bold stories to life.

Will you add your support by making a donation? With your donation, you:

- Invest in Philadelphia theatre professionals
- Empower new voices on our stages
- Support arts access for children in Greater Philadelphia
- Advance the Arden's education work in city schools
- Uplift stories that entertain, illuminate, and inspire audiences of all ages

MAKE AN ANNUAL CONTRIBUTION

Annual donations help us to support everything from keeping the lights on to paying our performers and staff, to putting books in the hands of our young audiences.

BECOME A MONTHLY DONOR

Join our donor community as a monthly donor with a recurring gift. This consistent support provides core financial stability to help us sustain our daily work throughout the season.

JOIN OUR SYLVAN SOCIETY

With an annual contribution of \$1,000 or more, you can join our Sylvan Society and enjoy special perks throughout the year, including invitations to Opening Nights, donor receptions, and behind-the-scenes programming!

BECOME A SPONSOR

Business and individual sponsors deepen their impact with dedicated support of one of our on-stage, education, or outreach programs. Sponsors can receive a range of visibility and hospitality benefits while providing important financial resources to deepen our reach and impact.

EITC GIVING

Is your company approved for the Pennsylvania Educational Improvement Tax Credit (EITC) Program? The Arden is an EITC-eligible Educational Improvement Organization! When your corporation gives to our Arden for All educational programming, it receives a dollar-for-dollar tax credit.

MATCHING GIFTS

Your company may double your impact with a matching gift! Please contact your company's Human Resources department to learn if your giving is eligible for a match.

IN-KIND GIVING

Make a gift of in-kind support towards or season or one of our many special events.

LEAVE A LEGACY

Make the Arden part of your will or estate plans to leave a deep and lasting impact for future generations.

You can make your donation online, by mail, or by phone. We also accept Gifts of Stock, and donations made through your IRA, Donor Advised Fund, or other Qualified Charitable Distribution. To learn more or make your donation:

- Visit <https://ardentheatre.org/support>
- Mail your check payable to "Arden Theatre Company" to 40 N. 2nd St., Philadelphia, PA 19106
- Contact Jessica Abel, Director of Development, at JAbel@ardentheatre.org or 215.922.8900 x149

Thank You to Our Supporters

Joseph Smith
Kathleen Smith
Wayne Snover and Janet Tebbel
Robert Snyder
The Snyder Family
Emily Soloby
Vicki and Evan Solot
Heather Speirs
Margaret R. Spencer
Pamela Spiller
Gary E. Stahl and
Deborah S. Stahl
Dionne Stanfield
Konnie Stark
Ms. Naomi Starobin
Paul Steinberg
Jerry Steiner
Dr. Christina Stasiuk^
Joel and Barbara Stewart
Louise and David Strawbridge
Fred Stuart
Kathleen Sullivan
Elizabeth Svenson
Gary and Betty Szatkowski
Cheryl Taddei
John Tarves
Elizabeth Taylor
Sandra Telep
Letty Thall
Hannah Thomas
William Thompson

Cinnamon Tinsley
The Tobias Family
Charles Todd
Bill and Patti Toner
Elizabeth Torres
Richard Trama
William Travis
Janize Ulzheimer
Carol Usonis
Carol R. Vahlstrom
Heather Van Horn
Valeria Vasilevski
Cynthia L. Vena
Larry Viezel
Frank and Carol Vita
Jonathan Waller
Carolyn Walter
Thomas Wand
Ellen Watson
Jacqueline Weber
Harri Weinberg
Taube and Sam Weinberg
Margo Weishar
Carol Weisl
Kate Weiss
Sharon Wellons
Liz Welsh
Shannon Welsh
Leslie and Ellen Welson
Beverly Werner Caplan
Carol Ann Wesh

Gary Whitley
Robert C. Wickline
Howard Wiener
Carol Williams
Kendal Williams
Dora and Oscar Wilsker
Laura Windham
Angela and Michael Winterrowd~
Marcia Witlin-Basickes
Arnold Wolf and Fern Tablin
Sam and Kuna Yankell
Brian and Marion Young
Loretta Young
Chris Young
Julie Zaffarano
Marc and Pam Zisselman
Esther Zoblin
Jennifer Zwetolitz

* Denotes a deceased supporter
+ Denotes a gift of goods or services
^ Includes a matching gift
~Includes a monthly gift
This list represents gifts made through
August 25, 2024

FORK

LUNCH BRUNCH & DINNER



306 MARKET ST PHILA | FORKRESTAURANT.COM

Thank You to Our Supporters

Gifts in Memory Of...

ALFONSO ANDRADE

Gabriela Andrade

JUDY BARBUSH

Christine and Matt Kozsuch

TOM BEAM

Carol Beam

MARY ELLEN CONABOY

Barrie duBois

ERNEST CUFF

Ellen Deacon

MARJORIE DICKEY

Rhonda Dickey

JERRY E FREEDMAN

Sherri Freedman

LEONA E. GRAHAM

Rick and Sharon Graham

JAMES J. HANEY III MD

Anonymous (4)

Sherri Becker

Christopher Bradie

Hillary and Gene Curran

Beth Darrow

Janice Dathe

Alan and Fran Domers

Frank and Sara Donnelly

Bill Dooley

Ann Marie Fritz

Coeli Genter

Rosanne and Bob Grant

Joanne Halscheid

The Harris-Ketterer Family

Jennifer Heist

Dr. William Herring and

Mrs. Patricia Herring

Michael Johnson

Amy Kiraly

Madeline Levy

Geralyn Moyer

Deborah and Albert Lorenz

Brett Murphy

Norman Family

Sue and Tom O'Donnell

Maggie and Jay Ruane

Barbara Rubel

Scott and Maria Schaffer

Lindsay and Pete Seelig

Bill and Patti Toner

Karen and Frank Ulmer

Frank and Carol Vita

Carol Ann Wesh

Richard Wesh and Family

LUCKY HERTFELDER AND SHARON CLAUSON

Heidi Hertfelder

DR. STEPHEN KAY

Dr. Rhonda Karp

MARY C. KEENAN

Kara Keenan Sweeney

MILT AND ROZ KLEIN

Ken, Eva and Aaron Klein

JOHN KOSCELNIK

Valerie Koscelnik

SHEILA KUTNER

Dr. Beverly Emanuel

SUE ANN MARBURG

Bob Marburg

MOXIE MCCUTCHEON

Celestine Silverman

MIRIAM NORRIS

Daniel and Jeannette Norris

KRISTIN OSGOOD LAMELAS

Diane Hlywiak, Esquire

GEORGE AND DOLORES OTTINGER

Stephen and Kathy Thompson

RICHARD REPETTO

Dan Rothermel and

Michael Hairston

ANNIE RICHARDSON

Anonymous

JILLINE RINGLE

RM Perdick and LB Smith

JULIAN ROSTAIN

Anthony Rostain

GEORGE R. SZYMANSKI, ESQ.

Dr. Dolores Szymanski

GERI TALLONE

Scott and Lynda Glading

ASTER WAMSER

Polly Shaffer

SAMUEL WEINBERG

Taube and Sam Weinberg

DEBBY YODER

Paul and Andrea Downie

CASEY ZEFF

Eileen Heisman and Marty Tuzman

Gifts To Named Funds...

NAMED SEATS THIS SEASON

Kelli Hargreaves

Phil and Michelle Hatfield

ANDREA MENGEL FUND

Derick Dreher

Independence Foundation

Susan Sherman

ANN B. MCNAMEE

FAMILY THEATRE FUND

Dennis and Louise Buckley

Dennis and Melissa Rodkin

Robert and Joan McLaughlin

THE BRODIE FAMILY, IN HONOR OF DR. MAMA'S RETIREMENT

The Brodie Family

THE DR. MINDY GOLDBERG ROSE INTERNSHIP FUND

Nancy and Bob Elfant

Equitable/ AXA Foundation

Charles Rose

Heidi and Mitchel Rubin,

In Honor of Nathan Dorman

Dorothy Sheridan

THE BERNARD AND CAMILLE ROSENBERG FAMILY THEATRE FUND

Bernard and Camille Rosenberg

Board and Committee Members

Board of Directors

Michael A. Donato, *President*
Rayenne Chen, *Vice President*
Rhonda Ball, *Vice President*
Michael S. MacFarland, *SVP, Treasurer*
Richard L. Maimon, *Secretary*
Kelly Colarelli
Anne Cook
Robert Elfant
Nancy Elfant
Elizabeth A. Fernández-Viña
Elizabeth H. Gemmill
Jennifer Harmelin
Richard Harris
Valerie I. Harrison
Ann Marie Horner
Holly Kinser
Dr. Saifuddin T. Mama
Amy L. Murphy
Terrence J. Nolen
Hon. Rosalyn K. Robinson
Charles H. Rose
Monica Rosenthal
Genvieve Shields
Lee van de Velde
Steve Wolfson
Diane Dalto Woosnam
Ellen Yin

Board Executive Committee

Michael Donato, *Chair*
Michael MacFarland
Rhonda Ball
Rayenne Chen
Robert Elfant
Jennifer Harmelin
Dr. Valerie Harrison
Holly Kinser
Richard L. Maimon
Genvieve Shields
Lee van de Velde

Finance Committee

Michael MacFarland, *Chair*
Juan De León Domenech
Ellen P. Foster
Ann Marie Horner
Dan Hilferty
Daniel Krewson
Eliza Orleans
Harvey Swedloff
Steve Wolfson

Board Development Committee

Rayenne Chen, *Chair*
Valerie Harrison, *Chair*
Michael Donato
Robert Elfant

Board Development Committee (cont.)

Holly Kinser
Saifuddin T. Mama
Lee van de Velde
Diane Dalto Woosnam

Personnel Committee

Rhonda Ball, *Chair*
Michael Donato
Elizabeth H. Gemmill
Richard Harris
Michael S. MacFarland
Charles H. Rose

Engagement Committee

Jennifer Harmelin, *Chair*
Genvieve Shields, *Chair*
Lee van de Velde
Anne Cook
Elizabeth Fernández-Viña
Nancy Elfant
Camille Rosenberg
Hope Yursa

Facilities Committee

Richard L. Maimon, *Chair*
Mike Green
James Kronzer
John J. McCawley

Facilities Committee (cont.)

H. Hetherington Smith
Chris van de Velde

Equity, Diversity, and Inclusion (EDI)

Rayenne Chen
Anne Cook
Joy L. De Jesús
Robert Elfant
Kash Goins
Richard Harris
Dr. Valerie Harrison
Zuhairah McGill
Amy L. Murphy
Bi Jean Ngo
Terrence J. Nolen
Hon. Judge Rosalyn Robinson
Clayton Tejada
Orelí Uzdavinis

Young Friends Committee

John Connolly
Elizabeth Fernández-Viña
Kathleen Johnson
Alexa Josaphouitch
Meredith McGovern
Jenny Morrison
Aby Rodriguez



all you need is fresh flowers

WWW.NEFLOWERBOUTIQUE.COM
NORTHEASTFLOWERS@GMAIL.COM
@NE_FLOWER_BOUTIQUE

OLD CITY
(267)570-7707
60 N 2ND ST

NE PHILLY
(215)437-1913
11702 BUSTLETON AVE

NE FLOWER BOUTIQUE
www.neflowerboutique.com

Staff

Artistic	Producing Artistic Director.....	Terrence J. Nolen
	Associate Artistic Director.....	Jonathan Silver
	Artistic Assistant.....	Nick Hatcher
	Commissioned Playwrights.....	Kash Goins, Robi Hager Rogelio Martinez, Iraisia Ann Reilly
Administrative Management	Managing Director.....	Amy L. Murphy
	General Manager.....	Clayton Tejada
	Business Manager.....	Paola Cruz
	Audience Services Manager.....	Tanner Richardett
	Facilities and Office Manager.....	Larry Brooks
	Arden Professional Apprentices.....	Abby-Jeanne Ruger, Ashley Austin, Haley Hartline, Ian Gaskin, Malena Rivera, Zycara Jones
Marketing	Director of Marketing and Communications.....	Mike Hogue
	Marketing Manager.....	Erika Byrnison
	Communications Manager.....	Aseal Saed
	Publicist.....	En Route Marketing
	Marketing and Group Sales Associate.....	TJ Harris
Development	Director of Development.....	Jessica Abel
	Manager of Individual Giving.....	Orelí B. Uzdavinis
	Development Coordinator.....	Tylar Benedetto
	Development Associate.....	Rodrick Edwards
Education	Director of Education.....	Jessica Sawyer
	Education Outreach Manager.....	Josh Thorps
	Drama School Manager.....	Elise D'Avella
	Teaching Artists.....	TJ Harris, Campbell O'Hare, Brennen Malone, Jessica Money, Julianna Babb, Cindy Paul, Andrea Rose Cardoni, Danny Walsh, Francine Odri, Marie McVeigh, Ella Kahan, Katie Hahn, Zoe Hollander, Katherine Perry, Adam Howard, Charis Duke, Eliana Fabiyi, Eliana Pinckney, Gina Giachero, Jake Collins, Jordan Hunter-Fidalgo, Lexi Schreiber Nadia Ra'Shaun, Tanaquil Marquez, William Daniels
Front of House	Box Office Manager.....	Jason Blacketer
	Assistant Box Office Manager.....	Amanda Adams
	House Manager.....	David Demnicki
	Front of House Associate.....	Ryn Bondi
	Front of House Assistants.....	Adiah Hicks, Becky Fleckner, Catey Midla, Chelsey Gaskins Emily Hernandez, Erica Lowry, Glynnis Nadel, Jenny Glickman, Laura Duffy, Mads Klemm, Margaux Cattelona, Morgan McNulty, Skyler Gonzalez, Syaera Cort, Will Vence Jr.
Production	Production Manager.....	Kate Nelson
	Technical Director.....	Evan Lewis
	Assistant Technical Director.....	John Winter
	Charge Scenic Artist.....	Kristina Chadwick McGrath
	Electrics Supervisor.....	Martin Stutzman
	Sound Supervisor.....	John Kolbinski
	Costume Supervisor.....	Stephanie Shaw
	Properties Supervisor.....	Shane Dreher
	Production Assistant.....	Kylen Bailey
	Assistant Stage Manager.....	Chloe Kincade
	COVID-19 Safety Managers.....	Clayton Tejada, Jonathan Silver
	Electricians.....	Colin Lang, Heather Pynne, Meghan Moore
	Electrics Programmers.....	Isabella Gill-Gomez
	Carpenters.....	Luis Feliciano
	Wardrobe Supervisor.....	Ryn Smith
Deck Crew.....	K.C. Casey	
Stitchers.....	Amanda Carano	

CREATIVE REAL ESTATE FOR CREATIVE PEOPLE



Happy Clients

Charlie DelMarcelle
Barrymore Award
Winning Actor
Katherine Fritz
Costume Designer



BENJAMIN CAMP

REALTOR® & CCSJ Team Leader
Actor & Producer



JAMES SUGG

REALTOR®
Actor & Sound Designer

The CCSJ Team is proud to continue our *Support the Arts Initiative*, donating to local performing arts organizations for every closing. Whether you're on-stage, behind the scenes, or in the audience, choose the REALTOR®s who support our arts community.



Contact
Benjamin



📞 610.220.8550
📧 ben@ewrhomes.com



Contact
James



📞 267.303.2827
📧 sugg@ewrhomes.com

215.893.9920

THESTELLARCHOICE.COM | ELFANT WISSAHICKON
2000 PINE ST, PHILADELPHIA, PA 19103

Elfant 
Wissahickon
- REALTORS® -