

ARDEN THEATRE COMPANY

# ONCE ON THIS ISLAND

Lyrics and Book by  
**Lynn Ahrens**

Music by  
**Stephen Flaherty**



**Arden**  
THEATRE CO.

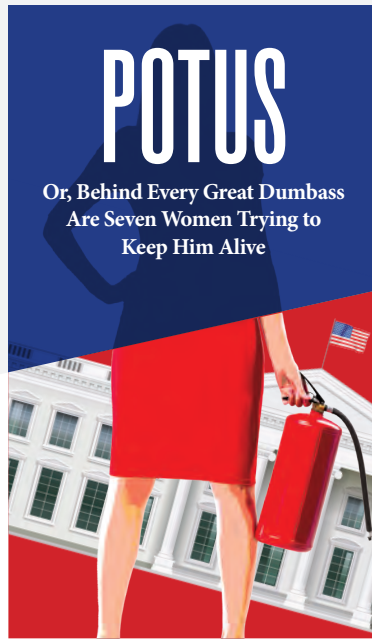
**MAY 16 – JUN 16**  
On the F. Otto Haas Stage

Honorary Producer:  
**June and Steve Wolfson**

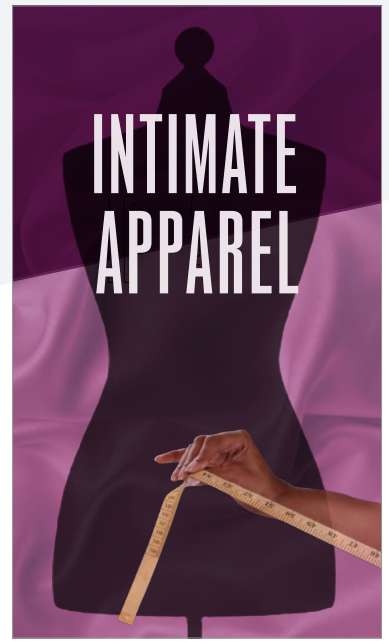
# 2024/25 SEASON

To subscribe:  
Go to [ardentheatre.org](http://ardentheatre.org),  
call [215.922.1122](tel:215.922.1122),  
or visit our box office

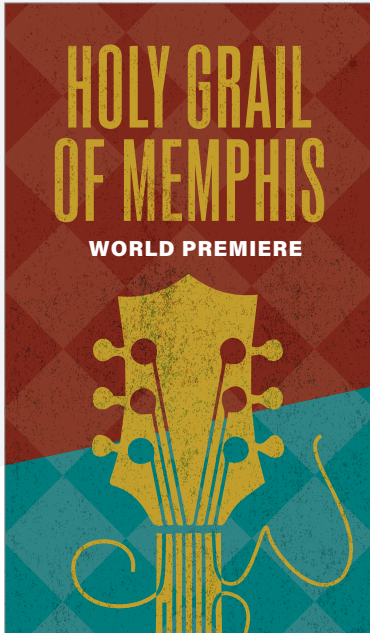
**Subscribe  
and SAVE  
up to 40%!**



By **Selina Fillinger**  
Directed by **Jennifer Childs**  
Sept. 12–Oct. 6, 2024



By **Lynn Nottage**  
Directed by **Amina Robinson**  
Oct. 24–Dec. 1, 2024



By **Michael Hollinger**  
Directed by **Terrence J. Nolen**  
Jan. 16–Feb. 23, 2025



Directed by  
Pulitzer Prize-winner  
**James Ijames**  
Feb. 27–March 23, 2025



Music, Lyrics, & Book by  
**Jonathan Larson**  
Directed by **Terrence J. Nolen**  
& **Steve Pacek**  
May 15–June 8, 2025

ARDEN THEATRE COMPANY

# ONCE ON THIS ISLAND A Musical

Book and Lyrics by  
LYNN AHRENS

Music by  
STEPHEN FLAHERTY

Based Upon The Novel "My Love, My Love" by Rosa Guy

Set Designer  
DAVID P. GORDON+

Costume Designer  
LEVONNE LINDSAY+

Lighting Designer  
ALYSSANDRA DOCHERTY+

Sound Designer  
ELIZABETH ATKINSON

Music Director  
GINA GIACHERO

Choreographer  
DEVON SINCLAIR

Assistant Music Director  
JAY ROSEN

Assistant Director  
MARIAH GHANT

Assistant Stage Manager  
LYNDSEY CONNOLLY \*

Stage Manager  
ALEC E. FERRELL\*

Directed by AMINA ROBINSON

---

Honorary Producers: June and Steve Wolfson

Originally Directed and Choreographed on Broadway by Graciela Daniele  
Playwrights Horizons, Inc. Produced ONCE ON THIS ISLAND Off-Broadway in 1990  
Originally Produced on Broadway By The Shubert Organization, Capital Cities/ABC, Inc.  
Suntory International Corporation and James Walsh, In Association with Playwrights Horizons

ONCE ON THIS ISLAND  
Is presented through special arrangement with Music Theatre International (MTI). All authorized performance materials are also supplied by MTI. [www.mtishows.com](http://www.mtishows.com)

Any video and/or audio recording of this production is strictly prohibited



Arden Theatre Company receives state arts funding support through a grant from the Pennsylvania Council on the Arts, a state agency funded by the Commonwealth of Pennsylvania.



+ Member of United Scenic Artists  
Local USA 829

\* Member of Actors' Equity Association,  
the Union of Professional Actors and  
Stage Managers in the U.S.



^ The director is a member of the Society  
of Stage Directors and Choreographers,  
Inc., an independent national labor union.

# A Message from our Honorary Producers



It is our pleasure to support the Arden Theatre Company this season as Honorary Producers of *Once on This Island*. We have been patrons of the Arden for almost as long as it's been around, and we are proud to support live theatre with our attendance, philanthropy, and through Steve's leadership on the Board of Directors. No matter if it's a large or intimate production, a new commission, or a staple of the classic canon, we appreciate Arden's ability to breathe fresh life into the work they produce.

We particularly wanted to sponsor this show because it is a play that captures the healing power of storytelling – which makes it perfect for the Arden, whose mission is all about telling great stories. *Once on This Island* is centered on the timeless themes of belief, identity, and love. Layered in are the timely issues of a community struggling with natural disaster, race and class prejudice, and colonialism, with a gorgeous score and exuberant theatricality that will leave you feeling the full spectrum of emotions. We hope you'll be transported, moved, and energized by this production! Enjoy the show!

## June and Steve Wolfson

---

# ACCESSIBILITY SERVICES

---

The Arden complies with all applicable federal, state, and local statutes and laws to ensure accessibility to individuals with disabilities who visit our theater. We invite you to visit [ardentheatre.org/plan-your-visit/accessibility](http://ardentheatre.org/plan-your-visit/accessibility) for more details about our services and offerings.



### Accessible Seating & Seating Requests

Removeable seats for wheelchairs & Accommodations for comfort, mobility, & hearing or vision needs



### Assistive Listening Devices (ALDs)

Amplification of all onstage sounds. Ask Box Office to borrow. Available with headphones or a t-coil neck loop.



### Open Captioning (OC)

Text display of all dialogue and sounds. Available select Friday & Saturday performances.



### Audio Description (AD)

Live verbal commentary of all visual elements. Ask Box Office for access. Available select Friday & Saturday performances.



### \*NEW!\* Smart Caption Glasses (SCG)

Wearable, customizable closed captioning glasses. Available 1 week after Opening Nights. Ask Box Office to borrow.



### Large Print Programs

Enlarged-text printed programs for low-vision patrons. Ask Box Office to borrow.



### Shadow American Sign Language (ASL) Interpretation

Live ASL interpretation shadowing the action of the show. Available at select Children's Theatre performances.

We encourage any feedback and suggestions regarding our accessibility services to ensure we're doing the best we can. Please contact Tanner Richardett, Audience Services Manager, at [trichardett@ardentheatre.org](mailto:trichardett@ardentheatre.org)

# WELCOME

## From the Producing Artistic Director



Welcome to *Once on This Island*!

As we celebrate the end of this season with this joyful production, we are busy making plans for next year (and if you are asking, “What is next season?” check out the inside cover of your stagebill). Our 2024/25 season represents the wide range of work we seek to share with you on our stages: the Philadelphia premiere of a raucous new comedy; an intimate drama by Lynn Nottage, whose play *Clyde’s* was such a hit for us last season; a new play by beloved Philadelphia playwright Michael Hollinger; our sixth production of August Wilson’s monumental American Century Cycle, set against the backdrop of 1980’s Pittsburgh; and an immersive production of the groundbreaking musical *RENT*. We are hiring designers, holding auditions, and are thrilled to be welcoming back an extraordinary group of directors – Jennifer Childs, Artistic Director of 1812 Productions and director of *What the Constitution Means to Me*; James Ijames, director of August Wilson’s *Gem of the Ocean* and winner of the 2022 Pulitzer Prize for Drama for *Fat Ham*; Steve Pacek, a triple threat Philadelphia theatre artist who performs, choreographs, and directs; and Amina Robinson, director of *School Girls*, *Spelling Bee*, and the show you are about to see today. How wonderful to be collaborating with these extraordinary storytellers who have shaped and continue to help lead the way for what Philly theatre can be!

Join us for next season. If you have already subscribed, thank you! If you haven’t, think about becoming a subscriber. Whether this is your first time at the Arden or if you have been loyal subscribers since our very early days, thank you for being here today. Thank you for believing in the power and possibility of live theatre. The Philadelphia theatre community – and these brilliant artists who call Philadelphia home – need your support to continue to grow and thrive!

This production is dedicated to the memory of Joilet Harris-Lawton, the great Philadelphia actress and singer who died in 2022. We had the privilege of working with Joilet for over three decades, and she was scheduled to be in the Arden’s 2020 production of *Once on This Island*, which was cancelled when we were forced to shut down. Joilet made me promise that we would reschedule this show. As we keep that promise – and listen to this glorious cast fill this theatre with song – I remember Joilet’s unshakable faith, her deep generosity, and the power and beauty of her soaring voice.

Thank you for being part of the Arden.

# MUSICAL NUMBERS

"We Dance".....	(Company)
"One Small Girl".....	(Tonton, Mama, Little Girl, Storytellers)
"Waiting For Life".....	(Ti Moune, Storytellers)
"And The Gods Heard Her Prayer".....	(Asaka, Agwe, Papa Ge, Erzulie)
"Rain".....	(Agwe, Storytellers)
"Discovering Daniel".....	(Ti Moune, Storytellers)
"Pray".....	(Ti Moune, Tonton, Mama, Storytellers)
"Forever Yours".....	(Ti Moune, Daniel, Papa Ge, Storytellers)
"The Sad Tale Of The Beauxhommes".....	(Storytellers)
"Ti Moune".....	(Mama, Tonton, Ti Moune)
"Mama Will Provide".....	(Asaka, Storytellers)
"Waiting For Life - Reprise".....	(Ti Moune)
"Some Say".....	(Storytellers, Little Girl)
"The Human Heart".....	(Erzulie, Storytellers)
"Pray - Reprise".....	(Storytellers)
"Some Girls".....	(Daniel)
"The Ball".....	(Andrea, Daniel, Storytellers)
"Ti Moune's Dance".....	(Ti Moune, Grands Hommes)
"Andrea Sequence".....	(Andrea, Ti Moune, Daniel)
"Promises/Forever Yours - Reprise".....	(Papa Ge, Ti Moune, Erzulie, Storytellers)
"Wedding Sequence".....	(Asaka)
"A Part Of Us".....	(Mama, Little Girl, Tonton, Storytellers)
"Why We Tell The Story".....	(Company)

# ORCHESTRA

Garrett Davis.....	Percussion
Jack Denman.....	Synth 2/ Keys 2
Gina Giachero.....	Music Director/Conductor/Piano
Dan McCain.....	Bass
Will Mullen.....	Reeds
Alexa Vallejo.....	Guitar

# ARDEN **SUMMER** CAMP

For Kids and Teens

Action packed and taught by  
theatre professionals!

Learn more and register online at [ardentheatre.org](http://ardentheatre.org)



**"My camper had a blast!  
They came home every day ready to share about their day,  
and their creative thinking and expression  
blossomed throughout the week."**

**-Arden Summer Camp Parent**

# Director's Note



*Once on This Island* first came into my life by listening to the Broadway soundtrack many moons ago and enjoying the sweet tale of a young peasant girl, named TiMoune, who goes on a journey ordained by the gods to test the power of love verses death. Lynn Ahrens and Stephen Flaherty originally intended this musical to take place on “an island” in the French Antilles, loosely based on the history of Haiti. The story also was inspired and adapted from Rosa Guy’s novel, *My Love, My Love or The Peasant Girl*. However, in 2024 I find myself at a curious intersection in relation to life, art, and this tale of TiMoune.

Haiti is currently in turmoil. People are dying and gangs ruling the streets. The government is making attempts to reform. The people are suffering. Not ironically, these are a people who have an amazing legacy of defeating colonialist rule to govern themselves but have been plagued by external special interests which have undermined the power of the people, since.

I began to envision how I could take this piece and use it as a modern-day exploration of how communities reclaim and rebuild community from devastation. How the literal storm in the plot of *Once on This Island* becomes the more figurative “storm” of everything that is currently happening in Haiti. I wanted to explore how the story of TiMoune choosing the power of love over death can serve as an allegory for the Haitian people, who each day choose to use the power of love and community to combat the death and destruction that surrounds them. Moreover, how the power of the people when united can enact change and determine their own fates.

I had the distinct pleasure with speaking with an amazing Haitian woman named Regine during this process. I asked if there were any agencies we can support that provide real substantive aid to Haiti. I want my involvement in this production to serve as a platform for people who want to contribute to Haiti’s rebuilding and not destruction. If we perform the show, mustn’t we also honor the people whose legacy serves as the fodder for our entertainment? These are the questions I have grappled with, both artistically and personally. If you are so moved, please visit [ardentheatre.org/HaitiSupport](https://ardentheatre.org/HaitiSupport) for a list of Regine’s recommendations.

A handwritten signature in black ink, appearing to be 'ASJH'.



# Cast of Characters

Andrea.....	Sydney Banks *
Tonton Julian/Servant.....	Christopher Faison *
Little Girl (Ti Moune).....	Olivia Fowler
Asaka.....	Tiara J. Greene*
Papa Ge.....	Jessica Johnson *
Storyteller/Chorus.....	Taylor J. Mitchell *
Storyteller/Chorus.....	Eliana Pinckney +
Storyteller/Chorus.....	Jamie Powell
Ti Moune.....	Nadia Ra'Shaun *
Erzulie.....	Ryane Nicole Studivant *
Armand/Chorus.....	Miles Davis Tillman *
Daniel.....	Ethan B. Walker *
Agwe.....	Curtis Wiley *
Mama Euralie.....	Chabrelle Williams *

## UNDERSTUDIES

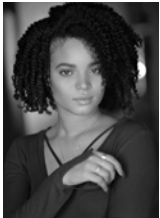
Charlie Barney (*Daniel*), Jayson Brown (*Storyteller/Chorus*), Jaida Buck (*Little Girl*), Chantel Cumberbatch (*Asaka*), Miranda Jo DeMott (*Andrea*), Alexis Goode, (*Ti Moune*), Curtis Harris (*Storyteller/Chorus*), Brennen Malone (*Agwe*), Imani Moss (*Papa Ge*), Cheyenne Parks (*Erzulie*), Monique Streey (*Storyteller/Chorus*), Joey Williams (*Armand/Chorus*), Camille E.Young (*Mama Euralie*)



Arden Theatre Company is a professional company employing members of Actors' Equity Association.  
 \*Member of Actors' Equity Association, the Union of Professional Actors and Stage Managers in the United States.  
 + Dance Captain

Please check houseboards for any program changes.  
 Taking pictures and/or making visual or sound recordings is expressly forbidden.

Actors' Equity Association (AEA), founded in 1913, represents more than 45,000 actors and stage managers in the United States. Equity seeks to advance, promote and foster the art of live theatre as an essential component of our society. Equity negotiates wages and working conditions, providing a wide range of benefits, including health and pension plans. AEA is a member of the AFL-CIO, and is affiliated with FIA, an international organization of performing arts unions. [www.actorsequity.org](http://www.actorsequity.org)



**SYDNEY BANKS** (*Andrea*) Arden debut. Regional: Assistant Director & Choreographer in *the ripple, the wave, that carried me home*, Ghost of Christmas Present/Martha/Belle u/s in *A Christmas Carol* (People's Light), Philoclea (Barrymore nominated for Outstanding lead in a musical) in *Head over Heels*, Sally in *TJ Loves Sally 4 Ever* (Theatre Horizon), Olivia in *Twelfth Night, O lo Que Quieras* (Delaware Shakespeare), Terri Scholes in *The Vertical Hour* (Lantern Theatre Company), Violet in *Covenant* (Arizona Theatre Company). Film/Television: Hope in *Toobie*. Education: University of the Arts, BFA in Musical Theatre. Sydney is a native of Baltimore, MD. Special thanks to the dedicated theatre company, the unwavering support of my family and friends, and the divine guidance of God, without whom none of this would be possible.

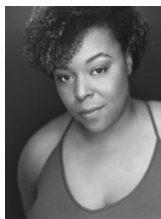


**CHRISTOPHER FAISON** (Tonton Julian/Servant) Arden debut. Creator and Star of *Here and Now: The Music of Luther Vandross*. Broadway: *Loverly Quartet* and *Freddy u/s* in *My Fair Lady* (Lincoln Center Theater). National Tour: *Loverly Quartet* in *My Fair Lady*; Court Clerk and Cornelius u/s in *Hello, Dolly!*; *The Book of Mormon*. Regional: Ken in *Smokey Joe's Cafe* (Phoenix Theatre); Judas in *Jesus Christ Superstar* (Seven Angels Theatre). Thank you family friends and fans. [www.christopherfaison.com](http://www.christopherfaison.com)



**OLIVIA D. FOWLER** (*Little Girl*) Arden Debut. Olivia is a 7th grader at C.W. Henry School, where she played Ti Moune in their production of *Once on This Island* last year. She is a member of Student Council, plays volleyball, has run in the Penn Relays, and is a recipient of the WHYY Youth Media Award. She has been taking ballet, tap, and jazz for 5 years. Great appreciation to my mom and dad for never giving up on helping me succeed.

# Who's Who



**TIARA J. GREENE** (Asaka) Arden: Witch (u/s) in *Into the Woods*. Regional: Sister Rosetta Tharpe in *ELVIS: A Musical Revolution* (Walnut Street Theatre); Felicia Farrell in *Memphis* (The Candlelight Theatre); Madelaine True in *The Wild Party* (Eagle Theatre); Jean Anne Ryan/Featured Ensemble in *Bandstand* (Playhouse on Park); Governor/Trish in *Bonnie & Clyde* (11th Hour Theatre Company). Education: Temple University, BA. Thank you to my family and friends for their continued support. A special thank you to Amina, Devon, Gina, and the rest of the Arden team for the chance to play a dream role. Instagram: @tbgreenesings www.tiaragreene.com



**JESSICA JOHNSON** (Papa Ge) Arden: Sarah's Friend in *Ragtime*; Jo in *The Legend of Georgia McBride*. Regional: Opal in *Fat Ham* (The Wilma Theatre); Kaila in *Step Mom, Step Mom, Step Mom* (Interact Theatre) Odessa in *Sandblasted* (Theatre Horizon); Gina in *a hit dog will holler* (Azuka Theatre, Barrymore Nominated); Celie in *The Color Purple* (Theatre Horizon, Barrymore Award for Outstanding Lead Performer); *Oleanna*, *Civil War Voices*, *It's A Wonderful Life: A Live Radio Play* (Walnut Street Theatre); *Trailus and Cressida* (Revolution Shakespeare); *Hope and Gravity* (1812 Productions); *The Swallowing Dark* (Inis Nua Theatre) Education: James Madison University. Love to my family and friends for their love and support!



**TAYLOR J. MITCHELL** (Storyteller/Chorus) Arden acting debut. Taylor J Mitchell is a multi-talent artist in the city who focuses on telling uplifting stories of her community and the future she wants to see. She serves as an actress, director, choreographer and more. Regional: Deborah in *Finding Freedom* (Museum of the American Revolution); Virginia in *Plum Bun* (EgoPo Classic Theater); Ensemble/Dance Captain in *Mary Poppins* (Quintessence Theatre Group); Deena Jones in *Dreamgirls* (Theatre in the X). Film/Television: Maxine in *Sisters* (Severine Pictures). Education: Alabama State University, BA. Special thanks to the Arden family, the cast and crew of *Once on this Island*, and to my Mom & Beyoncé, I do it for you!



**ELIANA PINCKNEY** (Storyteller/Chorus/Dance Captain) Arden debut. Regional: Ensemble in *Tuck Everlasting* (Centre Theatre); Leading Player in *Pippin* (Temple University); Education: Temple University Class of 2025, Musical Theatre. Special thank you to my mom and sister for supporting my dreams and to my teachers, family and friends for encouraging me to stay true to myself!



**JAMIE POWELL** (Storyteller/Chorus) Arden debut. Regional: Ensemble in *Elton John and Tim Rice's Aida and Oliver!* (Utah Festival Opera and Musical Theatre); Usher/God/ Understanding in *Everybody* (Temple Theaters); Boatswain/Ensemble/Caliban (u/s)/Antonio (u/s) in *The Tempest* (Delaware Shakespeare). Education: Baltimore School of the Arts, Acting; Temple University, Musical Theater. Thanks to my many educators who have shaped and molded me along the way to create the discipline and passion I have for the craft today, my close friends and family who have lifted me up when I needed it most, and my mother, who nurtured me and gave me the freedom to pursue what I love in a way I can never repay her for.



**NADIA RA'SHAUN** (Ti Moune) Arden debut. Tours: Asmeret, u/s Nabalungi in *The Book of Mormon*; Swing, u/s Little Inez in *Hairspray*. Regional: Viveca in *The Bubbly Black Girl Sheds her Chameleon Skin* (The Shirley Tyree Theater); Dionne in *Hair* (Nebraska Repertory Theatre). Education: Millikin University; University of Nebraska-Lincoln. Nadia is a proud member of Delta Sigma Theta, Inc., and an advocate for performers with chronic illness. To mom, Dustin, Q., and Lawrence, thank you for loving me so fiercely. To my amazing team at MSA, thank you for believing in me. Hi, John! @nadiarashaun nadiarashaun.com

# Who's Who



**RYANE NICOLE STUDIVANT** (Erzulie) Arden debut. After understudying many times (but never going on) and being a box office associate and house manager for years, Ryane is overjoyed to be making her mainstage debut. Regional: Mama Rose in *Gypsy* (Gretna Theatre), Church Lady in *The Color Purple*, Crystal in *Little Shop of Horrors* (Theatre Horizon), Jemima in *Galilee – World Premiere!* (Azuka Theatre), Mrs. Greene in *The Prom*, Store Manager in *Elf*, Gina in *Beehive*, Medda in *Newsies* (The Media Theatre). Thank you to Amina, Gina, Devon, Jonathan and Terry. Love and endless gratitude to my husband Ian and my family and friends. Dedicated to Joilet F Harris. TT/IG: @RyaneStud



**MILES DAVIS TILLMAN** (Armand/Chorus) Arden debut. Tours: Electric Skates in *The SpongeBob Musical* (First National Tour); Aaron Burr in *Spamilton* (National Tour). New York: *Arrowhead* (54 Below). Regional: Prentiss in *Peter and The Starcatcher* (Delaware Theatre Company); Aaron Burr in *Spamilton* (Casa Mañana Theatre); Ensemble in *Mamma Mia!* (Axelrod Performing Arts Center); Ensemble in *Mamma Mia!*, Reuben in *Joseph and the Amazing Technicolor Dreamcoat*, Daniel in *Seven Brides for Seven Brothers* (Bigfork Summer Playhouse). Education: Indiana University-Bloomington, BFA Musical Theatre. Thank you Mom, Dad, and Chelsea for keeping me pushing! @cptmilesdavis



**ETHAN B. WALKER** (Daniel) Arden debut. Regional: Doctor/Sergei in *Matilda: The Musical* (Garden Theatre); Pepper in *Mamma Mia!*, TJ in *Sister Act*, Angel in *RENT* (The Media Theatre); Ensemble in *Rogers and Hammerstein's Cinderella*, Extra/Lumiere Cover in *Disney's Beauty and the Beast* (Walnut Street Theatre). Education: University of Central Florida, BFA Musical Theatre, Dance Minor. Not every project an artist gets to work on is something that moves, inspires and sparks joy. This story and team are a blessing that I will always be thankful for. @ethanwalker



**CURTIS WILEY** (Agwe) Arden Debut. Broadway: *Ain't Too Proud: The Life and Times of The Temptations*. National Tour: *Jersey Boys*; *The Lion King*. NYC/Off-Broadway: *The Total Bent* (The Public Theater); *Rothschild & Sons* (The York Theatre Company); *Pageant: The Musical* (Off-Broadway Revival). Regional: *American Prophet: Frederick Douglass In His Own Words* (Arena Stage); *Diner* (Delaware Theatre Company); *Wig Out!* (Sundance Theatre Institute). Film/Television: *FBI: Most Wanted*; *Queens of Christmas*. Stay in touch on IG: @Curtis\_Wiley



**CHABRELLE WILLIAMS** (Mama Euralie) Arden debut. Broadway: Esther Mills in *Intimate Apparel* (Lincoln Center Theater). Regional: Winifred Banks in *Mary Poppins* (The Media Theatre); Girlfriend #1/Nurse in *Blue* (New Orleans Opera); Claudette Colvin in *She Who Dared* (American Lyric Theatre). Film/Television: Milica in *Svadba* (Boston Lyric Opera); Elevator Voice/Opera Singer in *Albie's Elevator* (WHYY). Education: Oberlin Conservatory of Music, BM; CCM; University of Cincinnati, MM; Rice University, Artist Diploma; Teaching Artist for Opera Omaha, Holland Community Opera Fellowship. Special shoutout to my cuzzo. I cannot wait to tell this wonderful story with you and the rest of this beautiful cast! Chabrelle also loves teaching and is an educator of Opera Philly. @chabzadoodle98

**LYNN AHRENS** (Book/Lyrics) won Tony, Drama Desk and Outer Critics Circle Awards and received two Grammy nominations for Broadway's *Ragtime*. For Twentieth Century Fox's animated feature film *Anastasia*, she was nominated for two Academy Awards and two Golden Globes. She and longtime collaborator Stephen Flaherty received the Oscar Hammerstein Award for Lifetime Achievement, and in 2015 they were inducted into the Theater Hall of Fame. Broadway: *Anastasia*; *Once On This Island* (Olivier Award, Best Musical; Tony nominations, Best Book and Score); *Seussical* (Grammy nomination); *My Favorite Year*; *Chita Rivera: The Dancer's Life*; *Rocky*; Madison Square Garden's *A Christmas Carol*; *Ragtime* (2010 Broadway revival). Off-Broadway and regional: Lincoln Center Theater's *Dessa Rose*, *The Glorious Ones* (both Drama Desk-nominated) and *A Man of No Importance* (Outer Critics Circle Award, Best Musical); *Lucky Stiff*; *Little Dancer* (Kennedy Center world premiere). Film and television credits include *A "Christmas Carol"* (NBC-TV); *Camp* (IFC Films); *"Schoolhouse Rock"* (ABC-TV) and others. (Emmy Award and four Emmy nominations). She is a Council member of the Dramatists Guild of America, a co-founder of the Dramatists Guild Fellows Program, and a Lilly Award winner for Lyrics. www.ahrensandflaherty.com

# Who's Who

**STEPHEN FLAHERTY** (Music) is the composer of the Broadway musicals *Ragtime* (Tony, Drama Desk, OCC Awards, two Grammy nominations), *Seussical* (Grammy, Drama Desk nominations), *Once on This Island* (Tony nomination, Olivier Award, Best Musical) and *Rocky*. Additional Broadway includes *Chita Rivera: The Dancer's Life* (original songs) and Neil Simon's *Proposals* (incidental music). Stephen has also written four musicals at Lincoln Center Theatre: *The Glorious Ones* (OCC, Drama Desk nominations), *Dessa Rose* (OCC, Drama Desk nominations), *A Man of No Importance* (OCC, Best Musical, Drama Desk nomination) and *My Favorite Year*. Other theater includes *In Your Arms* (Old Globe), *Little Dancer* (Kennedy Center), *Lucky Stiff* (Playwrights Horizons) and *Loving Repeating: A Musical of Gertrude Stein* (Chicago's Jefferson Award, Best New Musical.) Film includes *Anastasia* (two Academy Award and two Golden Globe nominations), the documentary *After The Storm* and *Lucky Stiff*. Mr. Flaherty's concert music has premiered at the Hollywood Bowl, Boston's Symphony Hall, Carnegie Hall, the Guggenheim Museum and Symphony Space. This year celebrates Stephen's 32-year collaboration with lyricist-librettist Lynn Ahrens. Stephen and Lynn are members of the Dramatists Guild Council and co-founders of the Dramatists Guild Fellows Program. In 2015 they were inducted into the Theater Hall Of Fame. Upcoming: the stage adaptation of *Anastasia*. AhrensAndFlaherty.com.

**ROSA GUY** (author of "My Love, My Love") was an influential writer of novels for young adults. A Trinidadian by birth, she made her home in Harlem, where she co-founded the Harlem Writers Guild. An active figure in the civil rights movement, her writing was considered groundbreaking for centering poverty and racial prejudice faced by Black youth and her works were celebrated for her portrayal of the importance of community and love. Her novels include "The Friends," "Ruby," and "Edith Jackson."

**AMINA ROBINSON** (Director) is an actor, director, and Professor of Acting and Musical Theater at Temple University. She is immensely excited to return to the Arden for *Once of This Island*. Amina has performed on Broadway, National Tours, film, television, national commercials, and various regional productions. Amina's directing credits include productions at Arden Theatre Company, Pennsylvania Shakespeare Festival, Theatre Horizon, Azuka Theatre, IAMA Theatre Company in Los Angeles, Queens Theater in New York, Passage Theatre Company in New Jersey, The Lantern Theater, and Temple University. Amina is the first Black woman to win a Barrymore Award for Outstanding Direction of a Musical for *The Color Purple* at Theater Horizon.

**MARIAH GHANT** (Assistant Director) Arden: Letitia (u/s) in *Clyde's*; Arden Professional Apprentice Class 26; Regional: Artistic Director (Delaware Shakespeare); Assistant Director, *Fat Ham* (Wilma Theater); Member of Theatre Contra; Improvisor with ComedySportz Philly; Education: Vassar College. Mariah also enjoys acting, dancing, teaching, writing poetry, and watching terrible reality TV. She continues to pursue her passion for creating art that is accessible for all and provides opportunities for those otherwise underrepresented to have a voice. Love to Adrian, always.

**DEVON SINCLAIR** (Choreographer) Arden debut. Devon works as Director/Choreographer, Actor, and Teaching Artist around the Philadelphia Region and is an Adjunct Professor at Temple University. Regional: Co-Director/Choreographer in *Madagascar Jr.* (Walnut Street Theatre); Choreographer in *School of Rock* (Media Theatre); *Tuck Everlasting* (Centre Theatre); *Mary Poppins* (Quintessence Theatre Group). Director/Choreographer in *Big Fish*, *Ain't Misbehavin'* (Candlelight Theatre); *Elf The Musical* (Broadway Theatre of Pitman). Film/Television: Self in *Albie's Elevator* (WHYY). Education: Penn State University, Walnut Street Theatre Dorothy Haas Acting Apprentice, Upper Darby Summer Stage. 2023 Barrymore Award Winner for Outstanding Choreography in a Musical. A vibrant thanks to Amina, Gina, the Arden team, and my community of loved ones, students, and supporters! @CHOREATOR | #FiveSixDevonEight

**GINA GIACHERO** (Music Director) Arden: *The 25th Annual Putnam County Spelling Bee* (Asst. MD), *Into the Woods* (Asst. MD), *Ragtime* (Asst. MD), *Cabaret* (Accordion Player), *Gypsy* (Asst. MD). Regional: Music Director credits – *The Spongebob Musical* (Upper Darby Summer Stage); *Honk!* (Delaware Theatre Company); *Head Over Heels* (Temple University Theatre); *Forbidden Broadway* (Walnut Street Theatre). Education: West Chester University (Bachelor of Music). Gina is also an adjunct professor at Temple University and a professional harpist. Much love to Tom, Milo, Jenn, Mom and Dad!

**JAY ROSEN** (Assistant Music Director) Arden: Guitar (sub) for *Assassins*. US Tours: Guitar for *Legally Blonde* (Big League Productions); Piano for Postmodern Jukebox. Regional: Guitar and Associate Music Director for *Escape to Margaritaville*, Keyboard and Associate Music Director for *Matilda the Musical* (Walnut Street Theatre). Education: Ithaca College and Temple University. Jay plays keyboards, guitars, and pedal steel guitar and played on Rachel Andie and the V Element's *Tu Me Manques* album and Emily Drinker's *Starting to Feel*.

**DAVID P. GORDON** (Scenic Designer) Arden: 46 productions including *The BFG (Big Friendly Giant)*, *Once*, *Cabaret*, *Freud's Last Session*, *If You Give a Mouse a Cookie*, and *Sweeney Todd - The Demon Barber of Fleet Street*. New York: The Public Theater, Theatre for a New Audience, Classic Stage Company, Ensemble Studio Theatre. Regional: The Wilma Theater, Walnut Street Theatre, Philadelphia Theatre Company, Hartford Stage, The Old Globe, Long Wharf Theatre, Williamstown Theatre Festival, Chicago Shakespeare Theater, John F. Kennedy Center for The Performing Arts. Opera: New York City Opera, LA Opera, Seattle Opera, Florida Grand Opera, Sarasota Opera House, Des Moines Metro Opera, Lincoln Center for The Performing Arts. Awards: 5 Barrymore Awards, Elliot Norton Award. Director of Design & Production at Rutgers University's Mason Gross School of the Arts. [davidpgordondesign.com](http://davidpgordondesign.com)

**ALYSSANDRA DOCHERTY** (Lighting Designer) Arden: *What the Constitution Means to Me*. Select Regional: *Beautiful: The Carole King Musical* (Walnut Street Theatre), *Here You Come Again* (Goodspeed Musicals, Delaware Theatre Company); *Always... Patsy Cline*, *Peter and the Starcatcher*, *Noises Off*, *Man of La Mancha*, *Plaid Tidings* (Delaware Theatre Company); *A Sherlock Carol* (Westport Country Playhouse); *The Thirty-Nine Steps* (Virginia Stage Company); *The Garbologists*, *Sweat* (Philadelphia Theatre Company); *The Play That Goes Wrong* (1812 Productions). Education: BA in Theatre (DeSales University); Apprentice (Goodspeed Musicals). Aly is a four-time Barrymore Award nominee and one-time winner, also earning a nomination for the Ostrander Award in Memphis. [www.alyssandradocherty.com](http://www.alyssandradocherty.com)

**LEVONNE LINDSAY** (Costume Designer) Arden Theatre Company: *Radio Golf* (Barrymore Award nominee), *Into the Woods*, *School Girls; Or, The African Mean Girls Play*, *Ragtime*, *Gem of the Ocean* (2019 Barrymore Award winner), *The Bluest Eye*; InterAct Theatre Company: *Selling Kabul*; Pennsylvania Shakespeare Festival: *Lady Day at Emerson's Bar and Grill*, *Much Ado About Nothing*; Wilma Theater: *Kiss, Kill Move Paradise*; Philadelphia Theatre Company: *The Garbologists*, *Sweat*; Arena Stage: *Tempestuous Elements*; Indiana Repertory Theatre: *Flying West*. Education: BS in Fashion Design (Philadelphia University); MFA in Costume Design (University of Maryland, College Park). LeVonne is the Costume Shop Manager at Swarthmore College.

**ELIZABETH ATKINSON** (Sound Designer) Arden: *Assassins*, *The 25th Annual Putnam County Spelling Bee*, *Into the Woods*, *Ragtime*, *Once*, *74 Seconds... To Judgment*. Liz is currently residing in Philadelphia, after many years in Pittsburgh where she was Resident Sound Designer at City Theatre Company. Her freelance career includes regional theatre credits at Applied Mechanics, Wilma Theater, Theatre Exile, Simpatico Theatre, InterAct Theatre Company, Inis Nua Theatre Company, People's Light, Walnut Street Theatre, Yale Repertory Theatre, Hartford Stage, and Quantum Theatre. Liz has also had the honor of exhibiting at the 2007, 2011, and 2015 Prague Quadrennials.

**ALEC E. FERRELL** (Stage Manager) Arden: *Ladysitting* (World Premiere), *What the Constitution Means to Me*, *The 25th Annual Putnam County Spelling Bee*, *Clyde's*, *Every Brilliant Thing*, *Into the Woods*, *The Snowy Day and Other Stories* by Ezra Jack Keats, *No Child...*, *My General Tubman* (World Premiere), *Indecent*, *Gem of the Ocean*, *Once*, *Fun Home*, *Toni Morrison's The Bluest Eye*, *Touch Tones* (World Premiere), *Gypsy*, *The Legend of Georgia McBride*, *The Secret Garden*, *Metamorphoses*, *Macbeth*, *La Bête*, *Three Sisters*, *Parade*, *A Raisin in the Sun*, *Next to Normal*, *August: Osage County*, *Ghost-Writer* (World Premiere), *Blue Door*, *My Name is Asher Lev* (World Premiere). Regional: Trinity Repertory Company, Adirondack Theatre Festival, Theatre Horizon, Eugene O'Neill Theater Center. International: *[untitled project] #213* (Edinburgh Festival Fringe). Proud Member of AEA, SMA. Love and thanks to the family!

**LYNDSEY CONNOLLY** (Assistant Stage Manager) Arden: Stage Manager for *The Lehman Trilogy* and *The BFG (Big Friendly Giant)*, Assistant Stage Manager for *Assassins* and *Every Brilliant Thing*, Deck Crew for *Clyde's*. Regional: Stage Manager for *the pigeon* (The Strides Collective); Stage Manager for *Hannah + The Healing Stone* (terraNOVA Collective). Education: Entertainment and Arts Management with a concentration in Theatre (Drexel University).

**TERRENCE J. NOLEN** (Producing Artistic Director) is Co-founder and Producing Artistic Director of Arden Theatre Company. Favorite Arden productions include all-Philadelphia casts of *August: Osage County*, *Death of a Salesman*, *The Grapes of Wrath*, and *Hedda Gabler*; and such musicals as *Next to Normal*, *Sweeney Todd*, *Pacific Overtures*, *Violet*, and *Caroline, or Change*. Terry directed the inaugural production of Arden Children's Theatre, *Charlotte's Web*. He has directed seven world-premiere plays by Michael Hollinger, three by Dennis Raymond Smeal, three by Michael Ogborn, two by Rogelio Martinez, and Bruce Graham's *Something Intangible*. Terry has been nominated for 27 Barrymore Awards for his directing work at the Arden and received awards for *The Baker's Wife*; *Sweeney Todd*; *Opus*; *Winesburg, Ohio*; *Assassins*; *Something Intangible*; and *Fun Home*. He directed Michael Hollinger's *Opus* at Primary Stages in New York and was nominated for a Lucille Lortel Award for Outstanding Director. His short film *The Personal Touch* was nominated for an Emmy Award.

**AMY L. MURPHY** (Managing Director) A Philadelphia native, Amy co-founded the Arden in 1988 with Terrence J. Nolen and Aaron Posner. She is especially proud of the Arden Professional Apprenticeship program and its contribution to the Philadelphia cultural community. She completed the Executive Program for Nonprofit Leaders-Arts. Amy has served on the Board of the Cultural Alliance and Theatre Philadelphia. She has served on panels for the National Endowment for the Arts, the New Jersey State Arts Council, Theatre Communications Group and the Philadelphia Cultural Fund. Amy was named a Hepburn Fellow 2008-9 by the Katharine Houghton Hepburn Center at Bryn Mawr College.

**MUSIC THEATRE INTERNATIONAL (MTI)** is one of the world's leading theatrical licensing agencies, granting theatres from around the world the rights to perform the greatest selection of musicals from Broadway and beyond. Founded in 1952 by composer Frank Loesser and orchestrator Don Walker, MTI is a driving force in advancing musical theatre as a vibrant and engaging art form. MTI works directly with the composers, lyricists and book writers of these musicals to provide official scripts, musical materials and dynamic theatrical resources to over 100,000 professional, community and school theatres in the US and in over 150 countries worldwide. MTI is particularly dedicated to educational theatre, and has created special collections to meet the needs of various types of performers and audiences. MTI's Broadway Junior™ shows are 30- and 60-minute musicals for performance by elementary and middle school-aged performers, while MTI's School Editions are musicals annotated for performance by high school students.

**ARDEN THEATRE COMPANY** Founded in 1988, Arden Theatre Company is dedicated to bringing to life great stories by great storytellers—on the stage, in the classroom, and in the community. We create and produce new work through the Independence Foundation New Play Showcase. The Arden Professional Apprenticeship program trains future theatre leaders, and Arden Drama School classes teach children and teens about the craft of making plays. Our access program, Arden For All, makes our work available to the entire community through subsidized tickets and books for economically disadvantaged young people, and our Arden Arts Scholarship Fund provides scholarships for Arden Drama School classes and camps. The Arden has received twelve *Philadelphia Magazine* “Best of Philly” Awards, the Arts & Business Council's Arts Excellence Award, six *City Paper* “Reader's Choice” Awards, four *Philadelphia Inquirer* “Theatre Company of the Year” citations, 82 awards and 433 nominations from the Theatre Philadelphia's Barrymore Awards for Excellence in Theatre, and was named “Best Theatre Company” by *Philadelphia Weekly* in 2009. Arden Theatre Company, a professional, nonprofit 501(c)(3) theatre company, is a member of the Theatre Communications Group, the League of Resident Theatres, Greater Philadelphia Cultural Alliance, Philadelphia Convention and Visitors Bureau, and Old City Arts Association.

**Arden Theatre Company wishes to thank** Donna Ellis and Brian Morrison from Hands UP Production, LLC, and Andrew Girardi and Brian McCoy of C.H. Schwertner & Son

# 2023/24

## DINING PARTNERS

Restaurants in Old City and surrounding neighborhoods are ready to welcome you!  
We recommend these restaurants that support the Arden.

---

### **Café Tolia\***

26 N. 3rd Street  
267.687.2533  
cafetolia.com  
@cafetolia

### **Cuba Libre\***

10 S. 2nd Street  
215.627.0666  
cubalibrerestaurant.com  
@cubalibrephiladelphia

### **The Franklin Fountain\***

116 Market Street  
215.627.1899  
franklinfountain.com  
@franklinfountain

### **Fork**

306 Market Street  
215.625.9425  
forkrestaurant.com  
@forkrestaurant

### **Forsythia\***

233 Chestnut St  
215.701.4883  
forsythiaphilly.com  
@forsythia\_philly

### **French Toast Bites\***

Inside Cherry Street Pier  
121 N. Columbus Blvd  
lokalartisanfoods.com  
@LokalArtisanFoods

### **Home Cuban Café\***

17 N. 3rd Street  
239.404.8038  
homecubancafe.com  
@home.cuban.cafe

### **High Street Philly**

101 S 9th Street  
215.625.0988  
highstreetonmarket.com  
@highstreethoagies

### **Khyber Pass Pub\***

56 S. 2nd Street  
215.238.5888  
khyberpasspub.com  
@khyberpasspub

### **Las Bugambilias\***

15 S 3rd Street  
267.239.5673  
lasbugambiliasphilly.com  
@lasbugambiliasphilly

### **National Mechanics**

22 S 3rd Street  
215.701.4883  
nationalmechanics.com  
@nationalmechanicsphilly

### **The Plough and the Stars\***

123 Chestnut Street  
215.238.0499  
ploughstars.com  
@theploughphilly

### **Positano Coast**

#### **by Aldo Lamberti\***

212 Walnut Street 2nd Floor  
215.238.0499  
positanocoast.net  
@positanocoastphilly

### **Race Street Cafe\***

208 Race Street  
215.627.6181  
racestreetcafe.net  
@racestreetcafe

### **Royal Boucherie\***

52 S 2nd Street  
267.606.6313  
royalboucherie.com  
@royalboucherie

---

Restaurants with \* offer a special promotion to Arden patrons.  
Please ask your server for details/scan the QR code for more details.

For complete restaurant descriptions visit: [ardentheatre.org/dining](http://ardentheatre.org/dining)

Dining Partners as of 4/26/24



JOIN US

*Make Our*

# GARDEN

*Grow*

A one-night-only concert and celebration in support of the Arden

Monday, June 3, 2024 | 6:30-10 PM

Tickets at [ardentheatre.org/GardenParty](https://ardentheatre.org/GardenParty).

Arden Theatre Company  
40 N. 2nd Street  
Old city, Philadelphia



## PRODUCING SPONSORS

Nancy and Bob Elfant  
Elizabeth Gemmill

Alta and N. Peter Hamilton  
June and Steve Wolfson

## FEATURE SPONSORS



## SUPPORTING SPONSORS



KIERAN TIMBERLAKE



Anne Cook and Russ Troyer

Robin and Saifuddin Mama

Lee and Chris van de Velde





## \$100,000 & above

Hamilton Family Charitable Trust  
Rosenthal Family Foundation  
Shubert Foundation  
William Penn Foundation  
Wyncote Foundation

## \$50,000 to \$99,999

Harmelin Media  
Independence Foundation  
PA Department of Community and Economic Development

## \$25,000 to \$49,999

Anne M. and Philip H. Glatfelter III Family Foundation  
Comcast Corporation  
The Horace W. Goldsmith Foundation  
PECO Energy

## \$10,000 to \$24,999

Anton Charitable Trust,  
In Memory of  
Frederick W. Anton III  
Arcadia Foundation  
Fox Chase Bank Charitable Fund  
The Sylvia W. and  
Randle M. Kauders Foundation  
Lincoln Financial Foundation  
National Endowment for the Arts  
Penguin Young Readers+  
Philadelphia Cultural Fund  
PNC Charitable Trust —  
Robert H. Reakirt Foundation  
The Suzanne Roberts Cultural  
Development Fund  
TD Charitable Foundation  
Truist  
Univest Financial  
Zeldin Family Foundation

## \$5,000 to \$9,999

Civic Foundation  
Ethel Sergeant Clark Smith  
Memorial Fund  
The Haley Foundation  
Janet Yaseen Foundation  
Pennsylvania Council on the Arts

## \$2,500 to \$4,999

Bendita Foundation  
Charlotte Cushman Foundation  
Christian R. and Mary F. Lindback  
Foundation  
Cuba Libre+  
Elliott-Lewis Corporation  
Franklin Fountain+  
Las Bugambillas+  
The Lida Foundation  
The Paul E. Kelly Foundation  
Philadelphia Activities Fund  
The Plough and the Stars+  
Republic Bank  
TCF- The Community's Foundation  
Virginia Brown Martin Fund of  
the Philadelphia Foundation

## \$1,000 to \$2,499

Alex J. Ettl Foundation  
Barnes & Noble+  
BeneServ  
Birchtree Catering+  
Cafe Tolia+  
Dolfinger-McMahon Foundation  
Franklyn Rodgers Family Fund of  
the Philadelphia Foundation  
French Toast Bites+  
Forsythia+  
Global Atlantic Financial Group  
Hamilton Family Foundation  
Hassel Foundation  
Home Cuban Cafe+  
National Mechanics+  
Rittenhouse Foundation  
Sun East Foundation

## Up to \$1,000

1812 Productions+  
Actors' Equity Foundation  
Bryn Mawr Presbyterian Church Choir  
City Fitness+  
High Street Philadelphia+  
Philadelphia Theatre Company+  
The Mann Center for the  
Performing Arts+  
Quaker Printing+  
The R. Andrew Swinney Presidential  
Achievement Fund of the  
Philadelphia Foundation  
Weavers Way Co-op+  
The Wilma Theater+  
Walnut Street Theatre+  
Wide Eyed Studios+

## Employee Giving, Matching Gift, Donor Advised Fund Partners

Amazon Smile  
American Online Giving Foundation  
Bank of America  
Bristol Myers Squibb  
Cadence Design Systems, Inc.  
Caterpillar Foundation  
Charities Aid Foundation  
of America  
The Chicago Community Foundation  
Chubb  
CIGNA Corporation  
Community Foundation of New Jersey  
Cristo Rey  
Dun & Bradstreet  
Equitable / AXA Foundation  
Exelon Corporation  
Fidelity Charitable  
Give Lively Foundation  
GlaxoSmithKline  
Global Atlantic Charitable Gift Fund  
Goldman Sachs  
Google  
Impact Assets  
Independence Foundation  
Jewish Communal Fund  
Johnson & Johnson  
JP Morgan Chase & Company  
Macy's/ Bloomingdale's  
McKinsey & Company  
Morgan Stanley  
Merck Foundation  
National Philanthropic Trust  
PayPal Giving Fund  
PECO  
Penn's Way  
The Philadelphia Foundation  
Renaissance Charitable Foundation  
Saint-Gobain Corporation Foundation  
Sap America, Inc.  
Schwab Charitable  
Susquehanna International Group, LLP  
TD Charitable Foundation  
T. Rowe Price  
United Way  
Vanguard Charitable  
William Penn Foundation

+ Denotes a gift of goods or services

This list represents gifts made  
through May 3, 2024



The  
**Sylvan Society**  
Arden Theatre Company

*Grounding the Present, Nurturing the Future*

The Sylvan Society recognizes individuals who support the Arden's work by making annual gifts of \$1,000 or more.

The special generosity of our members enables the Arden to tell great stories by having the resources to achieve the highest level of artistic quality.

\*This list represents gifts made through May 3, 2024\*

**Chestnut Grove**  
(\$25,000 and above)

Lois G. Brodsky  
The CHG Charitable Trust  
Nancy and Bob Elfant  
Michael Grove  
Alta and N. Peter Hamilton  
Joanne and Jon Harmelin  
Monica and Philip Rosenthal  
Lee and Chris van de Velde  
June and Steve Wolfson

**Sassafras Grove**  
(\$10,000 - \$24,999)

John R. Alchin and Hal Marrayatt  
Christina and David Fryman<sup>^</sup>  
Elizabeth Gemmill  
Terry and Ann Marie Horner  
Robert and Risa Lavizzo-Mourey<sup>^</sup>  
Peggy Morgan and Patty Bowman  
Charles Rose  
Harvey B. Swedloff

**Cherry Grove**  
(\$5,000 - \$9,999)

Anonymous  
Richard and Kathleen Aregood  
Rayenne Chen  
Anne Cook and Russ Troyer  
Ann E. Diebold  
Deb Dorsey and Mike Green  
Elisabeth Erlbaum  
Stephen Falchek and John Offidani III  
Richard Harris  
Eileen Heisman and Marty Tuzman  
Jim and Carolyn Hessinger  
Robin and Saifuddin Mama  
Alexis and Ed Pappas  
Tom Petro and Kris Messner  
Ceth and Sam Plum

Rosalyn K. Robinson and  
Warren B. English  
Bernard and Camille Rosenberg  
Sid and Ruth Rosenblatt  
Sharon and Irv Shapiro  
Hether and Don Smith  
Rosalyn and Stephen Weinstein  
Nancy Brent Wingo

**Filbert Grove**  
(\$2,500-\$4,999)

Brett and Nan Altman  
Charles Arnao and Rosemary Watt<sup>^</sup>  
Bethany Asplundh  
John and Amy Bitman  
Bob and Cheryl Carfagno  
John and Fern Culhane  
Joy De Jesús and James Reynolds  
Laura Drake  
Shannon and Ted Farmer  
Elizabeth Fernández-Viña~  
Jill Fisch and John Gassenheimer  
Linda and David Glickstein  
Jen Harmelin  
Ed Hillis and Audrey Cohen  
Peter\* and Louise Kelly  
Kenneth Klothen and  
Eve Biskind Klothen  
William A. Loeb  
Janice Madden  
Michael Mallee  
Barb and Don Matheson  
Amy Murphy and Terry Nolen  
Joel and Bobbie Porter  
John and Claire Rodgers  
Marilyn and Hank Royfe  
Kathleen Sernak  
Keith and Jim\* Straw  
Hope Yursa

**Mulberry Grove**  
(\$1,000-\$2,499)

Anonymous (6)  
Hank Adamczyk and Iris Melendez  
Becky and John Adams  
Diane Alessi  
Stan and Lisa Altman  
Patty and Joe Amato  
Winifred Anderson and Eric Lien  
Stephen S. Arms and Jennifer J. Arms  
Jim and Janet Averill  
Rhonda Ball  
Sheryl and Allen Bar  
Sheila Bell  
Jay and Nancy Berkowitz  
Linda and Mark Bernstein  
Bill and Brenda Bertrand~  
Sandy and David Beswick  
Ian and Ryane Beutler  
Dr. Regina Blaszczyk and Lee O'Neill  
Louis Bluver  
Viola W. Bostic  
DeDe and Tony Brown  
Ann and David Brownlee  
Vicki and Russ Carlson  
Karl Carter  
Christopher and Jeffrey Carver  
Cordelia Clement  
Barbara Cobb  
Marc and Margie Cohen  
Kelly Colarelli<sup>^</sup>  
The Susan Lavine  
Coleman Charitable Fund  
Gregory L. Coleman  
Rebecca Davis and Mark Hoffman  
Ellen Deacon~  
Robert M. Dever  
Tobey and Mark Dichter  
Michael A. and Edward C. Donato  
Samuel Duplessis and  
Daniel Krewson

# Sylvan Society cont...

Carol Eicher  
Paul and Judy Farber  
Mr. and Mrs. Farenback-Brateman  
Donna and Norman Faye  
Jeanne B. Fisher and Robert F. Lang  
Carole M. Foley  
Dieter and Sara W. Forster  
Ellen and Tim Foster  
Sandi Foxx-Jones  
Lou and Rhoda Fryman,  
In Honor of David Fryman  
Julie and Tom Gennaro  
Terry Graboyes  
William and Joan Greenfield  
Kate Groark-Shields  
The H and R Feinberg Family  
Foundation  
David C. and MaryJane Hackney  
Ann and Glenn Haig  
Anne Halkedis^  
Ellen and Steve Harris  
Hon. Lillian Harris Ransom  
Dr. Valerie Harrison  
Don and Lynn Haskin  
Janis Hawes and Patrick Cunningham  
Charles W. Head Jr. and  
John A. Faggotti  
Heidi Hertfelder^  
Steve\* and Jane Heumann  
Karen and Mark Hite  
Deborah Hluchan  
Phyllis Hochberg and Stuartz Katz  
Diane Hofer  
Jill Hyman Kaplan and Elliot Kaplan  
Rachelle and Ron Kaiserman  
Margie and Scott Kasner  
Holly Kinser  
Carol Kelley  
Steven Klein  
Peter J. and Sandra Klugman

Steven Knepper  
B. Koller  
Valerie Koscelnik  
Marilyn and David Kraut, In Honor  
Of Amy Murphy and Terry Nolen  
Deborah R. Kravetz and Bill Robling  
Cyana La Divertida  
Mr. Robert Leventhal and  
Ms. Cheryl Getty  
Michael MacFarland  
Richard Maimon and Susan Segal  
Lee Marks and Lisl Zach  
Linda McAleer  
John and Amy McCawley^  
Kathy McMaster  
Peter and Laura McQuaid, In Honor  
of the amazing Arden Theatre Team  
A.C. Missias  
Chloe Mohr  
Leslie and Michael Molder  
Adam Mussell and Kate Whittington  
Marge Neff and Dan Winterstein  
Kathleen Nelson and John Kromer  
Arnold and Shelley New  
Mary Ivy and Roger Noone  
Michael Norris and Matt Varrato  
Susan Odessey  
Barbara Oldenhoff  
Robert Overell and Lisa Glasser  
Don and Barbara Parman  
Ronald and Pam Pontano  
Maya Ponte and Benji Eichberg  
Laura and Douglas Pratt  
David Pressel and Jill Feldman  
Daniel Promislo  
Rachel Reilly  
Alan Reinach and Dana Perlman  
Alice Reyes  
Rachel R. Reynolds  
Joy Rickabaugh

E. Graham and Elizabeth Robb,  
In Honor of Lee van de Velde  
Franklyn and Cintra Rodgers  
Jane A. Rose, CPA/PFS  
Mike Salmanson and Tobi Zemsky  
Gisèle Sambar Bathish  
Becky Sassi  
Geoff Schmidt and Marie Wong  
Kim and Ross Schmucki  
Ellen Schwartz and Jeremy Siegel  
Terri Schwomeyer  
Genieve and Clete Shields~  
Roy and Lee Shubert  
Laura and Ron Siena  
Paulette Singleton  
Gayle and David Smith  
Kathy and Don Smith  
Valerie Smith^  
The Spector Charitable Trust  
Rudy Sprinkle and Andrea Barsevick  
Mike and Shannon Stellato~  
Kathleen A. Stephenson  
Robert and Sydney Stevens  
William K. Stewart, Sr. Foundation  
Stephen and Kathy Thompson  
April J. Tvarok, In Honor of Class 9  
Thomas and Dawn Weiss^  
Caitlin Wood and  
Martha Schoolman~  
Richard and Diane Woosnam  
Ellen Yin+  
Beth Zatuchni and Jerry Satlow~  
Tom and Jackie Zemaitis

\* Denotes a deceased supporter  
+ Denotes a gift of goods or services  
^ Includes a matching gift  
~ Includes a monthly gift

## THE LEGACY SOCIETY

Arden Theatre Company would like to recognize the following supporters who have included the Arden in their wills or estate plans. Their planned gift provides support which will help sustain the Arden's work for decades to come.

Anonymous  
Ms. Peggy Anderson\*  
Stanley Baurys\*  
Ivy Bayard\*  
Jane Berryman  
Louis Bluver  
Mary P. Burr  
Pearl M. Carpel\*  
Larry S. Friedman\* and  
Dean H. Rishel

Ellis Ginsberg\*  
Peter Gistelnick and Kim Bloom  
Grace Goglewski and  
Eric Schoefer  
Gary R. Grob\*  
David C. and Mary Jane Hackney  
Jim and Carolyn Hessinger  
Suzanne and James Hill  
Alan and Nancy Hirsig\*  
Mary Ellen Krober

William Loeb  
Donald Martin and Richard Repetto\*  
Peggy Morgan  
Tom Petro and Kris Messner  
Kristen Phillips and Matt Schreck  
Renee E. Polsky\*  
Madeline Portnoy  
Irene M. Reiter\*  
Dr. Harry Rosenthal  
Marilyn and Dean Staats

We hope you will consider including the Arden in your will or estate plans. To be recognized as a member of the Legacy Society or with questions regarding planned giving, please contact Jessica Abel, Director of Development, at 215.922.8900 x149.

# Thank You to Our Supporters

## \$500-\$999

Anonymous  
Jerry Abelson and June Idzal  
Sally and Michael Bailin  
Eddie and Myra Bell  
Ms. Reid Bodek~  
Carol and Allen Bonner  
Beth Burrell and David Sorensen  
Karen Cheney  
Carol Cook  
John Crawford and David Penyak  
Warren D. and Kaye L. Crown  
Catharine Dolan and Richard Bierregaard  
Jonathan V. Edmondson^  
Epstein Family Charitable Trust  
John Erickson and Harry Zaleznik  
Lisa Fair  
Paula Fuchsberg  
Dan Gannon  
Janet-Lynn Garrabrant  
Joseph and Jane Goldblum  
Tanya Gordon  
Ben and Jody Graff  
Paul D. Green  
Corrine Green M.A.  
Rhoda Harrison  
James Hinrichs  
Diane Hlywiak, Esquire  
Glenn Holsten  
Jane Kamp and Thomas Lloyd  
Janice King  
John and Holly Kleimo  
Catherine Klinger Klutcher  
Sarah Kloss  
Jane S. Kramer  
Mary Ellen Krober  
Ruth and Peter Laibson  
David Lerman and Shelley Wallock  
John and Melissa Lore  
John and Martha Lubell  
Mary Ellen Marzullo  
Brendan May and  
Mary Kate McGrath-May  
Michael McArdle  
Barbara McCleary  
Kathy McMaster  
Julie Meighan+  
Susan and Alan Miller  
Joann Mitchell  
Sandra S. Mock  
Jackie Morrill and Mike Donahue  
Shannon Mullican and Kurt Schillinger  
The Norman Family  
Mr. Joe Norton  
Shellie Peters  
Claire and Lud Pisapia  
Janet and John Poth  
Paul Rabe and Cheryl Gunter  
Susan and Steve Reisbord  
Kurt and Mary-Ann Reiss  
Robin Rifkin and Michael Silverman  
Daniel and Faye Ross,  
The Ross Family Foundation  
Dan Rothermel and Michael Hairston  
Mauricio Saavedra and  
Joanna Sykes-Saavedra  
Joseph Shaffer^  
Stanton and SaraKay Smullens  
Barbara and Robert Stewart  
Susan and Jim Strohmman  
Lewis and Hella Volgenau  
Donna and Andrew Wechsler

## \$250-\$499

Anonymous  
Carol and Bennett Aaron  
Stuart Adair, in Honor of Amy and Terry~  
Kim and David Adler  
Anthony Agati  
John Allerhiligen  
Zachary Altman  
Janet Alwang  
Marilyn and John Anthony  
Bree Archambault  
Sandra Axelrod  
Silva Baker  
Cynthia and George Barth  
Wilma Bass  
Ellen Baxter and Robert Kavash  
Richard and Eileen Bazelon  
Carol Beam  
Patricia G. Beck  
Pat and Tom Bender  
Gretchen Bender  
Sara and Bruce Berger  
Timothy Berger and Sarah Mooers  
Ruth L. Berman  
Charlotte H. Biddle  
Fern and Bob Billet  
Barbara Bisgaier  
Linda and Alden Blyth  
Janice Bogen  
Miriam Bowerman  
Ed Boyd and Ken Tasker  
Dr. Stephen Bulova and Eleanor W. Bulova  
Sabra Cameron  
Chip Capelli, In Honor of Amy Murphy  
Elizabeth Cerkez and Alec Schoenfeld  
Arlene Cessna  
George and Barbara Chalmers  
Leah Chaplin and Eileen Gildea  
Edward Chiginsky  
Diane and Patrick Close  
Deborah Co  
John Coleman  
Mary Coleman  
Lynn Collins  
Janet and Richard Conn  
Susan Cook and Jeff Staiokoff  
Betty Cooper  
Mary Jo Courey  
Jill, Hank and Katie Croft  
Paul Danifo  
Nancy DeLucia  
Marla and Andrew Diamond  
William Diebold and Deborah Freedberg  
Robert Dinardo  
Angela D'Orsi and Dean Beer  
Barrie duBois  
Robert Earle^  
Jeff and Michelle Eichen  
Sally and Stewart Eisenberg  
Anne Ewers  
William and Anne Ewing\*  
Norma A. Fabian  
Antoinette Farrar Seymour  
Cheryl and Steven Feil  
Mark and Rene Feitelson  
Victoria Ferguson  
Jay Finestone and Randy Jill Schwartz  
Victoria Ferguson  
John and Nancy Fischer  
Jacqueline Foldesy  
Kimberly Foster^  
Allan P. Freedman and Amy Rappaport  
Paul Friedmann

Tong Ming-Fu  
Brenda Furtak  
Bernadette Gallagher  
JJ Garcia and Charlie Dreisbach^  
Jesus Garcia  
Joel R. Gardner and Holly A. Phelps  
George and Dona Garrettson  
Janet Ginzberg and John Caskey  
Rena and Henry Goehl  
William and Ilse Goldfarb  
Jay Goldstein  
Joyce Goodman  
Eileen and Normal Gray  
Rita Greenfield  
Trudy and Paull Gutterman  
Marlane and Harvey Guttmann  
Larry Haefner  
Henry and Joyce Halpern  
Dr.\* and Mrs. James Haney  
Caroline Harries  
Carol Hauptfuhrer  
Chris and Karen Hennes  
Dan and Monica Hilferty  
Terry Hirshorn  
Leonard and Audrey Hoffman  
Michael J. Hozik and Margaret L. Rea  
Jim Hutchison and Nanci Ritter  
Dave F. Huting  
Jennifer Jenkins  
DL Kacer  
Philip\* and Marge Kalodner  
Phyllis Kauffman  
Douglas and Ruth Keating  
Susan Kellogg and Dick Hoffman  
Michael and Marie Kesis  
Kate Kidder  
Stephen Kieran  
Megan Kiesel  
Paul R. Kleschick III  
David Knowlton and Diane Zompa  
Eden Kratchman,  
In Honor of Richard Maimon  
Ellen Kurtz  
Joyce Laskin  
Andrew and Lynn Lees  
Drs. Bob and Joyce Leonetti  
Anna Levinger and  
Bree Lowdermilk  
Natalie Levkovich  
Edward Lundy and Debra Reiff  
Cirel and Howard Magen  
Kathleen Mahan  
Ruth Mandelbaum  
Murray Margolit  
Kevin and Megan Maynard  
Vicki Meitus  
Jeffrey Minehart  
Eric Moss  
Kate Nelson+  
Joanna Nunan  
Paul Nutaitis and Robert Clark  
Deb Olley and Brian T. Murphy,  
In Honor of Deb Dorsey  
and Mike Green  
Tim O'Malley  
Linda Osler  
Fred Ott  
Robert Ourach  
Kimberly C. Oxholm and Carl Oxholm III  
Mr. Larry Pace  
Michael and Judy Paul  
David and Amy Pollack  
Sandy Portnoy  
Ilene and Coleman Poses  
Nick and Peg Potalivo  
Gail and Jerry Raznov  
Eleanor and Joseph Reinhardt

# Thank You to Our Supporters

Mr. and Mrs. William H. Rivers, Jr.  
 Claire Rocco  
 Robert L. Roessler  
 Maxine Romano  
 Shelley Rosenberg  
 Anthony Rostain  
 Adelle Rubin  
 Amy and Mitch Russell  
 Suzanne Ryan  
 Suzanne and Kip Salus  
 Marilyn Sanborne and  
 Richard J. Labowskie  
 Rita Schaeer  
 Perlita and Frank Schorfheide  
 Bonnie Schorske  
 Jackie Schroder  
 Lauren and Daniel Schwartz  
 Lawrence and Carol Segal,  
 In Honor of Richard  
 Polly Shaffer  
 Dan and Hanna Shapira  
 Elaine Sherman  
 Thomas Sherman and  
 Nancy Middlebrook  
 Jim and Cathy Shippen  
 Diane Silverhardt  
 Robert Snyder  
 Amanda Spann^  
 Virginia Spykerman  
 Dr. Christina Stasiuk^  
 Emily Steiner  
 Elsie Stern and Steve Cohen  
 Rita and Neil Stevens  
 Elan Strominger  
 Edward and MaryAnn Tierney

Matthew Tom  
 Adrienne Topic  
 Margaret Evans Tuten  
 Bryan Ulishney^  
 Richard Urbani  
 Bruce and Nancy Urbschat~  
 Carol and Paul Vahlstrom  
 Judith Voet  
 Mark Wade  
 David Warshal  
 Marlene Weinberg  
 Vivian Weinblatt  
 Abigail Wolf and Jonathan Weiss  
 Judith L. Wellington  
 Caroline West  
 Doris A. Williams  
 Susan Williams  
 Richard Willis and Linda Hartnett  
 Jim and Jean Wilson  
 Linda Witt  
 Linda Wood  
 Sue and Eric Woolf  
 Josh Young

**\$125-\$249**  
 Anonymous (8)  
 Judy Aaron  
 Rhoda Abrams  
 Thomas Achenback  
 Eleanor Adam  
 William and Patricia Alber  
 Virginia Alpaugh~  
 Estelle Alexander  
 Michael Allen  
 Jenys Allende

Helene Amster  
 Melba Axelrod  
 Camille Bacon-Smith  
 Nelson Bagby  
 Esther Balkin  
 Theresa Bambino  
 Charlene and Keith Bance  
 Cecily Banks  
 Theresa Baraldi  
 Judy Barbush  
 Ronald Barras  
 Robert and Sandy Clay Bauer  
 Susan Becker and Aaron Rubin  
 Amy Brantz and Edward Bedrick  
 Sue Bentson  
 Mr. David Berch  
 Claire and Joseph Berger  
 Donald and Sheryl Berger  
 Marcie and Robert Berke  
 Frank Bernard  
 Sandy Betner  
 Barry and Marilyn Bevacqua  
 Bill Bissell, In Honor of  
 Arden Theatre Box Office Staff  
 Barbara Black  
 Nathan Blum and Barbara Rolnick  
 F. William Bogle  
 Ernest Bollin  
 Gwen Borowsky  
 Nicholas Bosshardt  
 Michael P. Boyle  
 Lorena Broesamle  
 Barbara Bromfield  
 Eadie and Allan Brooks  
 Kathleen Brooks



**123 Chestnut Street**  
**Entrance on 2nd**  
**Philadelphia**  
[WWW.PLOUGHSTARS.COM](http://WWW.PLOUGHSTARS.COM)

**THE PLOUGH**

*The Plough & The Stars*  
**Before or After the Show**  
**Arden guests receive**  
**10% off their meal!**

# Thank You to Our Supporters

Katherine Brown  
Elise Bruhl  
Ms. Monika Burke  
Sarah Campbell  
Michael Campo+  
Chester Allen Carson  
Vincent Cancro and Donna  
Davenport  
Debbie and Allen Casnoff  
Avigail Caspi Lebovic  
Lillian and William Cassel  
Caroline M. Castagno  
Margaret and Phillip Cavanaugh  
Anne Chain  
Kamesh Challuri  
Maureen Charnitski  
Mr. Joseph Chaya  
Becca Chazin  
Barbara Citerone  
Tawny Clark  
Mary Cochetti  
Gert Cohen  
Howard Cohen  
Lauren Coleman  
Everod Coleman  
Michael Coleman  
Rick and Carol Collier  
Kristina Collins  
Gina Collier  
Rosina Coltellaro  
Janet Cook  
Carol Copland  
Donna Cordner and Brent Groce  
Gladys Corrodi  
Barbara Cortese  
Joan Countryman  
Michael and Nancy Crawford  
Alexander Curtin  
Joseph and Helen D'Angelo  
Todd and Christine Darr  
Anne Davenport  
Katherine Davies  
Bill Davis and Lisa Handler  
Emily L. Davis  
Nancy and Ken Davis  
Kelly and Steve DeAngelis  
Robert and Bonnie DeAngelo  
Francis de Regnaucourt  
Emilia Demarco  
Teri Dicesare  
\*George F. Koch, Jr. and  
Santo A. DiDonato  
Susan Dinan  
Jeanne Doherty  
John Doherty  
Joseph and Virginia Dominic  
Joanne Donahue  
Stuart and Diana Donaldson  
Lisa and Paul Dougherty  
Lucille Schlack Drake  
Judith Drasin  
Shane Dreher+  
George Dvorak  
Anne Egan  
Linda Ellsworth  
Carole Epstein  
Edmund and Judy Erde  
Ted and JoAnn Erfer  
Morgan Everitt  
Adelaide Ferguson and Ron Cahan  
George Feuer  
Gene Fiducia  
Judy Flander  
Judy and Hal Fliegelman  
Donald Foote  
Alan Freed  
Kenneth Foster and Mary Jenkins  
Nikki Fox

We are proud to support

## **Arden Theatre Company**

## HARMELIN MEDIA

More than forty years of  
transforming advertising.

More than forty years of  
supporting the arts.

[harmelin.com](http://harmelin.com)

Mimi and Nick Fox  
Allyson J. Frank  
Elyce Freedman  
Rebecca Freedman  
Brenda Freitag and Chet Tuthill  
Douglas Frenkel and  
Marlene Weinstein  
Lynne Fuller  
Carol Fuoco  
Suzanne Gallagher  
Miriam Galster  
Susan Gasteyer  
Greg Gephart  
Scott and Lynda Glading  
Joan D. Gmitter  
Dick Goldberg  
Daphne Goldman  
Diane and Frederic Graboyes  
Marianne and Donald Green  
Rick Greenstein and Claudia Tesoro  
Celeste Griffith  
David and Myra Gutin  
Joanne Halscheid  
David and Janice Haman  
Elizabeth Harman  
Tahirah Harrigan  
Beverly Hayden  
Elizabeth Heller-Mesznik  
Susan Herron  
Les and Mary Heselton

Wendy and Steve Hess  
John and Marcia Hiehle  
Thelma Hilibrand  
Margaret Hill  
Richard and Barbara Hirsh  
Mary and William Hitchings  
Johnnie Hobbs  
Alexa Hogarty  
Robert Holland  
Esther and Robert Hornik  
Edward Hoy  
Geraldyn Humphrey  
Jill Huntley Taylor  
Thomas Hurster and Jacqueline  
Salmon  
Meghan Ignatosky^  
Dave Ingram  
Peter and Nora Hunt-Johnson  
Maurice Johnson  
Jeanette Johnson  
Bruce Joss  
Glenn Kalina  
Barbara and Leslie Kaplan  
Karen Kaplan^  
Medita Karam-Laville  
Anne Kasprinski  
Steven Kavanaugh  
Rosamond Kay  
Sean Keegan-Landis  
Colleen Keith

# Thank You to Our Supporters

Brian Kennedy  
 Cindy Kesselman  
 Rachel Kipnes  
 Cheryl and John Kirby  
 Laura Kirby  
 Brian and Caren Kirschner  
 Charles Klaniacki  
 David Klein  
 Ken, Eva, and Aaron Klein  
 Susan Kleinman  
 Lora Kline  
 Michele and John Koskinen  
 Gregory Koutnik  
 Vicki and Don Kramer  
 Richard G. Krassen  
 Louis Krause  
 Maureen Krueger  
 Denise A. Kuhn  
 Barry and Janet Kushner  
 Roman and Melaku Lakew  
 William Lederer  
 GeorgeAnn T Lenard  
 Susan Levin  
 Ely and Sarah Beth Levine  
 Arlene Liebman  
 Norman and Sylvia Lieberman  
 Mary Lee and Bill Lieser  
 Lisa Linder and Richard Grossman  
 Daniel and Kathleen Lipinski  
 Victoria Lipoff  
 Laurel and Robert Lipshutz  
 Brian Litt  
 Audrey Litto  
 Kathryn Loitz  
 Jacqueline Loli  
 Greg Lord  
 Diane and Michael Love  
 Joan Ryder and Robert Ludwig

Howard R. and Jennifer Lurie  
 Susan and James Lytle  
 Whit MacLaughlin and Catharine Slusar  
 Richard and Scotia MacRae  
 Theresa Mader and David Suter  
 Dan Maier  
 Miriam Mandell  
 Joseph M. Manko  
 Deb Martin  
 Ken and Margery Maurer  
 Kevin and Megan Maynard  
 George and Judy McCarthy  
 William McCauley  
 Patricia McCole  
 Alice McCreary and David Epler  
 Gavin McCullion  
 Michelle McFarlane  
 Dagmar McGill  
 Kathleen McGrann  
 Virginia McIntosh  
 Louise McLeod  
 Becky McMahon  
 Lorraine and Bruce McMahon  
 Arthur and Sallie Melvin  
 Adrienne Mendell  
 Allyson Mercer  
 Mary and Robert Metrione  
 Cheryl and Gerald Meyer  
 Barbara Miller  
 Frances Miller  
 Sandra and Martin Miller  
 Michael Milone  
 Dale Mitchell  
 Mary Fran Moeller  
 Jen and Jonathan Molod  
 Florence Momplaisir  
 Valerie Mond and Ed Nowak

Gina Moore  
 Calibous Moskowitz  
 Mary Mullarkey  
 Theodore and Theresa Munz  
 Sandra Murray  
 Ken and Sue Myers  
 Stephanie Naidoff  
 Ann Marie Nasuti  
 Marissa Neale  
 Heather Neff  
 Helen Newbold  
 Claiborne Newlin  
 Frances Novack  
 William Norton  
 David and Monda Noyes  
 Judith O'Dell  
 Grace O'Dowd  
 Nora O'Dowd  
 Patricia Ogiony  
 Mr. Gerald Orr  
 Jim Ortega  
 Abbey Owens  
 James Pabarue  
 Susan Lee  
 Alan and Bryna Paston  
 Ms. Doris Peltzman  
 Teresa Peterson  
 Kristen Phillips and Matt Schreck  
 Martha Platt and Marlis Kraft  
 Lois and Paul Plotnick  
 Alma Plummer Marshall  
 Jeffrey and Elizabeth Podraza  
 Theodore Politis  
 Victoria Pratt  
 Antoinette Pressman  
 Ruth Prushan  
 Aneira Puttaswamy  
 Joel Quast

forsythia



*Forsythia, Chef Christopher Kears's contemporary French restaurant and bar, is an ideal pre- and post-show dining destination located just a few short blocks from the Arden Theater.*

*Those dining at Forsythia before or after a show at the Arden Theater will receive a complimentary glass of Champagne, and a signature appetizer for the table.*



## DINNER:

Monday - Saturday, 5 - 10pm | Sunday, 5 - 9pm

## BRUNCH:

Saturday - Sunday, 10:30am - 2pm

## HAPPY HOUR:

Monday - Friday, 5 - 7pm | Sunday, 5 - 9pm

**233 CHESTNUT STREET, PHILADELPHIA PA 19106**



# Thank You to Our Supporters

Mark and Karen Reber  
Stanley and Rita Reichlin  
Mary Jo Reilly  
Judith Richter  
Barbara Rice  
Gary and Robin Risler  
Marjorie Risman  
Cathy Robinson  
Mrs. Deborah Robinson  
Renee Rollin  
Lou and Laura Romano  
Tracy Romans  
Carey and Robert Roseman~  
Richard and Anne Rosenberg  
Hal and Sue Rosenthal  
Edwin and Sally Rosenthol  
Richard Ross  
Diane Rossheim  
James Rush  
William Russell  
E. Ruth Sachs  
Joan and William Saidel  
Sandra Sborofsky  
Barbara Schaffer  
Nancy Scharff  
Karen Schermerhorn and Evan Seymour  
Les Schlessinger  
Marvel Shmiefsky  
Carl W. Schneider  
Jill and Kerry Schuman  
Mark and Nancy Schure  
Evelyn and Harold Schwartz  
Elena Selina  
Hermene Shapiro  
Irving Shapiro  
Stacie Shepard  
Iris Shiftan  
William Shoff  
Mel and Susanne Shuster  
Paul Siegel  
Robert and Harriet Singer  
Rebecca Sinkler  
Helen Smeltzer  
Harriet Smith  
George R. Smith  
Walter Sobon  
Jeffrey Sorkin~  
Patrick Sorrells  
Rudy Sprycar  
Marilyn and Dean Staats  
Joanna Stamper  
Megan Staples, In Honor of Amy Murphy  
Michael Stelle  
Margaret Stein  
Julie Stern  
Steven Stern  
Sarah Stitzer  
Catherine Stock  
Gaynor Strickler,  
In Honor of Anne Cook  
Daniel Szyld and Kathleen Ross  
Dr. Dolores Szymanski  
Linda R. Tabas  
Kenneth Tartof  
Sylvia and Frank Tarzanin  
Maxwell Thoeni  
William Thomas  
Thomas Thompson  
William Thompson  
Gina Tomkowich  
Elizabeth Townsend  
Marian Tracey  
Linda Traver  
Jane Trentacoste  
John Urofsky  
Tom and Patricia Vernon

Alec Vidal  
Lorine Vogt  
Deborah Volkmer  
Sandra Vonderling  
Ann Walker  
Bo Wang  
Tom and Beth Warms  
Donna and Jay Warshaw  
Barbara Wasserman  
Ellen Wasserson  
Melinda Watts  
Linda Waxler  
Shelly and Fred Weiner  
Renee Weisband  
Theodore Mann  
Rashida Wellbeck  
Suzanne L. Weston  
Bob and Ellen Willoughby  
Anne Wittkamp  
Leon and Phyllis Wolf  
Hon Wong  
Robert Woodcock and Sally Leiderman  
Jodie Yanno  
Barbara Yorke  
Dina Zimbardi  
Pamela Zitta  
Heidi Zod

## \$75-\$124

Anonymous (6)  
Anonymous, in Honor of  
Betsy Oliphant Ross (3)  
Lawrence Abel  
Eileen Abel  
Carole Abercauph  
George Ahern  
Diane Ajl  
Hilary Alger  
Peter Allen  
Barbara Amstutz  
K. Anderson  
M. Faith Angell  
Jay Anstee  
Patricia A. Armitage  
Nancy Atchison  
Rosalie August  
Dr. Rita Axelrod  
The Babilonia Prunés Family  
Cecil Baker  
Pam and Earl Ball  
Rebecca Baranowski  
William Barcklow  
Marlene Bareiss  
Joseph Bartman  
Carolyn and George Bassett  
Fred Baurer  
Oksana Baydina  
Frances and Michael Baylson  
Jim Becker  
Jennifer Bell  
Megan Bellwoar and Michael Hollinger  
Michele Bennett  
Livia Berardi  
Irene Berkowitz  
Connie and Dick Berman  
Estelle Blaustein  
Amy Bleakley  
Jocelyn Block  
Joshua Bloom  
Thomas Boghosian  
Linda and Andy Borson  
Iris Boshes  
Marcia Bower  
Amy Bowers  
Hazel Bowers  
Erin Boyle

Brian Boyle  
Virginia Brabender  
Stanton and Jill Braid  
Karen Bramblett  
Joseph and Mary Lou Breidenstine  
Terrence Brennan  
Jennette Brian  
Kathleen Brooks  
Ted and Susan Broom  
Robert Brophy  
Doris Broudy  
Patricia C. Brown  
Elijah Brown  
Joshua Browns  
Ethelyn Brownstein  
Cathy and John Bryck  
Michael P. Buckley and Mason Barnett  
Joanne Burak  
Nora Burrigide  
Peter and Miriam Burwasser  
Dorothy E. Byrne  
Francis and Mary Calter  
Virginia\* and Samuel Cameron  
Anthony and Jaque Camp  
Andrea Caniglia  
Carolyn Cannuscio and Daniel Rader  
Stephen Capadona  
Lise and Dick Carr  
Kim Carson  
Joseph Casey^  
Stuart Charmé  
Kathy Chase  
Janet Cherry  
Ed Chew  
Susan Chisholm  
Emily Cieri  
Dionna Clanton  
Ivor Clark  
Karen Clark  
Tom Clark  
Helene Cohen  
Judy Cohen  
Beth Cohen  
Jacquelyn Cohen  
John Collett  
Barbara Collier  
Patricia Comfort  
Janet Connor Love  
Peggy Conver  
\*Gerard and Cheryl Conway  
John Cooke  
Jeff Cooper  
Sarah Cooper Searight  
Elizabeth Cornman  
B. Karen Coyne  
George Craig  
Heather Crane  
Sarah Crawford  
Marie Cruz  
Veronica Cuccinotta  
John Dale  
Barbara and David Curtin  
Ms. Dorothy Dalton  
Cynthia D'Ambrosio  
Barbara A. Daneluzzi  
Cheryl Dannenbriant  
Benjamin D'Annibal  
Beth Darrow  
Gilbert Davis  
Susan Davis  
Thomas and Eileen Davis  
Ms. Elizabeth Deegan  
Paul Deigendesch  
Catherine Del Duca  
Cordelia and Don Delson  
Michelle Denburg



# Thank You to Our Supporters

Nancy and Nishan Dersimonian,  
In Honor of Clayton Tejada and  
Arden Front of House Team  
Kathleen Detreux  
Rhoda Dickey  
Ray Didingier  
Judy Dinn  
David Donaldson  
Frank and Sara Donnelly  
Bill Dooley  
Rosanna Dorazio  
Alexander Dragovich  
Daniel Drexler  
Robert and Renee Dubin  
Carol Dudnick  
John Dulik and Sandra Folzer  
Marian Duncombe  
Alice Dungan  
Faith Edelman  
Michael Edelman  
Richard Egan  
Larry Eichel  
Susan Ellenberg  
Selma Ellis  
Jason and Jennifer Ellsworth-Aults<sup>^</sup>  
Dr. Beverly Emanuel  
Linda Emerick  
Jack Ende  
Wendy Epstein  
Karen Ernst  
Alan Ettenson  
Dorothy Evensen  
Sonja and Thomas Eveslage  
Anne and Steven Fassler  
Lona Farr and David Voellinger  
Nancy Featherstone  
Cari Feiler Bender and Rodd Bender  
Winifred Fessenbecker

Jeff Filipkowski  
Jill Fink  
Leila Finkelstein  
Cindy Fishman<sup>^</sup>  
Pamela Fisk  
Tamara Forstater  
Kathleen A. Foster  
Abbe Fox  
John and Elaine Frank  
Alexandra Frank  
Ms. Judy Frank  
Allyson J. Frank  
Diane Frankel  
Susan and Paul Frederic  
Barbara Freed and Alan Mittelman  
Rebecca Freedman  
Fran Freedman and Job Blum  
Paulette Freeman  
Martha Friedman  
Martin Friedman  
Marie Fritzinger  
Abraham Gafni  
Ofelia Garcia  
Dr. Stephen and Ardith Garland  
Lisa Gates  
Jenna Gavaletz  
Charles Gear and Anna Lee Morgan  
Marguerite Geiger  
Mary Geisz and Keith Pryor  
Coeli Genter  
Eric Gerstel  
Gwen and Alvin Gilens  
Marylouise Gladish  
Philip and Karen Glick  
Ms. Etta Glickman  
Marion Goldberg and Paul Keller  
Brian Goldsmith  
Heather Golin

Jacqueline Gonatas  
Bob and Jan Gross  
Marie Gottschalk  
Rick and Sharon Graham  
Phillip Graneto  
Joshua Grant  
Donna Grasson  
Ellen Greco  
Cheryl Green  
Mark Greenberg  
Alan and Sara-Ellen Greenberg  
Joan Greenfield  
Kaitlin Gregory  
Adam Gress  
Stephen Griffey and Melinda McGough  
Frances Grubb  
Joanne Guarnieri  
Dan Gutierrez  
Mr. Mark Haas  
Emma Halpert  
Teresa Hanssens  
Mary Kate Harkins  
Jessica Harms  
Russell Harris  
Shelley Harris  
Barbara Harris  
Carol Harrison  
Palmer and Judith Hartl  
Libby Harwitz and  
Burton Blender  
Gail Hauptfuhrer  
Susan Havens-Lang  
Jenn Hayden  
Virginia Hayes  
Kenneth Heiings  
Pratrice Heller  
Irene Hempstead



Get closer to the artistic work



Ensure arts access to children in Greater Philadelphia



Enjoy an engaged community of theatre enthusiasts!

## Become a Sylvan Society Member

With an annual donation of **\$1,000 or more**, Sylvan Society members are the roots that keep the Arden grounded and stable, while allowing our people, programs, and purpose to grow and thrive.

By joining our community of leadership donors you'll enjoy concierge services, exclusive access, and recognition for a full year.

Join the  
Sylvan Society or  
learn more here:



[ardentheatre.org/sylvan](http://ardentheatre.org/sylvan)

To learn more, please contact Orelí Uzdavinis at 215.922.8900 x131 or [uzdavinis@ardentheatre.org](mailto:uzdavinis@ardentheatre.org)

# Thank You to Our Supporters

Stuart Henderson  
Angela and Michael Hennessey  
Don Henry  
Abe Henry  
Trudi and Irv Herman  
Dr. William Herring and  
Mrs. Patricia Herring  
Leigh Ann Hewston  
Kirsten Hickerson  
Barbara Hilgen  
Mershon Hinkel  
Mrs. Elizabeth Hollinger  
Hollie and James Holt  
Dr. David O. and Patricia Holtz  
Marie Horchler  
Dr. Mindy and Jay Horrow  
Caren and Stuart Hosansky  
Chris Hoyler and Bob Jackson  
Lynda Hubbell  
Michelle Hudson  
Kevin Hunt  
Ellen Huyett  
Evelyn Rosen  
David and Sylvia Jacobs  
Greg Jaffe  
Dr. and Mrs. William Jantsch  
Rebecca Jarosh  
Stacey Jarrell  
Rosemary and Ejner Jensen  
Leah Johnson and Damien Suqarrell  
Daniel Johnson  
Phyllis Jones  
Warren Joseph  
Edward Kahn  
Lisa Kahn  
James Kaib  
Ellen Kaplan  
Patricia Kapur

Dr. Rhonda Karp  
Judy Kastenberg  
Mimsye Katz  
Lucy Kaufman and Matt Lockwood  
Jennifer Kay  
Joyce Kay  
Kara Keenan Sweeney  
Chris and Bridget Kelleher<sup>^</sup>  
Frances and Paul Kende  
Megan Kennard  
Barbara Kessler  
Toni and Herbert Kestenbaum  
Robert and Susan Kettell  
Julia Kharlip and Oleg Teytelboym,  
In Honor of Every Brilliant  
Thing Production  
Christina Kind  
Charles King  
Jay and Bebe Kivitz  
Marlena Kleit  
Rita Klinger  
Veronica and Gary Klocek  
Margaret Klock  
Barbara Klock  
Lorraine Kobeski  
Jerry and Deena Koffler  
Theodore and Amy Kokas  
Ellen Kopeland  
Judith Kornfeld  
Christine Kozsuch  
Alysa Krain  
Nassya Kravevska-Owens  
Shira Kramer  
Dr. Hillary Kruger  
Will Kumpas  
Christopher Kurtz  
Daniel Lai  
Debby Lamanna

Lois Landis  
John Landreau and Sherri Grasmuck  
Joan Lapayowker  
Melanie LaPenta  
Sigrid Larson  
Martin and Hannah Laufe  
Gretchen Lea  
Alexandria Leitao  
Joe Leonard  
Maria Lerman  
Darlene Levin  
Howard and Susan Levinson  
Michael L. Levitan  
Rafael Levites  
Madeline Levy  
Bella Lewensohn Schafer  
Joanne Lewis  
Mr. Darryl L'Heureux  
Patricia Lima  
Barbara Lincow  
Daniel and Kathleen Lipinski  
Linda Litwin  
Nadine Lomakin and Michael  
McPhilly  
Nancy Ludgus  
Melissa Lukach  
Robert and Patricia Lynam  
Colleen W. Marano  
Bob and Sue Ann\* Marburg  
Terry Ann Marek  
Mary and Jack Markov  
Randi Marrasso  
Barbara J. Marshall,  
In Honor of Barbara Marshall  
Jane Martin  
Linda Martin  
Nancy Martin  
Terry and Lyle Martin-Murley

## A NEIGHBORHOOD BISTRO NESTLED IN THE HEART OF OLD CITY



LUNCH | DINNER | BRUNCH  
52 S 2ND STREET

**10% OFF FOR ARDEN PATRONS**



**ROYAL BOUCHERIE**

# Thank You to Our Supporters

Robert McCarthy  
Chris McDowell  
Vicki McGarvey  
Margaret E. McGovern  
Brian McGraw  
Kim McKnew  
John McMillian  
Donette McPoyle  
Andrea D. Meals  
Meryle Melnicoff  
Mark Mendenhall  
F. Michel  
Faith and John Midwood  
Emily Mikesell  
Linda Mill  
Joyce and Mark Miller  
Danny Miller  
Lina Minicucci  
Ann Mintz and Clifford Wagner  
Laurent Moe  
Melinda Montanaro  
Brad Moss and Laurie Gottlieb,  
In Honor of Harvey Swedloff  
David N. and Laurel S. Mosteller  
Geraldyn Moyer  
Theodore and Theresa Munz  
Judith Nagle  
Linda Naskret  
Mara Natkins  
Debbie Neibauer  
Pamela Nelson  
Hillary Nelson  
Paula and Lawrence Ninerell  
Marta Nolan-Alley  
Pat Nolan  
Daniel and Jeannette Norris  
Janet and Dennis Novack  
Margaret Olson

Jenna Olszak  
Jeanne Omans  
Hugh O'Neill  
Nicole and James Onesti  
Shawn Orr  
Julie and Eric Orts  
Stanton S. Oswald and Phyllis Weber  
Douglas L. Overton  
Michael Palazzo  
Blair Pallas  
Deborah West Panagacos  
Brian Parker  
Emelie Passow  
Anne and Ted Patterson  
Alisa Peet  
Kristen Perlman  
Marthenia Perrin  
Belinda Peterson  
Bill Pfeifer  
Anna Phillips  
Karen Piercy  
Lucille Pilling  
Jaye Pinch  
Deborah Pines and Carl Perchonock  
Ronnie Pleet  
John and Victoria Podolski  
Regina Poletti  
Amy Polis  
Steven Portman  
Dr. Tom and Candace Pratt  
Pamela Quinn  
Timothy and Joyce Ratner  
Paul and Ellen Rawicz  
Kathleen Regan  
Krista Reichard  
Ms. Mary Reinhart  
Rosemarie Retacco  
Michael Riccardi

John and Virginia Rice  
Kenneth Richman  
Dana Ridley  
Jacqueline Riedel  
Elisa Riesenbach  
Fran Rissmiller  
Marjorie Robbins  
Eve and Charles Robbins  
Robert Robinson  
Barbara and Anthony Rooklin  
Beverly Rosen  
Maxine Rosen  
Martin and Carol Rosenblum  
Dean Rosencranz  
Alexis Rosenfeld  
Elyn Rosenfeld  
Libby Rosof and  
Murray Dubin  
Nina Rossi  
Linda Rouse  
Edward and Elizabeth Rubenstone  
Desiree Salera  
Robin Sampson  
Katherine Sanderson  
Vicki Sarnoff  
Vicki Satinsky  
Matteo Scammell  
Carole Schaefer and  
Richard Charney  
Karyn L. Scher  
Jordan Schilling  
Jane Schloss  
Ken Schmitt and  
John McCormick  
Linda Schneider  
Patty Schoelkopf  
Jennifer Schwartz^  
Robert Schwartz



Pictured: Education intern Mars Berger assisting students and teachers during an Arden Drama School class.

## Intern at the Arden

This spring, our Dr. Mindy Goldberg Rose intern has been Mars Berger, a filmmaker, director, and arts educator who recently graduated from the University of Pennsylvania. Mars is a Philly local who grew up coming to the Arden, and credits our company with sparking their love of theatre.

During their time here, they've built audience accessibility resources and taught students at Arden Drama School.

"The Arden is a company centered on a big-hearted community, which makes it a great workplace and an even better theatre! It's so refreshing to find an arts organization and educational space that believes creativity belongs to everyone." -- Mars Berger

The **Dr. Mindy Goldberg Rose Internship Fund** is made possible thanks to the generous leadership support of Charlie Rose, in honor of Dr. Mindy's commitment to education, the arts, and making lives better.

**Inspired by Mindy's commitment to the future of theatre?  
Add your support by donating today:**



# Thank You to Our Supporters

Gail Scott and  
 Thomas D. Quinlan  
 Patricia Scott Hobbs  
 Hideko Secrest  
 Henry Seigel  
 Annilee Seitchick  
 Deniz Selman  
 Kathleen Senkow  
 Karen and Bob Serenbetz  
 Barbara Shapiro  
 Gioia Sharp  
 David W. Sharp  
 Wendy and Matthew Shilling  
 Laura Shook  
 Hedvah Shuchman  
 Marilyn Sifford and Robert Butera  
 Donald and Marilyn Silberberg  
 Eunice Silver  
 Caroline Simon  
 Ms. Karen Singer  
 Judith Skillings  
 Carleene and David Slowik  
 Dennis Raymond Smeal  
 Ariana Smith  
 Bruce and Penny Smith  
 Colleen Smith  
 Joseph Smith  
 Kathleen Smith  
 Georgia A. Smyth  
 Wayne Snover and Janet Tebbel  
 The Snyder Family  
 Emily Soloby  
 Vicki and Evan Solot  
 David and Liza Spaventa  
 Heather Speirs  
 Margaret R. Spencer  
 Pamela Spiller  
 Gary E. Stahl and  
 Deborah S. Stahl  
 Dionne Stanfield

Konnie Stark  
 Ms. Naomi Starobin  
 Paul Steinberg  
 Dr. Christina Stasiuk<sup>^</sup>  
 Joel and Barbara Stewart  
 Louise and David Strawbridge  
 Fred Stuart  
 Kathleen Sullivan  
 Elizabeth Svenson  
 Gary and Betty Szatkowski  
 Cheryl Taddei  
 John Tarves  
 Elizabeth Taylor  
 Sandra Telep  
 Letty Thall  
 Hannah Thomas  
 Cinnamon Tinsley  
 The Tobias Family  
 Charles Todd  
 Elizabeth Torres  
 Richard Trama  
 William Travis  
 Joan and Tom Tropp  
 Janize Ulzheimer  
 Carol Usonis  
 Carol R. Vahlstrom  
 Heather Van Horn  
 Darrell Velegol  
 Valeria Vasilevski  
 Cynthia L. Vena  
 Larry Viezal  
 Frank and Carol Vita  
 Lona Farr and David Voellinger  
 Ian Wachstein and Michele Zeldner  
 Jonathan Waller  
 Thomas Wand  
 Elizabeth Warner  
 Ellen Watson  
 Jacqueline Weber  
 Harri Weinberg

Taube and Sam Weinberg  
 Margo Weishar  
 Carol Weisl  
 Kate Weiss  
 Lenore Weissberg  
 Sharon Wellons  
 Liz Welsh  
 Shannon Welsh  
 Gary Whitley  
 Robert C. Wickline  
 Howard Wiener  
 Kendal Williams  
 Carol Williams  
 Dora and Oscar Wilsker  
 Laura Windham  
 Linda Wingate  
 David Winikur  
 Angela and Michael Winterrowd~  
 Marcia Witlin-Basickes  
 Arnold Wolf and Fern Tablin  
 Margaret Wyant  
 Sam and Kuna Yankell  
 Brian and Marion Young  
 Loretta Young  
 Chris Young  
 Marc and Pam Zisselman  
 Esther Zoblin  
 Jennifer Zwetolitz

\* Denotes a deceased supporter  
 + Denotes a gift of goods or services  
 ^ Includes a matching gift  
 ~Includes a monthly gift  
 This list represents gifts made through  
 May 3, 2024

## FORK

LUNCH BRUNCH & DINNER



306 MARKET ST PHILA | FORKRESTAURANT.COM

# Thank You to Our Supporters

## ***Gifts in Memory Of...***

### **TOM BEAM**

Carol Beam

### **MARY ELLEN CONABOY**

Barrie duBois

### **ERNEST CUFF**

Ellen Deacon

### **MARJORIE DICKEY**

Rhonda Dickey

### **JERRY E FREEDMAN**

Sherri Freedman

### **LEONA E. GRAHAM**

Rick and Sharon Graham

### **JAMES J. HANEY III MD**

Anonymous (4)

Sherri Becker

Christopher Bradie

Beth Darrow

Janice Dathe

Frank and Sara Donnelly

Bill Dooley

Ann Marie Fritz

Coeli Genter

Richard Graham

Joanne Halscheid

Jennifer Heist

William Herring

Michael Johnson

Kenneth Klein

Madeline Levy

Geralyn Moyer

Brett Murphy

Barbara Rubel

Lindsay Seelig

Karen Ulmer

Frank and Carol Vita

Richard Wesh

Debra Whitby Norman

### **LUCKY HERTFELDER AND SHARON CLAUSON**

Heidi Hertfelder

### **MARY C. KEENAN**

Kara Keenan Sweeney

### **MILT AND ROZ KLEIN**

Ken, Eva and Aaron Klein

### **JOHN KOSCELNIK**

Valerie Koscelnik

### **SHEILA KUTNER**

Dr. Beverly Emanuel

### **NANCY LANG BOYER**

Mary Ann Boyer

### **WENDY AND BILL MACLAUGHLIN**

Catharine Slusar and

Whit MacLaughlin

### **SUE ANN MARBURG**

Bob Marburg

### **MOXIE MCCUTCHEON**

Celestine Silverman

### **MIRIAM NORRIS**

Daniel and Jeannette Norris

### **KRISTIN OSGOOD LAMELAS**

Diane Hlywiak, Esquire

### **GEORGE AND DOLORES OTTINGER**

Stephen and Kathy Thompson

### **RICHARD REPETTO**

Dan Rothermel and

Michael Hairston

### **ANNIE RICHARDSON**

Anonymous

### **JULIAN ROSTAIN**

Anthony Rostain

### **GEORGE R. SZYMANSKI, ESQ.**

Dr. Dolores Szymanski

### **JOEL SEIDEL**

Anonymous

### **GERI TALLONE**

Scott and Lynda Glading

### **CHRISTINA VAUGHT**

Colleen Hulse

Regina Poletti

Deborah Proto and

Kimberly Saccucci

Cindy and Randy Simatic

David and Liza Spaventa

Sharon and Jim Wheeler

### **ASTER WAMSER**

Polly Shaffer

### **SAMUEL WEINBERG**

Taube and Sam Weinberg

### **FRED AND ARLEEN WEINSTEIN**

Judy and Palmer Hartl

### **CASEY ZEFF**

Eileen Heisman and Marty Tuzman

## ***Gifts To Named Funds...***

### **NAMED SEATS THIS SEASON**

Anonymous

George J Ahern

Megan Bellwoar and

Michael Hollinger

Marianne and Donald Green

Stephen and Laura Harrison

Joseph Pinto

Matthew Pinto

Thomas Pinto

Ann Pinto McCarney

Rudy Sprinkle and Andrea Barsevick

Robert and Lisa Trucksess

Joyce Weiner and Albert Tedesco

### **ANDREA MENGEL FUND**

Derick Dreher

Independence Foundation

Susan Sherman

### **ARTISTIC FUND**

Morna Livingston

### **ANN B. MCNAMEE FAMILY THEATRE FUND**

Dennis and Louise Buckley

Dennis and Melissa Rodkin

Robert and Joan McLaughlin

### **THE BRODIE FAMILY, IN HONOR OF DR. MAMA'S RETIREMENT**

The Brodie Family

### **THE DR. MINDY GOLDBERG ROSE INTERNSHIP FUND**

Josh Asher

Larry Cohen

Nancy and Bob Elfant

Equitable/ AXA Foundation

Kate and Barry Muchnick

Ellen Panofsky and Mark Noel

Jon Panofsky

Dr. Allison Rose and Mr. Josh Rose

Charles Rose

Heidi and Mitchel Rubin,

In Honor of Nathan Dorman

Dorothy Sheridan

### **THE BERNARD AND CAMILLE ROSENBERG FAMILY THEATRE FUND**

Bernard and Camille Rosenberg

# Board and Committee Members

## Board of Directors

Michael A. Donato, *President*  
Rayenne Chen, *Vice President*  
Rhonda Ball, *Vice President*  
Michael S. MacFarland, *SVP,*

*Treasurer*

Richard L. Maimon, *Secretary*

Kelly Colarelli

Anne Cook

Joy L. De Jesús

Robert Elfant

Nancy Elfant

Elizabeth A. Fernández-Viña

Elizabeth H. Gemmill

Peter Hamilton

Jen Harmelin

Richard Harris

Valerie I. Harrison

Ann Marie Horner

Holly Kinser

Dr. Saifuddin T. Mama

John J. McCawley, P.E.

Amy L. Murphy

Terrence J. Nolen

Hon. Rosalyn K. Robinson

Charles H. Rose

Monica Rosenthal

Genieve Shields

Lee van de Velde

Steve Wolfson

Diane Dalto Woosnam

Ellen Yin

## Board Executive Committee

Michael Donato, *Chair*

Michael MacFarland

Rhonda Ball

Rayenne Chen

Anne Cook

Joy L. De Jesús

Robert (Bob) Elfant

Holly Kinser

Richard L. Maimon

Lee van de Velde

## Finance Committee

Michael MacFarland, *Chair*

Juan De León Domenech

Anne Marie Horner

Dan Hilferty

Daniel Krewson

Eliza Orleans

Harvey Swedloff

Steve Wolfson

## Board Development Committee

Rayenne Chen, *Chair*

Michael Donato

Robert Elfant

Joy L. De Jesús

Holly Kinser

Saifuddin T. Mama

Lee van de Velde

Diane Dalto Woosnam

## Personnel Committee

Rhonda Ball, *Chair*

Michael Donato

Elizabeth H. Gemmill

Richard Harris

Michael S. MacFarland

Charles H. Rose

## Engagement Committee

Lee van de Velde, *Chair*

Anne Cook, *Chair*

Elizabeth Fernández-Viña

Nancy Elfant

David Hackney

Camille Rosenberg

Lillian Ransom

Hope Yursa

## Facilities Committee

Richard L. Maimon, *Chair*

Mike Green

James Kronzer

John J. McCawley

H. Hetherington Smith

Chris van de Velde

## Equity, Diversity, and Inclusion (EDI)

Rayenne Chen

Anne Cook

Joy L. De Jesús

Robert Elfant

Kash Goins

Richard Harris

Dr. Valerie Harrison

Zuhairah McGill

Amy L. Murphy

Bi Jean Ngo

Terrence J. Nolen

Hon. Judge Rosalyn

Robinson

Clayton Tejada

Orelí Uzdavinis

## Young Friends Committee

John Connolly

Elizabeth A. Fernández-Viña

Aby Rodríguez



all you need is fresh flowers

WWW.NEFLOWERBOUTIQUE.COM  
NORTHEASTFLOWERS@GMAIL.COM  
@NE\_FLOWER\_BOUTIQUE

OLD CITY  
(267)570-7707  
60 N 2ND ST

NE PHILLY  
(215)437-1913  
11702 BUSTLETON AVE

NE FLOWER BOUTIQUE  
www.neflowerboutique.com

# Staff

Artistic	Producing Artistic Director.....	Terrence J. Nolen
	Associate Artistic Director.....	Jonathan Silver
	Artistic Assistant.....	Nick Hatcher
	Commissioned Playwrights.....	Lorene Cary, Kash Goins, Robi Hager, Rogelio Martinez, Iraisia Ann Reilly
Administrative Management	Managing Director.....	Amy L. Murphy
	General Manager.....	Clayton Tejada
	Business Manager.....	Paola Cruz
	Audience Services Manager.....	Tanner Richardett
	Facilities And Office Manager.....	Larry Brooks
	Arden Professional Apprentices.....	K.C. Casey, Laura Duffy, Meili Huang, Tomas Torres
Marketing	Director of Marketing and Communications.....	Mike Hogue
	Marketing Manager.....	Erika Byrnison
	Publicist.....	En Route Marketing
	Marketing and Group Sales Associate.....	TJ Harris
Development	Director of Development.....	Jessica Abel
	Manager of Individual Giving.....	Orelí B. Uzdavinis
	Manager of Institutional Giving.....	Matthew Reddin
	Development Coordinator.....	Tylar Benedetto
Education	Director of Education and Community Outreach.....	Hannah Cordes
	Education Outreach Manager.....	Josh Thorps
	Arden Drama School Manager.....	Elise D'Avella
	Teaching Artists.....	TJ Harris, Campbell O'Hare, Brennen Malone, Donovan Lockett, Mariah Ghant, Liz Crino, Kennedy McAlister, Jessica Money, Taylor J Mitchell, Julianna Babb, Cindy Paul, Hannah Catanoso, Grant Uhle, Nicole Renna, Andrea Rose Cardoni, Jennifer Peacock, Giavanna Genovese, Justin Yoder, Seraina Schottland, Foster Longo, Danny Walsh, Jessy Gruver, Francine Odri, Marie McVeigh, Bari Rose Secondino, Brianna Arce, Nic Ecker, Bi Jean Ngo, Katherine Perry, Gina Giachero, Aadaeze Nwoko, Eliana Fabiyi, Adam Howard, Ryan Touhey, William Daniels, Jordan Hunter-Fidalgo, Tanaquil Márquez, Abby Weissman, Ella Kahan
	Box Office Manager.....	Jason Blacketer
	Assistant Box Office Manager.....	Amanda Adams
	House Manager.....	David Demnicki
	Front of House Associate.....	Ryn Bondi
	Front of House Assistants.....	Becky Fleckner, Catey Midla, Chelsey Gaskins, Emily Hernandez, Glynnis Nadel, Ian Gaskin, Kat Pilkus, Margaux Cattelona, Syaera Cort, Will Vence Jr., Victoria Zdunkiewicz
	Production	Production Manager.....
Technical Director.....		Evan Lewis
Assistant Technical Director.....		John Winter
Charge Scenic Artist.....		Kristina Chadwick McGrath
Electrics Supervisor.....		Martin Stutzman
Sound Supervisor.....		John Kolbinski
Costume Supervisor.....		Stephanie Shaw
Properties Supervisor.....		Shane Dreher
Assistant to the Stage Manager.....		Tomas Torres
Audio Engineer.....		John Kolbinski, Darren West
Wardrobe Supervisor.....		Ryn Smith
Deck Crew.....		Luis Feliciano
Young Actor Supervisor.....		Jess Merkins
Company Safety Officers.....		Clayton Tejada, Jonathan Silver
Electricians.....		Emily Muirhead, Meghan Moore, Myles Martin
Electrics Programmers.....		Brittany Chato, Ana Crawford, Isabella Gill-Gomez
Carpenters.....		Anna Ryabova, Ivan Dellinger, Jo Vito Ramirez, Luis Feliciano
Stitchers.....		Peter Adams, Amanda Carano
Dr. Mindy Goldberg Rose Intern.....	Faith DeShields	
Workshop U Intern.....	Leraun Smith	

# CREATIVE REAL ESTATE FOR CREATIVE PEOPLE



## Happy Clients

Charlie DelMarcelle  
Barrymore Award  
Winning Actor  
Katherine Fritz  
Costume Designer



**BENJAMIN CAMP**

**REALTOR® & CCSJ Team Leader**  
*Actor & Producer*



**JAMES SUGG**

**REALTOR®**  
*Actor & Sound Designer*

The CCSJ Team is proud to continue our *Support the Arts Initiative*, donating to local performing arts organizations for every closing. Whether you're on-stage, behind the scenes, or in the audience, choose the REALTOR®s who support our arts community.



Contact  
Benjamin



📞 610.220.8550  
📧 ben@ewrhomes.com



Contact  
James



📞 267.303.2827  
📧 sugg@ewrhomes.com

215.893.9920

THESTELLARCHOICE.COM | ELFANT WISSAHICKON  
2000 PINE ST, PHILADELPHIA, PA 19103

Elfant   
Wissahickon  
- REALTORS® -