

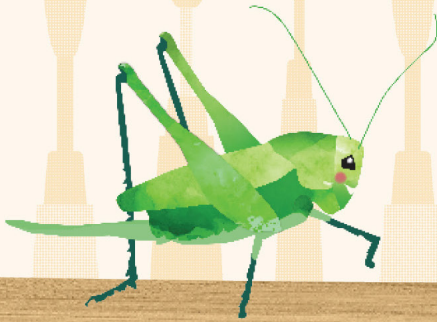
ARDEN CHILDREN'S THEATRE

PINOCCHIO

By **Greg Banks**

Based on the story by **Carlo Collodi**

Produced by special arrangement with
Plays for New Audiences



Arden
THEATRE CO.

APR 10 – JUN 2

On the Arcadia Stage

Honorary Producer:
Elizabeth Gemmill

ARDEN **SUMMER** CAMP

For Kids and Teens

Action packed and taught by
theatre professionals!

Learn more and register online at ardentheatre.org



**"My camper had a blast!
They came home every day ready to share about their day,
and their creative thinking and expression
blossomed throughout the week."**

-Arden Summer Camp Parent

ARDEN CHILDREN'S THEATRE

PINOCCHIO

By **GREG BANKS**

From the story by **CARLO COLLODI**

Produced by special arrangement with

Plays for New Audiences

Set Designer
SASHA JIN SCHWARTZ

Costume Designer
LEIGH PARADISE

Lighting Designer
MARIA SHAPLIN

Composer/Sound Designer
ALEX BECHTEL

Stage Manager
JASON WEIXELMAN*

Assistant Director
JESSICA MERKINS

Directed by **REBECCA WRIGHT**

April 10 - June 2, 2024

Honorary Producer: Elizabeth Gemmill

THE VIDEOTAPING OR MAKING OF ELECTRONIC OR OTHER AUDIO AND/OR VISUAL RECORDINGS OF THIS PRODUCT AND DISTRIBUTING RECORDINGS OR STREAMS IN ANY MEDIUM, INCLUDING THE INTERNET, IS STRICTLY PROHIBITED, A VIOLATION OF THE AUTHOR(S)'S RIGHTS AND ACTIONABLE UNDER UNITED STATES COPYRIGHT LAW.



Arden Theatre Company receives state arts funding support through a grant from the Pennsylvania Council on the Arts, a state agency funded by the Commonwealth of Pennsylvania.



+ Member of United Scenic Artists
Local USA 829

* Member of Actors' Equity Association,
the Union of Professional Actors and
Stage Managers in the U.S.



^ The director is a member of the Society
of Stage Directors and Choreographers,
Inc., an independent national labor union.

A Message

From our Honorary Producer



Greetings, and welcome to the Arden!

I am so pleased to support Arden's 2023/24 season as Honorary Producer of this lively adaptation of *Pinocchio*. You may know the traditional folktale of the wooden puppet who wants to be a real boy, but this fast-paced and dynamic production brings new depth and meaning to a

beloved story. This fun-filled play is sure to captivate while also reminding us of the importance of truthfulness, loyalty, and what makes a person "real" and whole. I think that's a message that both the young and young of heart can appreciate!

I am proud to support the Arden as a patron, donor, and board member. In particular, Arden Children's Theatre holds a special place in my heart. I still happily recall the Arden's imaginative production of *Peter Pan*, the timeless tale of the boy who never grew up. It sparks wonder in children and adults alike with its themes of adventure, bravery, and the importance of cherishing childhood. I still want to clap when Peter asks the audience if they believe in fairies. Now more than ever, our children need opportunities to experience the joys and benefits of seeing stories come to life through live performance. Through their work on stage and in classrooms across Greater Philadelphia, the Arden inspires creativity, builds critical skills, and encourages lifelong cultural participation for the next generation.

I'm so glad you've chosen the Arden as a place to share the joy of live theatre with the kids in your life. Enjoy the performance!

Elizabeth Gemmill

ACCESSIBILITY SERVICES

The Arden complies with all applicable federal, state, and local statutes and laws to ensure accessibility to individuals with disabilities who visit our theater. We invite you to visit ardentheatre.org/plan-your-visit/accessibility for more details about our services and offerings.



Accessible Seating & Seating Requests

Removeable seats for wheelchairs & Accommodations for comfort, mobility, & hearing or vision needs



Assistive Listening Devices (ALDs)

Amplification of all onstage sounds. Ask Box Office to borrow. Available with headphones or a t-coil neck loop.



Open Captioning (OC)

Text display of all dialogue and sounds. Available select Friday & Saturday performances.



Audio Description (AD)

Live verbal commentary of all visual elements. Ask Box Office for access. Available select Friday & Saturday performances.



NEW! Smart Caption Glasses (SCG)

Wearable, customizable closed captioning glasses. Available 1 week after Opening Nights. Ask Box Office to borrow.



Large Print Programs

Enlarged-text printed programs for low-vision patrons. Ask Box Office to borrow.



Shadow American Sign Language (ASL) Interpretation

Live ASL interpretation shadowing the action of the show. Available at select Children's Theatre performances.

We encourage any feedback and suggestions regarding our accessibility services to ensure we're doing the best we can. Please contact Tanner Richardett, Audience Services Manager, at trichardett@ardentheatre.org

WELCOME

From the Producing Artistic Director



Arden Children's Theatre is about sharing great stories with kids and their teachers and families. All kinds of stories. New stories, musical stories, adventure stories. Stories about giants, and Neverland, and a humble pig.

One of our favorite things to do is to find new ways to tell classic stories. Classic stories are stories that everyone knows. *Pinocchio* is a classic story. It was written by an Italian writer whose name was Carlo Collodi in 1883. Over 140 years ago.

You know *Pinocchio*. Maybe you've read it. Or seen the movie. Or the Disney version.

Today, we are telling a new version of *Pinocchio*. And it's special because it is created by a group of actors and designers and crew members just for you. A story that is over 140 years old being told in a new way, right here, right now. Just for you.

We have lots of opportunities for you to learn more about theatre in our classes and camps. We have classes in acting, singing, comedy. We have classes where you make your own play. We have Arden Summer Camp where you can spend a whole week being creative and having fun! There is more information at ardentheatre.org. If you have any questions, reach out to our Director of Education & Community Outreach Hannah Cordes at hcordes@ardentheatre.org.

Thank you for coming to see *Pinocchio*. We hope you like our play. Let me know what you think. And if you have ideas for other stories we should do, please let me know. You can email me at tnolen@ardentheatre.org or drop a note off at the box office!

Director's Note



Have you ever made a pillow fort?

You use whatever is around to build something from your imagination and make it real.

Have you ever made a mistake?

Often, you think you're doing the right thing at the time, and it turns out you guessed wrong or maybe didn't have enough information to make a good choice.

Pinocchio is a story about learning to be human. The little wooden puppet gets into trouble, gets lost, gets confused about who his friends are, gets tricked, gets trapped, and, finally, gets home. Through mistakes and misadventures, *Pinocchio* learns to love and take care of the people he loves. This, in the end, is what makes him real.

In our version of the story, a group of painters work together, using whatever is around, to tell *Pinocchio*'s story. They build houses and hills, towns and beaches, oceans and whales from the tools of their trade— cloths, boards, paint brushes, and buckets— to make the story come to life.

After all, imagination is another thing that makes us human. And it's love and imagination that help us make new worlds real. Thank you for coming to the painters' *Pinocchio* world today. We're so glad you're here!

Cast of Characters

Policeman/Cat/Lampwick.....Nathan Alford-Tate
Pinocchio.....Reese Castaldi
Cricket/Showman/Coachman/Old Man.....Anthony Martinez-Briggs*
Geppetto/Fox/Donkey.....Izzy Sazak

UNDERSTUDIES

Bastion Carboni (Cricket/Showman/Coachman/Old Man), Leanna Doyle (Pinocchio),
Tina Gabriella (Geppetto/Fox/Donkey), Brooke Shilling (Policeman/Cat/Lampwick)



Arden Theatre Company is a professional company employing members of Actors' Equity Association.
*Member of Actors' Equity Association, the Union of Professional Actors and Stage Managers in the United States.

Please check houseboards for any program changes.
Taking pictures and/or making visual or sound recordings is expressly forbidden.

Actors' Equity Association (AEA), founded in 1913, represents more than 45,000 actors and stage managers in the United States. Equity seeks to advance, promote and foster the art of live theatre as an essential component of our society. Equity negotiates wages and working conditions, providing a wide range of benefits, including health and pension plans. AEA is a member of the AFL-CIO, and is affiliated with FIA, an international organization of performing arts unions. www.actorsequity.org

NATHAN ALFORD-TATE (*Policeman/Cat/Lampwick*) Arden: *The Snowy Day*. Regional: *Cymbeline* (Delaware Shakespeare); *The American Revolution* (Theatre Unspeakable); *Meet James Forten* (Museum of the American Revolution); *Permission to Monster* (Almanac Dance Circus Theatre); *The Ever Present* (Theatre Exile); *Pipeline* (South Camden Theatre Company); *Rachel* (Quintessence Theatre); *Fourteen* (National Constitution Center); *Fly Eagles Fly* (Tribe of Fools). Education: University of the Arts/Pig Iron, MFA Devised Performance; Western Michigan University, BFA Theatre Performance. Thank you to my family for their continual support and unending faith in me.



REESE CASTALDI (*Pinocchio*) Arden: *Fun Home*. Off-Broadway: *The Elementary Spacetime Show* (Powerhouse Theater), *Poetic Address to the Nation* (Joe's Pub), *Normativity* (NYMF). Regional: *Late Night Snacks* (Bearded Ladies Cabaret), *Cymbeline* (Revolution Shakespeare). Education: University of the Arts, BFA Acting. Barrymore Award and NYMF Award nominee. So much gratitude to everyone at the Arden, my sweet friends, my fam, my love, and my students. For all trans and gender non-conforming young people who just want to be seen as real—we are here, we are real, and we love you.



ANTHONY MARTINEZ-BRIGGS (*Cricket/Showman/Fairy/Coachman/Old Man*) Arden: Dameon in *Sideways Stories from Wayside School*. Regional: Tio in *Fat Ham* (The Wilma Theater). Education: University of the Arts, BFA Acting. Anthony Martinez-Briggs is a member of the band ILL DOOTS, whose music is available on all streaming services. ILL DOOTS was recently featured on PBS/WHYY's children's television show "Albie's Elevator". F. Otto Haas Award for Emerging Artist in 2023. Thank you to my creator, my cast, Becky, my family, my friends and my spouse/best friend, Tess.



IZZY SAZAK (*Geppetto/Fox/Donkey*) Arden acting debut! Arden: Assistant Director for *Red Riding Hood*. Regional: Gynecia in *Head Over Heels* (Theatre Horizon), Dr. Leroy in *I Am Not My Motherland* (Orbiter 3) Education: MFA Pig Iron School and University of the Arts, MFA Advanced Performance; University of Virginia, BA Drama. Izzy Sazak is a Turkish-Colombian-American transdisciplinary artist, theater-maker, educator and facilitator. They are an associate artist of Delaware Shakespeare, and a company member of Applied Mechanics. Izzy is a queer, genderful, eco-feminist-abolitionist, whose art is an investigation of joy, magic and belonging as radical forms of resistance. More about me at izzysazak.com



GREG BANKS (Playwright) Greg's work as an actor, writer and director has taken him all over the world from Singapore to Seattle via the Arctic Circle. Greg's plays include *Tir Na N'og* (Travelling Light/West End, Broadway, Touring Winner of Samuel Beckett Award/TMA nominee for best play for young people 1998), *Why The Whales Came* (Plymouth Theatre Royal/ Theatre Alibi/West End) *Dorian Grey* (American Drama Group/International touring) *Too Many Cooks* (Travelling Light) *Huck Finn*, *Pinnocchio*, *Robin Hood*, *Antigone* (Minneapolis Children's Theatre) *Me and My Shadow* (Theatre Alibi) *Snow Queen* (Norden farm) *Arabian Nights*, *Hanse/n and Gretel*, *Keep on Moving*, (Fair Game Theatre.) He has directed for many companies including The Bristol Old Vic (*Endgame*), The Unicorn Children's Theatre London (*The Wizard of Oz*), Minneapolis Children's Theatre (*Romeo and Juliet*). Winner of the 2009 Ivey award for Direction and voted best play of 2009 by Twin Cities.com, (*Antigone*, *Huck Finn*, *Pinnocchio*, *Robin Hood*) Vedogon Theatre, Moscow (*Comedy Of Errors*) American Drama Group (*The Great Gatsby*.) The Birmingham Stage Company (*Kensukes Kingdom*; nominated for a 2006 T.M.A. award, *Treasure Island*, *Why The Whales Came*), Polka Children's Theatre, (*Just So* by Jamila Gavin) New Perspectives, Travelling Light (*Stones*, *Tir Na N'og*, *Too Many Cooks*), M6 Theatre Company (*Forever*, *Peacemaker*, *Trouble*), I157 Performance Company, Seattle Children's Theatre and The New York State Theatre (*Tempest*, *King of Shadows* by Adrian Mitchell).

REBECCA WRIGHT *she/her* (Director) Arden: *Red Riding Hood*; *Backing Track*; *An Iliad*; *Indecent*. Regional (selected): *Spiritual Experience* (The Private Theatre); *Wig Wag* by Emily Bate; *Head Over Heels* (Theater Horizon); *Perfect Day* (Headlong Dance Theater); *Other Orbits*, *This Is On Record*, *We Are Bandits* (*Applied Mechanics*); *Always the Hour*, *At Home With the Humorless Bastard* (Annie Wilson); *The Wild Duck*, *Saint Joan*, *The Metamorphosis* (Quintessence Theatre Group); *The Gap* (Azuka Theatre); *Peaceable Kingdom* (Orbiter 3); *Marcus/Emma* (InterAct Theatre Company.) New York: *Articles of Faith* (Cynthia Hopkins); *Sarah Flood in Salem Mass* (the flea); *Sophie Gets the Horns* (The Riot Group.) Rebecca is a founding company member of Applied Mechanics, an adjunct professor at the University of the Arts, and a proud denizen of the New Philly Aesthetic. For Vern and Ida, with thanks for helping me practice making forts.

JESSICA MERKINS *she/her* (Assistant Director) Arden: Deck Crew for *Ragtime*, *A Streetcar Named Desire*. Sound Board Op for *School Girls*; *Or*, *The African Mean Girls Play*, *Red Riding Hood*, *Ladysitting*. Regional: Intimacy Director for *Cabaret* (Bristol Riverside Theatre), *Spring Awakening* (Sewer Rats Productions); Automation Technician for *Something Wicked This Way Comes*, *Other World* (Delaware Theatre Company); Wardrobe for *The Complete Works of William Shakespeare (abridged) [revised] [again]* (Pennsylvania Shakespeare Festival), *Agatha Christie's Murder on the Orient Express*, *A Flea in Her Ear* (Resident Ensemble Players at University of Delaware); Deck Crew for *Blackbeard*, *Grand Hotel* (Signature Theatre), *Cinderella: A Musical Panto*, *The Ring of Fire: The Music of Johnny Cash* (People's Light). Jessica is an intimacy director who has been training with IDC Professionals for 3 years and just began the Intimacy Professional Accelerator Program in April, pursuing certification. She has spent the last decade working in various backstage positions in Philadelphia and surrounding areas. Jessica would like to thank Jonny for the opportunity, Becky for her incredible generosity and guidance, and Larry for the initial inspiration. Unending love and gratitude to Mom, Dad, and Casper.

SASHA JIN SCHWARTZ (Set Designer) Arden Debut! Off-Broadway: Set Designer for *Off Peak* (59E59); *My Cousin Nelu is Not Gay* (The Brick). Regional: Set Designer for *Fat Ham*, *What The Constitution Means To Me* (City Theatre), *Dragon Lady* (Pittsburgh Public Theatre), *Selling Kabul*, *Heisenberg* (Northern Stage), *The Thanksgiving Play* (Dorset Theatre Festival), *Dear Jack*, *Dear Louise* (Virginia Theatre Festival). Education: Carnegie Mellon School of Drama, BFA. Recognition: 2023 Prague Quadrennial Featured Emerging Designer, 2022 Theatre Communications Group Rising Leaders of Color Cohort. Website: sashaschwartzscenic.com

MARIA SHAPLIN (Lighting Designer) Maria designs for many Philadelphia-based companies including: Applied Mechanics, The Riot Group, Swim Pony Performing Arts, InterAct Theatre Company, Arden Theatre Company, The Wilma Theater, New Paradise Laboratories, The Berserker Residents, and 1812 Productions. Education: Temple University, MFA; Hampshire College BA Anthropology and Sociology. Maria is the co-founder of Applied Mechanics, a company who devises immersive, multi-narrative performance art. Maria is the recipient of a 2019 Pew Fellowship in the Arts. www.mariashaplin.com

Who's Who

LEIGH PARADISE (Costume Designer) Arden: *Red Riding Hood*, *Ladysitting*. Regional: *Once Upon a Bridge* (Inis Nua); *A Case for the Existence of God* (Theatre Exile), *Crumbs from the Table of Joy* (Lantern Theater Company); *This is the Week that Is* (1812 Productions); *Elephant in the Room* (co-design, Azuka Theatre); *Last of the Red Hot Lovers* (Walnut Street Theatre); *TOWN, TJ Loves Sally Forever* (Theatre Horizon); *Bayard Rustin: Inside Ashland* (People's Light). Leigh Paradise has also worked as a technician in various costume shops throughout the region for over 20 years. Thanks to Stephanie Shaw and the Arden Costume Shop for their help and work, to Kate Coots and others for the painty clothes, and to my family for their endless patience and support.

ALEX BECHTEL *he/him* (Composer/Sound Designer) creates new works of music, theatre, and musical theatre. Arden: *Red Riding Hood*, *Treasure Island*, *A Midsummer Night's Dream*, and *The Light Princess*. Regional: *The Appointment* (Lighting Rod Special, "Best of 2019" - NYTimes/Vulture/TimeOut NY; "Best of 2023" - The New Yorker) *Shakespeare in Love*, *Alice in Wonderland: A Musical Panto* (People's Light), and seven seasons of new music at Pennsylvania Shakespeare Festival. His newest musical, *Penelope*, had productions this year at Hudson Valley Shakespeare Festival and Signature Theatre in DC. See and hear more at alexbechtel.com

JASON WEIXELMAN (Stage Manager) Arden: August Wilson's *Radio Golf*. Broadway: *Wicked*, *The King and I* (2015 Lincoln Center Theater Revival). Off Broadway: *Scene Partners*, *Between the Lines*, *Which Way to the Stage*, *Othello*, *Old Hats*. Regional: Paper Mill Playhouse, Barrington Stage Company, Berkshire Theatre Group, George Street Playhouse, Gulfshore Playhouse, Hudson Stage Company, Skylight Music Theatre, Santa Fe Opera. Workshops: *Midnight in the Garden of Good & Evil*. Love and gratitude to family and friends for their endless support. Proud member of Actors' Equity.

TERRENCE J. NOLEN (Producing Artistic Director) is Co-founder and Producing Artistic Director of Arden Theatre Company. Favorite Arden productions include all-Philadelphia casts of *August: Osage County*, *Death of a Salesman*, *The Grapes of Wrath*, and *Hedda Gabler*; and such musicals as *Next to Normal*, *Sweeney Todd*, *Pacific Overtures*, *Violet*, and *Caroline, or Change*. Terry directed the inaugural production of Arden Children's Theatre, *Charlotte's Web*. He has directed seven world-premiere plays by Michael Hollinger, three by Dennis Raymond Smeal, three by Michael Ogborn, two by Rogelio Martinez, and Bruce Graham's *Something Intangible*. Terry has been nominated for 27 Barrymore Awards for his directing work at the Arden and received awards for *The Baker's Wife*; *Sweeney Todd*; *Opus*; *Winesburg, Ohio*; *Assassins*; *Something Intangible*; and *Fun Home*. He directed Michael Hollinger's *Opus* at Primary Stages in New York and was nominated for a Lucille Lortel Award for Outstanding Director. His short film *The Personal Touch* was nominated for an Emmy Award.

AMY L. MURPHY (Managing Director) A Philadelphia native, Amy co-founded the Arden in 1988 with Terrence J. Nolen and Aaron Posner. She is especially proud of the Arden Professional Apprenticeship program and its contribution to the Philadelphia cultural community. She completed the Executive Program for Nonprofit Leaders-Arts. Amy has served on the Board of the Cultural Alliance and Theatre Philadelphia. She has served on panels for the National Endowment for the Arts, the New Jersey State Arts Council, Theatre Communications Group and the Philadelphia Cultural Fund. Amy was named a Hepburn Fellow 2008-9 by the Katharine Houghton Hepburn Center at Bryn Mawr College.

ARDEN THEATRE COMPANY Founded in 1988, Arden Theatre Company is dedicated to bringing to life great stories by great storytellers—on the stage, in the classroom, and in the community. We create and produce new work through the Independence Foundation New Play Showcase. The Arden Professional Apprenticeship program trains future theatre leaders, and Arden Drama School classes teach children and teens about the craft of making plays. Our access program, Arden For All, makes our work available to the entire community through subsidized tickets and books for economically disadvantaged young people, and our Arden Arts Scholarship Fund provides scholarships for Arden Drama School classes and camps. The Arden has received twelve *Philadelphia Magazine* "Best of Philly" Awards, the Arts & Business Council's Arts Excellence Award, six *City Paper* "Reader's Choice" Awards, four *Philadelphia Inquirer* "Theatre Company of the Year" citations, 77 awards and 418 nominations from the Theatre Philadelphia's Barrymore Awards for Excellence in Theatre, and was named "Best Theatre Company" by *Philadelphia Weekly* in 2009. Arden Theatre Company, a professional, nonprofit 501(c)(3) theatre company, is a member of the Theatre Communications Group, the League of Resident Theatres, Greater Philadelphia Cultural Alliance, Philadelphia Convention and Visitors Bureau, and Old City Arts Association.

CRICKET'S RIDDLES

Cricket loves to challenge Pinocchio by speaking in riddles!
Listen throughout the play to see if you can find the answers!

What runs but
has no legs?

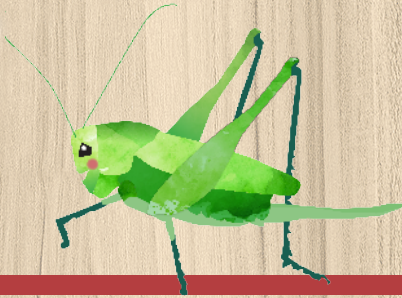
What's easy to get into
but hard to get out of?

What goes up and down
but never moves?

How many letter's
in the alphabet?

Why did the bumble bee
put honey under his pillow?

What has four eyes
but cannot see?



I SPY...

The set of this show has hidden surprises everywhere!
See how many of the objects you can find!

ladder

spray bottle

fan

saw horse

rolling stool

paint roller

red paint bucket

ARDEN CHILDREN'S THEATRE CELEBRATES...



25 years of
world-class theatre



Over 858,000 students
and families served



Inspiring the
next generation



Thanks for helping us bring
so many great stories to life!

Check out some of our favorite
Children's Theatre moments here:

<http://ardentheatre.org/support/childrens-theatre>



Join Us for the Final Show of
our 2023/24 Mainstage Season!

ONCE ON THIS ISLAND

Lyrics and Book by
Lynn Ahrens

Music by
Stephen Flaherty

Directed by
Amina Robinson



This Tony Award-winning, captivating musical
takes audiences on a journey to the Caribbean,
where love and folklore intertwine.

MAY 16 – JUNE 16

Recommended Age 12 and up

ARDEN

CHILDREN'S THEATRE

JOIN US FOR THE 2024/25 SEASON!

Buy both shows NOW without knowing the plays and receive these exclusive benefits:

LOWEST PRICES

Save up to 50% off regular ticket prices!

FLEXIBILITY

Make quick and easy exchanges!

BEST SEATS

Receive Priority Seating!

BUY BOTH NOW AND SAVE! • 215.922.1122 • ardentheatre.org



2023/24

DINING PARTNERS

Restaurants in Old City and surrounding neighborhoods are ready to welcome you!
We recommend these restaurants that support the Arden.

Amada

217-219 Chestnut Street
215.625.2450
amadarestaurant.com
@amadaphl

Café Tolia*

26 N. 3rd Street
267.687.2533
cafetolia.com
@cafetolia

Cuba Libre*

10 S. 2nd Street
215.627.0666
cubalibrerestaurant.com
@cubalibrephiladelphia

The Franklin Fountain*

116 Market Street
215.627.1899
franklinfountain.com
@franklinfountain

Fork

306 Market Street
215.625.9425
forkrestaurant.com
@forkrestaurant

Forsythia*

233 Chestnut St
215.701.4883
forsythiaphilly.com
@forsythia_philly

French Toast Bites*

Inside Cherry Street Pier
121 N. Columbus Blvd
lokalartisanfoods.com
@LokalArtisanFoods

Home Cuban Café*

17 N. 3rd Street
239.404.8038
homecubancafe.com
@home.cuban.cafe

High Street Philly

101 S 9th Street
215.625.0988
highstreetonmarket.com
@highstreethoagies

Khyber Pass Pub*

56 S. 2nd Street
215.238.5888
khyberpasspub.com
@khyberpasspub

Las Bugambilias*

15 S 3rd Street
267.239.5673
lasbugambiliasphilly.com
@lasbugambiliasphilly

The Olde Bar

125 Walnut Street
215.253.3777
theoldebar.com
@theoldebarphl

The Plough

and the Stars*

123 Chestnut Street
215.238.0499
ploughstars.com
@theploughphilly

Positano Coast

by Aldo Lamberti*

212 Walnut Street 2nd Floor
215.238.0499
positanocoast.net
@positanocoastphilly

Race Street Cafe*

208 Race Street
215.627.6181
racestreetcafe.net
@racestreetcafe

Royal Boucherie*

52 S 2nd Street
267.606.6313
royalboucherie.com
@royalboucherie



Restaurants with * offer a special promotion to Arden patrons. Please ask your server for details/scan the QR code for more details.

For complete restaurant descriptions visit: ardentheatre.org/dining

Dining Partners as of 2/9/24

Become a MONTHLY DONOR

to help sustain our daily work throughout the year!

This consistent support provides core financial stability to help keep the lights on, employ local theatre professionals, and reach even more students throughout the Greater Philadelphia area.

Becoming a monthly donor is the easiest way to increase your impact! Simply tell us how much you would like to donate monthly in the link below and we'll take care of the rest. A recurring donation of any amount helps:



**\$10
a month**

keeps the lights on during a full day of performances.

\$25

a month covers full tuition for 6 students to attend a Play in a Day session of Arden Drama School.

Join our
Sylvan Society!

\$100

a month gets you closer to our mission while deepening the role you play in making our work possible.



ardentheatre.org/donate

If you'd like to speak to a staff member about becoming a monthly donor, please call our Development Department at 215.922.8900 x146 or email devo@ardentheatre.org.

*Monthly gifts are charged automatically.

CAFÉ TOLIA

COFFEE & BAKERY



Where to find us:



☎ (267)-687-2533

📷 @cafetolia

📍 26 N 3rd St, Philadelphia, PA 19106



Pictured: Education intern Mars Berger assisting students and teachers during an Arden Drama School class.

Intern at the Arden

This spring, our Dr. Mindy Goldberg Rose intern has been Mars Berger, a filmmaker, director, and arts educator who recently graduated from the University of Pennsylvania. Mars is a Philly local who grew up coming to the Arden, and credits our company with sparking their love of theatre.

During their time here, they've built audience accessibility resources and taught students at Arden Drama School.

"The Arden is a company centered on a big-hearted community, which makes it a great workplace and an even better theatre! It's so refreshing to find an arts organization and educational space that believes creativity belongs to everyone." -- Mars Berger

The **Dr. Mindy Goldberg Rose Internship Fund** is made possible thanks to the generous leadership support of Charlie Rose, in honor of Dr. Mindy's commitment to education, the arts, and making lives better.

**Inspired by Mindy's commitment to the future of theatre?
Add your support by donating today:**



ardentheatre.org/drmindy

Corporate, Foundation & Government Support

\$100,000 & above

Hamilton Family Charitable Trust
Rosenthal Family Foundation
Shubert Foundation
William Penn Foundation
Wyncote Foundation

\$50,000 to \$99,999

Harmelin Media
Independence Foundation
PA Department of Community and Economic Development

\$25,000 to \$49,999

Anne M. and Philip H. Glatfelter III Family Foundation
Comcast Corporation
The Horace W. Goldsmith Foundation
PECO Energy

\$10,000 to \$24,999

Anton Charitable Trust,
In Memory of
Frederick W. Anton III
Arcadia Foundation
Fox Chase Bank Charitable Fund
Lincoln Financial Foundation
National Endowment for the Arts
Penguin Young Readers+
Philadelphia Cultural Fund
PNC Charitable Trust —
Robert H. Reakirt Foundation
TD Charitable Foundation
Truist
The Suzanne Roberts Cultural Development Fund
The Sylvia W. and
Randle M. Kauders Foundation
Univest Financial
Zeldin Family Foundation

\$5,000 to \$9,999

Civic Foundation
Ethel Sergeant Clark Smith Memorial Fund
The Haley Foundation
Janet Yaseen Foundation
Pennsylvania Council on the Arts

\$2,500 to \$4,999

Bendita Foundation
Charlotte Cushman Foundation
Christian R. and Mary F. Lindback Foundation
Cuba Libre+
Elliott-Lewis Corporation
Franklin Fountain+

Las Bugambilias+
The Lida Foundation
The Paul E. Kelly Foundation
Philadelphia Activities Fund
The Plough and the Stars+
Republic Bank
TCF- The Community's Foundation
Virginia Brown Martin Fund of the Philadelphia Foundation

\$1,000 to \$2,499

Alex J. Ettl Foundation
Barnes & Noble+
Birchtree Catering+
Cafe Tolia+
Dolfinger-McMahon Foundation
Franklyn Rodgers Family Fund of the Philadelphia Foundation
French Toast Bites+
Forsythia+
Fulton Bank
Global Atlantic Financial Group
Hamilton Family Foundation
Hassel Foundation
Home Cuban Cafe+
National Mechanics+
Rittenhouse Foundation
Sun East Foundation

Up to \$1,000

1812 Productions+
Actors' Equity Foundation
Art in the Age+
ASAP After School Activities Partnership
Chubb
City Fitness+
High Street Philadelphia+
Philadelphia Theatre Company+
The Mann Center for the Performing Arts+
Quaker Printing+
The R. Andrew Swinney Presidential Achievement Fund of the Philadelphia Foundation
The Wilma Theater+
Walnut Street Theatre+
Wide Eyed Studios+

Employee Giving, Matching Gift, Donor Advised Fund Partners

Amazon Smile
American Endowment Foundation
American Online Giving Foundation
Ameriprise Financial, Inc.
Bank of America

The Benevity Community Impact Fund
Bristol Myers Squibb
Cadence Design Systems, Inc.
Caterpillar Foundation
Charities Aid Foundation of America
The Chicago Community Foundation
Chubb
CIGNA Corporation
Community Foundation of New Jersey
Cristo Rey
Dun & Bradstreet
Equitable / AXA Foundation
Exelon Corporation
Fidelity Charitable
Give Lively Foundation
Global Atlantic Charitable Gift Fund
Goldman Sachs
Google
Impact Assets
Independence Foundation
Jewish Communal Fund
Johnson & Johnson
JP Morgan Chase & Company
Macy's/ Bloomingdale's
Morgan Stanley
Merck Foundation
National Philanthropic Trust Network for Good
PayPal Giving Fund
PECO
Penn's Way
The Philadelphia Foundation
Renaissance Charitable Foundation
Saint-Gobain Corporation Foundation
Sap America, Inc.
Schwab Charitable
Susquehanna International Group, LLP
T. Rowe Price
United Way
Vanguard Charitable
US Charitable Gift Fund
William Penn Foundation

+ Denotes a gift of goods or services
This list represents gifts made through March 25, 2024



The
Sylvan Society
Arden Theatre Company

Grounding the Present, Nurturing the Future

The Sylvan Society recognizes individuals who support the Arden's work by making annual gifts of \$1,000 or more.

The special generosity of our members enables the Arden to tell great stories by having the resources to achieve the highest level of artistic quality.

This list represents gifts made through March 25, 2024

Chestnut Grove
(\$25,000 and above)

Lois G. Brodsky
The CHG Charitable Trust
Nancy and Bob Elfant
Michael Grove
Alta and N. Peter Hamilton
Joanne and Jon Harmelin
Monica and Philip Rosenthal
Lee and Chris van de Velde
June and Steve Wolfson

Sassafras Grove
(\$10,000 - \$24,999)

John R. Alchin and Hal Marryatt
Christina and David Fryman[^]
Elizabeth Gemmill
Terry and Ann Marie Horner
Robert and Risa Lavizzo-Mourey[^]
Peggy Morgan and Patty Bowman
Charles Rose
Harvey B. Swedloff

Cherry Grove
(\$5,000 - \$9,999)

Anonymous
Richard and Kathleen Aregood
Rayenne Chen
Anne Cook and Russ Troyer
Ann E. Diebold
Deb Dorsey and Mike Green
Elisabeth Erlbaum
Stephen Falchek and John Offidani III
Richard Harris
Eileen Heisman and Marty Tuzman
Jim and Carolyn Hessinger
Robin and Saifuddin Mama
Alexis and Ed Pappas
Tom Petro and Kris Messner
Ceth and Sam Plum

Rosalyn K. Robinson and
Warren B. English
Bernard and Camille Rosenberg
Sid and Ruth Rosenblatt
Sharon and Irv Shapiro
Hether and Don Smith
Rosalyn and Stephen Weinstein
Nancy Brent Wingo

Filbert Grove
(\$2,500-\$4,999)

Brett and Nan Altman
Charles Arnao and Rosemary Watt[^]
Bethany Asplundh
John and Amy Bitman
Bob and Cheryl Carfagno
John and Fern Culhane
Joy De Jesús and James Reynolds
Michael A. and Edward C. Donato
Laura Drake
Shannon and Ted Farmer
Elizabeth Fernández-Viña~
Jill Fisch and John Gassenheimer
Linda and David Glickstein
Jen Harmelin
Edward Hillis
Peter* and Louise Kelly
Kenneth Klothen and
Eve Biskind Klothen
William A. Loeb
Janice Madden
Michael Mallee
Barb and Don Matheson
Amy Murphy and Terry Nolen
Dr. Joel and Mrs. Bobbie Porter
John and Claire Rodgers
Marilyn and Hank Royfe
Kathleen Sernak
Keith and Jim* Straw
Hope Yursa

Mulberry Grove
(\$1,000-\$2,499)

Anonymous (3)
Hank Adamczyk and Iris Melendez
Becky and John Adams
Diane Alessi
Stan and Lisa Altman
Patty and Joe Amato
Winifred Anderson and Eric Lien
Stephen S. Arms and Jennifer J. Arms
Jim and Janet Averill
Rhonda Ball
Sheryl and Allen Bar
Sheila Bell
Jay and Nancy Berkowitz
Linda and Mark Bernstein
Bill and Brenda Bertrand~
Sandy and David Beswick
Ian and Ryane Beutler
Dr. Regina Blaszczyk and Lee O'Neill
Louis Bluver
Viola W. Bostic
DeDe and Tony Brown
Ann and David Brownlee
Vicki and Russ Carlson
Karl Carter
Christopher and Jeffrey Carver
Cordelia Clement
Barbara Cobb
Marc and Margie Cohen
Kelly Colarelli[^]
The Susan Lavine
Coleman Charitable Fund
Gregory L. Coleman
Rebecca Davis and Mark Hoffman
Ellen Deacon~
Robert M. Dever
Tobey and Mark Dichter
Samuel Duplessis and
Daniel Krewson
Carol Eicher

Paul and Judy Farber
 Mr. and Mrs. Farenback-Brateman
 Donna and Norman Faye
 Jeanne B. Fisher and Robert F. Lang
 Carole M. Foley
 Dieter and Sara W. Forster
 Ellen and Tim Foster
 Sandi Foxx-Jones
 Lou and Rhoda Fryman
 Julie and Tom Gennaro
 Terry Graboyes
 Kate Groark-Shields
 The H and R Feinberg Family
 Foundation
 David C. and MaryJane Hackney
 Ann and Glenn Haig
 Anne Halkedis^
 Ellen and Steve Harris
 Hon. Lillian Harris Ransom
 Dr. Valerie Harrison
 Don and Lynn Haskin
 Janis Hawes and Patrick Cunningham
 Charles W. Head Jr. and
 John A. Faggotti
 Heidi Hertfelder^
 Steve* and Jane Heumann
 Karen and Mark Hite
 Deborah Hluchan
 Phyllis Hochberg and Stuartz Katz
 Diane Hofer
 Jill Hyman Kaplan and Elliot Kaplan
 Rachelle and Ron Kaiserman
 Margie and Scott Kasner
 Holly Kinser
 Carol Kelley
 Steven Klein
 Peter J. and Sandra Klugman
 Steven Knepper

B. Koller
 Valerie Koscelnik
 Marilyn and David Kraut, In Honor
 Of Amy Murphy and Terry Nolen
 Deborah R. Kravetz and Bill Robling
 Cyana La Divertida
 Mr. Robert Leventhal and
 Ms. Cheryl Getty
 Michael MacFarland
 Richard Maimon and Susan Segal
 Lee Marks and Lisl Zach
 Linda McAleer
 John and Amy McCawley^
 Kathy McMaster
 Peter and Laura McQuaid, In Honor
 of the amazing Arden Theatre Team
 A.C. Missias
 Chloe Mohr
 Leslie and Michael Molder
 Adam Mussell and Kate Whittington
 Marge Neff and Dan Winterstein
 Kathleen Nelson and John Kromer
 Arnold and Shelley New
 Mary Ivy and Roger Noone
 Michael Norris and Matt Varrato
 Susan Odyssey
 Barbara Oldenhoff
 Robert Overell and Lisa Glasser
 Don and Barbara Parman
 Ronald and Pam Pontano
 Maya Ponte and Benji Eichberg
 Laura and Douglas Pratt
 David Pressel and Jill Feldman
 Daniel Promislo
 Alan Reinach and Dana Perlman
 Alice Reyes
 Joy Rickabaugh
 E. Graham and Elizabeth Robb,

In Honor of Lee van de Velde
 Franklyn and Cintra Rodgers
 Jane A. Rose, CPA/PFS
 Mike Salmanson and Tobi Zemsky
 Gisèle Sambar Bathish
 Becky Sassi
 Geoff Schmidt and Marie Wong
 Kim and Ross Schmucki
 Ellen Schwartz and Jeremy Siegel
 Genvieve and Clete Shields~
 Roy and Lee Shubert
 Laura and Ron Siena
 Paulette Singleton
 Gayle and David Smith
 Kathy and Don Smith
 The Spector Charitable Trust
 Rudy Sprinkle and Andrea Barsevick
 Mike and Shannon Stellato~
 Kathleen A. Stephenson
 Robert and Sydney Stevens
 William K. Stewart, Sr. Foundation
 Stephen and Kathy Thompson
 April J. Tvarok, In Honor of Class 9
 Thomas and Dawn Weiss^
 Caitlin Wood and
 Martha Schoolman~
 Richard and Diane Woosnam
 Ellen Yin+
 Beth Zatuchni and Jerry Satlow~

* Denotes a deceased supporter
 + Denotes a gift of goods or services
 ^ Includes a matching gift
 ~ Includes a monthly gift
 This list represents gifts made through
 March 25, 2024

THE LEGACY SOCIETY

Arden Theatre Company would like to recognize the following supporters who have included the Arden in their wills or estate plans. Their planned gift provides support which will help sustain the Arden's work for decades to come.

Anonymous
 Ms. Peggy Anderson*
 Stanley Baurys*
 Ivy Bayard*
 Jane Berryman
 Louis Bluver
 Mary P. Burr
 Pearl M. Cappel*
 Larry S. Friedman* and
 Dean H. Rishel

Ellis Ginsberg*
 Peter Gistelinc and Kim Bloom
 Grace Goglewski and
 Eric Schoefer
 Gary R. Grob*
 David C. and Mary Jane Hackney
 Jim and Carolyn Hessinger
 Suzanne and James Hill
 Alan and Nancy Hirsig*
 Mary Ellen Krober

William Loeb
 Donald Martin and Richard Repetto*
 Peggy Morgan
 Tom Petro and Kris Messner
 Kristen Phillips and Matt Schreck
 Renee E. Polsky*
 Madeline Portnoy
 Irene M. Reiter*
 Dr. Harry Rosenthal
 Marilyn and Dean Staats

We hope you will consider including the Arden in your will or estate plans. To be recognized as a member of the Legacy Society or with questions regarding planned giving, please contact Jessica Abel, Director of Development, at 215.922.8900 x149.

Thank You to Our Supporters

\$500-\$999

Anonymous
Jerry Abelson and June Idzal
Sally and Michael Bailin
Eddie and Myra Bell
Carol and Allen Bonner
Beth Burrell and David Sorensen
Karen Cheney
Carol Cook
John Crawford and David Penyak
Warren D. and Kaye L. Crown
Catharine Dolan and
Richard Bierregaard
Jonathan V. Edmondson[^]
Epstein Family Charitable Trust
John Erickson and Harry Zaleznik
Lisa Fair
Katherine Fandetti
Paula Fuchsberg
Janet-Lynn Garrabrant
Joseph and Jane Goldblum
Tanya Gordon
Ben and Jody Graff
Marjorie Grebow
Paul D. Green
Rhoda Harrison
James Hinrichs
Diane Hlywiak, Esquire
Glenn Holsten
Jane Kamp and Thomas Lloyd
Barbara and Jerry Kaplan
Janice King
John and Holly Kleimo
Catherine Klinger Klutcher
Sarah Kloss
Jane S. Kramer
Mary Ellen Krober
Ruth and Peter Laibson
David Lerman and
Shelley Wallock
John and Melissa Lore
John and Martha Lubell
Mary Ellen Marzullo
Brendan May and
Mary Kate McGrath-May
Michael McArdle
Barbara McCleary
Julie Meighan+
Susan and Alan Miller
Joann Mitchell
Sandra S. Mock
Jackie Morrill and Mike Donahue
Shannon Mullican and
Kurt Schillinger
Mr. Joe Norton
Shellie Peters
Jessica Phelan
Claire and Lud Pisapia
Janet and John Poth
Paul Rabe and Cheryl Gunter
Susan and Steve Reisbord
Kurt and Mary-Ann Reiss
Rachel R. Reynolds
Timothy Riddle
Robin Rifkin and
Michael Silverman

Daniel and Faye Ross,
The Ross Family Foundation
Dan Roethermel and
Michael Hairston
Mauricio Saavedra and
Joanna Sykes-Saavedra
Terri Schwomeyer
Joseph Shaffer[^]
Valerie Smith
Stanton and SaraKay Smullens
Barbara and Robert Stewart
Susan and Jim Strohmman
Mary Thomas
Lewis and Hella Volgenau
Donna and Andrew Wechsler
Debra Whitby Norman

\$250-\$499

Anonymous
Carol and Bennett Aaron
Kim and David Adler
Anthony Agati
John Allerhilgen
Zachary Altman
Janet Alwang
Marilyn and John Anthony
Bree Archambault
Sandra Axelrod
Sylva Baker
Cynthia and Geroge Barth
Wilma Bass
Ellen Baxter and Robert Kavash
Richard and Eileen Bazelon
Carol Beam
Patricia G. Beck
Joan and Richard Behr
Pat and Tom Bender
Gretchen Bender
Sara and Bruce Berger
Timothy Berger and
Sarah Mooers
Ruth Berman
Charlotte H. Biddle
Fern and Bob Billet
Barbara Bisgaier
Linda and Alden Blyth
Janice Bogen
Miriam Bowerman
Ed Boyd and Ken Tasker
Dr. Stephen Bulova and
Eleanor W. Bulova
Sabra Cameron
Chip Capelli,
In Honor of Amy Murphy
Margaret Cavanaugh
Elizabeth Cerkez and
Alec Schoenfeld
Arlene Cessna
George and Barbara Chalmers
Leah Chaplin and Eileen Gildea
Edward Chiginsky
Diane and Patrick Close
Deborah Co
Mark Cohen and Marty Johnson
John Coleman
Mary Coleman

Lynn Collins
Janet and Richard Conn
Susan Cook and Jeff Staikoff
Mary Jo Courcy
Jill, Hank and Katie Croft
Paul Danifo
Robert and Bonnie DeAngelo
Nancy DeLucia
Marla and Andrew Diamond
William Diebold and
Deborah Freedberg
Robert Dinardo
Angela D'Orsi and Dean Beer
Barrie duBois
Donald and Geraldine Duclow
Robert Earle[^]
Jeff and Michelle Eichen
Sally and Stewart Eisenberg
Anne Ewers
William and Anne Ewing*
Norma A. Fabian
Antoniette Farrar Seymour
Cheryl and Steven Feil
Mark and Rene Feitelson
Victoria Ferguson
Jay Finestone and
Randy Jill Schwartz
John and Nancy Fischer
Jacqueline Foldesy
Kimberly Foster[^]
Allan P. Freedman and
Amy Rappaport
Paul Friedman
Brenda Furtak
Bernadette Gallagher
Dan Gannon
JJ Garcia and Charlie Dreisbach[^]
Jesus Garcia
Joel R. Gardner and
Holly A. Phelps
George and Dona Garrettson
Janet Ginzberg and John Caskey
Rena and Henry Goehl
William and Ilse Goldfarb
Jay Goldstein
Joyce Goodman
Eileen and Normal Gray
Rita Greenfield
Trudy and Paull Gutterman
Marlane and Harvey Guttmann
Larry Haefner
Henry and Joyce Halpern
Dr.* and Mrs. James Haney
Caroline Harries
Carol Hauptfuhrer
Susan Havens-Lang
Nancy Haverstock
Chris and Karen Hennes
Dan and Monica Hilferty
Terry Hirshorn
Leonard and Audrey Hoffman
Mary and Howard Hurtig
Michael J. Hozik
and Margaret L. Rea
Jim Hutchison
Dave F. Huting

Thank You to Our Supporters

Jennifer Jenkins
DL Kacer
Philip* and Marge Kalodner
Phyllis Kauffman
Douglas and Ruth Keating
Susan Kellogg and Dick Hoffman
Michael and Marie Kenis
Kate Kidder
Stephen Kieran
Megan Kiesel
Paul R. Kleschick III
David Knowlton and
Diane Zompa
Eden Kratchman,
In Honor of Richard Maimon
Ellen Kurtz
Joyce Laskin
Andrew and Lynn Lees
Drs. Bob and Joyce Leonetti
Anna Levinger and
Bree Lowdermilk
Natalie Levkovich
Edward Lundy and Debra Reiff
Cirel and Howard Magen
Kathleen Mahan
Ruth Mandelbaum
Murray Margolit
Kevin and Megan Maynard
Vicki Meitus

Eric Moss
Kate Nelson+
Joanna Nunan
Paul Nutaitis and Robert Clark
Deb Olley and Brian T. Murphy,
In Honor of Deb Dorsey
and Mike Green
Tim O'Malley
Linda Osler
Fred Ott
Robert Ourach
Kimberly C. Oxholm and
Carl Oxholm III
Mr. Larry Pace
Michael and Judy Paul
David and Amy Pollack
Sandy Portnoy
Ilene and Coleman Poses
Nick and Peg Potalivo
Eleanor and Joseph Reinhardt
Mr. and Mrs. William H. Rivers, Jr.
Claire Rocco
Robert L. Roessler
Maxine Romano
Shelley Rosenberg
Anthony Rostain
Adelle Rubin
Suzanne and Kip Salus
Marilyn Sanborne and

Richard J. Labowskie
Rita Schaer
Perlita and Frank Schorfheide
Bonnie Schorske
Jackie Schroder
Lauren and Daniel Schwartz
Lawrence and Carol Segal,
In Honor of Richard
Polly Shaffer
Dan and Hanna Shapira
Karen and Robert Sharrar
Elaine Sherman
Thomas Sherman and
Nancy Middlebrook
Jim and Cathy Shippen
Diane Silverhardt
Robert Snyder
Amanda Spann^
Dr. Christina Stasiuk^
Emily Steiner
Elsie Stern and Steve Cohen
Edward and MaryAnn Tierney
Matthew Tom
Adrienne Topic
Margaret Evans Tuten
Bryan Ulishney^
Bruce and Nancy Urbschat~
Carol and Paul Vahlstrom
Judith Voet



 123 Chestnut Street
Entrance on 2nd
Philadelphia
WWW.PLOUGHSTARS.COM

The Plough & The Stars
Before or After the Show
Arden guests receive
10% off their meal!

Thank You to Our Supporters

Mark Wade
Marlene Weinberg
Vivian Weinblatt
Abigail Wolf and Jonathan Weiss
Judith L. Wellington
Caroline West
Doris A. Williams
Susan Williams
Mark Williams
Richard Willis and Linda Hartnett
Jim and Jean Wilson
Linda Wood
Sue and Eric Woolf
Josh Young
Heidi and Mark Zod, and Family

\$125-\$249

Anonymous (8)
Judy Aaron
Rhoda Abrams
Thomas Achenback
Eleanor Adam
William and Patricia Alber
Virginia Alpaugh~
Estelle Alexander
Michael Allen
Helene Amster
Melba Axelrod
Camille Bacon-Smith
Esther Balkin
Theresa Bambino
Charlene and Keith Bance
Cecily Banks
Theresa Baraldi
Judy Barbush
John Barr and Jennie Shefler
Sally and Morris Barron
Ronald Barras
Robert and Sandy Clay Bauer
Susan Becker and Aaron Rubin
Mr. David Berch
Marcie and Robert Berke
Amy Brantz and Edward Bedrick
Sue Bentson
Claire and Joseph Berger
Donald and Sheryl Berger
Frank Bernard
Sandy Betner
Barry and Marilyn Bevacqua
William Bissell
Barbara Black
Nathan Blum and Barbara Rolnick
F. William Bogle
Ernest Bollin
Gwen Borowsky
Nicholas Bosshardt
Michael P. Boyle
Pam and Steve Briggs
Lorena Broesamle
Barbara Bromfield
Eadie and Allan Brooks
Kathleen Brooks
Katherine Brown
Elise Bruhl
Joanne Burak
Ms. Monika Burke

We are proud to support

Arden Theatre Company

HARMELIN MEDIA

More than forty years of
transforming advertising.

More than forty years of
supporting the arts.

harmelin.com

Tracy Callahan and Joe D'Agistino
Sarah Campbell
Michael Campo+
Chester Allen Carson
Vincent Cancro
and Donna Davenport
Debbie and Allen Casnoff
Avigail Caspi Lebovic
Lillian and William Cassel
Caroline M. Castagno
Margaret and Phillip Cavanaugh
Anne Chain
Kamesh Challuri
Maureen Charnitski
Mr. Joseph Chaya
Richard Cieslak
Barbara Citerone
Tawny Clark
Mary Cochetti
Gert Cohen
Howard Cohen
Lauren Coleman
Everod Coleman
Michael Coleman
Rick and Carol Collier

Kristina Collins
Rosina Coltellaro
Janet Cook
Carol Copland
Donna Cordner and Brent Groce
Gladys Corrodi
Barbara Cortese
Joan Countryman
George Craig
Michael and Nancy Crawford
Alexander Curtin
Joseph and Helen D'Angelo
Todd and Christine Darr
Anne Davenport
Bill Davis and Lisa Handler
Emily L. Davis
Kelly and Steve DeAngelis
Francis de Regnacourt
Emilia Demarco
Teri Dicesare
*George F. Koch, Jr. and
Santo A. DiDonato
Susan Dinan
Jeanne Doherty
John Doherty

Thank You to Our Supporters

Joseph and Virginia Dominic
Joanne Donahue
Stuart and Diana Donaldson
Colleen and John Donofrio
Judith Drasin
Shane Dreher+
George Dvorak
Faith Edelman
Anne Egan
Linda Ellsworth
Carole Epstein
Ted and JoAnn Erfer
Adelaide Ferguson
and Ron Cohen
George Feuer
Gene Fiducia
Judy Flander
Judy and Hal Fliegelman
Donald Foote
Kenneth Foster and Mary Jenkins
Nikki Fox
Mimi and Nick Fox
Allyson J. Frank
Elyce Freedman
Rebecca Freedman
Brenda Freitag and Chet Tuthill
Douglas Frenkel and
Marlene Weinstein
Tong-Ming Fu
Lynne Fuller
Carol Fuoco
Suzanne Gallgher

Miriam Galster
Susan Gasteyer
Greg Gephart
Scott and Lynda Glading
Joan D. Gmitter
Dick Goldberg
Diane and Frederic Graboyes
Marianne and Donald Green
Rick Greenstein
and Claudia Tesoro
Celeste Griffith
Joanne Guarnieri
David and Myra Gutin
David and Janice Haman
June Hament
Elizabeth Harman
Tahirah Harrigan
Russell Harris
Beverly Hayden
Virginia Hayes
Elizabeth Heller-Mesznik
Susan Herron
Wendy and Steve Hess
John and Marcia Hiehle
Thelma Hilibrand
Margaret Hill
Richard and Barbara Hirsh
Maryl and William Hitchings
Johnnie Hobbs
Alexa Hogarty
Robert Holland
Edward Hoy

Caren and Stuart Hosansky
Geraldyn Humphrey
Jill Huntley Taylor
Thomas Hurster and
Jacqueline Salmon
Meghan Ignatosky^
Dave Ingram
Timothy M. and Carol M. Johnson
Peter and Nora Hunt-Johnson
Maurice Johnson
Jeanette Johnson
Bruce Joss
Glenn Kalina
Karen Kaplan^
Anne Kasprinski
Louis Karuse
Steven Kavanaugh
Rosamond Kay
Sean Keegan-Landis
Colleen Keith
Brian Kennedy
Cindy Kesselman
Rachel Kipnes
Cheryl and John Kirby
Laura Kirby
Brian and Caren Kirschner
Charles Klaniecki
David Klein
Ken, Eva, and Aaron Klein
Susan Kleinman
Lora Kline
Michele and John Koskinen



*Visit us at 110 Market St. Old City Philadelphia
or Order online ShaneCandies.com*

Thank You to Our Supporters

Gregory Koutnik
Vicki and Don Kramer
Richard G. Krassen
Maureen Krueger
Denise A. Kuhn
Barry and Janet Kushner
Roman and Melaku Lakew
Medita Laville
Martin and Hannah Laufe
William Lederer
Susan Lee
GeorgeAnn T Lenard
Alan and Susan Levin
Ely and Sarah Beth Levine
Rafael Levites
Arlene Liebman
Norman and Sylvia Lieberman
Mary Lee and Bill Lieser
Lisa Linder
and Richard Grossman
Laurel and Robert Lipshutz
Brian Litt
Audrey Litto
Kathryn Loitz
Jacqueline Loli
Greg Lord
Diane and Michael Love
Howard R. and Jennifer Lurie
Susan and James Lytle
Whit MacLaughlin and
Catharine Slusar
Richard and Scotia MacRae
Theresa Mader and David Suter
Dan Maier
Miriam Mandell
Joseph M. Manko
Theodore Mann
Deb Martin
Suzanne Matlock
Ken and Margery Maurer
George and Judy McCarthy
William McCauley
Particia McCole
Alice McCreary and David Epler
Gavin McCullion
Michelle McFarlane
Dagmar McGill
Kathleen McGrann
Virginia McIntosh
Louise McLeod
Becky McMahan
Lorraine and Bruce McMahon
Arthur and Sallie Melvin
Adrienne Mendell
Allyson Mercer
Mary and Robert Metrione
Cheryl and Gerald Meyer
Barbara Miller
Frances Miller
Sandra and Martin Miller
Michael Milone
Dale Mitchell
Mary Fran Moeller

Jen Molod
Florence Momplaisir
Valerie Mond and Ed Nowak
Gina Moore
Calibous Moskowitz
David N. and Laurel S. Mosteller
Mary Mullarkey
Theodore and Theresa Munz
Sandra Murray
Ken and Sue Myers
Stephanie Naidoff
Ann Marie Nasuti
Marissa Neale
Heather Neff
Helen Newbold
Claiborne Newlin
Etta and Chuck Nissman
Maryanne Noel and
Philip Friedman
Frances Novack
William Norton
Judith O'Dell
Grace O'Dowd
Nora O'Dowd
Patricia Ogiony
Margaret Olson
Mr. Gerald Orr
Jim Ortega
Abbey Owens
James Pabarue
Alan and Bryna Paston
Alisa Peet
Teresa Peterson
Kristen Phillips and Matt Schreck
Benjamin Pierce
Deborah Pines and
Carl Perchonock
Michael and Lyndsay Pio
Martha Platt and Marlis Kraft
Lois and Paul Plotnick
Alma Plummer Marshall
Jeffrey and Elizabeth Podraza
Victoria Pratt
Antoinette Pressman
Ruth Prushan
Aneira Puttaswamy
Mark and Karen Reber
Stanley and Rita Reichlin
Mary Jo Reilly
Judith Richt
Barbara Rice
Gary and Robin Rislser
Marjorie Risman
Jerry and Nancy Roberts
Cathy Robinson
Mrs. Deborah Robinson
Renee Rollin
Lou and Laura Romano
Tracy Romans
Carey and Robert Roseman~
Richard and Anne Rosenberg
Hal and Sue Rosenthal
Edwin and Sally Rosenthal

Richard Ross
Diane Rosshiem
James Rush
William Russell
Suzanne Ryan
Joan Ryder and Robert Ludwig
E. Ruth Sachs
Joan and William Sidel
Sandra Sborofsky
Barbara Schaffer
Karen Schermerhorn and
Evan Seymour
Lucille Schlack Drake
Les Schlessinger
Marvel Shmiefsky
Mary Ellen Schneider and
Carl W. Schneider
Jill and Kerry Schuman
Mark and Nancy Schure
Evelyn and Harold Schwartz
Elena Selina
Hermene Shapiro
Irving Shapiro
Stacie Shepard
Iris Shifftan
William Shoff
Mel and Susanne Shuster
Paul Siegel
Robert and Harriet Singer
Rebecca Sinkler
Helen Smeltzer
Harriet Smith
George R. Smith
Walter Sobon
Jeffrey Sorkin~
Patrick Sorrells
Rudy Spraycar
Marilyn and Dean Staats
Joanna Stamper
Megan Staples,
In Honor of Amy Murphy
Konnie Stark
Michael Stelle
Margaret Stein
Julie Stern
Steven Stern
Sarah Stitzer
Gaynor Strickler,
In Honor of Anne Cook
Elan Strominger
Daniel Szlyd and Kathleen Ross
Dr. Dolores Szymanski
Linda R. Tabas
Sylvia and Frank Tarzanin
Maxwell Thoeni
William Thomas
Thomas Thompson
William Thompson
Gina Tomkowich
Elizabeth Townsend
Marian Tracey
Linda Traver
Jane Trentacoste

Thank You to Our Supporters

Richard Urbani
John Urofsky
Darrell Velegol
Tom and Patricia Vernon
Alec Vidal
Lorine Vogt
Deborah Volkmer
Sandra Vondeling
Ian Wachstein
and Michele Zeldner
Ann Walker
Bo Wang
Tom and Beth Warms
Donna and Jay Warshaw
Barbara Wasserman
Ellen Wasserson
Melinda Watts
Linda Waxler
Shelly and Fred Weiner
Renee Weisband
Rashida Wellbeck
Suzanne L. Weston
David Wierz
Bob and Ellen Willoughby
Anne Wittkamp
Leon and Phyllis Wolf
Hon Wong
Robert Woodcock
and Sally Leiderman
Jodie Yanno
Barbara Yorke
Dina Zimbardi
Pamela Zitta

\$75-\$124

Anonymous (5)
Lawrence Abel
Eileen Abel
Carole Abercaugh
Stuart M. Adair,
In Honor of Amy and Terry
George Ahern
Diane Ajl
Hilary Alger
Peter Allen
Barbara Amstutz
K. Anderson
M. Faith Angell
Jay Anstee
Patricia A. Armitage
Nancy Atchison
Rosalie August
Dr. Rita Axelrod
The Babilonia Prunés Family
Nelson Bagby
Cecil Baker
Dr. Donald Bakove and
Margaret G. McLaughlin
Pam and Earl Ball
John Baltrush and Pam Allen
M and M Baltrush
Rebecca Baranowski
William Barcklow
Marlene Bareiss
Joseph Bartman
Carolyn and George Bassett

Wallace and Denise Bateman
Fred Baurer
Oksana Baydina
Frances and Michael Baylson
Flora Becker
Jim Becker
Megan Bellwoar and
Michael Hollinger
Michele Bennett
Livia Berardi
Irene Berkowitz
Connie and Dick Berman
Estelle Blaustein
Amy Bleakley
Jocelyn Block
Joshua Bloom
Mr. and Mrs. Larry
and Joyce Bloom
Thomas Boghosian
Linda and Andy Borson
Iris Boshes
Marcia Bower
Amy Bowers
Hazel Bowers
Erin Boyle
Brian Boyle
Virginia Brabender
Stanton and Jill Braid
Karen Bramblett
Joseph and
Mary Lou Breidenstine
Terrence Brennan
Jennette Brian
Ted and Susan Broom
Robert Brophy
Doris Broudy
Patricia C. Brown
Elijah Brown
Joshua Browns
Ethelyn Brownstein
Cathy and John Bryck
Elizabeth Buckley
Michael P. Buckley and
Mason Barnett
Nora Burridge
Peter and Miriam Burwasser
Dorothy E. Byrne
Nancy Calabretta
Francis and Mary Calter
Virginia* and Samuel Cameron
Anthony and Jaque Camp
Andrea Caniglia
Carolyn Cannuscio and
Daniel Rader
Stephen Capadona
Lise and Dick Carr
Kim Carson
Joseph Casey^A
Sharon Ceravolo
Stuart Charme
Kathy Chase
Janet Cherry
Susan Chisholm
Emily Cieri
Ivor Clark
Karen Clark

Tom Clark
Kathy and Bob Cochrane
Helene Cohen
Judy Cohen
Beth Cohen
Jazquelyn Cohen
John Collett
Barbara Collier
Jane Combrinck-Graham
Janet Connor Love
Peggy Conver
*Gerard and Cheryll Conway
Betty Cooper
Jeff Cooper
Sarah Cooper Searight
Elizabeth Cornman
Paula Cortes
Glenn Coughenour
B. Karen Coyne
Heather Crane
Sarah Crawford
Anna Coxe Toogood
Marie Cruz
Veronica Cuccinotta
John Dale
Barbara and David Curtin
Ms. Dorothy Dalton
Cynthia D'Ambrosio
Barbara A. Daneluzzi
Cheryl Dannenbrint
Benjamin D'Annibal
Gilbert Davis
Nancy and Ken Davis
Susan Davis
Thomas and Eileen Davis
Ms. Elizabeth Deegan
Paul Deigendesch
Catherine Del Duca
Cordelia and Don Delson
Michelle Denburg
Nancy and Nishan Dersimonian,
In Honor of Clayton Tejada and
Arden Front of House Team
Kathleen Detreux
Rhoda Dickey
Ray Didinger
Judy Dinn
Gina DiPonziano
Catherine Dolan
David Donaldson
Bill Dooley
Rosanna Dorazio
Sidney and Sam Dranoff
Daniel Drexler
Robert and Renee Dubin
Carol Dudnick
John Dulik and Sandra Folzer
Marian Duncombe
Lois S. Durso
Natalie and James Dyen
Joyce Dzekorius
Richard Egan
Larry Eichel
Susan Ellenberg
Selma Ellis
Jason and Jennifer

Thank You to Our Supporters

Ellsworth-Aults^
Dr. Beverly Emanuel
Linda Emerick
Jack Ende
Wendy Epstein
Edmund and Judy Erde
Karen Ernst
Alan Ettenson
Dorothy Evensen
Sonja and Thomas Eveslage
Mike Falcone
Daniel Farah
Anne and Steven Fassler
Lona Farr and David Voellinger
Nancy Featherstone
Cari Feiler Bender and
Rodd Bender
Winifred Fessenbecker
Jill Fink
Leila Finkelstein
Joan and Aron Fisher
Pamela Fisk
C.J. Fitts
Mr. Raymond Ford
Tamara Forstater
Kathleen A. Foster
Abbe Fox
John and Elaine Frank
Alexandra Frank
Judy Frank
Diane Frankel
Susan and Paul Frederic
Alan Freed
Barbara Freed and
Alan Mittelman
Fran Freedman and Job Blum
Paulette Freeman
Martha Friedman
Marie Fritzinger
Abraham Gafni
Malika Gandhi
Ofelia Garcia
The Gifford Family
Lisa Gates
Iris Gaughan
Jenna Gavaletz
Charles Gear and
Anna Lee Morgan
Coeli Genter
Eric Gerstel
Gwen and Alvin Gilens
Marylouise Gladish
Philip and Karen Glick
Ms. Etta Glickman
Marion Goldberg and Paul Keller
Brian Goldsmith
Heather Golin
Jacqueline Gonatas
Bob and Jan Goren
Marylyn Goutmann
Rick and Sharon Graham
Phillip Graneto
Joshua Grant
Donna Grasson
Ellen Greco
Cheryl Green

Mark Greenberg
Alan and Sara-Ellen Greenberg
Joan Greenfield
Sheila L. Greer
Kaitlin Gregory
Adam Gress
Stephen Griffey and
Melinda McGough
Frances Grubb
Dan Gutierrez
Mr. Mark Haas
Marcia Halbert
Emma Halpert
Teresa Hanssens
Jessica Harms
Shelley Harris
Barbara Harris
Carol Harrison
Palmer and Judith Hartl
Libby Harwitz and
Burton Blender
Gail Hauptfuhrer
Jenn Hayden
Kenneth Heings
Patrice Heller
Irene Hempstead
Stuart Henderson
Angela and Michael Hennessey
Don Henry
Abe Henry
Trudi and Irv Herman
William Herring
Les and Mary Heselton
Leigh Ann Hewston
Kirsten Hickerson
Barbara Hilgen
Mershon Hinkel
Toby Hogan
Mrs. Elizabeth Hollinger
Hollie and James Holt
Dr. David O. and Patricia Holtz
Marie Horchler
Esther and Robert Hornik
Dr. Mindy and Jay Horrow
Chris Hoyler and Bob Jackson
Lynda Hubbell
Michelle Hudson
Kevin Hunt
Ellen Huyett
Greg Jaffe
Dr. and Mrs. William Jantsch
Rebecca Jarosh
Stacey Jarrell
Rosemary and Ejner Jensen
Leah Johnson and Damien
Suqarrell
Daniel Johnson
Phyllis Jones
Warren Joseph
Mike and Kate Judge
Edward Kahn
Lisa Kahn
James Kaib
Barbara and Leslie Kaplan
Ellen Kaplan
Patricia Kapur

Dr. Rhonda Karp
Judy Kastenber
Mimsye Katz
Melody Katz
Lucy Kaufman and
Matt Lockwood
Jennifer Kay
Joyce Kay
Kara Keenan Sweeney
Chris and Bridget Kelleher^
Frances and Paul Kende
Megan Kennard
Barbara Kessler
Toni and Herbert Kestenbaum
Robert and Susan Kettell
Julia Kharlip and Oleg Teytelboym,
In Honor of Every Brilliant
Thing Production
Christina Kind
Charles King
Jay and Bebe Kivitz
Marlena Kleit
Rita Klinger
Veronica and Gary Klocek
Barbara Klock
Lorraine Kobeski
Jerry and Deena Koffler
Theodore and Amy Kokas
Ellen Kopeland
Joe and Doreen Kordorsky
Richard Kordorsky
Judith Kornfeld
Christine Kozsuch
Nassya Kravevska-Owens
Shira Kramer
Dr. Hillary Kruger
Will Kumpas
Christopher Kurtz
David LaFontaine
Daniel Lai
Debby Lamanna
Lois Landis
John Landreau and
Sherry Grasmuck
Joan Lapayowker
Melanie LaPenta
Sigrid Larson
Gretchen Lea
Alexandria Leitao
Maria Lerman
Howard and Susan Levinson
Cara Levinson
Michael L. Levitan
Bella Lewensohn Schafer
Joanne Lewis
Mr. Darryl L'Heureux
Patricia Lima
Barbara Lincow
Daniel and Kathleen Lipinski
Linda Litwin
Nadine Lomakin and
Michael McPhilly
Nancy Ludgus
Melissa Lukach
Nancy and Jerry Lutin
Robert and Patricia Lynam

Thank You to Our Supporters

Denise Mahoney
Colleen W. Marano
Bob and Sue Ann* Marburg
Terry Ann Marek
Mary and Jack Markov
Randi Marrazzo
Barbara Marshall,
In Honor of Barbara Marshall
Jane Martin
Linda Martin
Nancy Martin
Terry and Lyle Martin-Murley
Anna Lee and Andy McAleese
Ned and Joan McCarthy^
Robert McCarthy
Chris McDowell
Judith McDowell
Vicki McGarvey
Chris McGinniss
Margaret E. McGovern
Brian McGraw
Kim McKnew
Molly McLaughlin
John McMillian
Donette McPoyle
Andrea D. Meals
Meryle Melnicoff
Mark Mendenhall
Fran Metzman
F. Michel
Faith and John Midwood
Emily Mikesell
Kerry Milch
Linda Mill
Megan Millenky
Joyce and Mark Miller
Danny Miller
Marianne T. Miller
Lina Minicucci
Paula and Lawrence Ninerell
Ann Mintz and
Clifford Wagner
Laurent Moe
Melinda Montanaro
Brad Moss and Laurie Gottlieb,
In Honor of Harvey Swedloff
Judith Nagle
Linda Naskret
Mara Natkins
Pamela Nelson
Marta Nolan-Alley
Pat Nolan
Daniel and Jeannette Norris
Gregory and Linda Nosal
Janet and Dennis Novack
Alan Oberman
Jenna Olszak
Jeanne Omans
Mr. and Mrs. Gerald O'Neill
Hugh O'Neill
Nicole and James Onesti
Shawn Orr
Julie and Eric Orts
Stanton S. Oswald and
Phyllis Weber
Douglas L. Overtoom

Sharon Pacek
Michael Palazzo
Blair Pallas
Brian Parker
Emelie Passow
Anne and Ted Patterson
Sherry Peck
Ms. Doris Peltzman
Jane G. Pepper
Kristen Perlman
Marthenia Perrin
Belinda Peterson
Anna Phillips
Jerrold Pierce and Linda Fletcher
Karen Piercy
Lucille Pilling
Jaye Pinch
Ronnie Pleet
John and Victoria Podolski
Regina Poletti
Amy Polis
Steven Portman
Dr. Tom and Candace Pratt
Kate Ransom
Timothy and Joyce Ratner
Paul and Ellen Rawicz
Kathleen Regan
Krista Reichard
Ms. Mary Reinhart
Michael Riccardi
John and Virginia Rice
Kenneth Richman
Dana Ridley
Jacqueline Riedel
Ann Riggan
Elisa Riesenbach
Fran Rissmiller
Marjorie Robbins
Eve and Charles Robbins
Robert Robinson
Barbara and Anthony Rooklin
Beverly Rosen
Maxine Rosen
Martin and Carol Rosenblum
Dean Rosencranz
Alexis Rosenfeld
Ellyn Rosenfeld
Libby Rosof and
Murray Dubin
Nina Rossi
Linda Rouse
Edward and
Elizabeth Rubenstone
Renee Rubin
Kathryn Ruch and Alan Folsom
Bernard and Barbara Ruekgauer
Stephen and Linda Russell
Desiree Salera
Robin Sampson
Katherine Sanderson
Alan Sandman
Vicki Sarnoff
Vicki Satinsky
Matteo Scammell
Carole Schaefer and
Richard Charney

Karyn L. Scher
Jordan Schilling
Ken Schmitt and
John McCormick
Linda Schneider
Patty Schoelkopf
Ms. Suzanne Schwager
Jennifer Schwartz^
Robert Schwartz
Gail Scott and
Thomas D. Quinlan
Patricia Scott Hobbs
Hideko Secrest
Henry Seigel
Annilee Seitchick
Deniz Selman
Kathleen Senkow
Karen and Bob Serenbetz
Barbara Shapiro
Gioia Sharp
David W. Sharp
Wendy and Matthew Shilling
Laura Shook
Carol and Allen Short
Hedvah Shuchman
Marilyn Sifford and
Robert Butera
Donald and Marilyn Silberberg
Eunice Silver
Caroline Simon
Ms. Karen Singer
Judith Skillings
Carleene and David Slowik
Dennis Raymond Smeal
Ariana Smith
Bruce and Penny Smith
Colleen Smith
Joseph Smith
Kathleen Smith
Georgia A. Smyth
Wayne Snover and Janet Tebbel
The Snyder Family
Emily Soloby
Vicki and Evan Solut
David and Liza Spaventa
Heather Speirs
Margaret R. Spencer
Pamela Spiller
Margaret Spolter
Gary E. Stahl and
Deborah S. Stahl
Dionne Stanfield
Ms. Naomi Starobin
Paul Steinberg
Rabbi George and
Deborah Stern
Steve and Judy Stern
Joel and Barbara Stewart
Catherine Stock
Louise and David Strawbridge
Fred Stuart
Kathleen Sullivan
Elizabeth Svenson
Gary and Betty Szatkowski
Cheryl Taddei
John Tarves

Thank You to Our Supporters

Elizabeth Taylor
Sandra Telep
Letty Thall
Hannah Thomas
Cinnamon Tinsley
The Tobias Family
Charles Todd
Elizabeth Torres
Richard Trama
Paul Traviline
William Travis
Joan and Tom Tropp
Janize Ulzheimer
Carol Usonis
Heather Van Horn
Valeria Vasilevski
Cynthia L. Vena
Larry Viezel
Frank and Carol Vita
Jonathan Waller
Tom Wand
Elizabeth Warner
Jacqueline Weber
Harri Weinberg
Taube and Sam Weinberg
Shelly and Fred Weiner
Margo Weishar
Carol Weisl
Kate Weiss
Lenore Weissberg
Sharon Wellons
Liz Welsh
Shannon Welsh
Gary Whitley

Robert C. Wickline
Howard Wiener
Kendal Williams
Carol Williams
Dora and Oscar Wilsker
Laura Windham
Linda Wingate
David Winikur
Angela and Michael Winterrowd~
Marcia Witlin-Basickes
Franklin Wolf
Arnold Wolf and Fern Tablin
Margaret Wyant
Sam and Kuna Yankell
Brian and Marion Young
Loretta Young
Chris Young
Marc and Pam Zisselman
Esther Zoblin
Jennifer Zwetolitz

* Denotes a deceased supporter
+ Denotes a gift of goods or services

^ Includes a matching gift
~Includes a monthly gift

This list represents gifts made through March 25, 2024

Gifts in Memory Of...

TOM BEAM
Carol Beam

ERNEST CUFF
Ellen Deacon

MARJORIE DICKEY
Rhonda Dickey

RITA FALCHEK
Stephen Flachek and
John Offidani, III

MARY JANE FISCHER
Sally J. Linnett

JERRY E FREEDMAN
Sherri Freedman

**DR. MINDY
GOLDBERG ROSE**
Nancy and Bob Elfant
Charles Rose
Dr. Allison Rose and Mr. Josh Rose
Mike Salmanson and Tobi Zemsky

LEONA E. GRAHAM
Rick and Sharon Graham

FORK

LUNCH BRUNCH & DINNER



306 MARKET ST PHILA | FORKRESTAURANT.COM

Thank You to Our Supporters

Gifts in Memory Of...

JAMES J. HANEY III MD

Anonymous (4)
Sherrl Becker
Christopher Bradie
Janice Dathe
Bill Dooley
Ann Marie Fritz
Coeli Genter
Richard Graham
Joanne Halscheid
Jennifer Heist
William Herring
Michael Johnson
Kenneth Klein
Madeline Levy
Geraldyn Moyer
Brett Murphy
Barbara Rubel
Lindsay Seelig
Karen Ulmer
Frank and Carol Vita
Richard Wesh
Debra Whitby Norman

LUCKY HERTFELDER AND SHARON CLAUSON

Heidi Hertfelder

KATIE ROSE HORN

Meghan Horn

DR. STEPHEN KAY

Dr. Rhonda Karp

MARY C. KEENAN

Kara Keenan Sweeney

MILT AND ROZ KLEIN

Ken, Eva and Aaron Klein

JOHN KOSCELNIK

Valerie Koscelnik

SHEILA KUTNER

Dr. Beverly Emanuel

NANCY LANG BOYER

Mary Ann Boyer

WENDY AND BILL MACLAUGHLIN

Catharine Slusar and
Whit MacLaughlin

SUE ANN MARBURG

Bob Marburg

MIRIAM NORRIS

Daniel and Jeannette Norris

JUDITH NOVELLINO

Andrew S. Berry

KRISTIN OSGOOD LAMELAS

Diane Hlywiak, Esquire

EVELYN OSHEROW

Sharon Goldman

GEORGE AND DOLORES OTTINGER

Stephen and Kathy Thompson

HARRY PORTER SR.

Anonymous

RICHARD REPETTO

Dan Rothermel and
Michael Hairston

ANNIE RICHARDSON

Anonymous

JULIAN ROSTAIN

Anthony Rostain

GEORGE R. SZYMANSKI, ESQ.

Dr. Dolores Szymanski

JOEL SEIDEL

Devra Seidel

GERI TALLONE

Scott and Lynda Glading

CHRISTINA VAUGHT

Anonymous
M & M Baltrush
Kathleen Baltrush
John Baltrush and Pam Allen
John Barr
Wallace and Denise Bateman
Catherine Biagetti
Pam and Steve Briggs
Richard Cieslak
Kathleen and Bob Cochrane
Paula Cortes
Elizabeth D'Crux
Gina and Charlie DiPonziano
Joyce Dzekciorius
Mike Falcone
Katherine Fandetti
Daniel Farah
Larry Friedman and Lisa Fletcher
The Gamberdella Family
Gifford Family
Sheila L. Greer
Marjorie Grebow
Nancy Haverstock
Colleen Hulse
Richard Kordorsky
Joe and Doreen Kordorsky
Larry and Gail Malcolm
Anna Lee and Andy McAleese
Gregory and Linda Nosal
Sharon Pacek and Paul Harvitz
Casea Paradis
Jerrold Pierce and Linda Fletcher
Michael and Lyndsay Pio
Regina Poletti
Tim and Joan Riddle
Jerry and Nancy Roberts
The Divas
Deborah Proto and
Kimberly Saccucci
Carol and Allen Short
Ryan and Amber Simatic
Cindy and Randy Simatic
David and Liza Spaventa
Paul Traviline
Sharon and Jim Wheeler

ASTER WAMSER

Polly Shaffer

SAMUEL WEINBERG

Taube and Sam Weinberg

FRED AND ARLEEN WEINSTEIN

Judy and Palmer Hartl

DARRAGH WRIGHT KARR

Darragh Wright Karr's family

DEBBY YODER

Paul and Andrea Downie

CASEY ZEFF

Eileen Heisman and Marty Tuzman

Gifts To Named Funds...

NAMED SEATS THIS SEASON

Anonymous
George J Ahern
Megan Bellwoar and
Michael Hollinger
Stephen and Laura Harrison
Joseph Pinto
Matthew Pinto
Thomas Pinto
Ann Pinto McCarney
Rudy Sprinkle and Andrea Barsevick
Robert and Lisa Trucksess
Joyce Weiner and Albert Tedesco

ANDREA MENGEL FUND

Derick Dreher
Independence Foundation
Susan Sherman

ARTISTIC FUND

Morna Livingston

ANN B. MCNAMEE FAMILY THEATRE FUND

Dennis and Louise Buckley
Dennis and Melissa Rodkin
Robert and Joan McLaughlin

THE DR. MINDY GOLDBERG ROSE INTERNSHIP FUND

Josh Asher
Larry Cohen
Nancy and Bob Elfant
Equitable/ AXA Foundation
Kate and Barry Muchnick
Ellen Panofsky and Mark Noel
Jon Panofsky
Dr. Allison Rose and Mr. Josh Rose
Charles Rose
Heidi and Mitchel Rubin,
In Honor of Nathan Dorman
Dorothy Sheridan

THE BERNARD AND CAMILLE ROSENBERG FAMILY THEATRE FUND

Bernard and Camille Rosenberg

Board and Committee Members

Board of Directors

Michael A. Donato, *President*
Rayenne Chen, *Vice President*
Rhonda Ball, *Vice President*
Michael S. MacFarland, *SVP, Treasurer*
Richard L. Maimon, *Secretary*
Kelly Colarelli
Anne Cook
Joy L. De Jesús
Robert Elfant
Nancy Elfant
Elizabeth A. Fernández-Viña
Elizabeth H. Gemmill
Peter Hamilton
Jen Harmelin
Richard Harris
Valerie I. Harrison
Ann Marie Horner
Holly Kinser
Dr. Saifuddin T. Mama
John J. McCawley, *P.E.*
Amy L. Murphy
Terrence J. Nolen
Hon. Rosalyn K. Robinson
Charles H. Rose
Monica Rosenthal
Genieve Shields
Lee van de Velde
Steve Wolfson
Diane Dalto Woosnam
Ellen Yin

Board Executive Committee

Michael Donato, *Chair*
Michael MacFarland
Rhonda Ball
Rayenne Chen
Anne Cook
Joy L. De Jesús
Robert (Bob) Elfant
Holly Kinser
Richard L. Maimon
Lee van de Velde

Finance Committee

Michael MacFarland, *Chair*
Juan De León Domenech
Anne Marie Horner
Dan Hilferty
Daniel Krewson
Eliza Orleans
Harvey Swedloff
Steve Wolfson

Board Development Committee

Rayenne Chen, *Chair*
Michael Donato
Robert Elfant
Joy L. De Jesús
Holly Kinser
Saifuddin T. Mama
Lee van de Velde
Diane Dalto Woosnam

Personnel Committee

Rhonda Ball, *Chair*
Michael Donato
Elizabeth H. Gemmill
Richard Harris
Michael S. MacFarland
Charles H. Rose

Engagement Committee

Lee van de Velde, *Chair*
Anne Cook, *Chair*
Elizabeth Fernández-Viña
Nancy Elfant
David Hackney
Camille Rosenberg
Lillian Ransom
Hope Yursa

Facilities Committee

Richard L. Maimon, *Chair*
Mike Green
James Kronzer
John J. McCawley
H. Hetherington Smith
Chris van de Velde

Equity, Diversity, and Inclusion (EDI)

Rayenne Chen
Anne Cook
Joy L. De Jesús
Robert Elfant
Kash Goins
Richard Harris
Dr. Valerie Harrison
Zuhairah McGill
Amy L. Murphy
Bi Jean Ngo
Terrence J. Nolen
Hon. Judge Rosalyn Robinson
Clayton Tejada
Orelí Uzdavinis

Young Friends Committee

John Connolly
Elizabeth A. Fernández-Viña
Aby Rodríguez



all you need is fresh flowers

WWW.NEFLOWERBOUTIQUE.COM
NORTHEASTFLOWERS@GMAIL.COM
@NE_FLOWER_BOUTIQUE

OLD CITY
(267)570-7707
60 N 2ND ST

NE PHILLY
(215)437-1913
11702 BUSTLETON AVE

NE FLOWER BOUTIQUE
www.neflowerboutique.com

Staff

Artistic	Producing Artistic Director.....	Terrence J. Nolen
	Associate Artistic Director.....	Jonathan Silver
	Artistic Assistant.....	Nick Hatcher
	Commissioned Playwrights.....	Lorene Cary, Kash Goins, Robi Hager, Rogelio Martinez, Iraisia Ann Reilly
Administrative Management	Managing Director.....	Amy L. Murphy
	General Manager.....	Clayton Tejada
	Business Manager.....	Paola Cruz
	Audience Services Manager.....	Tanner Richardett
	Facilities And Office Manager.....	Larry Brooks
	Arden Professional Apprentices.....	K.C. Casey, Laura Duff, Meili Huang, Tomas Torres
Marketing	Director of Marketing and Communications.....	Mike Hogue
	Marketing Manager.....	Erika Byrnison
	Publicist.....	En Route Marketing
	Marketing and Group Sales Associate.....	TJ Harris
Development	Director of Development.....	Jessica Abel
	Manager of Individual Giving.....	Orelí B. Uzdavinis
	Manager of Institutional Giving.....	Matthew Reddin
	Development Coordinator.....	Tylar Benedetto
Education	Director of Education and Community Outreach.....	Hannah Cordes
	Education Outreach Manager.....	Josh Thorps
	Teaching Artists.....	Elise D'Avella, TJ Harris, Campbell O'Hare, Brennen Malone, Donovan Lockett, Mariah Ghant, Liz Crino, Kennedy McAlister, Jessica Money, Taylor J Mitchell, Julianna Babb, Cindy Paul, Hannah Catanoso, Grant Uhle, Nicole Renna, Andrea Rose Cardoni, Jennifer Peacock, Giavanna Genovese, Justin Yoder, Seraina Schottland, Foster Longo, Danny Walsh, Jessy Gruver, Francine Odri, Marie McVeigh, Bari Rose Secondino, Brianna Arce, Nic Ecker
	Dr. Mindy Goldberg Rose Intern.....	Mars Berger
Front of House	Box Office Manager.....	Jason Blacketer
	Assistant Box Office Manager.....	Amanda Adams
	House Manager.....	David Demnicki
	Front of House Associate.....	Ryn Bondi
	Front of House Assistants.....	Becky Fleckner, Catey Midla, Chelsey Gaskins, Emily Hernandez, Glynnis Nadel, Ian Gaskin, Kat Pilkus, Margaux Cattelona, Syaera Cort, Will Vence Jr., Victoria Zdunkiewicz
Production	Production Manager.....	Kate Nelson
	Technical Director.....	Evan Lewis
	Assistant Technical Director.....	John Winter
	Charge Scenic Artist.....	Kristina Chadwick McGrath
	Electrics Supervisor.....	Martin Stutzman
	Sound Supervisor.....	John Kolbinski
	Costume Supervisor.....	Stephanie Shaw
	Properties Supervisor.....	Shane Dreher
	Assistant Stage Manager.....	KC Casey
	Audio Engineer.....	Emily Muirhead
	COVID-19 Safety Managers.....	Clayton Tejada, Jonathan Silver
	Electricians.....	Anna Ryabova, Colin Lang, Emily Muirhead, Heather Pynne
	Electrics Programmers.....	Ana Crawford, Isabella Gill-Gomez
	Stitchers.....	Peter Adams, Amanda Carano, Emily Muirhead
	Dr. Mindy Goldberg Rose Intern.....	Faith DeShields

CREATIVE REAL ESTATE FOR CREATIVE PEOPLE



Happy Clients

Charlie DelMarcelle
*Barrymore Award
Winning Actor*
Katherine Fritz
Costume Designer



BENJAMIN CAMP

REALTOR® & CCSJ Team Leader
Actor & Producer



JAMES SUGG

REALTOR®
Actor & Sound Designer

The CCSJ Team is proud to continue our *Support the Arts Initiative*, donating to local performing arts organizations for every closing. Whether you're on-stage, behind the scenes, or in the audience, choose the REALTOR[®]s who support our arts community.



Contact
Benjamin



📞 610.220.8550
📧 ben@ewrhomes.com



Contact
James



📞 267.303.2827
📧 sugg@ewrhomes.com

215.893.9920

THESTELLARCHOICE.COM | ELFANT WISSAHICKON
2000 PINE ST, PHILADELPHIA, PA 19103

Elfant
Wissahickon
- REALTORS® -