


ARDEN THEATRE COMPANY PRESENTS



THE LEHMAN TRILOGY

By
Stefano Massini

Adapted by
Ben Power

Arden
THEATRE CO.

MAR 7 – APR 7
On the F. Otto Haas Stage

ANNOUNCING TWO OF OUR MAINSTAGE SHOWS
JOIN US NEXT SEASON **2024/25**
SUBSCRIBE TODAY AND RECEIVE PRIORITY SEATING

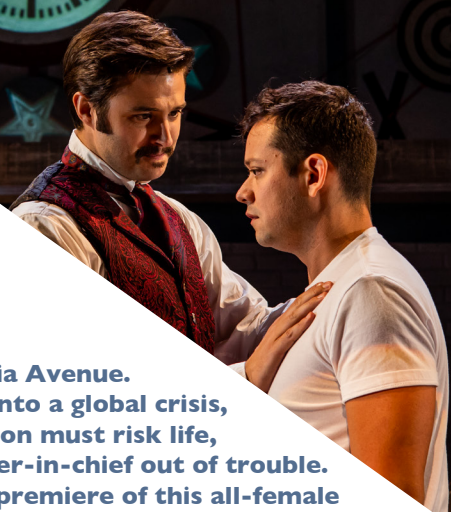
POTUS:

Or Behind Every Great Dumbass Are Seven
Women Trying to Keep Him Alive

WRITTEN BY SELINA FILLINGER
DIRECTED BY JENNIFER CHILDS

THREE TONY AWARD NOMINATIONS

One four-letter word is about to rock 1600 Pennsylvania Avenue. When the President unwittingly spins a PR nightmare into a global crisis, the seven brilliant and beleaguered women he relies upon must risk life, liberty, and the pursuit of sanity to keep the commander-in-chief out of trouble. Comic dynamo Jennifer Childs directs the Philadelphia premiere of this all-female farce – a hilarious homage to the women who keep things running and get the job done.



RENT

MUSIC, LYRICS, AND BOOK BY JONATHAN LARSON
DIRECTED BY TERRENCE J. NOLEN & STEVE PACEK

PULITZER PRIZE AND TONY AWARD-WINNING MUSICAL

At the end of the millennium, a group of bohemians in the East Village of New York City struggle with gentrification, love, loss and legacies amidst the HIV/AIDS crisis. In this immersive, exciting production, Jonathan Larson's Tony Award and Pulitzer Prize-winning musical, based on Puccini's *La bohème*, will transform the F. Otto Haas Stage with the iconic chords of "Seasons of Love," "Santa Fe," "I'll Cover You" and many others.



PLUS, THREE SHOWS TO BE ANNOUNCED!

TO SUBSCRIBE:
215.922.1122
ardentheatre.org

WELCOME

From the Producing Artistic Director



Welcome to *The Lehman Trilogy*, an extraordinary play that has become an international sensation in recent years. It tells a sweeping story of America and capitalism itself through the eyes of three brothers and their descendants. This is a play that is surprising, epic in scope, moving in its humanity, and audaciously committed to the power and possibility of live performance. *The Lehman Trilogy* is richly deserving of the acclaim it has received – and we are honored to be producing this Philadelphia premiere with an all-Philadelphia team of actors, designers, artisans, and crew.

As we continue our 23/24 season, we are of course planning for next year. If you have already taken the leap and become a Leap of Faith subscriber, thank you! We will be doing a five-play mainstage season and are excited to announce two of those five productions. We will open with the raucous comedy *POTUS: Or, Behind Every Great Dumbass Are Seven Women Trying to Keep Him Alive* by Selina Fillinger, directed by comic dynamo Jennifer Childs, and close with a new production of *RENT*, the groundbreaking musical by Jonathan Larson that features a thrilling, soaring score. Two great shows that will shake the rafters of the Haas in their own unique ways. As we finalize the rest of our season, we ask that you join us as a subscriber. Your investment in our work fortifies and inspires us. It guarantees you five nights, out with others, seeing the work of some of Philly's great artists – and demonstrates an investment not only in the Arden but in the importance of live theatre and a vital Philadelphia.

We are also excited to announce that we will be holding a special one-night only concert on Monday, June 3rd as our annual gala fundraiser. This concert will feature Arden artists singing songs they did here (and songs they wish they could have done). They will also share some behind the scenes stories, favorite memories, and a little gossip. There will be a chance for audience members to be a part of the show with a competition of Arden musical trivia plus a chance for you to come to a rehearsal beforehand and join us onstage. It will be a great evening of song, story, laughter, and community while raising money for the Arden's artistic and educational programs. Information can be found at ardentheatre.org/GardenParty.

The Lehman Trilogy is an incredibly unique theatrical event and an ambitious undertaking for any theatre. My thanks to everyone who has given so much of themselves to bring this epic piece to life. And to you for joining us on the journey.

A Message from our Honorary Producers



David and I first experienced *The Lehman Trilogy* in a movie theater – watching a simulcast of the London production – and were mesmerized. Even from that distance, it was one of the best productions we had ever seen, and we knew we had to see it live, in the theater. We were therefore thrilled to learn the Arden would be putting its inimitable spin on this majestic story spanning 150 years of the Lehman family, from Alabama to New York – all brought to life by three tireless actors playing multiple family members without any costume changes. A review written in the 2019 National Review succinctly and accurately describes the play: “All the characters are warm and flawed. Everybody is ordinary, even when they are extraordinary.”

The Arden is our theatrical home, and our experiences have taught us to expect excellence from the outstanding teams that operate both in front of and behind the curtain. The unwavering dedication, the commitment to their craft, and the varied selection of shows has never failed to stimulate our thinking and imagination. The annual pitch to take a ‘leap of faith’ and subscribe without knowing what’s in store is a misnomer, because the Arden never disappoints.

Theater is not just about being entertained, but being a part of a collective experience, one that even the best of films or television cannot duplicate. There’s no better place than the Arden to engage in that experience.

“So, good night unto you all. Give me your hands, if we be friends, and Robin shall restore amends.”
– William Shakespeare

Enjoy the show, and tell all your friends about it!

Christina and David Fryman

ACCESSIBILITY SERVICES

The Arden complies with all applicable federal, state, and local statutes and laws to ensure accessibility to individuals with disabilities who visit our theater. We invite you to visit ardentheatre.org/plan-your-visit/accessibility for more details about our services and offerings.



Accessible Seating & Seating Requests

Removeable seats for wheelchairs & Accommodations for comfort, mobility, & hearing or vision needs



NEW! Smart Caption Glasses (SCG)

Wearable, customizable closed captioning glasses.
Available 1 week after Opening Nights.
Ask Box Office to borrow.



Assistive Listening Devices (ALDs)

Amplification of all onstage sounds. Ask Box Office to borrow.
Available with headphones or a t-coil neck loop.



Large Print Programs

Enlarged-text printed programs for low-vision patrons.
Ask Box Office to borrow.



Open Captioning (OC)

Text display of all dialogue and sounds.
Available select Friday & Saturday performances.



Shadow American Sign Language (ASL) Interpretation

Live ASL interpretation shadowing the action of the show.
Available at select Children's Theatre performances.



Audio Description (AD)

Live verbal commentary of all visual elements.
Ask Box Office for access.
Available select Friday & Saturday performances.

We encourage any feedback and suggestions regarding our accessibility services to ensure we're doing the best we can. Please contact Tanner Richardett, Audience Services Manager, at trichardett@ardentheatre.org

ARDEN THEATRE COMPANY PRESENTS

THE LEHMAN TRILOGY

By STEFANO MASSINI

Adapted by BEN POWER

Production co-conceived by
JORGE COUSINEAU and TERRENCE J. NOLEN

Scenic/Video Designer
JORGE COUSINEAU

Costume Designer
ASAKI KURUMA

Lighting Designer
KRISTA SMITH+

Original Music/Sound Designer
CHRISTOPHER COLUCCI

Dialect Coach
NEILL HARTLEY

Movement Coach
MELANIE COTTON

Stage Manager
LYNDSEY CONNOLLY*

Assistant Director
CASIE GIRVIN

Associate Director
JONATHAN SILVER

Directed by TERRENCE J. NOLEN[^]

March 7 - April 7, 2024

Honorary Producers: Christina and David Fryman

The Lehman Trilogy is presented by arrangement with Concord Theatricals on behalf of Samuel French, Inc.
www.concordtheatricals.com

The Lehman Trilogy was first performed at the Royal National Theatre, London on 12th July, 2018.
The original Italian text of *The Lehman Trilogy* by Stefano Massini was first published by Einaudi in 2014

THE VIDEOTAPING OR MAKING OF ELECTRONIC OR OTHER AUDIO AND/OR VISUAL RECORDINGS OF THIS PRODUCT AND DISTRIBUTING RECORDINGS OR STREAMS IN ANY MEDIUM, INCLUDING THE INTERNET, IS STRICTLY PROHIBITED, A VIOLATION OF THE AUTHOR(S)'S RIGHTS AND ACTIONABLE UNDER UNITED STATES COPYRIGHT LAW.



Arden Theatre Company receives state arts funding support through a grant from the Pennsylvania Council on the Arts, a state agency funded by the Commonwealth of Pennsylvania.



+ Member of United Scenic Artists
Local USA 829

* Member of Actors' Equity Association,
the Union of Professional Actors and
Stage Managers in the U.S.



[^] The director is a member of the Society
of Stage Directors and Choreographers,
Inc., an independent national labor union.

NEXT ON STAGE!

ONCE ON THIS ISLAND

Lyrics and Book by
Lynn Ahrens

Music by
Stephen Flaherty

Directed by
Amina Robinson



Join us for this Tony Award-winning captivating musical that takes audiences on a journey to the Caribbean, where love and folklore intertwine.

MAY 16 – JUNE 16

A Note

From the Associate Director



It is a different time: November 13th, 2021 and I enter the Nederlander Theatre in New York City. In an effort to understand how major market theatre is returning to live presentations, this is the 2nd in-person show I am attending this weekend for an exploratory mission because the Arden is about to begin rehearsals in 6-weeks to remount *A Streetcar Named Desire* – paused, of course, for 2 years – and we need to figure out how we will bring back audiences safely and comfortably.

I am one of those people that likes to know very little about a new show I am about to watch. I prefer to remain present with an open heart and no expectation. For this one, all I know is that it came from London, the scope of the play is massive, and the reviews are stellar. Terry is with me. We discuss the exactitude and grade school reprimanding the ushers constantly give: reminding us to not leave our seats except only to use the restroom, to turn our phones off, and to KEEP OUR MASKS ON.

It is a different time. And I still know nothing about this play.

Then...time slows down. Or speeds up?

Several hours pass and I witness one of the greatest feats of storytelling and artistic athleticism. Ever.

The first thing I say to Terry is that I want my parents to see this play. More specifically, I want my Dad to see this play. And I want Arden audiences to see this play. And I want Philadelphia actors to speak the words of this play.

I tell Terry that I'm confident we can, and should, produce *The Lehman Trilogy*. He needs to direct it. And, for the first time in 7 seasons as a staff member, I request to be on the Artistic team of a production. Because I passionately believe in this style of storytelling. Because I want to experience all 200+ hours it takes to rehearse a show like this one. Because I am of European Jewish descent, was raised in a Reform Jewish home, and can offer cultural and contextual support to some of the demands of the play. Because this play is a great story!

Spending over a year of research and reading, I dive deep into the lives of Henry, Emanuel, and Mayer; discover truths about their relationship to American slavery that are not wholly reflected in the play*, and engulf myself in the ripple effect of their business dealings.

Two-and-a-half years and 200+ hours of rehearsal later, everything is aligned to this moment. With you here. About to embark on this journey with us. Because, with an open heart and no expectation, I saw a play I knew nothing about. In a different time.

A handwritten signature in blue ink that reads "JONATHAN". The signature is stylized, with a large, looped "J" and the name "ONATHAN" written in a simpler, slightly slanted font.

* For more context, go to ardentheatre.org/lehmanNYR to read the New York Review article: "The Lehman Trilogy" and Wall Street's Debt to Slavery by Sarah Churchwell

Cast of Characters

Mayer Lehman.....	Akeem Davis*
Emanuel Lehman.....	Charlie DelMarcelle*
Henry Lehman.....	Scott Greer*

UNDERSTUDIES

Gabe Moses (Mayer Lehman), Adam Howard (Emanuel Lehman), Kevin Naddeo (Henry Lehman)



Arden Theatre Company is a professional company employing members of Actors' Equity Association.
*Member of Actors' Equity Association, the Union of Professional Actors and Stage Managers in the United States.

Please check houseboards for any program changes.

Taking pictures and/or making visual or sound recordings is expressly forbidden.

Actors' Equity Association (AEA), founded in 1913, represents more than 45,000 actors and stage managers in the United States.

Equity seeks to advance, promote and foster the art of live theatre as an essential component of our society. Equity negotiates wages and working conditions, providing a wide range of benefits, including health and pension plans. AEA is a member of the AFL-CIO, and is affiliated with FIA, an international organization of performing arts unions. www.actorsequity.org



AKEEM DAVIS (Mayer Lehman) Arden: *A Streetcar Named Desire*, *Tiny Beautiful Things*, *Gem of the Ocean*, *A Doll's House* (Barrymore Award for Outstanding Supporting Performance in a Play). Regional: *The Arsonists* (Woolly Mammoth Theatre Company); *King John*, *District Merchants* (The Folger Theatre); *Buzzer* (Theatre Exile); *Shitheads* (Azuka Theatre); *Marcus/Emma* (InterAct Theatre Company); *All My Sons* (People's Light); *Lobby Hero*, *In the Blood* (Theatre Horizon); *The Brother's Size* (Simpatico Theatre). Florida State University, 2009 Bachelor's in Humanities. Barrymore and Helen Hayes nominated actor. Recipient of the 2015 F. Otto Haas Award for Emerging Philadelphia Theatre Artist. For Ash.



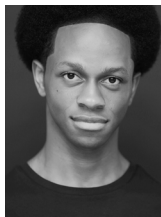
CHARLIE DELMARCELLE (Emanuel Lehman) Arden: Little Charles in *August: Osage County*, Mr. Arable/Gander in *Charlotte's Web*, Baloo in *The Jungle Book*, Matthew Baroni in *Funnyman*. Regional: Act II Playhouse, Azuka Theatre, Delaware Theatre Company, EgoPo Classic Theater, Inis Nua, Lantern Theater Company, Theatre Horizon, and Walnut Street Theatre. Proud faculty of West Chester University. Thanks to Terry, Jon, Lyndsey, Akeem, Scott and this incredible crew. All the love to Katherine...for everything. <http://www.delmarcelle.com>



SCOTT GREER (Henry Lehman) Some Arden favorites: *Into the Woods*, *Wittenberg*, *Death of a Salesman*, and *Once*. He is a 30-year veteran of Philadelphia theatre and has worked for 1812 Productions, Walnut Street Theatre, InterAct Theatre Company, The Wilma Theater, People's Light, Delaware Theatre Company, Theatre Exile, Act II Playhouse, and many more. Regionally, he has worked for Actors Theatre of Louisville, Round House Theatre, Cape May Stage, and The Pearl Theatre Company in New York. He has won six Barrymore Awards for Excellence in Theatre, including the F. Otto Haas Award for Emerging Theatre Artist. He was named "Best Theatre Talent" by Philadelphia Magazine. Love to Jen & Lily.



ADAM HOWARD *hel/him* (u/s Emanuel Lehman) Arden: Wilbur in *Charlotte's Web*. Regional: Him in *Camp Siegfried* (Theatre Exile), Stanley in *Brighton Beach Memoirs* (Delaware Theatre Company), Stinky Pete in *Carroll County Fix* (Azuka Theatre), as well as work at Hedgerow Theatre, People's Light and Shakespeare in Clark Park. Adam is a graduate of The University of the Arts: BFA in Acting w/ a Minor in Creative Writing. As always, love to Mom.



GABE MOSES (u/s Mayer Lehman) Arden: Starveling in *A Midsummer Night's Dream* (2020 Virtual Production). Regional: Fred in *A Christmas Carol* (People's Light); Tribe & u/s Hud in *HAIR* (Cortland Repertory Theatre); u/s Garry, Frederick, Tim in *Noises Off!* (Delaware Theatre Company); *Ragtime*, *Crazy For You*, *Much Ado About Nothing*, and *Henry IV Parts 1 & 2* (Pennsylvania Shakespeare Festival). BA in Theatre from DeSales University. Thankful for my supportive family, friends, and love, CaSandra Kay. Gabe dedicates his art form to amplifying black and brown voices.



KEVIN NADDEO (u/s Henry Lehman) Arden: u/s Fleshlumpeater in *The BFG*. Previous Credits: *As You Like It* (Richmond Shakespeare Festival), *Frankenstein*, *The Burials*, and *Julius Caesar* (CCM). BFA in Acting from University of Cincinnati - College Conservatory of Music. Thanks to Terry, Jonathan, the cast and crew, and especially to friends and family for their never-ending love and support! Kevinnaddeo.com

PETER CHAPMAN is author of *The Last of the Imperious Rich: Lehman Brothers, 1844-2008*, a leading reference on the history of the Lehman family.

TERRENCE J. NOLEN (Director/Producing Artistic Director) is Co-founder and Producing Artistic Director of Arden Theatre Company. Favorite Arden productions include all-Philadelphia casts of *August: Osage County*, *Death of a Salesman*, *The Grapes of Wrath*, and *Hedda Gabler*; and such musicals as *Next to Normal*, *Sweeney Todd*, *Pacific Overtures*, *Violet*, and *Caroline, or Change*. Terry directed the inaugural production of Arden Children's Theatre, *Charlotte's Web*. He has directed seven world-premiere plays by Michael Hollinger, three by Dennis Raymond Smeal, three by Michael Ogborn, two by Rogelio Martinez, and Bruce Graham's *Something Intangible*. Terry has been nominated for 27 Barrymore Awards for his directing work at the Arden and received awards for *The Baker's Wife*; *Sweeney Todd*; *Opus*; *Winesburg, Ohio*; *Assassins*; *Something Intangible*; and *Fun Home*. He directed Michael Hollinger's *Opus* at Primary Stages in New York and was nominated for a Lucille Lortel Award for Outstanding Director. His short film *The Personal Touch* was nominated for an Emmy Award.

JONATHAN SILVER (Associate Director) has been the Associate Artistic Director of the Arden since 2017. After completing his BFA actor training from the University of Cincinnati's College-Conservatory of Music, Jonathan relocated to Philadelphia and has called the city his home for the past 14 years. In that time, he was an actor performing with various companies including Arden Theatre Company, Delaware Theatre Company, 59E59 (NYC), Bristol Riverside Theatre, Act II Playhouse, and 11th Hour Theatre Company. While appearing on stage throughout the region, Jonathan collaborated administratively with Arden Theatre Company's Artistic Department – Assistant Directing the mainstage productions *Incorruptible*, *Under the Skin*, and *Macbeth*, serving as the Casting Associate for 2 seasons, and was the Line Producer for the inaugural Master Storyteller Award presented to Stephen Sondheim. Currently, Jonathan is an inaugural member of the Board of Directors of The Strides Collective – an emerging theatre company which produces and develops theatrical work by emerging playwrights that embraces the queer experience through authentic, modern, and innovative storytelling.

CASIE GIRVIN (Assistant Director) is a Philly-based actor, singer, circus artist and deviser. Casie is in the process of starting the Circus Opera Company with their partner, devising and performing new opera through dynamic circus. She made her Arden debut as Charlotte in the 2022/2023 production of *Charlotte's Web*. Other regional credits: *Shakespeare In Love* (Capital Repertory Theatre,) *Bernstein Mass* (Philadelphia Orchestra), *Make Bank*, *Bodies*, *Annie*, *The Full Monty*. Outside of theatre, Casie teaches voice and acrobatics. Proud Temple Owl. [@casiegirvin](https://www.casiegirvin.com) www.casiegirvin.com

JORGE COUSINEAU (Scenic/Video Designer) Arden: over 70 productions designing sound, sets, and projections. Favorites: *Assassins* (2023 & 2007), *Fun Home*, *Gypsy*, *Passion*, *Parade*, *The Secret Garden*, *Three Sisters*, *Next To Normal*, *Opus*, and *Sunday In The Park With George*. Regional: *Rinaldo* (The Glimmerglass Festival); *We Shall Not Be Moved* (Pittsburgh Opera); *Titanic* (Fulton Theatre and Maine State Music Theatre); *20,000 Leagues Under the Sea*, *Seedfolks*, *Matilda*, *The Musical* (Children's Theatre Company); *When Tang Met Laika*, *The Whistleblower* (Denver Center for the Performing Arts); *Opus* (Primary Stages); *Heroes of the Fourth Turning*, *Language Rooms*, *Scorched* (The Wilma Theater).

Who's Who

KRISTA SMITH (Lighting Designer) Arden: *Red Riding Hood*. Regional: Krymov Lab NYC, *Big Trip* (La MaMa), *A Christmas Carol* (People's Light), *One Man Nutcracker* (Theatre Exile), *Wig Wag* (Fringe Arts), *The Thanksgiving Play* (Dorset Theatre), *What the Constitution Means to Me* (Weston Theater Company), *sandblasted*, *Head Over Heels*, *TOWN* (Theatre Horizon), *The Mousetrap* (Hartford Stage), *Letters You Will Not Get* (The American Opera Project), *Ni Mi Madre* (Rattlestick Theater), *Zoetrope* (Exquisite Corpse Company). Training: MFA Yale School of Drama. Proud member of USA 829. www.KristaSmithLD.com

ASAKI KURUMA she/her (Costume Designer) is originally from Japan. She is a multi-disciplinary artist who has been working professionally in the Philadelphia area. Selected costume design credit: *The Lightening Thief*, *The Perry Jackson Musical*, *Songs for the New World* (Drexel Theatre), *Cymbeline* (Delaware Shakespeare), *Death of a Driver*, *72 Miles to Go...*, *Man of God* (InterAct Theatre Company), *Backing Track* (Arden Theatre), *The Taming!*, *Pericles* (Shakespeare in Clark Park), *House of Desires* (Villanova Theatre), *Boycott Esther* (Azuka Theatre), *Las Mujeres* (Power Street Theatre Company), *Tiger Style!* (Philadelphia Asian Performing Artists). MA -Villanova University. Next up: *Tick, Tick... Boom!* At Theatre Horizon.

CHRISTOPHER COLUCCI (Original Music/Sound Designer) Arden: *The Snow Queen*, *Metamorphoses*, *Peter Pan*, *The Whipping Man*, *Gee's Bend*, *Rabbit Hole*, *The Pavilion* and *Charlotte's Web* (2011, 2018, 2022). Recent Sound Design: *Tartuffe*, (Lantern Theatre Company); *Camp Siegfried* (Theatre Exile); *The Flatlanders* (1812 Productions); *Who's Afraid of Virginia Woolf?* (Walnut Street Theatre); *Noises Off* (Delaware Theater Company). Next: *The Last Yiddish Speaker* (InterAct) and *The Comedy of Errors* (Lantern Theater Company). 2016 Pew Fellowship in the Arts. Eight Barrymore Awards for Outstanding Original Music and Sound Design. BA in Philosophy/Theology (Eastern University); MA in Philosophy (Western Kentucky University). Thank you Geoff Langley, Justin Yoder, and Willem Cousineau for your beautiful playing.

LYNDSEY CONNOLLY (Stage Manager) Arden: Stage Manager for *The BFG* (*Big Friendly Giant*), Assistant Stage Manager for *Assassins* and *Every Brilliant Thing*, Deck Crew for *Clyde's*. Regional: Stage Manager for *the pigeon* (The Strides Collective); Stage Manager for *Hannah + The Healing Stone* (terraNOVA Collective). Education: Entertainment and Arts Management with a concentration in Theatre (Drexel University).

AMY L. MURPHY (Managing Director) A Philadelphia native, Amy co-founded the Arden in 1988 with Terrence J. Nolen and Aaron Posner. She is especially proud of the Arden Professional Apprenticeship program and its contribution to the Philadelphia cultural community. She completed the Executive Program for Nonprofit Leaders-Arts. Amy has served on the Board of the Cultural Alliance and Theatre Philadelphia. She has served on panels for the National Endowment for the Arts, the New Jersey State Arts Council, Theatre Communications Group and the Philadelphia Cultural Fund. Amy was named a Hepburn Fellow 2008-9 by the Katharine Houghton Hepburn Center at Bryn Mawr College.

ARDEN THEATRE COMPANY Founded in 1988, Arden Theatre Company is dedicated to bringing to life great stories by great storytellers—on the stage, in the classroom, and in the community. We create and produce new work through the Independence Foundation New Play Showcase. The Arden Professional Apprenticeship program trains future theatre leaders, and Arden Drama School classes teach children and teens about the craft of making plays. Our access program, Arden For All, makes our work available to the entire community through subsidized tickets and books for economically disadvantaged young people, and our Arden Arts Scholarship Fund provides scholarships for Arden Drama School classes and camps. The Arden has received twelve *Philadelphia Magazine* “Best of Philly” Awards, the Arts & Business Council’s Arts Excellence Award, six *City Paper* “Reader’s Choice” Awards, four *Philadelphia Inquirer* “Theatre Company of the Year” citations, 77 awards and 418 nominations from the Theatre Philadelphia’s Barrymore Awards for Excellence in Theatre, and was named “Best Theatre Company” by *Philadelphia Weekly* in 2009. Arden Theatre Company, a professional, nonprofit 501(c)(3) theatre company, is a member of the Theatre Communications Group, the League of Resident Theatres, Greater Philadelphia Cultural Alliance, Philadelphia Convention and Visitors Bureau, and Old City Arts Association.

Arden Theatre Company wishes to thank Amy Dugas Brown, Michael Kambouroglou, Leo Levine, and Jessica Roemer.



SAVE THE DATE

Make Our



GARDEN

Grow

A one-night-only concert and
celebration in support of the Arden

Monday, June 3, 2024 | 6–10 PM

Arden Lobby & F. Otto Haas Stage
40 North 2nd Street | Old City, Philadelphia

FEATURING

- A delightful musical program of Arden's greatest hits
- A "Garden Party" reception with open bar and tasty local bites
- A Silent Auction with amazing prize packages we know you'll love

Tickets start at \$149.

Sponsorship and
advertising opportunities
available.

More information at
ardentheatre.org/GardenParty.



2023/24

DINING PARTNERS

Restaurants in Old City and surrounding neighborhoods are ready to welcome you!
We recommend these restaurants that support the Arden.

Amada

217-219 Chestnut Street
215.625.2450
amadarestaurant.com
@amadaphl

Café Tolia*

26 N. 3rd Street
267.687.2533
cafetolia.com
@cafetolia

Cuba Libre*

10 S. 2nd Street
215.627.0666
cubalibrerestaurant.com
@cubalibrephiladelphia

The Franklin Fountain*

116 Market Street
215.627.1899
franklinfountain.com
@franklinfountain

Fork

306 Market Street
215.625.9425
forkrestaurant.com
@forkrestaurant

Forsythia*

233 Chestnut St
215.701.4883
forsythiaphilly.com
@forsythia_philly

French Toast Bites*

Inside Cherry Street Pier
121 N. Columbus Blvd
lokalartisanfoods.com
@LokalArtisanFoods

Home Cuban Café*

17 N. 3rd Street
239.404.8038
homecubancafe.com
@home.cuban.cafe

High Street Philly

101 S 9th Street
215.625.0988
highstreetonmarket.com
@highstreethoagies

Khyber Pass Pub*

56 S. 2nd Street
215.238.5888
khyberpasspub.com
@khyberpasspub

Las Bugambilias*

15 S 3rd Street
267.239.5673
lasbugambiliashilly.com
@lasbugambiliashilly

The Olde Bar

125 Walnut Street
215.253.3777
theoldebar.com
@theoldebarphl

The Plough

and the Stars*

123 Chestnut Street
215.238.0499
ploughstars.com
@theploughphilly

Positano Coast

by Aldo Lamberti*

212 Walnut Street 2nd Floor
215.238.0499
positanocoast.net
@positanocoastphilly

Race Street Cafe*

208 Race Street
215.627.6181
racestreetcafe.net
@racestreetcafe

Royal Boucherie*

52 S 2nd Street
267.606.6313
royalboucherie.com
@royalboucherie



Restaurants with * offer a special promotion to Arden patrons. Please ask your server for details/scan the QR code for more details.

For complete restaurant descriptions visit: ardentheatre.org/dining

NEW SEATS FOR THE NEXT GENERATION...

We're immensely grateful for the generosity shown by our community to support the installation of our beautiful new seats and riser platforms in the F. Otto Haas Stage!

The plaques you see on the armrests to your left and right represent the love our community shares for one another and for the Arden. Each donation helps to sustain our beautiful theatre, support our mission of telling great stories by great storytellers, and keep the performing arts accessible to all.

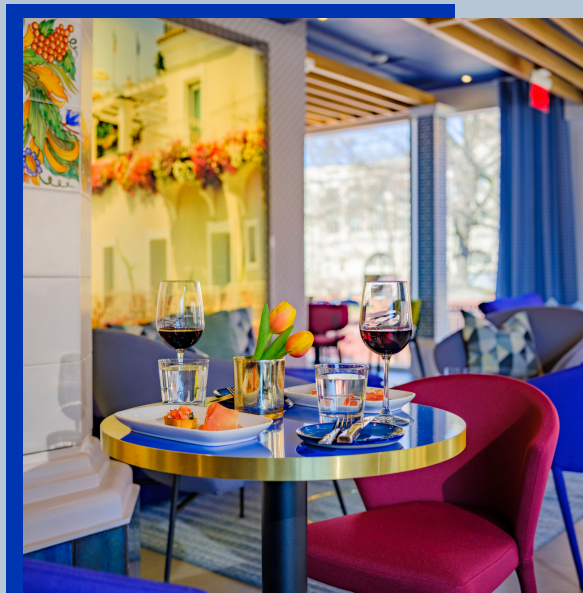
**Have you already named a seat?
Scan the QR code to view a list of our
generous seat donors and find where
your seat is currently located!**



There are still seats available to name in honor of friends and family, cherish the memory of your loved ones, or add your own name to leave a lasting impression and make an even greater impact. **Name your seat today and become a permanent installation at the Arden!** Visit ardentheatre.org/best-seat to learn more.

POSITANO COAST

ENJOY DINNER IN THE HEART OF OLD CITY
BEFORE OR AFTER YOUR SHOW AT THE ARDEN!

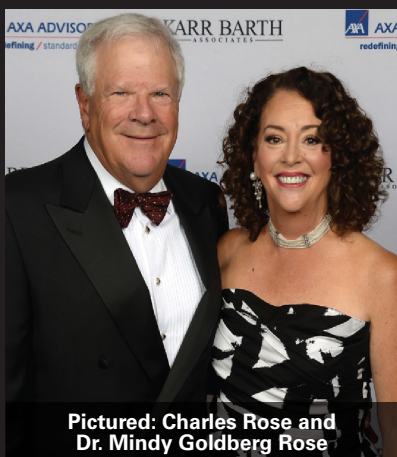


Positano
Coast
BY ALDO
L. LAMBERTI
RESTAURANT, CIGIO & WINE BAR

212 Walnut St, 2nd Floor, Philadelphia
215-238-0499 | positano.coast.net

*All patrons of The Arden will receive a 10% off discount by dining before or after the show.

Intern at the Arden!



Pictured: Charles Rose and
Dr. Mindy Goldberg Rose

The Goldberg Rose Internships offer students and emerging theatre professionals the opportunity to be mentored in their area of interest within arts administration. Dean Bruce, Communications Intern this past fall, said that they enjoyed ***“the amazing working environment. Everyone is so passionate about the space and it makes you excited to come in every day because you fall in love with it too.”***

Internship placements are appointed throughout the company based on interns professional interests and programming needs. To learn more about this opportunity or apply go to: ardentheatre.org/internship.

The Dr. Mindy Goldberg Rose Internship Fund is made possible thanks to the generous leadership support of Charlie Rose, in honor of Dr. Mindy's commitment to education, the arts, and making lives better.

Inspired by Mindy's commitment to the future of theatre?
Add your support by donating today:



ardentheatre.org/drmindy

Corporate, Foundation & Government Support

\$100,000 & above

Hamilton Family Charitable Trust
Rosenthal Family Foundation
Shubert Foundation
William Penn Foundation
Wyncote Foundation

\$50,000 to \$99,999

Harmelin Media
Independence Foundation
PA Department of Community and
Economic Development

\$25,000 to \$49,999

Anne M. and Philip H. Glatfelter III
Family Foundation
Comcast Corporation
The Horace W. Goldsmith Foundation
PECO Energy

\$10,000 to \$24,999

Anton Charitable Trust,
In Memory of
Frederick W. Anton III
Arcadia Foundation
Fox Chase Bank Charitable Fund
Lincoln Financial Foundation
National Endowment for the Arts
Penguin Young Readers+
Philadelphia Cultural Fund
PNC Charitable Trust —
Robert H. Reakirt Foundation
TD Charitable Foundation
Truist
The Suzanne Roberts Cultural
Development Fund
The Sylvia W. and
Randle M. Kauders Foundation
Univest Financial
Zeldin Family Foundation

\$5,000 to \$9,999

Civic Foundation
The Haley Foundation
Janet Yaseen Foundation
Pennsylvania Council on the Arts

\$2,500 to \$4,999

Bendita Foundation
Charlotte Cushman Foundation
Christian R. and Mary F. Lindback
Foundation
Cuba Libre+
Elliott-Lewis Corporation
Ethel Sergeant Clark Smith
Memorial Fund
Franklin Fountain+

Las Bugambili+
The Lida Foundation
The Paul E. Kelly Foundation
Philadelphia Activities Fund
The Plough and the Stars+
Republic Bank
TCF- The Community's Foundation
Virginia Brown Martin Fund of
the Philadelphia Foundation

\$1,000 to \$2,499

Alex J. Ettl Foundation
Barnes & Noble+
Birchtree Catering+
Cafe Tolia+
Dolfinger-McMahon Foundation
Franklyn Rodgers Family Fund of
the Philadelphia Foundation
French Toast Bites+
Forsythia+
Fulton Bank
Global Atlantic Financial Group
Hamilton Family Foundation
Hassel Foundation
Home Cuban Cafe+
National Mechanics+
Philadelphia Insurance Companies
The Rittenhouse Foundation
Sun East Foundation

Up to \$1,000

1812 Productions+
Art in the Age+
ASAP After School Activities
Partnership
Chubb
City Fitness+
High Street Philadelphia+
Philadelphia Theatre Company+
The Mann Center for the
Performing Arts+
Quaker Printing+
The R. Andrew Swinney Presidential
Achievement Fund of the
Philadelphia Foundation
The Wilma Theater+
Walnut Street Theatre+
Wide Eyed Studios+

Employee Giving, Matching Gift, Donor Advised Fund Partners

Amazon Smile
American Endowment Foundation
American Online Giving Foundation
Ameriprise Financial, Inc.
Bank of America

The Benevity Community
Impact Fund
Bristol Myers Squibb
Cadence Design Systems, Inc.
Caterpillar Foundation
Charities Aid Foundation
of America
The Chicago
Community Foundation
Chubb
CIGNA Corporation
Community Foundation of
New Jersey
Cristo Rey
Equitable / AXA Foundation
Exelon Corporation
Fidelity Charitable
Give Lively Foundation
Global Atlantic Charitable
Gift Fund
Goldman Sachs
Google
Impact Assets
Independence Foundation
Jewish Communal Fund
Johnson & Johnson
JP Morgan Chase & Company
Macy's/ Bloomingdale's
Morgan Stanley
Merck Foundation
National Philanthropic Trust
Network for Good
PayPal Giving Fund
PECO
Penn's Way
The Philadelphia Foundation
Renaissance Charitable Foundation
Saint-Gobain Corporation
Foundation
Sap America, Inc.
Schwab Charitable
Susquehanna International
Group, LLP
T. Rowe Price
United Way
Vanguard Charitable
US Charitable Gift Fund
William Penn Foundation

+ Denotes a gift of goods or services
This list represents gifts made
through February 5, 2024



The Sylvan Society

Arden Theatre Company

Grounding the Present, Nurturing the Future

The Sylvan Society recognizes individuals who support the Arden's work by making annual gifts of \$1,000 or more.

The special generosity of our members enables the Arden to tell great stories by having the resources to achieve the highest level of artistic quality.

This list represents gifts made through February 5, 2024

Chestnut Grove (\$25,000 and above)

Lois G. Brodsky
The CHG Charitable Trust
Nancy and Bob Elfant
Michael Grove
Alta and N. Peter Hamilton
Joanne and Jon Harmelin
Monica and Philip Rosenthal
Lee and Chris van de Velde
June and Steve Wolfson

Sassafras Grove (\$10,000 - \$24,999)

John R. Alchin and Hal Marryatt
Christina and David Fryman[^]
Elizabeth Gemmill
Terry and Ann Marie Horner
Robert and Risa Lavizzo-Mourey[^]
Peggy Morgan and Patty Bowman
Charles Rose
Harvey B. Swedloff

Cherry Grove (\$5,000 - \$9,999)

Anonymous
Richard and Kathleen Aregood
Rayenne Chen
Anne Cook and Russ Troyer
Ann E. Diebold
Deb Dorsey and Mike Green
Elisabeth Erlbaum
Stephen Falchek and John Offidani III
Richard Harris
Eileen Heisman and Marty Tuzman
Jim and Carolyn Hessinger
Robin and Saifuddin Mama
Alexis and Ed Pappas
Tom Petro and Kris Messner

Ceth and Sam Plum
Rosalyn K. Robinson and
Warren B. English
Bernard and Camille Rosenberg
Sid and Ruth Rosenblatt
Sharon and Irv Shapiro
Rosalyn and Stephen Weinstein
Nancy Brent Wingo

Filbert Grove (\$2,500-\$4,999)

Brett and Nan Altman
Charles Arnao and Rosemary Watt[^]
Bethany Asplundh
John and Amy Bitman
Bob and Cheryl Carfagno
John and Fern Culhane
Joy De Jesús and James Reynolds
Michael A. and Edward C. Donato
Laura Drake
Shannon and Ted Farmer
Elizabeth Fernández-Viña
Jill Fisch and John Gassenheimer
Linda and David Glickstein
Jen Harmelin
Edward Hillis
Peter* and Louise Kelly
Kenneth Klothen and
Eve Biskind Klothen
William A. Loeb
Janice Madden
Michael Mallee
Barb and Don Matheson
Amy Murphy and Terry Nolen
Dr. Joel and Mrs. Bobbie Porter
John and Claire Rodgers
Marilyn and Hank Royfe
Kathleen Sernak
Hether and Don Smith
Keith and Jim* Straw

Stephen and Kathy Thompson
Hope Yursa

Mulberry Grove (\$1,000-\$2,499)

Anonymous (3)
Hank Adamczyk and Iris Melendez
Becky and John Adams
Diane Alessi
Stan and Lisa Altman
Patty and Joe Amato
Winifred Anderson and Eric Lien
Stephen S. Arms and Jennifer J. Arms
Jim and Janet Averill
Rhonda Ball
Sheryl and Allen Bar
Sheila Bell
Jay and Nancy Berkowitz
Linda and Mark Bernstein
Sandy and David Beswick
Ian and Ryane Beutler
Dr. Regina Blaszczyk and Lee O'Neill
Louis Bluver
Viola W. Bostic
DeDe and Tony Brown
Ann and David Brownlee
Vicki and Russ Carlson
Karl Carter
Christopher and Jeffrey Carver
Cordelia Clement
Barbara Cobb
Marc and Margie Cohen
Kelly Colarelli
The Susan Lavine
Coleman Charitable Fund
Gregory L. Coleman
Rebecca Davis and Mark Hoffman
Ellen Deacon
Robert M. Dever
Tobey and Mark Dichter

Samuel Duplessis and
Daniel Krewson
Carol Eicher
Paul and Judy Farber
Mr. and Mrs. Farenback-Brateman
Donna and Norman Faye
Jeanne B. Fisher and Robert F. Lang
Carole M. Foley
Dieter and Sara W. Forster
Ellen and Tim Foster
Sandi Foxx-Jones
Lou and Rhoda Fryman
Julie and Tom Gennaro
Terry Graboyes
Kate Groark-Shields
The H and R Feinberg Family
Foundation
David C. and MaryJane Hackney
Ann and Glenn Haig
Anne Halkedis^
Ellen and Steve Harris
Hon. Lillian Harris Ransom
Dr. Valerie Harrison
Don and Lynn Haskin
Janis Hawes and Patrick Cunningham
Charles W. Head Jr. and
John A. Faggotti
Steve* and Jane Heumann
Karen and Mark Hite
Deborah Hluchan
Phyllis Hochberg and Stuartz Katz
Jill Hyman Kaplan and Elliot Kaplan
Rachelle and Ron Kaiserman
Margie and Scott Kasner
Holly Kinser

Carol Kelley
Steven Klein
Peter J. and Sandra Klugman
Steven Knepper
B. Koller
Valerie Koscelnik
Marilyn and David Kraut, In Honor
Of Amy Murphy and Terry Nolen
Deborah R. Kravetz and Bill Robling
Cyana La Divertida
Michael MacFarland
Richard Maimon and Susan Segal
Lee Marks and Lisl Zach
Linda McAleer
John and Amy McCawley^
Kathy McMaster
Peter and Laura McQuaid, In Honor
of the amazing Arden Theatre Team
A.C. Missias
Chloe Mohr
Leslie and Michael Molder
Adam Mussell and Kate Whittington
Marge Neff and Dan Winterstein
Arnold and Shelly New
Mary Ivy and Roger Noone
Michael Norris and Matt Varrato
Susan Odessey
Barbara Oldenhoff
Don and Barbara Parman
Ronald and Pam Pontano
Maya Ponte and Benji Eichberg
Laura and Douglas Pratt
David Pressel and Jill Feldman
Daniel Promislo
Alan Reinach and Dana Perlman

Alice Reyes
Joy Rickabaugh
Franklyn and Cintra Rodgers
Jane A. Rose, CPA/PFS
Mike Salmanson and Tobi Zemsky
Gisèle Sambar Bathish
Becky Sassi
Geoff Schmidt and Marie Wong
Kim and Ross Schmucki
Ellen Schwartz and Jeremy Siegel
Genvieve and Clete Shields
Roy and Lee Shubert
Laura and Ron Siena
Paulette Singleton
Gayle and David Smith
Kathy and Don Smith
The Spector Charitable Trust
Rudy Sprinkle and Andrea Barsevick
Mike and Shannon Stellato
Robert and Sydney Stevens
William K. Stewart, Sr. Foundation
April J. Tvarok, In Honor of Class 9
Thomas and Dawn Weiss^
Caitlin Wood and Martha Schoolman
Richard and Diane Woosnam
Ellen Yin+

** Denotes a deceased supporter
+ Denotes a gift of goods or services
^ Includes a matching gift
This list represents gifts made through
February 5, 2024*

THE LEGACY SOCIETY

Arden Theatre Company would like to recognize the following supporters who have included the Arden in their wills or estate plans. Their planned gift provides support which will help sustain the Arden's work for decades to come.

Anonymous
Ms. Peggy Anderson*
Stanley Baurys*
Ivy Bayard*
Jane Berryman
Louis Bluver
Mary P. Burr
Pearl M. Carpel*
Larry S. Friedman* and
Dean H. Rishel

Ellis Ginsberg*
Peter Gistelinc and Kim Bloom
Grace Goglewski and
Eric Schoefer
Gary R. Grob*
David C. and Mary Jane Hackney
Jim and Carolyn Hessinger
Suzanne and James Hill
Alan and Nancy Hirsig*
Mary Ellen Kroker

William Loeb
Donald Martin and Richard Repetto*
Peggy Morgan
Tom Petro and Kris Messner
Kristen Phillips and Matt Schreck
Renee E. Polsky*
Madeline Portnoy
Irene M. Reiter*
Dr. Harry Rosenthal
Marilyn and Dean Staats

We hope you will consider including the Arden in your will or estate plans. To be recognized as a member of the Legacy Society or with questions regarding planned giving, please contact Jessica Abel, Director of Development, at 215.922.8900 x149.

Become a MONTHLY DONOR

to help sustain our daily work throughout the year!

This consistent support provides core financial stability to help keep the lights on, employ local theatre professionals, and reach even more students throughout the Greater Philadelphia area.

Becoming a monthly donor is the easiest way to increase your impact! Simply tell us how much you would like to donate monthly in the link below and we'll take care of the rest. A recurring donation of any amount helps:



ardenttheatre.org/donate

If you'd like to speak to a staff member about becoming a monthly donor, please call our Development Department at 215.922.8900 x146 or email devo@ardenttheatre.org.

**\$10
a month**

keeps the lights on during a full day of performances.

\$25

a month covers full tuition for 6 students to attend a Play in a Day session of Arden Drama School.

Join our
Sylvan Society!

\$100

a month gets you closer to our mission while deepening the role you play in making our work possible.

*Monthly gifts are charged automatically.



Thank You to Our Supporters

\$500-\$999

Anonymous
Jerry Abelson and June Idzal
Sally and Michael Bailin
Beth Burrell and David Sorensen
Karen Cheney
John Crawford and David Penyak
Catharine Dolan and
Richard Bierregaard
Jonathan V. Edmondson^
Epstein Family Charitable Trust
John Erickson and Harry Zaleznik
Lisa Fair
Katherine Fandetti
Paula Fuchsberg
Janet-Lynn Garrabrant
Joseph and Jane Goldblum
Tanya Gordon
Ben and Jody Graff
E. Graham and Elizabeth Robb,
In Honor of Lee van de Velde
Marjorie Grebow
Paul D. Green
Rhoda Harrison
Heidi Hertfelder^
James Hinrichs
Diane Hlywiak, Esquire
Diane and Dorothy Hofer
Glenn Holsten
Jane Kamp and Thomas Lloyd
Barbara and Jerry Kaplan
John and Holly Kleimo
Catherine Klinger Klutcher
Sarah Kloss
Jane S. Kramer
Mary Ellen Krober
Ruth and Peter Laibson
David Lerman and
Shelley Wallock
Mr. Robert Leventhal
and Ms. Cheryl Getty
John and Martha Lubell
Mary Ellen Marzullo
Michael McArdle
Barbara McCleary
Brendan May and
Mary Kate McGrath-May
Susan and Alan Miller
Joann Mitchell
Sandra S. Mock
Jackie Morrill and Mike Donahue
Shellie Peters
Jessica Phelan
Claire and Lud Pisapia
Janet and John Poth
Paul Rabe and Cheryl Gunter
Susan and Steve Reisbord
Rachel R. Reynolds
Timothy Riddle

Robin Rifkin and
Michael Silverman
Daniel and Faye Ross,
The Ross Family Foundation
Dan Rothermel and
Michael Hairston
Mauricio Saavedra and
Joanna Sykes-Saavedra
Terri Schwomeyer
Joseph Shaffer^
Valerie Smith
Stanton and SaraKay Smullens
Kathleen A. Stephenson
Barbara and Robert Stewart
Mary Thomas
Lewis and Hella Volgenau

\$250-\$499

Anonymous
Carol and Bennett Aaron
Kim and David Adler
Anthony Agati
John Allerhilgen
Zachary Altman
Janet Alwang
Marilyn and John Anthony
Bree Archambault
Sandra Axelrod
Cynthia and Geroge Barth
Wilma Bass
Ellen Baxter and Robert Kavash
Richard and Eileen Bazelon
Carol Beam
Patricia G. Beck
Joan and Richard Behr
Pat and Tom Bender
Gretchen Bender
Sara and Bruce Berger
Timothy Berger and
Sarah Mooers
Ruth Berman
William Bertrand
Charlotte H. Biddle
Fern and Bob Billet
Barbara Bisgaier
Linda and Alden Blyth
Carol and Allen Bonner
Ed Boyd and Ken Tasker
Dr. Stephen Bulova and
Eleanor W. Bulova
Sabra Cameron
Chip Capelli,
In Honor of Amy Murphy
Margaret Cavanaugh
Elizabeth Cerkez and
Alec Schoenfeld
Arlene Cessna
Leah Chaplin and Eileen Gildea
Edward Chiginsky

Diane and Patrick Close
Deborah Co
Mark Cohen and Marty Johnson
Mary Coleman
Lynn Collins
Janet and Richard Conn
Susan Cook and Jeff Staikoff
Carol Cook
Mary Jo Courey
Jill, Hank and Katie Croft
Paul Danifo
Robert and Bonnie DeAngelo
Nancy DeLucia
Marla and Andrew Diamond
William Diebold and
Deborah Freedberg
Robert Dinardo
Angela D'Orsi and Dean Beer
Donald and Geraldine Duclow
Robert Earle^
Anne Ewers
William and Anne* Ewing
Norma A. Fabian
Antionette Farrar Seymour
Cheryl and Steven Feil
Mark and Rene Feitelson
Victoria Ferguson
Jay Finestone and
Randy Jill Schwartz
John and Nancy Fischer
Jacqueline Foldesy
Kimberly Foster^
Paul Friedman
Bernadette Gallagher
Dan Gannon
JJ Garcia and Charlie Dreisbach^
Jesus Garcia
Joel R. Gardner and
Holly A. Phelps
George and Dona Garrettson
Janet Ginzberg and John Caskey
Rena and Henry Goehl
William and Ilse Goldfarb
Jay Goldstein
Joyce Goodman
Eileen and Normal Gray
Rita Greenfield
Trudy and Paull Gutterman
Marlane and Harvey Guttmann
Larry Haefner
Henry and Joyce Halpern
Dr. and Mrs. James Haney
Caroline Harries
Carol Hauptfuhrer
Susan Havens-Lang
Nancy Haverstock
Chris and Karen Hennes
Dan and Monica Hiferty
Terry Hirshorn

Thank You to Our Supporters

Leonard and Audrey Hoffman
Mary and Howard Hurtig
Michael J. Hozik
and Margaret L. Rea
Jim Hutchison
Dave F. Huting
Jennifer Jenkins
DL Kacer
Philip and Marge Kalodner
Phyllis Kauffman
Douglas and Ruth Keating
Susan Kellogg and Dick Hoffman
Michael and Marie Kenis
Kate Kidder
Stephen Kieran
Megan Kiesel
Paul R. Kleschick III
David Knowlton and
Diane Zompa
Eden Kratchman,
In Honor of Richard Maimon
Andrew and Lynn Lees
Drs. Bob and Joyce Leonetti
Anna Levinger and
Bree Lowdermilk

Edward Lundy and Debra Reiff
Cirel and Howard Magen
Kathleen Mahan
Ruth Mandelbaum
Murray Margolit
Kevin and Megan Maynard
Vicki Meitus
Eric Moss
Kate Nelson+
Mr. Joe Norton
Joanna Nunan
Paul Nutaitis and Robert Clark
Deb Olley and Brian T. Murphy,
In Honor of Deb Dorsey
and Mike Green
Tim O'Malley
Fred Ott
Robert Ourach
Kimberly C. Oxholm and
Carl Oxholm III
Mr. Larry Pace
Michael and Judy Paul
David and Amy Pollack
Sandy Portnoy
Ilene and Coleman Poses

Nick and Peg Potalivo
Kurt and Mary-Ann Reiss
Mr. and Mrs. William H. Rivers, Jr.
Claire Rocco
Robert L. Roessler
Maxine Romano
Shelley Rosenberg
Anthony Rostain
Adelle Rubin
Suzanne and Kip Salus
Marilyn Sanborne and
Richard J. Labowskie
Rita Schaer
Perlita and Frank Schorfheide
Bonnie Schorske
Jackie Schroder
Lauren and Daniel Schwartz
Lawrence and Carol Segal,
In Honor of Richard
Polly Shaffer
Dan and Hanna Shapira
Karen and Robert Sharrar
Elaine Sherman
Diane Silverhardt
Robert Snyder

Become an Arden Sponsor!

By becoming an Arden sponsor, you can connect with 100,000 Arden patrons annually, make a difference in your community, and meet your marketing, philanthropic, and civic goals!

Sponsorship opportunities are available throughout the year for our Mainstage productions, Arden Children's Theatre, Education & Community programs, and Gala. Sponsors receive a range of **brand visibility and entertainment benefits.**

Featured partner benefits include:

- Ad placement and promotion in our programs
- Logo placement and sponsor recognition throughout our lobby
- Inclusion in email communications to our patrons
- Custom social media posts
- Client or staff engagement opportunities
- Additional, custom benefits tailored to your organization's needs



Sponsorship opportunities are available with a cash donation or in-kind trade value of \$1,000 or more annually. To learn more about our Arden Sponsor program, please contact Matthew Reddin, Manager of Institutional Giving, at mreddin@ardentheatre.org or 215.922.8900 x126.

Thank You to Our Supporters

Amanda Spann^
Christina Stasiuk^
Emily Steiner
Elsie Stern and Steve Cohen
Susan and Jim Strohman
Dr. Dolores Szymanski
Matthew Tom
Margaret Evans Tuten
Bryan Ulishney^
Bruce and Nancy Urbschat
Judith Voet
Mark Wade
Donna and Andrew Wechsler
Marlene Weinberg
Vivian Weinblatt
Abigail Wolf and Jonathan Weiss
Judith L. Wellington
Caroline West
Doris A. Williams
Susan Williams
Mark Williams
Jim and Jean Wilson
Linda Wood
Sue and Eric Woolf
Josh Young
Heidi and Mark Zod, and Family

\$125-\$249

Anonymous (6)
Judy Aaron
Rhoda Abrams
Thomas Achenback
Eleanor Adam
William and Patricia Alber
Estelle Alexander
Michael Allen
Helene Amster
Melba Axelrod
Camille Bacon-Smith
Esther Balkin
Pam and Earl Ball
Theresa Bambino
Charlene and Keith Bance
Judy Barbush
John Barr and Jennie Shefler
Sally and Morris Barron
Ronald Barras
Carolyn and George Bassett
Robert and Sandy Clay Bauer
Susan Becker and Aaron Rubin
Amy Brantz and Edward Bedrick
Sue Bentson
Claire and Joseph Berger
Donald and Sheryl Berger
Frank Bernard
Sandy Betner
Barry and Marilyn Bevacqua
Nathan Blum and Barbara Rolnick
Janice Bogen

We are proud to support

***Arden Theatre
Company***

HARMELINMEDIA

More than forty years of
transforming advertising.

More than forty years of
supporting the arts.

harmelin.com

F. William Bogle
Ernest Bollin
Gwen Borowsky
Nicholas Bosshardt
Miriam Bowerman
Michael P. Boyle
Pam and Steve Briggs
Lorena Broesamle
Barbara Bromfield
Eadie and Allan Brooks
Katherine Brown
Elise Bruhl
Joanne Burak
Tracy Callahan and Joe D'Agistino
Sarah Campbell
Michael Campo+
Chester Allen Carson
Vincent Cancro
and Donna Davenport
Debbie and Allen Casnoff
Avigail Caspi Lebovic
Lillian and William Cassel
Caroline M. Castagno

Margaret and Phillip Cavanaugh
Kamesh Challuri
George and Barbara Chalmers
Maureen Charnitski
Richard Cieslak
Barbara Citerone
Tawny Clark
Mary Cochetti
Gert Cohen
Lauren Coleman
Everod Coleman
Michael Coleman
Kristina Collins
Rosina Coltellaro
Janet Cook
Betty Cooper
Carol Copland
Donna Cordner and Brent Groce
Gladys Corrodi
Barbara Cortese
Joan Countryman
George Craig
Michael and Nancy Crawford

Thank You to Our Supporters

Alexander Curtin
Joseph and Helen D'Angelo
Todd and Christine Darr
Anne Davenport
Emily L. Davis
Thomas and Eileen Davis
Kelly and Steve DeAngelis
Francis de Regnaucourt
Emilia Demarco
Teri Dicesare
*George F. Koch, Jr. and
Santo A. DiDonato
Susan Dinan
Jeanne Doherty
John Doherty
Joseph and Virginia Dominic
Joanne Donahue
Stuart and Diana Donaldson
Colleen and John Donofrio
Shane Dreher+
George Dvorak
Anne Egan
Jeff and Michelle Eichen
Linda Ellsworth
Carole Epstein
Ted and JoAnn Erfer
Adelaide Ferguson
and Ron Cohen

George Feuer
Gene Fiducia
Judy Flander
Judy and Hal Fliegelman
Donald Foote
Kenneth Foster and Mary Jenkins
Nikki Fox
Mimi and Nick Fox
Allan P. Freedman
and Amy Rappaport
Elyce Freedman
Douglas Frenkel and
Marlene Weinstein
Tong-Ming Fu
Lynne Fuller
Brenda Furtak
Suzanne Gallagher
Miriam Galster
Susan Gasteyer
Greg Gephart
Scott and Lynda Glading
Joan D. Gmitter
Diane and Frederic Graboyes
Rick Greenstein
and Claudia Tesoro
Celeste Griffith
June Hament
Elizabeth Harman

Tahirah Harrigan
Virginia Hayes
Elizabeth Heller-Mesznik
Susan Herron
Wendy and Steve Hess
John and Marcia Hiehle
Thelma Hilibrand
Margaret Hill
Richard and Barbara Hirsh
Maryl and William Hitchings
Johnnie Hobbs
Alexa Hogarty
Robert Holland
Edward Hoy
Caren and Stuart Hosansky
Geraldyn Humphrey
Jill Huntley Taylor
Thomas Hurster and
Jacqueline Salmon
Meghan Ignatosky^
Dave Ingram
Timothy M. and Carol M. Johnson
Peter and Nora Hunt-Johnson
Maurice Johnson
Jeanette Johnson
Bruce Joss
Glenn Kalina
Karen Kaplan^



LAS BUGAMBILIAS

TRADITIONAL MEXICAN FOOD DESDE 2007

Thank You to Our Supporters

Anne Kasprinski
Steven Kavanaugh
Rosamond Kay
Sean Keegan-Landis
Colleen Keith
Brian Kennedy
Cindy Kesselman
Rachel Kipnes
Laura Kirby
Brian and Caren Kirschner
Charles Klaniecki
Susan Kleinman
Lora Kline
Gregory Koutnik
Vicki and Don Kramer
Richard G. Krassen
Louis Karuse
Ellen Kurtz
Barry and Janet Kushner
Roman and Melaku Lakew
Joyce Laskin
Medita Laville
William Lederer
Susan Lee
Alan and Susan Levin
Ely and Sarah Beth Levine
Rafael Levites
Arlene Liebman
Mary Lee and Bill Lieser
Lisa Linder
and Richard Grossman
Laurel and Robert Lipshutz
Brian Litt
Audrey Litto
Kathryn Loitz
Jacqueline Loli
Greg Lord
John and Melissa Lore
Diane and Michael Love
Howard R. and Jennifer Lurie
Whit MacLaughlin and
Catharine Slusar
Richard and Scotia MacRae
Theresa Mader and David Suter
Dan Maier
Miriam Mandell
Joseph M. Manko
Theodore Mann
Deb Martin
Suzanne Matlock
Ken and Margery Maurer
George and Judy McCarthy
William McCauley
Patricia McCole
Alice McCreary and David Epler
Gavin McCullion

Michelle McFarlane
Dagmar McGill
Louise McLeod
Becky McMahon
Lorraine and Bruce McMahon
Arthur and Sallie Melvin
Adrienne Mendell
Allyson Mercer
Mary and Robert Metrione
Cheryl and Gerald Meyer
Frances Miller
Sandra and Martin Miller
Michael Milone
Dale Mitchell
Mary Fran Moeller
Florence Momplaisir
Calibous Moskowitz
Mary Mullarkey
Theodore and Theresa Munz
Sandra Murray
Ken and Sue Myers
Ann Marie Nasuti
Marissa Neale
Heather Neff
Etta and Chuck Nissman
Frances Novack
William Norton
Grace O'Dowd
Nora O'Dowd
Patricia Ogiony
Mr. Gerald Orr
Jim Ortega
Linda Osler
Abbey Owens
James Pabarue
Alan and Bryna Paston
Teresa Peterson
Kristen Phillips and Matt Schreck
Benjamin Pierce
Deborah Pines and
Carl Perchonock
Michael and Lyndsay Pio
Martha Platt and Marlis Kraft
Lois and Paul Plotnick
Alma Plummer Marshall
Jeffrey and Elizabeth Podraza
Victoria Pratt
Antoinette Pressman
Ruth Prushan
Aneira Puttaswamy
Mark and Karen Reber
Stanley and Rita Reichlin
Mary Jo Reilly
Eleanor and Joseph Reinhardt
Judith Richter
Gary and Robin Risler

Marjorie Risman
Jerry and Nancy Roberts
Mrs. Deborah Robinson
Renee Rollin
Lou and Laura Romano
Tracy Romans
Carey Roseman
Richard and Anne Rosenberg
Hal and Sue Rosenthal
James Rush
William Russell
Suzanne Ryan
Joan Ryder and Robert Ludwig
E. Ruth Sachs
Joan and William Saidel
Sandra Sborofsky
Barbara Schaffer
Karen Schermerhorn and
Evan Seymour
Lucille Schlack Drake
Les Schlessinger
Marvel Shmiefsky
Mary Ellen Schneider and
Carl W. Schneider
Jill and Kerry Schuman
Mark and Nancy Schure
Elena Selina
Irving Shapiro
Iris Shifftan
Jim and Cathy Shippen
Mel and Susanne Shuster
Paul Siegel
Robert and Harriet Singer
Rebecca Sinkler
Helen Smeltzer
Harriet Smith
George R. Smith
Patrick Sorrells
Rudy Spraycar
Marilyn and Dean Staats
Megan Staples,
In Honor of Amy Murphy
Konnie Stark
Margaret Stein
Julie Stern
Steven Stern
Sarah Stitzer
Gaynor Strickler,
In Honor of Anne Cook
Elan Strominger
Daniel Szyld and Kathleen Ross
Linda R. Tabas
Sylvia and Frank Tarzanin
Maxwell Thoeni
William Thomas
William Thompson

To join the *Sylvan Society* or for more information on how you can support the Arden, please contact
Orelí Uzdavinis, Manager of Individual Giving, at 215.922.8900 x131 or ouzdavinis@ardentheatre.org

Thank You to Our Supporters

Gina Tomkowich
Elizabeth Townsend
Marian Tracey
Linda Traver
Jane Trentacoste
Richard Urbani
John Urofsky
Tom and Patricia Vernon
Alec Vidal
Lorine Vogt
Sandra Vondeling
Ian Wachstein
and Michele Zeldner
Ann Walker
Bo Wang
Tom and Beth Warms
Donna and Jay Warshaw
Barbara Wasserman
Ellen Wasserson
Melinda Watts
Linda Waxler
Shelly and Fred Weiner
Renee Weisband
Rashida Wellbeck
David Wierz
Bob and Ellen Willoughby
Anne Wittkamp
Leon and Phyllis Wolf
Hon Wong
Robert Woodcock
and Sally Leiderman
Jodie Yanno
Dina Zimbardi
Pamela Zitta

\$75-\$124

Anonymous (6)
Lawrence Abel
Eileen Abel
Carole Abercauph
Stuart M. Adair,
In Honor of Amy and Terry
George Ahern
Diane Ajl
Peter Allen
Barbara Amstutz
K. Anderson
Patricia A. Armitage
Rosalie August
Dr. Rita Axelrod
Nelson Bagby
Dr. Donald Bakove and
Margaret G. McLaughlin
John Baltrush and Pam Allen
M and M Baltrush
Cecily Banks
Theresa Baraldi
Rebecca Baranowski

William Barcklow
Joseph Bartman
Wallace and Denise Bateman
Fred Baurer
Oksana Baydina
Frances and Michael Baylson
Jim Becker
Megan Bellwoar and
Michael Hollinger
Michele Bennett
Livia Berardi
Mr. David Berch
Marcie and Robert Berke
Irene Berkowitz
Barbara Black
Estelle Blaustein
Amy Bleakley
Jocelyn Block
Joshua Bloom
Mr. and Mrs. Larry
and Joyce Bloom
Thomas Boghosian
Linda and Andy Borson
Iris Boshes
Marcia Bower
Amy Bowers
Hazel Bowers
Erin Boyle
Brian Boyle
Virginia Brabender
Stanton and Jill Braid
Karen Bramblett
Joseph and
Mary Lou Breidenstine
Terrence Brennan
Ted and Susan Broom
Robert Brophy
Doris Broudy
Patricia C. Brown
Elijah Brown
Joshua Browns
Ethelyn Brownstein
Cathy and John Bryck
Ms. Monika Burke
Peter and Miriam Burwasser
Dorothy E. Byrne
Francis and Mary Calter
Virginia* and Samuel Cameron
Anthony and Jaque Camp
Andrea Caniglia
Carolyn Cannuscio and
Daniel Rader
Stephen Capadona
Lise and Dick Carr
Kim Carson
Joseph Casey^
Anne Chain
Anna Lee and Andy McAleese

Stuart Charmé
Kathy Chase
Susan Chisholm
Emily Cieri
Ivor Clark
Karen Clark
Tom Clark
Kathy and Bob Cochrane
Helene Cohen
Howard Cohen
Judy Cohen
Beth Cohen
Jazquelyn Cohen
John Collett
Barbara Collier
Rick and Carol Collier
Jane Combrinck-Graham
Janet Connor Love
*Gerard and Cheryll Conway
Jeff Cooper
Sarah Cooper Searight
Elizabeth Cornman
Paula Cortes
Glenn Coughenour
B. Karen Coyne
Heather Crane
Sarah Crawford
Anna Coxe Toogood
Marie Cruz
Veronica Cuccinotta
John Dale
Ms. Dorothy Dalton
Cynthia D'Ambrosio
Barbara A. Daneluzzi
Cheryl Dannenbrent
Benjamin D'Annibal
Bill Davis and Lisa Handler
Gilbert Davis
Susan Davis
Ms. Elizabeth Deegan
Paul Deigendesch
Catherine Del Duca
Michelle Denburg
Kathleen Detreux
Rhoda Dickey
Judy Dinn
Gina DiPonziano
Catherine Dolan
David Donaldson
Rosanna Dorazio
Judith Drasin
Daniel Drexler
Robert and Renee Dubin
Barrie duBois
Carol Dudnick
John Dulik and Sandra Folzer
Marian Duncombe
Lois S. Durso

Thank You to Our Supporters

Natalie and James Dyen
Joyce Dzekciorius
Richard Egan
Larry Eichel
Sally and Stewart Eisenberg
Susan Ellenberg
Jason and Jennifer
Ellsworth-Aults^
Dr. Beverly Emanuel
Linda Emerick
Jack Ende
Wendy Epstein
Edmund and Judy Erde
Karen Ernst
Alan Ettenson
Dorothy Evensen
Mike Falcone
Daniel Farah
Anne and Steven Fassler
Lona Farr and David Voellinger
Nancy Featherstone
Cari Feiler Bender and
Rodd Bender
Leila Finkelstein
Joan and Aron Fisher
Pamela Fisk
C.J. Fitts
Mr. Raymond Ford
Tamara Forstater
Kathleen A. Foster
Abbe Fox
John and Elaine Frank
Alexandra Frank
Judy Frank
Diane Frankel
Susan and Paul Frederic
Barbara Freed and
Alan Mittelman
Fran Freedman and Job Blum
Paulette Freeman
Brenda Freitag and Chet Tuthill
Martha Friedman
Philip Friedman
Marie Fritzinger
Carol Fuoco
Abraham Gafni
Malika Gandhi
Ofelia Garcia
The Gifford Family
Lisa Gates
Iris Gaughan
Jenna Gavaletz
Charles Gear and
Anna Lee Morgan
Gwen and Alvin Gilens
Marylouise Gladish
Philip and Karen Glick
Marion Goldberg and Paul Keller

Brian Goldsmith
Heather Golin
Bob and Jan Goren
Marylyn Goutmann
Phillip Graneto
Joshua Grant
Donna Grasson
Cheryl Green
Mark Greenberg
Alan and Sara-Ellen Greenberg
Joan Greenfield
Sheila L. Greer
Kaitlin Gregory
Adam Gress
Stephen Griffey and
Melinda McGough
Frances Grubb
Dan Gutierrez
David and Myra Gutin
Mr. Mark Haas
Emma Halpert
Teresa Hanssens
Jessica Harms
Shelley Harris
Barbara Harris
Carol Harrison
Palmer and Judith Hartl
Richard Willis and Linda Hartnett
Libby Harwitz and
Burton Blender
Gail Hauptfuhrer
Kenneth Heiings
Patrice Heller
Stuart Henderson
Angela and Michael Hennessey
Don Henry
Abe Henry
Trudi and Irv Herman
Kirsten Hickerson
Barbara Hilgen
Mershon Hinkel
Mrs Elizabeth Hollinger
Hollie and James Holt
Dr. David O. and Patricia Holtz
Marie Horchler
Esther and Robert Hornik
Chris Hoyler and Bob Jackson
Kevin Hunt
Ellen Huyett
Greg Jaffe
Rebecca Jarosh
Stacey Jarrell
Rosemary and Ejner Jensen
Leah Johnson and Damien
Suqarrell
Daniel Johnson
Phyllis Jones
Warren Joseph

Edward Kahn
Lisa Kahn
James Kaib
Barbara and Leslie Kaplan
Patricia Kapur
Dr. Rhonda Karp
Judy Kastenbergl
Lucy Kaufman and
Matt Lockwood
Joyce Kay
Kara Keenan Sweeney
Chris and Bridget Kelleher^
Frances and Paul Kende
Megan Kennard
Toni and Herbert Kestenbaum
Robert and Susan Kettell
Julia Kharlip and Oleg Teytelboym,
In Honor of Every Brilliant
Thing Production
Charles King
Janice King
Cheryl and John Kirby
Jay and Bebe Kivitz
David Klein
Marlena Kleit
Veronica and Gary Klocek
Jerry and Deena Koffler
Theodore and Amy Kokas
Ellen Kopeland
Joe and Doreen Kordorsky
Richard Kordorsky
Judith Kornfeld
Christine Kozsuch
Nassya Kravevska-Owens
Shira Kramer
Dr. Hillary Kruger
Denise A. Kuhn
Will Kumpas
Christopher Kurtz
Daniel Lai
Debby Lamanna
Lois Landis
John Landreau and
Sherri Grasmuck
Joan Lapayowker
Melanie LaPenta
Sigrid Larson
Gretchen Lea
Alexandria Leitao
Maria Lerman
Howard and Susan Levinson
Cara Levinson
Michael L. Levitan
Bella Lewensohn Schafer
Joanne Lewis
Mr. Darryl L'Heureux
Patricia Lima
Barbara Lincow

Thank You to Our Supporters

Daniel and Kathleen Lipinski
Linda Litwin
Melissa Lukach
Nancy and Jerry Lutin
Robert and Patricia Lynam
Colleen W. Marano
Bob and Sue Ann* Marburg
Terry Ann Marek
Randi Marrazzo
Barbara Marshall,
In Honor of Barbara Marshall
Linda Martin
Nancy Martin
Terry and Lyle Martin-Murley
Ned and Joan McCarthy^
Chris McDowell
Judith McDowell
Vicki McGarvey
Margaret E. McGovern
Kathleen McGrann
Brian McGraw
Kim McKnew
Donette McPoyle
Andrea D. Meals
Meryle Melnicoff
Fran Metzman
F. Michel
Faith and John Midwood
Emily Mikesell
Linda Mill
Megan Millenky
Joyce and Mark Miller
Danny Miller
Barbara Miller
Marianne T. Miller
Lina Minicucci
Ann Mintz and
Clifford Wagner
Laurent Moe
Jen Molod
Melinda Montanaro
Brad Moss and Laurie Gottlieb,
In Honor of Harvey Swedloff
Judith Nagle
Linda Naskret
Mara Natkins
Pamela Nelson
Claiborne Newlin
Helen Newbold
Marta Nolan-Alley
Pat Nolan
Daniel and Jeannette Norris
Gregory and Linda Nosal
Janet and Dennis Novack
Alan Oberman
Judith O'Dell
Jenna Olszak
Jeanne Omans
Mr. and Mrs. Gerald O'Neill

Hugh O'Neill
Nicole and James Onesti
Shawn Orr
Julie and Eric Orts
Stanton S. Oswald and
Phyllis Weber
Douglas L. Overtoom
Sharon Pacek
Michael Palazzo
Blair Pallas
Brian Parker
Emelie Passow
Anne and Ted Patterson
Jane G. Pepper
Kristen Perlman
Marthenia Perrin
Belinda Peterson
Anna Phillips
Jerrold Pierce and Linda Fletcher
Lucille Pilling
Jaye Pinch
Ronnie Pleet
John and Victoria Podolski
Regina Poletti
Amy Polis
Steven Portman
Timothy and Joyce Ratner
Paul and Ellen Rawicz
Kathleen Regan
Krista Reichard
Ms. Mary Reinhart
Michael Riccardi
Kenneth Richman
Dana Ridley
Jacqueline Riedel
Ann Riggan
Fran Rissmiller
Marjorie Robbins
Eve and Charles Robbins
Cathy Robinson
Robert Robinson
Barbara and Anthony Rooklin
Maxine Rosen
Martin and Carol Rosenblum
Dean Rosencranz
Alexis Rosenfeld
Ellyn Rosenfeld
Libby Rosof and
Murray Dubin
Diane Rossheim
Nina Rossi
Linda Rouse
Edward and
Elizabeth Rubenstone
Kathryn Ruch and Alan Folsom
Bernard and Barbara Ruekgauer
Desiree Salera
Robin Sampson
Katherine Sanderson

Alan Sandman
Vicki Sarnoff
Vicki Satinsky
Matteo Scammell
Carole Schaefer and
Richard Charney
Karyn L. Scher
Jordan Schilling
Ken Schmitt and
John McCormick
Linda Schneider
Patty Schoelkopf
Evelyn Schwartz
Jennifer Schwartz^
Robert Schwartz
Gail Scott and
Thomas D. Quinlan
Patricia Scott Hobbs
Hideko Secrest
Henry Seigel
Deniz Selman
Karen and Bob Serenbetz
Barbara Shapiro
David W. Sharp
Wendy and Matthew Shilling
William Shoff
Laura Shook
Carol and Allen Short
Hedvah Shuchman
Marilyn Sifford and
Robert Butera
Donald and Marilyn Silberberg
Caroline Simon
Judith Skillings
Carleene and David Slowik
Dennis Raymond Smeal
Ariana Smith
Bruce and Penny Smith
Colleen Smith
Joseph Smith
Kathleen Smith
Georgia A. Smyth
Wayne Snover and Janet Tebbel
The Snyder Family
Emily Soloby
Vicki and Evan Solot
David and Liza Spaventa
Pamela Spiller
Gary E. Stahl and
Deborah S. Stahl
Joanna Stamper
Dionne Stanfield
Ms. Naomi Starobin
Michael Steele
Paul Steinberg
Steve and Judy Stern
Joel and Barbara Stewart
Louise and David Strawbridge
Fred Stuart

ARDEN SUMMER CAMP

For Kids and Teens

Action packed and taught by
theatre professionals!

Learn more and register online at ardentheatre.org



Thank You to Our Supporters

Kathleen Sullivan
Elizabeth Svenson
Gary and Betty Szatkowski
Cheryl Taddei
John Tarves
Elizabeth Taylor
Sandra Telep
Hannah Thomas
Thomas Thompson
Cinnamon Tinsley
The Tobias Family
Charles Todd
Elizabeth Torres
Richard Trama
Paul Traviline
William Travis
Joan and Tom Tropp
Janize Ulzheimer
Carol Usonis
Carol R. Vahlstrom
Heather Van Horn
Cynthia L. Vena
Larry Viesel
Deborah Volkmer
Jonathan Waller
Tom Wand
Elizabeth Warner
Jacqueline Weber
Harri Weinberg
Taube and Sam Weinberg

Shelly and Fred Weiner
Margo Weishar
Carol Weisl
Kate Weiss
Lenore Weissberg
Sharon Wellons
Liz Welsh
Shannon Welsh
Suzanne L. Weston
Gary Whitley
Robert C. Wickline
Howard Wiener
Kendal Williams
Dora and Oscar Wilsker
Laura Windham
Linda Wingate
David Winikur
Angela and Michael Winterrowd
Marcia Witlin-Basickes
Arnold Wolf and Fern Tablin
Margaret Wyant
Sam and Kuna Yankell
Brian and Marion Young
Loretta Young
Chris Young
Marc and Pam Zisselman
Jennifer Zwetolitz

* Denotes a deceased supporter
+ Denotes a gift of goods or services
^ Includes a matching gift
This list represents gifts made through February 5, 2024

FORK

LUNCH BRUNCH & DINNER



306 MARKET ST PHILA | FORKRESTAURANT.COM

Thank You to Our Supporters

Gifts in Memory Of...

TOM BEAM

Carol Beam

ERNEST CUFF

Ellen Deacon

MARJORIE DICKEY

Rhonda Dickey

RITA FALCHEK

Stephen Flachek and
John Offidani, III

MARY JANE FISCHER

Sally J. Linnett

JERRY E FREEDMAN

Sherri Freedman

DR. MINDY GOLDBERG ROSE

Nancy and Bob Elfant
Charles Rose
Dr. Allison Rose and Mr. Josh Rose
Mike Salmanson and Tobi Zemsky

LUCKY HERTFELDER AND SHARON CLAUSON

Heidi Hertfelder

KATIE ROSE HORN

Meghan Horn

DR. STEPHEN KAY

Dr. Rhonda Karp

MARY C. KEENAN

Kara Keenan Sweeney

JOHN KOSCELNIK

Valerie Koscelnik

SHEILA KUTNER

Dr. Beverly Emanuel

NANCY LANG BOYER

Mary Ann Boyer

WENDY AND BILL MACLAUGHLIN

Catharine Slusar and
Whit MacLaughlin

SUE ANN MARBURG

Bob Marburg

MIRIAM NORRIS

Daniel and Jeannette Norris

JUDITH NOVELLINO

Andrew S. Berry

KRISTIN OSGOOD LAMELAS

Diane Hlywiak, Esquire

EVELYN OSHEROW

Sharon Goldman

GEORGE AND DOLORES OTTINGER

Stephen and Kathy Thompson

HARRY PORTER SR.

Anonymous

RICHARD REPETTO

Dan Rothermel and
Michael Hairston

ANNIE RICHARDSON

Anonymous

JULIAN ROSTAIN

Anthony Rostain

GEORGE R. SZYMANSKI, ESQ.

Dr. Dolores Szymanski

JOEL SEIDEL

Devra Seidel

GERI TALLONE

Scott and Lynda Glading

CHRISTINA VAUGHT

Anonymous
M & M Baltrush
Kathleen Baltrush
John Baltrush and Pam Allen
John Barr
Wallace and Denise Bateman
Catherine Biagetti
Pam and Steve Briggs
Richard Cieslak
Kathleen and Bob Cochrane
Paula Cortes
Elizabeth D'Cruz
Gina and Charlie DiPonziano
Joyce Dzekciorius
Mike Falcone
Katherine Fandetti
Daniel Farah
Larry Friedman and Lisa Fletcher
The Gamberdella Family
Gifford Family
Sheila L. Greer
Marjorie Grebow
Nancy Haverstock
Colleen Hulse
Richard Kordorsky
Joe and Doreen Kordorsky
Larry and Gail Malcolm
Anna Lee and Andy McAleese
Gregory and Linda Nosal
Sharon Pacek and Paul Harvitz
Casea Paradis
Jerrold Pierce and Linda Fletcher
Michael and Lyndsay Pio
Regina Poletti
Tim and Joan Riddle
Jerry and Nancy Roberts
The Divas
Deborah Proto and
Kimberly Saccucci
Carol and Allen Short
Ryan and Amber Simatic
Cindy and Randy Simatic
David and Liza Spaventa
Paul Traviline
Sharon and Jim Wheeler

ASTER WAMSER

Polly Shaffer

SAMUEL WEINBERG

Taube and Sam Weinberg

FRED AND ARLEEN WEINSTEIN

Judy and Palmer Hartl

DARRAGH WRIGHT KARR

Darragh Wright Karr's family

DEBBY YODER

Paul and Andrea Downie

CASEY ZEFF

Eileen Heisman and Marty Tuzman

Gifts To Named Funds...

NAMED SEATS THIS SEASON

Anonymous
George J Ahern
Megan Bellwoar and
Michael Hollinger
Stephen and Laura Harrison
Joseph Pinto
Matthew Pinto
Thomas Pinto
Ann Pinto McCarney
Rudy Sprinkle and Andrea Barsevick
Robert and Lisa Trucksess
Joyce Weiner and Albert Tedesco

ANDREA MENGEL FUND

Derick Dreher
Independence Foundation
Susan Sherman

ARTISTIC FUND

Morna Livingston

ANN B. MCNAMEE FAMILY THEATRE FUND

Dennis and Louise Buckley
Dennis and Melissa Rodkin
Robert and Joan McLaughlin

THE DR. MINDY GOLDBERG ROSE INTERNSHIP FUND

Josh Asher
Larry Cohen
Nancy and Bob Elfant
Equitable/ AXA Foundation
Kate and Barry Muchnick
Ellen Panofsky and Mark Noel
Jon Panofsky
Dr. Allison Rose and Mr. Josh Rose
Charles Rose
Heidi and Mitchel Rubin,
In Honor of Nathan Dorman
Dorothy Sheridan

THE BERNARD AND CAMILLE ROSENBERG FAMILY THEATRE FUND

Bernard and Camille Rosenberg

Board and Committee Members

Board of Directors

Michael A. Donato, *President*
Rayenne Chen, *Vice President*
Rhonda Ball, *Vice President*
Michael S. MacFarland, *SVP, Treasurer*
Richard L. Maimon, *Secretary*
Kelly Colarelli
Anne Cook
Joy L. De Jesús
Robert Elfant
Nancy Elfant
Elizabeth A. Fernández-Viña
Elizabeth H. Gemmill
Peter Hamilton
Jen Harmelin
Richard Harris
Valerie I. Harrison
Ann Marie Horner
Holly Kinser
Dr. Saifuddin T. Mama
John J. McCawley, *P.E.*
Amy L. Murphy
Terrence J. Nolen
Hon. Rosalyn K. Robinson
Charles H. Rose
Monica Rosenthal
Genieve Shields
Lee van de Velde
Steve Wolfson
Diane Dalto Woosnam
Ellen Yin

Board Executive Committee

Michael Donato, *Chair*
Michael MacFarland
Rhonda Ball
Rayenne Chen
Anne Cook
Joy L. De Jesús
Robert (Bob) Elfant
Holly Kinser
Richard L. Maimon
Lee van de Velde

Finance Committee

Michael MacFarland, *Chair*
Juan De León Domenech
Ellen P. Foster
Anne Marie Horner
Dan Hilferty
Daniel Krewson
Eliza Orleans
Harvey Swedloff
Steve Wolfson

Board Development Committee

Rayenne Chen, *Chair*
Michael Donato
Robert Elfant
Joy L. De Jesús
Holly Kinser
Saifuddin T. Mama
Lee van de Velde
Diane Dalto Woosnam

Personnel Committee

Rhonda Ball, *Chair*
Michael Donato
Elizabeth H. Gemmill
Richard Harris
Michael S. MacFarland
Charles H. Rose

Engagement Committee

Lee van de Velde, *Chair*
Anne Cook, *Chair*
Elizabeth Fernández-Viña
Nancy Elfant
David Hackney
Camille Rosenberg
Lillian Ransom
Hope Yursa

Facilities Committee

Richard L. Maimon, *Chair*
Mike Green
James Kronzer
John J. McCawley
H. Hetherington Smith
Chris van de Velde

Equity, Diversity, and Inclusion (EDI)

Rayenne Chen
Anne Cook
Joy L. De Jesús
Robert Elfant
Kash Goins
Richard Harris
Dr. Valerie Harrison
Zuhairah McGill
Amy L. Murphy
Bi Jean Ngo
Terrence J. Nolen
Hon. Judge Rosalyn Robinson
Clayton Tejada
Orelí Uzdavinis

Young Friends Committee

John Connolly
Elizabeth A. Fernández-Viña
Aby Rodríguez



all you need is fresh flowers

WWW.NEFLOWERBOUTIQUE.COM
NORTHEASTFLOWERS@GMAIL.COM
@NE_FLOWER_BOUTIQUE

🌐 📧 📷

OLD CITY
(267)570-7707
60 N 2ND ST

NE PHILLY
(215)437-1913
11702 BUSTLETON AVE

NE FLOWER BOUTIQUE
www.neflowerboutique.com

Artistic	Producing Artistic Director.....	Terrence J. Nolen
	Associate Artistic Director.....	Jonathan Silver
	Artistic Assistant.....	Nick Hatcher
	Commissioned Playwrights.....	Lorene Cary, Kash Goins, Robi Hager, Rogelio Martinez, Irais Ann Reilly
Administrative Management	Managing Director.....	Amy L. Murphy
	General Manager.....	Clayton Tejada
	Business Manager.....	Paola Cruz
	Audience Services Manager.....	Tanner Richardett
	Facilities And Office Manager.....	Larry Brooks
	Arden Professional Apprentices.....	K.C. Casey, Laura Duffy, Meili Huang, Tomas Torres
Marketing	Director of Marketing and Communications.....	Mike Hogue
	Marketing Manager.....	Erika Byrnison
	Publicist.....	En Route Marketing
	Marketing and Group Sales Associate.....	TJ Harris
Development	Director of Development.....	Jessica Abel
	Manager of Individual Giving.....	Orelí B. Uzdavinis
	Manager of Institutional Giving.....	Matthew Reddin
	Development Coordinator.....	Tylar Benedetto
Education	Director of Education and Community Outreach.....	Hannah Cordes
	Education Associate.....	Josh Thorps
	Teaching Artists.....	Elise D'Avella, TJ Harris, Campbell O'Hare, Brennen Malone, Donovan Lockett, Mariah Ghant, Liz Crino, Kennedy McAlister, Jessica Money, Taylor J Mitchell, Julianna Babb, Cindy Paul, Hannah Catanoso, Grant Uhle, Nicole Renna, Andrea Rose Cardoni, Jennifer Peacock, Giavanna Genovese, Justin Yoder, Seraina Schottland, Foster Longo, Danny Walsh, Jessy Gruver, Francine Odri, Marie McVeigh, Bari Rose Secondino, Brianna Arce, Nic Ecker
	Dr. Mindy Goldberg Rose Intern.....	Mars Berger
Front of House	Box Office Manager.....	Jason Blacketer
	Assistant Box Office Manager.....	Amanda Adams
	House Manager.....	David Demnicki
	Front of House Associate.....	Ryn Bondi
	Front of House Assistants.....	Angel Acuña, Adiah Hicks, Becky Fleckner, Catey Midla, Chelsey Gaskins, Emily Hernandez, Erica Lowry, Glynnis Nadel, Ian Gaskin, Kat Pilkus, Margaux Cattelona, Syaera Cort, Will Vence Jr., Victoria Zdunkiewicz
Production	Production Manager.....	Kate Nelson
	Technical Director.....	Evan Lewis
	Assistant Technical Director.....	John Winter
	Charge Scenic Artist.....	Kristina Chadwick McGrath
	Electrics Supervisor.....	Martin Stutzman
	Sound Supervisor.....	John Kolbinski
	Costume Supervisor.....	Stephanie Shaw
	Properties Supervisor.....	Shane Dreher
	Assistant Stage Manager.....	Jill Chase
	COVID-19 Safety Managers.....	Clayton Tejada, Jonathan Silver
	Assistant Lighting Designer.....	Emmanuel Garcia-Castro
	Electricians.....	Meghan Moore, Emily Muirhead, Heather Pynne
	Electrics Programmers.....	Brittany Chato, Ana Crawford, Isabella Gill-Gomez
	Carpenters.....	Anna Ryabova, Luis Feliciano
	Wardrobe Supervisor.....	Ryn Smith
	Video Operator & Deck Crew.....	Luis Feliciano
	Stitchers.....	Amanda Carano, Emily Muirhead

CREATIVE REAL ESTATE FOR CREATIVE PEOPLE



Happy Clients

Charlie DelMarcelle
Barrymore Award
Winning Actor
Katherine Fritz
Costume Designer



BENJAMIN CAMP

REALTOR® & CCSJ Team Leader
Actor & Producer



JAMES SUGG

REALTOR®
Actor & Sound Designer

The CCSJ Team is proud to continue our *Support the Arts Initiative*, donating to local performing arts organizations for every closing. Whether you're on-stage, behind the scenes, or in the audience, choose the REALTOR[®]s who support our arts community.



Contact
Benjamin



📞 610.220.8550
✉️ ben@ewrhomes.com



Contact
James



📞 267.303.2827
✉️ sugg@ewrhomes.com

215.893.9920
THESTELLARCHOICE.COM | ELFANT WISSAHICKON
2000 PINE ST, PHILADELPHIA, PA 19103

Elfant
Wissahickon
— REALTORS® —