

Arden Children's Theatre

the **BFG**

BIG FRIENDLY GIANT

By
Roald Dahl

Adapted by
David Wood

Social Narrative



Meet the Actors!

1



Matteo Scammel *he/him*
(Dad/The BFG)

Fun Fact: I play the guitar!



Jessica Money *she/her*
(Sophie)

Fun Fact: I have never done a cartwheel because I am afraid of being upside down.



Bi Jean Ngo *she/her*
(Mom/Childchewer/Miss Plumridge/
Queen of England)

Fun Fact: I have my own Big Friendly Giant who lives in my house, named Archie Beefnoodle, and he is a large, fluffy, black dog who is my loyal sidekick.



Leah Walton *she/her*
(Katherine/Meatripper/
Classmate/Mary)

Fun Fact: This summer, I completed a 400 mile bike ride with my mom!

Meet the Actors!

2



Adaeze Nwoko *she/they*
(Rebecca/Gizzardgulper/Undermaid/
Queen of Sweden)

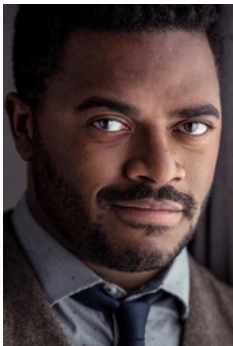
Fun Fact: I believe the perfect dessert is a warm, freshly glazed Krispie Kreme donut.



Kishia Nixon *she/her*
(Sam/Bonecruncher/

Classmate/Head of Air Force)

Fun Fact: My first ever play was when I was in 3rd grade and I played Rosa Parks!



Newton Buchanan *he/him*

(Guy/Fleشلumpeater/Classmate/Ronald Simkins/Mr. Tibbs)

Fun Fact: I'm also a tech enthusiast who loves discussing digital tools, web applications, movies, and video games.



Jo Vito Ramirez *they/them*

(Daniel/Bloodbottler/
Headmaster/Head of Army)

Fun Fact: I learned how to whistle while attempting to learn to blow a bubble gum bubble.

I am going to see a play!



I am going to see a live performance of *The BFG* at the Arden!



There will be a 15 minute intermission in the middle of the show and a talkback after the show.



The show will be on stage inside the Arden. I will find more information about the building below.

What will I do at the Arden?

4



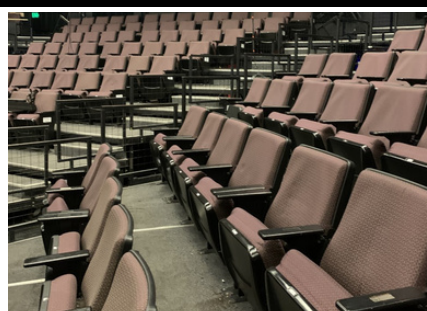
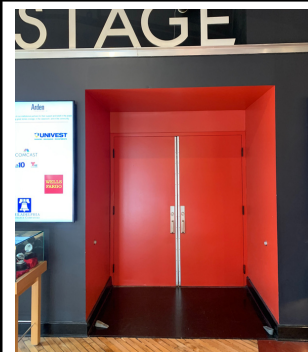
I will enter up the steps to the front entrance or up the ramp to the side entrance.



I will check in at the box office and will be directed to the theatre.



I will then walk through the lobby leading to the red double doors into the theatre. An usher will greet me, scan my ticket, and hand me a stagebill.



I will enter the theatre and an usher will show me where to sit.

What will I do at the Arden?



Before the performance begins, I can stay seated or stand in front of my seat. I can also talk and stretch by my seat. I will also have the chance to use the restroom.



Someone will go on the stage and give a curtain speech, where they will discuss what is expected of me during the show. Once this person begins their speech, I will sit in my seat and stay seated.



The lights in the audience will dim to let us know that the show is starting. The actors will then come onstage and perform the show. There will be lights, sound, and music.



The actors in this show will be wearing many costumes and masks while operating puppets of different sizes. This may feel strange or scary at times, but I will remember that they are still just the actors I saw before!



Halfway through the show, the lights will get bright again for intermission. I can return to the lobby, stretch my body, and use the bathroom. Then, the lights in the lobby will flicker to let me know when to return to my seat in the theatre. The lights will dim again, I will get quiet, and the show will continue!

Photos by Mark Garvin and Ashley Smith, Wide Eyed Studios.

What will I do at the Arden?



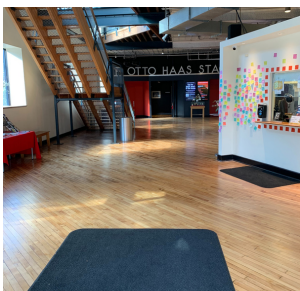
When the show is complete, the actors will come out onstage and bow. I can applaud while the actors take their bows to show them I appreciate their performance.



When the performance is over, the lights in the audience will get brighter. I will stay seated and get ready for the talkback with the actors.



During the talkback, I can raise my hand to answer and to ask questions of my own, when appropriate. The talkback will last around 15 minutes.



After the talkback ends, I will leave the theatre through the red double doors that I entered through. I will then walk through the lobby to exit through the front doors.

Photos by Mark Garvin and Ashley Smith, Wide Eyed Studios.

What is expected of me at the Arden?

7



Masks are optional in the theatre. I will have the option to wear my mask or not wear my mask. It is up to me!



I will use the restroom before the show, during intermission or after the show. I will only leave the theatre during the play to use the bathroom if it is absolutely necessary.



If I have a personal electronic device like a cellphone, I will turn it off or silence it before the show begins. I will not take any pictures or videos of the performance.



There are assisted listening devices (ALD) in the box office for me to use if I need further assistance in hearing everything on the stage. If I need to use an ALD or have any questions, I can let an usher know!

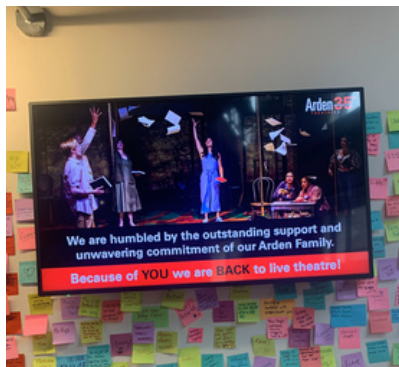
What is expected of me at the Arden?



Once the performance begins, I will stay seated. Something the actors do or say might make me laugh, cry, or make other sounds. That is great and will help the actors know that I am engaged.



I will enjoy the set while remaining in my seat. I may look but not touch the set or climb on the set at all while I am in the theatre.



If at any point during the show, I feel overwhelmed or need to step out of the theatre for any reason, I will ask an adult if I can step outside into the lobby. I will have the option to keep watching the actors on the monitor on the wall.

Photos by Mark Garvin and Ashley Smith, Wide Eyed Studios.

Thank You For Joining Us!

the **BFG**

BIG FRIENDLY GIANT

By
Roald Dahl

Adapted by
David Wood

Enjoy the show!

