

Arden Children's Theatre

PETER PAN



Adapted for the stage by
Douglas Irvine

From the book by
J.M. Barrie

November 27, 2024 – January 19, 2025



Arden
THEATRE CO.

Teacher Resource Guide

*A Study Guide for Young
Adventurers!*

Dear Teachers,

Thank you so much for joining us for the first Children's Theatre show of the season - *Peter Pan* by J.M. Barrie and adapted by Douglas Irvine. We can't wait to begin this magical, theatrical journey with you and your students.

In the following pages, you will find a collection of resources, worksheets, activities, ideas, etc. related to our production of *Peter Pan*. Feel free to pick and choose the materials that best help you and your students engage with the show.

We can't wait to have you here at the Arden again!



Table of Contents

<i>Peter Pan</i> and the Empire of Light.....	4
About the Author.....	5
Synopsis.....	6-7
Meet our Crew.....	8-9
Discussion Questions.....	10
Worksheet: Character Quiz.....	11
Character Quiz Answer Key.....	12
Worksheet: Vocabulary.....	13
Worksheet: Explore Your Neverland.....	14
Worksheet: Neverland Questions.....	15
Classroom Activity: How to Read A Compass.....	16-17
Find Your Pirate Name.....	18
Word Scramble.....	19
Video Resources.....	20
Craft Ideas.....	21

Peter Pan and the Empire of Light:

Every play has a **Director**. The Director is in charge of bringing the play to life onstage. They decide how the play will look, where the actors will go, what message they want to tell the audience, *and* they work with all members of the crew to determine the lights, set, sounds, and costumes. Kind of like the Captain of a ship, the Director is inspired to steer the play toward success!

Our Captain for this production, Mr. Whit MacLaughlin, found the inspiration for Peter Pan show in a piece of artwork called "***The Empire of Light***" by Rene Magritte.

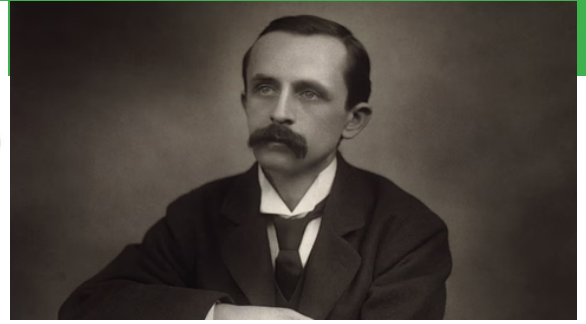
The painting shows a bright blue sky with white clouds, but below, the street and house are lit only by a streetlight, as if it's nighttime. This strange combination of night and day in one picture makes us think: **Things aren't always what we expect, there must be more to discover.** The painting is part of a series where the artist liked to mix things that don't usually go together, like light and dark, to make us look at the world in a new way.

When things seemingly don't go together, we call that a "contradiction."

Our Director says, "Adventure is a gift filled with contradictions"



About The Author



J.M. Barrie was a famous author and playwright from Scotland, best known for creating the magical story of *Peter Pan*. He was born on May 9, 1860, in a small town called Kirriemuir in Scotland. As a young boy, Barrie loved reading books and telling stories, and he was especially interested in how stories could make people laugh and dream.

As an adult, Barrie became a successful writer and wrote many plays and books, but *Peter Pan* became his most famous work. The story was first performed as a play in 1904, and later it was turned into a book, *Peter and Wendy*, in 1911. Barrie's writing was full of imagination, and he loved to create characters who went on exciting adventures, just like *Peter Pan*.

In addition to writing, Barrie is known for his kindness and generosity. After writing *Peter Pan*, Barrie became a supporter of the Great Ormond Street Hospital (GOSH,) and in 1929 he donated the rights to *Peter Pan* to GOSH. This gave the hospital the royalties from every production of the play and publication of *Peter Pan*, a gift which continues to benefit many children to this day! If you visit the hospital, you will see a bronze statue of *Peter Pan* and *Tinker Bell* out front!

J.M. Barrie passed away in 1937, but his stories, especially *Peter Pan*, have lived on for generations. Today, we still read about *Peter*, *Tinker Bell*, *Wendy*, and the pirates of *Neverland*, keeping Barrie's magical world alive.

PETER PAN: A SYNOPSIS

Peter Pan is a magical story about a boy who never grows up and the incredible adventures he has in a land called **Neverland**.

It all begins in London, where two children, **Wendy and Michael Darling**, are about to go to bed one night. But something surprising happens—**Peter Pan** appears in their nursery! Peter is a mischievous, fun-loving boy who can fly and never ages. He invites the Darling children to come with him to Neverland, a magical place where no one grows up.

With the help of **Tinker Bell**, his tiny, sparkly fairy friend, Peter teaches the children how to fly. They soar through the night sky, leaving London behind and heading toward the incredible world of Neverland.



When they arrive in Neverland, the Darling children discover a world full of exciting and dangerous creatures. There are **pirates, a princess, wild animals**, and even a **giant crocodile** that follows **Captain Hook**, the villain of the story. The **Lost Boys**, a group of children who, like Peter, never grow up, also live in Neverland. Peter is their leader, and they have fun together, playing games and having adventures.

The Darling children meet the **Lost Boys**, and Wendy becomes like a mother to them. She takes care of them, tells them stories, and helps them stay safe. **Michael** joins in the adventures, and the group becomes a close-knit family in the wild and magical land of Neverland.



PETER PAN: A SYNOPSIS

But not everything in Neverland is fun and games. **Captain Hook**, the mean pirate captain, is always trying to catch Peter Pan. Hook is very angry at Peter because years ago, Peter cut off his hand in a sword fight, and Hook had to replace it with a **hook**. Since that day, Hook has wanted revenge.

Hook is constantly planning ways to trap Peter, and he has his crew of pirates to help him. The pirate ship is huge, and the pirates are scary, but they're no match for Peter Pan and his friends. One of the scariest things about Captain Hook is his fear of the **crocodile**, which follows him everywhere, hoping to eat him. The crocodile makes a loud ticking sound with a clock inside its belly, and it reminds Hook that danger is always near!



Throughout their time in Neverland, the Darling children and the Lost Boys have many adventures. They play, explore, and face dangerous situations, like a **battle** with Captain Hook's pirates and a rescue mission to save **Tiger Lily**. Tiger Lily is captured by Hook and his crew, but Peter and his friends manage to rescue her, showing their bravery and teamwork.

Wendy begins to miss her family in London, but Peter Pan can't imagine leaving Neverland. He loves his adventures and doesn't want to grow up like everyone else.



In the end, Wendy and Michael return to London, and Peter says goodbye, promising that he will come back to visit London one day. As they fly back to London, **Wendy looks out at the stars and knows that the magic of Neverland will always be a part of her.**

Peter Pan stays in Neverland, continuing his adventures with the Tinker Bell, never growing up, and **always ready for the next exciting challenge.**

Meet the Actors



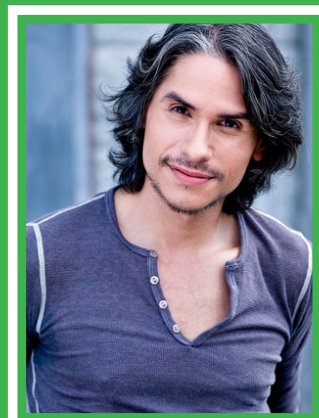
Jo Vito Ramirez *they/them*
(Peter Pan)

Fun Fact: My bowling average is 127!



Campbell O'Hare *she/her*
(Wendy Darling)

Fun Fact: I love to play Dungeons
and Dragons!



J. Hernandez *he/him*
(Hook)

Fun Fact: I used to play percussion
in High School!



Jessica Money *she/her*

(Jane Darling/Tootles/ Bill Jukes/Tiger Lily/
Cookson/Tinker Bell/Mermaid)

Fun Fact: This is my 5th principle Arden show!



Lee Minora *she/her*

(Darling/Smee/Nibs/
Tinker Bell/Mermaid)

Enjoy the show!



Adam Howard *he/him*

(Michael Darling/Slightly/
Starkey/Cecco/Noodler
Tinker Bell/Mermaid)

Fun Fact: I'm from Tennessee and I have a 16
year old dog named Chester!

Understudies

Jordan Chall, Jane MacLaughlin, Henry Glejzer, Dallas Jimmar,
Niamh Sherlock, Eliza Waterman

Discussion Questions

1. In the play, 6 actors play more than 20 characters. Which design elements helped you to know which character was which? Which actor tools did the actors use to create different characters?
2. When Peter Pan was written, children often played make-believe with pirates and mermaids. If J.M. Barrie were writing Peter Pan today, what sorts of make-believe characters and adventures do you think the story would contain?
3. Peter says he came to the nursery window to hear Wendy's stories, because none of his friends knew any. If you could only share one story, which would it be?
4. Peter Pan refuses to grow up, yet he and Wendy spend a great deal of time pretending to be adults. What appeal do you think each of them finds in this sort of game?
5. Why do you think Tinker Bell distrusts Wendy at first? How do you think Tinkerbell could have reacted to Wendy differently?
6. Peter tells Wendy and Michael that they need to pixie dust and "to think lovely thoughts" in order to fly. If you had pixie dust, what would you think of to make yourself fly?
7. Why is Captain Hook enemies with Peter Pan? What do you think Captain Hook doesn't like about Peter Pan?
8. The Lost Boys like to talk about things they think they remember from the real world, as well as their mothers. Why do you think that is?
9. Captain Hook and the pirates are the only adults on Neverland, but in what ways do they act like children themselves?
10. What does Wendy gain by her voyage to Never Land? Does she learn anything about herself in her trip? Do any of the other characters change or learn?
11. Why do you think Peter Pan didn't come back to see Wendy until she was all grown up? Why did author J.M. Barrie make the choice to make Peter a forgetful character?
12. Peter Pan has been performed on stage for more than one hundred years. Why? What has made the story so popular? Why is it popular with children, and why is it also popular with adults?

CHARACTER QUIZ

1. Which character is known for having a hook for a hand?

- a) Smee
- b) Captain Hook
- c) The Crocodile

2. Who is the leader of the Lost Boys?

- a) Peter Pan
- b) Tinkerbell
- c) Michael Darling

3. What is the name of the fairy who is very protective of Peter?

- a) Wendy
- b) Tiger Lily
- c) Tinker Bell

4. Which character is the mother figure to the Lost Boys in Neverland?

- a) Wendy
- b) Tinker Bell
- c) Tiger Lily

5. Who is the friendly, kind pirate who works for Captain Hook?

- a) Smee
- b) Crocodile
- c) The Lost Boys

6. Who is Wendy's younger brother?

- a) Peter Pan
- b) Michael Darling
- c) Captain Hook

7. Which character is the brave and cunning princess?

- a) Tiger Lily
- b) Wendy
- c) Tinker Bell

8. Who makes a "tik-tok" sound, and is chasing Captain Hook?

- a) Peter Pan
- b) The Crocodile
- c) Smee



Answer Key

Hey Pirates! Flip this upside down to reveal the answers!

1. Which character is known for having a hook for a hand?
a) Smee
b) Captain Hook
c) The Crocodile
2. Who is the leader of the Lost Boys?
a) Peter Pan
b) Tinkerbell
c) Michael Darling
3. What is the name of the fairy who is very protective of Peter?
a) Wendy
b) Tiger Lily
c) Tinker Bell
4. Which character is the mother figure to the Lost Boys in Neverland?
a) Wendy
b) Tinker Bell
c) Tiger Lily
5. Who is the friendly, kind pirate who works for Captain Hook?
a) Smee
b) Crocodile
c) The Lost Boys
6. Who is Wendy's younger brother?
a) Peter Pan
b) Michael Darling
c) Captain Hook
7. Which character is the brave and cunning princess?
a) Tiger Lily
b) Wendy
c) Tinker Bell
8. Who makes a "tik-tock" sound, and is chasing Captain Hook?
a) Peter Pan
b) The Crocodile
c) Smee
9. Which character never wants to grow up and lives in Neverland?
a) Michael Darling
b) Wendy Darling
c) Peter Pan



VOCABULARY, MATEY!

ADVISABLE (adj.) Describes something that is wise, sensible or reasonable. *"I wonder if it would not be advisable, Starkey, to humor the Hook?"*

AMBITION (n.) A strong desire to reach a goal. *"Better perhaps for Hook to have had less ambition!"*

BAUBLE (n.) A showy trinket that has little value or importance. *"Fame, Fame, thou glittering bauble"*

BELATED (adj.) Late or overdue *"...their tongues searching for belated crumbs housed insecurely on their shining cheeks..."*

CALABASH (n.) A water container made from the dried fruit of a calabash tree. *"Slightly, is your calabash empty?"*

COZENING (n.) Trickery or deception. *"Brimstone and gall, what cozening is here?"*

INFERNAL (adj.) Very irritating or unpleasant. *"Look at that smile. That infernal smile"*

INSOLENT (adj.) Disrespectful or rude. *"Proud and insolent youth, prepare to meet thy doom!"*

MUTINY (n.) The act of openly disobeying or fighting leaders. *"And now, did any other gentleman say mutiny?"*

NOTION (n.) An idea, opinion or belief. *"Steady lads! I've had a notion"*

PRAM (n.) British word for a baby carriage or stroller. *"They are the children who fall out of their prams when no one is looking."*

SCORE (adj.) Twenty. *"And yet I've often heard you say your hook is worth a score of hands!"*

SINISTER (adj.) Evil or dangerous. *"Dark, sinister man, have at thee!"*

YONDER (adj.) Far away, at a distance. *"Where does she lie?" "In yonder glade."*

EXPLORE YOUR NEVERLAND!

Neverland is full of amazing places! Using the page below, create your own Neverland by coloring and labeling every place you'd want on your island!

NEVERLAND



NEVERLAND QUESTIONS!



☆ What activities would you do there?

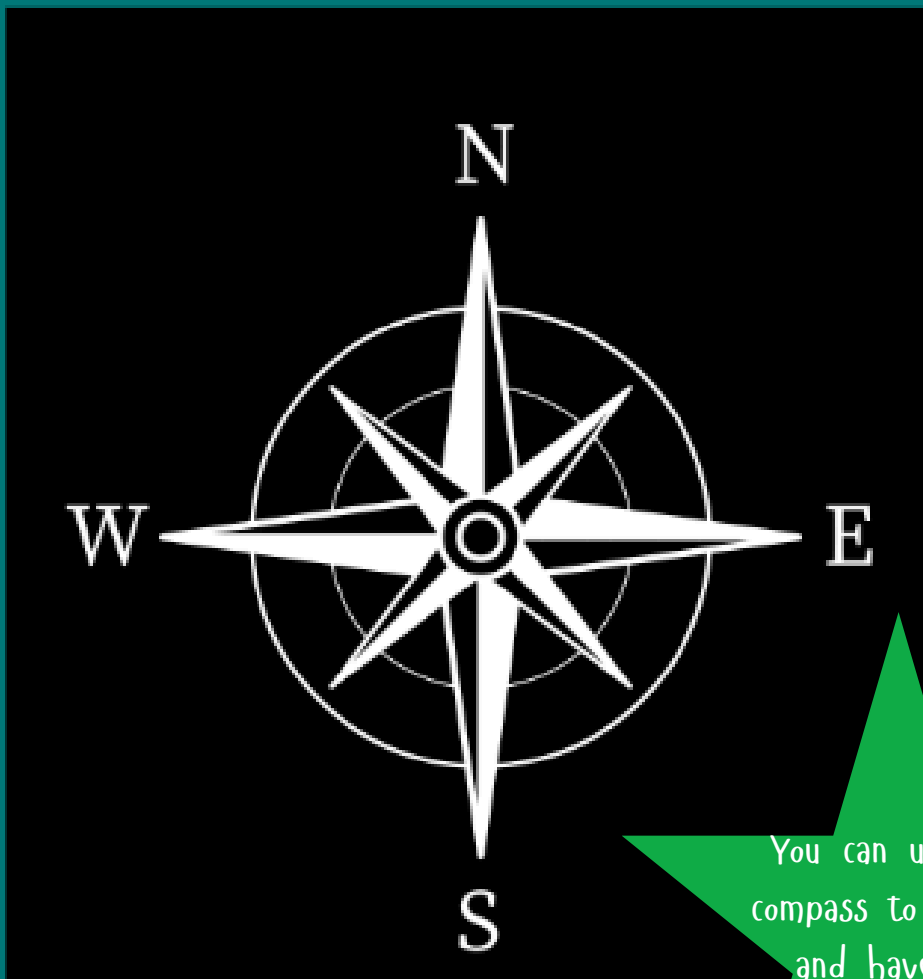
☆ What does it look like, smell like, sound like?

☆ Where do you live? What do you eat?

☆ How many other kids live there?

READING A COMPASS

HEY THERE PIRATES! ON YOUR
NEVERLAND MAP, YOU PROBABLY
NOTICED THIS SYMBOL:



You can use the
compass to explore
and have fun
outdoors!

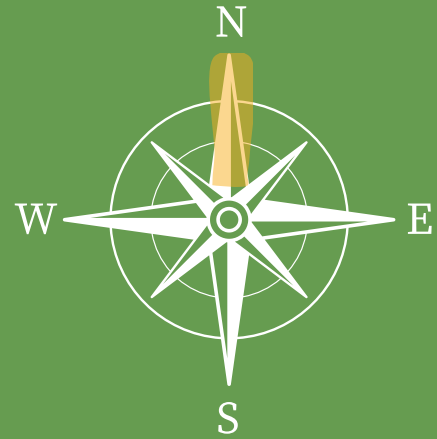
THIS IS CALLED A **COMPASS**, A
SPECIAL TOOL THAT HELPS YOU
FIND YOUR WAY!

THE **LETTERS** ON A
COMPASS ALL MEAN
DIFFERENT DIRECTIONS

HERE'S A FUN AND SIMPLE GUIDE ON HOW TO READ A COMPASS:

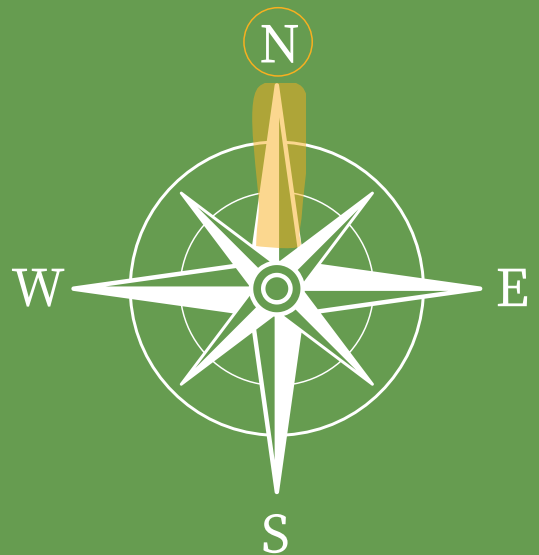
1. Look at the Compass Needle

The compass has a needle inside that always points to north (the top of the compass). This is the most important thing to remember because it helps you figure out the other directions!



2. Find North

When you hold your compass flat in your hand, the needle points to north. The side of the compass where the needle points is north. That means if you're facing the north side of the compass, you're facing north.

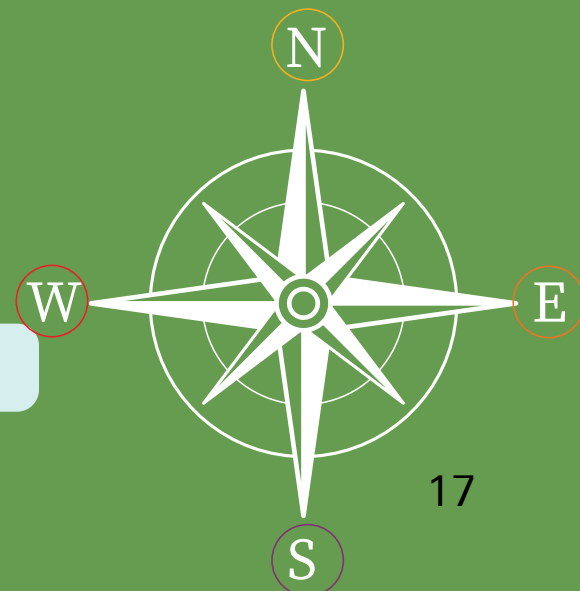


3. Start facing North, then find the other Directions turning!

For **East**: turn to your **right**!

For **West**: turn to your **left**!

For **South**: Turn around and look **behind you**!



FIND YOUR PIRATE NAME

1. Use the first initial from your first name...

A= Captain
B= Dirty
C= Squidlips
D= Bowman
E= Buccaneer
F= Two Toes
G= Sharkbait
H= Old
I= Peg Leg

J= Fluffbucket
K= Scallywag
L= Bucko
M= Dead man
N= Matey
O= Jolly
P= Stinky
Q= Bloody
R= Miss

S= Mad
T= Red
U= Lady
V= Bretheren
W= Rapscaillon
X= Landlubber
Y= Wench
Z= Freebooter

2. Use the first initial from your middle name...

A= Creeper
B= Jim
C= Storm
D= John
E= George
F= O'
G= Rat
H= Jack
I= Legs

J= Head
K= Cackle
L= Patch
M= Bones
N= Plank
O= Greedy
P= Sea
Q= Mama
R= Spike

S= Squiffy
T= Gold
U= Yellow
V= Felony
W= Eddie
X= Bay
Y= Thomas
Z= Spot



3. Use the first initial from your last name...

A= From the West
B= Byrd
C= Jackson
D= Sparrow
E= Of the Coast
F= Jones
G= Ned Head
H= Bart
I= O'Fish

J= Kidd
K= O'Malley
L= Barnacle
M= Holystone
N= Hornswaggle
O= McStinky
P= Swashbuckler
Q= Sea Wolf
R= Beard

S= Chumbucket
T= Rivers
U= Morgan
V= Tuna Breath
W= Three Gates
X= Bailey
Y= Of Atlantis
Z= Of Dark Water

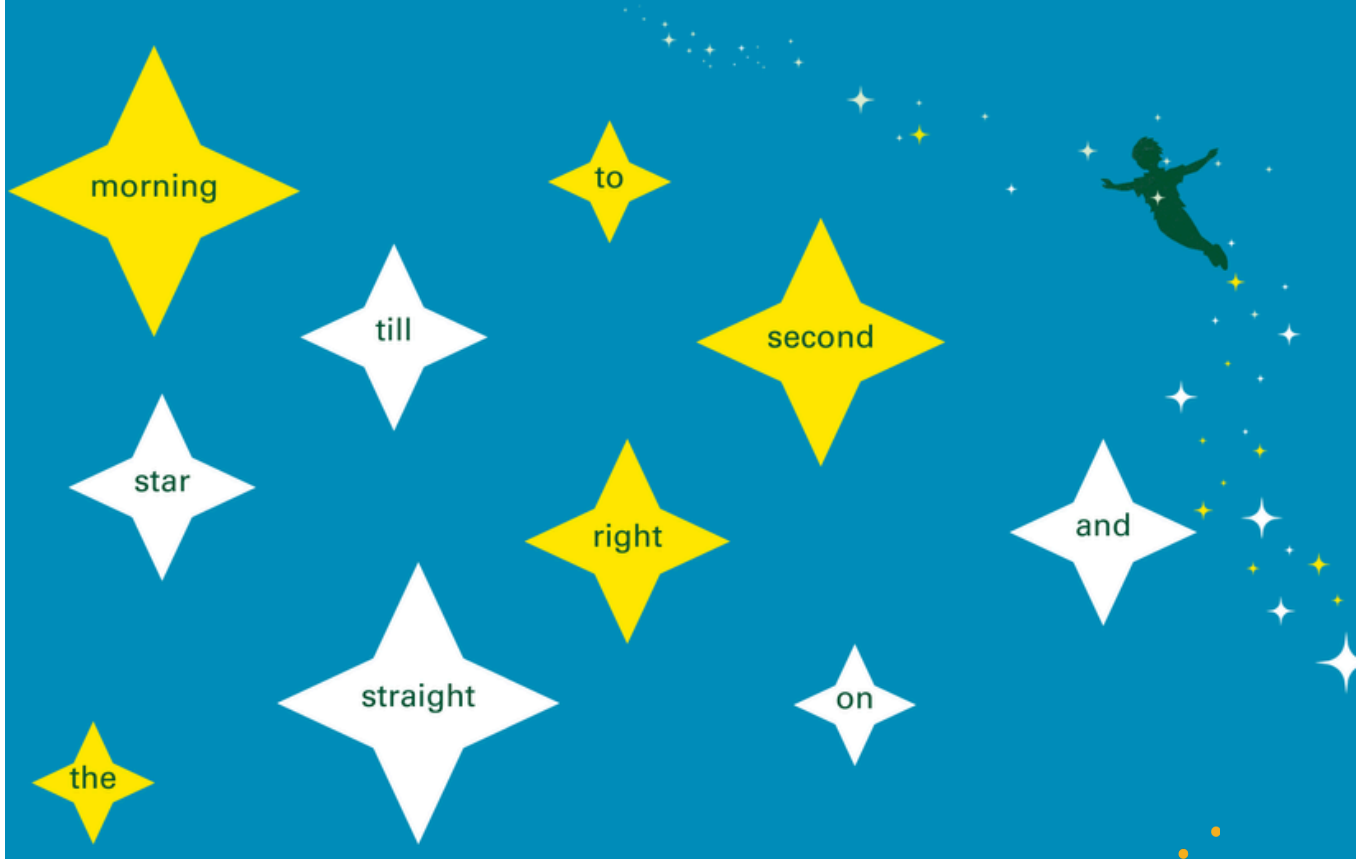
NOW YOU'RE SET TO START EXPLORING MATEY!



WORD SCRAMBLE

Can you help Wendy reach Neverland?

Unscramble the words in the stars to reveal how to get there.



Video Resources

Classroom-Friendly Resources

While many versions of Peter Pan contain examples of cultural appropriation and content not suitable for modern young readers, there are examples of more appropriate adaptations or scenes to introduce students to the story!

Peter Pan Adaptations

- **National Theatre’s Production of Peter Pan Trailer**
 - A trailer for the 2017 production! You can also watch the full production online.
 - Duration: 0:55
 - Link: [Peter Pan: Trailer - Peter Pan - National Theatre at Home](#)
- **“I Won’t Grow Up” musical number**
 - A clip from the original 1954 musical starring Mary Martin
 - Duration: 3:06
 - Link: [mary martin peter pan ~ I won't grow up \(HD\)](#)
- **“I’m Flying” musical number**
 - A clip from a version of the musical in 2000 starring Cathy Rigby-a great example of theatrical flying!
 - Duration: 3:49
 - Link: [Peter Pan - I'm Flying](#)

Theatre and Technical Effects

- **Elements of Drama**
 - Breaks down what is needed to create a play and how to read dramatic literature
 - Duration: 2:21
 - Link: [Elements of Drama](#)
- **The Science of Theatrical Flying**
 - Kid scientist, Kendall, explains the science of theatrical stage flying
 - Duration: 10:54
 - Link: [The Science Behind Stage Flying and Stage Flying Effects](#)
- **Light and Shadows for Kids**
 - A video about the science of light and shadows
 - Duration: 4:59
 - [Light and Shadows for Kids | Science Video for Kids | Kids Academy - YouTube](#)

Introduction to Surrealist Art and Painter, René Magritte

- **What is Surrealism?**
 - A video from the Tate Modern Art Museum in London describing surrealist art
 - Duration: 2:26
 - Link: [What is Surrealism? | Tate Kids](#)
- **Art with Mati and Dada – René Magritte**
 - Who is René Magritte? And why is his art so mysterious? Discover more about this artist with the show, Art with Mati and Dada!
 - Duration: 7:38
 - Link: [Art with Mati and Dada – René Magritte | Kids Animated Short Stories in English](#)

Craft Ideas

MAKE YOUR OWN FAIRY AND FAIRY DUST!

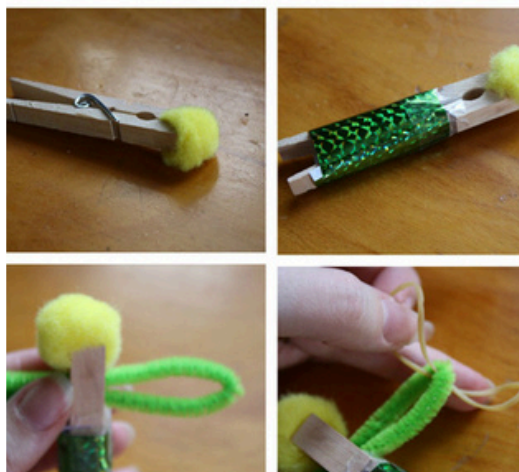


Create your own Tinker Bell to take with you on all of your adventures! You can create your own Fairy Dust too. Just remember to think happy thoughts!

Follow the step-by-step tutorial links below for a wonderful activity to use with your students:

Make your own fairy

[TinkerBell, Peter Pan and Hook \(Craft Tutorial\) - Finding Zeit](#)



Craft Ideas

Make your own Fairy dust necklace

[5 Minute Crafts: Peter Pan Inspired Pixie Dust Necklaces! - \[Not Quite\]](#)
[Susie Homemaker](#)



Craft Ideas

MAKE YOUR OWN NEVERLAND SHADOW ART!

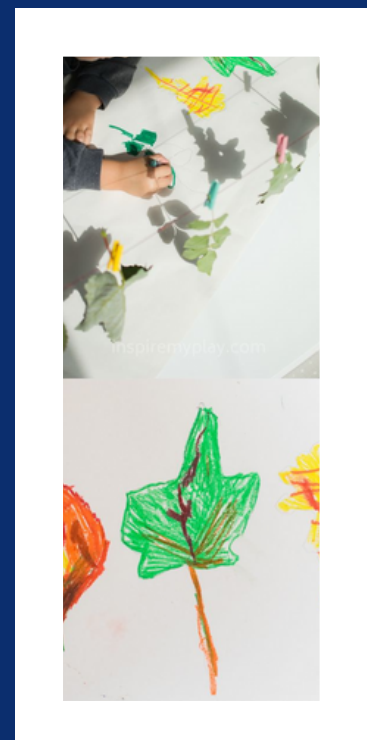
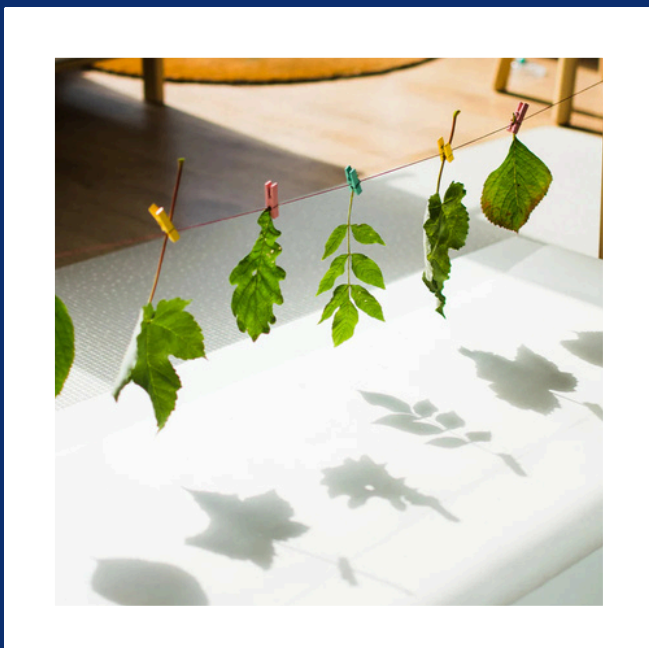


✦ Create your very own shadow! But remember, don't let it fly away!

Follow the step-by-step tutorial link below for a wonderful activity to use with your students:

Make shadow leaf art

[Guide to Shadow Art for Kids: Creative Drawing Idea using Leaves - Inspire My Play.](#)



Thank You For Joining Us!

PETER PAN



Adapted for the stage by
Douglas Irvine

From the book by
J.M. Barrie

November 27, 2024 – January 19, 2025



Arden
THEATRE CO.

Enjoy the show!